

144

STATE OF ILLINOIS
DEPARTMENT OF TRANSPORTATION

FAU RTE	SECTION	COUNTY	TOTAL SHEETS	SHEET NO
2742	2019-109-RS&SW	COOK	*31	1
ILLINOIS CONTRACT NO. 62J77			*31 + 6 = 37 TOTAL SHEETS	
D-91-241-20				



FOR INDEX OF SHEETS, SEE SHEET NO. 2

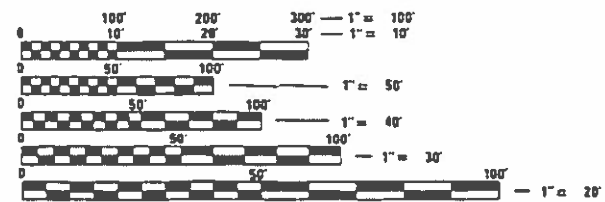
THIS PROJECT IS LOCATED IN THE VILLAGES OF MELROSE PARK AND MAYWOOD.

PROPOSED HIGHWAY PLANS

ROUTE FAU 2742: 5th AVENUE
IL 64 (NORTH AVE) TO LAKE ST
SECTION: 2019-109-RS&SW
PROJECT: STP-EYJB(594)
DESIGNED OVERLAY, ADA IMPROVEMENTS
COOK COUNTY

C-91-021-20

TRAFFIC DATA
2018 ADT: 9050 VPD
SPEED LIMIT: 25 - 30 MPH

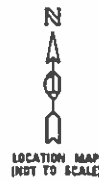
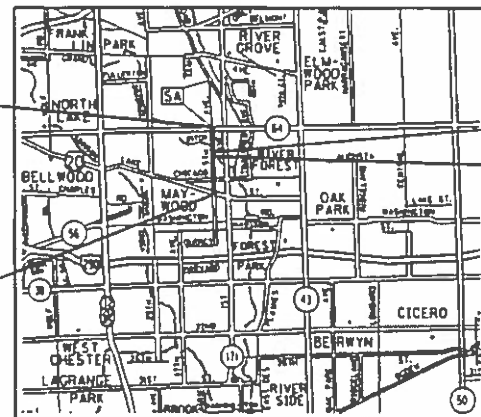


FULL SIZE PLANS HAVE BEEN PREPARED USING STANDARD ENGINEERING SCALES. REDUCED SIZED PLANS WILL NOT CONFORM TO STANDARD SCALES. IN MAKING MEASUREMENTS ON REDUCED PLANS, THE ABOVE SCALES MAY BE USED.

J.U.L.I.E.
JOINT UTILITY LOCATION INFORMATION FOR EXCAVATORS
1-800-892-0123
OR 811

PROJECT ENDS
STA 82+27

PROJECT BEGINS
STA 11+54



OMISSION
STA 49+93 TO
STA 52+61

PROJECT ENGINEER: VESELIN VELICHKOV (847) 705-4432
PROJECT MANAGER: FAWAD AQUEEL (847)-705-4247

PROVISO TOWNSHIP
GROSS LENGTH = 7072.0 FT. = 1.34 MILE
NET LENGTH = 6804.0 FT. = 1.29 MILE

STATE OF ILLINOIS
DEPARTMENT OF TRANSPORTATION

SUBMITTED December 20 20 19

Anthony J. Quigley REGIONAL ENGINEER


Jan 31 20 20

Jan 31 20 20 ENGINEER OF DESIGN AND ENVIRONMENT

Jan 31 20 20 DIRECTOR OF HIGHWAYS PROJECT IMPLEMENTATION

PRINTED BY THE AUTHORITY OF THE STATE OF ILLINOIS

INDEX OF SHEETS

SHEET NO.	DESCRIPTION
1	COVER SHEET
2	INDEX OF SHEETS, STATE STANDARDS, AND GENERAL NOTES
3-5	SUMMARY OF QUANTITIES
6-7	TYPICAL SECTIONS
8-10	ROADWAY AND PAVEMENT MARKING PLAN
11-12	DETECTOR LOOP REPLACEMENT PLAN
13-17	ADA RAMP DETAILS
17A-17E	CURB RAMP DETAILS 
18	BD-01: DRIVEWAY DETAILS - DISTANCE BETWEEN R.O.W. AND FACE OF CURB & EDGE OF SHOULDER $\geq 15'$ (4.5 m)
19	BD-02: DRIVEWAY DETAILS - DISTANCE BETWEEN ROW AND FACE OF CURB $< 15'$ (4.5 m)
20	BD-08: DETAILS FOR FRAMES AND LIDS ADJUSTMENT WITH MILLING
21	BD-22: PAVEMENT PATCHING FOR HMA SURFACED PAVEMENT
22	BD-24: CURB OR CURB AND GUTTER REMOVAL AND REPLACEMENT
23	BD-32: BUTT JOINT AND HMA TAPER DETAILS
24	TC-10: TRAFFIC CONTROL AND PROTECTION FOR SIDE ROADS, INTERSECTIONS, AND DRIVEWAYS
25	TC-11: TYPICAL APPLICATIONS RAISED REFLECTIVE PAVEMENT MARKERS (SNOW PLOW RESISTANT)
26	TC-13: DISTRICT ONE TYPICAL PAVEMENT MARKINGS
27	TC-14: TRAFFIC CONTROL AND PROTECTION AT TURN BAYS (TO REMAIN OPEN TO TRAFFIC)
28	TC-16: SHORT TERM PAVEMENT MARKING LETTERS AND SYMBOLS
29	TC-22: ARTERIAL ROAD INFORMATION SIGN
30	TC-26: DRIVEWAY ENTRANCE SIGNING
31	TS-07: DISTRICT 1 - DETECTOR LOOP INSTALLATION DETAILS FOR ROADWAY RESURFACING


HIGHWAY STANDARDS

STANDARD NO.	DESCRIPTION
000001-07	STANDARD SYMBOLS, ABBREVIATIONS AND PATTERNS
424001-11	PERPENDICULAR CURB RAMPS FOR SIDEWALKS
424006-04	DIAGONAL CURB RAMPS FOR SIDEWALKS
424021-05	DEPRESSED CORNER FOR SIDEWALKS
424031-02	MEDIAN PEDESTRIAN CROSSINGS
442201-04	CLASS C AND D PATCHES
604001-05	FRAME AND LIDS TYPE 1
604051-04	FRAME AND GRATE TYPE 11
606001-07	CONCRETE CURB TYPE B AND COMBINATION CONCRETE CURB AND GUTTER
701006-05	OFF-ROAD OPERATIONS, 2L, 2W, 15' TO 24" FROM PAVEMENT EDGE
701011-04	OFF-ROAD MOVING OPERATIONS, 2L, 2W, DAY ONLY
701101-05	OFF-ROAD OPERATIONS, MULTILANE, 15' (4.5 M) TO 24' (600 MM) FROM PAVEMENT EDGE
701301-04	LANE CLOSURE, 2L, 2W, SHORT TIME OPERATIONS
701311-03	LANE CLOSURE, 2L, 2W, MOVING OPERATIONS -DAY ONLY
701427-05	LANE CLOSURE, MULTILANE, INTERMITTENT OR MOVING OPERATIONS, FOR SPEEDS ≤ 40 MPH
701501-06	URBAN LANE CLOSURE, 2L, 2W, UNDIVIDED
701606-10	URBAN SINGLE LANE CLOSURE, MULTILANE, 2W WITH MOUNTABLE MEDIAN
701611-01	URBAN HALF ROAD CLOSURE, MULTILANE, 2W WITH MOUNTABLE MEDIAN
701701-10	URBAN LANE CLOSURE, MULTILANE INTERSECTION
701801-06	SIDEWALK CORNER OR CROSSWALK CLOSURE
701901-08	TRAFFIC CONTROL DEVICES
814001-03	HANDHOLES

- FRAMES AND GRATES ADJUSTMENT OF PRIVATE UTILITIES WITHIN THE LIMITS OF THE IMPROVEMENTS SHALL BE DONE BY THEIR RESPECTIVE OWNERS AND ARE NOT PART OF THIS CONTRACT.
- FOR FRAMES AND LIDS ADJUSTMENT WITHOUT MILLING, REUSE EXISTING FRAME AND LID UNLESS OTHERWISE SPECIFIED IN THE PLANS.
- THE CONTRACTOR SHALL CONTACT DISTRICT ONE ARTERIAL TRAFFIC CONTROL SUPERVISOR AT KALPANA.KANNAN-HOSADURGA@ILLINOIS.GOV A MINIMUM OF 72 HOURS IN ADVANCE OF BEGINNING WORK.
- THE ENGINEER SHALL CONTACT KYLIE VOGRIN, AREA TRAFFIC FIELD ENGINEER, VIA E-MAIL AT KYLIE.VOGRIN@ILLINOIS.GOV A MINIMUM OF TWO (2) WEEKS PRIOR TO THE PLACEMENT OF PERMANENT PAVEMENT MARKINGS.
- THE CONTRACTOR SHALL BE REQUIRED TO PROVIDE ACCESS TO ABUTTING PROPERTY AT ALL TIMES DURING THE CONSTRUCTION OF THIS PROJECT.
- DO NOT SCALE PLANS FOR CONSTRUCTION DIMENSIONS.
- DOUBLE LANE MARKERS ARE TO BE USED AS SHOWN ON THE DISTRICT ONE DETAIL "TYPICAL APPLICATIONS - RAISED REFLECTIVE PAVEMENT MARKERS (SNOW-PLOW RESISTANT)".
- WHEN THE MILLED PAVEMENT IS OPEN TO TRAFFIC THE MAXIMUM GRADE DIFFERENTIAL BETWEEN PASSES OF THE MILLING MACHINE SHALL NOT EXCEED 1/2 INCHES (40 mm) WHERE THE SPEED LIMIT IS 45 MPH (80 km/h) OR LESS AND 1 INCH (25 mm) WHERE THE SPEED LIMIT IS GREATER THAN 45 MPH (80 km/h). WITH WRITTEN APPROVAL OF THE ENGINEER, A MAXIMUM GRADE DIFFERENTIAL OF 3 INCHES (75 mm) MAY BE ALLOWED IF THE EDGE OF THE MILLING IS SLOPED A MINIMUM 1:3.
- BUTT JOINTS WILL BE INSTALLED AT THE ENDS OF ALL RESURFACING (WHERE RESURFACING MEETS EXISTING PAVEMENT) ACCORDING TO THE "BUTT JOINT AND HOT-MIX ASPHALT TAPER DETAILS" SHEET INCLUDED IN THE PLANS, UNLESS OTHERWISE SPECIFIED.
- LANDSCAPED AREAS AFFECTED BY SIDEWALK CONSTRUCTION SHALL BE RESTORED WITH 18" WIDE STRIP OF "SODDING, SALT TOLERANT" AND "TOPSOIL FURNISH AND PLACE, 4-INCH" INSTALLED FROM THE BACK OF THE SIDEWALK, OR AS DETERMINED BY THE RESIDENT ENGINEER.
- PAVEMENT MARKING TAPE, TYPE III SHALL BE USED FOR SHORT TERM PAVEMENT MARKINGS ON ALL FINAL SURFACES.
- UNLESS OTHER CONDITIONS WARRANT EXTENDED LANE CLOSURE AS DETERMINED AND APPROVED IN WRITING BY THE RESIDENT ENGINEER OR AS PROVIDED FOR IN THE CONTRACT SPECIFICATIONS, OVERNIGHT CLOSURES SHALL NOT BE ALLOWED FOR REHABILITATION PROJECTS INVOLVING DAYTIME MILLING AND RESURFACING OPERATIONS AND CLASS D PATCHING.
- LOCATION OF COMBINATION CONCRETE CURB AND GUTTER REMOVAL AND REPLACEMENT (OR COMBINATION CURB AND GUTTER (THE TYPE SPECIFIED ON THE PLANS)), WILL BE DETERMINED IN THE FIELD BY THE RESIDENT ENGINEER/TECHNICIAN.
- THE CONTRACTOR SHALL USE CARE IN GRADING OR EXCAVATING NEAR ANY AND ALL EXISTING ITEMS THAT WILL NOT BE REMOVED INCLUDING PREVIOUSLY SEEDED AREAS. ANY DAMAGE DONE TO EXISTING ITEMS BY THE CONTRACTOR SHALL BE REPAIRED AT THE CONTRACTOR'S OWN EXPENSE TO THE SATISFACTION OF THE ENGINEER.

GENERAL NOTES

- BEFORE STARTING ANY EXCAVATION, THE CONTRACTOR SHALL CALL "J.U.L.I.E." AT (800) 892-0123 OR 811 FOR FIELD LOCATIONS OF BURIED ELECTRIC, TELEPHONE AND GAS UTILITIES. (48 HOUR NOTIFICATION IS REQUIRED)
- THE CONTRACTOR SHALL COORDINATE CONSTRUCTION ACTIVITIES WITH UTILITY COMPANIES, AND THE VILLAGE OF MELROSE PARK AND MAYWOOD.
- THE CONTRACTOR WILL NOT BE ALLOWED TO SET UP A YARD OR FIELD OFFICE ON STATE PROPERTY WITHOUT WRITTEN PERMISSION FROM THE DEPARTMENT.
- ANY PAVEMENT MARKINGS AND RAISED REFLECTIVE PAVEMENT MARKERS OBLITERATED BY MILLING AND RESURFACING OPERATIONS ON SIDE STREETS AND ENTRANCES SHALL BE REPLACED AND PAID FOR IN KIND.
- ALL DAMAGE TO EXISTING PAVEMENT MARKINGS OR RAISED REFLECTIVE PAVEMENT MARKERS OUTSIDE THE REMOVAL LINE SHOWN ON THE PLANS SHALL BE REPLACED AT NO ADDITIONAL COST TO THE DEPARTMENT.
- BEFORE BEGINNING ANY WORK, THE CONTRACTOR SHALL RETAIN AND RECORD FOR FUTURE REFERENCE OF ALL EXISTING PAVEMENT MARKING LINES (AND RAISED REFLECTIVE PAVEMENT MARKERS) IN ORDER THAT THESE LOCATIONS CAN BE RE-ESTABLISHED FOR STRIPING. EXACT LOCATIONS OF ALL PAVEMENT MARKINGS SHALL BE AS DIRECTED BY THE RESIDENT ENGINEER.
- ALL PAVEMENT PATCHING LOCATIONS WILL BE DETERMINED IN THE FIELD BY THE RESIDENT ENGINEER/TECHNICIAN.
- DRAINAGE ADJUSTMENT OR RECONSTRUCTION LOCATIONS WILL BE DETERMINED IN THE FIELD BY THE RESIDENT ENGINEER/TECHNICIAN.
- IT SHALL BE THE CONTRACTOR'S RESPONSIBILITY TO VERIFY ALL DIMENSIONS AND CONDITIONS EXISTING IN THE FIELD PRIOR TO CONSTRUCTION AND ORDERING OF MATERIALS.

 REV. 2-27-2020

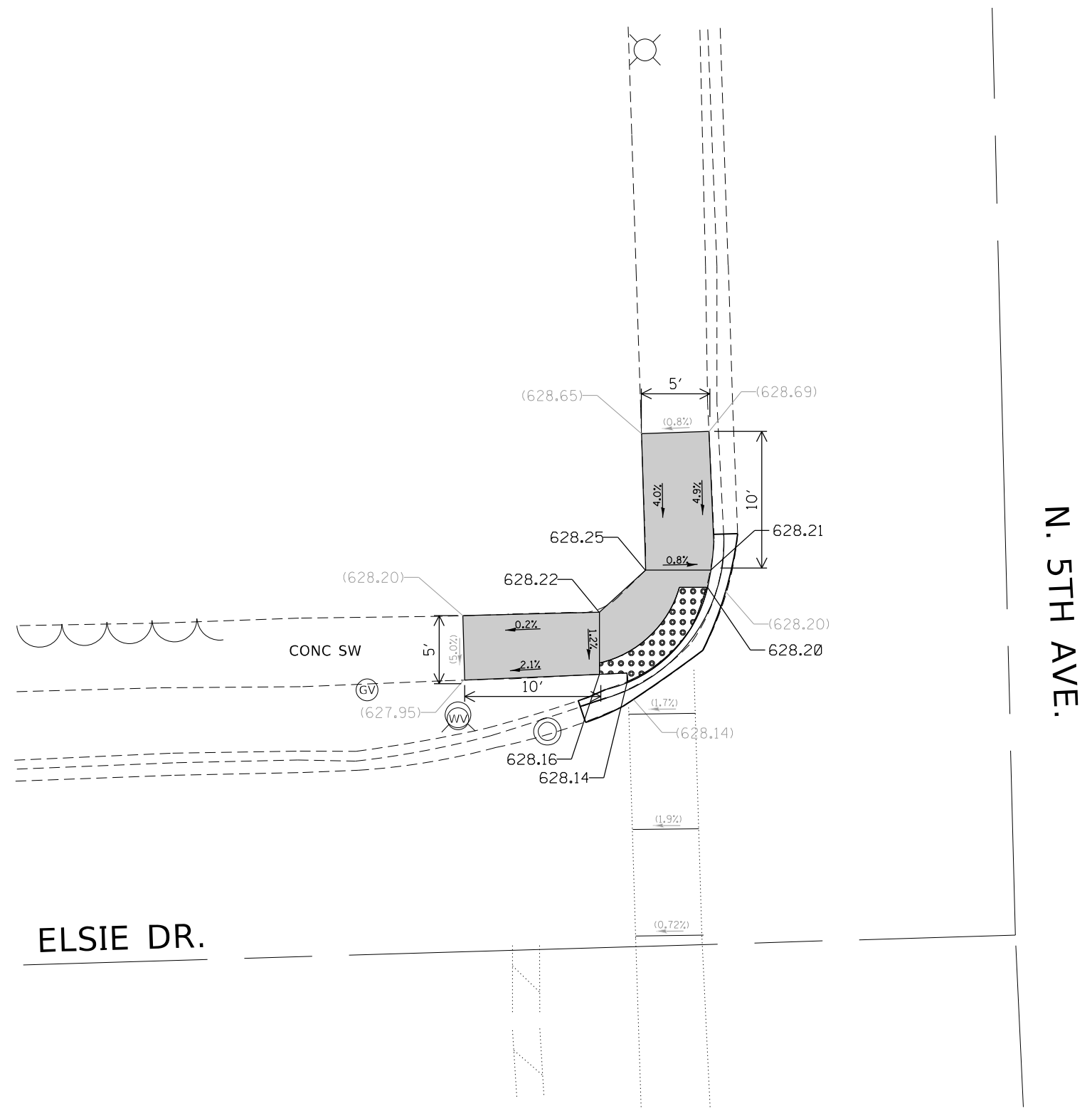
FILE NAME =	USER NAME = Josephm	DESIGNED -	REVISED - 2/18/2020	STATE OF ILLINOIS DEPARTMENT OF TRANSPORTATION	5th AVE - NORTH AVE TO LAKE ST INDEX OF SHEETS, STATE STANDARDS & GENERAL NOTES			F.A.U. RTE.	SECTION	COUNTY	TOTAL SHEETS	SHEET NO.
Default	20-sh-t-gennote.dgn	DRAWN -	REVISED -		2742	2019-109-R5&SW	COOK	31	2			
	PLOT SCALE = 100.0000' / 1".	CHECKED -	REVISED -		CONTRACT NO. 62J77							
	PLOT DATE = 2/18/2020	DATE -	REVISED -		ILLINOIS FED. AID PROJECT							

SUMMARY OF QUANTITIES			TOTAL QUANTITIES	CONSTRUCTION TYPE CODE				
CODE NO	ITEM	UNIT		0005	0005			
				80% FED	100% STATE			
			20% STATE					
			ROADWAY					
* 78000400	THERMOPLASTIC PAVEMENT MARKING - LINE 6"	FOOT	2462	2462				
* 78000500	THERMOPLASTIC PAVEMENT MARKING - LINE 8"	FOOT	214	214				
* 78000600	THERMOPLASTIC PAVEMENT MARKING - LINE 12"	FOOT	468	468				
* 78000650	THERMOPLASTIC PAVEMENT MARKING - LINE 24"	FOOT	459	459				
* 78009004	MODIFIED URETHANE PAVEMENT MARKING - LINE 4"	FOOT	138	138				
* 78100100	RAISED REFLECTIVE PAVEMENT MARKER	EACH	467	467				
78300200	RAISED REFLECTIVE PAVEMENT MARKER REMOVAL	EACH	467	467				
* 85000200	MAINTENANCE OF EXISTING TRAFFIC SIGNAL INSTALLATION	EACH	2	2				
* 88600600	DETECTOR LOOP REPLACEMENT	FOOT	856	856				
* 89500400	RELOCATE EXISTING PEDESTRIAN PUSH-BUTTON	EACH	4	4				
* 89502376	REBUILD EXISTING HANDHOLE	EACH	7	7				
X0320050	CONSTRUCTION LAYOUT (SPECIAL)	L SUM	1	1				
X0327611	REMOVE AND REINSTALL BRICK PAVER	SQ FT	75	75				
* X2700003	GROOVING FOR RECESSED PAVEMENT MARKING 8"	FOOT	276	276				

SUMMARY OF QUANTITIES			TOTAL QUANTITIES	CONSTRUCTION TYPE CODE				
CODE NO	ITEM	UNIT		0005	0005			
				80% FED	100% STATE			
			20% STATE					
			ROADWAY					
* X2700004	PREFORMED PLASTIC PAVEMENT MARKING, TYPE B - LINE 7"	FOOT	276	276				
X5537800	STORM SEWERS TO BE CLEANED 12"	FOOT	2520	2520				
X6030310	FRAMES AND LIDS TO BE ADJUSTED (SPECIAL)	EACH	73	73				
X7030005	TEMPORARY PAVEMENT MARKING REMOVAL	SO FT	8811	8811				
Z0004562	COMBINATION CONCRETE CURB AND GUTTER REMOVAL AND REPLACEMENT	FOOT	2466	2466				
Z0018500	DRAINAGE STRUCTURES TO BE CLEANED	EACH	60	60				
Z0030850	TEMPORARY INFORMATION SIGNING	SO FT	52	52				
Z0033700	LONGITUDINAL JOINT SEALANT	FOOT	2466	2466				

* = SPECIALTY ITEMS
 △ = NON-PARTICIPATING WORK (100% STATE)

△ REV. 2-27-2020



REFERENCE BENCHMARK ELEV 629.113
 BENCHMARK : X-CUT ON NORTHEAST BOLT OF FIRE HYDRANT
 LOCATION : NORTH WEST CORNER OF 5TH AVENUE AND ELSIE DRIVE

LEGEND

- xx.xx' EXISTING LENGTH
- PROPOSED SIDE CURB
- EXISTING ELEVATION/SLOPE
- PROPOSED SIDEWALK
- DETECTABLE WARNINGS
- SIDEWALK REMOVAL
REPLACE W/TOPSOIL & SOD

SHEET ADDED 2-27-2020

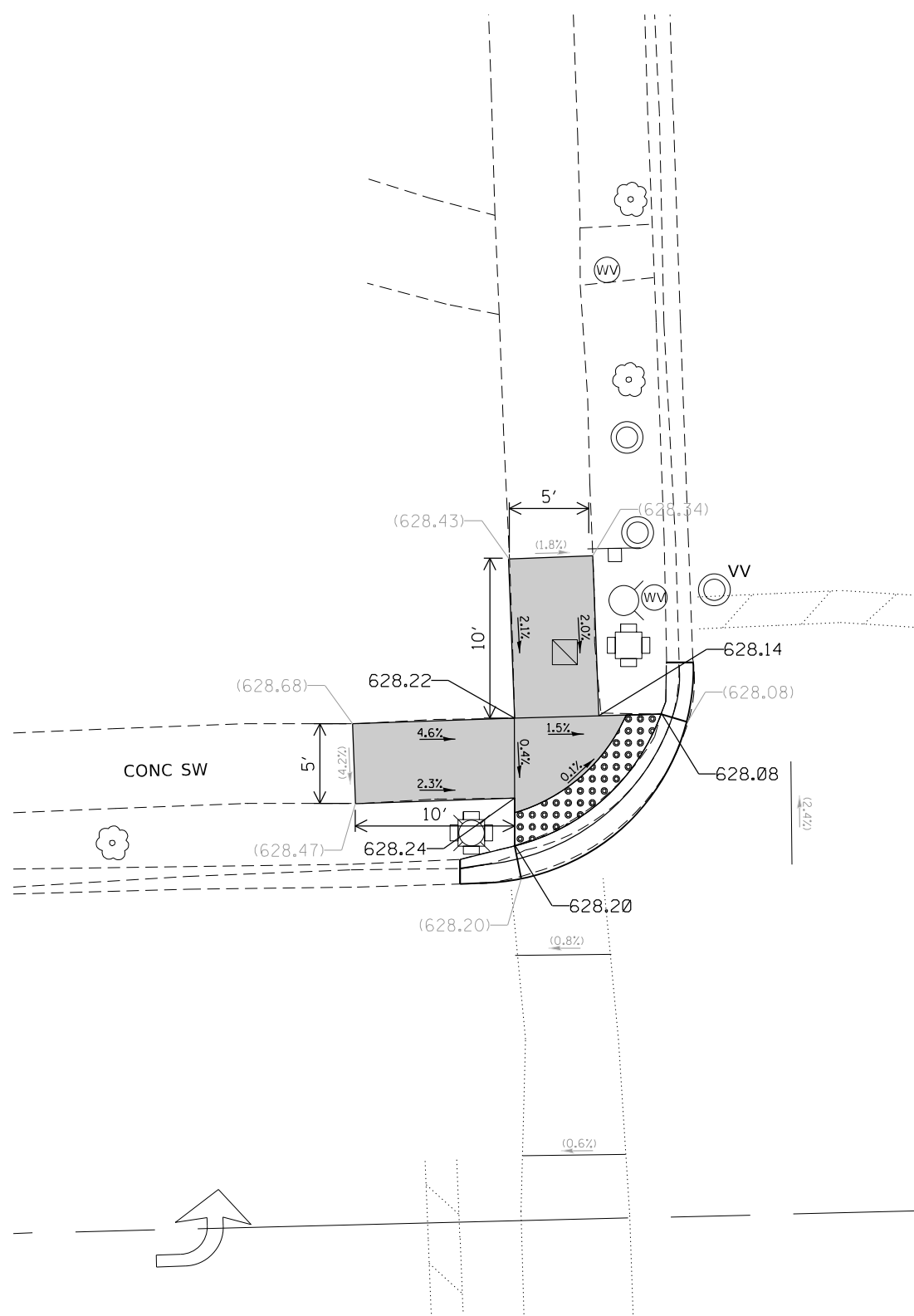
MODEL: Default
 FILE NAME: p:\pub\amaron.dwg
 PROJECT: I:\Projects\124120\CADD\124120-CADD\124120-5th-schedule.dwg

USER NAME = Josephm	DESIGNED -	REVISED -
PLOT SCALE = 10,0000 * / in.	DRAWN -	REVISED -
PLOT DATE = 2/18/2020	CHECKED -	REVISED -
	DATE -	REVISED -

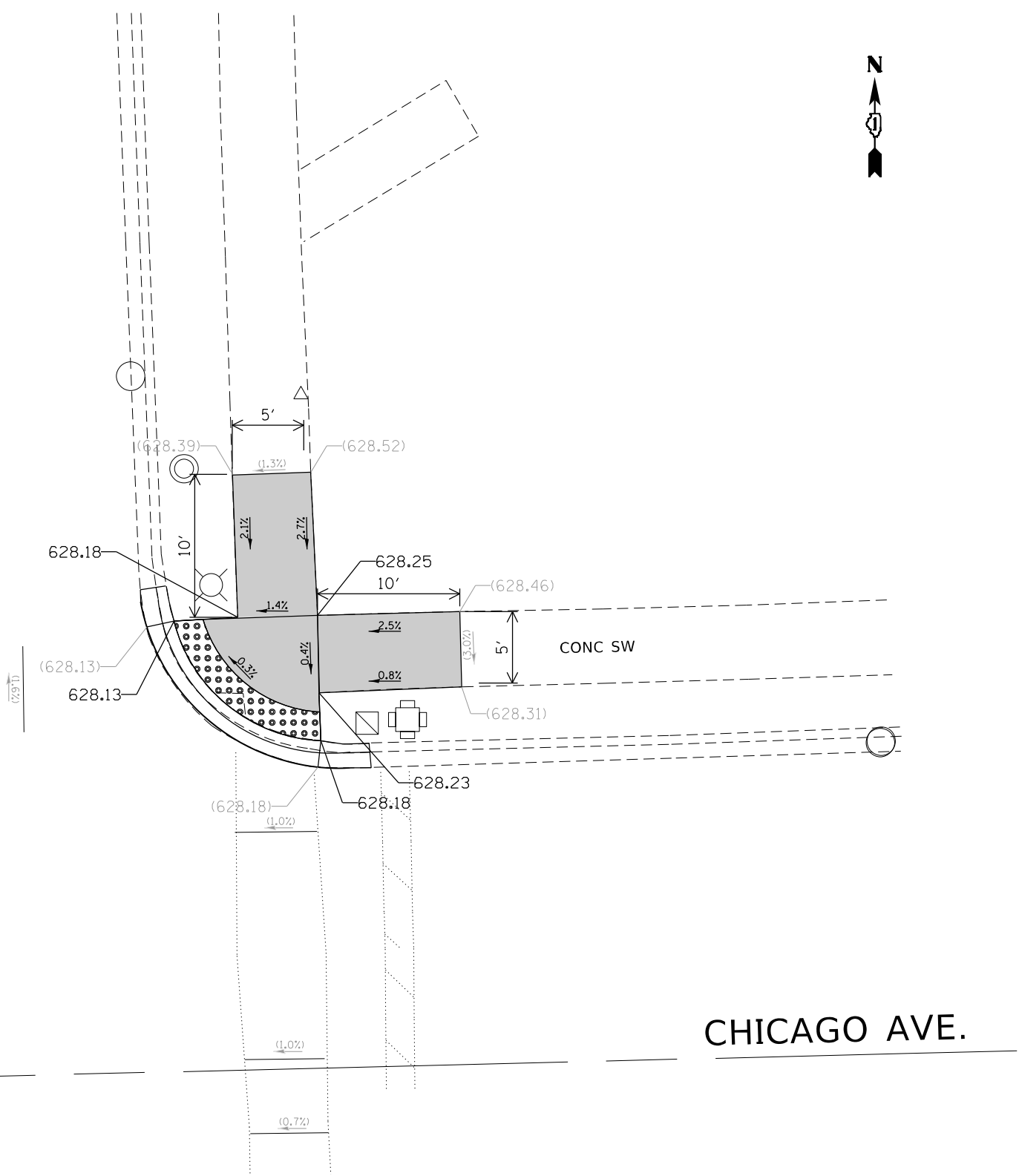
STATE OF ILLINOIS
DEPARTMENT OF TRANSPORTATION

SCALE:		SHEET		OF		SHEETS		STA.		TO STA.	

F.A.U. RTE.	SECTION	COUNTY	TOTAL SHEETS	SHEET NO.
2742	2019-109-R5&SW	COOK	31	17A
CONTRACT NO. 62J77				
ILLINOIS FED. AID PROJECT				



N. 5TH AVE.



CHICAGO AVE.

REFERENCE BENCHMARK ELEV 628.723

BENCHMARK : SQUARE-CUT

LOCATION : SOUTH EAST CORNER OF 5TH AVENUE AND CHICAGO AVENUE

LEGEND

xx.xx'

EXISTING LENGTH

==

PROPOSED SIDE CURB

()

EXISTING ELEVATION/SLOPE



PROPOSED SIDEWALK



DETECTABLE WARNINGS



SIDEWALK REMOVAL
REPLACE W/TOPSOIL & SOD

STATE OF ILLINOIS
DEPARTMENT OF TRANSPORTATION

CURB RAMP DETAILS

SCALE: SHEET OF SHEETS STA. TO STA.

1 SHEET ADDED 2-27-2020

MODEL: Default
FILE NAME: p:\data\mcrmonr.dwg
PROJECT: 2019-109-R5&SW
OFFICE: DISTRICT 1
PROJECT: 2019-109-R5&SW
DESIGN: 2019-109-R5&SW
DATE: 2/18/2020

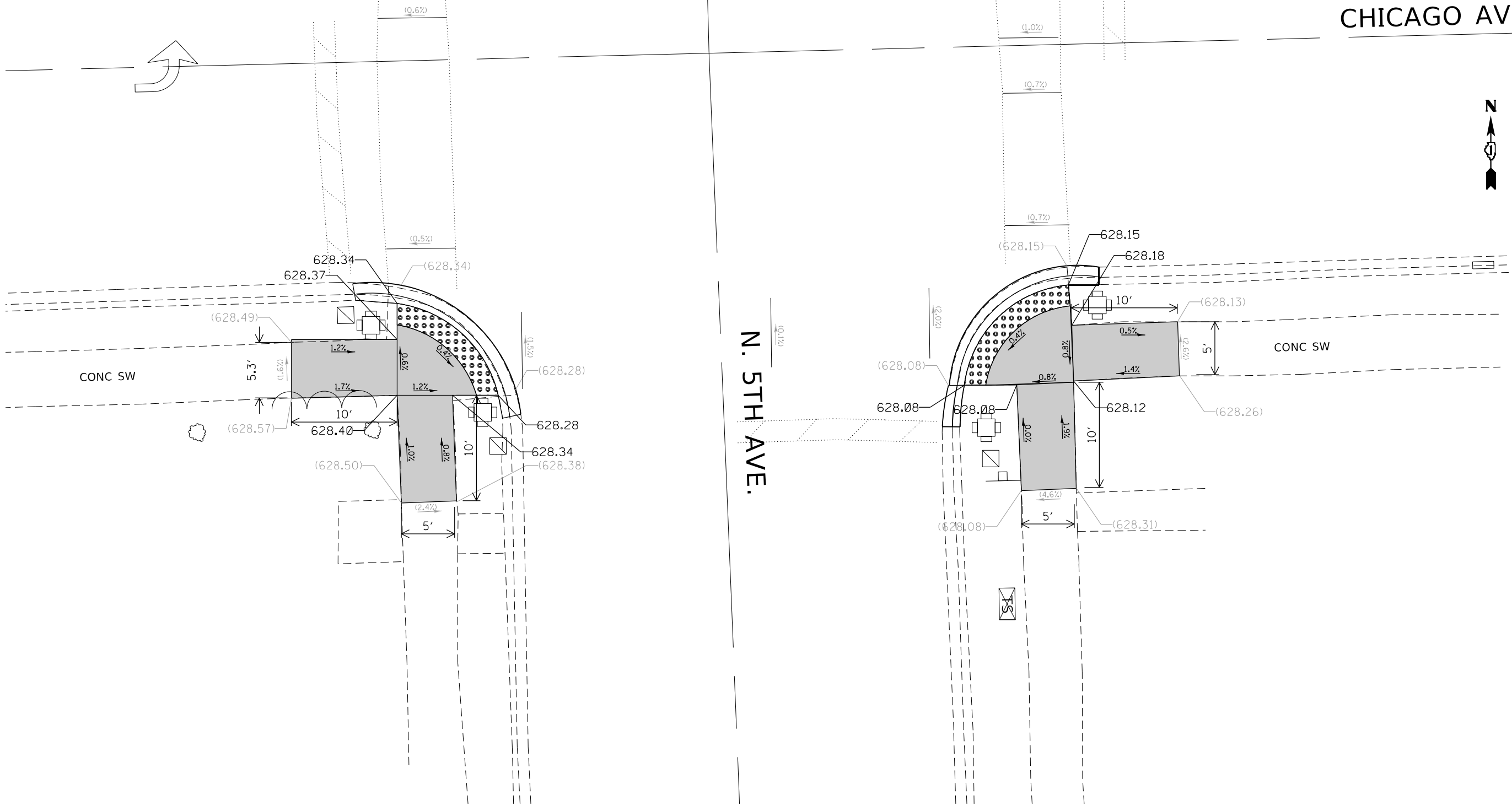
USER NAME = Josephm	DESIGNED -	REVISED -
PLOT SCALE = 10,0000 * / in.	DRAWN -	REVISED -
PLOT DATE = 2/18/2020	CHECKED -	REVISED -
	DATE -	REVISED -

F.A.U. RTE. 2742	SECTION 2019-109-R5&SW	COUNTY COOK	TOTAL SHEETS 31	SHEET NO. 17B
CONTRACT NO. 62J77				
ILLINOIS FED. AID PROJECT				

CHICAGO AVE.



N. 5TH AVE.



REFERENCE BENCHMARK ELEV 628.723

BENCHMARK : SQUARE-CUT

LOCATION : SOUTH EAST CORNER OF 5TH AVENUE AND CHICAGO AVENUE

LEGEND

xx.xx'

EXISTING LENGTH

=====

PROPOSED SIDE CURB

()

EXISTING ELEVATION/SLOPE



PROPOSED SIDEWALK



DETECTABLE WARNINGS



SIDEWALK REMOVAL
REPLACE W/TOPSOIL & SOD

MODEL: Default
FILE NAME: p:\data\armon\dot\illinois\dot\pww\dot\Documents\DOT_Offices\Drawings\Projects\124120\CADDData\Design\124120-nth-schedule.dgn

USER NAME = Josephm	DESIGNED -	REVISED -
	DRAWN -	REVISED -
PLOT SCALE = 10,0000' / in.	CHECKED -	REVISED -
PLOT DATE = 2/18/2020	DATE -	REVISED -

**STATE OF ILLINOIS
DEPARTMENT OF TRANSPORTATION**

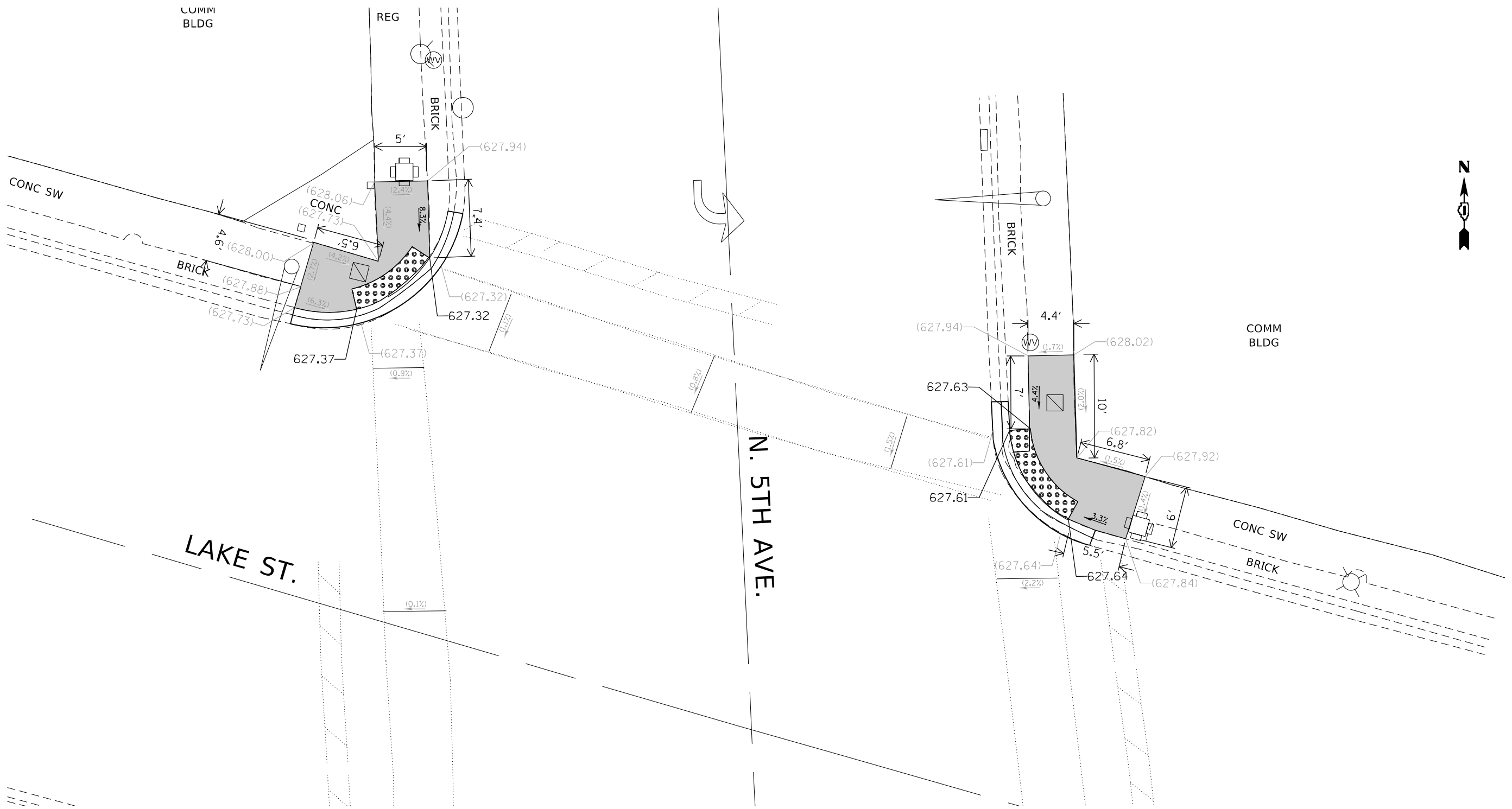
CURB RAMP DETAILS

SCALE: SHEET OF SHEETS STA. TO STA.

1 SHEET ADDED 2-27-2020

F.A.U. RTE.	SECTION	COUNTY	TOTAL SHEETS	SHEET NO.
2742	2019-109-RS&SW	COOK	31	17C
CONTRACT NO. 62J77				
ILLINOIS FED. AID PROJECT				

MODEL: Default
 FILE NAME: \\p011amr001\pub\illinois\dot\Documents\DOT_Offices\Bartec\1\Projects\124120\CADD\Bldg\Design\124120-5th-schedule.dgn



REFERENCE BENCHMARK ELEV 628.653
 BENCHMARK : SQUARE ON SOUTH WEST CORNER OF TCB
 LOCATION : SOUTH WEST CORNER OF 5TH AVENUE AND LAKE STREET

LEGEND

	EXISTING LENGTH		PROPOSED SIDEWALK
	PROPOSED SIDE CURB		DETECTABLE WARNINGS
	EXISTING ELEVATION/SLOPE		SIDEWALK REMOVAL REPLACE W/TOPSOIL & SOD

1 SHEET ADDED 2-27-2020

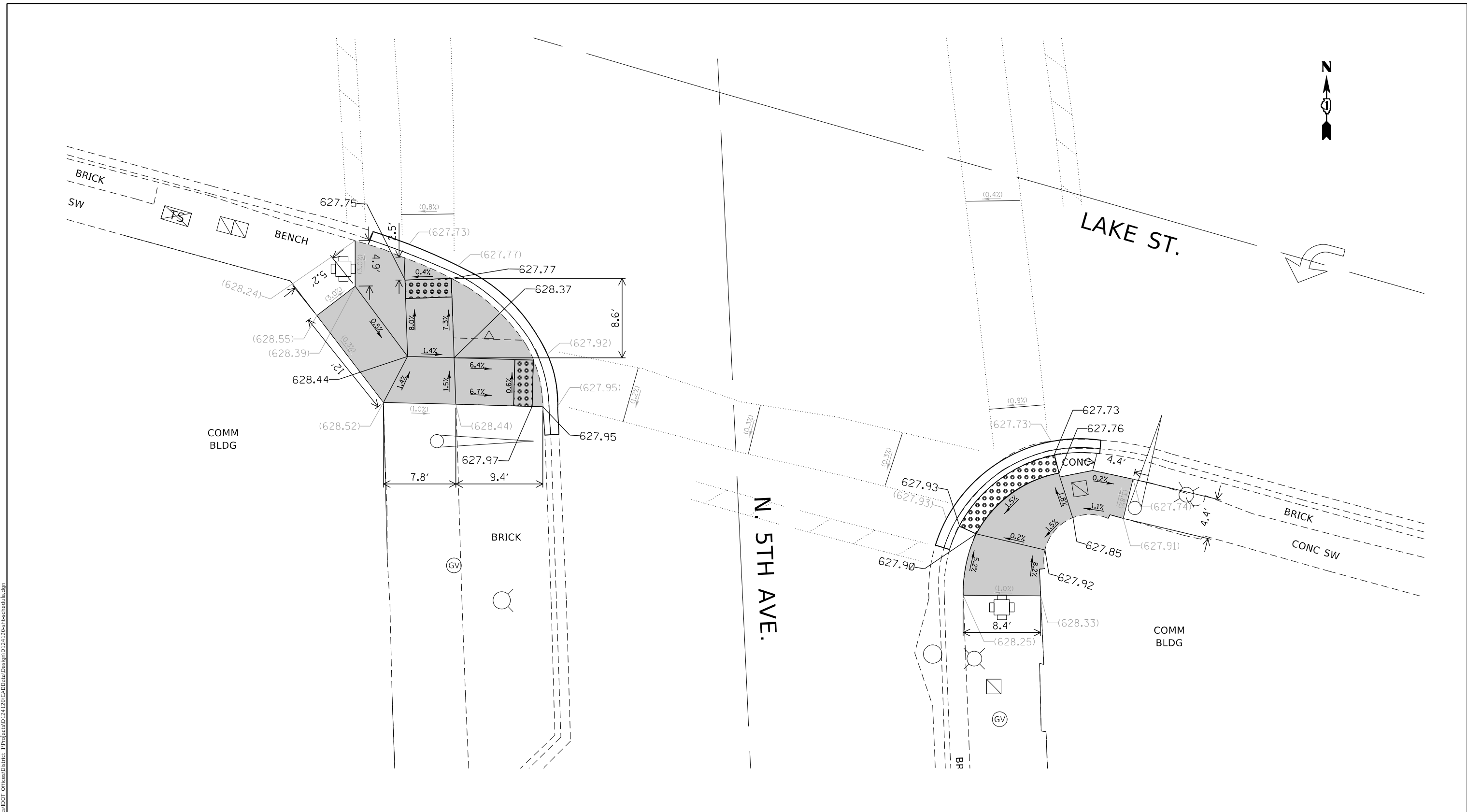
USER NAME = Josephm	DESIGNED -	REVISED -
	DRAWN -	REVISED -
PLOT SCALE = 10,0000 * / in.	CHECKED -	REVISED -
PLOT DATE = 2/18/2020	DATE -	REVISED -

**STATE OF ILLINOIS
DEPARTMENT OF TRANSPORTATION**

CURB RAMP DETAILS

SCALE:	SHEET	OF	SHEETS	STA.	TO	STA.
--------	-------	----	--------	------	----	------

F.A.U. RTE.	SECTION	COUNTY	TOTAL SHEETS	SHEET NO.
2742	2019-109-R5&SW	COOK	31	17D
CONTRACT NO. 62J77				
ILLINOIS FED. AID PROJECT				



REFERENCE BENCHMARK ELEV 628.653
 BENCHMARK : SQUARE ON SOUTH WEST CORNER OF TCB
 LOCATION : SOUTH WEST CORNER OF 5TH AVENUE AND LAKE STREET

LEGEND	
xx.xx'	EXISTING LENGTH
====	PROPOSED SIDE CURB
()	EXISTING ELEVATION/SLOPE
■	PROPOSED SIDEWALK
■ (with dots)	DETECTABLE WARNINGS
■ (with cross-hatch)	SIDEWALK REMOVAL REPLACE W/TOPSOIL & SOD

**STATE OF ILLINOIS
 DEPARTMENT OF TRANSPORTATION**

CURB RAMP DETAILS

1 SHEET ADDED 2-27-2020

USER NAME = Josephm	DESIGNED -	REVISED -
	DRAWN -	REVISED -
PLOT SCALE = 10,0000' / in.	CHECKED -	REVISED -
PLOT DATE = 2/18/2020	DATE -	REVISED -

SCALE:	SHEET	OF	SHEETS	STA.	TO	STA.
--------	-------	----	--------	------	----	------

F.A.U. RTE.	SECTION	COUNTY	TOTAL SHEETS	SHEET NO.
2742	2019-109-R5&SW	COOK	31	17E
CONTRACT NO. 62177				
ILLINOIS FED. AID PROJECT				

MODEL: Default
 FILE NAME: p:\m\baronon.dwg
 PROJECT: 124120\CADDData\Design\124120-5th-schedule.dgn