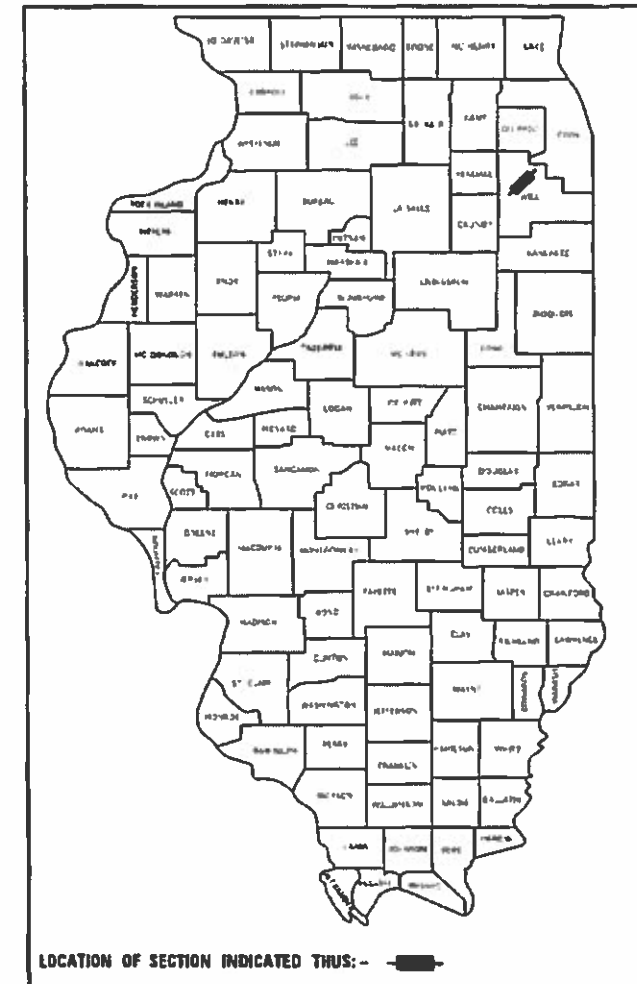


145

STATE OF ILLINOIS
DEPARTMENT OF TRANSPORTATION

STATE	SECTION	COUNTY	TOTAL SHEETS	SHEET NO.
ILL	2019-141-RS	WILL	28	1
		CONTRACT NO.	62K15	

D-91-292-20



FOR INDEX OF SHEETS, SEE SHEET NO. 2

PROJECT IS LOCATED IN THE CITY OF
LOCKPORT AND DUPAGE TOWNSHIP

PROPOSED HIGHWAY PLANS

ROUTE FAU 361 (NEW AVENUE)
LONG RUN CREEK TO COOK COUNTY LINE
SECTION: 2019-141-RS
PROJECT: STP-VWJ1(406)
STANDARD OVERLAY

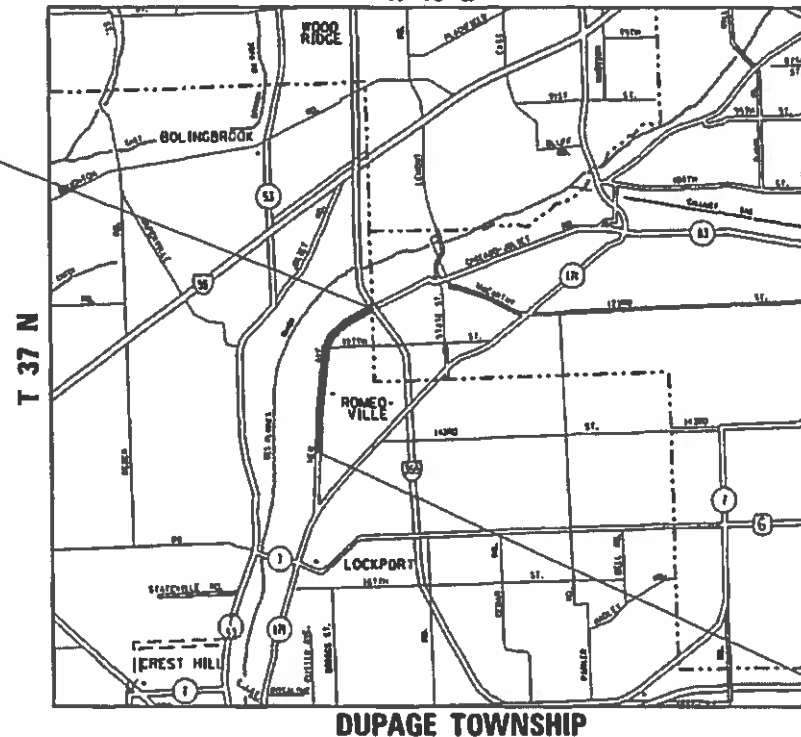
TRAFFIC DATA:

2016 ADT = 6500 VPD
SPEED LIMIT = 45 MPH

WILL COUNTY

C-91-075-20

R 10 E

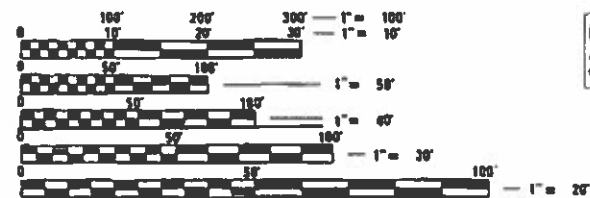


PROJECT ENDS
STA 362+00

OMMISSION FROM STA
245+82.2 TO 246+48.6

LOCATION MAP
(NOT TO SCALE)

PROJECT BEGINS
STA 189+91.2



FULL SIZE PLANS HAVE BEEN PREPARED USING STANDARD
ENGINEERING SCALES. REDUCED SIZED PLANS WILL NOT
CONFORM TO STANDARD SCALES. IN MAKING MEASUREMENTS
ON REDUCED PLANS, THE ABOVE SCALES MAY BE USED.

J.U.L.I.E.
JOINT UTILITY LOCATION INFORMATION FOR EXCAVATION
1-800-892-0123
OR 811

PROJECT ENGINEER VESELIN VELICHKOV (847) 705-4432
PROJECT MANAGER FAWAD AQUEEL (847) 705-4247

GROSS LENGTH = 16896.0 FT. = 3.20 MILE
NET LENGTH = 16896.0 FT. = 3.20 MILE

STATE OF ILLINOIS
DEPARTMENT OF TRANSPORTATION

SUBMITTED DECEMBER 20 20 19

Anthony J. Rung REGIONAL ENGINEER

Am 31 20 20

[Signature] ENGINEER OF DESIGN AND ENVIRONMENT

Am 3 20 20

[Signature] DIRECTOR OF HIGHWAYS PROJECT IMPLEMENTATION

PRINTED BY THE AUTHORITY
OF THE STATE OF ILLINOIS

CONTRACT NO. 62K15

GENERAL NOTES (CONTINUED)

16. ALL DAMAGE TO EXISTING PAVEMENT MARKINGS OR RAISED REFLECTIVE PAVEMENT MARKERS OUTSIDE THE REMOVAL LINE SHOWN ON THE PLANS SHALL BE REPLACED AT NO ADDITIONAL COST TO THE DEPARTMENT.
17. ANY PAVEMENT MARKINGS AND RAISED REFLECTIVE PAVEMENT MARKERS OBLITERATED BY MILLING AND RESURFACING OPERATIONS ON SIDE STREETS AND ENTRANCES SHALL BE REPLACED AND PAID FOR IN KIND.
18. THE GENERAL CONTRACTOR IS REQUIRED TO HIRE AN ENVIRONMENT FIRM TO CONTINUOUSLY MONITOR FOR WORKER SAFETY AND SOIL CONTAMINATION AT SEVERAL LOCATIONS. SEE SPECIAL PROVISION AND SUPPLEMENTAL SPECIFICATIONS FOR DETAILS.
19. IT SHALL BE THE CONTRACTOR'S RESPONSIBILITY TO VERIFY ALL DIMENSIONS AND CONDITIONS EXISTING IN THE FIELD PRIOR TO CONSTRUCTION AND ORDERING OF MATERIALS.
20. THE CONTRACTOR SHALL BE REQUIRED TO PROVIDE ACCESS TO ABUTTING PROPERTY AT ALL TIMES DURING THE CONSTRUCTION OF THIS PROJECT.
21. ALL CAST OPEN LIDS FOR FRAMES, TYPE 1, WITHIN CURB RAMPS FOR SIDEWALK, SHALL BE "ADA COMPLIANT" CAST OPEN LIDS PER HIGHWAY STANDARD 604001.
22. THE CONTRACTOR SHALL BE RESPONSIBLE FOR THE REPLACEMENT OF ANY DETECTOR LOOPS DAMAGED DURING CONSTRUCTION.
23. PAVEMENT PATCHING LOCATIONS WILL BE DETERMINED IN THE FIELD BY THE RESIDENT ENGINEER / TECHNICIAN.
24. WHEN EXISTING SIDEWALK IS TO BE REMOVED WITHOUT PROPOSED SIDEWALK REPLACEMENT, IT SHALL BE REPLACED WITH TOPSOIL AND SOD.
25. PAVEMENT MARKING TAPE, TYPE III SHALL BE USED FOR SHORT TERM PAVEMENT MARKINGS ON ALL FINAL SURFACES.
26. THE CONTRACTOR SHALL MAINTAIN PEDESTRIAN ACCESS AT ALL TIMES DURING CONSTRUCTION.
27. GAPS BETWEEN SUCCESSIVE LANE CLOSURES SHALL NOT BE LESS THAN 2 MILES (3 KM) IN LENGHT ACCORDING TO ARTICLE 701.05 MAXIMIM LENGTH OF LANE CLOSURE
28. DO NOT SCALE PLANS FOR CONSTRUCTION DIMENSIONS.

MODEL: Default
 FILE: \\nashville.pva.uplanroom.com\data\illinois.gov\PWIDOT\Documents\DOT_Offices\District_1\Projects\ID129220\CADD\Drawings\ID129220_sht-general.dgn

USER NAME = lababidim	DESIGNED -	REVISED -	STATE OF ILLINOIS DEPARTMENT OF TRANSPORTATION	NEW AVENUE (LONG RUN CREEK TO COOK COUNTY LINE) INDEX OF SHEETS, STATE STANDARDS & GENERAL NOTES	F.A.U. RTE.	SECTION	COUNTY	TOTAL SHEETS	SHEET NO.
DRAWN -	REVISED -	361			2019-141-R5	WILL	28	3	
PLOT SCALE = 100.0000 ' / in.	CHECKED -	REVISED -			CONTRACT NO. 62K15				
PLOT DATE = 12/26/2019	DATE -	REVISED -			ILLINOIS FED. AID PROJECT				
				SCALE:	SHEET	OF	SHEETS	STA.	TO STA.

SUMMARY OF QUANTITIES			TOTAL QUANTITIES URBAN	CONSTRUCTION TYPE CODE					SUMMARY OF QUANTITIES			TOTAL QUANTITIES URBAN	CONSTRUCTION TYPE CODE					
CODE NO	ITEM	UNIT		0005 80% FED 20% STATE	0005 100% STATE					CODE NO	ITEM		UNIT	0005 80% FED 20% STATE	0005 100% STATE			
20201200	REMOVAL AND DISPOSAL OF UNSUITABLE MATERIAL	CU YD	100	100					42001300	PROTECTIVE COAT	SO YD	11	11					
21101615	TOPSOIL FURNISH AND PLACE, 4"	SO YD	8	8					44000158	HOT-MIX ASPHALT SURFACE REMOVAL, 2 1/4"	SO YD	65655	65655					
25000400	NITROGEN FERTILIZER NUTRIENT	POUND	1	1					44002209	HOT-MIX ASPHALT REMOVAL OVER PATCHES, 2 1/4"	SO YD	2050	2050					
25000500	PHOSPHORUS FERTILIZER NUTRIENT	POUND	1	1					44201749	CLASS D PATCHES, TYPE I, 9 INCH	SO YD	150	150					
25000600	POTASSIUM FERTILIZER NUTRIENT	POUND	1	1					44201753	CLASS D PATCHES, TYPE II, 9 INCH	SO YD	300	300					
25200110	SODDING, SALT TOLERANT	SO YD	19	19					44201757	CLASS D PATCHES, TYPE III, 9 INCH	SO YD	600	600					
30300001	AGGREGATE SUBGRADE IMPROVEMENT	CU YD	100	100					44201759	CLASS D PATCHES, TYPE IV, 9 INCH	SO YD	1000	1000					
40600290	BITUMINOUS MATERIALS (TACK COAT)	POUND	44320	44320					48102100	AGGREGATE WEDGE SHOULDER, TYPE B	TON	676	676					
40600400	MIXTURE FOR CRACKS, JOINTS, AND FLANGEWAYS	TON	99	99					64200108	SHOULDER RUMBLE STRIPS, 8 INCH	FOOT	33792	33792					
40600982	HOT-MIX ASPHALT SURFACE REMOVAL - BUTT JOINT	SO YD	165	165				*	66900200	NON-SPECIAL WASTE DISPOSAL	CU YD	100	100					
40601005	HOT-MIX ASPHALT REPLACEMENT OVER PATCHES	TON	260	260				*	66900530	SOIL DISPOSAL ANALYSIS	EACH	4	4					
40603200	POLYMERIZED HOT-MIX ASPHALT BINDER COURSE, IL-4.75, N50	TON	2760	2760				*	66901001	REGULATED SUBSTANCES PRE-CONSTRUCTION PLAN	LSUM	1	1					
40604062	HOT-MIX ASPHALT SURFACE COURSE, IL-9.5, MIX "D", N70	TON	5515	5515				*	66901003	REGULATED SUBSTANCES FINAL CONSTRUCTION REPORT	LSUM	1	1					
								*	66901006	REGULATED SUBSTANCES MONITORING	CAL DA	4	4					

* = SPECIALTY ITEMS
 Δ = NON-PARTICIPATING WORK (100% STATE)

FILE NAME =	USER NAME = lab001djm	DESIGNED -	REVISED -
pw:\planroom\dtd\illinois\gov\PI001\Documents\VDOT	Offices\District\Projects\DI29220\CAO\Date\Design\DI29220-1	DRAWN -	REVISED -
		CHECKED -	REVISED -
		DATE -	REVISED -

**STATE OF ILLINOIS
DEPARTMENT OF TRANSPORTATION**

**NEW AVENUE (LONG RUN CREEK TO COOK COUNTY LINE)
SUMMARY OF QUANTITIES**

F.A. RTE.	SECTION	COUNTY	TOTAL SHEETS	SHEET NO.
	2019-141-R5	WILL	28	4
FED. ROAD DIST. NO. 1 (ILLINOIS) FED. AID PROJECT			CONTRACT NO. 62K15	

SUMMARY OF QUANTITIES			TOTAL QUANTITIES URBAN	CONSTRUCTION TYPE CODE				SUMMARY OF QUANTITIES			TOTAL QUANTITIES URBAN	CONSTRUCTION TYPE CODE			
CODE NO	ITEM	UNIT		0005 80% FED 20% STATE	0005 100% STATE					0005 80% FED 20% STATE		0005 100% STATE			
67000400	ENGINEER'S FIELD OFFICE, TYPE A	CAL MO	6	6											
67100100	MOBILIZATION	L SUM	1	1											
70100450	TRAFFIC CONTROL AND PROTECTION, STANDARD 701201	L SUM	1	1					*	78000100	THERMOPLASTIC PAVEMENT MARKING - LETTERS AND SYMBOLS	SO FT	190	190	
70100460	TRAFFIC CONTROL AND PROTECTION, STANDARD 701306	L SUM	1	1					*	78000200	THERMOPLASTIC PAVEMENT MARKING - LINE 4"	FOOT	48842	48842	
70102620	TRAFFIC CONTROL AND PROTECTION, STANDARD 701501	L SUM	1	1					*	78000400	THERMOPLASTIC PAVEMENT MARKING - LINE 6"	FOOT	130	130	
70102622	TRAFFIC CONTROL AND PROTECTION, STANDARD 701502	L SUM	1	1					*	78000600	THERMOPLASTIC PAVEMENT MARKING - LINE 12"	FOOT	130	130	
70102635	TRAFFIC CONTROL AND PROTECTION, STANDARD 701701	L SUM	1	1					*	78000650	THERMOPLASTIC PAVEMENT MARKING - LINE 24"	FOOT	70	70	
70300100	SHORT TERM PAVEMENT MARKING	FOOT	32690	32690					*	78100100	RAISED REFLECTIVE PAVEMENT MARKER	EACH	385	385	
70300150	SHORT TERM PAVEMENT MARKING REMOVAL	SO FT	10897	10897						78300200	RAISED REFLECTIVE PAVEMENT MARKER REMOVAL	EACH	385	385	
70300210	TEMPORARY PAVEMENT MARKING LETTERS AND SYMBOLS	SO FT	364	364						88600600	DETECTOR LOOP REPLACEMENT	FOOT	234	234	
70300220	TEMPORARY PAVEMENT MARKING - LINE 4"	FOOT	68000	68000											
70300240	TEMPORARY PAVEMENT MARKING - LINE 6"	FOOT	451	451						X0326898	CENTER LINE - RUMBLE STRIP - 16"	FOOT	16896	16896	
70300260	TEMPORARY PAVEMENT MARKING - LINE 12"	FOOT	126	126						X2020110	GRADING AND SHAPING SHOULDERS	UNIT	338	338	

* = SPECIALTY ITEMS
 △ = NON-PARTICIPATING WORK (100% STATE)

LEGEND - EXISTING:

- (A) PCC PAVEMENT
- (B) HMA PAVEMENT
- (C) COMBINATION CONCRETE CURB AND GUTTER
- (D) HMA SHOULLDER
- (E) AGGREGATE SHOULDER
- (F) REMOVAL AND DISPOSAL OF UNSUITABLE MATERIAL

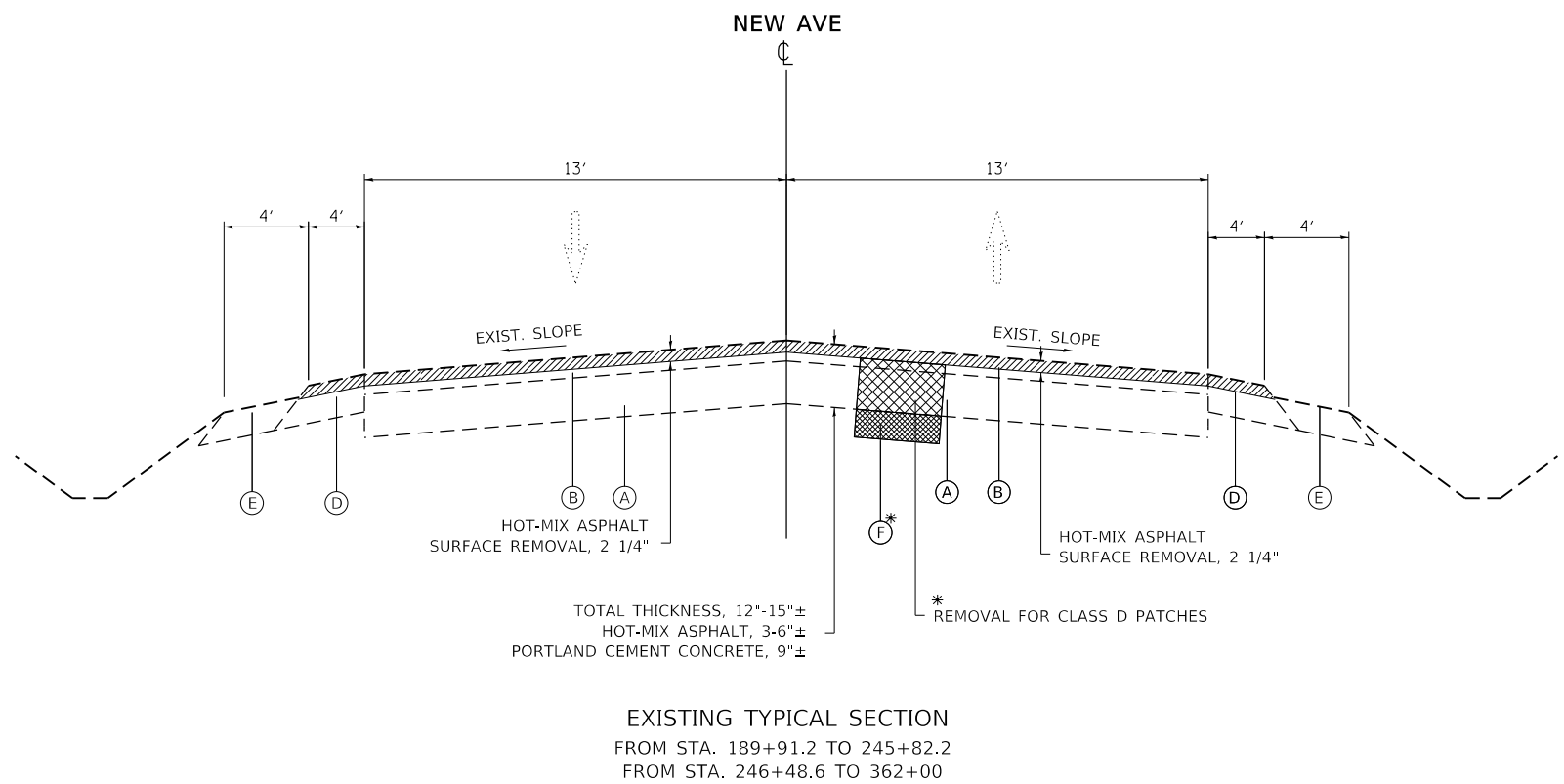
NOTES:

- 1.) THE CONTRACTOR SHALL PATCH FIRST BEFORE MILLING.
- 2.) THE LONGITUDINAL JOINT SEALANT SHALL BE PLACED OVER THE POLYMERIZED HOT-MIX ASPHALT BINDER COURSE, IL-4.75, N50, 3/4"

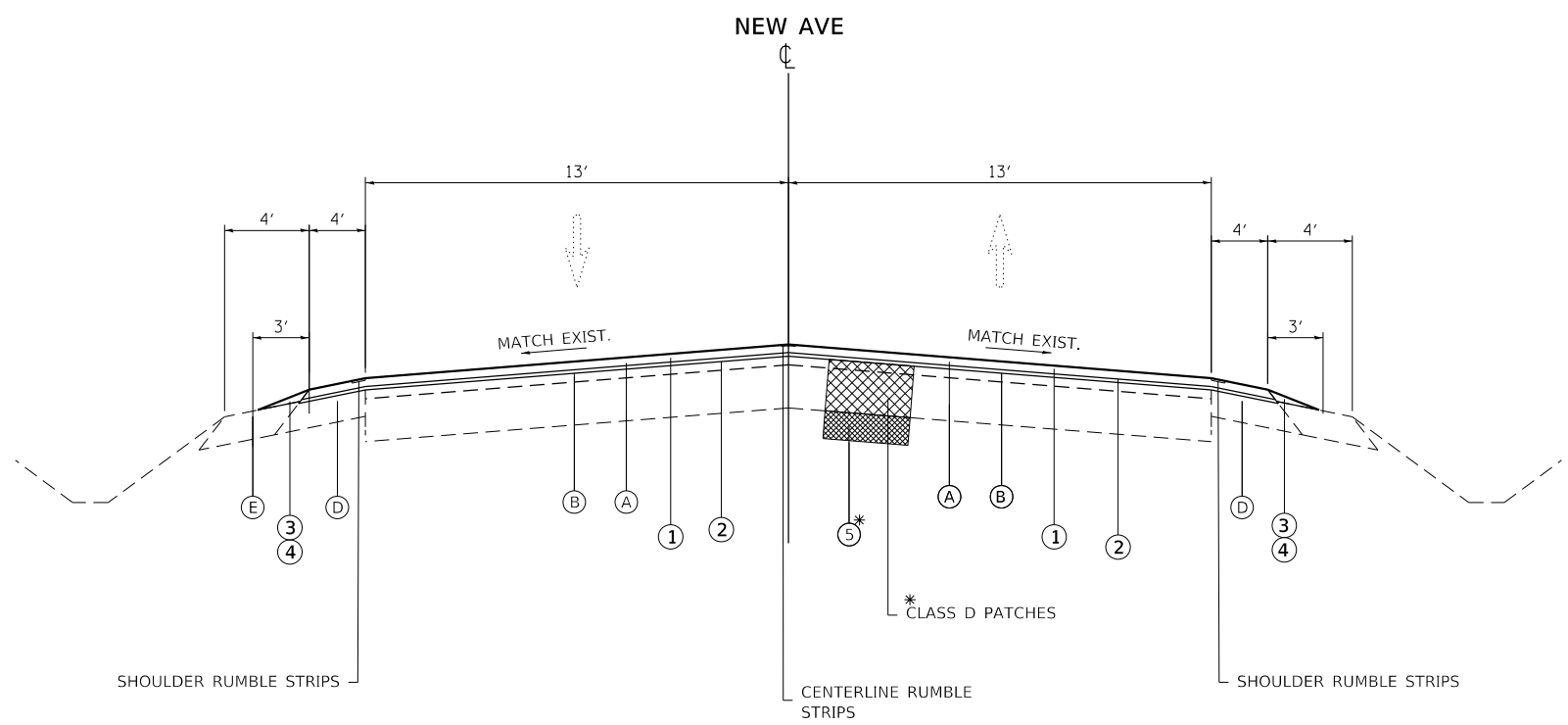
LEGEND - PROPOSED

- ① HOT-MIX ASPHALT SURFACE COURSE, MIX "D" IL 9.5, N70, 1 1/2"
- ② POLYMERIZED HOT-MIX ASPHALT BINDER COURSE, IL-4.75, N50, 3/4"
- ③ GRADING AND SHAPING SHOULDERS
- ④ AGGREGATE WEDGE SHOULDER, TYPE B
- ⑤ AGGREGATE SUBGRADE IMPROVEMENT (30300001)

* AT LOCATIONS AS DETERMINED BY THE ENGINEER



EXISTING TYPICAL SECTION
 FROM STA. 189+91.2 TO 245+82.2
 FROM STA. 246+48.6 TO 362+00



PROPOSED TYPICAL SECTION
 FROM STA. 189+91.2 TO 245+82.2
 FROM STA. 246+48.6 TO 362+00

HOT-MIX ASPHALT MIXTURE REQUIREMENTS		QUALITY MANAGEMENT PROGRAM (QMP)
MIXTURE TYPE	AIR VOIDS @ Ndes	
PAVEMENT RESURFACING		
HOT-MIX ASPHALT SURFACE COURSE, MIX "D" IL 9.5, N70, 1 1/2"	4.0% AT 70 GYR	QCP
POLYMERIZED HOT-MIX ASPHALT BINDER COURSE, IL-4.75, N50, 3/4"	3.5% AT 50 GYR	QCP
PATCHING		
CLASS D PATCHES (HMA BINDER IL-19 mm)	4.0% AT 70 GYR	QC/QA
HOT-MIX ASPHALT REPLACEMENT OVER PATCHES (HOT-MIX ASPHALT BINDER IL-19.0)	4.0% AT 70 GYR	QC/QA
QMP DESIGNATION: QUALITY CONTROL/QUALITY ASSURANCE (QC/QA); QUALITY CONTROL FOR PERFORMANCE (QCP)		

- NOTE 1: THE UNIT WEIGHT USED TO CALCULATE ALL HMA SURFACE MIXTURE QUANTITIES IS 112 LBS/SQ YD/IN.
- NOTE 2: THE "AC TYPE" FOR POLYMERIZED HMA MIXES SHALL BE "SBS/SBR PG 76-22" AND FOR NON-POLYMERIZED HMA THE "AC TYPE" SHALL BE "PG 64-22" UNLESS MODIFIED BY DISTRICT ONE SPECIAL PROVISIONS. FOR USE OF RECYCLED MATERIALS SEE SPECIAL PROVISIONS.
- NOTE 3: QUALITY MANAGEMENT PROGRAM (QMP) IDENTIFIES THE PARTICULAR QUALITY CONTROL SPECIFICATION THAT APPLIES TO THE HMA MIXTURE.

MODEL: Default
 FILE: Model: Proj\pub\barroom.dwg\illinois.gov\WIDOT\Documents\DOT_Offices\Illinetec_1\Projects\129220\CaddData\Design\129220-sh-detailed.dgn

USER NAME = lababidim	DESIGNED -	REVISED -
	DRAWN -	REVISED -
PLOT SCALE = 100.0000' / in.	CHECKED -	REVISED -
PLOT DATE = 12/26/2019	DATE -	REVISED -

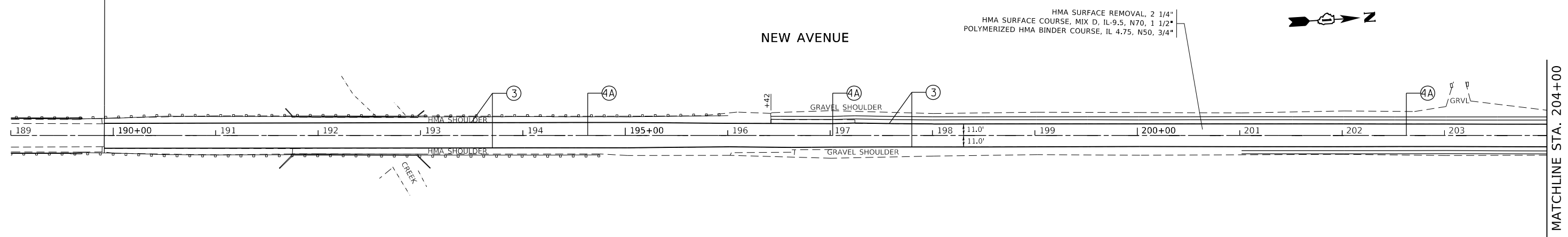
**STATE OF ILLINOIS
 DEPARTMENT OF TRANSPORTATION**

NEW AVENUE (LONG RUN CREEK TO COOK COUNTY LINE)	
TYPICAL SECTIONS	
SCALE:	SHEET OF SHEETS STA. TO STA.

F.A.U. RTE.	SECTION	COUNTY	TOTAL SHEETS	SHEET NO.
361	2019-141-R5	WILL	28	7
CONTRACT NO. 62K15				
ILLINOIS FED. AID PROJECT				

PROJECT BEGINS
STA. 189+91.2

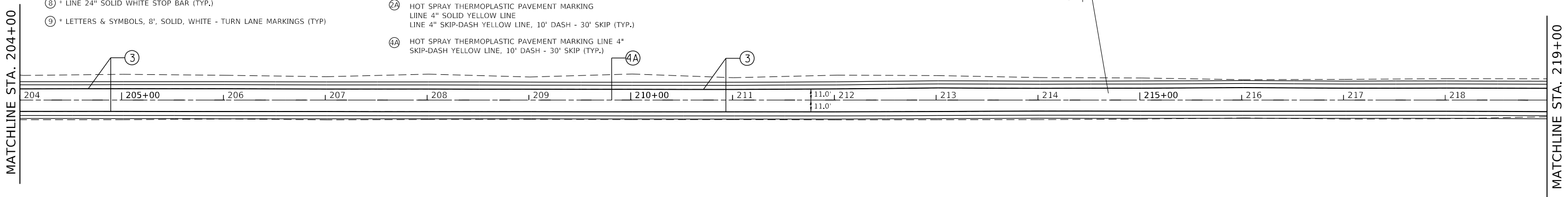
RUMBLE STRIPS LIMIT
STA. 189+91.2



LEGEND: PROPOSED PAVEMENT STRIPING

* = THERMOPLASTIC PAVEMENT MARKING -

- ① * LINE 4" DOUBLE SOLID YELLOW LINE, 2 @ 11" C-C (TYP.)
- ② * LINE 4" SOLID YELLOW LINE
- ③ * LINE 4" SOLID WHITE EDGE LINE (TYP.)
- ④ * LINE 4" SKIP-DASH YELLOW LINE, 10' DASH - 30' SKIP (TYP.)
- ⑤ * LINE 6" SOLID WHITE TURN LANE LINE (TYP.)
- ⑥ * LINE 6" SOLID WHITE CROSSWALK LINE (TYP.)
- ⑦ * LINE 6" SKIP-DASH WHITE LINE, 2' DASH - 6' SKIP (TYP.)
- ⑧ * LINE 24" SOLID WHITE STOP BAR (TYP.)
- ⑨ * LETTERS & SYMBOLS, 8", SOLID, WHITE - TURN LANE MARKINGS (TYP.)
- ⑩ * LINE 12", SOLID, WHITE - CROSSWALK LINES, LONGITUDINAL BARS (SCHOOL), (TYP), (SEE DISTRICT DETAIL TC-13 FOR SPACING)
- ⑪ * LINE 8" SOLID WHITE GORE MARKING AND CHANNELIZING LINES, 12" DIAGONALS @ 45 DEG.
- ⑫ * LINE 4" SKIP-DASH WHITE LINE, 10' DASH - 30' SKIP (TYP.)
- ⑬ * LINE 12", YELLOW - GORE MARKING AND CHANNELIZATION LINES 45°, (TYP) (SEE TC-12 FOR DETAILS)
- ⑭ * LINE 12", SOLID, WHITE - CHEVRON MARKING AND CHANNELIZING LINES (TYP)
- ⑮ * LINE 4" SOLID YELLOW LINE
LINE 4" SKIP-DASH YELLOW LINE, 10' DASH - 30' SKIP (TYP.)
- ⑯A HOT SPRAY THERMOPLASTIC PAVEMENT MARKING LINE 4" DOUBLE SOLID YELLOW LINE, 2 @ 11" C-C (TYP.)
- ⑰A HOT SPRAY THERMOPLASTIC PAVEMENT MARKING LINE 4" SOLID YELLOW LINE
LINE 4" SKIP-DASH YELLOW LINE, 10' DASH - 30' SKIP (TYP.)
- ⑱A HOT SPRAY THERMOPLASTIC PAVEMENT MARKING LINE 4" SKIP-DASH YELLOW LINE, 10' DASH - 30' SKIP (TYP.)



NOTES:

- 1) LIMIT OF RESURFACING ON THE SIDE- STREETS THROUGHOUT THE PROJECT SHALL BE TO THE RADIUS RETURN, UNLESS OTHERWISE SHOWN ON THE PLANS, OR AS DIRECTED BY THE RESIDENT ENGINEER / TECHNICIAN.
- 2) ALL FINAL PAVEMENT MARKINGS SHALL BE THERMOPLASTIC PAVEMENT MARKINGS .
- 3) ALL FINAL PAVEMENT MARKINGS SHALL BE PLACED IN ACCORDANCE WITH TC-13 "DISTRICT ONE TYPICAL PAVEMENT MARKINGS" STANDARD DETAIL.
- 4) ALL RAISED REFLECTIVE PAVEMENT MARKERS SHALL BE PLACED IN ACCORDANCE WITH TC-11 "TYPICAL APPLICATIONS RAISED REFLECTIVE PAVEMENT MARKERS (SNOW-PLOW RESISTANT)" STANDARD DETAIL.

MODEL: Default
FILE: h:\mhc\proj\pub\room.dta\illinois.gov\RWIDOT\Documents\DOT_Offices\District 1\Projects\122220\CaddData\Design\122220-sh-eb-lan.dgn

USER NAME = lababidim	DESIGNED -	REVISED -
PLOT SCALE = 100.0000' / in.	DRAWN -	REVISED -
PLOT DATE = 12/26/2019	CHECKED -	REVISED -
	DATE -	REVISED -

**STATE OF ILLINOIS
DEPARTMENT OF TRANSPORTATION**

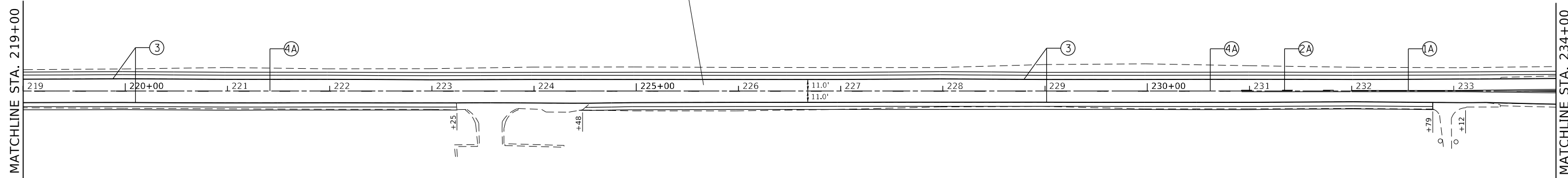
ROADWAY AND PAVEMENT MARKING PLAN
NEW AVE. (LONG RUN CREEK - COOK COUNTY LINE)

SCALE: 1"=50' SHEET OF SHEETS STA. TO STA.

F.A.U. RTE.	SECTION	COUNTY	TOTAL SHEETS	SHEET NO.
361	2019-141-R5	WILL	28	8
CONTRACT NO. 62K15				
ILLINOIS FED. AID PROJECT				

HMA SURFACE REMOVAL, 2 1/4"
 HMA SURFACE COURSE, MIX D, IL-9.5, N70, 1 1/2"
 POLYMERIZED HMA BINDER COURSE, IL 4.75, N50, 3/4"

NEW AVENUE

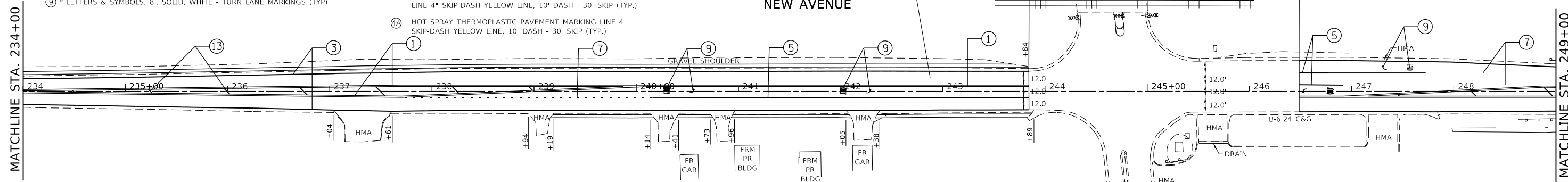


LEGEND: PROPOSED PAVEMENT STRIPING

* = THERMOPLASTIC PAVEMENT MARKING -

- ① * LINE 4" DOUBLE SOLID YELLOW LINE, 2 @ 11" C-C (TYP.)
- ② * LINE 4" SOLID YELLOW LINE
- ③ * LINE 4" SOLID WHITE EDGE LINE (TYP.)
- ④ * LINE 4" SKIP-DASH YELLOW LINE, 10' DASH - 30' SKIP (TYP.)
- ⑤ * LINE 6" SOLID WHITE TURN LANE LINE (TYP.)
- ⑥ * LINE 6" SOLID WHITE CROSSWALK LINE (TYP.)
- ⑦ * LINE 6" SKIP-DASH WHITE LINE, 2' DASH - 6' SKIP (TYP.)
- ⑧ * LINE 24" SOLID WHITE STOP BAR (TYP.)
- ⑨ * LETTERS & SYMBOLS, 8", SOLID, WHITE - TURN LANE MARKINGS (TYP.)

- ⑩ * LINE 12", SOLID, WHITE - CROSSWALK LINES, LONGITUDINAL BARS (SCHOOL), (TYP), (SEE DISTRICT DETAIL TC-13 FOR SPACING)
- ⑪ * LINE 8" SOLID WHITE GORE MARKING AND CHANNELIZING LINES, 12" DIAGONALS @ 45 DEG.
- ⑫ * LINE 4" SKIP-DASH WHITE LINE, 10' DASH - 30' SKIP (TYP.)
- ⑬ * LINE 12", YELLOW - GORE MARKING AND CHANNELIZATION LINES 45°, (TYP) (SEE TC-12 FOR DETAILS)
- ⑭ * LINE 12", SOLID, WHITE - CHEVRON MARKING AND CHANNELIZING LINES (TYP.)
- ⑮ * LINE 4" SOLID YELLOW LINE
LINE 4" SKIP-DASH YELLOW LINE, 10' DASH - 30' SKIP (TYP.)
- ⑯ HOT SPRAY THERMOPLASTIC PAVEMENT MARKING LINE 4" DOUBLE SOLID YELLOW LINE, 2 @ 11" C-C (TYP.)
- ⑰ HOT SPRAY THERMOPLASTIC PAVEMENT MARKING LINE 4" SOLID YELLOW LINE
LINE 4" SKIP-DASH YELLOW LINE, 10' DASH - 30' SKIP (TYP.)
- ⑱ HOT SPRAY THERMOPLASTIC PAVEMENT MARKING LINE 4" SKIP-DASH YELLOW LINE, 10' DASH - 30' SKIP (TYP.)



NOTES:

- 1) LIMIT OF RESURFACING ON THE SIDE- STREETS THROUGHOUT THE PROJECT SHALL BE TO THE RADIUS RETURN, UNLESS OTHERWISE SHOWN ON THE PLANS, OR AS DIRECTED BY THE RESIDENT ENGINEER / TECHNICIAN.
- 2) ALL FINAL PAVEMENT MARKINGS SHALL BE THERMOPLASTIC PAVEMENT MARKINGS .
- 3) ALL FINAL PAVEMENT MARKINGS SHALL BE PLACED IN ACCORDANCE WITH TC-13 "DISTRICT ONE TYPICAL PAVEMENT MARKINGS" STANDARD DETAIL.
- 4) ALL RAISED REFLECTIVE PAVEMENT MARKERS SHALL BE PLACED IN ACCORDANCE WITH TC-11 "TYPICAL APPLICATIONS RAISED REFLECTIVE PAVEMENT MARKERS (SNOW-PLOW RESISTANT)" STANDARD DETAIL.

MODEL: Default
 FILE: h:\mhc_p\pub\haronom.d\at\illinois.gov\PWIDOT\Documents\DOT_Offices\District_1\Projects\129220\Cadd\Drawings\129220-sh-cb-01.dwg

USER NAME = lababidim	DESIGNED -	REVISED -
	DRAWN -	REVISED -
PLOT SCALE = 100,0000' / in.	CHECKED -	REVISED -
PLOT DATE = 12/26/2019	DATE -	REVISED -

**STATE OF ILLINOIS
 DEPARTMENT OF TRANSPORTATION**

**ROADWAY AND PAVEMENT MARKING PLAN
 NEW AVE. (LONG RUN CREEK - COOK COUNTY LINE)**

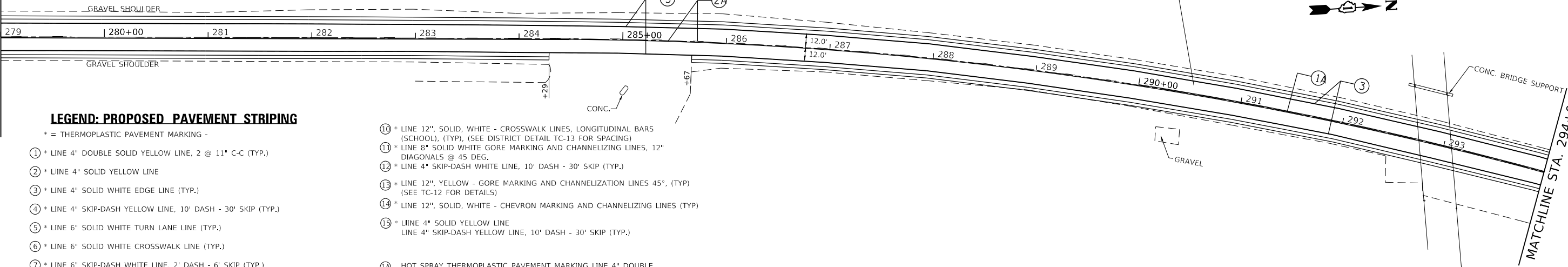
SCALE: 1"=50' SHEET OF SHEETS STA. TO STA.

F.A.U. RTE.	SECTION	COUNTY	TOTAL SHEETS	SHEET NO.
361	2019-141-R5	WILL	28	9
CONTRACT NO. 62K15				
ILLINOIS FED. AID PROJECT				

NEW AVENUE

HMA SURFACE REMOVAL, 2 1/4"
HMA SURFACE COURSE, MIX D, IL-9.5, N70, 1 1/2"
POLYMERIZED HMA BINDER COURSE, IL 4.75, N50, 3/4"

MATCHLINE STA. 279+00



LEGEND: PROPOSED PAVEMENT STRIPING

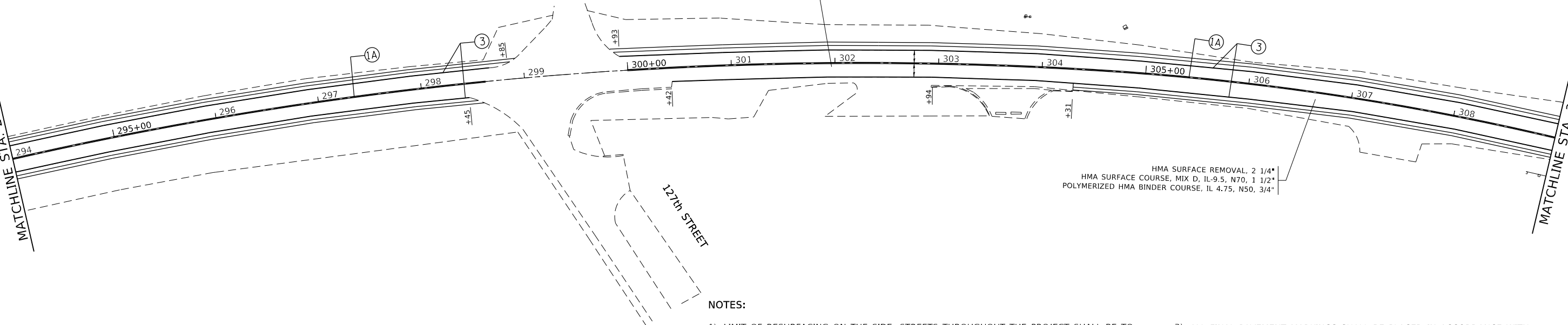
* = THERMOPLASTIC PAVEMENT MARKING -

- ① * LINE 4" DOUBLE SOLID YELLOW LINE, 2 @ 11" C-C (TYP.)
- ② * LINE 4" SOLID YELLOW LINE
- ③ * LINE 4" SOLID WHITE EDGE LINE (TYP.)
- ④ * LINE 4" SKIP-DASH YELLOW LINE, 10' DASH - 30' SKIP (TYP.)
- ⑤ * LINE 6" SOLID WHITE TURN LANE LINE (TYP.)
- ⑥ * LINE 6" SOLID WHITE CROSSWALK LINE (TYP.)
- ⑦ * LINE 6" SKIP-DASH WHITE LINE, 2' DASH - 6' SKIP (TYP.)
- ⑧ * LINE 24" SOLID WHITE STOP BAR (TYP.)
- ⑨ * LETTERS & SYMBOLS, 8", SOLID, WHITE - TURN LANE MARKINGS (TYP.)
- ⑩ * LINE 12", SOLID, WHITE - CROSSWALK LINES, LONGITUDINAL BARS (SCHOOL), (TYP), (SEE DISTRICT DETAIL TC-13 FOR SPACING)
- ⑪ * LINE 8" SOLID WHITE GORE MARKING AND CHANNELIZING LINES, 12" DIAGONALS @ 45 DEG.
- ⑫ * LINE 4" SKIP-DASH WHITE LINE, 10' DASH - 30' SKIP (TYP.)
- ⑬ * LINE 12", YELLOW - GORE MARKING AND CHANNELIZATION LINES 45°, (TYP) (SEE TC-12 FOR DETAILS)
- ⑭ * LINE 12", SOLID, WHITE - CHEVRON MARKING AND CHANNELIZING LINES (TYP)
- ⑬ * LINE 4" SOLID YELLOW LINE
LINE 4" SKIP-DASH YELLOW LINE, 10' DASH - 30' SKIP (TYP.)
- ①A HOT SPRAY THERMOPLASTIC PAVEMENT MARKING LINE 4" DOUBLE SOLID YELLOW LINE, 2 @ 11" C-C (TYP.)
- ②A HOT SPRAY THERMOPLASTIC PAVEMENT MARKING LINE 4" SOLID YELLOW LINE
LINE 4" SKIP-DASH YELLOW LINE, 10' DASH - 30' SKIP (TYP.)
- ④A HOT SPRAY THERMOPLASTIC PAVEMENT MARKING LINE 4" SKIP-DASH YELLOW LINE, 10' DASH - 30' SKIP (TYP.)

NEW AVENUE

HMA SURFACE REMOVAL, 2 1/4"
HMA SURFACE COURSE, MIX D, IL-9.5, N70, 1 1/2"
POLYMERIZED HMA BINDER COURSE, IL 4.75, N50, 3/4"

MATCHLINE STA. 294+00



NOTES:

- 1) LIMIT OF RESURFACING ON THE SIDE- STREETS THROUGHOUT THE PROJECT SHALL BE TO THE RADIUS RETURN, UNLESS OTHERWISE SHOWN ON THE PLANS, OR AS DIRECTED BY THE RESIDENT ENGINEER / TECHNICIAN.
- 2) ALL FINAL PAVEMENT MARKINGS SHALL BE THERMOPLASTIC PAVEMENT MARKINGS .
- 3) ALL FINAL PAVEMENT MARKINGS SHALL BE PLACED IN ACCORDANCE WITH TC-13 "DISTRICT ONE TYPICAL PAVEMENT MARKINGS" STANDARD DETAIL.
- 4) ALL RAISED REFLECTIVE PAVEMENT MARKERS SHALL BE PLACED IN ACCORDANCE WITH TC-11 "TYPICAL APPLICATIONS RAISED REFLECTIVE PAVEMENT MARKERS (SNOW-PLOW RESISTANT)" STANDARD DETAIL.

MODEL: Default
FILE: Model_PlanView.dwg
PROJECT: I:\Projects\122220\CADD\Drawings\122220-01-01.dwg

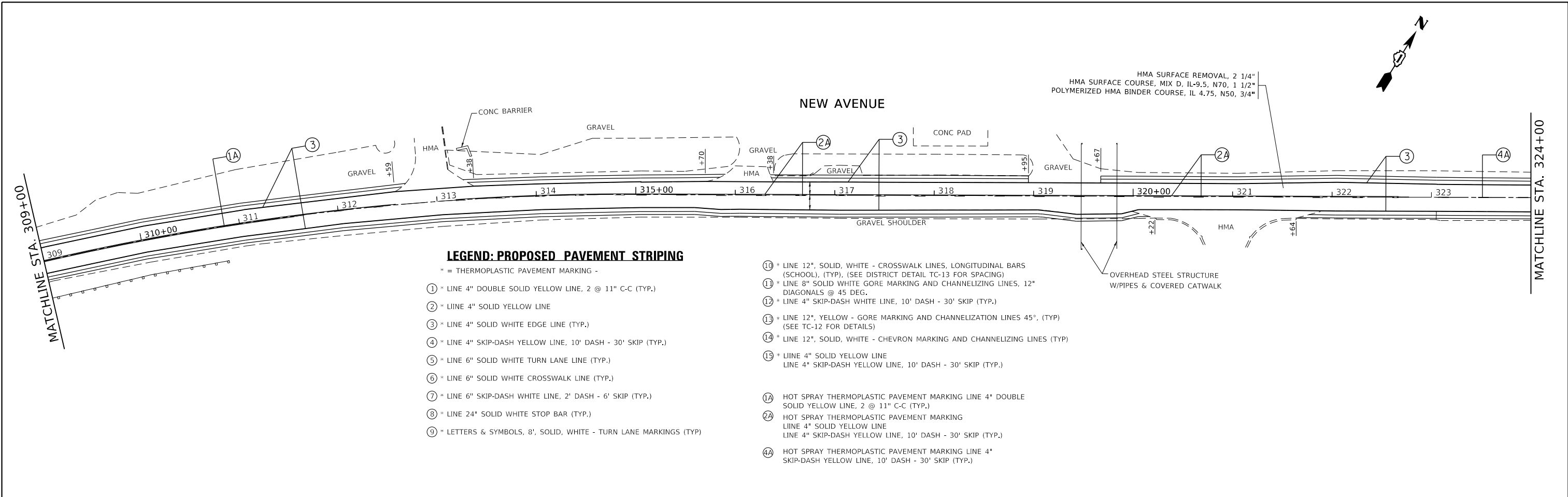
USER NAME = lababidim	DESIGNED -	REVISED -
PLOT SCALE = 100.0000' / in.	DRAWN -	REVISED -
PLOT DATE = 12/26/2019	CHECKED -	REVISED -
	DATE -	REVISED -

**STATE OF ILLINOIS
DEPARTMENT OF TRANSPORTATION**

**ROADWAY AND PAVEMENT MARKING PLAN
NEW AVE. (LONG RUN CREEK - COOK COUNTY LINE)**

SCALE: 1"=50' SHEET OF SHEETS STA. TO STA.

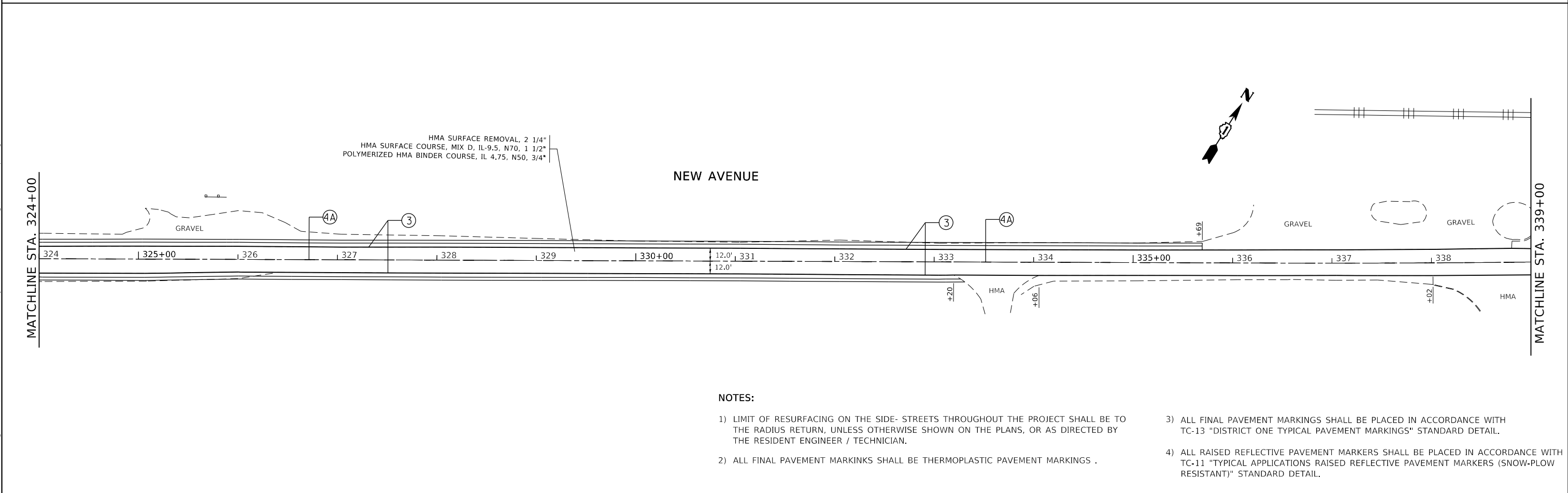
F.A.U. RTE.	SECTION	COUNTY	TOTAL SHEETS	SHEET NO.
361	2019-141-R5	WILL	28	11
CONTRACT NO. 62K15				
ILLINOIS FED. AID PROJECT				



LEGEND: PROPOSED PAVEMENT STRIPING

- * = THERMOPLASTIC PAVEMENT MARKING -
- ① * LINE 4" DOUBLE SOLID YELLOW LINE, 2 @ 11" C-C (TYP.)
- ② * LINE 4" SOLID YELLOW LINE
- ③ * LINE 4" SOLID WHITE EDGE LINE (TYP.)
- ④ * LINE 4" SKIP-DASH YELLOW LINE, 10' DASH - 30' SKIP (TYP.)
- ⑤ * LINE 6" SOLID WHITE TURN LANE LINE (TYP.)
- ⑥ * LINE 6" SOLID WHITE CROSSWALK LINE (TYP.)
- ⑦ * LINE 6" SKIP-DASH WHITE LINE, 2' DASH - 6' SKIP (TYP.)
- ⑧ * LINE 24" SOLID WHITE STOP BAR (TYP.)
- ⑨ * LETTERS & SYMBOLS, 8", SOLID, WHITE - TURN LANE MARKINGS (TYP)

- ⑩ * LINE 12", SOLID, WHITE - CROSSWALK LINES, LONGITUDINAL BARS (SCHOOL), (TYP.), (SEE DISTRICT DETAIL TC-13 FOR SPACING)
- ⑪ * LINE 8" SOLID WHITE GORE MARKING AND CHANNELIZING LINES, 12" DIAGONALS @ 45 DEG.
- ⑫ * LINE 4" SKIP-DASH WHITE LINE, 10' DASH - 30' SKIP (TYP.)
- ⑬ * LINE 12", YELLOW - GORE MARKING AND CHANNELIZATION LINES 45°, (TYP) (SEE TC-12 FOR DETAILS)
- ⑭ * LINE 12", SOLID, WHITE - CHEVRON MARKING AND CHANNELIZING LINES (TYP)
- ⑮ * LINE 4" SOLID YELLOW LINE
LINE 4" SKIP-DASH YELLOW LINE, 10' DASH - 30' SKIP (TYP.)
- ①A HOT SPRAY THERMOPLASTIC PAVEMENT MARKING LINE 4" DOUBLE SOLID YELLOW LINE, 2 @ 11" C-C (TYP.)
- ②A HOT SPRAY THERMOPLASTIC PAVEMENT MARKING LINE 4" SOLID YELLOW LINE
LINE 4" SKIP-DASH YELLOW LINE, 10' DASH - 30' SKIP (TYP.)
- ④A HOT SPRAY THERMOPLASTIC PAVEMENT MARKING LINE 4" SKIP-DASH YELLOW LINE, 10' DASH - 30' SKIP (TYP.)



NOTES:

- 1) LIMIT OF RESURFACING ON THE SIDE- STREETS THROUGHOUT THE PROJECT SHALL BE TO THE RADIUS RETURN, UNLESS OTHERWISE SHOWN ON THE PLANS, OR AS DIRECTED BY THE RESIDENT ENGINEER / TECHNICIAN.
- 2) ALL FINAL PAVEMENT MARKINGS SHALL BE THERMOPLASTIC PAVEMENT MARKINGS .
- 3) ALL FINAL PAVEMENT MARKINGS SHALL BE PLACED IN ACCORDANCE WITH TC-13 "DISTRICT ONE TYPICAL PAVEMENT MARKINGS" STANDARD DETAIL.
- 4) ALL RAISED REFLECTIVE PAVEMENT MARKERS SHALL BE PLACED IN ACCORDANCE WITH TC-11 "TYPICAL APPLICATIONS RAISED REFLECTIVE PAVEMENT MARKERS (SNOW-PLOW RESISTANT)" STANDARD DETAIL.

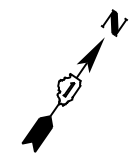
MODEL: Default
 FILE: h:\mhc\p\pub\barroom.dwg
 PROJECT: 129220\CaddData\Design\129220-sh-c-lan.dwg
 PROJECT: 129220\CaddData\Design\129220-sh-c-lan.dwg

USER NAME = lababidim	DESIGNED -	REVISED -
	DRAWN -	REVISED -
PLOT SCALE = 100,0000' / in.	CHECKED -	REVISED -
PLOT DATE = 12/26/2019	DATE -	REVISED -

**STATE OF ILLINOIS
DEPARTMENT OF TRANSPORTATION**

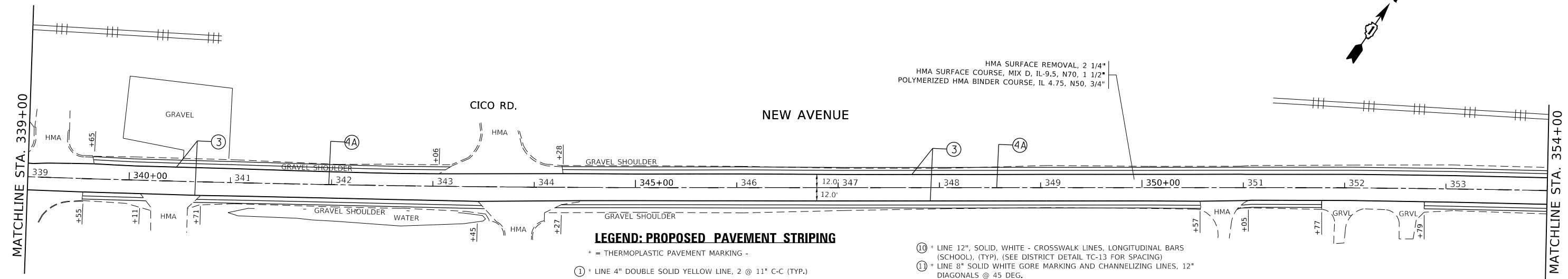
ROADWAY AND PAVEMENT MARKING PLAN			
NEW AVE. (LONG RUN CREEK - COOK COUNTY LINE)			
SCALE: 1"=50'	SHEET	OF SHEETS	STA. TO STA.

F.A.U. RTE.	SECTION	COUNTY	TOTAL SHEETS	SHEET NO.
361	2019-141-R5	WILL	28	12
CONTRACT NO. 62K15				
ILLINOIS FED. AID PROJECT				



MATCHLINE STA. 339+00

MATCHLINE STA. 354+00



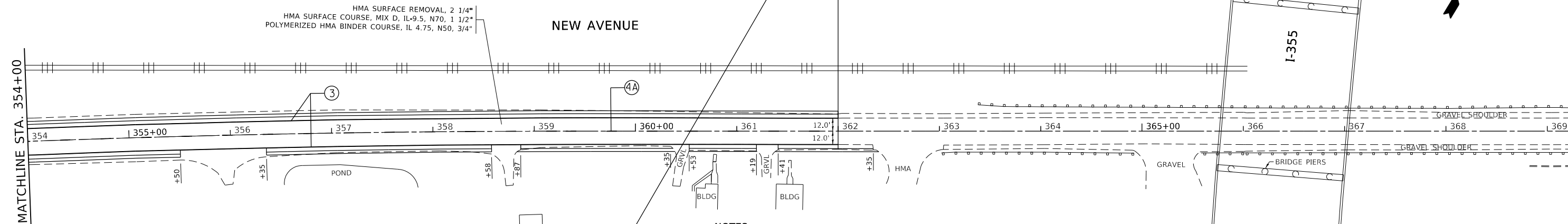
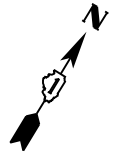
LEGEND: PROPOSED PAVEMENT STRIPING

- * = THERMOPLASTIC PAVEMENT MARKING -
- ① * LINE 4" DOUBLE SOLID YELLOW LINE, 2 @ 11" C-C (TYP.)
- ② * LINE 4" SOLID YELLOW LINE
- ③ * LINE 4" SOLID WHITE EDGE LINE (TYP.)
- ④ * LINE 4" SKIP-DASH YELLOW LINE, 10' DASH - 30' SKIP (TYP.)
- ⑤ * LINE 6" SOLID WHITE TURN LANE LINE (TYP.)
- ⑥ * LINE 6" SOLID WHITE CROSSWALK LINE (TYP.)
- ⑦ * LINE 6" SKIP-DASH WHITE LINE, 2' DASH - 6' SKIP (TYP.)
- ⑧ * LINE 24" SOLID WHITE STOP BAR (TYP.)
- ⑨ * LETTERS & SYMBOLS, 8'; SOLID, WHITE - TURN LANE MARKINGS (TYP.)
- ⑩ * LINE 12", SOLID, WHITE - CROSSWALK LINES, LONGITUDINAL BARS (SCHOOL), (TYP.). (SEE DISTRICT DETAIL TC-13 FOR SPACING)
- ⑪ * LINE 8" SOLID WHITE GORE MARKING AND CHANNELIZING LINES, 12" DIAGONALS @ 45 DEG.
- ⑫ * LINE 4" SKIP-DASH WHITE LINE, 10' DASH - 30' SKIP (TYP.)
- ⑬ * LINE 12", YELLOW - GORE MARKING AND CHANNELIZATION LINES 45°, (TYP) (SEE TC-12 FOR DETAILS)
- ⑭ * LINE 12", SOLID, WHITE - CHEVRON MARKING AND CHANNELIZING LINES (TYP)
- ⑮ * LINE 4" SOLID YELLOW LINE
LINE 4" SKIP-DASH YELLOW LINE, 10' DASH - 30' SKIP (TYP.)
- ①A HOT SPRAY THERMOPLASTIC PAVEMENT MARKING LINE 4" DOUBLE SOLID YELLOW LINE, 2 @ 11" C-C (TYP.)
- ②A HOT SPRAY THERMOPLASTIC PAVEMENT MARKING LINE 4" SOLID YELLOW LINE
LINE 4" SKIP-DASH YELLOW LINE, 10' DASH - 30' SKIP (TYP.)
- ④A HOT SPRAY THERMOPLASTIC PAVEMENT MARKING LINE 4" SKIP-DASH YELLOW LINE, 10' DASH - 30' SKIP (TYP.)

PROJECT ENDS
STA. 362+00

RUMBLE STRIPS/LIMIT
STA. 362+00

MATCHLINE STA. 354+00



NOTES:

- 1) LIMIT OF RESURFACING ON THE SIDE-STREETS THROUGHOUT THE PROJECT SHALL BE TO THE RADIUS RETURN, UNLESS OTHERWISE SHOWN ON THE PLANS, OR AS DIRECTED BY THE RESIDENT ENGINEER / TECHNICIAN.
- 2) ALL FINAL PAVEMENT MARKINGS SHALL BE THERMOPLASTIC PAVEMENT MARKINGS.
- 3) ALL FINAL PAVEMENT MARKINGS SHALL BE PLACED IN ACCORDANCE WITH TC-13 "DISTRICT ONE TYPICAL PAVEMENT MARKINGS" STANDARD DETAIL.
- 4) ALL RAISED REFLECTIVE PAVEMENT MARKERS SHALL BE PLACED IN ACCORDANCE WITH TC-11 "TYPICAL APPLICATIONS RAISED REFLECTIVE PAVEMENT MARKERS (SNOW-PLOW RESISTANT)" STANDARD DETAIL.

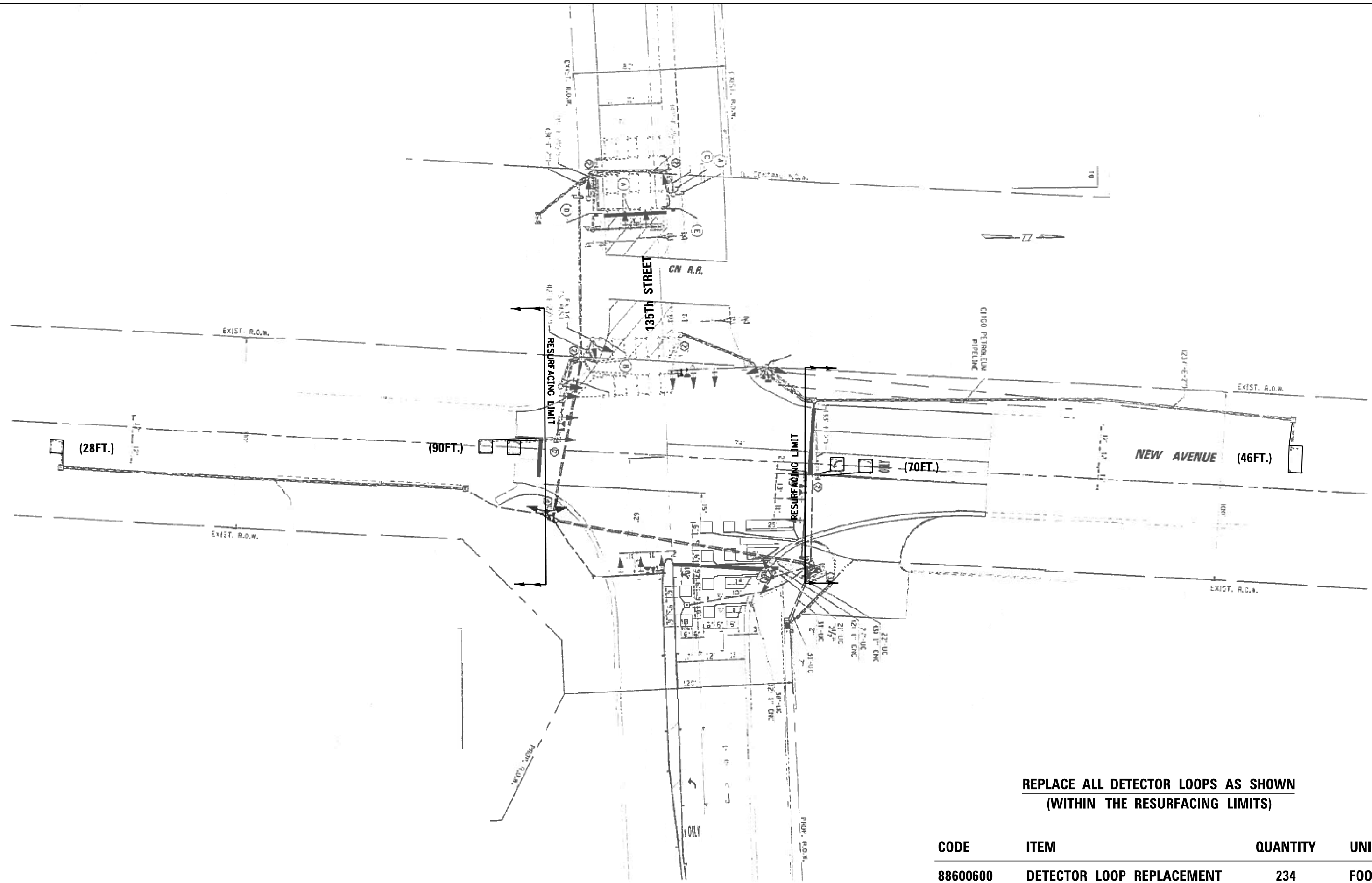
MODEL: Default
FILE: \\nrcs\pub\baronm.d\at\illinois.gov\PWIDOT\Documents\DOT_Offices\District_1\Projects\129220\CADD\Design\129220-sh-ct-lan.dgn

USER NAME = lababidim	DESIGNED -	REVISED -
	DRAWN -	REVISED -
PLOT SCALE = 100.0000' / in.	CHECKED -	REVISED -
PLOT DATE = 12/26/2019	DATE -	REVISED -

**STATE OF ILLINOIS
DEPARTMENT OF TRANSPORTATION**

**ROADWAY AND PAVEMENT MARKING PLAN
NEW AVE. (LONG RUN CREEK - COOK COUNTY LINE)**
SCALE: 1"=50' SHEET OF SHEETS STA. TO STA.

F.A.U. RTE.	SECTION	COUNTY	TOTAL SHEETS	SHEET NO.
361	2019-141-R5	WILL	28	13
CONTRACT NO. 62K15				
ILLINOIS FED. AID PROJECT				



**REPLACE ALL DETECTOR LOOPS AS SHOWN
(WITHIN THE RESURFACING LIMITS)**

CODE	ITEM	QUANTITY	UNIT
88600600	DETECTOR LOOP REPLACEMENT	234	FOOT

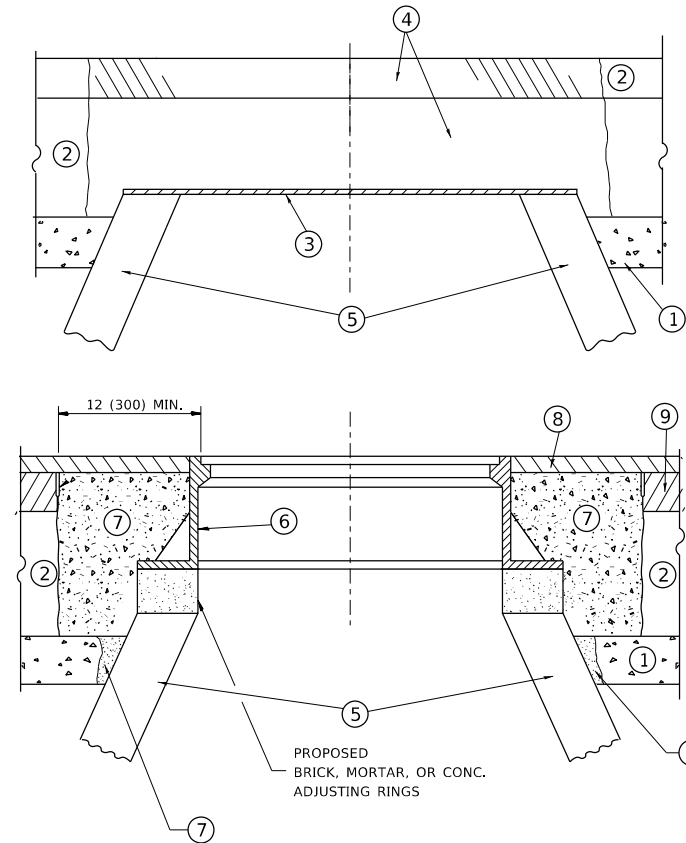
FILE NAME =	USER NAME = mezag	DESIGNED -	REVISED -
C:\Users\mezag\Desktop\Detector Loops\2019\62K15 (FAU 361 NEW AVENUE)-W11\CADD\T	DRAWN NEW AVENUE.G.M.	CHECKED - S.N.	REVISED -
Default	PLOT SCALE = 40,0000' / in.	DATE - 11/22/2019	REVISED -

**STATE OF ILLINOIS
DEPARTMENT OF TRANSPORTATION**

**DETECTOR LOOP REPLACEMENT PLAN
NEW AVENUE AT 135th ST.**

F.A. RTE.	SECTION	COUNTY	TOTAL SHEETS	SHEET NO.
361	2019-141-R5	WILL	28	14
CONTRACT NO. 62K15				
ILLINOIS FED. AID PROJECT				

SCALE: SHEET OF SHEETS STA. TO STA.



CONSTRUCTION PROCEDURES

STAGE 1 (BEFORE PAVEMENT MILLING)

- A) REMOVE A MINIMUM OF 12 (300) OF THE PAVEMENT FROM AROUND THE STRUCTURE.
- B) REMOVE THE EXISTING FRAME AND LID FROM THE STRUCTURE.
- C) COVER THE STRUCTURE OPENING WITH A 36 (900) DIAMETER METAL PLATE.
- D) BACKFILL WITH CRUSHED STONE AND A MINIMUM 1½ (40) THICK HMA SURFACE MIX APPROVED BY THE ENGINEER.

STAGE 2 (AFTER PAVEMENT MILLING)

- A) REMOVE THE HMA SURFACE MIX AND CRUSHED STONE.
- B) INSTALL THE FRAME AND LID; ADJUST THE FRAME TO ITS FINAL SURFACE ELEVATION.
- C) THE SURROUNDING SPACE SHALL BE FILLED WITH CLASS PP-1 * CONCRETE TO THE ELEVATION OF THE SURFACE OF THE EXISTING BASE COURSE OR THE BINDER COURSE.

* UNLESS OTHERWISE SPECIFIED IN THE PLANS.

THE PROCEDURE EXPLAINED ABOVE SHALL CONFORM TO THE APPLICABLE PORTIONS OF SECTIONS 353, 406, 602, AND 603 OF THE STANDARD SPECIFICATIONS EXCEPT THAT *THE CONTRACTOR SHALL ADJUST THE STRUCTURES TO THE FINISHED PAVEMENT ELEVATION NO MORE THAN 5 CALENDAR DAYS PRIOR TO PLACEMENT OF THE FINAL LIFT OF SURFACE UNLESS APPROVED BY THE ENGINEER."

LEGEND

- | | |
|--|-------------------------------|
| ① SUB-BASE GRANULAR MATERIAL | ⑥ FRAME AND LID (SEE NOTES) |
| ② EXISTING PAVEMENT | ⑦ CLASS PP-1 *CONCRETE |
| ③ 36 (900) DIAMETER METAL PLATE | ⑧ PROPOSED HMA SURFACE COURSE |
| ④ PROPOSED CRUSHED STONE AND HMA SURFACE MIX | ⑨ PROPOSED HMA BINDER COURSE |
| ⑤ EXISTING STRUCTURE | |

LOCATION OF STRUCTURES

THE CONTRACTOR WILL BE REQUIRED TO KEEP A RECORD OF THE LOCATIONS OF THE BURIED STRUCTURES ACCORDING TO THE STATION AND DISTANCE LEFT OR RIGHT OF THE CENTERLINE OF PAVEMENT. UPON COMPLETION OF THE WORK, THE CONTRACTOR WILL DELIVER THE RECORD TO THE ENGINEER.

BASIS OF PAYMENT

REMOVING FRAMES AND LIDS ON DRAINAGE AND UTILITY STRUCTURES IN THE PAVEMENT PRIOR TO MILLING, AND ADJUSTING TO FINAL GRADE PRIOR TO PLACING THE SURFACE COURSE, WILL BE PAID FOR AT THE CONTRACT UNIT PRICE EACH FOR *FRAMES AND LIDS TO BE ADJUSTED (SPECIAL).*

THIS WORK WILL NOT BE PAID FOR WHEN DRAINAGE AND UTILITY STRUCTURES ARE SPECIFIED FOR PAYMENT AS STRUCTURE RECONSTRUCTION.

NEW FRAMES AND LIDS, WHEN SPECIFIED, WILL BE PAID FOR SEPARATELY.

NOTES

EXISTING BROKEN FRAMES AND LIDS SHALL BE REMOVED AND DISPOSED OF BY THE CONTRACTOR AND SHALL BE REPLACED AS DIRECTED BY THE ENGINEER. REPLACEMENT FRAMES AND LIDS WILL BE PAID FOR IN ACCORDANCE WITH ARTICLE 109.04 OF THE STANDARD SPECIFICATIONS UNLESS A SEPARATE PAY ITEM HAS BEEN PROVIDED.

IF THE EXISTING LIDS ARE OPEN, THE FRAME WILL BE ADJUSTED TO THE ELEVATION OF THE MILLED PAVEMENT SURFACE PRIOR TO THE MILLING OPERATION. THE FRAME WILL NOT BE REMOVED AND COVERED BY THE METAL PLATE.

CITY OF CHICAGO CASTINGS ARE THE PROPERTY OF THE CITY AND THE CONTRACTOR SHALL NOTIFY THE CITY FOR REMOVAL AND DISPOSITION OF THE CASTINGS.

THE METAL PLATE USED TO COVER THE STRUCTURE SHALL REMAIN THE PROPERTY OF THE CONTRACTOR.

WHEN STRUCTURES ARE TO BE ADJUSTED OR RECONSTRUCTED, THE LOWERING AND RAISING OF THE FRAMES AND LIDS WILL NOT BE PAID FOR SEPARATELY BUT WILL BE INCLUDED IN THE COST OF THE CORRESPONDING PAY ITEM.

DETAILS FOR FRAMES AND LIDS ADJUSTMENT WITH MILLING

ALL DIMENSIONS ARE IN INCHES (MILLIMETERS) UNLESS OTHERWISE SHOWN

MODEL: Default
 FILE: h:\mhc_p\pub\haronom.dwg
 PROJECT: I:\Projects\129220\CADDData\Design\DESIGN.dwg

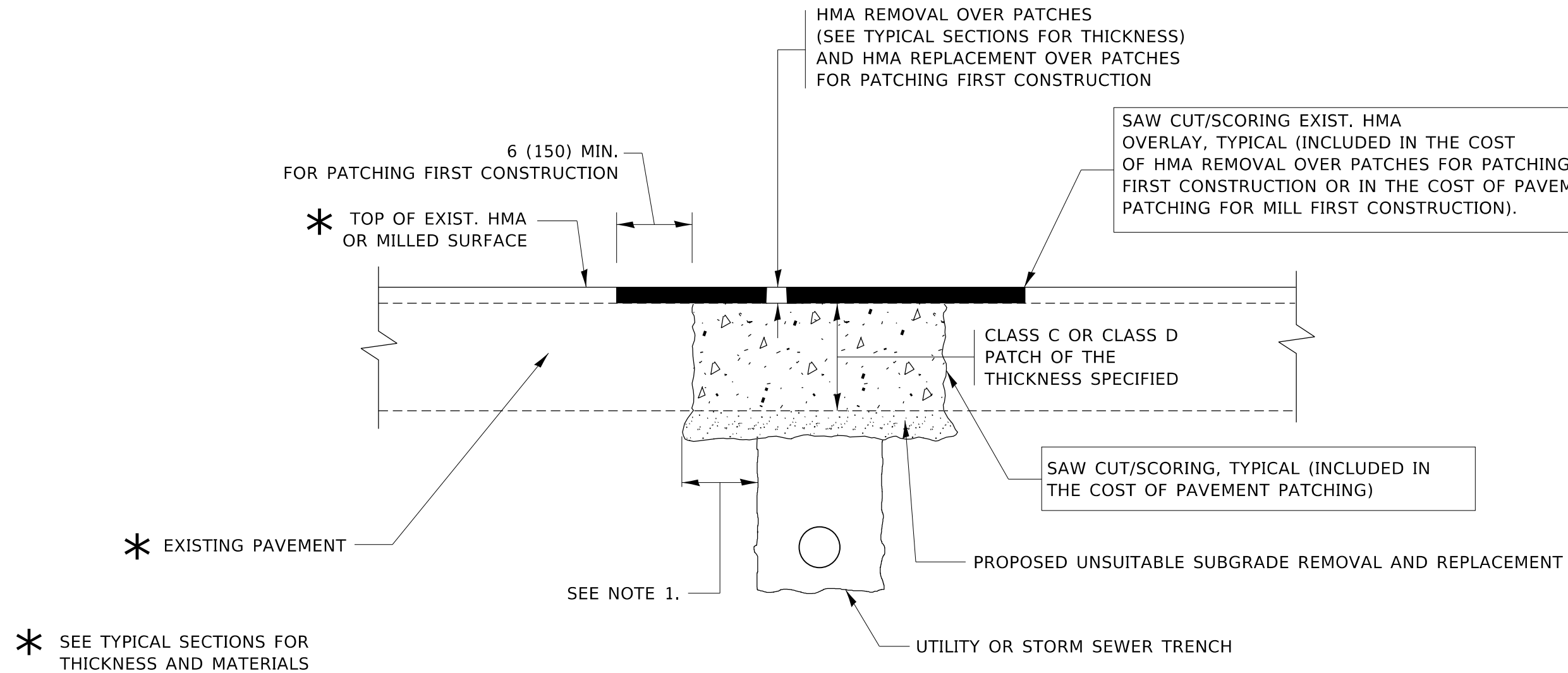
USER NAME = lababidim	DESIGNED - R. SHAH	REVISED - R. WEDEMAN 05-14-04
	DRAWN -	REVISED - R. BORO 01-01-07
PLOT SCALE = 100.0000 ' / in.	CHECKED -	REVISED - R. BORO 03-09-11
PLOT DATE = 12/26/2019	DATE - 10-25-94	REVISED - R. BORO 12-06-11

**STATE OF ILLINOIS
DEPARTMENT OF TRANSPORTATION**

**DETAILS FOR
FRAMES AND LIDS ADJUSTMENT WITH MILLING**

SCALE: NONE SHEET 1 OF 1 SHEETS STA. TO STA.

F.A.U. RTE.	SECTION	COUNTY	TOTAL SHEETS	SHEET NO.
361	2019-141-R5	WILL	28	17
BD600-03 (BD-8)		CONTRACT NO. 62K15		
ILLINOIS FED. AID PROJECT				



NOTES:

1. THE WIDTH OF THE FULL DEPTH PATCH OVER A TRENCH SHALL BE 12 (300) WIDER ON EACH SIDE OF THE TRENCH.
2. FOR METHOD OF MEASUREMENT AND BASIS OF PAYMENT, SEE RECURRING SPECIAL PROVISION "PATCHING WITH HOT-MIX ASPHALT OVERLAY REMOVAL".

SEQUENCE OF CONSTRUCTION (PATCHING FIRST)

1. REMOVE THE EXISTING HMA MATERIAL OVER THE AREA TO BE PATCHED.
2. REMOVE AND REPLACE WITH CLASS C OR D PATCH.
3. REPLACE HMA MATERIAL OVER THE AREA TO BE PATCHED.

SEQUENCE OF CONSTRUCTION (MILLING FIRST)

1. MILL HMA FIRST IF THERE IS AT LEAST 4½ INCHES OR MORE OF HMA MATERIAL ON TOP OF THE EXISTING PAVEMENT OR IF THE PAVEMENT IS FULL DEPTH HMA. A MINIMUM OF 2 INCHES OF HMA MATERIAL SHALL BE IN PLACE AFTER MILLING.
2. REMOVE AND REPLACE WITH FULL DEPTH CLASS D PATCHES TO TOP OF MILLED SURFACE.

ALL DIMENSIONS ARE IN INCHES (MILLIMETERS) UNLESS OTHERWISE SHOWN.

MODEL: Default
 FILE: hma15c_patchplanroom.dwg
 PROJECT: RWIS/ITD/Projects/2019/2019-141-RS/BD400-04 (BD-22)
 PROJECT: RWIS/ITD/Projects/2019/2019-141-RS/BD400-04 (BD-22)
 PROJECT: RWIS/ITD/Projects/2019/2019-141-RS/BD400-04 (BD-22)
 PROJECT: RWIS/ITD/Projects/2019/2019-141-RS/BD400-04 (BD-22)

USER NAME = lababidim	DESIGNED - R. SHAH	REVISED - A. ABBAS 04-27-98
	DRAWN -	REVISED - R. BORO 01-01-07
PLOT SCALE = 100.0000' / in.	CHECKED -	REVISED - R. BORO 09-04-07
PLOT DATE = 12/26/2019	DATE - 10-25-94	REVISED - K. ENG 10-27-08

**STATE OF ILLINOIS
DEPARTMENT OF TRANSPORTATION**

**PAVEMENT PATCHING FOR
HMA SURFACED PAVEMENT**

SCALE: NONE SHEET 1 OF 1 SHEETS STA. TO STA.

F.A.U. RTE.	SECTION	COUNTY	TOTAL SHEETS	SHEET NO.
361	2019-141-R5	WILL	28	18
BD400-04 (BD-22)			CONTRACT NO. 62K15	
ILLINOIS FED. AID PROJECT				

VARIABLE - TO MEET EXISTING DIMENSIONS AND FIELD CONDITIONS (SEE NOTE 2)

PROP. CONC. CURB OR CURB AND GUTTER REPLACEMENT IN ACCORDANCE WITH STATE STANDARD 606001. (SEE NOTE 2)

SAW CUT FULL DEPTH - INCLUDED IN THE COST OF SIDEWALK, DRIVEWAY OR MEDIAN SURFACE REMOVAL PAY ITEM.

SEE STATE STANDARD 606001

18" (450) MAX.

EXISTING OR PROPOSED HMA SURFACE (IF APPLICABLE)

¼" (5) **

EXISTING SIDEWALK, DRIVEWAY, MEDIAN SURFACE, SOD OR GROUND.

PROPOSED SIDEWALK, DRIVEWAY PAVEMENT, MEDIAN SURFACE OR SODDING SALT TOLERANT WITH TOP SOIL, 4" (100) SOD RESTORATION (SEE NOTE 1).

EXISTING CONCRETE PAVEMENT, CONCRETE BASE COURSE OR FLEXIBLE PAVEMENT

3" (75) MIN.

SUITABLE BACKFILL MATERIAL (INCLUDED IN THE COST OF CURB OR CURB AND GUTTER REMOVAL AND REPLACEMENT)

PROPOSED ¾" (20) PREFORMED EXPANSION JOINT AT CONCRETE SIDEWALKS, DRIVEWAYS, AND MEDIANS. (INCLUDED IN THE COST OF CURB OR CURB AND GUTTER REMOVAL AND REPLACEMENT.)

* 3" (75) MINIMUM FROM TOP AND BOTTOM OF THE CONCRETE PAVEMENT OR BASE COURSE.

** IF THE FINAL SURFACE OF THE PAVEMENT IS CONCRETE, THE GUTTER IS TO BE FLUSH WITH THE PAVEMENT.

UNSUITABLE SUB-BASE MATERIAL TO BE REMOVED, IF DIRECTED BY THE ENGINEER, SHALL BE REPLACED WITH EITHER SUB-BASE GRANULAR MATERIAL, TYPE B OR ADDITIONAL THICKNESS OF CONCRETE.

REMOVAL AND REPLACEMENT 4" (100) OR LESS IS INCLUDED IN THE COST OF CURB OR CURB AND GUTTER REMOVAL AND REPLACEMENT.

REMOVAL AND REPLACEMENT IN EXCESS OF 4" (100) WILL BE PAID FOR IN ACCORDANCE WITH ARTICLE 109.04 OF THE STANDARD SPECIFICATIONS.

PROPOSED #6 (20) EPOXY COATED TIE BARS 24" (600) LONG AT 24" (600) CENTERS WILL NOT BE PAID FOR SEPARATELY. DELETE EPOXY COATED TIE BARS IF EXISTING TIE BARS ARE USUABLE AS DETERMINED BY THE ENGINEER. (SEE NOTE 3).

NOTE:

- SIDEWALK, DRIVEWAY PAVEMENT OR MEDIAN SURFACE SHALL BE SIMILAR TO THE MATERIAL BEING REMOVED AND WILL BE PAID FOR SEPARATELY.
SODDING, SALT TOLERANT AND TOP SOIL, FURNISH AND PLACE 4" WILL BE PAID FOR SEPARATELY.
- FERTILIZER FOR THE PLACEMENT OF THE SOD IS NOT REQUIRED.
- CURB OR CURB AND GUTTER REPLACEMENT SHALL MATCH THE SHAPE OF THE EXISTING CURB OR CURB AND GUTTER UNLESS OTHERWISE SPECIFIED.
- FOR CURB OR CURB AND GUTTER REMOVAL AND REPLACEMENT ADJACENT TO FLEXIBLE PAVEMENT DELETE EPOXY COATED TIE BARS.
- LONGITUDINAL BARS, IF ENCOUNTERED IN THE EXISTING CURB OR CURB AND GUTTER, ARE NOT TO BE REPLACED. CUTTING AND REMOVING LONGITUDINAL BARS SHALL BE INCLUDED IN THE COST OF CURB OR CURB AND GUTTER REMOVAL AND REPLACEMENT.
- THE COST OF HMA SURFACE REMOVAL IN THE EXISTING GUTTER FLAG SHALL BE INCLUDED IN THE COST OF THE CURB AND GUTTER REMOVAL AND REPLACEMENT.
- THE REMOVAL AND REPLACEMENT OF THE EXISTING CURB OR CURB AND GUTTER SHALL BE DONE IN ACCORDANCE WITH THE APPLICABLE PORTIONS OF SECTION 440 AND 606 OF THE STANDARD SPECIFICATIONS.
- THE LOCATIONS OF REMOVAL AND REPLACEMENT OF EXISTING CURB OR CURB AND GUTTER SHALL BE DETERMINED BY THE RESIDENT ENGINEER AT THE TIME OF CONSTRUCTION.

BASIS OF PAYMENT

THIS WORK WILL BE PAID FOR AT THE CONTRACT UNIT PRICE PER FOOT (METER) FOR "CURB REMOVAL AND REPLACEMENT" OR "COMBINATION CONCRETE CURB AND GUTTER REMOVAL AND REPLACEMENT".

CURB OR CURB AND GUTTER REMOVAL AND REPLACEMENT

ALL DIMENSIONS ARE IN INCHES (MILLIMETERS) UNLESS OTHERWISE SHOWN.

MODEL: Default
FILE: \\hpc\p\pub\hpc\com\dot\illinois\gov\p\pub\dot\Documents\DOT_Offices\District_1\Projects\122220\Cadd\Drawings\Design\DES454.dgn

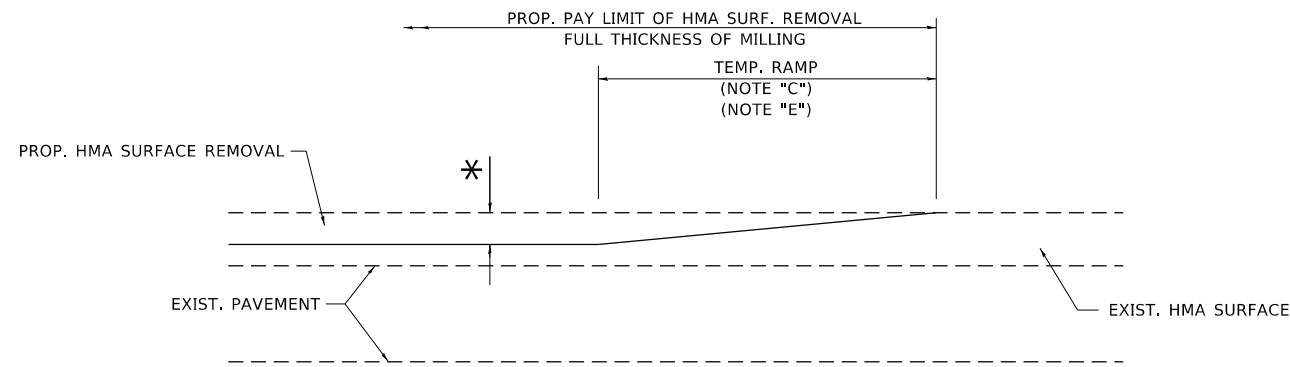
USER NAME = lababidim	DESIGNED - A. HOUSEH	REVISED - R. SHAH 10-03-96
	DRAWN -	REVISED - A. ABBAS 03-21-97
PLOT SCALE = 100.0000' / in.	CHECKED -	REVISED - M. GOMEZ 01-22-01
PLOT DATE = 12/26/2019	DATE - 03-11-94	REVISED - R. BORO 12-15-09

STATE OF ILLINOIS
DEPARTMENT OF TRANSPORTATION

CURB OR CURB AND GUTTER
REMOVAL AND REPLACEMENT

SCALE: NONE SHEET 1 OF 1 SHEETS STA. TO STA.

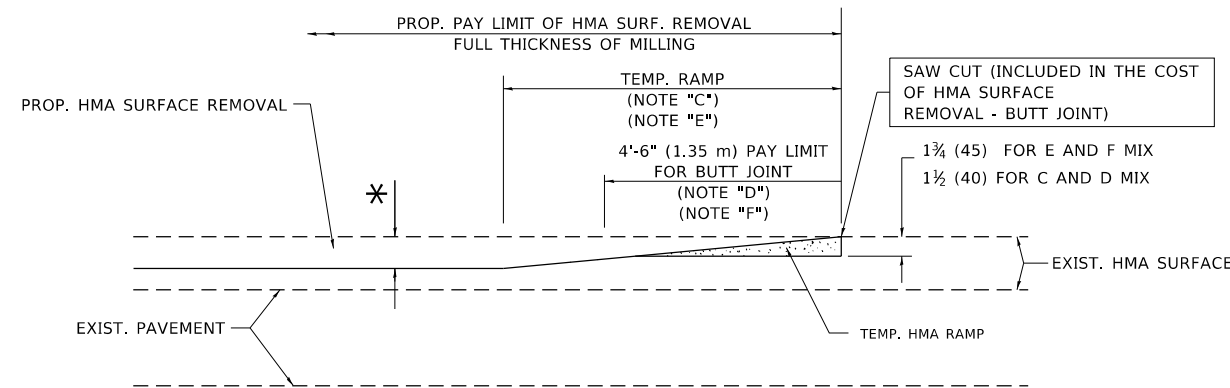
F.A.U RTE.	SECTION	COUNTY	TOTAL SHEETS	SHEET NO.
361	2019-141-R5	WILL	28	19
BD600-06 (BD-24)		CONTRACT NO. 62K15		
ILLINOIS FED. AID PROJECT				



MILLED TEMPORARY RAMP

(FOR BUTT JOINT AND HMA TAPER SEE DETAIL BELOW)

OPTION 1

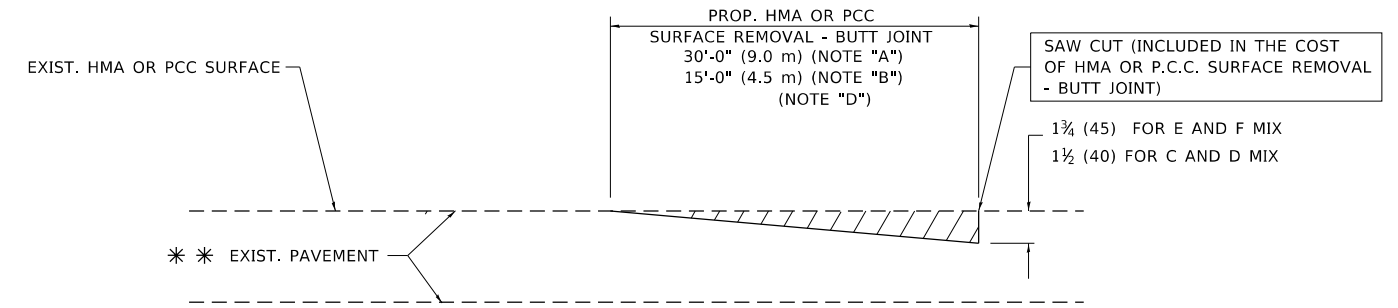


HMA CONSTRUCTED TEMPORARY RAMP

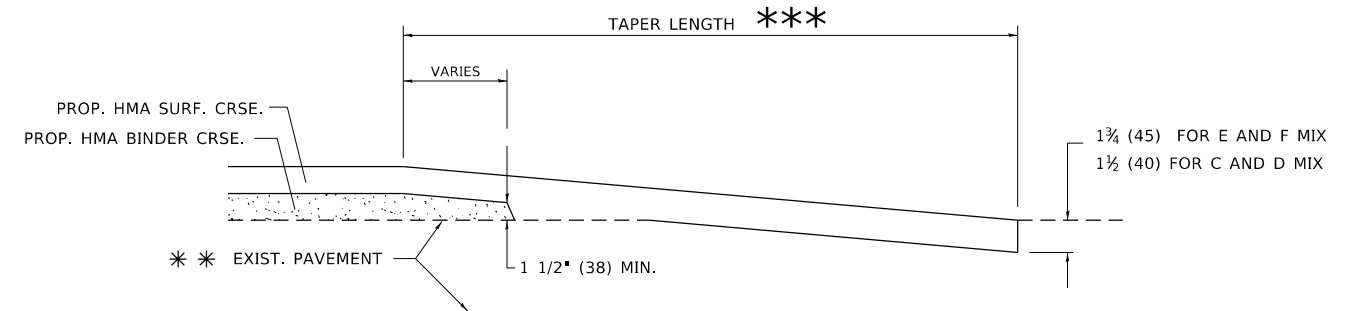
(FOR BUTT JOINT AND HMA TAPER SEE DETAIL BELOW)

OPTION 2

TYPICAL TEMPORARY RAMP



BUTT JOINT DETAIL



HMA TAPER DETAIL

TYPICAL BUTT JOINT AND HMA TAPER FOR RESURFACING ONLY

*** PC CONCRETE, HMA OR HMA RESURFACED PAVEMENT.

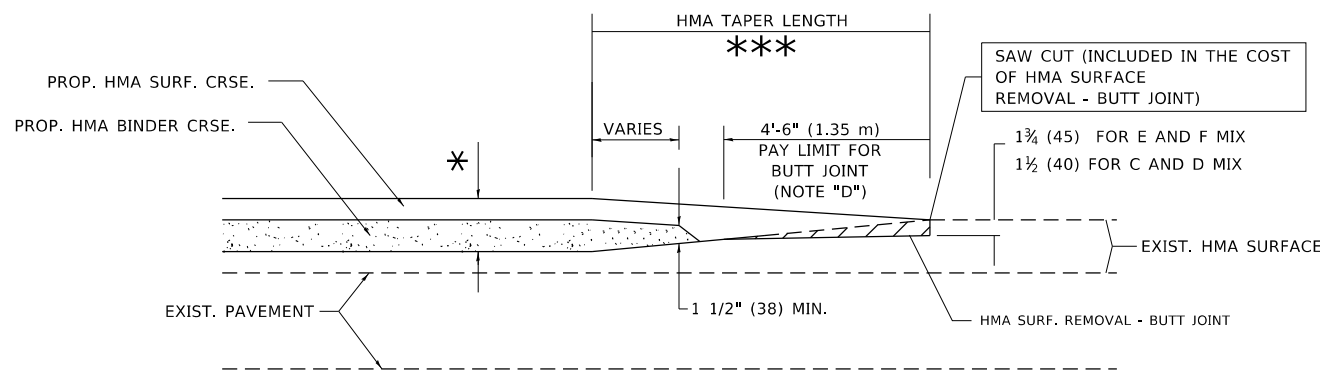
NOTES

- A. MAINLINE ROADWAYS AND MAJOR SIDE ROADS.
- B. MINOR SIDE ROADS.
- C. THE TEMP. RAMP SHALL BE CONSTRUCTED IMMEDIATELY UPON REMOVAL OF THE EXISTING HMA SURFACE.
- D. THE BUTT JOINT SHALL BE CONSTRUCTED IMMEDIATELY PRIOR TO PLACING THE PROPOSED HMA COURSES.
- E. TAPER THE TEMP. RAMP AT A RATE OF 3'-0" (900 mm) PER 1 INCH (25 mm) OF MILLING THICKNESS.
- F. INSTALLATION AND REMOVAL OF THE 4'-6" (1.35 m) TEMP. RAMP IS INCLUDED IN COST OF HMA SURFACE REMOVAL - BUTT JOINT.
* SEE TYPICAL SECTIONS FOR MILLING THICKNESS.
- G. SEE ARTICLE 406.08 AND 406.14 OF THE STANDARD SPECIFICATIONS FOR "HMA AND/OR PCC SURFACE REMOVAL, BUTT JOINT".
*** 20'-0" (6.1 m) PER 1 (25) RESURFACING (NOTE "A")
10'-0" (3.0 m) PER 1 (25) RESURFACING (NOTE "B")

BASIS OF PAYMENT

THE BUTT JOINT WILL BE PAID FOR AT THE CONTRACT UNIT PRICE PER SQUARE YARD (SQUARE METER) FOR "HOT-MIX ASPHALT SURFACE REMOVAL - BUTT JOINT" OR FOR "PORTLAND CEMENT CONCRETE SURFACE REMOVAL - BUTT JOINT".

ALL DIMENSIONS ARE IN INCHES (MILLIMETERS) UNLESS OTHERWISE SHOWN.



BUTT JOINT AND HMA TAPER

TYPICAL BUTT JOINT AND HMA TAPER FOR MILLING AND RESURFACING

STATE OF ILLINOIS
DEPARTMENT OF TRANSPORTATION

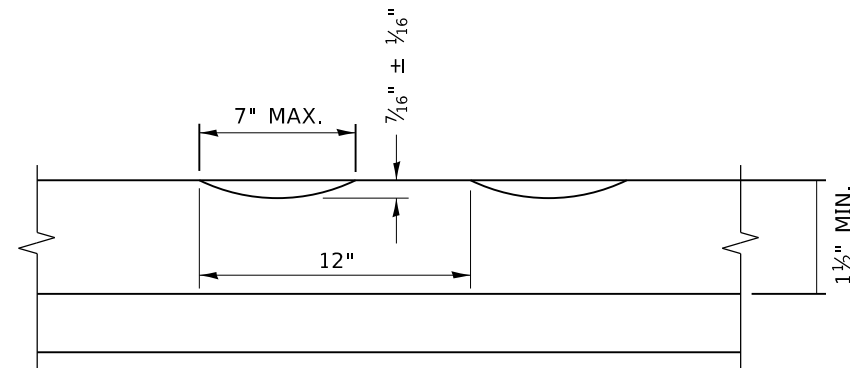
BUTT JOINT AND
HMA TAPER DETAILS

SCALE: NONE SHEET 1 OF 1 SHEETS STA. TO STA.

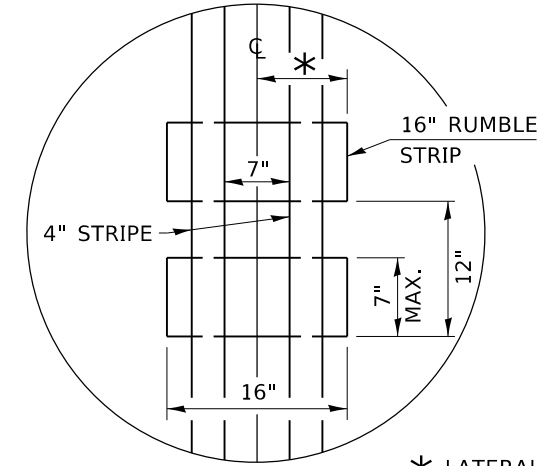
F.A.U. RTE.	SECTION	COUNTY	TOTAL SHEETS	SHEET NO.
361	2019-141-R5	WILL	28	20
BD400-05 BD32		CONTRACT NO. 62K15		
ILLINOIS FED. AID PROJECT				

MODEL: Default
FILE: \\hpc1\pub\hpc\room\dat\illinois\pcc\pww\DOT\Documents\IBDOT_Offices\Bartlett_1\Projects\2019\2019-CAD\Bartlett\Design\BIS\4.dgn

USER NAME = lababidim	DESIGNED - M. DE YONG	REVISED - R. SHAH 10-25-94
PLOT SCALE = 100.0000' / in.	DRAWN -	REVISED - A. ABBAS 03-21-97
PLOT DATE = 12/26/2019	CHECKED -	REVISED - M. GOMEZ 04-06-01
	DATE - 06-13-90	REVISED - R.BORO 01-01-07



SECTION A-A



* LATERAL DEVIATION SHALL NOT EXCEED ONE INCH IN 100 FEET.

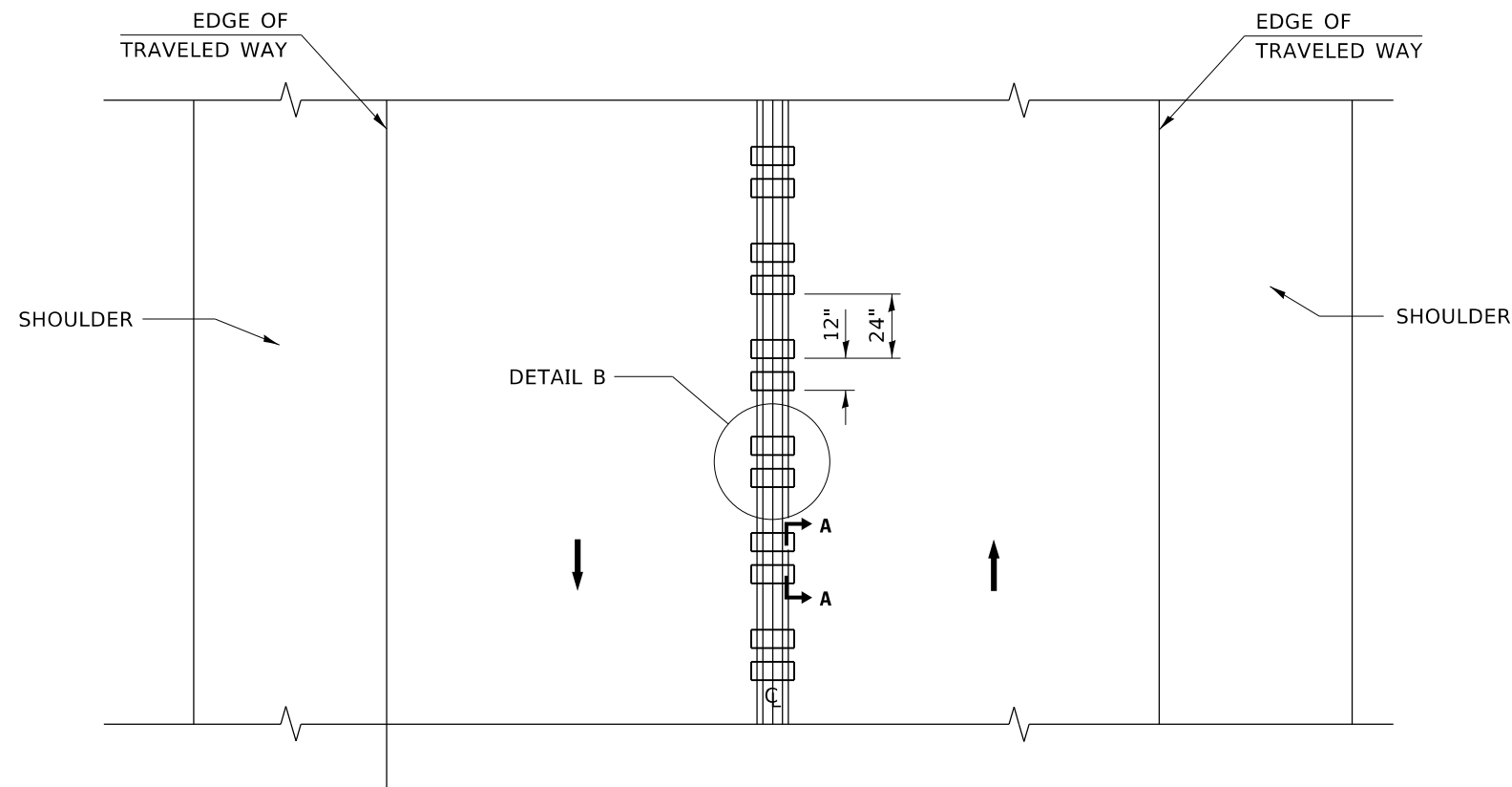
DETAIL B

GENERAL NOTES

- CENTERLINE RUMBLE STRIPS SHALL BE CONSTRUCTED ACCORDING TO SECTION 642 ALONG THE CENTERLINE OF PAVEMENT.
- SEE STANDARD 780001 FOR OTHER STRIPING LAYOUTS.
- RUMBLE STRIPS SHALL NOT BE PLACED ON BRIDGES.
- ALL RUMBLE STRIPS SHALL BE MILLED.
- CENTERLINE RUMBLE STRIPS SHALL BE CONTINUOUS THROUGH CONNECTIONS OF SIDEROADS WITH NO LEFT TURN LANES.
- DISCONTINUE CENTERLINE RUMBLE STRIPS THROUGH THE LIMITS OF ALL LEFT TURN LANES, INCLUDING ANY LANE TAPER SECTIONS.
- AFTER RUMBLE STRIPS ARE INSTALLED, THE PAVEMENT SURFACE SHALL BE SWEEPED CLEAN PRIOR TO THE PLACEMENT OF THE NEW PAVEMENT MARKINGS.
- WHERE USED, ADJUST SPACING OF RAISED REFLECTIVE PAVEMENT MARKERS TO FALL IN WIDER GAP BETWEEN RUMBLE STRIPS.

BASIS OF PAYMENT

- THIS WORK WILL BE PAID FOR AT THE CONTRACT UNIT PRICE PER FOOT FOR CENTERLINE-RUMBLE STRIP OF THE WIDTH SPECIFIED.
- HOT-SPRAY THERMOPLASTIC PAVEMENT MARKING WILL BE USED OVER THE RUMBLE STRIPS, AND WILL BE PAID FOR SEPARATELY.



TWO-WAY ROAD

MODEL: Default
FILE: h:\mhc\p\pub\haronom.dwg\illinois.gov\PIWDOT\Documents\DOT_Offices\District_1\Projects\122220\CaddData\Design\DESIGN.dwg

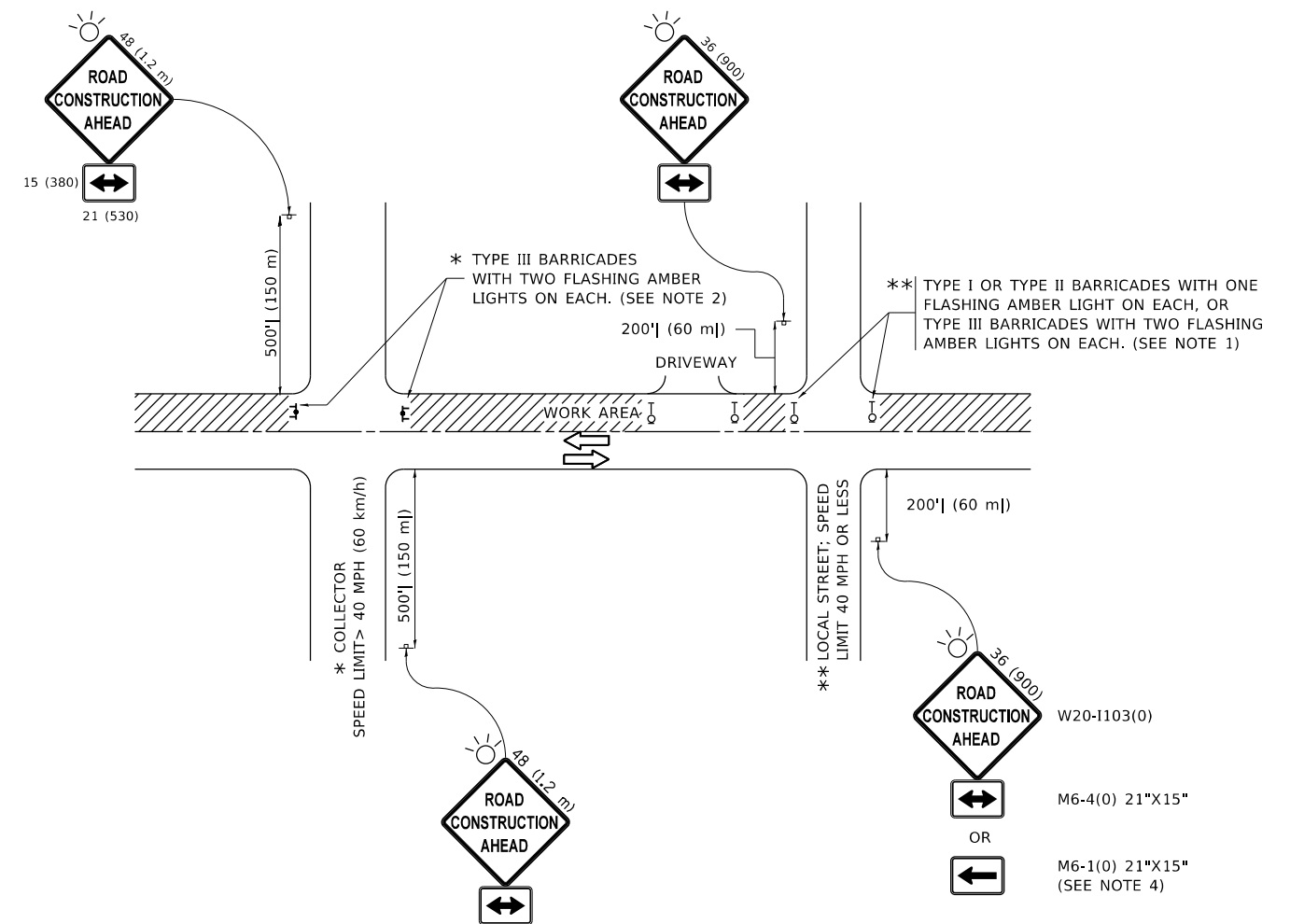
USER NAME = lababidim	DESIGNED - R. BORO	REVISED -
	DRAWN -	REVISED -
PLOT SCALE = 100.0000' / in.	CHECKED -	REVISED -
PLOT DATE = 12/26/2019	DATE - 08-06-2012	REVISED -

**STATE OF ILLINOIS
DEPARTMENT OF TRANSPORTATION**

RUMBLE STRIPS FOR CENTERLINE, NON-FREEWAY

SCALE: NONE SHEET 1 OF 1 SHEETS STA. TO STA.

F.A.U RTE.	SECTION	COUNTY	TOTAL SHEETS	SHEET NO.
361	2019-141-R5	WILL	28	21
BD 55			CONTRACT NO. 62K15	
ILLINOIS FED. AID PROJECT				



NOTES:

1. SIDE ROAD WITH A SPEED LIMIT OF 40 MPH (60 km/h) OR LESS AS SHOWN ON THE DRAWING AND AS DIRECTED BY THE ENGINEER:
 - a) ONE "ROAD CONSTRUCTION AHEAD" SIGN 36 x 36 (900x900) WITH A FLASHER MOUNTED ON IT APPROXIMATELY 200' (60 m) IN ADVANCE OF THE MAIN ROUTE.
 - b) THE CLOSED PORTION OF THE MAIN ROUTE SHALL BE PROTECTED BY BLOCKING WITH TYPE I, TYPE II OR TYPE III BARRICADES, 1/3 OF THE CROSS SECTION OF THE CLOSED PORTION.
2. SIDE ROAD WITH A SPEED LIMIT GREATER THAN 40 MPH (60 km/h) AS SHOWN ON THE DRAWING AND AS DIRECTED BY THE ENGINEER:
 - a) ONE "ROAD CONSTRUCTION AHEAD" SIGN 48 x 48 (1.2 m x 1.2 m) WITH A FLASHER MOUNTED ON IT APPROXIMATELY 500' (150 m) IN ADVANCE OF THE MAIN ROUTE.
 - b) THE CLOSED PORTION OF THE MAIN ROUTE SHALL BE PROTECTED BY BLOCKING WITH TYPE III BARRICADES, 1/2 OF THE CROSS SECTION OF THE CLOSED PORTION.
3. CONES MAY BE SUBSTITUTED FOR BARRICADES OR DRUMS AT HALF THE SPACING DURING DAY OPERATIONS. CONES SHALL BE A MINIMUM OF 28 (710) IN HEIGHT.
4. SIGNING AND THE WORK ZONE, A SINGLE HEADED ARROW (M6-1) SHALL BE USED IN LIEU OF THE DOUBLE HEADED ARROW (M6-4).
5. WHEN WORK IS BEING PERFORMED ON A SIDE ROAD OR DRIVEWAY, FOLLOW THE APPLICABLE STANDARD(S). THE DIRECTIONAL ARROW (M6-1 OR M6-4) SHALL BE COVERED OR REMOVED WHEN NO LONGER CONSISTENT WITH THE TRAFFIC CONTROL SET-UP.
6. ADVANCE WARNING SIGNS ARE TO BE OMITTED ON DRIVEWAYS UNLESS OTHERWISE SPECIFIED IN THE PLANS OR BY THE ENGINEER.
7. THE TRAFFIC CONTROL AND PROTECTION FOR SIDE ROADS, INTERSECTIONS, AND DRIVEWAYS SHALL BE INCLUDED IN THE COST OF SPECIFIED TRAFFIC CONTROL STANDARDS OR ITEMS.

All dimensions are in inches (millimeters) unless otherwise shown.

MODEL: Default
 FILE: \\nas01c.psu.edu\pub\lancorn\data\illinois.gov\PWIDOT\Documents\DOT_Offices\Director_1\Projects\129220\CADD\Drawings\Design\DESIGN.dgn

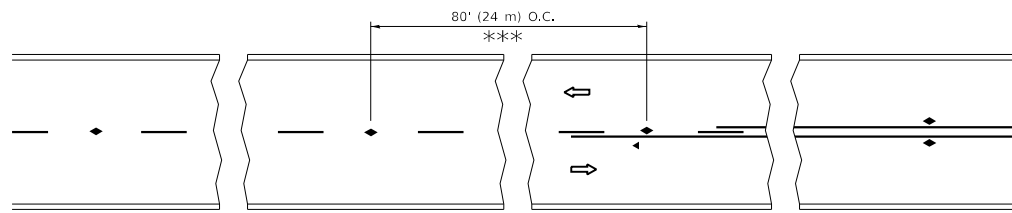
USER NAME = lababidim	DESIGNED - L.H.A.	REVISED - A. HOUSEH 10-15-96
	DRAWN -	REVISED - T. RAMMACHER 01-06-00
PLOT SCALE = 100.0000' / in.	CHECKED -	REVISED - A. SCHUETZE 07-01-13
PLOT DATE = 12/26/2019	DATE - 06-89	REVISED - A. SCHUETZE 09-15-16

**STATE OF ILLINOIS
DEPARTMENT OF TRANSPORTATION**

**TRAFFIC CONTROL AND PROTECTION FOR
SIDE ROADS, INTERSECTIONS, AND DRIVEWAYS**

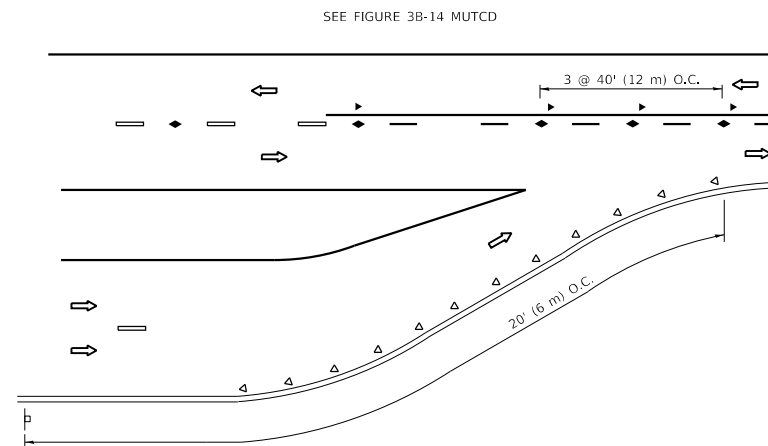
SCALE: NONE SHEET 1 OF 1 SHEETS STA. TO STA.

F.A.U. RTE.	SECTION	COUNTY	TOTAL SHEETS	SHEET NO.
361	2019-141-R5	WILL	28	22
TC-10			CONTRACT NO. 62K15	
ILLINOIS FED. AID PROJECT				

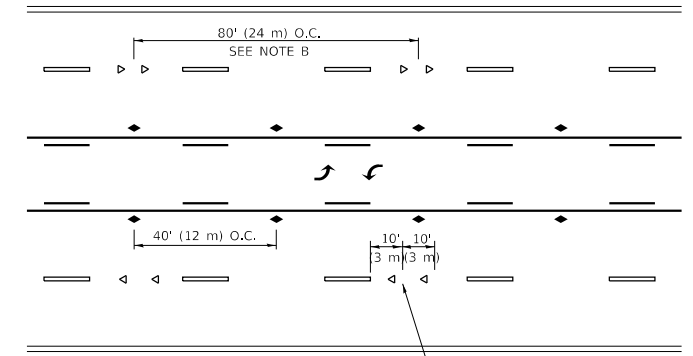


*** REDUCE TO 40' (12 m) O.C. ON CURVES WITH POSTED OR ADVISORY SPEED 45 M.P.H. (70 km/h) OR LESS.

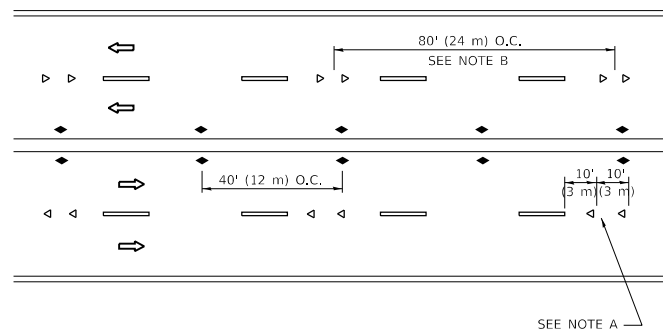
TWO-LANE/TWO-WAY



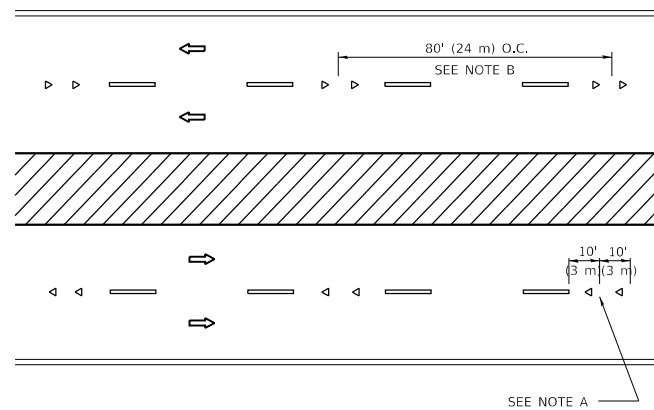
LANE REDUCTION TRANSITION



TWO-WAY LEFT TURN



MULTI-LANE/UNDIVIDED



MULTI-LANE/DIVIDED

GENERAL NOTES

1. MARKERS USED WITH DASHED LINES SHALL BE CENTERED IN THE GAP BETWEEN SEGMENTS.
2. MARKERS USED ADJACENT TO SOLID LINES SHALL BE OFFSET 2 TO 3 (50 TO 75) TOWARD TRAFFIC AS SHOWN.
3. MARKERS THROUGH TANGENTS LESS THAN 500' (150 m) IN LENGTH BETWEEN CURVES SHALL BE INSTALLED AT THE LESSER OF THE TWO CURVE SPACINGS.
4. MARKERS ARE TO BE USED ADJACENT TO BOTH SOLID WHITE LINES IN DUAL LEFT TURN LANES

SYMBOLS

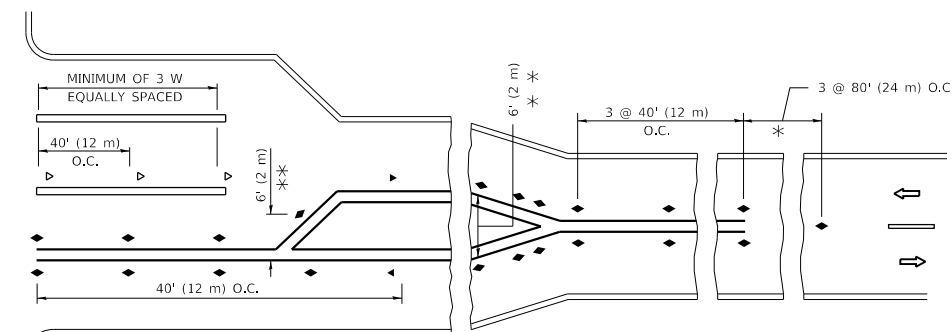
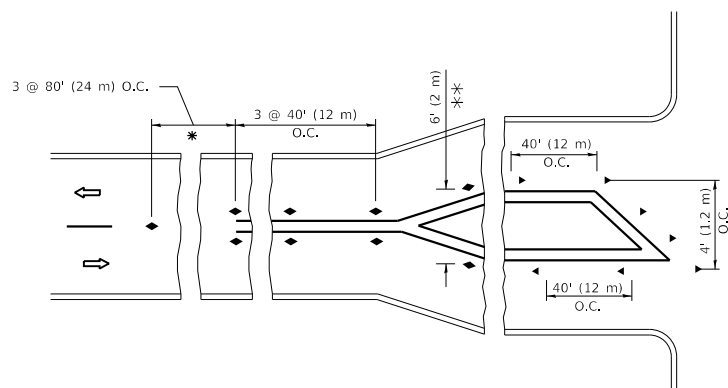
- YELLOW STRIPE
- WHITE STRIPE
- ◀ ONE-WAY AMBER MARKER
- ◀ ONE-WAY CRYSTAL MARKER (W/O)
- ◆ TWO-WAY AMBER MARKER

LANE MARKER NOTES

- A. USE DOUBLE LANE LINE MARKERS SPACED AS SHOWN.
- B. REDUCE TO 40' (12 m) O.C. ON CURVES WHERE ADVISORY SPEEDS ARE 10 M.P.H. (20 km/h) LOWER THAN POSTED SPEEDS.

DESIGN NOTES

1. DOUBLE LANE LINE MARKERS SHALL BE USED UNLESS SPECIFIED OTHERWISE.
2. EXCEPT AS SHOWN ON THE LANE REDUCTION TRANSITION AND FREEWAY EXIT RAMP DETAIL, MARKERS ARE NOT TO BE SPECIFIED ON RIGHT EDGE LINES.
3. THE EXACT MARKER LIMITS, SPACING, AND COLOR SHALL BE INCLUDED IN THE PLANS WHEN STANDARD SPECIFICATIONS ARE NOT BEING USED.
4. MARKERS SHOULD NOT BE USED ALONGSIDE CURBS EXCEPT FOR EXTREMELY SHORT SECTIONS OF CURBS WHERE NOT MORE THAN TWO MARKERS WOULD BE INVOLVED.



* SEE TWO-LANE/TWO-WAY WHERE MARKERS CONTINUE
 ** WHERE THE MEDIAN WIDTH IS 6' (2 m) OR LESS USE TWO-WAY MARKERS.

TURN LANES

All dimensions are in inches (millimeters) unless otherwise shown.

MODEL: Default
 FILE: h:\arc\p\pub\arcroom.d\at\illinois.gov\PI\DOT\Documents\DOT_Offices\Director_1\Projects\129220\CADD\Design\Design\DESIGN.dgn

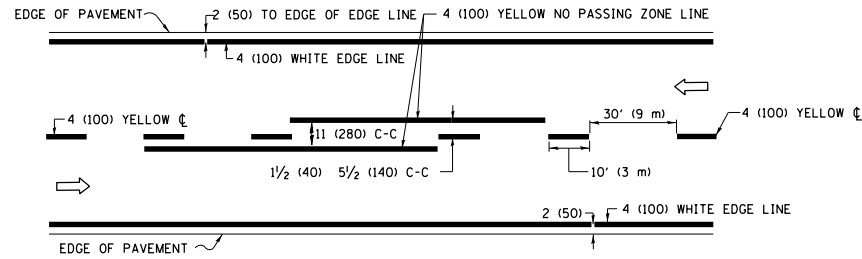
USER NAME = lababidim	DESIGNED -	REVISED - T. RAMMACHER 03-12-99
	DRAWN -	REVISED - T. RAMMACHER 01-06-00
PLOT SCALE = 100.0000 ' / in.	CHECKED -	REVISED - C. JUCIUS 09-09-09
PLOT DATE = 12/26/2019	DATE -	REVISED - C. JUCIUS 07-01-13

**STATE OF ILLINOIS
 DEPARTMENT OF TRANSPORTATION**

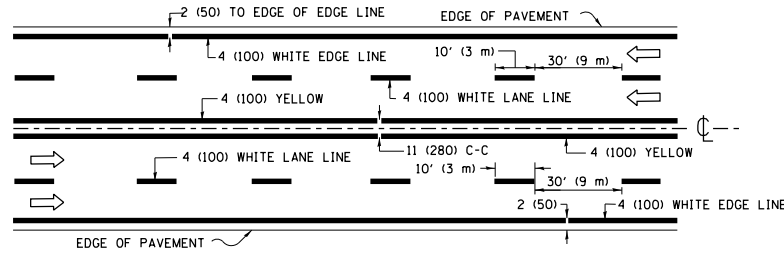
**TYPICAL APPLICATIONS
 RAISED REFLECTIVE PAVEMENT MARKERS (SNOW-PLOW RESISTANT)**

SCALE: NONE SHEET 1 OF 1 SHEETS STA. TO STA.

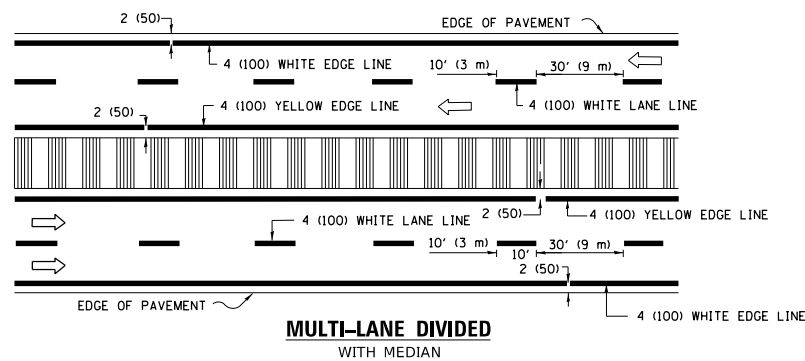
F.A.U RTE.	SECTION	COUNTY	TOTAL SHEETS	SHEET NO.
361	2019-141-R5	WILL	28	23
TC-11		CONTRACT NO. 62K15		
ILLINOIS		FED. AID PROJECT		



2-LANE ROADWAY

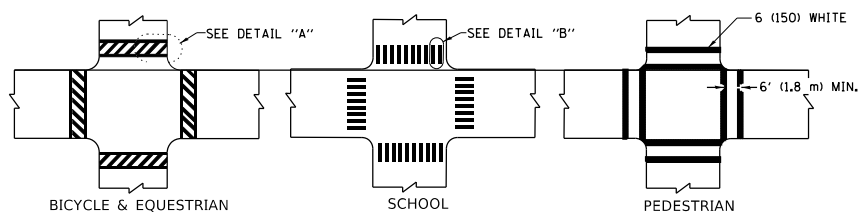


MULTI-LANE UNDIVIDED



MULTI-LANE DIVIDED WITH MEDIAN

TYPICAL LANE AND EDGE LINE MARKING

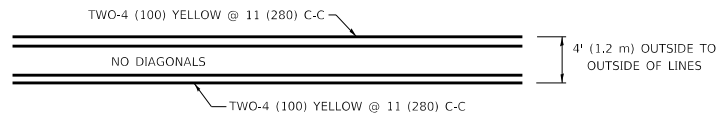


DETAIL "A"

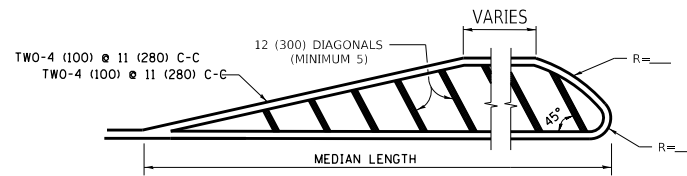
DETAIL "B"

TYPICAL CROSSWALK MARKING

* MARKINGS SHALL BE INSTALLED PARALLEL TO THE CENTERLINE OF THE ROAD WHICH IT CROSSES



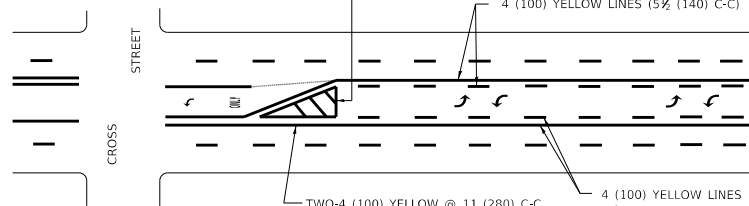
4' (1.2 m) WIDE MEDIANS ONLY



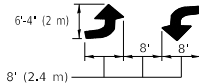
FOR MEDIAN LENGTHS WHERE DIAGONAL SPACING CANNOT BE ATTAINED, USE 5 (FIVE) EQUALLY SPACED DIAGONAL LINES.

DIAGONAL LINE SPACING: 50' (15 m) C-C (LESS THAN 30MPH (50 km/h)) 75' (25 m) C-C 30MPH (50 km/h) TO 45MPH (70 km/h) 150' (45 m) C-C (MORE THAN 45MPH (70 km/h))

MEDIANS OVER 4' (1.2 m) WIDE

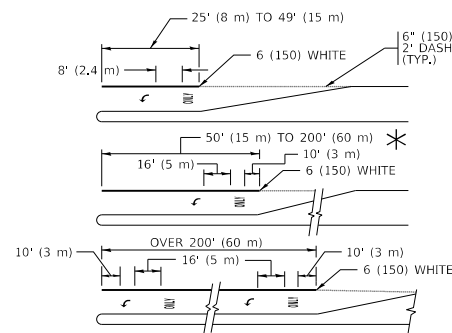


TYPICAL PAINTED MEDIAN MARKING



MEDIAN WITH TWO-WAY LEFT TURN LANE

TYPICAL PAINTED MEDIAN MARKING

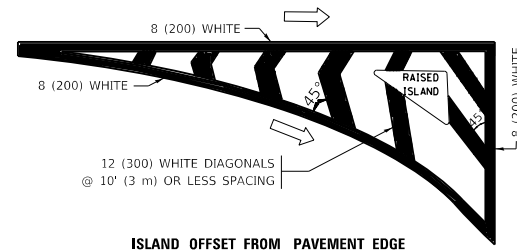


FULL SIZE LETTERS 8' (2.4 m) AND ARROWS SHALL BE USED. AREA = 15.6 SQ. FT. (1.5 m²) ONLY AREA = 20.8 SQ. FT. (1.9 m²)

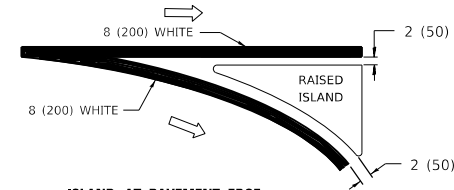
* TURN LANES IN EXCESS OF 400' (120 m) IN LENGTH MAY HAVE AN ADDITIONAL SET OF ARROW - "ONLY" INSTALLED MIDWAY BETWEEN THE OTHER TWO SETS OF ARROW - "ONLY".

TYPICAL LEFT (OR RIGHT) TURN LANE

TYPICAL TURN LANE MARKING

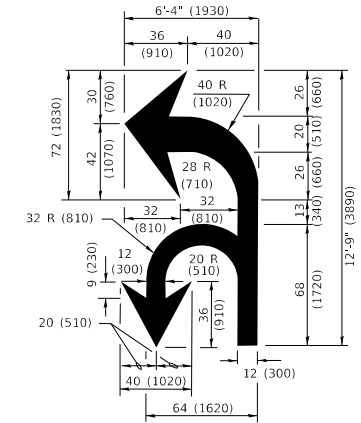


ISLAND OFFSET FROM PAVEMENT EDGE

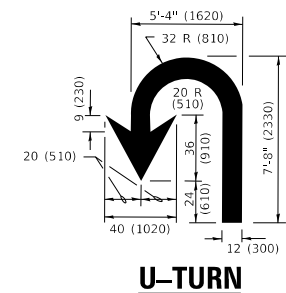


ISLAND AT PAVEMENT EDGE

TYPICAL ISLAND MARKING



COMBINATION LEFT AND U-TURN



U-TURN

LANE REDUCTION TRANSITION
* LANE REDUCTION ARROWS REQUIRED AT SPEEDS OF 45 MPH OR GREATER OR WHEN SPECIFIED IN PLANS.

D(FT)	SPEED LIMIT
345	30
425	35
500	40
580	45
665	50
750	55

TYPE OF MARKING	WIDTH OF LINE	PATTERN	COLOR	SPACING / REMARKS
CENTERLINE ON 2 LANE PAVEMENT	4 (100)	SKIP-DASH	YELLOW	10' (3 m) LINE WITH 30' (9 m) SPACE
CENTERLINE ON MULTI-LANE UNDIVIDED PAVEMENT	2 @ 4 (100)	SOLID	YELLOW	11 (280) C-C
NO PASSING ZONE LINES: FOR ONE DIRECTION FOR BOTH DIRECTIONS	4 (100) 2 @ 4 (100)	SOLID SOLID	YELLOW YELLOW	5 1/2 (140) C-C FROM SKIP-DASH CENTERLINE 11 (280) C-C OMIT SKIP-DASH CENTERLINE BETWEEN
LANE LINES	4 (100) 5 (125) ON FREEWAYS	SKIP-DASH SKIP-DASH	WHITE WHITE	10' (3 m) LINE WITH 30' (9 m) SPACE
DOTTED LINES (EXTENSIONS OF CENTER, LANE OR TURN LANE MARKINGS)	SAME AS LINE BEING EXTENDED	SKIP-DASH	SAME AS LINE BEING EXTENDED	2' (600) LINE WITH 6' (1.8 m) SPACE
EDGE LINES	4 (100)	SOLID	YELLOW-LEFT WHITE-RIGHT	OUTLINE MEDIANS IN YELLOW
TURN LANE MARKINGS	6 (150) LINE; FULL SIZE LETTERS & SYMBOLS (8' (2.4m))	SOLID	WHITE	SEE TYPICAL TURN LANE MARKING DETAIL
TWO WAY LEFT TURN MARKING	2 @ 4 (100) EACH DIRECTION 8' (2.4m) LEFT ARROW	SKIP-DASH AND SOLID IN PAIRS	YELLOW WHITE	10' (3 m) LINE WITH 30' (9 m) SPACE FOR SKIP-DASH; 5 1/2 (140) C-C BETWEEN SOLID LINE AND SKIP-DASH LINE SEE TYPICAL TWO-WAY LEFT TURN MARKING DETAIL
CROSSWALK LINES (PEDESTRIAN) A. DIAGONALS (BIKE & EQUESTRIAN) B. LONGITUDINAL BARS (SCHOOL)	2 @ 6 (150) 12 (300) @ 45° 12 (300) @ 90°	SOLID SOLID SOLID	WHITE WHITE WHITE	NOT LESS THAN 6' (1.8 m) APART 2' (600) APART SEE TYPICAL CROSSWALK MARKING DETAILS.
STOP LINES	24 (600)	SOLID	WHITE	PLACE 4' (1.2 m) IN ADVANCE OF AND PARALLEL TO CROSSWALK, IF PRESENT, OTHERWISE, PLACE AT DESIRED STOPPING POINT, PARALLEL TO CROSSROAD CENTERLINE, WHERE POSSIBLE
PAINTED MEDIANS	2 @ 4 (100) WITH 12 (300) DIAGONALS @ 45° NO DIAGONALS USED FOR 4' (1.2 m) WIDE MEDIANS	SOLID	YELLOW: TWO WAY TRAFFIC WHITE: ONE WAY TRAFFIC	11 (280) C-C FOR THE DOUBLE LINE SEE TYPICAL PAINTED MEDIAN MARKING.
GORE MARKING AND CHANNELIZING LINES	8 (200) WITH 12 (300) DIAGONALS @ 45°	SOLID	WHITE	DIAGONALS: 15' (4.5 m) C-C (LESS THAN 30MPH (50 km/h)) 20' (6 m) C-C 30MPH (50 km/h) TO 45MPH (70 km/h) 30' (9 m) C-C (OVER 45MPH (70 km/h))
RAILROAD CROSSING	24 (600) TRANSVERSE LINES "RR" IS 6' (1.8 m) LETTERS: 16 (400) LINE FOR "X"	SOLID	WHITE	SEE STATE STANDARD 780001 AREA OF: "R"=3.6 SQ. FT. (0.33 m ²) EACH "X"=54.0 SQ. FT. (5.0 m ²)
SHOULDER DIAGONALS (REQUIRED FOR SHOULDERS > 8')	12 (300) @ 45°	SOLID	WHITE - RIGHT YELLOW - LEFT	50' (15 m) C-C (LESS THAN 30MPH (50 km/h)) 75' (25 m) C-C (30 MPH (50 km/h) TO 45MPH (70 km/h)) 150' (45 m) C-C (OVER 45MPH (70 km/h))
U TURN ARROW	SEE DETAIL	SOLID	WHITE	16.3 SF
2 ARROW COMBINATION LEFT AND U TURN	SEE DETAIL	SOLID	WHITE	30.4 SF

FOR FURTHER DETAILS ON PAVEMENT MARKING REFER TO STANDARD SPECIFICATIONS FOR ROAD AND BRIDGE CONSTRUCTION AND STATE STANDARD 780001.

All dimensions are in inches (millimeters) unless otherwise shown.

MODEL: Default FILE: \public\room\ad\illinois.gov\PWD\DOT\Documents\DOT\Office\lhb\det_1\Project\129220\CaddData\Design\DS\454.dgn

USER NAME = lababidi	DESIGNED - EVERS	REVISED - C. JUCIUS 09-09-09
PLOT SCALE = 100.0000' / in.	CHECKED -	REVISED - C. JUCIUS 07-01-13
PLOT DATE = 12/26/2019	DATE - 03-19-90	REVISED - C. JUCIUS 12-21-15
		REVISED - C. JUCIUS 04-12-16

STATE OF ILLINOIS DEPARTMENT OF TRANSPORTATION

DISTRICT ONE TYPICAL PAVEMENT MARKINGS

SCALE: NONE	SHEET 1 OF 2 SHEETS	STA. TO STA.	F.A.U RTE.	SECTION	COUNTY	TOTAL SHEETS	SHEET NO.
			361	2019-141-R5	WILL	28	24
				TC-13			
					ILLINOIS	FED. AID PROJECT	

TURN BAY ENTRANCE AT START OF LANE CLOSURE TAPER

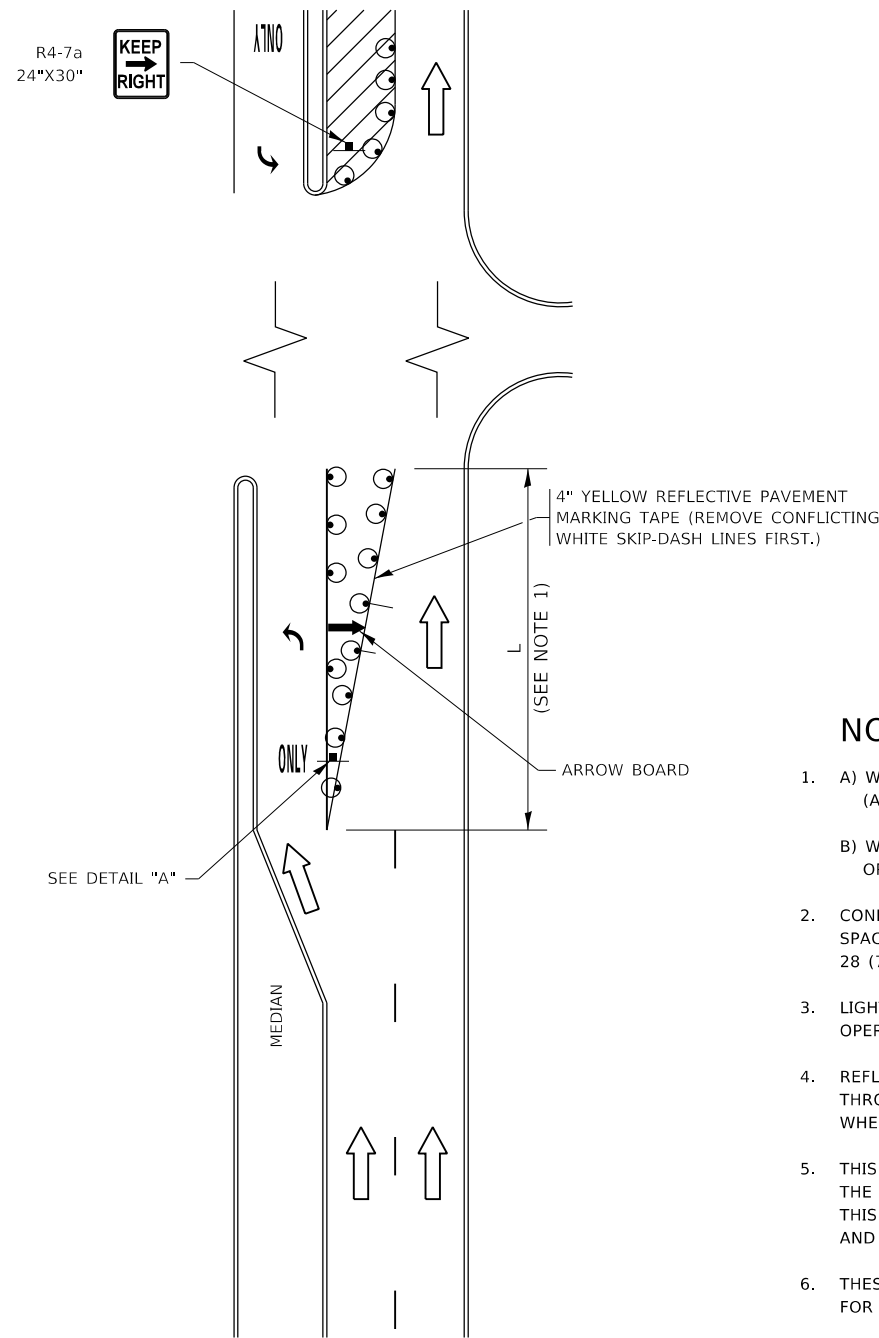


FIGURE 1

TURN BAY ENTRANCE WITHIN A LANE CLOSURE

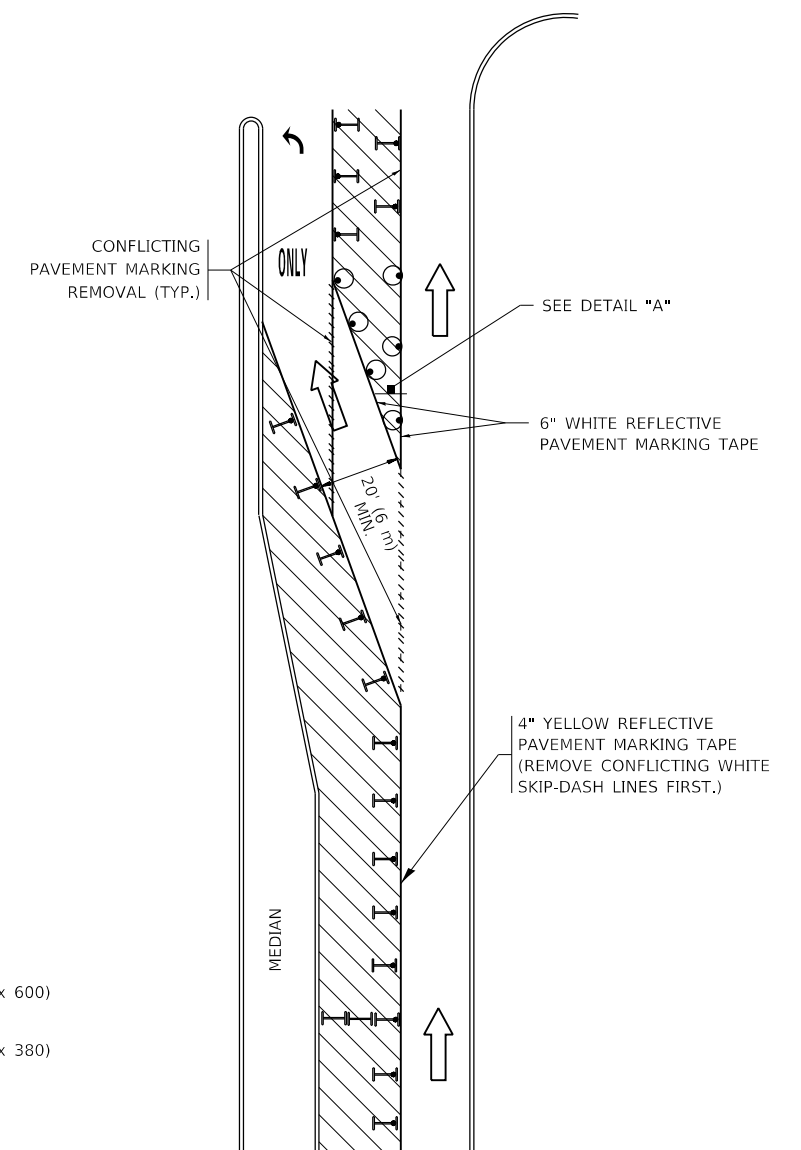


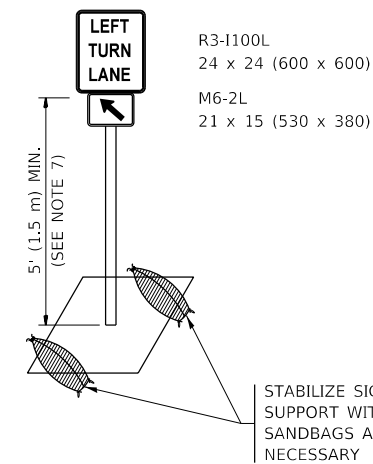
FIGURE 2

LEGEND

- WORK AREA
- LANE OPEN TO TRAFFIC
- ARROW BOARD
- TYPE I OR II BARRICADE OR DRUM WITH STEADY BURN LIGHT
- DRUM WITH STEADY BURN LIGHT
- SIGN ASSEMBLY
- TYPE I OR II CHECK BARRICADE WITH FLASHING LIGHT

NOTES:

1. A) WHEN "L" IS \leq THE STORAGE LENGTH OF THE TURN LANE (AS SHOWN IN FIG. 1), USE FIGURE 1.
B) WHEN "L" IS $>$ THE STORAGE LENGTH OF THE TURN LANE OR THE TURN LANE IS WITHIN THE LANE CLOSURE, USE FIGURE 2.
2. CONES MAY BE SUBSTITUTED FOR BARRICADES OR DRUMS AT HALF THE SPACING DURING DAY OPERATIONS. CONES SHALL BE A MINIMUM OF 28 (710) IN HEIGHT.
3. LIGHTS WILL NOT BE REQUIRED ON BARRICADES OR DRUMS FOR DAY OPERATIONS. ALL LIGHTS SHALL BE MONODIRECTIONAL.
4. REFLECTIVE TEMPORARY PAVEMENT MARKINGS SHALL BE PLACED THROUGHOUT THE BARRICADED AREAS OF EACH TURN BAY AS SHOWN WHERE THE CLOSURE TIME IS GREATER THAN FOURTEEN (14) DAYS.
5. THIS APPLICATION ALSO APPLIES WHEN WORK IS BEING PERFORMED IN THE RIGHT LANE(S) AND THE RIGHT TURN BAY IS TO REMAIN OPEN. UNDER THIS CONDITION, "RIGHT TURN LANE" R3-1100R 24 x 24 (600 x 600) AND M6-2R 21 x 15 (530 x 380) SHALL BE USED.
6. THESE CONTROLS SHALL SUPPLEMENT MAINLINE TRAFFIC CONTROL FOR LANE CLOSURES.
7. THE SIGNS SHALL BE MOUNTED ABOVE THE BARRICADES/DRUMS ON SEPARATE SIGN SUPPORTS THAT MEET NCHRP 350 OR MASH REQUIREMENTS.
8. TRAFFIC CONTROL AND PROTECTION AT TURN BAYS (TO REMAIN OPEN TO TRAFFIC) SHALL BE INCLUDED IN THE COST OF SPECIFIED TRAFFIC CONTROL STANDARDS OR ITEMS.



DETAIL A

All dimensions are in inches (millimeters) unless otherwise shown.

MODEL: Default
FILE: h:\mhc\p\pub\lanroom.d\at\illinois.gov\PIWDOT\Documents\DOT_Offices\Illinet_1\Projects\129220\CaddData\Design\DESIGN.dgn

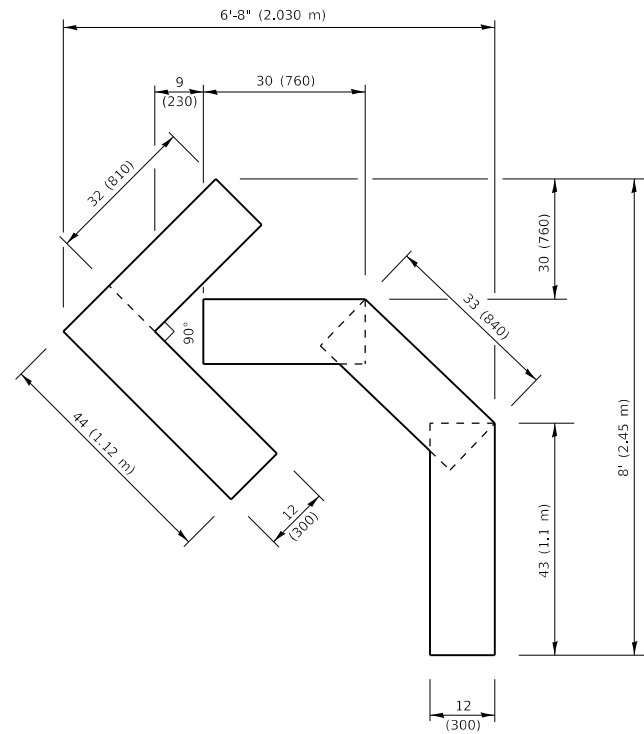
USER NAME = lababidim	DESIGNED - T. RAMMACHER 09-08-94	REVISED - R. BORO 09-14-09
	DRAWN - A. HOUSEH 11-07-95	REVISED - A. SCHUETZE 07-01-13
PLOT SCALE = 100,0000' / in.	CHECKED - A. HOUSEH 10-12-96	REVISED - A. SCHUETZE 09-15-16
PLOT DATE = 12/26/2019	DATE - T. RAMMACHER 01-06-00	REVISED -

STATE OF ILLINOIS
DEPARTMENT OF TRANSPORTATION

TRAFFIC CONTROL AND PROTECTION AT TURN BAYS
(TO REMAIN OPEN TO TRAFFIC)

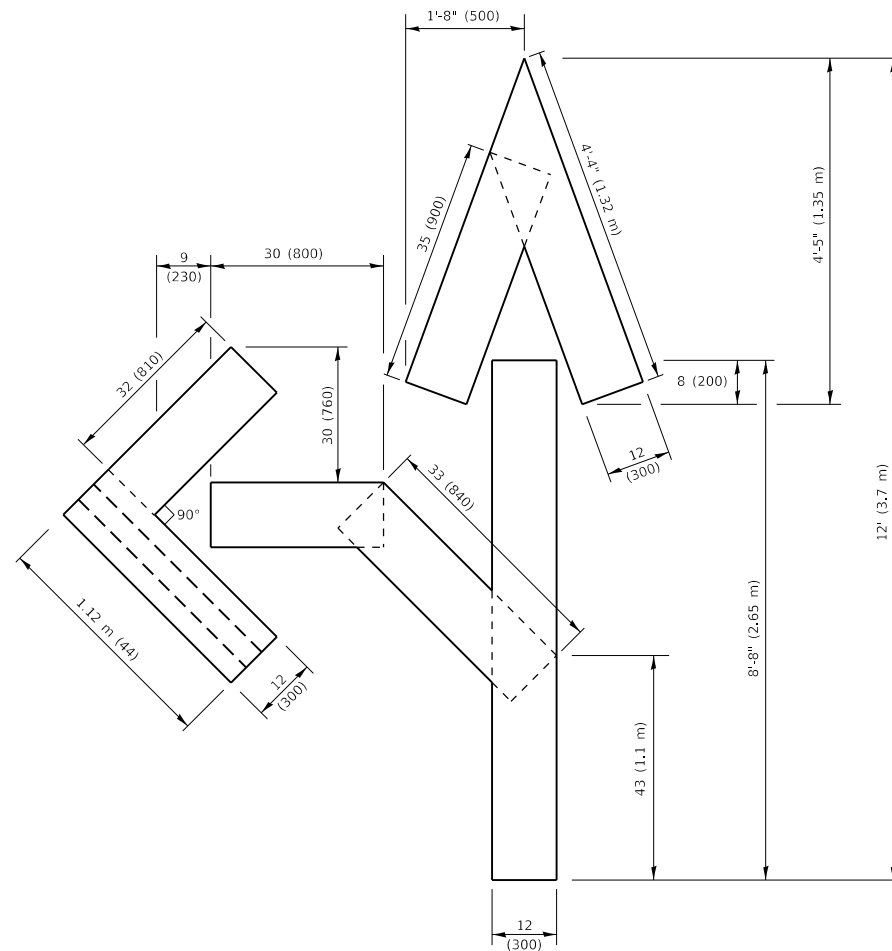
SCALE: NONE SHEET 1 OF 1 SHEETS STA. TO STA.

F.A.U. RTE.	SECTION	COUNTY	TOTAL SHEETS	SHEET NO.
361	2019-141-R5	WILL	28	25
TC-14		CONTRACT NO. 62K15		
ILLINOIS FED. AID PROJECT				



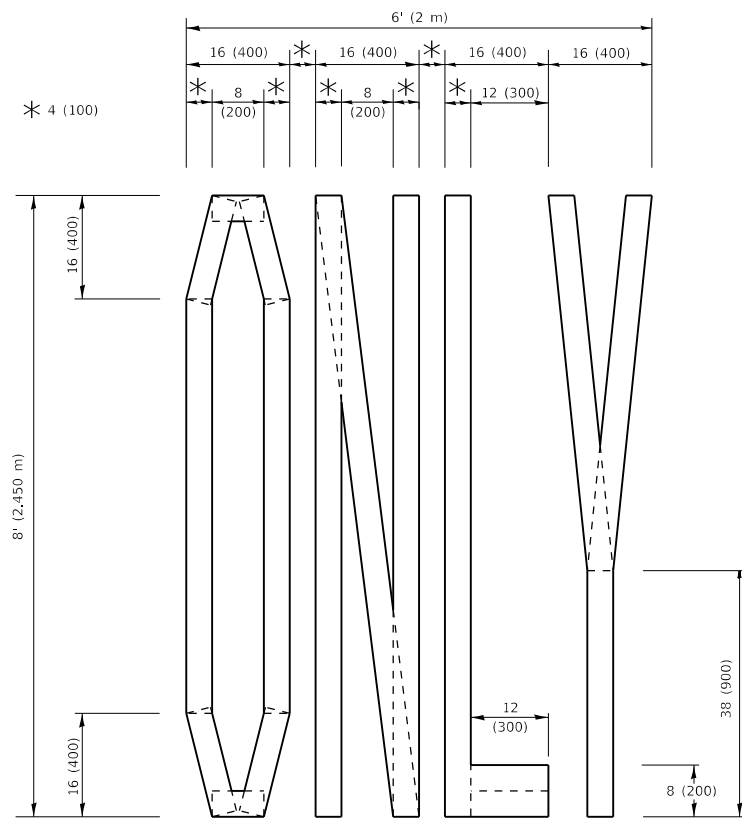
QUANTITY

4 (100) LINE = 45.5 ft. (13.9 m)
15.2 sq. ft. (1.41 sq. m)



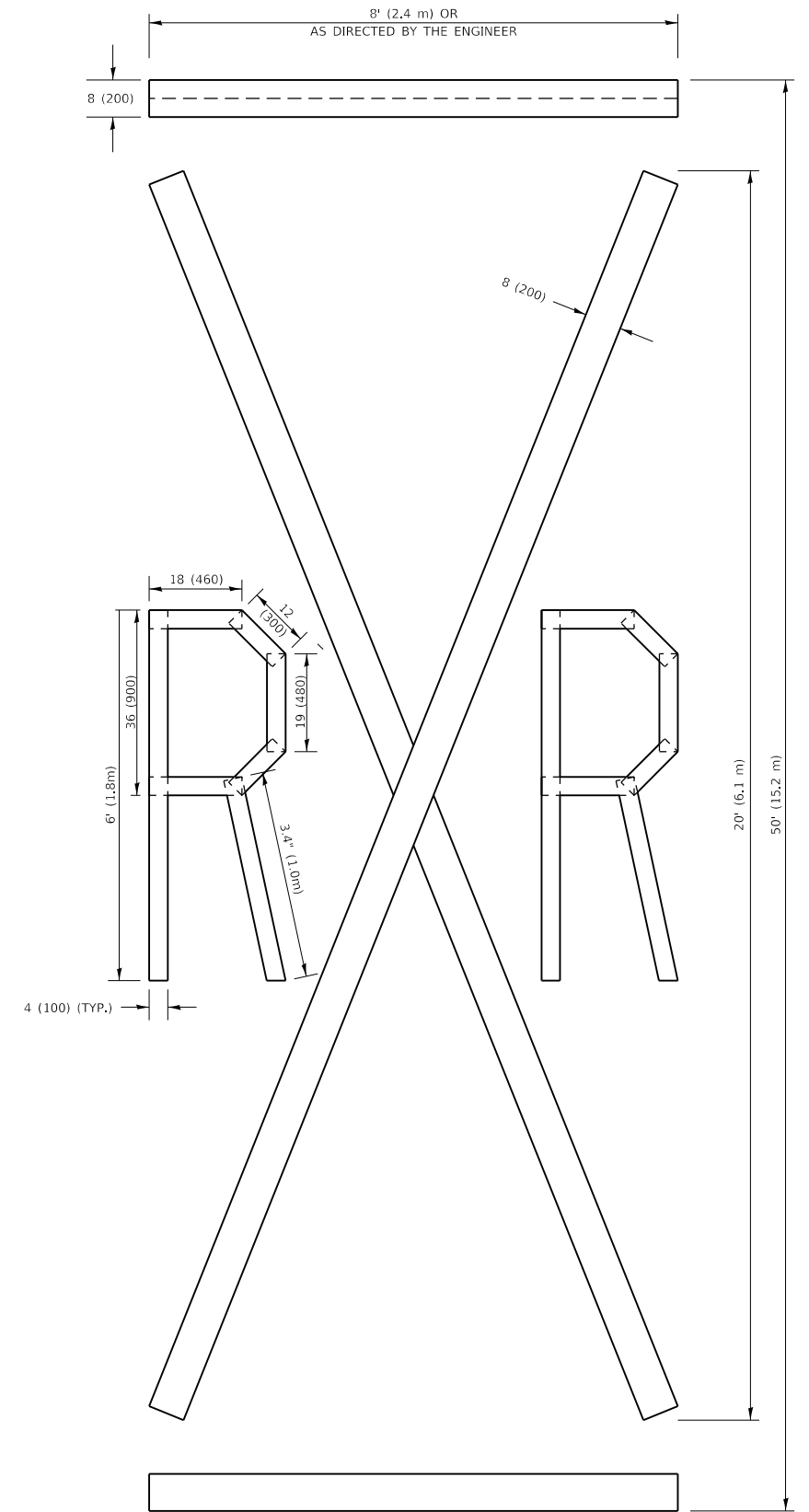
QUANTITY

4 (100) LINE = 82.5 ft. (25.1 m)
27.5 sq. ft. (2.53 sq. m)



QUANTITY

4 (100) LINE = 64.1 ft. (19.5 m)
21.4 sq. ft. (1.99 sq. m)



QUANTITY

4 (100) LINE = 225.9 ft. (68.9 m)
75.3 sq. ft. (6.99 sq. m)

NOTE:

ALL QUANTITIES OF PLACEMENT ARE REPRESENTED IN LINEAR FEET OF 4" LINES TO MATCH THE 4" TEMPORARY TAPE PAY ITEM AND REPRESENTS THE TOTAL QUANTITY OF 4" TAPE REQUIRED.

All dimensions are in inches (millimeters) unless otherwise shown.

MODEL: Default
FILE: Model: pavlpavmark.dwg
PROJECT: C:\Users\lababidim\Documents\DOT Office\Bridget 1\Projects\122220\CADD\pav\Design\Bridget.dwg

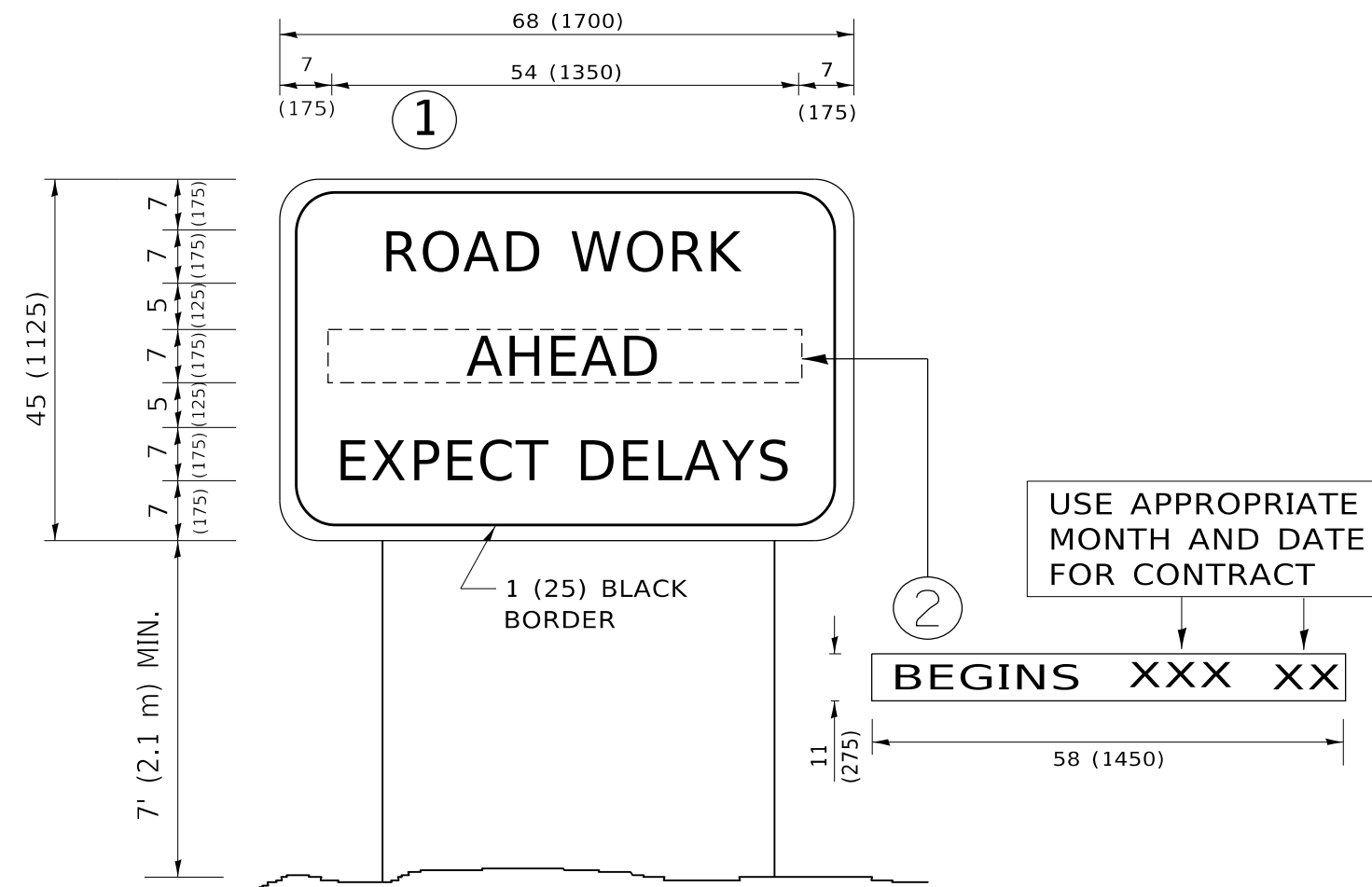
USER NAME = lababidim	DESIGNED -	REVISED - T. RAMMACHER 03-02-98
	DRAWN -	REVISED - E. GOMEZ 08-28-00
PLOT SCALE = 100.0001' / in.	CHECKED -	REVISED - E. GOMEZ 08-28-00
PLOT DATE = 12/26/2019	DATE - 09-18-94	REVISED - A. SCHUETZE 09-15-16

**STATE OF ILLINOIS
DEPARTMENT OF TRANSPORTATION**

SHORT TERM PAVEMENT MARKING LETTERS AND SYMBOLS

SCALE: NONE SHEET 1 OF 1 SHEETS STA. TO STA.

F.A.U. RTE.	SECTION	COUNTY	TOTAL SHEETS	SHEET NO.
361	2019-141-R5	WILL	28	26
TC-16			CONTRACT NO. 62K15	
ILLINOIS FED. AID PROJECT				



NOTES:

1. USE BLACK LETTERING ON ORANGE BACKGROUND.
2. ERECT SIGNS IN ADVANCE OF THE LOCATION FOR THE "ROAD CONSTRUCTION AHEAD" SIGN AT LOCATIONS AS DIRECTED BY THE ENGINEER.
3. ERECT SIGN ① WITH INSTALLED PANEL ② ONE WEEK PRIOR TO THE START OF CONSTRUCTION.
4. REMOVE PANEL ② SOON AFTER THE START OF CONSTRUCTION.
5. SEE SPECIAL PROVISION FOR "TEMPORARY INFORMATION SIGNING" FOR ADDITIONAL INFORMATION.
6. ONE SIGN ASSEMBLY EQUALS 25.70 SQ. FT. (2.3 SQ. M.)
7. SHALL BE PAID FOR AS TEMPORARY INFORMATION SIGNING.

ALL DIMENSIONS ARE IN INCHES (MILLIMETERS) UNLESS OTHERWISE SHOWN.

MODEL: Default
 FILE: \\nas01c.psu.edu\lanroom\data\illinois.gov\PWIDOT\Documents\DOT_Offices\Illinietc_1\Projects\129220\CADD\Drawings\Design\DRS4.dgn

USER NAME = lababidim	DESIGNED -	REVISED - R. MIRS 09-15-97
	DRAWN -	REVISED - R. MIRS 12-11-97
PLOT SCALE = 100.0000 ' / in.	CHECKED -	REVISED - T. RAMMACHER 02-02-99
PLOT DATE = 12/26/2019	DATE -	REVISED - C. JUCIUS 01-31-07

**STATE OF ILLINOIS
DEPARTMENT OF TRANSPORTATION**

**ARTERIAL ROAD
INFORMATION SIGN**

SCALE: NONE SHEET 1 OF 1 SHEETS STA. TO STA.

F.A.U RTE.	SECTION	COUNTY	TOTAL SHEETS	SHEET NO.
361	2019-141-R5	WILL	28	27
TC-22			CONTRACT NO. 62K15	
ILLINOIS FED. AID PROJECT				

