

152

03-06-2020 LETTING ITEM 152

STATE OF ILLINOIS
DEPARTMENT OF TRANSPORTATION

F.A. RYE	SECTION	COUNTY	TOTAL SHEETS	SHEET NO.
VAR. FY20 BRIDGE DECK SEALING	VARIOUS	ILLINOIS	19	1
BLDG'S CONTRACT NO. 70E27				

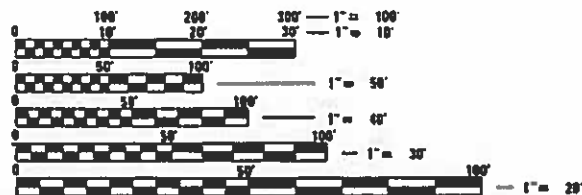
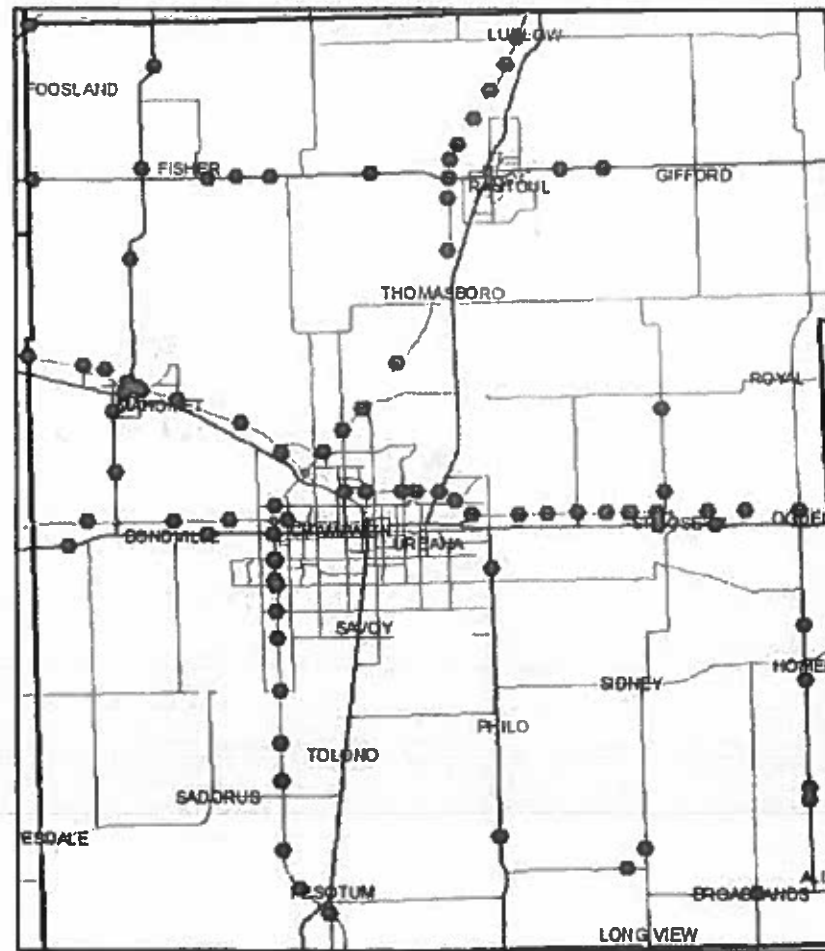
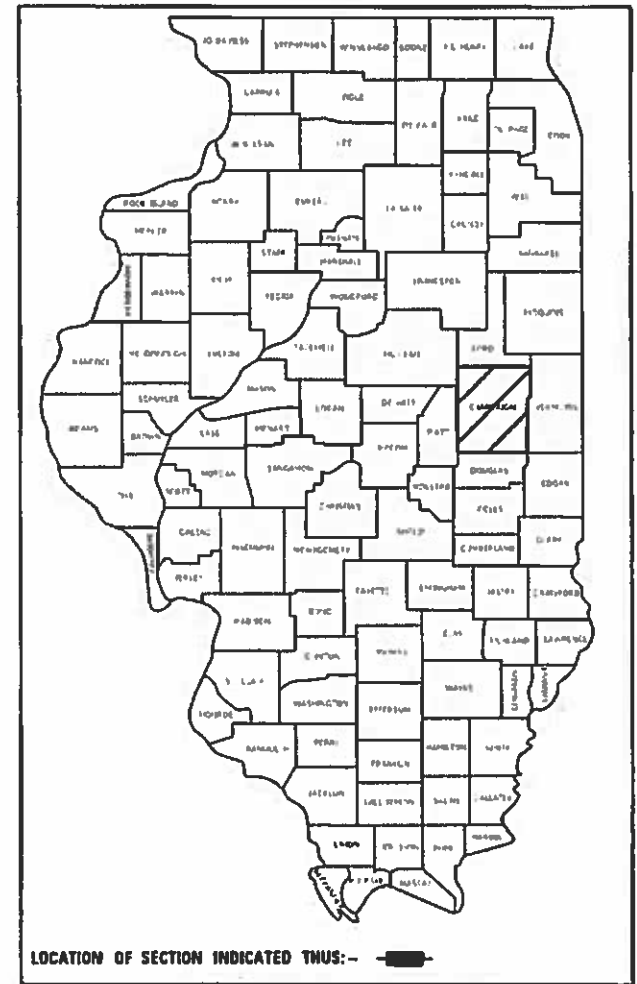
D-95-052-19

FOR INDEX OF SHEETS, SEE SHEET NO. 2

PROPOSED HIGHWAY PLANS

VARIOUS ROUTES
SECTION FY2020 BRIDGE DECK SEALING
PROJECT STP - EQS8(686)
BRIDGE PRESERVATION
CHAMPAIGN COUNTY

C-95-061-19



FULL SIZE PLANS HAVE BEEN PREPARED USING STANDARD ENGINEERING SCALES. REDUCED SIZED PLANS WILL NOT CONFORM TO STANDARD SCALES. IN MAKING MEASUREMENTS ON REDUCED PLANS THE ABOVE SCALES MAY BE USED.

J.U.L.I.E.
JOINT UTILITY LOCATION INFORMATION FOR EXCAVATION
1-800-892-0123
OR 811

PROJECT ENGINEER: TIM BRANDENBURG
PROJECT MANAGER

CONTRACT NO. 70E27

GROSS LENGTH = x.xx FT. = x.xxx MILE
NET LENGTH = x.xx FT. = x.xxx MILE

STATE OF ILLINOIS
DEPARTMENT OF TRANSPORTATION

SUBMITTED *October 20 2019*
Tim Brandenburg
REGIONAL ENGINEER

Jan 31 20 20
ENGINEER OF DESIGN AND ENVIRONMENT

Jan 31 20 20
DIRECTOR OF HIGHWAYS PROJECT IMPLEMENTATION

PRINTED BY THE AUTHORITY
OF THE STATE OF ILLINOIS

INDEX OF SHEETS

SHEET NO.	DESCRIPTION
1	COVER SHEET
2	INDEX OF SHEETS, GENERAL NOTES AND HIGHWAY STANDARDS
3 - 5	CHAMPAIGN COUNTY LOCATION MAPS
6	SUMMARY OF QUANTITIES
7 - 12	TYPICAL APPLICATION SECTIONS
13 - 18	CHAMPAIGN COUNTY SCHEDULES
19	DISTRICT 5 DETAIL - ROAD CLOSURES

GENERAL NOTES

G.N. - 100
 ENGLISH UNITS OF MEASUREMENT SHALL GOVERN OVER AND SUPERSEDE ANY METRIC UNITS SHOWN IN THIS CONTRACT. WHERE INCLUDED, METRIC UNITS ARE FOR INFORMATION ONLY.

G.N. - PAVEMENT MARKINGS AND MARKERS
 EXISTING PAVEMENT MARKINGS AND RAISED REFLECTIVE PAVEMENT MARKERS SHALL BE TEMPORARILY COVERED PRIOR TO APPLICATION OF THE DECK SURFACE TREATMENT, TO PREVENT THE MATERIAL FROM BEING APPLIED TO THE MARKINGS AND MARKERS. THE TEMPORARY COVERING SHALL BE REMOVED AFTER APPLICATION OF THE DECK SURFACE TREATMENT AND PRIOR TO OPENING TO TRAFFIC. COST IS INCLUDED WITH THE DECK SURFACE TREATMENT SPECIFIED.

NO COMMITMENTS

LIST OF HIGHWAY STANDARDS

STANDARD NO.	DESCRIPTION
000001-07	STANDARD SYMBOLS, ABBREVIATIONS AND PATTERNS
001006	DECIMAL OF AN INCH AND OF A FOOT
701201-05	LANE CLOSURE, 2 LANE, 2 WAY, DAY ONLY
701411-09	LANE CLOSURE, MULTILANE, AT ENTRANCES OR EXIT RAMP
701426-09	LANE CLOSURE, MULTILANE, INTERMITTENT OR MOVING OPERATIONS FOR SPEEDS \geq 45 MPH
701427-05	LANE CLOSURE, MULTILANE, INTERMITTENT OR MOVING OPERATIONS FOR SPEEDS \leq 40 MPH
701501-06	URBAN LANE CLOSURE, 2L, 2W, UNDIVIDED
701901-08	TRAFFIC CONTROL DEVICES

MODEL: \\MODEL\MHFE
 FILE: \\MAILS_PUB\pubmail\comad\at\illinois.gov\PIWDOT\Documents\DOT_Offices\District_5\Projects\DS70E27\CADD\data\Hydraulics\DS70E27-ah-cg-nose.dgn

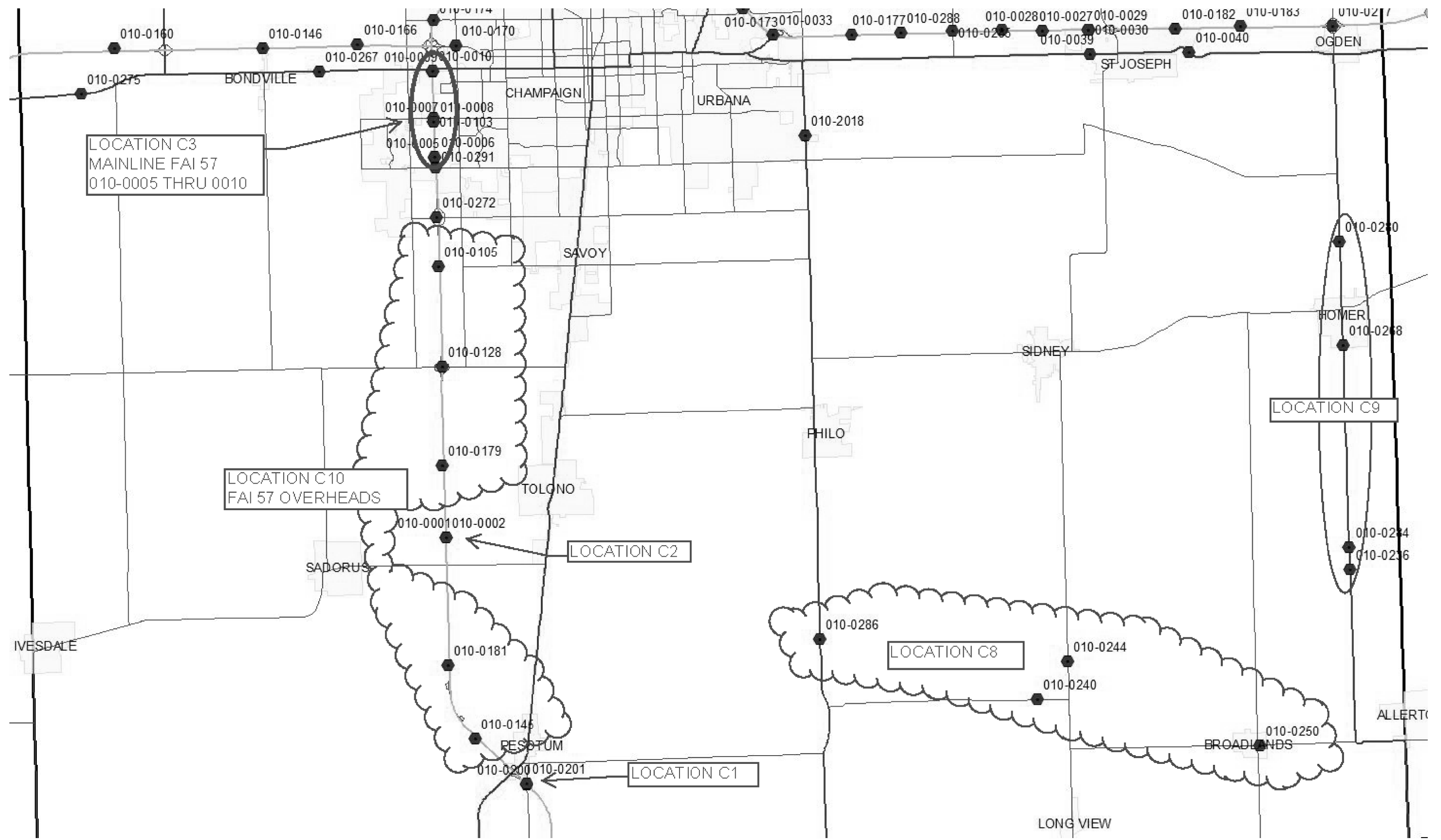
USER NAME = brandenburgtj	DESIGNED - TJB	REVISED -
	DRAWN -	REVISED -
PLOT SCALE = 40.0000 ' / in.	CHECKED -	REVISED -
PLOT DATE = 6/26/2019	DATE - 6/21/2019	REVISED -

**STATE OF ILLINOIS
 DEPARTMENT OF TRANSPORTATION**

**INDEX OF SHEETS, GENERAL NOTES
 & HIGHWAY STANDARDS**

SCALE: SHEET 1 OF 1 SHEETS STA. TO STA.

F.A. RTE.	SECTION	COUNTY	TOTAL SHEETS	SHEET NO.
VAR.	FY20 BRIDGE DECK SEALING	VARIOUS	19	2
			CONTRACT NO. 70E27	
		ILLINOIS	FED. AID PROJECT	



MODEL: \\MODELNAME
 FILE: \\FILENAME
 PROJECT: \\PROJECTNAME
 USER: \\USER
 DATE: \\DATE
 TIME: \\TIME
 PLOT DATE: 6/26/2019

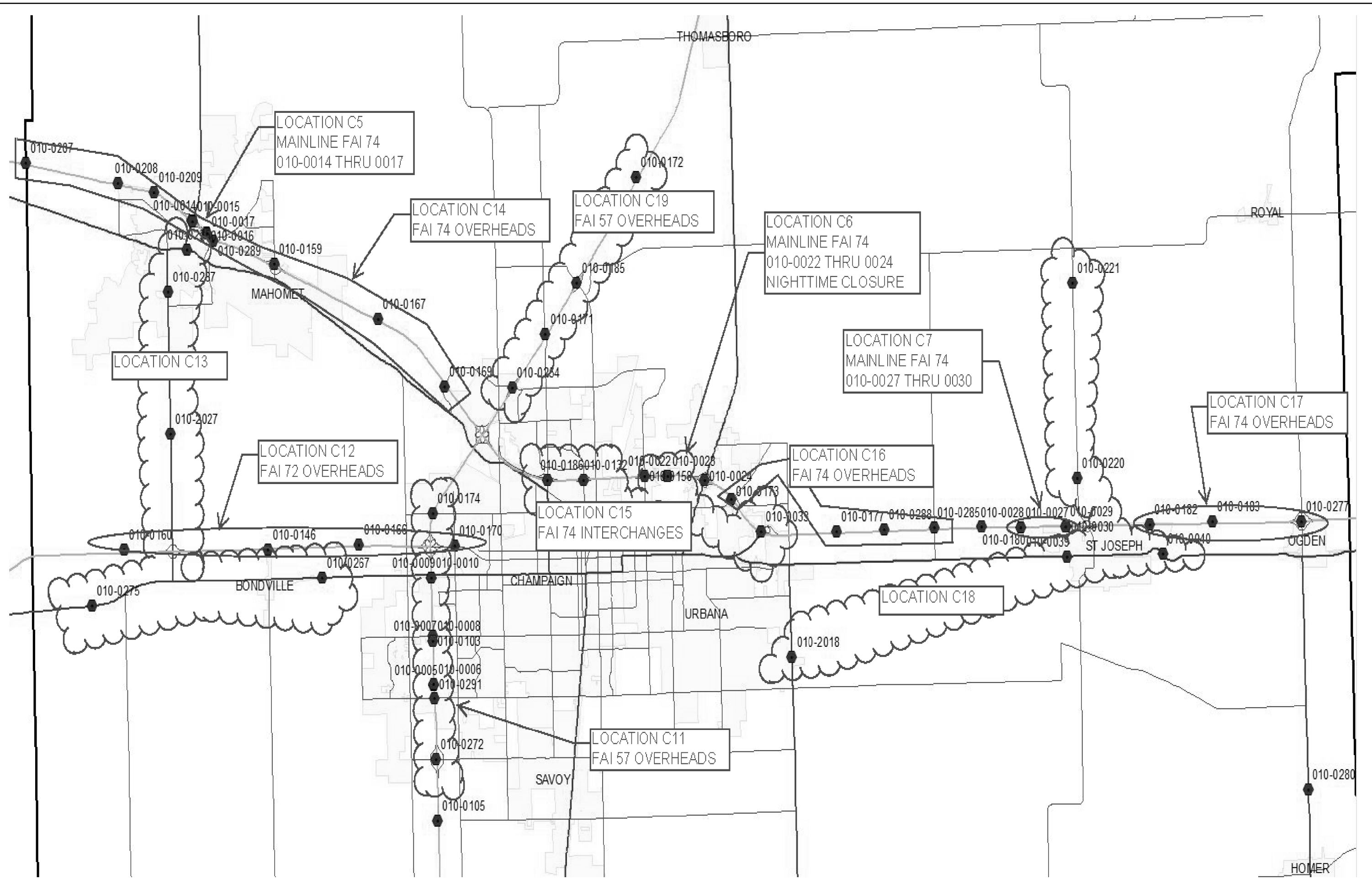
USER NAME = brandenburgj	DESIGNED - TJB	REVISED -
DRAWN -	REVISED -	
PLOT SCALE = 40,0000' / in.	CHECKED -	REVISED -
PLOT DATE = 6/26/2019	DATE - 6/21/2019	REVISED -

STATE OF ILLINOIS
DEPARTMENT OF TRANSPORTATION

CHAMPAIGN COUNTY LOCATION MAP - SOUTH
 SCALE: SHEET 1 OF 3 SHEETS STA. TO STA.

F.A. RTE.	SECTION	COUNTY	TOTAL SHEETS	SHEET NO.
VAR.	FY20 BRIDGE DECK SEALING	VARIOUS	19	3
CONTRACT NO. 70E27				
ILLINOIS FED. AID PROJECT				

MODEL: \\MODELNAME
 FILE: \\FILEPATH\Documents\DOT_Offices\District_5\Projects\0570E27\CADD\DATA\Hydraulics\0570E27-ctbmasas.dwg



USER NAME = brandenburgj	DESIGNED - TJB	REVISED -
	DRAWN -	REVISED -
PLOT SCALE = 40,0000' / in.	CHECKED -	REVISED -
PLOT DATE = 6/26/2019	DATE - 6/21/2019	REVISED -

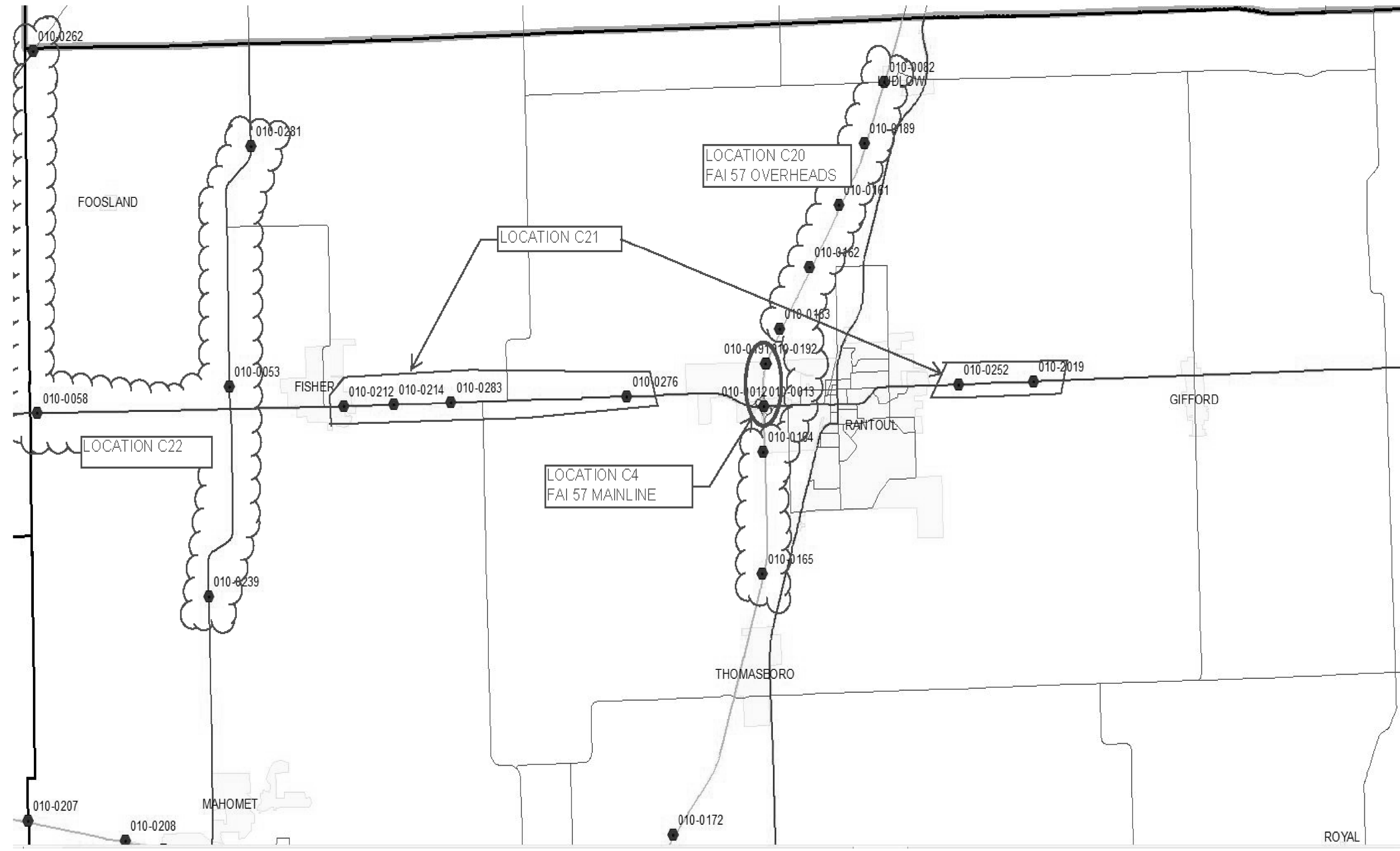
**STATE OF ILLINOIS
 DEPARTMENT OF TRANSPORTATION**

CHAMPAIGN COUNTY LOCATION MAP - CENTRAL

SCALE: SHEET 2 OF 3 SHEETS STA. TO STA.

F.A. RTE.	SECTION	COUNTY	TOTAL SHEETS	SHEET NO.
VAR.	FY20 BRIDGE DECK SEALING	VARIOUS	19	4
CONTRACT NO. 70E27				
ILLINOIS FED. AID PROJECT				

MODEL: \\MODELNAME
 FILE: \\name: \\path\name.dwg
 PROJECT: \\path\name.dwg
 USER: \\name



USER NAME = brandenburgj	DESIGNED - TJB	REVISED -
DRAWN -	REVISED -	
PLOT SCALE = 40,0000' / in.	CHECKED -	REVISED -
PLOT DATE = 6/26/2019	DATE - 6/21/2019	REVISED -

**STATE OF ILLINOIS
 DEPARTMENT OF TRANSPORTATION**

CHAMPAIGN COUNTY LOCATION MAP - NORTH

SCALE: SHEET 3 OF 3 SHEETS STA. TO STA.

F.A. RTE.	SECTION	COUNTY	TOTAL SHEETS	SHEET NO.
VAR.	FY20 BRIDGE DECK SEALING	VARIOUS	19	5
			CONTRACT NO. 70E27	
ILLINOIS FED. AID PROJECT				

LOCATION OF WORK:
 FUNDING BREAKOUT:
 CONSTRUCTION TYPE CODE:

VARIOUS ROUTES
SECTION FY2020 BRIDGE DECK SEALING
INTERSTATE, MULTI-LANE AND TWO-LANE HIGHWAYS
80% FEDERAL / 20% STATE
BRIDGE PRESERVATION
0044
CHAMPAIGN COUNTY

CODE NO	ITEM	UNIT	TOTAL QUANTITY	QUANTITY	QUANTITY
67100100	MOBILIZATION	L SUM	1.0	0.4	0.6
70100420	TRAFFIC CONTROL AND PROTECTION, STANDARD 701411	EACH	18.0	5.0	13.0
70100450	TRAFFIC CONTROL AND PROTECTION, STANDARD 701201	L SUM	1.0	0.8	0.2
70102620	TRAFFIC CONTROL AND PROTECTION, STANDARD 701501	L SUM	1.0	0.0	1.0
70107025	CHANGEABLE MESSAGE SIGN	CAL DA	70.0	28.0	42.0
70200100	NIGHTTIME WORKZONE LIGHTING	L SUM	1.0	.0	1.0
X5870015	BRIDGE DECK CONCRETE SEALER	SQ FT	970,786.0	390,722.0	580,064.0

NO SPECIALTY ITEMS

MODEL: #MODELNAME\$
 FILE NAME: p:\gpr\com.dwt\illinois.gov\PWIDOT\Documents\DOT_Offices\District_5\Projects\0570E27\CADD\Drawings\Hydraulics\0570E27-ht-seq.dgn

USER NAME = brandenburgj	DESIGNED - TJB	REVISED -
	DRAWN -	REVISED -
PLOT SCALE = 40.0000' / in.	CHECKED -	REVISED -
PLOT DATE = 6/26/2019	DATE - 6/21/2019	REVISED -

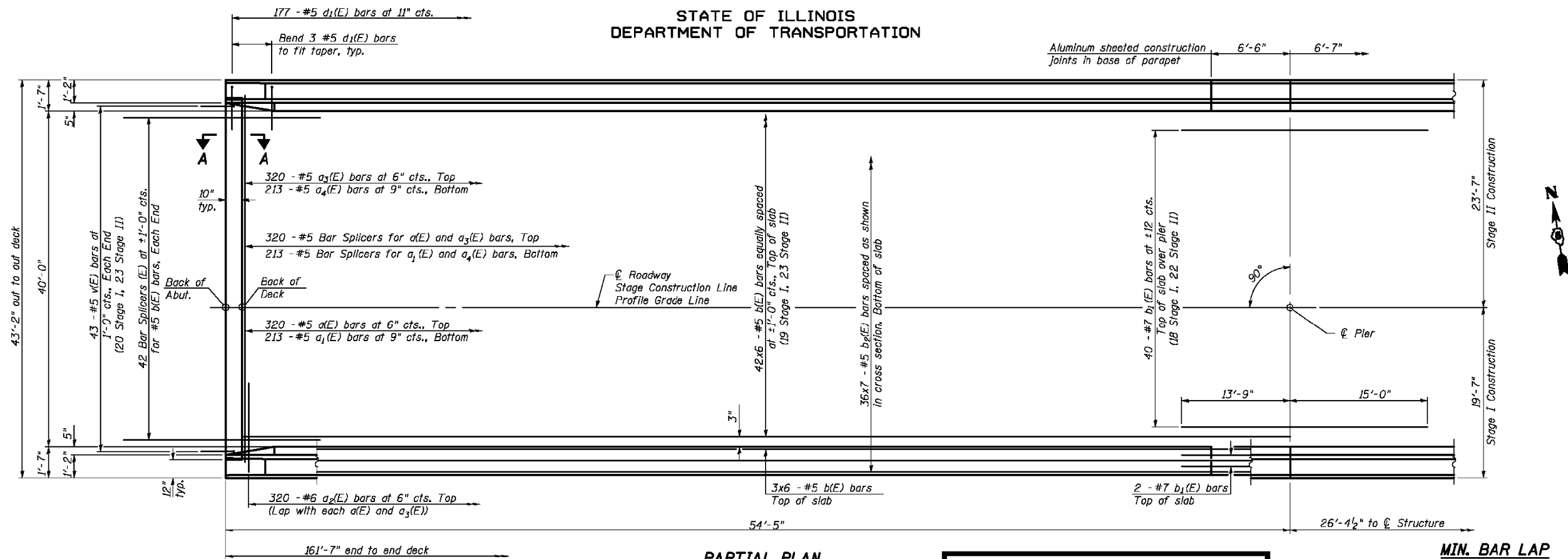
**STATE OF ILLINOIS
 DEPARTMENT OF TRANSPORTATION**

SUMMARY OF QUANTITIES

SCALE: SHEET 1 OF 1 SHEETS STA. TO STA.

F.A. RTE.	SECTION	COUNTY	TOTAL SHEETS	SHEET NO.
VAR.	FY20 BRIDGE DECK SEALING	VARIOUS	19	6
			CONTRACT NO. 70E27	
		ILLINOIS FED. AID PROJECT		

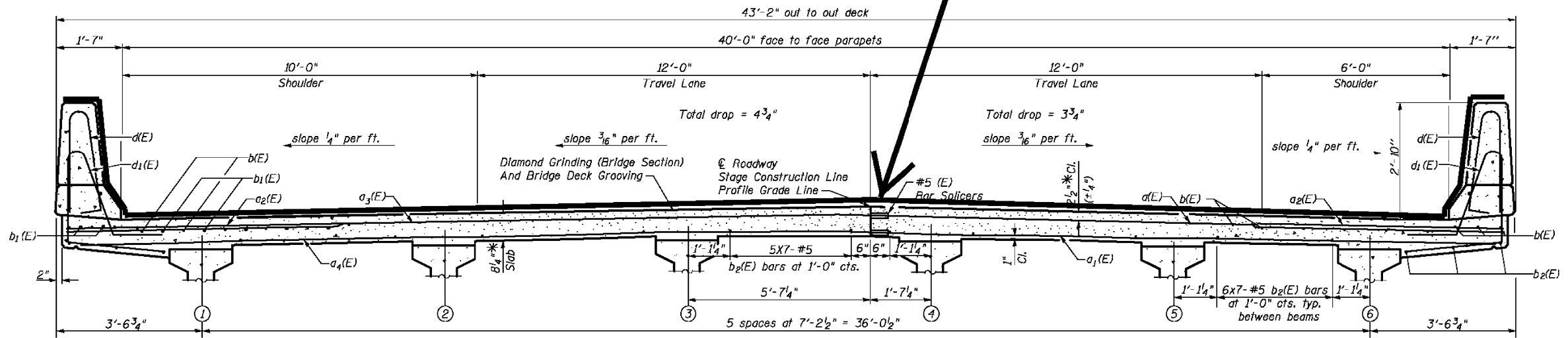
STATE OF ILLINOIS
DEPARTMENT OF TRANSPORTATION



PARTIAL PLAN

PROPOSED BRIDGE DECK CONCRETE SEALER

MIN. BAR LAP
#5 Bar = 1'-8"



TYPICAL SECTION; FOUR-LANE WITH PARAPET; DUAL STRUCTURES

NEAR PIER

NEAR MIDSPAN

SUPERSTRUCTURE
I-74 OVER LITTLE KICKAPOO CREEK
STRUCTURE NO. 057-0120
AND 057-0121

STRAND ASSOCIATES, INC.

DESIGNED	RRD
CHECKED	AJS
DRAWN	KAS
CHECKED	JAR

Notes:
See Sheet 12 of 27 for superstructure details and Bill of Material.
Bars indicated thus 20 x 3-#5 etc. indicates 20 lines of bars with 3 lengths per line.
See Sheet 12 of 27 for parapet reinforcement.
See Sheet 27 of 27 for bar splicers details.
See Sheet 11 of 27 for diaphragm details.

CROSS SECTION
(Looking Upstation Westbound)
(Looking Downstation Eastbound)

* Prior to grinding

SHEET NO. 10 27 SHEETS	F.A.I. RTE. 74	SECTION (57-21B)BR	COUNTY MCLEAN	TOTAL SHEETS 61	SHEET NO. 22
	SUPERSTRUCTURE DETAILS (1 OF 3)			CONTRACT NO. 70641	
FED. ROAD DIST. NO. 7 ILLINOIS FED. AID PROJECT					

MODEL: \\MODEL\NAME: FILE: \\MODEL\NAME: PROJECT: 057-0121-0120-0121-0122-0123-0124-0125-0126-0127-0128-0129-0130-0131-0132-0133-0134-0135-0136-0137-0138-0139-0140-0141-0142-0143-0144-0145-0146-0147-0148-0149-0150-0151-0152-0153-0154-0155-0156-0157-0158-0159-0160-0161-0162-0163-0164-0165-0166-0167-0168-0169-0170-0171-0172-0173-0174-0175-0176-0177-0178-0179-0180-0181-0182-0183-0184-0185-0186-0187-0188-0189-0190-0191-0192-0193-0194-0195-0196-0197-0198-0199-0200-0201-0202-0203-0204-0205-0206-0207-0208-0209-0210-0211-0212-0213-0214-0215-0216-0217-0218-0219-0220-0221-0222-0223-0224-0225-0226-0227-0228-0229-0230-0231-0232-0233-0234-0235-0236-0237-0238-0239-0240-0241-0242-0243-0244-0245-0246-0247-0248-0249-0250-0251-0252-0253-0254-0255-0256-0257-0258-0259-0260-0261-0262-0263-0264-0265-0266-0267-0268-0269-0270-0271-0272-0273-0274-0275-0276-0277-0278-0279-0280-0281-0282-0283-0284-0285-0286-0287-0288-0289-0290-0291-0292-0293-0294-0295-0296-0297-0298-0299-0300-0301-0302-0303-0304-0305-0306-0307-0308-0309-0310-0311-0312-0313-0314-0315-0316-0317-0318-0319-0320-0321-0322-0323-0324-0325-0326-0327-0328-0329-0330-0331-0332-0333-0334-0335-0336-0337-0338-0339-0340-0341-0342-0343-0344-0345-0346-0347-0348-0349-0350-0351-0352-0353-0354-0355-0356-0357-0358-0359-0360-0361-0362-0363-0364-0365-0366-0367-0368-0369-0370-0371-0372-0373-0374-0375-0376-0377-0378-0379-0380-0381-0382-0383-0384-0385-0386-0387-0388-0389-0390-0391-0392-0393-0394-0395-0396-0397-0398-0399-0400-0401-0402-0403-0404-0405-0406-0407-0408-0409-0410-0411-0412-0413-0414-0415-0416-0417-0418-0419-0420-0421-0422-0423-0424-0425-0426-0427-0428-0429-0430-0431-0432-0433-0434-0435-0436-0437-0438-0439-0440-0441-0442-0443-0444-0445-0446-0447-0448-0449-0450-0451-0452-0453-0454-0455-0456-0457-0458-0459-0460-0461-0462-0463-0464-0465-0466-0467-0468-0469-0470-0471-0472-0473-0474-0475-0476-0477-0478-0479-0480-0481-0482-0483-0484-0485-0486-0487-0488-0489-0490-0491-0492-0493-0494-0495-0496-0497-0498-0499-0500-0501-0502-0503-0504-0505-0506-0507-0508-0509-0510-0511-0512-0513-0514-0515-0516-0517-0518-0519-0520-0521-0522-0523-0524-0525-0526-0527-0528-0529-0530-0531-0532-0533-0534-0535-0536-0537-0538-0539-0540-0541-0542-0543-0544-0545-0546-0547-0548-0549-0550-0551-0552-0553-0554-0555-0556-0557-0558-0559-0560-0561-0562-0563-0564-0565-0566-0567-0568-0569-0570-0571-0572-0573-0574-0575-0576-0577-0578-0579-0580-0581-0582-0583-0584-0585-0586-0587-0588-0589-0590-0591-0592-0593-0594-0595-0596-0597-0598-0599-0600-0601-0602-0603-0604-0605-0606-0607-0608-0609-0610-0611-0612-0613-0614-0615-0616-0617-0618-0619-0620-0621-0622-0623-0624-0625-0626-0627-0628-0629-0630-0631-0632-0633-0634-0635-0636-0637-0638-0639-0640-0641-0642-0643-0644-0645-0646-0647-0648-0649-0650-0651-0652-0653-0654-0655-0656-0657-0658-0659-0660-0661-0662-0663-0664-0665-0666-0667-0668-0669-0670-0671-0672-0673-0674-0675-0676-0677-0678-0679-0680-0681-0682-0683-0684-0685-0686-0687-0688-0689-0690-0691-0692-0693-0694-0695-0696-0697-0698-0699-0700-0701-0702-0703-0704-0705-0706-0707-0708-0709-0710-0711-0712-0713-0714-0715-0716-0717-0718-0719-0720-0721-0722-0723-0724-0725-0726-0727-0728-0729-0730-0731-0732-0733-0734-0735-0736-0737-0738-0739-0740-0741-0742-0743-0744-0745-0746-0747-0748-0749-0750-0751-0752-0753-0754-0755-0756-0757-0758-0759-0760-0761-0762-0763-0764-0765-0766-0767-0768-0769-0770-0771-0772-0773-0774-0775-0776-0777-0778-0779-0780-0781-0782-0783-0784-0785-0786-0787-0788-0789-0790-0791-0792-0793-0794-0795-0796-0797-0798-0799-0800-0801-0802-0803-0804-0805-0806-0807-0808-0809-0810-0811-0812-0813-0814-0815-0816-0817-0818-0819-0820-0821-0822-0823-0824-0825-0826-0827-0828-0829-0830-0831-0832-0833-0834-0835-0836-0837-0838-0839-0840-0841-0842-0843-0844-0845-0846-0847-0848-0849-0850-0851-0852-0853-0854-0855-0856-0857-0858-0859-0860-0861-0862-0863-0864-0865-0866-0867-0868-0869-0870-0871-0872-0873-0874-0875-0876-0877-0878-0879-0880-0881-0882-0883-0884-0885-0886-0887-0888-0889-0890-0891-0892-0893-0894-0895-0896-0897-0898-0899-0900-0901-0902-0903-0904-0905-0906-0907-0908-0909-0910-0911-0912-0913-0914-0915-0916-0917-0918-0919-0920-0921-0922-0923-0924-0925-0926-0927-0928-0929-0930-0931-0932-0933-0934-0935-0936-0937-0938-0939-0940-0941-0942-0943-0944-0945-0946-0947-0948-0949-0950-0951-0952-0953-0954-0955-0956-0957-0958-0959-0960-0961-0962-0963-0964-0965-0966-0967-0968-0969-0970-0971-0972-0973-0974-0975-0976-0977-0978-0979-0980-0981-0982-0983-0984-0985-0986-0987-0988-0989-0990-0991-0992-0993-0994-0995-0996-0997-0998-0999-1000

USER NAME = brandenburgjt	DESIGNED - TJB	REVISED -
PLOT SCALE = 40.0000 ' / in.	CHECKED -	REVISED -
PLOT DATE = 6/26/2019	DATE - 6/21/2019	REVISED -

STATE OF ILLINOIS
DEPARTMENT OF TRANSPORTATION

TYPICAL SECTIONS

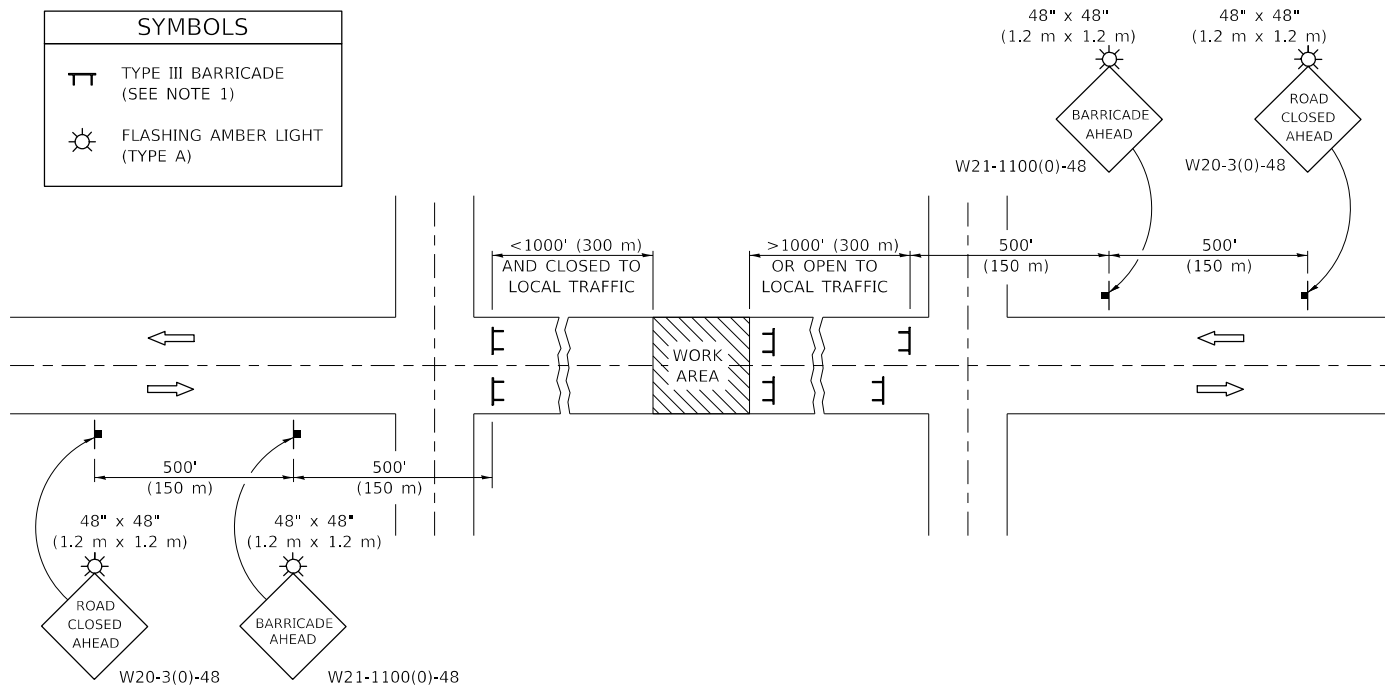
SCALE: SHEET 1 OF 6 SHEETS STA. TO STA.

F.A.I. RTE.	SECTION	COUNTY	TOTAL SHEETS	SHEET NO.
VAR. FY20 BRIDGE DECK SEALING	VARIOUS	ILLINOIS	19	7
CONTRACT NO. 70E27			ILLINOIS FED. AID PROJECT	

ROAD CLOSURE

SIDEROAD / STREET CLOSURE

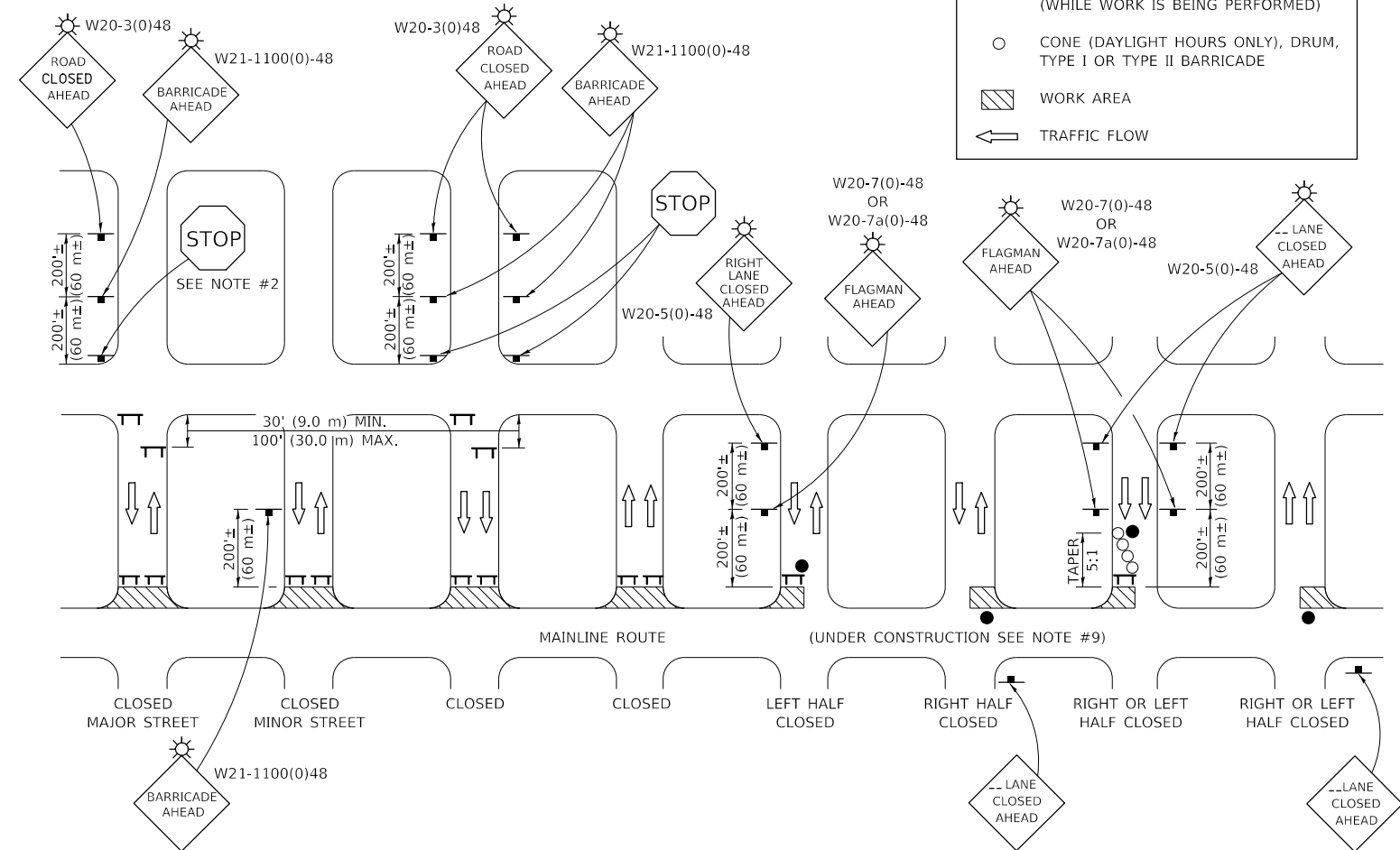
SYMBOLS	
	TYPE III BARRICADE (SEE NOTE 1)
	FLASHING AMBER LIGHT (TYPE A)



GENERAL NOTES

- TYPE III BARRICADES SHALL BE AS SHOWN ON STANDARD 701901 "TYPICAL APPLICATIONS OF TYPE III BARRICADES CLOSING A ROAD". EACH TYPE III BARRICADE SHALL HAVE TWO FLASHING AMBER LIGHTS MOUNTED ABOVE IT.
- IF THE ROAD IS OPEN TO LOCAL TRAFFIC OR EXCEEDS 1000' (300 m), ANOTHER SET OF TYPE III BARRICADES, EQUIPPED AS IN NOTE 1 ABOVE, SHALL BE PLACED AT EACH END OF THE WORK AREA.
- WHEN A STOP CONDITION EXISTS, NO SIGNS ARE REQUIRED IN ADVANCE OF THE "STOP" SIGN WHEN THE ROAD IS CLOSED WITHIN 100' (30 m) OF THE INTERSECTION.
- STANDARD 701901 SHALL APPLY FOR THE PLACEMENT & DESIGN OF TYPE III BARRICADES.
- IF A TYPE III BARRICADE WITH AN ATTACHED SIGN PANEL WHICH MEETS NCHRP 350 IS NOT AVAILABLE, THE SIGNS MAY BE MOUNTED ON AN NCHRP 350 TEMPORARY SIGN SUPPORT DIRECTLY IN FRONT OF THE BARRICADE.
- REFLECTORIZED STRIPING SHALL APPEAR ON BOTH SIDES OF THE TYPE III BARRICADES IF ROAD IS OPEN TO LOCAL TRAFFIC.
- ALL SIGNS SHALL BE POST MOUNTED IF THE CLOSURE TIME EXCEEDS FOUR DAYS.
- A MINIMUM OF TWO FLASHING LIGHTS SHALL BE USED AT NIGHT ON EACH APPROACH IN ADVANCE OF THE WORK AREA. FLASHING LIGHTS SHALL BE INSTALLED ABOVE THE FIRST TWO SIGNS IN THE SERIES.
- LONGITUDINAL DIMENSIONS MAY BE ADJUSTED SLIGHTLY TO FIT FIELD CONDITIONS.
- FORMS BT. 725 AND BT. 726 ARE REQUIRED.
- WHEN A SIDEROAD INTERSECTS THE HIGHWAY ON WHICH WORK IS BEING PERFORMED, ADDITIONAL TRAFFIC DEVICES SHALL BE ERECTED AND PROVIDED AS DIRECTED BY THE ENGINEER.
- AN ADDITIONAL SIGN MAY BE REQUIRED AT A MAJOR INTERSECTING ROAD IN ADVANCE OF THE CLOSURE. THE ADDITIONAL SIGN SHALL GIVE THE DISTANCE TO THE BARRICADE IN MILES OR FRACTIONS OF A MILE.

SYMBOLS	
	TYPE III BARRICADE (SEE NOTE)
	FLASHING LIGHT
	FLAGGER WITH TRAFFIC CONTROL SIGN (WHILE WORK IS BEING PERFORMED)
	CONE (DAYLIGHT HOURS ONLY), DRUM, TYPE I OR TYPE II BARRICADE
	WORK AREA
	TRAFFIC FLOW



GENERAL NOTES

- TYPE III BARRICADES SHALL BE AS SHOWN ON "TYPICAL APPLICATIONS OF TYPE III BARRICADES CLOSING A ROAD". EACH TYPE III BARRICADE SHALL HAVE TWO FLASHING AMBER LIGHTS MOUNTED ABOVE IT.
- WHERE A STOP CONDITION EXISTS, AS SHOWN ABOVE, WARNING SIGNS MAY BE OMITTED IN ADVANCE OF THE "STOP" SIGN.
- STANDARD 701901 SHALL APPLY FOR THE PLACEMENT & MANUFACTURE OF TYPE III BARRICADES.
- ALL SIGNS SHALL BE POST MOUNTED IF THE CLOSURE TIME EXCEEDS FOUR DAYS.
- ONE FLASHING LIGHT IS REQUIRED ABOVE EACH ADVANCE WARNING SIGN DURING HOURS OF DARKNESS.
- LONGITUDINAL DIMENSIONS MAY BE ADJUSTED SLIGHTLY TO FIT FIELD CONDITIONS.
- FORMS BT 725 AND BT 726 ARE REQUIRED.
- THE MAINLINE ROUTE TEMPORARY TRAFFIC CONTROL SHALL BE IN ACCORDANCE WITH THE PLANS, SPECIAL PROVISIONS AND STANDARD SPECIFICATIONS.
- ALL FLAGGERS REQUIRED AT SIDE ROADS AND ENTRANCES REMAINING OPEN TO TRAFFIC AND/OR ADDITIONAL BARRICADES REQUIRED BY THE ENGINEER TO CLOSE SIDE ROADS AND ENTRANCES WILL BE PAID FOR ACCORDING TO ARTICLE 109.04.

Note: All dimensions are in INCHES (millimeters) unless otherwise shown.

MODEL: s:\MODEL\MHFE
 FILE: MHFE.dwg
 PROJECT: 7020000
 OFFICE: DISTRICT 5
 PROJECT: 7020000
 CADD: 7020000
 HYDRAULICS: 7020000
 ELECTRICAL: 7020000

USER NAME = brandenburgjt	DESIGNED -	REVISED - 11/06
	DRAWN -	REVISED - 12/07
PLOT SCALE = 40.0000' / in.	CHECKED -	REVISED - 09/09 KJT
PLOT DATE = 6/26/2019	DATE -	REVISED -

STATE OF ILLINOIS
DEPARTMENT OF TRANSPORTATION

TRAFFIC CONTROL & PROTECTION DEVICES
(ROAD & SIDEROAD / STREET CLOSURES)

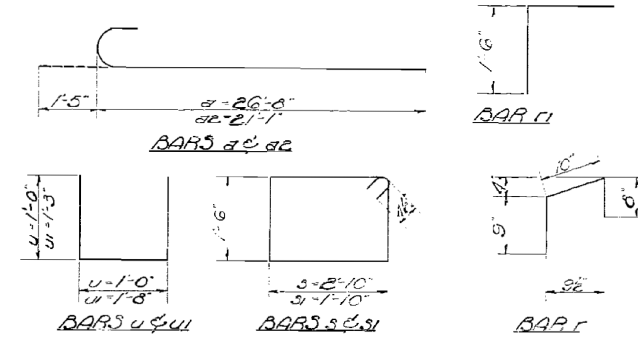
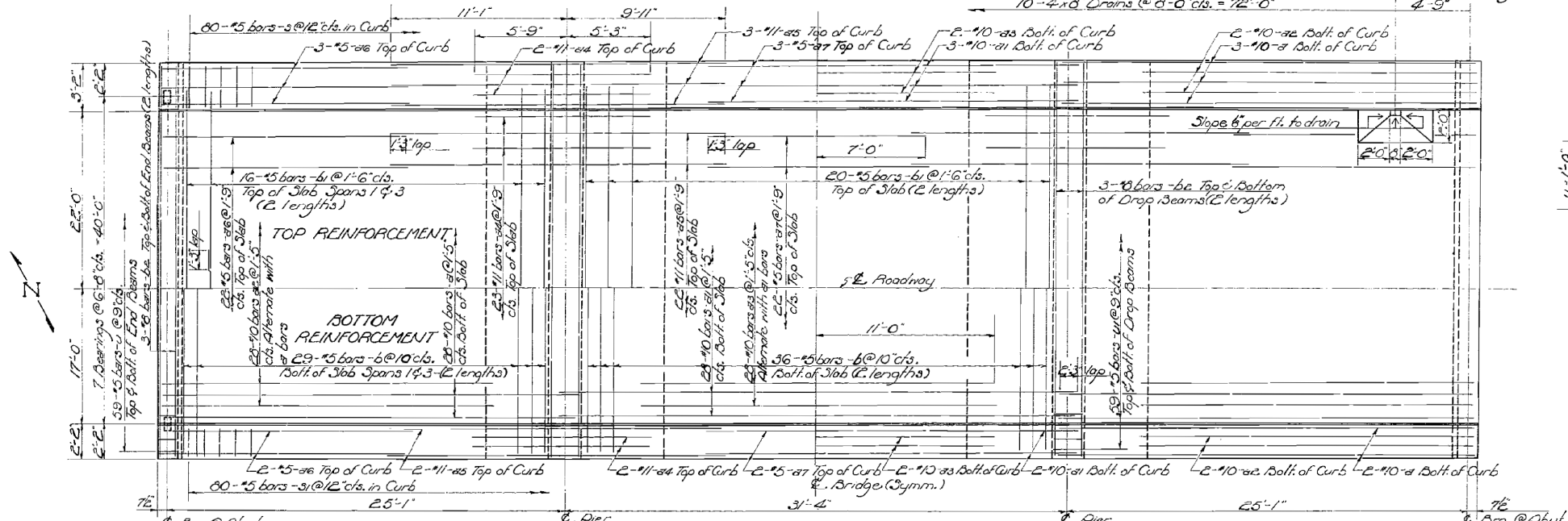
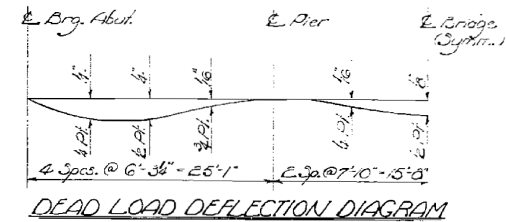
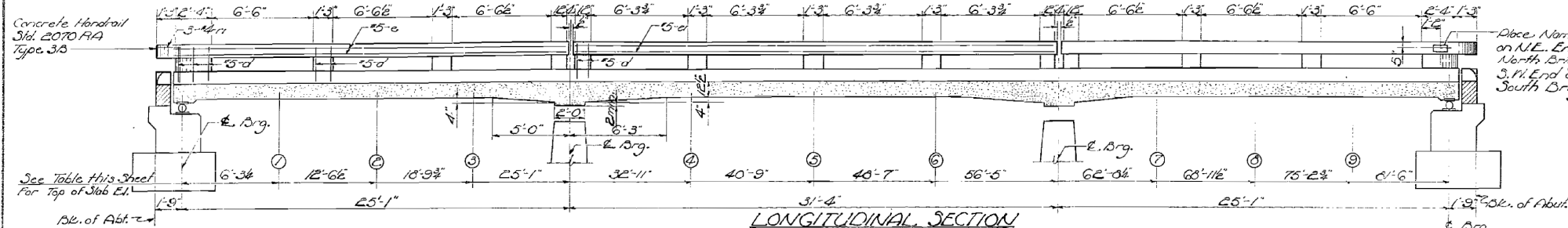
SCALE: SHEET 1 OF 1 SHEETS STA. TO STA.

DISTRICT 5 DETAIL NO. 7020000

F.A. RTE.	SECTION	COUNTY	TOTAL SHEETS	SHEET NO.
VAR.	FY20 BRIDGE DECK SEALING	VARIOUS	19	19
				CONTRACT NO. 70E27
		ILLINOIS	FED. AID PROJECT	

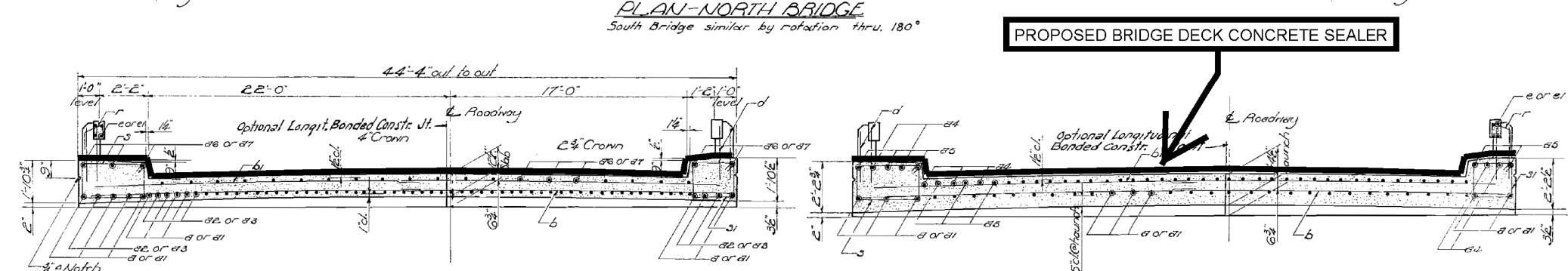
STATE OF ILLINOIS
DEPARTMENT OF PUBLIC WORKS & BUILDINGS
DIVISION OF HIGHWAYS

PROJECT NO.	SECTION	COUNTY	TOTAL SHEETS	SHEET NO.
74	57-17B	MCLEAN	19	6
F.A.R.T. 74		ILLINOIS		FED. AID PROJECT



BILL OF MATERIAL - E BRIDGES

Bar	No.	Size	Length	Splice
#1	132	#10	22'-1"	
#1	66	#10	33'-6"	
#2	128	#10	12'-6"	
#2	64	#10	22'-0"	
#4	108	#11	11'-0"	
#4	108	#11	21'-0"	
#6	100	#5	15'-9"	
#7	54	#5	14'-0"	
b	376	#5	22'-3"	
b	208	#5	21'-6"	
b2	96	#8	23'-0"	
s	160	#5	9'-5"	
s1	160	#5	7'-5"	
u	472	#3	3'-0"	
u1	472	#3	4'-2"	
d	216	#5	2'-9"	
e	32	#5	25'-6"	
r	16	#5	31'-0"	
r1	112	#4	2'-3"	
r1	24	#4	3'-0"	
Class A Concrete		Cu. Yds.	334.1	
Handrail Concrete		Cu. Yds.	2.0	
Reinforcement Bars		Lbs.	32,830	
Structural Steel		Lbs.	20,040	
Name Plates		Each	2	



PROPOSED BRIDGE DECK CONCRETE SEALER

TYPICAL SECTION; FOUR-LANE WITH CURB; DUAL STRUCTURES

Location	E. Brg. NAH: (1)	(2)	(3)	E. Pier: (4)	(5)	(6)	E. Pier: (7)	(8)	E. Brg. L. Abut.		
Theoretical Elevation	755.75	755.78	755.81	755.85	755.88	755.93	756.02	756.10	756.14	756.18	756.22
Theoretical El. + 2' Defl.	755.75	755.80	755.83	755.86	755.88	755.93	756.02	756.07	756.11	756.16	756.20

DESIGNED: Joseph W. Lomic
CHECKED: C. W. Slick
DRAWN: R. W. L. III
CHECKED: C. W. S.

APR 13 1961
EXAMINED: H. E. Bauman
PASSED: [Signature]
APPROVED: R. R. Bauman

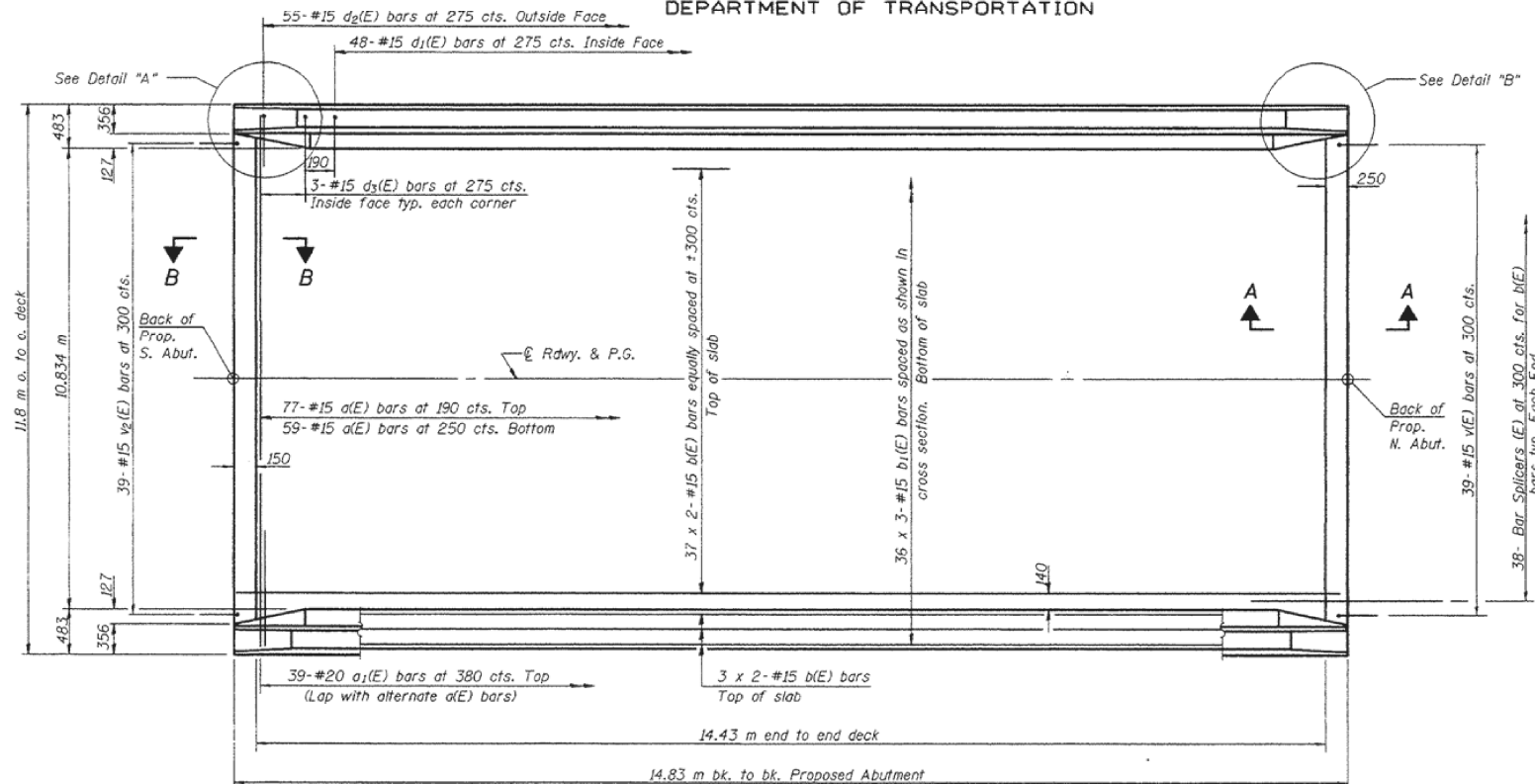
SUPERSTRUCTURE
F.A.R.T. 74 - SEC. 57-17B
MCLEAN COUNTY
STA. 1512+64

Added Long. Bonded Concr. Jt. in Chaint. R. D. 12/12/63.

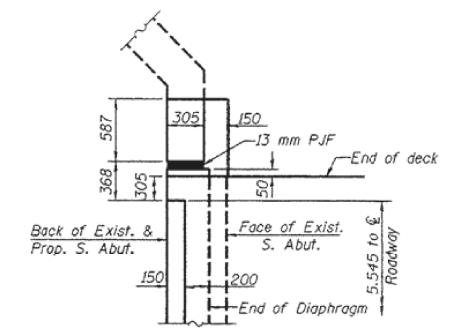
MODEL: 1400ELNAMES
FILE: 1400ELNAMES
C:\Users\brandenburg\Documents\DOT Office\Drawings\Projects\74\7400Data\Hydraulics\740027.dwg

STATE OF ILLINOIS
DEPARTMENT OF TRANSPORTATION

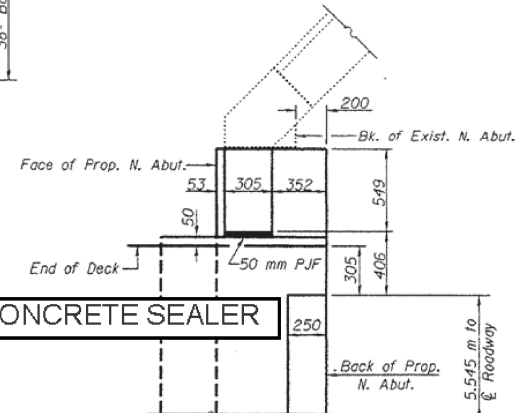
ROUTE NO.	SECTION	COUNTY	TOTAL SHEETS	SHEET NO.
F.A.S. RTE.	FY20 BRIDGE SEALING	VARIOUS	19	9
CONTRACT NO. 70E27				SHEET NO. 3
13 SHEET				90948



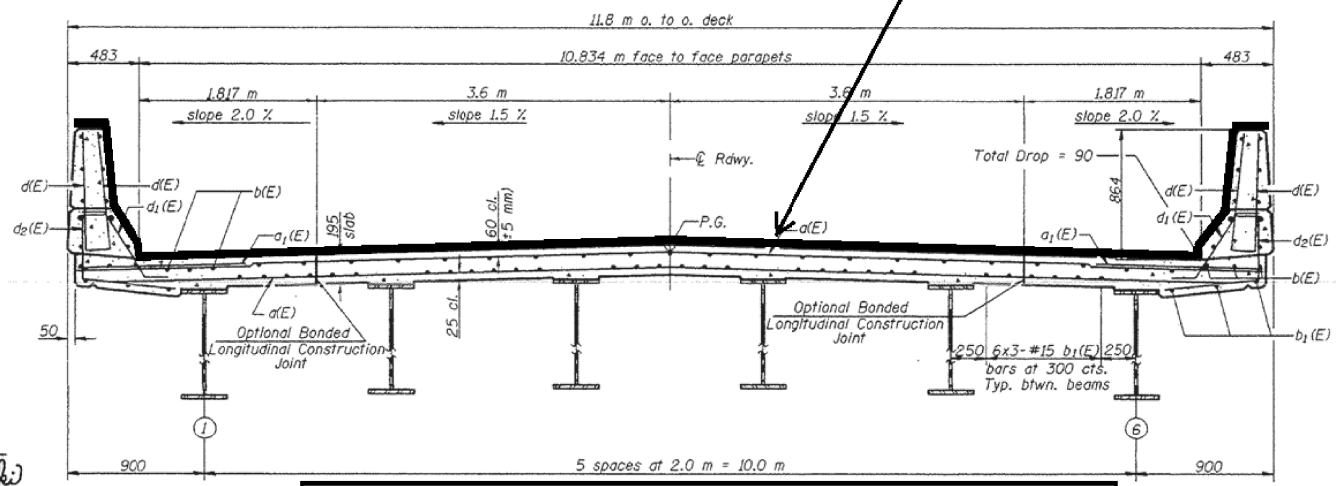
PLAN



DETAIL "A"
Parapet and Approach not shown.



DETAIL "B"
Parapet and Approach not shown.



TYPICAL SECTION; TWO-LANE TWO-WAY WITH PARAPET

CROSS SECTION
(Looking North)

MIN. BAR LAPS
#15 bars = 640

Notes: See Sheet 4 of 13 for superstructure details and Bill of Material.
Reinforcement bars designated (E) shall be epoxy coated.
Bars indicated thus 1 x 3-#15 etc. indicates 1 line of bars with 3 lengths per line.
See Sheet 4 of 13 for parapet reinforcement.
All dimensions are in millimeters (mm) except as noted.
See sheet 12 of 13 for bar splicer details.

SUPERSTRUCTURE
F.A.S. RTE. 1671 SEC. 22BR-1
DOUGLAS COUNTY
STATION 22+618.644
STRUCTURE NO. 021-0011

DESIGNED	Jonas H. Petty	EXAMINED	January 30, 2018
CHECKED	Mark D. Shaffer	PASSED	Thomas J. Domagala
DRAWN	R. Sommer		Ralph E. Anderson
CHECKED	J.D.P./M.D.S.		

MODEL: I:\MODEL\NAME: FILE: I:\NAME: P:\pub\mcom\m.d.a.d\illinois\dot\Documents\DOT\Office\Detail\13\Project\021-0011\021-0011\Hydraulics\021-0011-021-0011.dwg

USER NAME	= brandenburgj	DESIGNED	- TJB	REVISED	-
PLOT SCALE	= 40.0000 "/in.	DRAWN	-	REVISED	-
PLOT DATE	= 6/26/2019	CHECKED	-	REVISED	-
		DATE	- 6/21/2019	REVISED	-

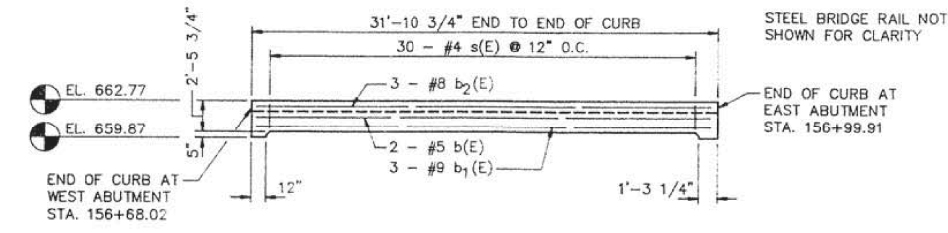
STATE OF ILLINOIS
DEPARTMENT OF TRANSPORTATION

TYPICAL SECTIONS

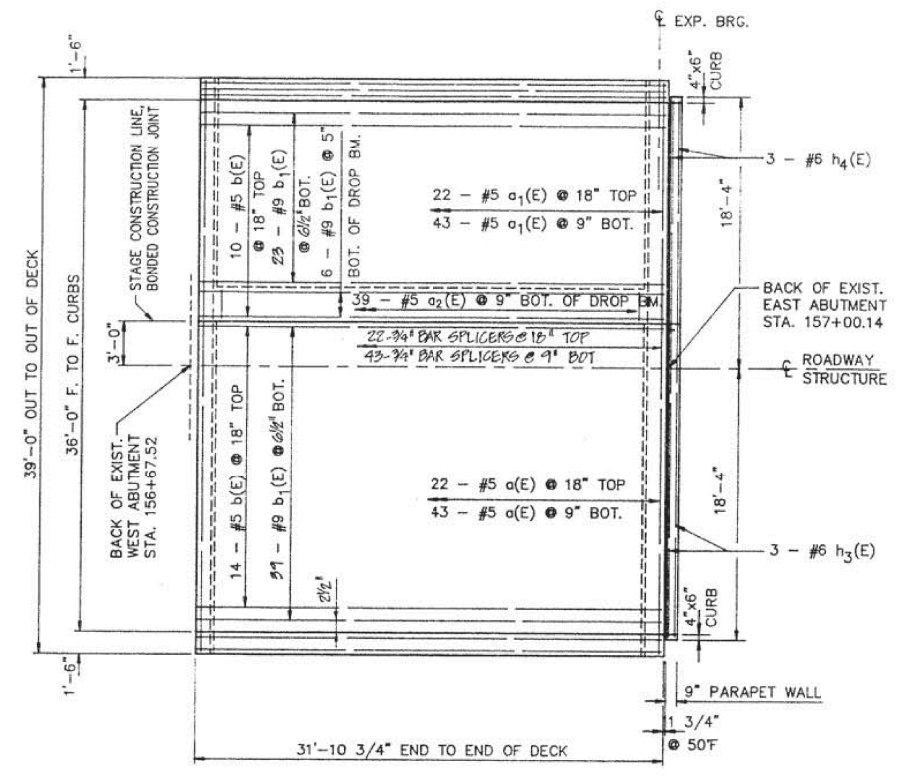
SCALE: SHEET 3 OF 6 SHEETS STA. TO STA.

F.A. RTE.	SECTION	COUNTY	TOTAL SHEETS	SHEET NO.
VAR.	FY20 BRIDGE SEALING	VARIOUS	19	9
CONTRACT NO. 70E27				
ILLINOIS		FED. AID PROJECT		

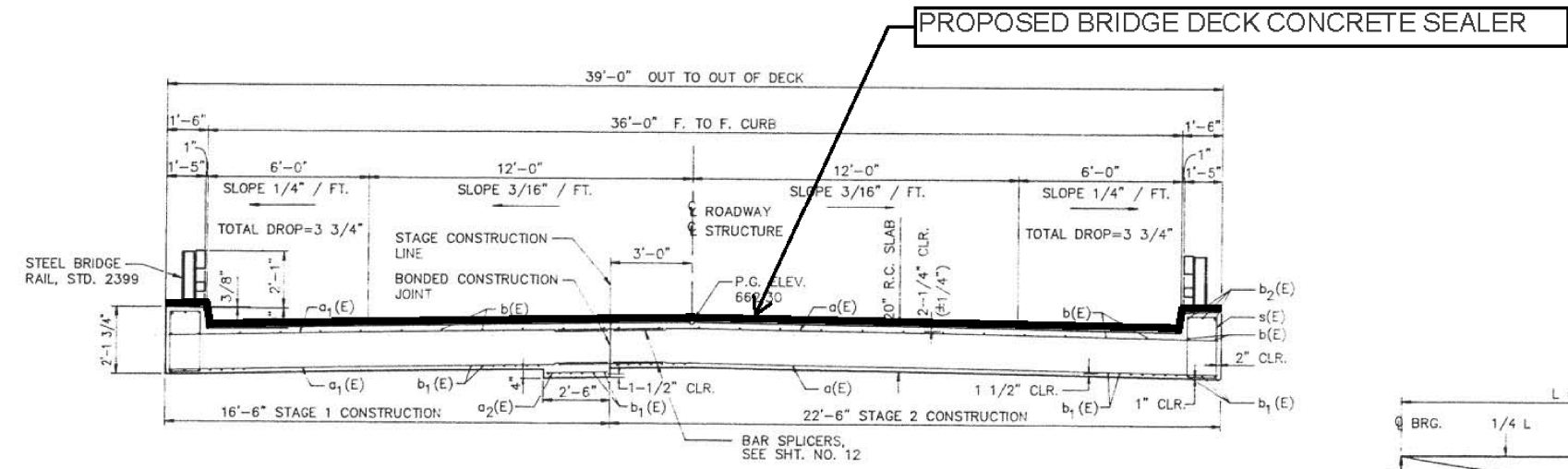
F.A.P. RTE.	SECTION	COUNTY	TOTAL SHEETS	SHEET NO.
79	143 BR-3	DOUGLAS	19	13
F.H.W.A. REG.	ILLINOIS	PROJECT		



ELEVATION OF CURB BEAM
(DIMENSIONS @ OUTSIDE EDGE)

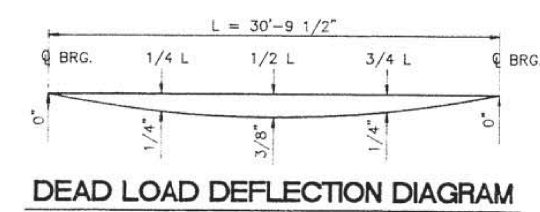


PLAN



CROSS SECTION
LOOKING EAST

TYPICAL SECTION; TWO-LANE TWO-WAY WITH CURB



DEAD LOAD DEFLECTION DIAGRAM

BILL OF MATERIALS SUPERSTRUCTURE

BAR	SIZE	NO. REQ'D	LENGTH	SHAPE
a(E)	#5	67	22'-2"	—
a1(E)	#5	67	16'-2"	—
a2(E)	#5	39	2'-2"	—
a3(E)	#6	6	22'-2"	—
a4(E)	#6	6	16'-2"	—
b(E)	#5	28	31'-7"	—
b1(E)	#9	74	31'-7"	—
b2(E)	#8	6	31'-7"	—
b3(E)	#6	3	21'-0"	—
b4(E)	#6	3	15'-0"	—
s(E)	#4	60	6'-5"	□
s1(E)	#4	42	6'-1"	□
s2(E)	#4	42	5'-2"	□

ITEM	UNIT	QUANTITY
PERFORMED JOINT SEAL 2-1/2"	LIN. FT.	39
CLASS "X" CONCRETE SUPERSTRUCTURE	CU. YD.	84.0
PROTECTIVE COAT	SQ. YD.	22
ELASTOMERIC BEARING ASSEMBLY TYPE I	EACH	7
FURNISHING AND ERECTING STRUCTURAL STEEL	POUND	1822
REINFORCEMENT BARS, EPOXY COATED	POUND	13,220

REINFORCEMENT BARS DESIGNATED (E) SHALL BE EPOXY COATED. SEE SHT. NO. 14 FOR BAR BENDING DETAILS.
SEE SHT. NO. 17 FOR ADDITIONAL PARAPET WALL DETAILS.

SUPERSTRUCTURE

U.S. 36 over Dry Fork Creek
F.A.P. RTE. 79 Section 143 BR-3
Douglas County
Sta. 156+84
Structure Number 021-0017

Drawn **EWING**
Date **4/30/90**
REV. **B/90**

Project No. **18189002**

UPCHURCH AND ASSOCIATES
engineers architects surveyors
MATTOON, IL. 235-3177

REV 10-15-90 BY PLC CHANGED REINFORCEMENT BARS, EPOXY COATED FROM 15,263 TO 13,220 POUNDS

USER NAME = brandenburgjt	DESIGNED - TJB	REVISED -
	DRAWN -	REVISED -
PLOT SCALE = 40.0000' / in.	CHECKED -	REVISED -
PLOT DATE = 6/26/2019	DATE - 6/21/2019	REVISED -

STATE OF ILLINOIS
DEPARTMENT OF TRANSPORTATION

TYPICAL SECTIONS

SCALE: SHEET 4 OF 6 SHEETS STA. TO STA.

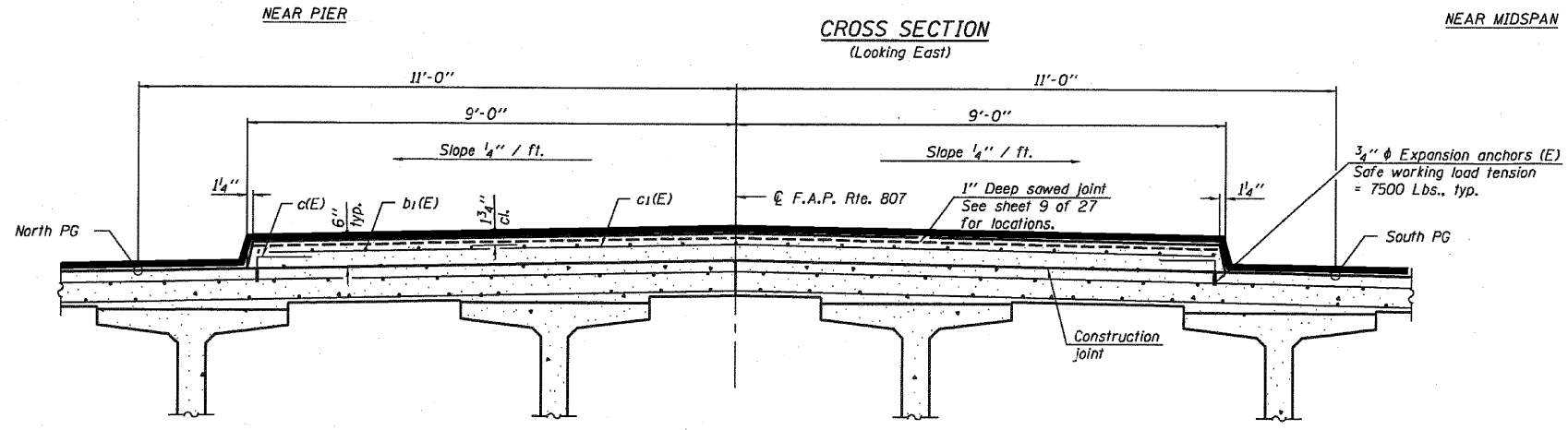
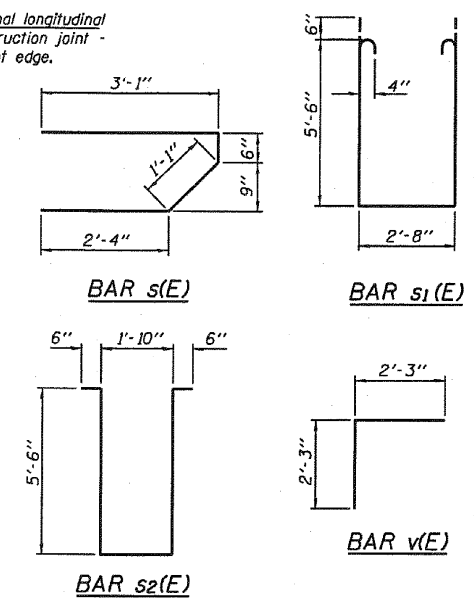
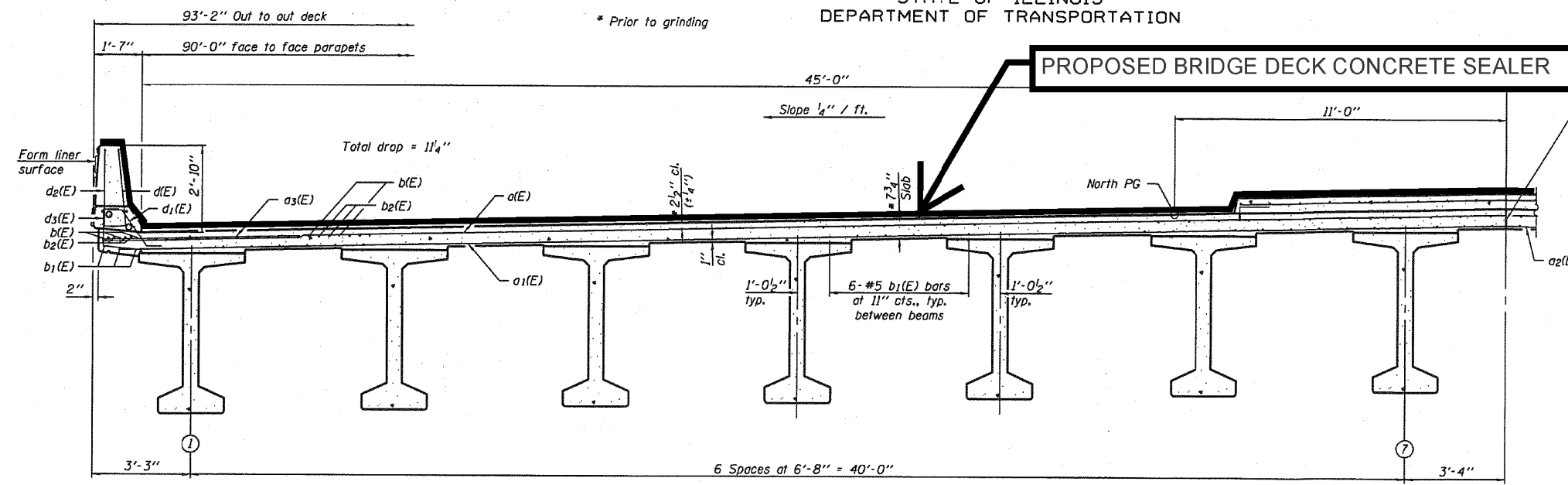
F.A. RTE.	SECTION	COUNTY	TOTAL SHEETS	SHEET NO.
VAR.	FY20 BRIDGE DECK SEALING	VARIOUS	19	10
			CONTRACT NO. 70E27	
		ILLINOIS	FED. AID PROJECT	

MODEL: S:\MODEL\MATTS FILE: MATTS: P:\pub\mcom\da\data\links\pwr\pwr\DOT\Documents\DOT_Offices\DOT\70E27\CADDData\Hydraulics\DOT70E27-hb-draw1k.dgn

STATE OF ILLINOIS
DEPARTMENT OF TRANSPORTATION

ROUTE NO.	SECTION	COUNTY	TOTAL SHEETS	SHEET NO.	SHEET NO.
F.A.I. 57	10-32HB-3,K	CHAMPAIGN	352	119	27 SHEETS
FED. ROAD DIST. NO. 7	ILLINOIS	FED. AID PROJECT			

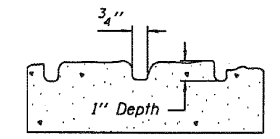
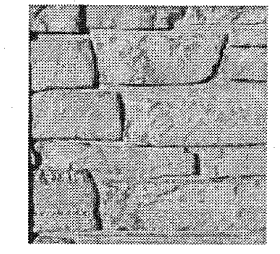
Contract #90758



TYPICAL SECTION WITH MEDIAN

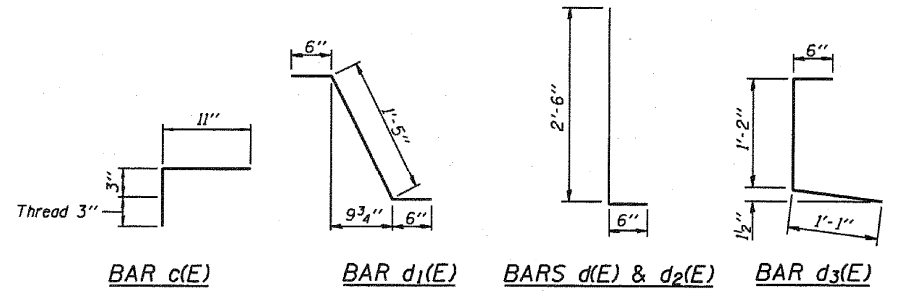
SECTION THRU MEDIAN
(Looking East)

Notes:
See sheet 11 of 27 for additional superstructure details and Bill of Material.
For diaphragm details, see sheets 12 and 13 of 27.
Reinforcement bars designated (E) shall be epoxy coated.
Bars indicated thus 20 x 3-#5 etc. indicates 20 lines of bars with 3 lengths per line.
See sheet 11 of 27 for parapet reinforcement.
Limestone Form Liner Textured Surface to be used on outside face of parapet. Utilize Teton Dry Stack (Scott system #189) or equivalent.
The depth of relief of the Form Liner Textured Surface is limited to 1". The relief should not compromise the reinforcement clearance in the parapet.
Cost of expansion anchors (E) included in the cost of Reinforcement Bars, Epoxy Coated.



FORM LINER TEXTURE DETAIL
See Special Provisions.

SUPERSTRUCTURE DETAILS
F.A.I. ROUTE 57 SEC. 10-32HB-3,K
CHAMPAIGN COUNTY
STATION 297+20.45
STRUCTURE NO. 010-0272



DESIGNED	Gholam R. Ahanchi
CHECKED	Rebecca L. Thorp
DRAWN	Michael B. Mossman
CHECKED	G.R.A. / R.L.T.

April 28, 2006
EXAMINED *Thomas J. Donagalli*
PASSED *Ralph E. Anderson*
ENGINEER OF BRIDGES AND STRUCTURES

USER NAME = brandenburgjt	DESIGNED - TJB	REVISED -
PLOT SCALE = 40,0000 ' / in.	CHECKED -	REVISED -
PLOT DATE = 6/26/2019	DATE - 6/21/2019	REVISED -

STATE OF ILLINOIS
DEPARTMENT OF TRANSPORTATION

TYPICAL SECTIONS

SCALE: SHEET 5 OF 6 SHEETS STA. TO STA.

F.A. RTE.	SECTION	COUNTY	TOTAL SHEETS	SHEET NO.
VAR. FY20 BRIDGE DECK SEALING	VARIOUS	ILLINOIS	19	11
CONTRACT NO. 70E27				

MODEL: S:\MODEL\MAR15... FILE NAME: P:\pub\mossman\adad\illinois\pwr\DOT\Documents\DOT - Office\Drawings\Projects\0570E27\CADDData\Hydraulics\0570E27-ah-detailed.dgn

CHAMPAIGN COUNTY STRUCTURES SCHEDULE OF QUANTITIES

ACTUAL MEASUREMENTS

SN	ROUTE CARRIED	FEATURE CROSSED	SIMS		LENGTH (E -E)	WIDTH (F-F)	AREA (SQ FT)	LENGTH (FT)	APPROACH SLABS				PARAPETS (HUB, FACE & TOP)			TYPE B CURB (FACE & TOP)			TOTAL (SQ FT)	RURAL	URBAN	FIELD MEASURED		
			LENGTH	WIDTH					DIMENSIONS INSIDE PARAPET / CURB		DIMENSIONS BEYOND PARAPET / CURB		AREA (SQ FT)	HEIGHT	LENGTH (FT)		AREA (SQ FT)	HEIGHT					LENGTH	AREA (SQ FT)
									LENGTH	WIDTH	LENGTH	WIDTH			3.6 FT TYPICAL	ALONG DECK								
010-0236	ILL 49(FAP 836)	STREAM	76.0	33.0	75.0	33.0	2475.0	0.0	0	0.0	0.0	0.0	0.0	0.00	0.0	0.0	0.0	0.00	0.0	0.0	2475.0	X		
010-0239	FAP 326 (IL 47)	STREAM	110.3	40.5	109.3	37.3	4076.9	20.0	0	0.0	20.0	38.5	770.0	3.60	109.3	0.0	787.0	0.00	0.0	0.0	5634.0	X		
010-0240	CH 16(FAS 526)	E BR EMBARRAS RIVER	114.0	33.2	113.0	30.0	3390.0	33.0	0	0.0	33.0	34.2	2257.2	3.60	113.0	0.0	813.6	0.00	0.0	0.0	6461.0	X		
010-0244	FAS 522(CH 12)	DITCH	32.0	33.2	31.5	30.0	945.0	20.0	0	0.0	20.0	31.2	1248.0	3.60	31.5	0.0	226.8	0.00	0.0	0.0	2420.0	X		
010-0250	FAS 525(CH 16)	E BR EMBARRAS RIVER	127.0	32.3	126.0	32.3	4069.8	32.4	0	0.0	32.4	30.0	1944.0	0.00	0.0	0.0	0.0	0.00	0.0	0.0	6014.0	X		
010-0252	FAP 709 (US 136)	SALT FORK VERMILION	80.0	35.2	82.0	32.0	2624.0	24.3	0	0.0	24.3	33.2	1613.5	3.60	82.0	0.0	590.4	0.00	0.0	0.0	4828.0	X		
010-0254	FAP 813 (OLYMPIAN DRIVE)	I-57	271.7	93.2	270.8	91.0	24642.8	50.0	12	92.2	38.0	72.2	7700.0	3.60	270.8	0.0	1949.8	0.75	12.0	36.0	34329.0		X	
010-0262	IL 54	SANG. RIVER	152.7	35.2	151.7	32.0	4854.4	23.4	12	33.2	11.4	24.0	1344.0	3.60	151.7	0.0	1092.2	0.75	11.4	34.2	7325.0	X		
010-0267	FAU 7123(IL 10)	KASKASKIA RIVER	65.0	39.2	64.0	36.0	2304.0	20.0	5	37.2	15.0	38.2	1518.0	3.60	64.0	0.0	460.8	0.75	5.0	15.0	4298.0		X	
010-0268	FAP 836(IL 49)	STREAM	50.0	35.2	49.0	32.0	1568.0	20.0	20	33.2	0.0	0.0	1328.0	3.60	49.0	0.0	352.8	0.75	20.0	60.0	3309.0	X		
010-0272	CURTIS RD	I-57	220.0	93.2	219.0	91.0	19929.0	30.0	30	91.0	0.0	0.0	5460.0	3.60	219.0	30.0	2008.8	0.00	0.0	0.0	27398.0		X	
010-0275	ILL 10(FAS 1513)	CAMP CREEK	135.0	35.2	134.0	32.0	4288.0	30.0	11.5	32.0	18.5	33.2	1964.4	3.60	134.0	11.5	1130.4	0.75	18.5	55.5	7439.0	X		
010-0276	FAP 709 (US 136)	BIG DITCH	82.0	39.2	81.0	36.0	2916.0	30.0	0	0.0	30.0	37.3	2238.0	3.60	81.0	0.0	583.2	0.75	30.0	90.0	5828.0	X		
010-0277	FAS 518 (CH 22)	I-74	219.0	43.2	219.0	40.0	8760.0	30.0	0	0.0	30.0	41.2	2472.0	3.60	219.0	0.0	1576.8	0.75	30.0	90.0	12899.0	X		
010-0280	ILL 49 (FAP 836)	SALT FORK	350.0	39.2	350.0	36.0	12600.0	30.0	0	0.0	30.0	37.3	2238.0	3.60	350.0	0.0	2520.0	0.75	30.0	90.0	17448.0	X		
010-0281	FAP 326 (IL 47)	SANGAMON RIVER	215.0	39.2	215.0	36.0	7740.0	30.0	0	0.0	30.0	37.3	2238.0	3.60	215.0	0.0	1548.0	0.75	30.0	90.0	11616.0	X		
010-0283	FAP 709 (US 136)	WILDCAT SLOUGH	136.1	35.2	135.1	32.0	4323.2	30.0	15	32.0	15.0	33.2	1956.0	3.60	135.1	15.0	1188.7	0.75	15.0	45.0	7513.0	X		
010-0284	IL 49 (FAP 836)	LITTLE VERMILION RIV	110.0	35.2	110.0	32.0	3520.0	30.0	0	0.0	30.0	31.2	1872.0	3.60	110.0	0.0	792.0	0.75	30.0	90.0	6274.0	X		
010-0285	CH 24	FAI 57	220.0	31.2	222.0	28.0	6216.0	30.0	15	28.0	15.0	28.9	1707.0	3.60	222.0	15.0	1814.4	0.75	15.0	45.0	9783.0	X		
010-0286	FAP 808 (IL 130)	E BR EMBARRAS RIVER	122.0	39.2	121.0	36.0	4356.0	30.0	15	36.0	15.0	36.9	2187.0	3.60	121.0	15.0	1087.2	0.75	15.0	45.0	7676.0	X		
010-0287	FAP 326 (IL 47)	SANGAMON RIVER	380.0	43.6	380.0	41.8	15865.0	30.0	30	41.8	0.0	0.0	2505.0	3.10	380.0	30.0	2728.0	0.00	0.0	0.0	21098.0		X	
010-0288	TR 230	I-74	222.0	31.2	222.0	28.0	6216.0	30.0	15	28.0	15.0	29.2	1716.0	3.60	222.0	15.0	1814.4	0.75	15.0	45.0	9792.0	X		
010-0289	CH 50	FAI 74	257.9	46.0	327.6	49.1	16085.2	30.0	30	49.1	0.0	0.0	2946.0	3.40	327.6	30.0	2635.7	0.00	0.0	0.0	21667.0		X	
010-0291	WINDSOR RD	I-57	215.0	48.0	215.0	47.3	10169.5	30.0	30	47.3	0.0	0.0	2838.0	3.33	215.0	15.0	1631.7	0.00	0.0	0.0	14640.0		X	
010-0294	BRADLEY AVE	I-57	250.0	48.0	250.0	47.3	11825.0	30.0	30	47.3	0.0	0.0	2838.0	3.33	250.0	15.0	1864.8	0.00	0.0	0.0	16528.0		X	
010-2018	IL 130 (FAP 808)	DRAINAGE DITCH	32.4	46.0	34.7	44.0	1526.8	12.0	0	0.0	12.0	46.0	1104.0	1.50	34.7	0.0	104.1	0.00	12.0	0.0	2735.0		X	
010-2019	FAP 709 (US 136)	STREAM	22.9	34.0	22.9	32.0	732.8	30.0	15	32.0	15.0	24.0	1680.0	1.50	22.9	15.0	158.7	0.00	15.0	0.0	2572.0	X		
010-2027	FAP 326 (IL 47)	CAMP CREEK	37.1	68.7	36.0	35.0	1260.0	30.0	0	35.0	30.0	35.0	2100.0	2.40	36.0	0.0	172.8	0.00	30.0	0.0	3533.0	X		

97 SN's 010-0016, 0017 & 0040 HAVE HIGH FRICTION SURFACE TREATMENT ON DECKS AND APPROACHES; APPLY SEALER TO PARAPETS ONLY

TOTALS (SQ FT) 970,786 390,722 580,064

AS-BUILT CORRECTIONS FROM 70C72 IN 2018 AS FIELD MEASURED; NO AS-BUILT CORRECTIONS FROM CONTRACTS 70979 IN 2016 OR 70B94 IN 2017

EST. WD'S (80,000 SQ FT/DAY) 12 5 7

MODEL: I:\MODEL\MHFE FILE: MHFE_Plan\Illumination\Illumination\DOT Documents\DOT Office\Drawings\70E27\CADDData\Hydraulics\70E27-ahs-schedule.dgn

USER NAME = brandenburgtj	DESIGNED - TJB	REVISED -
	DRAWN -	REVISED -
PLOT SCALE = 40.0000 ' / in.	CHECKED -	REVISED -
PLOT DATE = 6/26/2019	DATE - 6/21/2019	REVISED -

**STATE OF ILLINOIS
DEPARTMENT OF TRANSPORTATION**

**CHAMPAIGN COUNTY
SCHEDULE OF QUANTITIES**

SCALE: SHEET 3 OF 6 SHEETS STA. TO STA.

F.A. RTE.	SECTION	COUNTY	TOTAL SHEETS	SHEET NO.
VAR.	FY20 BRIDGE DECK SEALING	VARIOUS	19	15
CONTRACT NO. 70E27				
ILLINOIS		FED. AID PROJECT		

CHAMPAIGN COUNTY STRUCTURES SCHEDULE OF QUANTITIES

			TRAFFIC CONTROL & PROTECTION					PROSECUTION & PROGRESS		RURAL	URBAN								
SN	ROUTE CARRIED	FEATURE CROSSED	701201	701411 (DL ONLY)	701426 SPECIAL	701446	D5 DETAIL 70200000 ROAD CLOSURE	LOCATION	SUMMARY			CHANGEABLE MESSAGE SIGN (Calendar Days)	WORKING DAYS	PROSECUTION					
010-0200	I-57(SB)	IC RR & TR 132		2	2			C1	2 - 701411; 4 - 701426 SPECIAL; 2 SN	2 - CMS ON FAI 57 NB & SB AT COUNTY LINES; 2 - CMS ON FAI 74 & FAI 72 WEST & EAST OF FAI 57; 7 CAL. DAYS PRIOR; TOTAL 42 CAL. DAYS	0.5	1 HRS PER LANE; 4 HRS	X						
010-0201	I-57(NB)	IC RR & TR 132		1	2			C1			0.5	1 HRS PER LANE; 4 HRS	X						
010-0001	I-57(SB)	N&S RR			2			C2	4 - 701426 SPECIAL; 2 SN		0.5	1 HRS PER LANE; 4 HRS	X						
010-0002	I-57(NB)	N&S RR			2			C2			0.5	1 HRS PER LANE; 4 HRS	X						
010-0005	I-57(SB)	PHINNEY BRANCH			1			C3	1 - 701411; 4 - 701426 SPECIAL; 6 SN		2 - CMS ON FAI 57 NB & SB AT COUNTY LINES; 2 - CMS ON FAI 74 & FAI 72 WEST & EAST OF FAI 57; 7 CAL. DAYS PRIOR; TOTAL 42 CAL. DAYS	1	2 HRS PER LANE; 8 HRS		X				
010-0006	I-57(NB)	PHINNEY BRANCH			1														X
010-0007	I-57(SB)	COPPER SLOUGH			1														X
010-0008	I-57(NB)	COPPER SLOUGH			1														X
010-0009	I-57(NB)	ILL 10 & IC RR				INCL.		C4	3 - 701411; 4 - 701426 SPECIAL; 4 SN		2 - CMS ON FAI 74 WB & EB AT COUNTY LINES; 2 - CMS ON FAI 57 NORTH & SOUTH OF FAI 74; 7 CAL. DAYS PRIOR; TOTAL 28 CAL. DAYS	1	2 HRS PER LANE; 8 HRS		X				
010-0010	I-57(SB)	ILL 10 & IC RR		1	INCL.														X
010-0012	I-57(SB)	US 136(FAP 709)			1													X	
010-0013	I-57(NB)	US 136(FAP 709)		1	1			C5	4 - 701411; 4 - 701426 SPECIAL; 4 SN	2 - CMS ON FAI 74 WB & EB AT COUNTY LINES; 2 - CMS ON FAI 57 NORTH & SOUTH OF FAI 74; 7 CAL. DAYS PRIOR; TOTAL 28 CAL. DAYS	1	2 HRS PER LANE; 8 HRS		X					
010-0191	I-57(NB)	IC RR		1	1													X	
010-0192	I-57(SB)	IC RR		1	1			C6	NIGHTTIME CLOSURE: 6 - 701411; 6 - 701426 SPECIAL; 3 SN	2 - CMS ON FAI 74 WB & EB AT COUNTY LINES; 2 - CMS ON FAI 57 NORTH & SOUTH OF FAI 74; 7 CAL. DAYS PRIOR; TOTAL 28 CAL. DAYS	1	2 HRS PER LANE; 12 HRS		X					
010-0014	I-74(WB)	IL 47		1	1													X	
010-0015	I-74(EB)	IL 47		1	1													X	
010-0016	I-74(EB)	SANGAMON RIVER		1	1			C7	1 - 701411; 4 - 701426 SPECIAL; 4 SN	2 - CMS ON FAI 74 WB & EB AT COUNTY LINES; 2 - CMS ON FAI 57 NORTH & SOUTH OF FAI 74; 7 CAL. DAYS PRIOR; TOTAL 28 CAL. DAYS	1	2 HRS PER LANE; 8 HRS		X					
010-0017	I-74(WB)	SANGAMON RIVER		1	1													X	
010-0022	I-74(WB)	W FORK SALINE BRANCH		1	2			C7	1 - 701411; 4 - 701426 SPECIAL; 4 SN	2 - CMS ON FAI 74 WB & EB AT COUNTY LINES; 2 - CMS ON FAI 57 NORTH & SOUTH OF FAI 74; 7 CAL. DAYS PRIOR; TOTAL 28 CAL. DAYS	1	2 HRS PER LANE; 8 HRS		X					
010-0023	I-74(EB)	W FORK SALINE BRANCH		1	2													X	
010-0024	I-74	US 45(FAP 800)		4	2			C7	1 - 701411; 4 - 701426 SPECIAL; 4 SN	2 - CMS ON FAI 74 WB & EB AT COUNTY LINES; 2 - CMS ON FAI 57 NORTH & SOUTH OF FAI 74; 7 CAL. DAYS PRIOR; TOTAL 28 CAL. DAYS	1	2 HRS PER LANE; 8 HRS		X					
010-0027	I-74(WB)	SALINE DRAIN DITCH			1													X	
010-0028	I-74(EB)	SALINE DRAIN DITCH			1													X	
010-0029	I-74(WB)	SALT FORK RIVER		1	1			C7	1 - 701411; 4 - 701426 SPECIAL; 4 SN	2 - CMS ON FAI 74 WB & EB AT COUNTY LINES; 2 - CMS ON FAI 57 NORTH & SOUTH OF FAI 74; 7 CAL. DAYS PRIOR; TOTAL 28 CAL. DAYS	1	2 HRS PER LANE; 8 HRS		X					
010-0030	I-74(EB)	SALT FORK RIVER			1													X	

TC&P SET-UPS & CMS CALENDAR DAYS	0	18	30	0	0
WORKING DAYS PER STANDARD		5	6		

70	6
USE AT RE'S DIRECTION	

MODEL: \\MODEL\MHFE
FILE: \\MAILS: \pub\hmc\com\ad\illinois\gov\PI\DOT\Documents\DOT_Offices\Illinet\5\Projects\0570E27\CADD\Drawings\Hydraulics\0570E27-rtb-schedule.dgn

USER NAME = brandenburgtj	DESIGNED - TJB	REVISED -
	DRAWN -	REVISED -
PLOT SCALE = 40,0000 ' / in.	CHECKED -	REVISED -
PLOT DATE = 6/26/2019	DATE - 6/21/2019	REVISED -

**STATE OF ILLINOIS
DEPARTMENT OF TRANSPORTATION**

CHAMPAIGN COUNTY SCHEDULE OF QUANTITIES			
SCALE:	SHEET 4	OF 6 SHEETS	STA. TO STA.

F.A. RTE.	SECTION	COUNTY	TOTAL SHEETS	SHEET NO.
VAR.	FY20 BRIDGE DECK SEALING	VARIOUS	19	16
			CONTRACT NO. 70E27	
		ILLINOIS	FED. AID PROJECT	

CHAMPAIGN COUNTY STRUCTURES SCHEDULE OF QUANTITIES

			TRAFFIC CONTROL & PROTECTION					PROSECUTION & PROGRESS		RURAL	URBAN			
SN	ROUTE CARRIED	FEATURE CROSSED	701201	701411 (DL ONLY)	701501	701427 SPECIAL	D5 DETAIL 70200000 ROAD CLOSURE	LOCATION	SUMMARY	CHANGEABLE MESSAGE SIGN (Calendar Days)	WORKING DAYS	PROSECUTION		
010-0240	CH 16(FAS 526)	E BR EMBARRAS RIVER	2					C8	8 - 701201; 4 SN	NOT APPLICABLE	1	2 HRS PER STRUCTURE; 8 HRS	X	
010-0244	FAS 522(CH 12)	DITCH	2				X							
010-0250	FAS 525(CH 16)	E BR EMBARRAS RIVER	2				X							
010-0286	FAP 808 (IL 130)	E BR EMBARRAS RIVER	2				X							
010-0236	ILL 49(FAP 836)	STREAM	2					C9	8 - 701201; 4 SN	NOT APPLICABLE	1	2 HRS PER STRUCTURE; 8 HRS	X	
010-0284	IL 49 (FAP 836)	LITTLE VERMILION RIV	2				X							
010-0268	FAP 836(IL 49)	STREAM	2				X							
010-0280	ILL 49 (FAP 836)	SALT FORK	2				X							
010-0145	TR 297 B	I-57				1		C10	2 - 701201; 4 - ROAD CLOSURES; 5 SN	NOT APPLICABLE	1	2 HRS PER STRUCTURE; 10 HRS	X	
010-0179	TR 251	I-57				1	X							
010-0181	TR 283	I-57				1	X							
010-0105	TR 225	I-57				1							X	
010-0128	CH 18(FAS 531)	I-57	2											
010-0272	CURTIS RD	I-57				4		C11	4 - 701601; 6 - 701501; 4 SN	NOT APPLICABLE	1	1 HRS PER LANE; 10 HRS		X
010-0291	WINDSOR RD	I-57			2								X	
010-0103	FAU 7138 (KIRBY)	I-57			2								X	
010-0294	BRADLEY AVE	I-57			2								X	
010-0170	DUNCAN RD(FAU 7155)	FAP 725			2			C12	2 - 701501; 2 - 701201; 2 - ROAD CLOSURES; 4 SN	NOT APPLICABLE	1	2 HRS PER STRUCTURE; 10 HRS		X
010-0146	MARKET ST (CH 19)	I-72	2				X							
010-0160	TR 26	I-72				1							X	
010-0166	TR 94	I-72				1							X	
010-0267	FAU 7123(IL 10)	KASKASKIA RIVER	2					C13	4 - 701501; 6 - 701201; 5 SN	NOT APPLICABLE	1	2 HRS PER STRUCTURE; 10 HRS		X
010-0275	ILL 10(FAS 1513)	CAMP CREEK	2				X							
010-2027	FAP 326 (IL 47)	CAMP CREEK	2				X							
010-0287	FAP 326 (IL 47)	SANGAMON RIVER			2								X	
010-0235	US 150(FAS 1518)	SANGAMON RIVER			2									
010-0207	TR 10	I-74				1		C14	2 - 701501; 4 - 701601; 5 - ROAD CLOSURES; 7 SN	NOT APPLICABLE	1	2 HRS PER STRUCTURE; 10 HRS		X
010-0208	TR 30C	I-74				1							X	
010-0209	CROWLEY RD	I-74				1							X	
010-0289	CH 50	FAI 74			2								X	
010-0159	CH 50 (PRAIRIE VIEW RD)	I-74			4								X	
010-0167	TR 104	I-74				1							X	
010-0169	FAP 813	I-74				1							X	

MODEL: \\MODEL\MHFE
FILE: \\MAILS: \pub\henneman\ad\illinois\gov\HWIDOT\Documents\DOT_Offices\IDirect_5\Projects\0570E27\CADDData\Hydraulics\0570E27-ahb-schedule.dgn

USER NAME = brandenburgjt	DESIGNED - TJB	REVISED -
	DRAWN -	REVISED -
PLOT SCALE = 40,0000 ' / in.	CHECKED -	REVISED -
PLOT DATE = 6/26/2019	DATE - 6/21/2019	REVISED -

**STATE OF ILLINOIS
DEPARTMENT OF TRANSPORTATION**

**CHAMPAIGN COUNTY
SCHEDULE OF QUANTITIES**

SCALE: SHEET 5 OF 6 SHEETS STA. TO STA.

F.A. RTE.	SECTION	COUNTY	TOTAL SHEETS	SHEET NO.
VAR.	FY20 BRIDGE DECK SEALING	VARIOUS	19	17
			CONTRACT NO. 70E27	
		ILLINOIS	FED. AID PROJECT	

CHAMPAIGN COUNTY STRUCTURES SCHEDULE OF QUANTITIES

			TRAFFIC CONTROL & PROTECTION					PROSECUTION & PROGRESS		RURAL	URBAN								
SN	ROUTE CARRIED	FEATURE CROSSED	701201	701411 (DL ONLY)	701501	701427 SPECIAL	D5 DETAIL 70200000 ROAD CLOSURE	LOCATION	SUMMARY			CHANGEABLE MESSAGE SIGN (Calendar Days)	WORKING DAYS	PROSECUTION					
010-0186	FAP804 (PROSPECT AVE)	I-74				4		C15	16 - 701601; 4 SN		2	1 HRS PER LANE; 16 HRS		X					
010-0132	NEIL ST (FAU 7166)	I-74				4													X
010-0158	FAU7177 (LINCOLN)	I-74				4													X
010-0033	I-74 RAMP 17.79&17.17	I-74 & RMP 17.17				4													X
010-0173	TR 173 (FAU 7110)	I-74			2			C16	2 - 701501; 2 - 701201; 2 - ROAD CLOSURES; 4 SN		1	2 HRS PER STRUCTURE; 8 HRS		X					
010-0177	FAU 7206	I-74					1												X
010-0288	TR 230	I-74					1											X	
010-0285	CH 24	FAI 57	2											X					
010-0180	TR 258	I-74					1	C17	2 - 701201; 3 - ROAD CLOSURES; 4 SN		1	2 HRS PER STRUCTURE; 8 HRS		X					
010-0182	TR 296	I-74					1												X
010-0183	TR 312	I-74					1											X	
010-0277	FAS 518 (CH 22)	I-74	2											X					
010-0039	US 150 (FAS 1512)	SALINE BRANCH	2					C18	10 - 701201; 5 SN		1	2 HRS PER STRUCTURE; 10 HRS		X					
010-0040	US 150 (FAS 1512)	UP & CNRL RR TR 199A	2																X
010-0220	CH 12 (FAS 516)	SALT FORK RIVER	2															X	
010-0221	CH 12 (FAS 516)	UPPER SALT FORK DIT	2															X	
010-2018	IL 130 (FAP 808)	DRAINAGE DITCH	2											X					
010-0171	TR 146	I-57					1	C19	2 - 701201; 4 - 701601; 2 - ROAD CLOSURES; 4 SN		1	2 HRS PER STRUCTURE; 8 HRS		X					
010-0254	FAP 813 (OLYMPIAN DRIVE)	I-57				4												X	
010-0172	TR 170	I-57					1											X	
010-0185	MARKET ST (FAS533)	I-57	2											X					
010-0163	TR 45	I-57					1	C20	7 - ROAD CLOSURES; 7 SN		1	1 HRS PER STRUCTURE; 7 HRS		X					
010-0164	TR 59	I-57					1												X
010-0165	TR 83	I-57					1												X
010-0082	FAS 516 (ELM ST)	I-57					1											X	
010-0161	TR 35	I-57					1											X	
010-0162	TR 37 A	I-57					1											X	
010-0189	TR 27	I-57					1											X	
010-0212	FAP 709 (US 136)	OWL CREEK	2					C21	12 - 701201; 6 SN		1	2 HRS PER STRUCTURE; 12 HRS		X					
010-0214	FAP 709 (US 136)	SANGAMON RIVER	2															X	
010-0252	FAP 709 (US 136)	SALT FORK VERMILION	2															X	
010-0276	FAP 709 (US 136)	BIG DITCH	2															X	
010-0283	FAP 709 (US 136)	WILDCAT SLOUGH	2															X	
010-2019	FAP 709 (US 136)	STREAM	2										X						
010-0053	FAP 326 (IL 47)	STREAM	2					C22	10 - 701201; 5 SN		1	2 HRS PER STRUCTURE; 10 HRS		X					
010-0239	FAP 326 (IL 47)	STREAM	2															X	
010-0281	FAP 326 (IL 47)	SANGAMON RIVER	2															X	
010-0058	FAP 709 (US 136)	LONE TREE CREEK	2															X	
010-0262	IL 54	SANG. RIVER	2										X						

TC & P SET-UPS and CMS CALENDAR DAYS	64	0	16	28	25
WORKING DAYS PER STANDARD	8		2	2	4

0	16
---	----

MODEL: \\MODEL\MHFS
FILE: \\MHFS_Plan\champaign\dot\Documents\DOT_Offices\IDatct_5\Projects\0570E27\CaddData\Hydraulics\0570E27-rhs-schedule.dgn

USER NAME = brandenburgj	DESIGNED - TJB	REVISED -
	DRAWN -	REVISED -
PLOT SCALE = 40.0000 ' / in.	CHECKED -	REVISED -
PLOT DATE = 6/26/2019	DATE - 6/21/2019	REVISED -

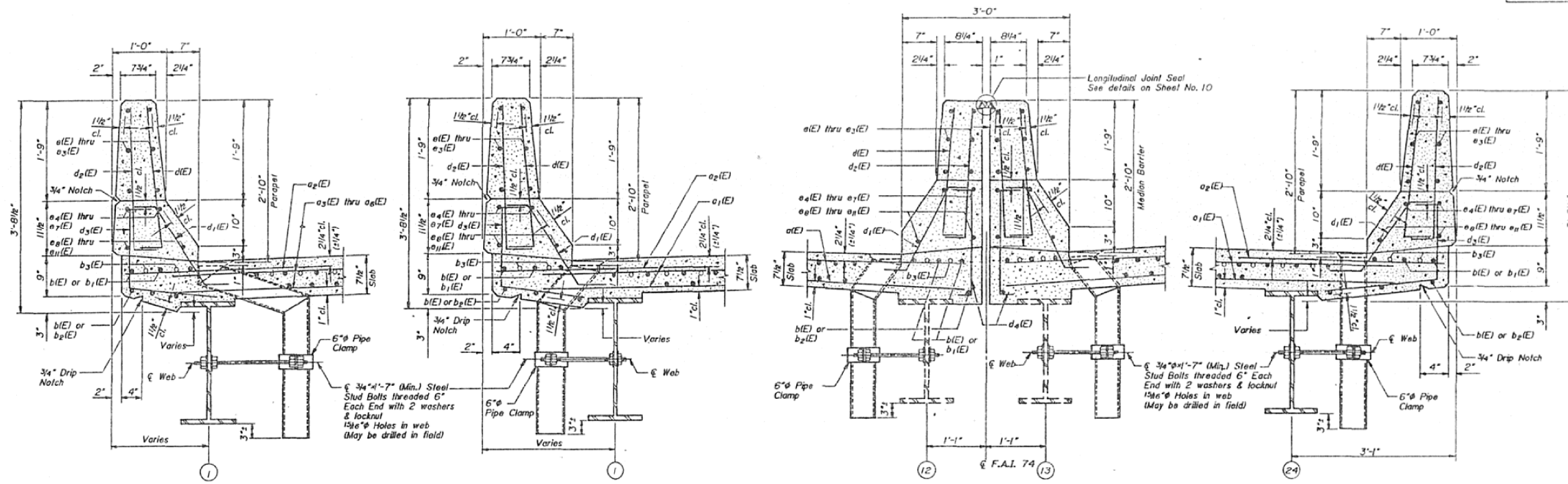
**STATE OF ILLINOIS
DEPARTMENT OF TRANSPORTATION**

CHAMPAIGN COUNTY SCHEDULE OF QUANTITIES			
SCALE:	SHEET 6	OF 6 SHEETS	STA. TO STA.

F.A. RTE.	SECTION	COUNTY	TOTAL SHEETS	SHEET NO.
VAR.	FY20 BRIDGE DECK SEALING	VARIOUS	19	18
CONTRACT NO. 70E27				
ILLINOIS		FED. AID PROJECT		

STATE OF ILLINOIS
DEPARTMENT OF TRANSPORTATION

ROUTE NO.	SECTION	COUNTY	TOTAL SHEETS	SHEET NO.	SHEET NO. B
F.A.I. 74	04HB-2BR	CHAMPAIGN	140	66	SHEET 23
FED. ROAD DIST. NO. 7	ILLINOIS PROJECT				



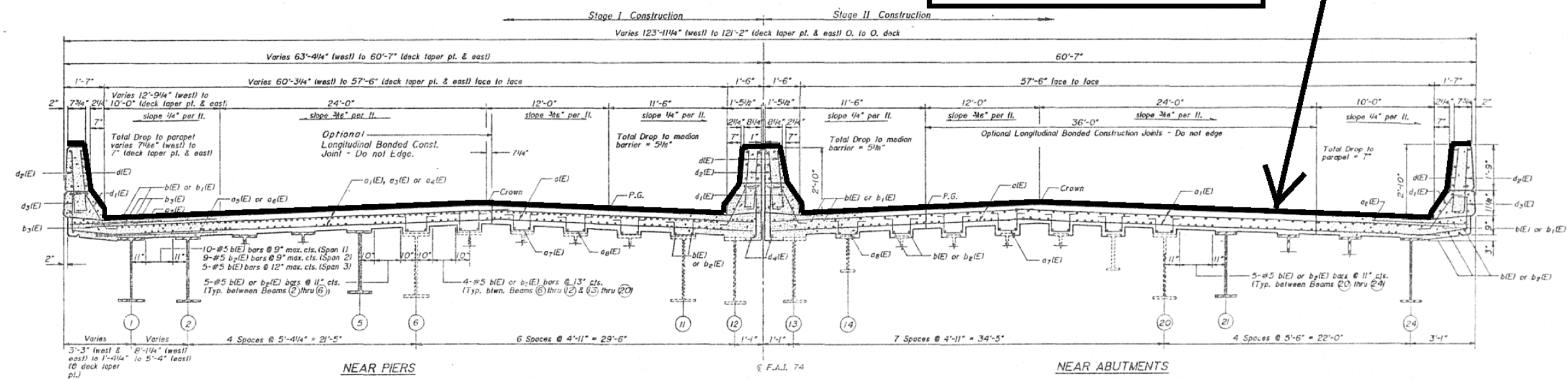
SECTION THRU NORTH PARAPET @ WEST DRAINS

SECTION THRU NORTH PARAPET @ EAST DRAINS

SECTION THRU MEDIAN BARRIER

SECTION THRU SOUTH PARAPET

PROPOSED BRIDGE DECK CONCRETE SEALER



TYPICAL SECTION THRU CHAMPAIGN; SIX-LANE

BASCOR, INC.
consulting engineers and planners

DESIGNED:	GSP
CHECKED:	HE
DRAWN:	SAW
CHECKED:	GSP

SUPERSTRUCTURE DETAILS I

F.A.I. ROUTE 74
OVER MARKET STREET
SECTION 04HB-2J BR
CHAMPAIGN COUNTY
STA. 1200+06.10

USER NAME = brandenburgj	DESIGNED - TJB	REVISED -
	DRAWN -	REVISED -
PLOT SCALE = 40,0000' / in.	CHECKED -	REVISED -
PLOT DATE = 6/26/2019	DATE - 6/21/2019	REVISED -

STATE OF ILLINOIS
DEPARTMENT OF TRANSPORTATION

TYPICAL SECTIONS

SCALE: SHEET 6 OF 6 SHEETS STA. TO STA.

F.A. RTE.	SECTION	COUNTY	TOTAL SHEETS	SHEET NO.
VAR.	FY20 BRIDGE DECK SEALING	VARIOUS	19	12
			CONTRACT NO. 70E27	
		ILLINOIS	FED. AID PROJECT	

MODEL: S:\MODEL\MAR15...
 FILE: 1401010000.dwg
 PROJECT: S:\PROJECTS\0570E27\CADD\Bridges\Hydraulics\0570E27-shs-drawings.dwg
 OFFICE: S:\PROJECTS\0570E27\CADD\Bridges\Hydraulics\0570E27-shs-drawings.dwg