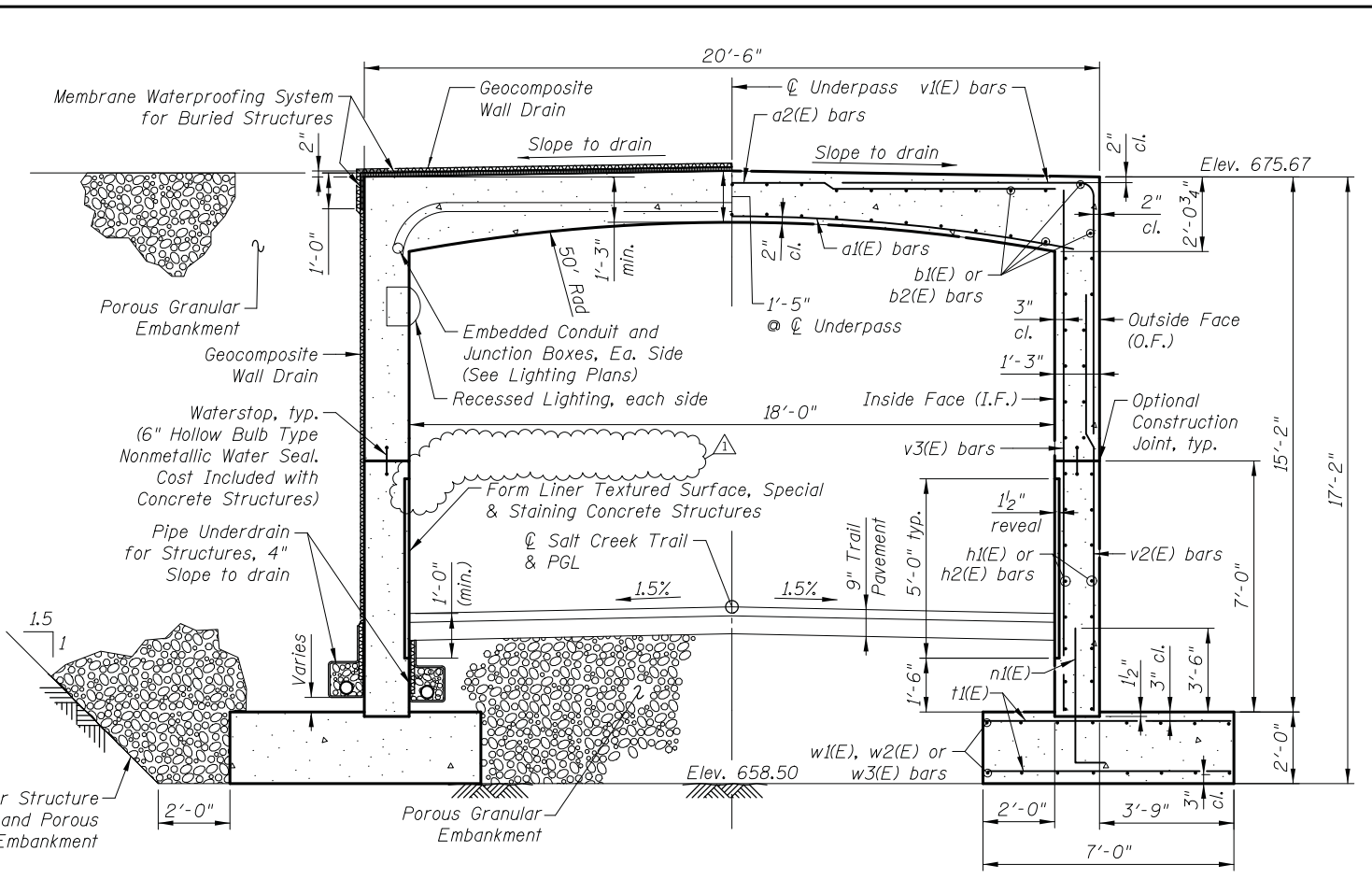
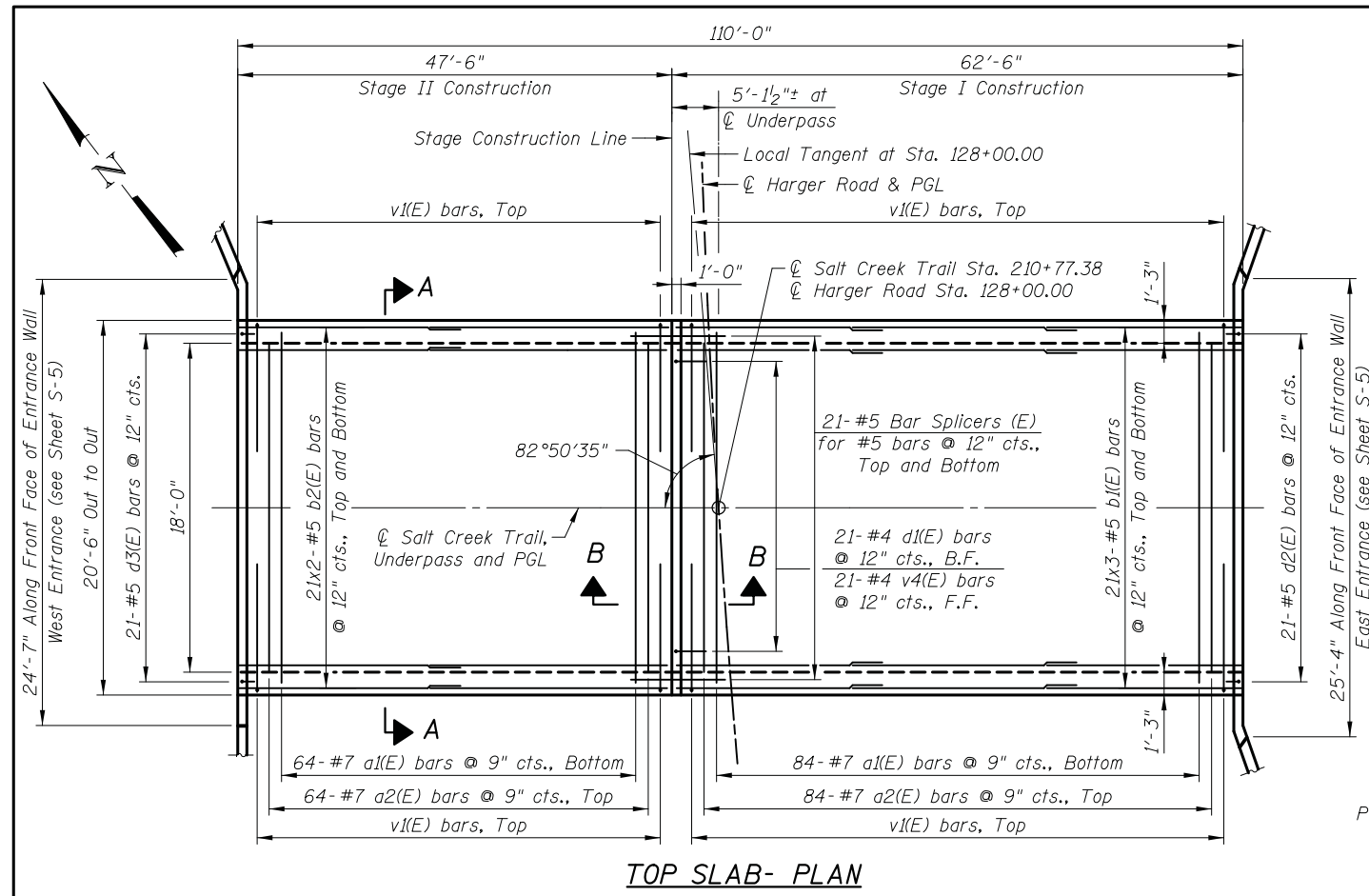
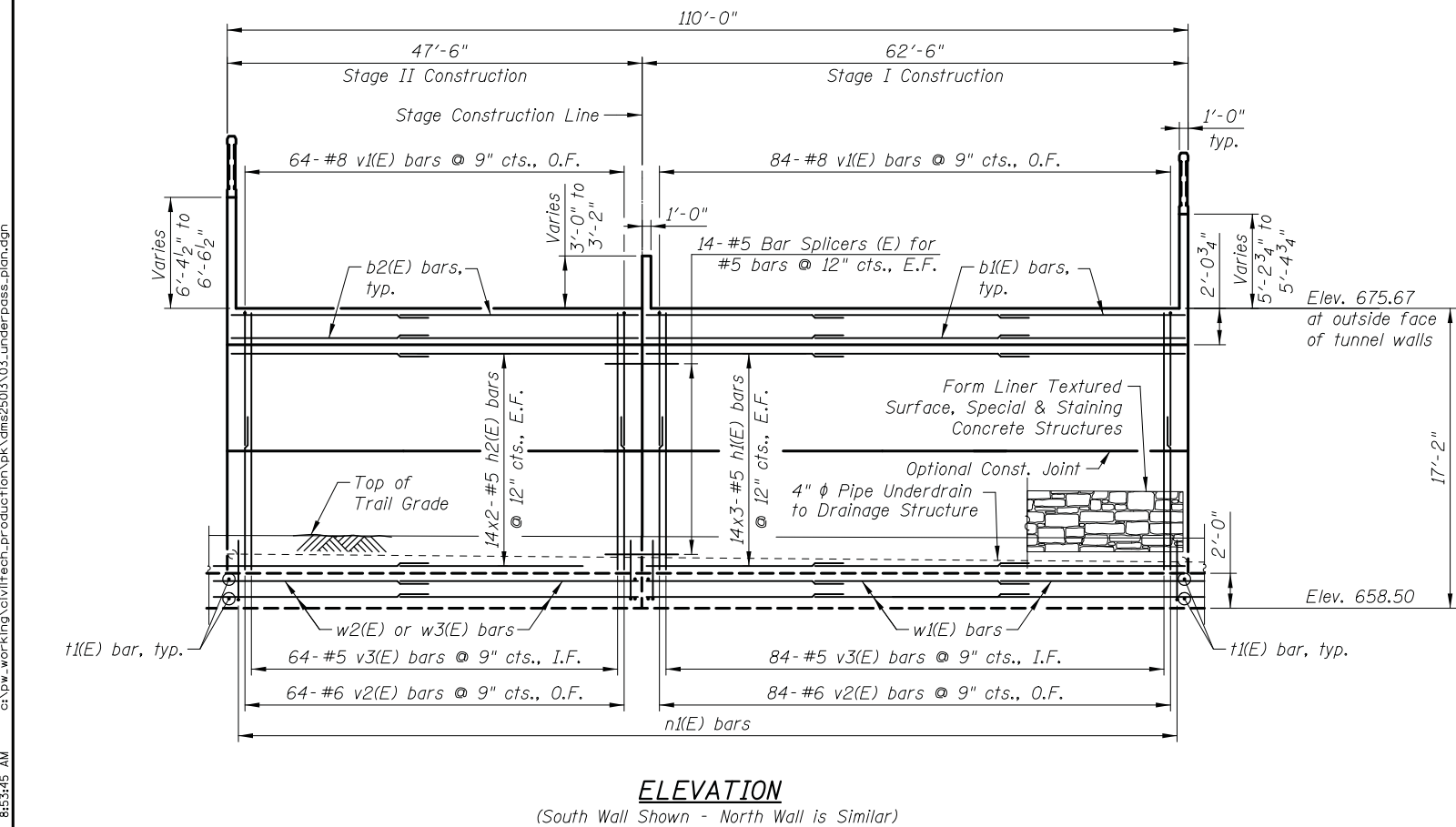


2/26/2020 8:53:45 AM c:\p.w.\work\king\civiltech\production\pk\dms2503\03_underpass_plan.dgn



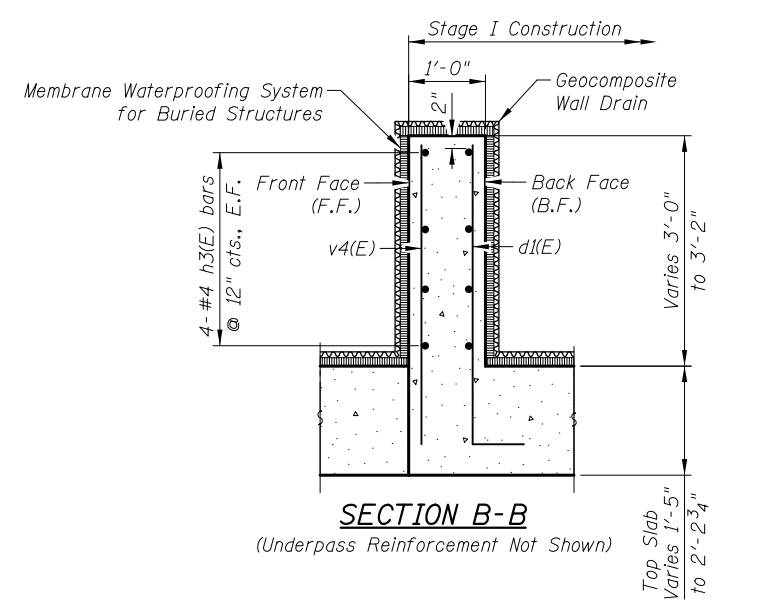
(This side showing drainage details.) (This side showing reinforcement details.)
 Maximum Applied Bearing Pressure = 5,465 psf
 Maximum Allowed Bearing Pressure = 6,000 psf



MINIMUM BAR LAP

| | |
|----|---------|
| #5 | = 3'-7" |
| #6 | = 4'-4" |
| #7 | = 5'-8" |

I.F. - Inside Face
 O.F. - Outside Face
 E.F. - Each Face



- Notes:
- See Sheet S-6 for Bill of Material and Bar Diagrams.
 - See Sheets S-7 & S-8 for pipe underdrain invert elevations and S-9 for Pipe Underdrain Detail.
 - See Sheets S-11 and S-12 for Architectural Details.
 - Bars indicated thus 13x3-#6 etc. indicates 13 lines of bars with 3 lengths per line.
 - See Sheet S-13 for bar splicer details and bar splicer Bill of Material.
 - The pay limits for Geocomposite Wall Drain are along the perimeter of the top and side walls. Geocomposite Wall Drain shall be according to Section 591 of the Standard Specifications except that concrete nails shall not be used in areas where it overlaps Membrane Waterproofing for Buried Structures

| | | | |
|----------|----------------|---------|---|
| DRAWN | - E. VAYSMAN | REVISED | - 2/25/2020 <small>removed handrail</small> |
| DESIGNED | - E. VAYSMAN | REVISED | - |
| CHECKED | - G. HATLESTAD | REVISED | - |
| DATE | - 11/25/2019 | REVISED | - |

| F.A.U. RTE. | SECTION | COUNTY | TOTAL SHEETS | SHEET NO. |
|---|----------------|--------|--------------|-----------|
| 1446 | 17-00049-00-PV | DUPAGE | 208 | 138 |
| CONTRACT NO. 61G16 | | | | |
| FED. ROAD DIST. NO. 1 ILLINOIS FED. AID PROJECT | | | | |