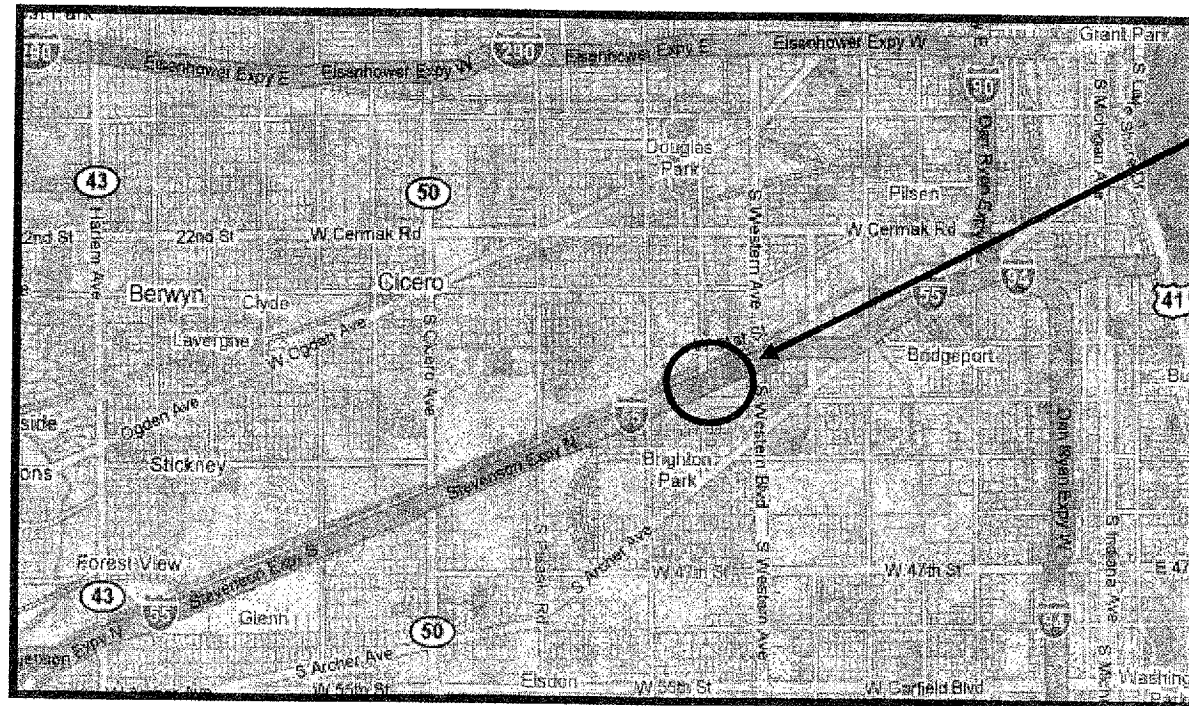


ROUTE VARIOUS	SECTION 2007-010 I	COUNTY VARIOUS	TOTAL SHEETS 18	SHEET NUMBER 12
------------------	-----------------------	-------------------	-----------------------	-----------------------

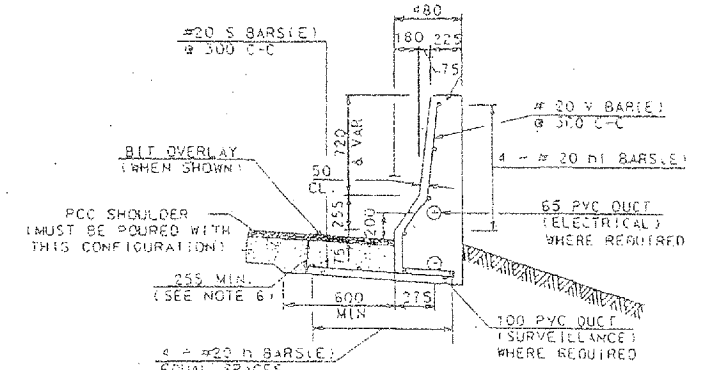
SOUTH TOWNSHIP

R 13 E

T 39 N



LOCATION 6: I-55: STEVENSON EXPRESSWAY
SOUTH WEST BOUND +/- 360' WEST OF WEST
ABUTMENT WESTERN AVENUE BRIDGE,
LEFT SIDE 0.3M EAST OF CALIFORNIA

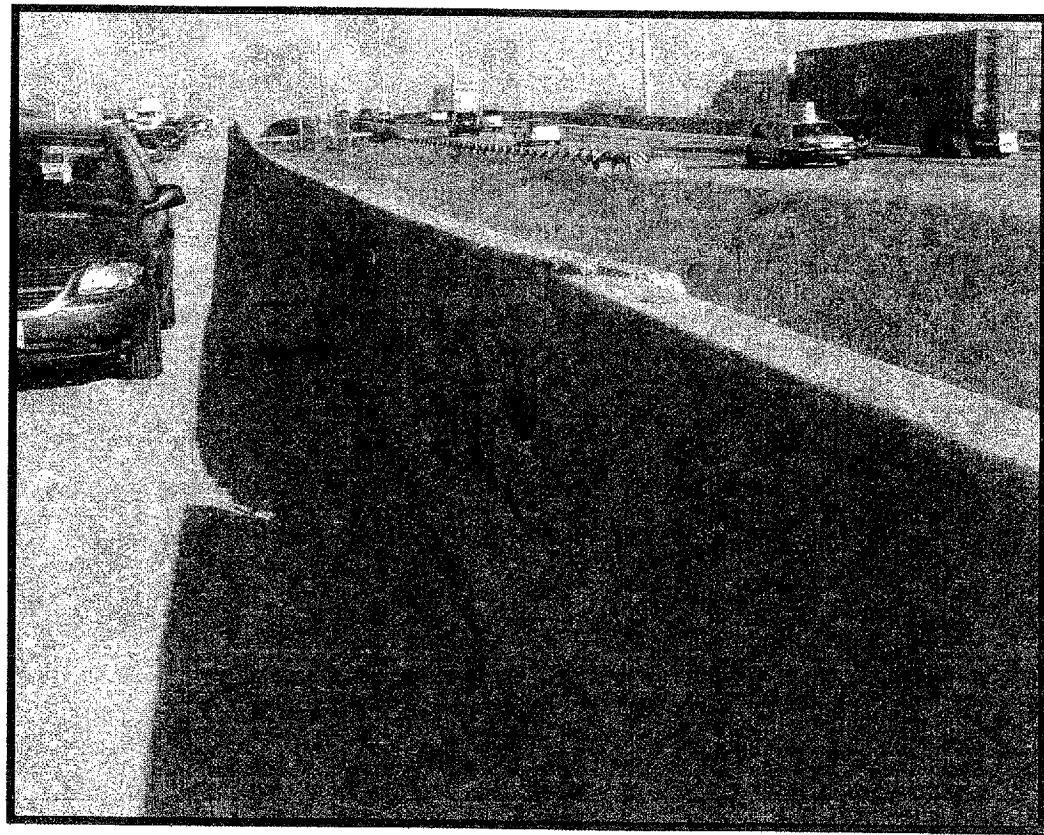


CONC BAR 1F225T1050 H-REINF.
CONCRETE BARRIER, SINGLE FACE,
225 TOP, 1050 HEIGHT, REINFORCED
(OR)
CONC BAR 1F225T1050 HV-REINF.
CONCRETE BARRIER, SINGLE FACE,
225 TOP, 1050 HEIGHT (VARIABLE), REINFORCED

FILL SECTION

FILL SECTION				
REINFORCING BARS 6.1 m SECTION				
BAR	NO.	SIZE	LENGTH	SHAPE
H	4	#20	5.95 m	—
S	21	#20	1.00 m	—
H1	4	#20	5.95 m	—
V	21	#20	1.63 m	⌋
REINFORCING BARS (EXCLUDING DUCTS)			Kg	243

LONGITUDINAL BARS SHOULD NOT
EXTEND THROUGH JOINTS.



OVERALL LENGTH = 26'

Above measurements in the existing detail are in Metric, and should be converted to English Units. The proposed reinforcing bars shall be included in the cost for Concrete Barrier Wall Removal and Replacement.