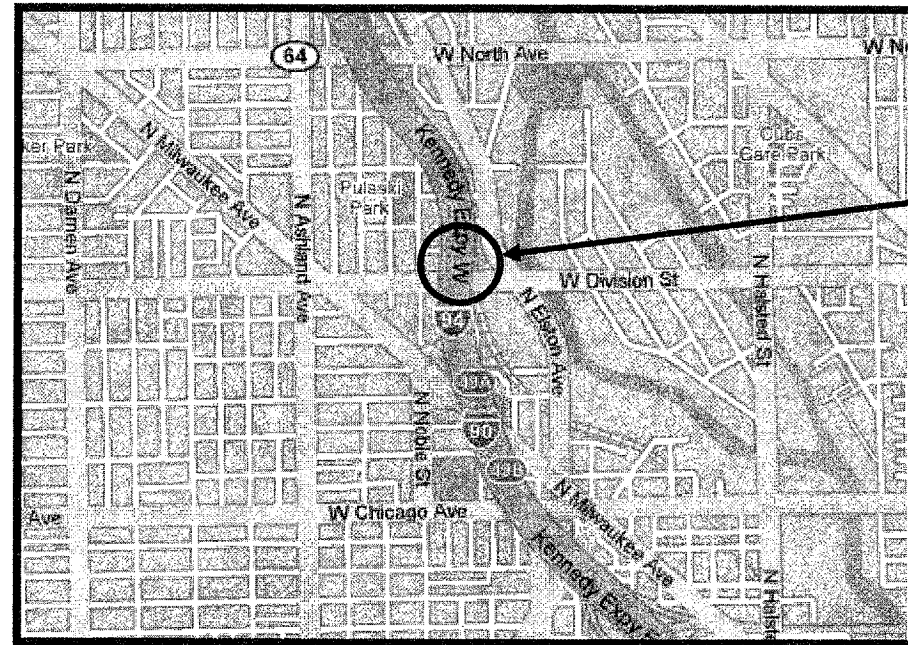


ROUTE	SECTION	COUNTY	TOTAL SHEETS	SHEET NUMBER
VARIOUS	2007-010 I	VARIOUS	19	15

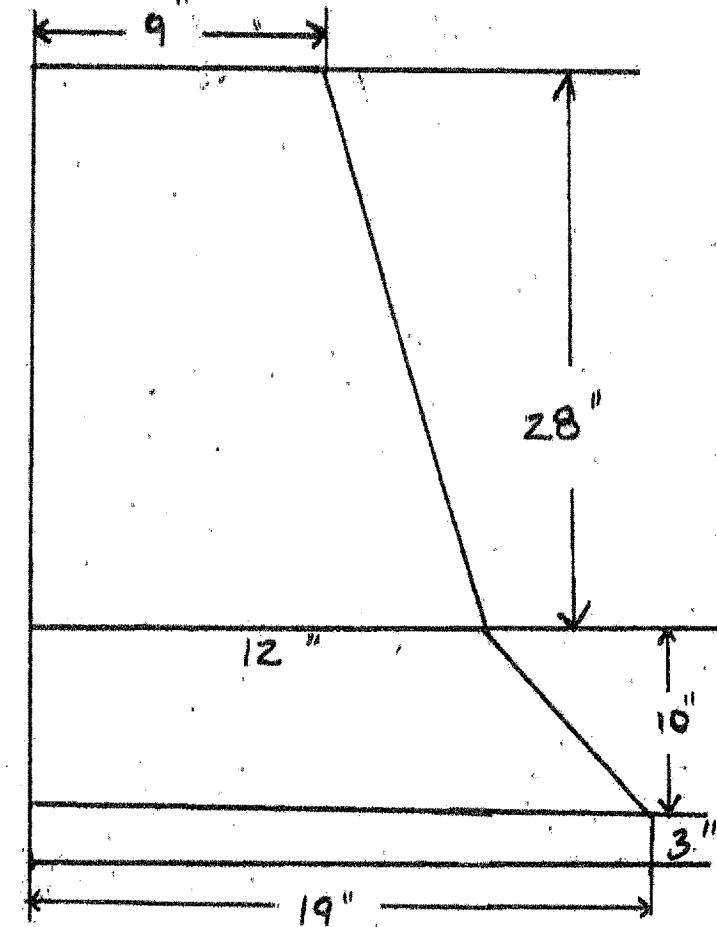
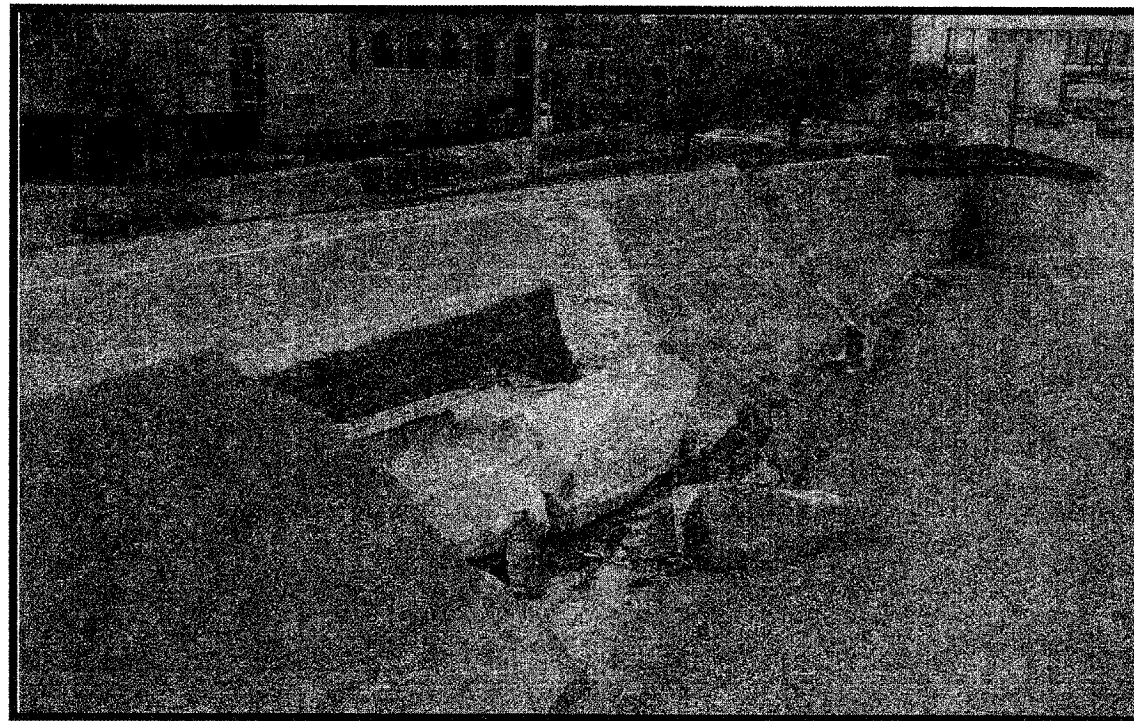
WEST TOWNSHIP

R 14 E

T 39 N



LOCATION 9: I-90/94: KENNEDY EXPRESSWAY
SOUTH EAST BOUND AT DIVISION EXIT, JUST
AFTER CRASH BARRELS RIGHT SIDE.



OVERALL LENGTH = 28'