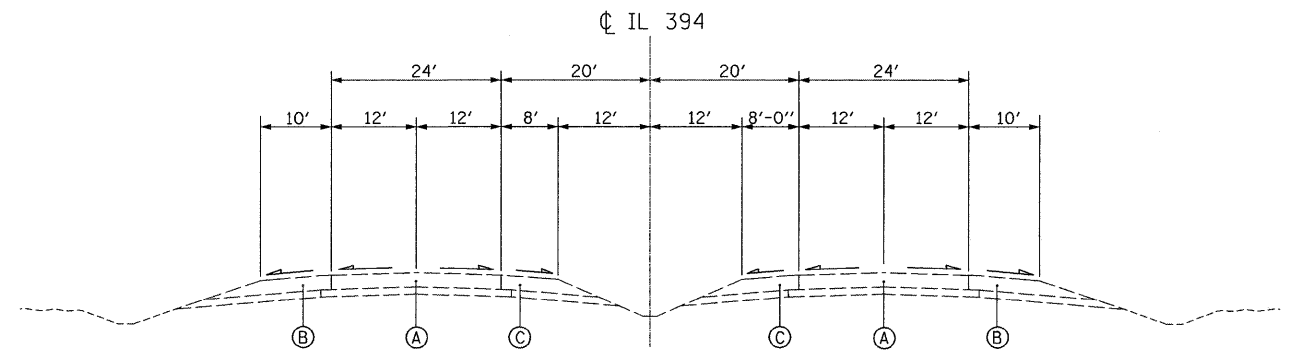


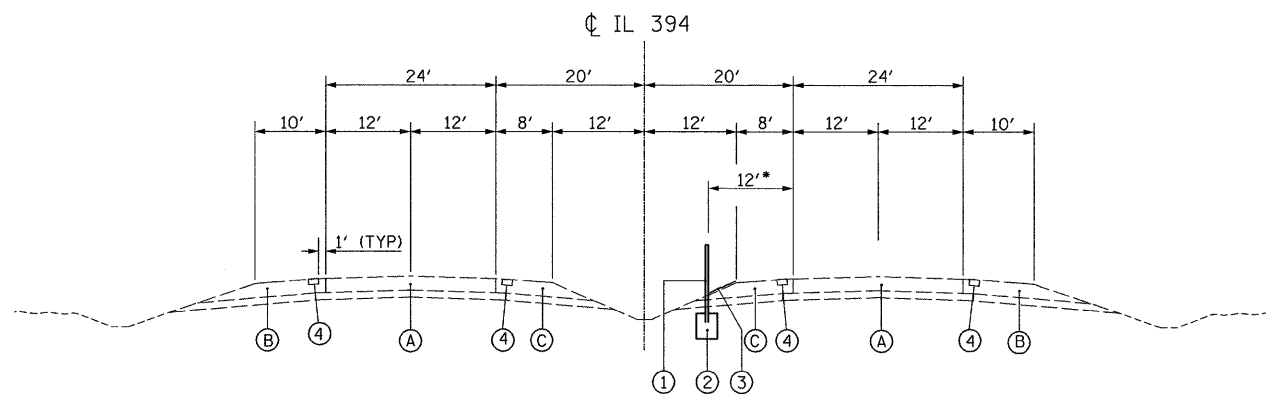
EXISTING IL 394 TYPICAL SECTION

STA. 1990+50 TO STA. 2240+00
 STA. 2302+00 TO STA. 2334+25
 STA. 2452+00 TO STA. 2473+00
 STA. 2529+50 TO STA. 2607+50
 STA. 2639+50 TO STA. 2673+00



EXISTING IL 394 TYPICAL SECTION

STA. 2248+00 TO STA. 2291+00
 STA. 2411+50 TO STA. 2441+50
 STA. 2475+50 TO STA. 2491+50
 STA. 2493+00 TO STA. 2527+00
 STA. 2610+00 TO STA. 2638+50



PROPOSED IL 394 TYPICAL SECTION

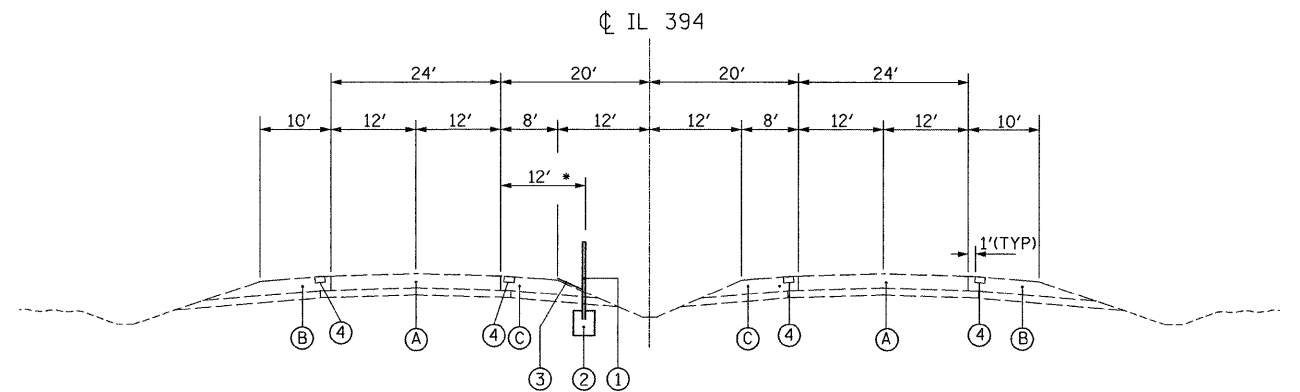
STA. 1990+50 TO STA. 2014+00
 STA. 2016+50 TO STA. 2039+00
 STA. 2046+00 TO STA. 2099+00
 STA. 2012+00 TO STA. 2120+00
 STA. 2125+00 TO STA. 2214+00
 STA. 2218+50 TO STA. 2240+00
 STA. 2302+00 TO STA. 2334+25
 STA. 2452+00 TO STA. 2455+50
 STA. 2458+50 TO STA. 2473+00
 STA. 2529+50 TO STA. 2559+50
 STA. 2560+75 TO STA. 2573+50
 STA. 2576+00 TO STA. 2588+50
 STA. 2590+00 TO STA. 2607+50
 STA. 2639+50 TO STA. 2673+00

EXISTING CONDITIONS:

- Ⓐ TRAVELED WAY
- Ⓑ RIGHT SHOULDER
- Ⓒ LEFT SHOULDER

PROPOSED IMPROVEMENTS:

- ① HIGH TENSION CABLE MEDIAN BARRIER
- ② CONCRETE FOUNDATION- INCLUDED IN THE COST OF THE APPLICABLE HIGH TENSION CABLE MEDIAN BARRIER
- ③ PROPOSED MOWING, (10' WIDE)
- ④ SHOULDER RUMBLE STRIP



PROPOSED IL 394 TYPICAL SECTION

STA. 2248+00 TO STA. 2291+00
 STA. 2411+50 TO STA. 2441+50
 STA. 2475+50 TO STA. 2491+50
 STA. 2493+00 TO STA. 2527+00
 STA. 2610+00 TO STA. 2638+50

* 10' OFFSET
 FROM STA. 2061+00 TO 2083+00
 FROM STA. 2348+00 TO 2398+00

ALL FOUNDATIONS SHOULD BE 42" DEEP AS A MINIMUM

FINAL OFFSET LOCATIONS SHALL BE DETERMINED IN THE FIELD BY THE ENGINEER

FILE NAME =	USER NAME = .USER.	DESIGNED -	REVISED -
FILEL		DRAWN - EAD	REVISED -
		CHECKED - PJ	REVISED -
		DATE - 12/10/2007	REVISED -

STATE OF ILLINOIS
 DEPARTMENT OF TRANSPORTATION

TYPICAL SECTIONS

SCALE: N.T.S. SHEET NO. 5 OF 28 SHEETS STA. TO STA.

F.A.P. RTE.	SECTION	COUNTY	TOTAL SHEETS	SHEET NO.
332	2007-044 I	WILL & COOK	53	5
FED. ROAD DIST. NO. ILLINOIS FED. AID PROJECT			CONTRACT NO. 60D34	