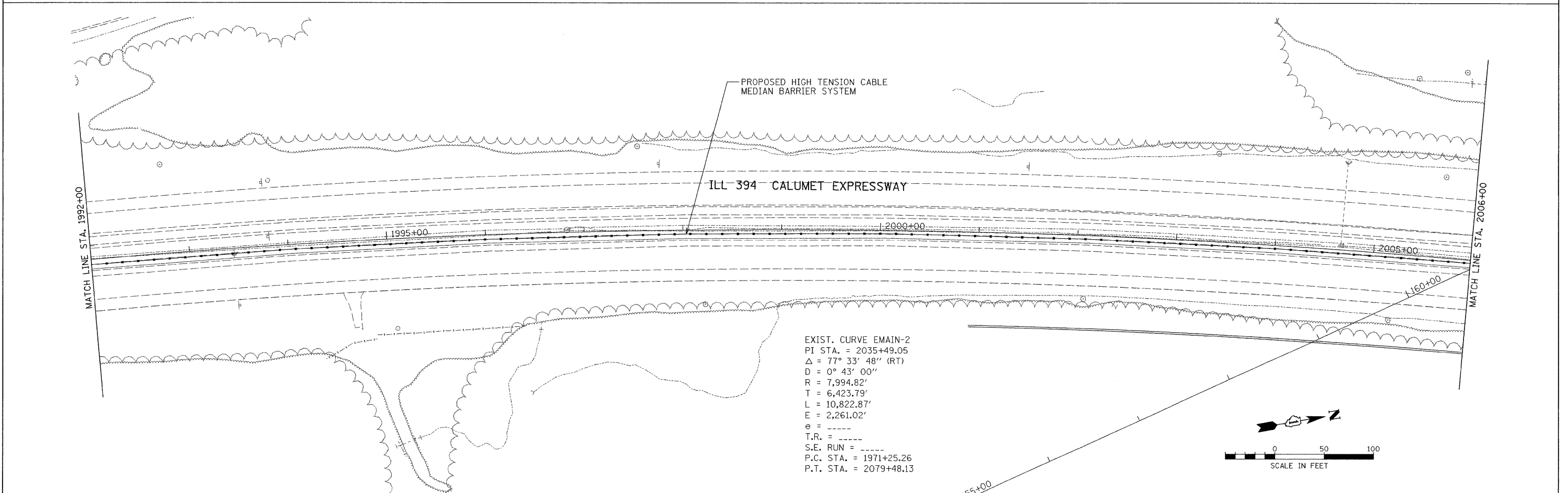


EXIST. CURVE EMAIN-2
 PI STA. = 2035+49.05
 $\Delta = 77^\circ 33' 48''$ (RT)
 $D = 0^\circ 43' 00''$
 $R = 7,994.82'$
 $T = 6,423.79'$
 $L = 10,822.87'$
 $E = 2,261.02'$
 $e = \text{---}$
 T.R. = ---
 S.E. RUN = ---
 P.C. STA. = 1971+25.26
 P.T. STA. = 2079+48.13



EXIST. CURVE EMAIN-2
 PI STA. = 2035+49.05
 $\Delta = 77^\circ 33' 48''$ (RT)
 $D = 0^\circ 43' 00''$
 $R = 7,994.82'$
 $T = 6,423.79'$
 $L = 10,822.87'$
 $E = 2,261.02'$
 $e = \text{---}$
 T.R. = ---
 S.E. RUN = ---
 P.C. STA. = 1971+25.26
 P.T. STA. = 2079+48.13

D:\Jobs\2006\20063028-32\CAD\DOT - Trans\gdm\00\ILL 394_Plan01.dgn
 2/2/2008 10:02:44 AM

FILE NAME =	USER NAME = .USER.	DESIGNED -	REVISED -	STATE OF ILLINOIS DEPARTMENT OF TRANSPORTATION	EXISTING AND PROPOSED ROADWAY PLAN			F.A.P. RTE.	SECTION	COUNTY	TOTAL SHEETS	SHEET NO.
#FILE#		DRAWN -	REVISED -					332	2007-044 I	WILL & COOK	53	6
PLOT SCALE = 50.0000' / IN.		CHECKED -	REVISED -		SCALE: 1" = 50'			SHEET NO. OF SHEETS STA. TO STA.				
PLOT DATE = 1/2/2008		DATE -	REVISED -		CONTRACT NO. 60D34							
								FED. ROAD DIST. NO. ILLINOIS FED. AID PROJECT				