

F.A.P. RTE.	SECTION	COUNTY	TOTAL SHEETS	SHEET NO.
336	112 R-N-1	MCHENRY	31	1

STATE OF ILLINOIS
DEPARTMENT OF TRANSPORTATION
DIVISION OF HIGHWAYS

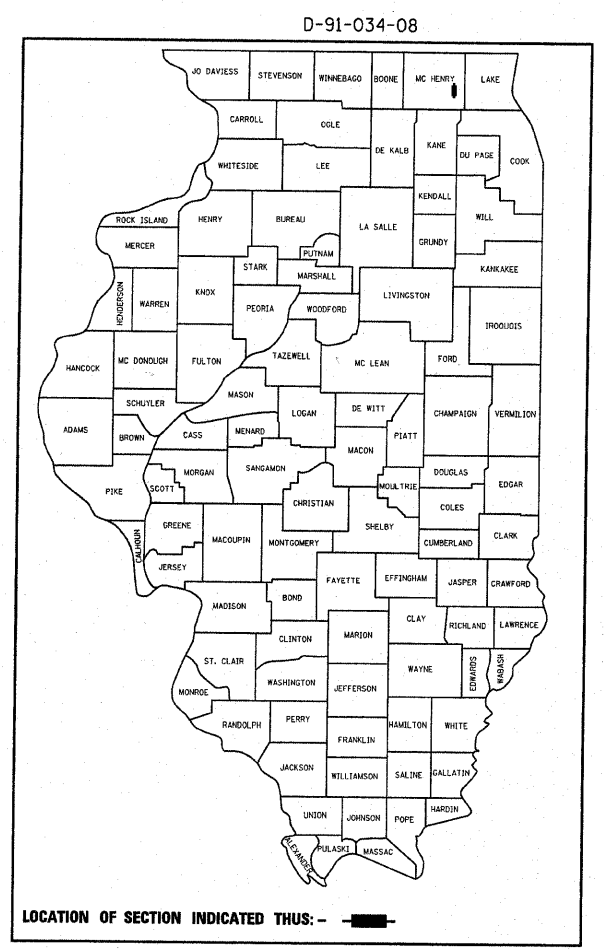
**PROPOSED
HIGHWAY PLANS**

F.A.P. 336 : ILL ROUTE 31
AT CRYSTAL LAKE AVENUE
SECTION: 112 R-N-1

**TRAFFIC SIGNAL MODERNIZATION, MEDIAN BARRIER, RESURFACING (3P)
MCHENRY COUNTY
PROJECT: ACHSIP-0336(046)
C-91-034-08**

FOR INDEX OF SHEETS, SEE SHEET NO. 2

PROJECT LOCATED IN
THE CITY OF CRYSTAL LAKE

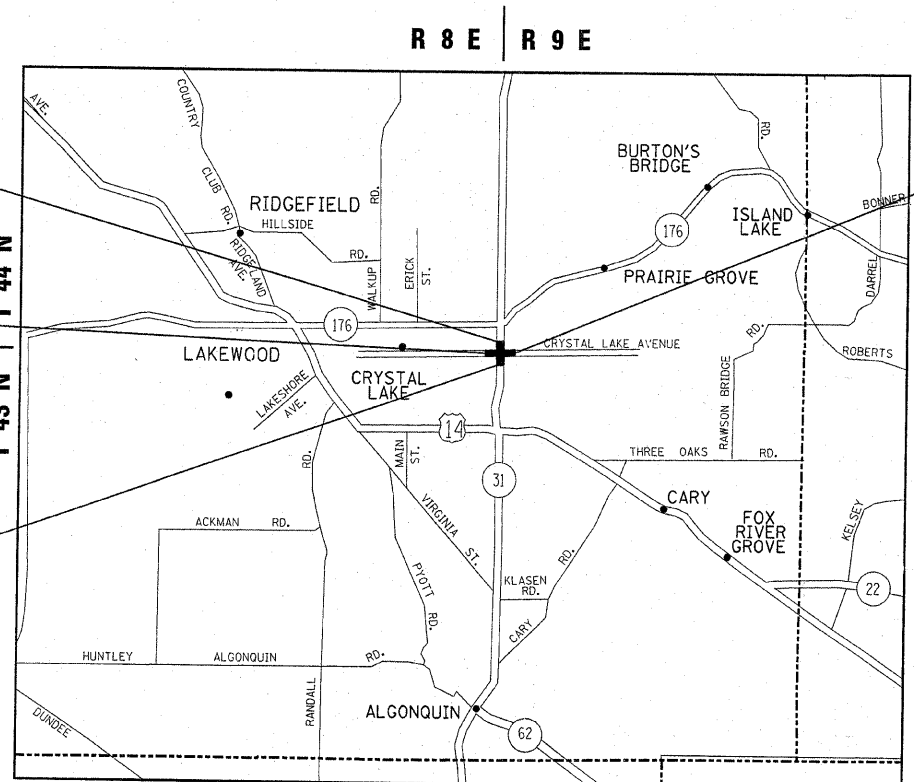


DISTRICT 1 DESIGN PLAN PREPARATION ENGINEER: KEN ENG / LONG TRAN (847) 705-4240

**IL 31
PROJECT ENDS
STATION 21+59**

**CRYSTAL LAKE AVENUE
PROJECT BEGINS
STATION 7+92**

**IL 31
PROJECT BEGINS
STATION 9+23**

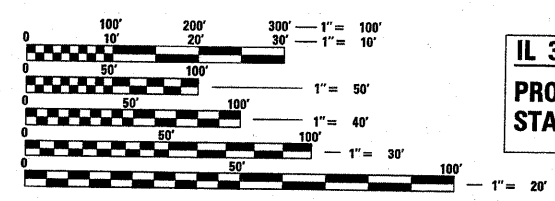


**CRYSTAL LAKE AVENUE
PROJECT ENDS
STATION 21+82**

TRAFFIC DATA
2005 ADT = 31,000
POSTED SPEED LIMIT = 40 MPH



**MAP SCALE
NOT TO SCALE**



FULL SIZE PLANS HAVE BEEN PREPARED USING STANDARD ENGINEERING SCALES. REDUCED SIZED PLANS WILL NOT CONFORM TO STANDARD SCALES. IN MAKING MEASUREMENTS ON REDUCED PLANS, THE ABOVE SCALES MAY BE USED.

J.U.L.I.E.
JOINT UTILITY LOCATION INFORMATION FOR EXCAVATION
1-800-892-0123

CONTRACT NO. 60D52

ALGONQUIN AND NUNDA TOWNSHIPS

(IL 31) GROSS & NET LENGTH OF PROJECT = 1,237 LINEAL FEET = 0.23 MILE
(CRYSTAL LAKE AVENUE) GROSS & NET LENGTH OF PROJECT = 1,390 LINEAL FEET = 0.26 MILE

STATE OF ILLINOIS
DEPARTMENT OF TRANSPORTATION
DIVISION OF HIGHWAYS

SUBMITTED October 25 20 07
Dione O'Keefe /cd
DEPUTY DIRECTOR OF HIGHWAYS, REGION ENGINEER
December 7, 20 07
Eric E. Haran /D
ENGINEER OF DESIGN AND ENVIRONMENT
December 7, 20 07
Christie M. Reed /D
DIRECTOR OF HIGHWAYS, CHIEF ENGINEER

**PRINTED BY THE AUTHORITY
OF THE STATE OF ILLINOIS**