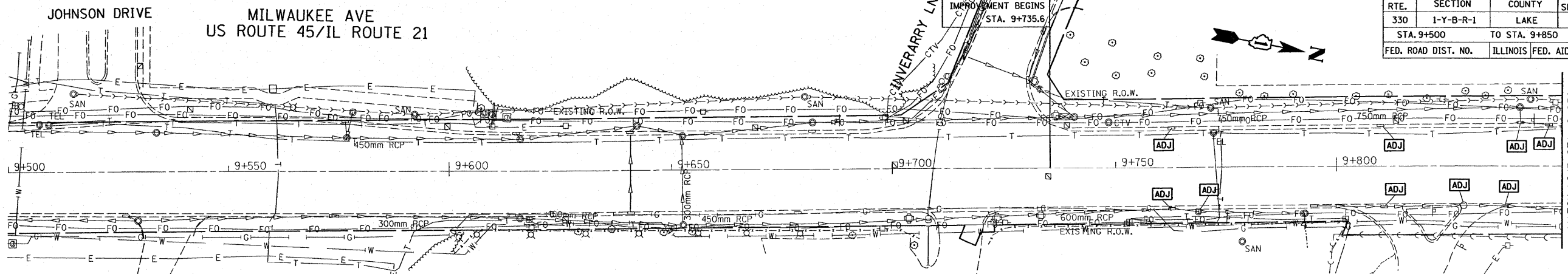
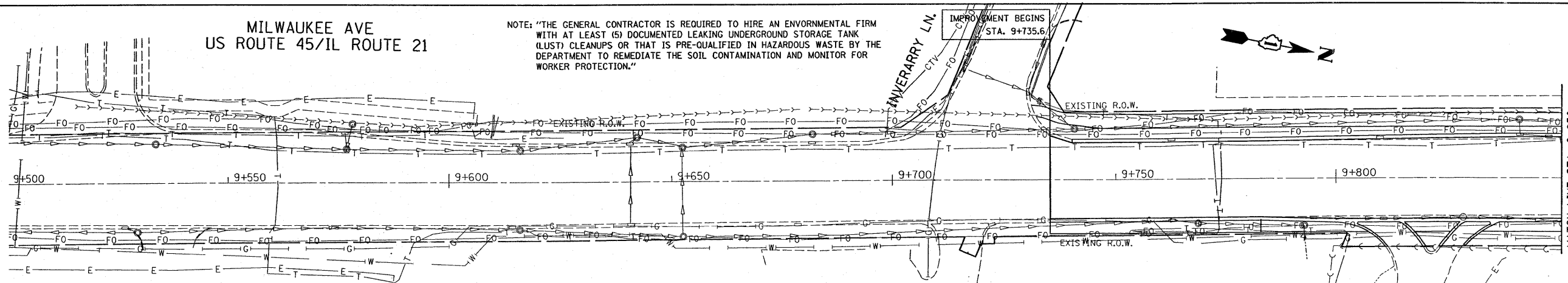


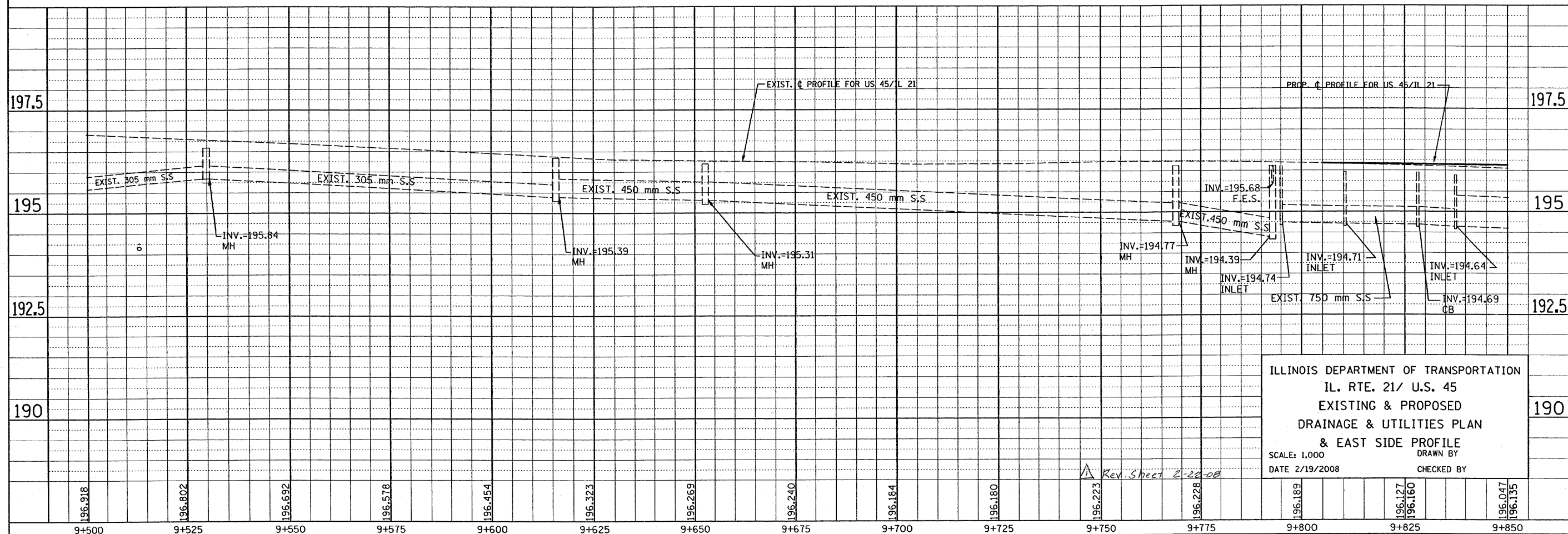
F.A.P. RTE.	SECTION	COUNTY	TOTAL SHEETS	SHEET NO.
330	1-Y-B-R-1	LAKE	121	31
STA. 9+500		TO STA. 9+850		
FED. ROAD DIST. NO.		ILLINOIS FED. AID PROJECT		



EXIST. DRAINAGE



PROP. DRAINAGE



ILLINOIS DEPARTMENT OF TRANSPORTATION
 IL. RTE. 21/ U.S. 45
 EXISTING & PROPOSED
 DRAINAGE & UTILITIES PLAN
 & EAST SIDE PROFILE
 SCALE: 1,000
 DATE 2/19/2008
 DRAWN BY
 CHECKED BY

196.918	196.802	196.692	196.578	196.454	196.323	196.269	196.240	196.184	196.180	196.223	196.228	196.189	196.127	196.160	196.047	196.135
9+500	9+525	9+550	9+575	9+600	9+625	9+650	9+675	9+700	9+725	9+750	9+775	9+800	9+825	9+850		