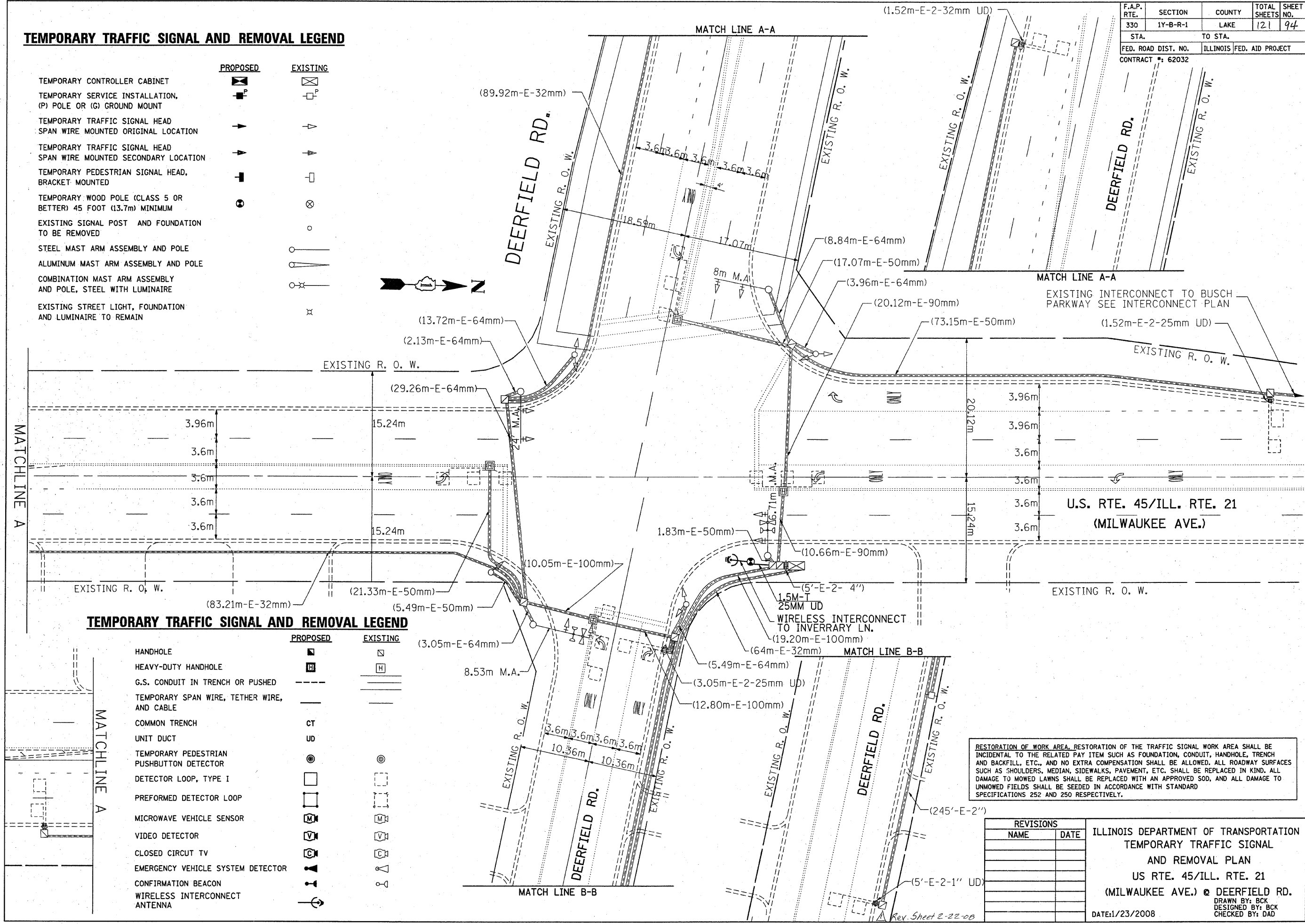


F.A.P. RTE.	SECTION	COUNTY	TOTAL SHEETS	SHEET NO.
330	1Y-B-R-1	LAKE	121	94
STA.		TO STA.		
FED. ROAD DIST. NO.		ILLINOIS FED. AID PROJECT		
CONTRACT #: 62032				

TEMPORARY TRAFFIC SIGNAL AND REMOVAL LEGEND

- | | | |
|--|--|--|
| TEMPORARY CONTROLLER CABINET | | |
| TEMPORARY SERVICE INSTALLATION, (P) POLE OR (G) GROUND MOUNT | | |
| TEMPORARY TRAFFIC SIGNAL HEAD SPAN WIRE MOUNTED ORIGINAL LOCATION | | |
| TEMPORARY TRAFFIC SIGNAL HEAD SPAN WIRE MOUNTED SECONDARY LOCATION | | |
| TEMPORARY PEDESTRIAN SIGNAL HEAD, BRACKET MOUNTED | | |
| TEMPORARY WOOD POLE (CLASS 5 OR BETTER) 45 FOOT (13.7m) MINIMUM | | |
| EXISTING SIGNAL POST AND FOUNDATION TO BE REMOVED | | |
| STEEL MAST ARM ASSEMBLY AND POLE | | |
| ALUMINUM MAST ARM ASSEMBLY AND POLE | | |
| COMBINATION MAST ARM ASSEMBLY AND POLE, STEEL WITH LUMINAIRE | | |
| EXISTING STREET LIGHT, FOUNDATION AND LUMINAIRE TO REMAIN | | |



TEMPORARY TRAFFIC SIGNAL AND REMOVAL LEGEND

- | | | |
|---|--|--|
| HANDHOLE | | |
| HEAVY-DUTY HANDHOLE | | |
| G.S. CONDUIT IN TRENCH OR PUSHED AND CABLE | | |
| TEMPORARY SPAN WIRE, TETHER WIRE, AND CABLE | | |
| COMMON TRENCH | | |
| UNIT DUCT | | |
| TEMPORARY PEDESTRIAN PUSHBUTTON DETECTOR | | |
| DETECTOR LOOP, TYPE I | | |
| PREFORMED DETECTOR LOOP | | |
| MICROWAVE VEHICLE SENSOR | | |
| VIDEO DETECTOR | | |
| CLOSED CIRCUIT TV | | |
| EMERGENCY VEHICLE SYSTEM DETECTOR | | |
| CONFIRMATION BEACON | | |
| WIRELESS INTERCONNECT ANTENNA | | |

RESTORATION OF WORK AREA, RESTORATION OF THE TRAFFIC SIGNAL WORK AREA SHALL BE INCIDENTAL TO THE RELATED PAY ITEM SUCH AS FOUNDATION, CONDUIT, HANDHOLE, TRENCH AND BACKFILL, ETC., AND NO EXTRA COMPENSATION SHALL BE ALLOWED. ALL ROADWAY SURFACES SUCH AS SHOULDERS, MEDIAN, SIDEWALKS, PAVEMENT, ETC. SHALL BE REPLACED IN KIND. ALL DAMAGE TO MOWED LAWNS SHALL BE REPLACED WITH AN APPROVED SOD, AND ALL DAMAGE TO UNMOWED FIELDS SHALL BE SEEDED IN ACCORDANCE WITH STANDARD SPECIFICATIONS 252 AND 250 RESPECTIVELY.

REVISIONS	
NAME	DATE

ILLINOIS DEPARTMENT OF TRANSPORTATION
 TEMPORARY TRAFFIC SIGNAL
 AND REMOVAL PLAN
 US RTE. 45/ILL. RTE. 21
 (MILWAUKEE AVE.) @ DEERFIELD RD.
 DRAWN BY: BCK
 DESIGNED BY: BCK
 CHECKED BY: DAD
 DATE: 1/23/2008

Rev. Sheet 2-22-08