

F.A.P. RTE.	SECTION	COUNTY	TOTAL SHEETS	SHEET NO.
330	1 Y-B-R-1	LAKE	121	3
FED. ROAD DIST. NO. 1		ILLINOIS	HIGHWAY PROJECT	

SUMMARY OF QUANTITIES				CONSTRUCTION TYPE CODE						SUMMARY OF QUANTITIES				CONSTRUCTION TYPE CODE					
CODE NO	ITEM	UNIT	TOTAL QUANTITIES	ROADWAY 1000-2A	BICYCLE PATH/SIDEWALK SFTY-1B	BRIDGE X020-2A	TRAFFIC SIGNAL INVERARY Y031-1F	TRAFFIC SIGNAL DEERFIELD Y031-1F	TRAFFIC SIGNAL INTERCONN Y031-1F	CODE NO	ITEM	UNIT	TOTAL QUANTITIES	ROADWAY 1000-2A	BICYCLE PATH/SIDEWALK SFTY-1B	BRIDGE X020-2A	TRAFFIC SIGNAL INVERARY Y031-1F	TRAFFIC SIGNAL DEERFIELD Y031-1F	TRAFFIC SIGNAL INTERCONN Y031-1F
50100100	REMOVAL OF EXISTING STRUCTURES	EACH	1			1				* 88030050	SIGNAL HEAD, LED, 1-FACE, 3-SECTION, BRACKET MOUNTED	EACH	2				2		
50300100	FLOOR DRAINS	EACH	2			2				* 88030100	SIGNAL HEAD, LED, 1-FACE, 5-SECTION, BRACKET MOUNTED	EACH	1						
50800515	BAR SPLICERS	EACH	207			207				* 88030110	SIGNAL HEAD, LED, 1-FACE, 5-SECTION, MAST-ARM MOUNTED	EACH	2				2		
51203200	TEST PILE METAL SHELLS	EACH	4			4				* 88030220	SIGNAL HEAD, LED, 2-FACE, 5-SECTION, BRACKET MOUNTED	EACH	1				1		
51500100	NAME PLATES	EACH	1			1				* 88030240	SIGNAL HEAD, LED, 2-FACE, 1-3 SECTION, 1-5 SECTION, BRACKET MOUNTED	EACH	1				1		
60208230	CATCH BASINS, TYPE C, TYPE 23 FRAME AND GRATE	EACH	20	20						* 88102710	PEDESTRIAN SIGNAL HEAD, LED, 1-FACE, BRACKET MOUNTED	EACH	3				1	2	
60251730	CATCH BASINS TO BE ADJUSTED WITH NEW TYPE 23 FRAME AND GRATE	EACH	4	4						* 88200210	TRAFFIC SIGNAL BACKPLATE, LOUVERED, ALUMINUM	EACH	4				4		
60261530	INLETS TO BE ADJUSTED WITH NEW TYPE 23 FRAME AND GRATE	EACH	9	9						* 88800100	PEDESTRIAN PUSH-BUTTON	EACH	4				2	2	
60500060	REMOVING INLETS	EACH	6	6						* 89502200	MODIFY EXISTING CONTROLLER	EACH	2				1	1	
* 63100085	TRAFFIC BARRIER TERMINAL, TYPE 6	EACH	4	4						* 89502380	REMOVE EXISTING HANDHOLE	EACH	4				1	3	
* 63100167	TRAFFIC BARRIER TERMINAL, TYPE 1 (SPECIAL) TANGENT	EACH	2	2						* 89502385	REMOVE EXISTING CONCRETE FOUNDATION	EACH	1				1		
* 63100169	TRAFFIC BARRIER TERMINAL, TYPE 1 (SPECIAL) FLARED	EACH	2	2						M2020010	EARTH EXCAVATION	CU M	3937	3806	131				
67000400	ENGINEER'S FIELD OFFICE, TYPE A	CAL MO	12	12						M2021200	REMOVAL AND DISPOSAL OF UNSUITABLE MATERIAL	CU M	300	300					
67100100	MOBILIZATION	L SUM	1	0.5		0.5				M2040800	FURNISHED EXCAVATION	CU M	2744	2744					
70101800	TRAFFIC CONTROL AND PROTECTION, (SPECIAL)	L SUM	1	1						M2070220	POROUS GRANULAR EMBANKMENT	CU M	123	123					
70106800	CHANGEABLE MESSAGE SIGN	CAL MO	28	14				14		M2070400	POROUS GRANULAR EMBANKMENT, SPECIAL	CU M	57		57				
* 78100100	RAISED REFLECTIVE PAVEMENT MARKER	EACH	204	204						M2070420	POROUS GRANULAR EMBANKMENT, SUBGRADE	CU M	123	123					
* 78100105	RAISED REFLECTIVE PAVEMENT MARKER (BRIDGE)	EACH	18	18						M2080150	TRENCH BACKFILL	CU M	250	250					
* 78200420	GUARDRAIL MARKERS, TYPE B	EACH	8	8						M2101000	GEOTECHNICAL FABRIC FOR GROUND STABILIZATION	SQ M	1000	1000					
* 78201000	TERMINAL MARKER - DIRECT APPLIED	EACH	4	4						M2113100	TOPSOIL FURNISH AND PLACE, 100MM	SQ M	3894	3894					
78300200	RAISED REFLECTIVE PAVEMENT MARKER REMOVAL	EACH	129	129						M2140100	GRADING AND SHAPING DITCHES	METER	190	190					
81400100	HANDHOLE	EACH	4				1		3	M2500314	SEEDING, CLASS 4B	HA	0.4	0.4					
85000200	MAINTENANCE OF EXISTING TRAFFIC SIGNAL INSTALLATION	EACH	1					1		M2500400	NITROGEN FERTILIZER NUTRIENT	KG	28	28					
* 87800115	CONCRETE FOUNDATION, TYPE A	EACH	2				1	1		M2500500	PHOSPHORUS FERTILIZER NUTRIENT	KG	28	28					
* 87900200	DRILL EXISTING HANDHOLE	EACH	2				1	1	1	M2500600	POTASSIUM FERTILIZER NUTRIENT	KG	28	28					
* 88030020	SIGNAL HEAD, LED, 1-FACE, 3-SECTION, MAST-ARM MOUNTED	EACH	2				2												

① 80% FED. 20% STATE	② 50% STATE 50% VILLAGE OF BUFFALO GROVE	③ 80% FED. 20% STATE	④ 80% FED. 13.3% STATE 6.7% VERNON TWP.	⑤ 80% FED. 10% STATE 5% BUFFALO GROVE 5% LAKE COUNTY	⑥ 80% FED. 20% STATE
----------------------	--	----------------------	---	--	----------------------

*SPECIALTY ITEMS

Rev. 2-22-08

REVISIONS	
NAME	DATE

ILLINOIS DEPARTMENT OF TRANSPORTATION
 US 45/IL 21
 OVER APTAKISIC CREEK
 SUMMARY OF QUANTITIES

F.A.P. RTE.	SECTION	COUNTY	TOTAL SHEETS	SHEET NO.
330	1 Y-B-R-1	LAKE	121	4
FED. ROAD DIST. NO. 1		ILLINOIS	HIGHWAY PROJECT	

SUMMARY OF QUANTITIES				CONSTRUCTION TYPE CODE						SUMMARY OF QUANTITIES				CONSTRUCTION TYPE CODE					
CODE NO	ITEM	UNIT	TOTAL QUANTITIES	ROADWAY I000-2A	BICYCLE PATH/SIDEWALK SFTY-1B	BRIDGE X020-2A	TRAFFIC SIGNAL INVERARY Y031-1F	TRAFFIC SIGNAL DEERFIELD Y031-1F	TRAFFIC SIGNAL INTERCONN Y031-1F	CODE NO	ITEM	UNIT	TOTAL QUANTITIES	ROADWAY I000-2A	BICYCLE PATH/SIDEWALK SFTY-1B	BRIDGE X020-2A	TRAFFIC SIGNAL INVERARY Y031-1F	TRAFFIC SIGNAL DEERFIELD Y031-1F	TRAFFIC SIGNAL INTERCONN Y031-1F
M2510630	EROSION CONTROL BLANKET	SQ M	3111	3111						M4402010	DRIVEWAY PAVEMENT REMOVAL	SQ M	500	500					
M2520110	SODDING, SALT TOLERANT	SQ M	783	783						M4402040	COMBINATION CURB AND GUTTER REMOVAL	METER	501	501					
M2520200	SUPPLEMENTAL WATERING	UNIT	46.6	46.6						M4402060	APPROACH SLAB REMOVAL	SQ M	347	347					
M2800250	TEMPORARY EROSION CONTROL SEEDING	KG	35	35						M4402540	PAVEMENT BREAKING	SQ M	1547	1547					
M2800400	PERIMETER EROSION BARRIER	METER	628	628						M5020100	STRUCTURE EXCAVATION	CU M	176			176			
M2810107	STONE RIPRAP, CLASS A4	SQ M	853			853				M5030280	CONCRETE ENCASEMENT	CU M	14			14			
M2820200	FILTER FABRIC	SQ M	846			846				M5030350	CONCRETE STRUCTURES	CU M	171.2			171.2			
M3111100	SUB-BASE GRANULAR MATERIAL, TYPE B 100MM	SQ M	1022	1022						M5030360	CONCRETE SUPERSTRUCTURE	CU M	213.2			213.2			
M3111150	SUB-BASE GRANULAR MATERIAL, TYPE B 150MM	SQ M	1914		1914					M5030390	BRIDGE DECK GROOVING	SQ M	427			427			
M3111300	SUB-BASE GRANULAR MATERIAL, TYPE B 300MM	SQ M	5885	5885						M5030450	PROTECTIVE COAT	SQ M	636			636			
M3530330	PORTLAND CEMENT CONCRETE BASE COURSE 330MM	SQ M	1022	1022						M5080205	REINFORCEMENT BARS, EPOXY COATED	KG	40970			40970			
M4060200	BITUMINOUS MATERIALS (PRIME COAT)	M TON	4.7	4.7						M5090010	ALUMINUM RAILING, TYPE L	METER	18			18			
M4060300	AGGREGATE (PRIME COAT)	M TON	24	24						M5090500	BICYCLE RAILING	METER	214		191	23			
M4060895	CONSTRUCTING TEST STRIP	EACH	1	1						M5090530	PARAPET RAILING	METER	23			23			
M4060982	HOT-MIX ASPHALT SURFACE REMOVAL - BUTT JOINT	SQ M	74.3	74.3						M5120120	FURNISHING METAL SHELL PILES 305MM X 4.55 MM	METER	1298			1298			
M4063310	HOT-MIX ASPHALT SURFACE COURSE, MIX "C", N50	M TON	240		240					M5120335	DRIVING PILES	METER	1298			1298			
M4063595	POLYMERIZED HOT-MIX ASPHALT SURFACE COURSE, MIX "F", N90	M TON	720	720						M5120900	TEMPORARY SHEET PILING	SQ M	71			71			
M4202285	PORTLAND CEMENT CONCRETE PAVEMENT 280MM (JOINTED)	SQ M	5885	5885						M542E120	PRECAST REINFORCED CONCRETE FLARED END SECTIONS 450MM	EACH	1	1					
M4205000	BRIDGE APPROACH PAVEMENT	SQ M	458	458						M542E128	PRECAST REINFORCED CONCRETE FLARED END SECTIONS 600MM	EACH	1	1					
M4205200	PROTECTIVE COAT	SQ M	3203	3203						M542E144	PRECAST REINFORCED CONCRETE FLARED END SECTIONS 900MM	EACH	1	1					
M4206100	BRIDGE APPROACH PAVEMENT CONNECTOR (PCC)	SQ M	35	35						M5504800	STORM SEWERS TO BE CLEANED	METER	100	100					
M4230200	PORTLAND CEMENT CONCRETE DRIVEWAY PAVEMENT, 200MM	SQ M	470	470						M5505530	STORM SEWERS, RUBBER GASKET, CLASS A, TYPE 1 300MM	METER	14	14					
M4240125	PORTLAND CEMENT CONCRETE SIDEWALK 125MM	SQ M	1910		1910					M5505550	STORM SEWERS, RUBBER GASKET, CLASS A, TYPE 1 450MM	METER	75	75					
M4400750	HOT-MIX ASPHALT SURFACE REMOVAL, 50MM	SQ M	5033	5033						M5505560	STORM SEWERS, RUBBER GASKET, CLASS A, TYPE 1 525MM	METER	1	1					
M4402000	PAVEMENT REMOVAL	SQ M	2540	2540						M5505570	STORM SEWERS, RUBBER GASKET, CLASS A, TYPE 1 600MM	METER	15	15					
										M5505610	STORM SEWERS, RUBBER GASKET, CLASS A, TYPE 1 900MM	METER	5	5					
										M5510025	STORM SEWER REMOVAL 300MM	METER	25	25					

①	②	③	④	⑤	⑥
80% FED. 20% STATE	50% STATE VILLAGE OF BUFFALO GROVE	80% FED. 20% STATE	80% FED. 13.3% STATE 6.7% VERNON TWP.	80% FED. 10% STATE 5% BUFFALO GROVE 5% LAKE COUNTY	80% FED. 20% STATE

Rev. 2-23-08

REVISIONS	
NAME	DATE

ILLINOIS DEPARTMENT OF TRANSPORTATION
US 45/IL 21
OVER APTAKISIC CREEK
SUMMARY OF QUANTITIES

F.A.P. RTE.	SECTION	COUNTY	TOTAL SHEETS	SHEET NO.
330	1 Y-B-R-1	LAKE	121	5
FED. ROAD DIST. NO. 1		ILLINOIS	HIGHWAY PROJECT	

SUMMARY OF QUANTITIES				CONSTRUCTION TYPE CODE						SUMMARY OF QUANTITIES				CONSTRUCTION TYPE CODE							
CODE NO	ITEM	UNIT	TOTAL QUANTITIES	ROADWAY 1000-2A	BICYCLE PATH/ SIDEWALK SFTY-1B	BRIDGE X020-2A	TRAFFIC SIGNAL INVERARY Y031-1F	TRAFFIC SIGNAL DEERFIELD Y031-1F	TRAFFIC SIGNAL INTERCONN Y031-1F	CODE NO	ITEM	UNIT	TOTAL QUANTITIES	ROADWAY 1000-2A	BICYCLE PATH/ SIDEWALK SFTY-1B	BRIDGE X020-2A	TRAFFIC SIGNAL INVERARY Y031-1F	TRAFFIC SIGNAL DEERFIELD Y031-1F	TRAFFIC SIGNAL INTERCONN Y031-1F		
M5910100	GEOCOMPOSITE WALL DRAIN	SQ M	50			50				M8101050	CONDUIT PUSHED, 50MM DIA., GALVANIZED STEEL	METER	110							110	
M6010605	PIPE UNDERDRAINS 100MM	METER	40	40						M8101060	CONDUIT PUSHED, 65MM DIA., GALVANIZED STEEL	METER	5				5				
M6011100	PIPE UNDERDRAINS FOR STRUCTURES 100MM	METER	61			61				M8120230	CONDUIT EMBEDDED IN STRUCTURE, 50 MM DIA. PVC	METER	18.5								18.5
M6020180	CATCH BASINS, TYPE A, 1.2M DIAMETER, TYPE 23 FRAME AND GRATE	EACH	6	6						M8190200	TRENCH AND BACKFILL FOR ELECTRICAL WORK	METER	411				5				406
M6021410	MANHOLES, TYPE A, 1.2M DIAMETER, TYPE 1 FRAME, CLOSED LID	EACH	19	19						M8731210	ELECTRIC CABLE IN CONDUIT, SIGNAL NO. 14 2C	METER	201				61		140		
M6060700	COMBINATION CONCRETE CURB AND GUTTER, TYPE B-15.60	METER	1263	1263						M8731220	ELECTRIC CABLE IN CONDUIT, SIGNAL NO. 14 3C	METER	201				61		140		
* M6300100	STEEL PLATE BEAM GUARD RAIL, TYPE A	METER	162	162						M8731240	ELECTRIC CABLE IN CONDUIT, SIGNAL NO. 14 5C	METER	31				31				
M6320030	GUARDRAIL REMOVAL	METER	189	189						* M8731300	ELECTRIC CABLE IN CONDUIT, LEAD-IN, NO. 14 1 PAIR	METER	83				83				
M7030100	SHORT-TERM PAVEMENT MARKING	METER	400	400			40			M8731800	ELECTRIC CABLE IN CONDUIT, SERVICE, NO. 6 2 C	METER	37				37				
M7030220	TEMPORARY PAVEMENT MARKING - LINE 100MM	METER	2240	2200						M8750050	TRAFFIC SIGNAL POST, 3.00 METER	EACH	1						1		
M7030240	TEMPORARY PAVEMENT MARKING - LINE 150MM	METER	52.5	52.5						M8750090	TRAFFIC SIGNAL POST, 4.25 METER	EACH	1				1				
M7030260	TEMPORARY PAVEMENT MARKING - LINE 300MM	METER	81.2	81.2						M8750110	TRAFFIC SIGNAL POST, 4.85 METER	EACH	3				3				
M7030280	TEMPORARY PAVEMENT MARKING - LINE 600MM	METER	9				9			M8860100	DETECTOR LOOP, TYPE I	METER	52				52				
M7031000	WORK ZONE PAVEMENT MARKING REMOVAL	SQ M	290	290	△					M8950230	REMOVE ELECTRIC CABLE FROM CONDUIT	METER	1391				37			1354	△
M7040100	TEMPORARY CONCRETE BARRIER	METER	180	180						M8950235	REMOVE AND REINSTALL ELECTRIC CABLE FROM CONDUIT	METER	25				25				
M7040200	RELOCATE TEMPORARY CONCRETE BARRIER	METER	180	180						MX032178	TEMPORARY INFORMATION SIGNING	SQ M	6.9	6.9							
M7800100	THERMOPLASTIC PAVEMENT MARKING - LETTERS AND SYMBOLS	SQ M	9				9			MX032529	SEGMENTAL CONCRETE BLOCK WALL	SQ M	268		268						
M7800105	THERMOPLASTIC PAVEMENT MARKING - LINE 100MM	METER	2240	2200			40			* MX032922	ELECTRIC CABLE IN CONDUIT, GROUNDING NO. 6 1C	METER	37				37				
M7800115	THERMOPLASTIC PAVEMENT MARKING - LINE 150MM	METER	52.5	52.5						MX033704	MANHOLE TY A 1.2M DIA W/FR & LID	EACH	10	10							
M7800125	THERMOPLASTIC PAVEMENT MARKING - LINE 300MM	METER	81.2	81.2						* MX871055	FIBER OPTIC CABLE IN CONDUIT, NO. 62.5/125, MM12F SM12F	METER	823								823
* M7800140	THERMOPLASTIC PAVEMENT MARKING - LINE 600MM	METER	9	9						* X0322374	REMOVE EXISTING TRAFFIC SIGNAL HEAD	EACH	25				1		1		△
M7802010	POLYUREA PAVEMENT MARKING TYPE I - LINE 100MM	METER	182.3	182.3						* X0322936	REMOVE EXISTING FLARED END SECTION	EACH	4	4							
M8100060	CONDUIT IN TRENCH, 50MM DIA., GALVANIZED STEEL	METER	406					406		* X0323412	REMOVE EXISTING SERVICE INSTALLATION	EACH	1				1				△
M8100070	CONDUIT IN TRENCH, 65MM DIA., GALVANIZED STEEL	METER	4.6				4.6			* X0962500	REMOVE EXISTING TRAFFIC SIGNAL EQUIPMENT	L SUM	1				1				
										X4022000	TEMPORARY ACCESS (COMMERCIAL ENTRANCE)	EACH	3	3							

①	②	③	④	⑤	⑥
80% FED. 20% STATE	50% STATE 50% VILLAGE OF BUFFALO GROVE	80% FED. 20% STATE	80% FED. 13.3% STATE 6.7% VERNON TWP.	80% FED. 10% STATE 5% BUFFALO GROVE 5% LAKE COUNTY	80% FED. 20% STATE

* SPECIALTY ITEMS

REVISIONS	
NAME	DATE

ILLINOIS DEPARTMENT OF TRANSPORTATION
 US 45/IL 21
 OVER APTAKISIC CREEK
 SUMMARY OF QUANTITIES

△ Rev. 2-22-00

F.A.P. RTE.	SECTION	COUNTY	TOTAL SHEETS	SHEET NO.
330	1 Y-B-R-1	LAKE	121	5g
FED. ROAD DIST. NO. 1		ILLINOIS	HIGHWAY PROJECT	

SUMMARY OF QUANTITIES			CONSTRUCTION TYPE CODE						
CODE NO	ITEM	UNIT	TOTAL QUANTITIES	ROADWAY 1000-2A	BICYCLE PATH/SIDEWALK SFTY-1B	BRIDGE X020-2A	TRAFFIC SIGNAL INVERARY Y031-1F	TRAFFIC SIGNAL DEERFIELD Y031-1F	TRAFFIC SIGNAL INTERCONN Y031-1F
X5020501	UNDERWATER STRUCTURE EXCAVATION PROTECTION - LOCATION 1	EACH	1			1			
X5020502	UNDERWATER STRUCTURE EXCAVATION PROTECTION - LOCATION 2	EACH	1			1			
* X8050015	SERVICE INSTALLATION - POLE MOUNTED	EACH	1				1		
X8620020	UNINTERRUPTIBLE POWER SUPPLY	EACH	1				1		
XX003136	CATCH BASIN TYPE C	EACH	2	2					
Z0013798	CONSTRUCTION LAYOUT	L SUM	1	0.5		0.5			
Z0030240	IMPACT ATTENUATORS, TEMPORARY (NON-REDIRECTIVE), TEST LEVEL 2	EACH	2	2					
Z0030340	IMPACT ATTENUATORS, RELOCATE (NON-REDIRECTIVE), TEST LEVEL 2	EACH	2	2					
MX033290	SEDIMENT CONTROL, SILT FENCE	METER	50	50					
M542E124	PRECAST REINFORCED CONCRETE FLARED END SECTION 525MM	EACH	1	1					
M5505540	STORM SEWERS, RUBBER GASKET, CLASS A, TYPE 1 375MM	METER	73	73					
M5505930	STORM SEWERS, RUBBER GASKET, CLASS A, TYPE 2 300MM	METER	271	271					
M5505940	STORM SEWERS, RUBBER GASKET, CLASS A, TYPE 2 375MM	METER	26	26					
M5505960	STORM SEWERS, RUBBER GASKET, CLASS A, TYPE 2 525 MM	METER	95	95					
M5505970	STORM SEWERS, RUBBER GASKET, CLASS A, TYPE 2 600MM	METER	183	183					
M5505990	STORM SEWERS, RUBBER GASKET, CLASS A, TYPE 2 750MM	METER	6	6					
MX703200	WET TEMPORARY PAVEMENT MARKING TAPE, TYPE III	METER	4000	4000					
X0325935	TEMPORARY WIRELESS INTERCONNECT	EACH	2				1	1	
* 06900450	SPECIAL WASTE PLANS AND REPORT	L SUM	1	1					
* 06900530	SOIL DISPOSAL ANALYSIS	EACH	1	1					
* M6690100	BACKFILL PLUGS	CUM	58	58					
* M6690200	NON-SPECIAL WASTE DISPOSAL	CUM	505	505					
MX032200	ENGINEERED BARRIER	SM M	1510	1510					

SUMMARY OF QUANTITIES			CONSTRUCTION TYPE CODE						
CODE NO	ITEM	UNIT	TOTAL QUANTITIES	ROADWAY 1000-2A	BICYCLE PATH/SIDEWALK SFTY-1B	BRIDGE X020-2A	TRAFFIC SIGNAL INVERARY 1000-2A	TRAFFIC SIGNAL DEERFIELD 1000-2A	TRAFFIC SIGNAL INTERCONN 1000-2A

①	②	③	④	⑤	⑥
80% FED. 20% STATE	50% STATE 50% VILLAGE OF BUFFALO GROVE	80% FED. 20% STATE	80% FED. 13.3% STATE 6.7% VERNON TWP.	80% FED. 10% STATE 5% BUFFALO GROVE 5% LAKE COUNTY	80% FED. 20% STATE

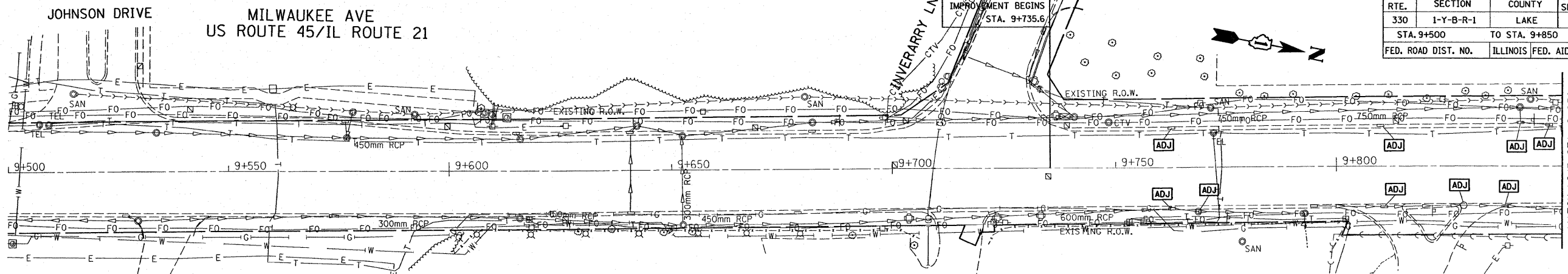
* SPECIALTY ITEMS

Rev. 2-22-08

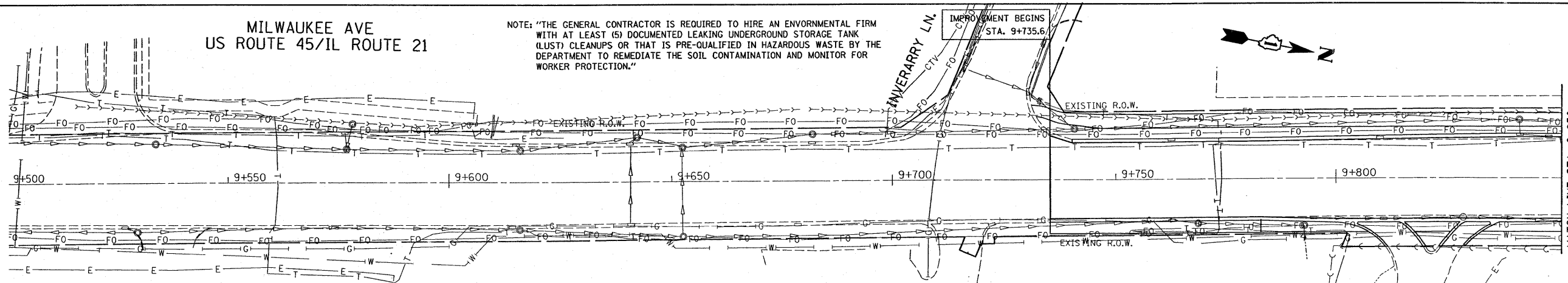
REVISIONS	
NAME	DATE

ILLINOIS DEPARTMENT OF TRANSPORTATION
US 45/IL 21
OVER APTAKISIC CREEK
SUMMARY OF QUANTITIES

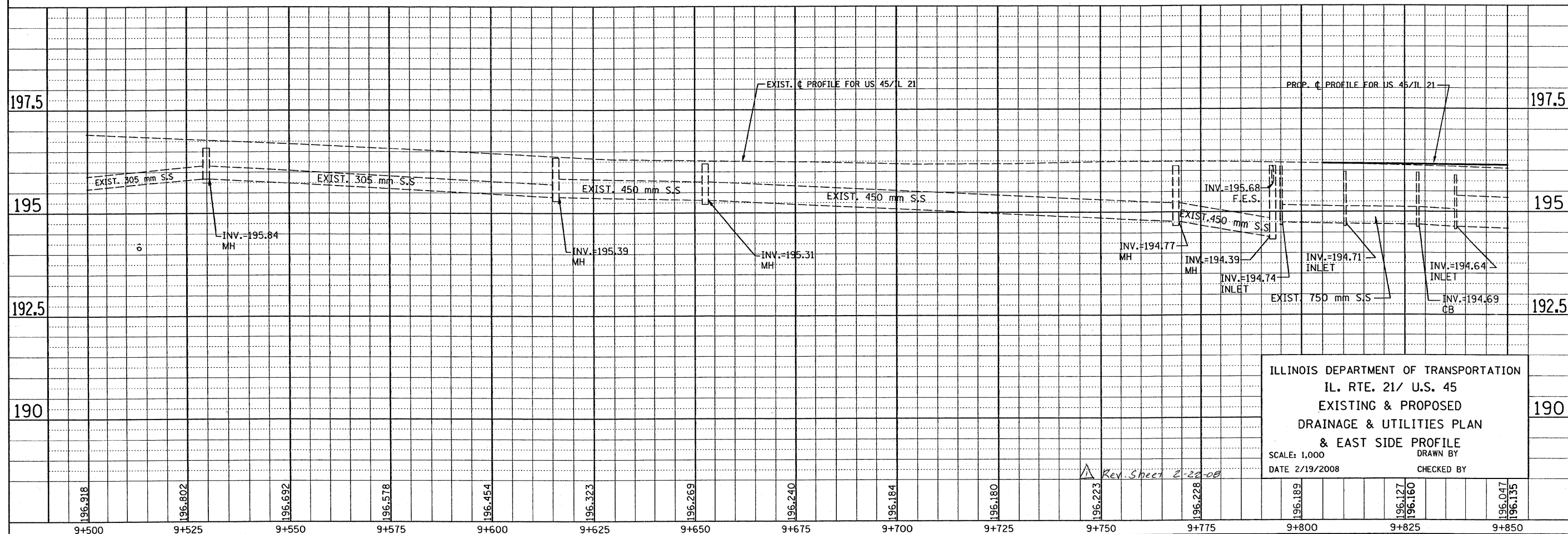
F.A.P. RTE.	SECTION	COUNTY	TOTAL SHEETS	SHEET NO.
330	1-Y-B-R-1	LAKE	121	31
STA. 9+500		TO STA. 9+850		
FED. ROAD DIST. NO.		ILLINOIS FED. AID PROJECT		



EXIST. DRAINAGE



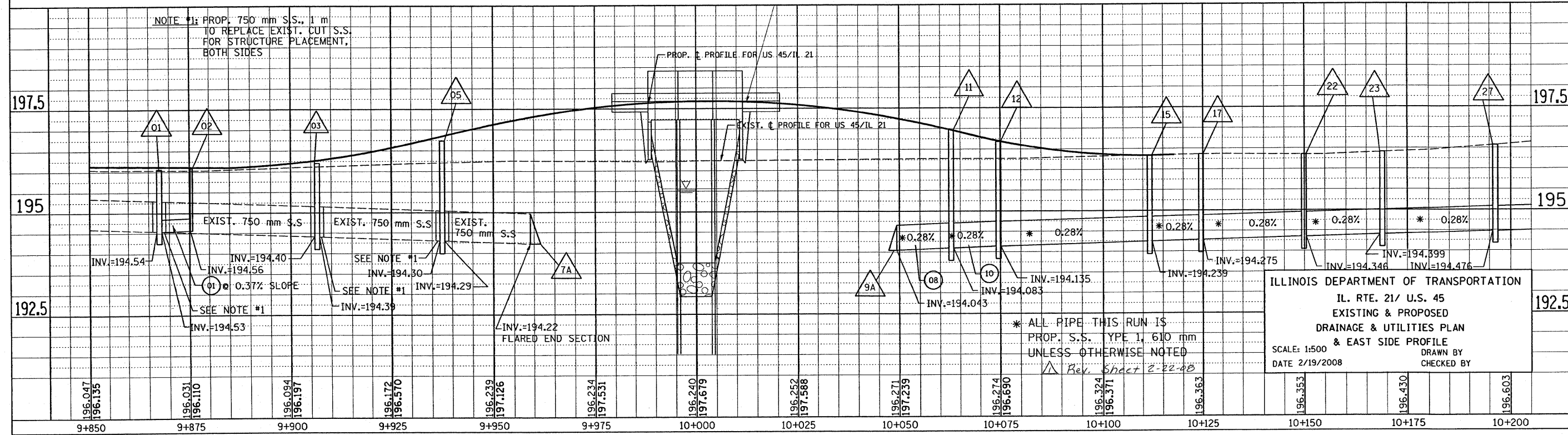
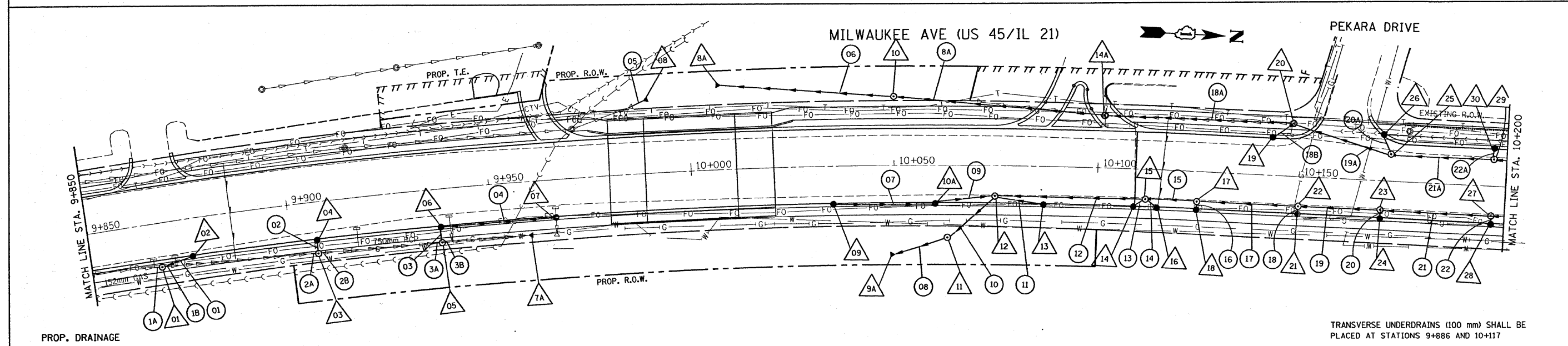
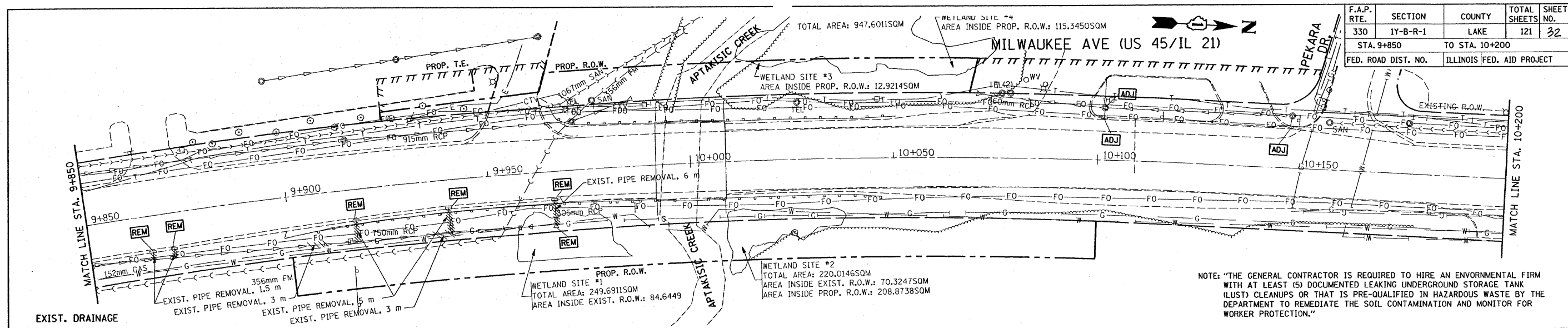
PROP. DRAINAGE



ILLINOIS DEPARTMENT OF TRANSPORTATION
 IL. RTE. 21/ U.S. 45
 EXISTING & PROPOSED
 DRAINAGE & UTILITIES PLAN
 & EAST SIDE PROFILE
 SCALE: 1,000
 DATE 2/19/2008
 DRAWN BY
 CHECKED BY

Rev Sheet 2-22-08

F.A.P. RTE.	SECTION	COUNTY	TOTAL SHEETS	SHEET NO.
330	1Y-B-R-1	LAKE	121	32
STA. 9+850		TO STA. 10+200		
FED. ROAD DIST. NO.		ILLINOIS FED. AID PROJECT		



ILLINOIS DEPARTMENT OF TRANSPORTATION
 IL. RTE. 21/ U.S. 45
 EXISTING & PROPOSED
 DRAINAGE & UTILITIES PLAN
 & EAST SIDE PROFILE

SCALE: 1:500
 DATE 2/19/2008

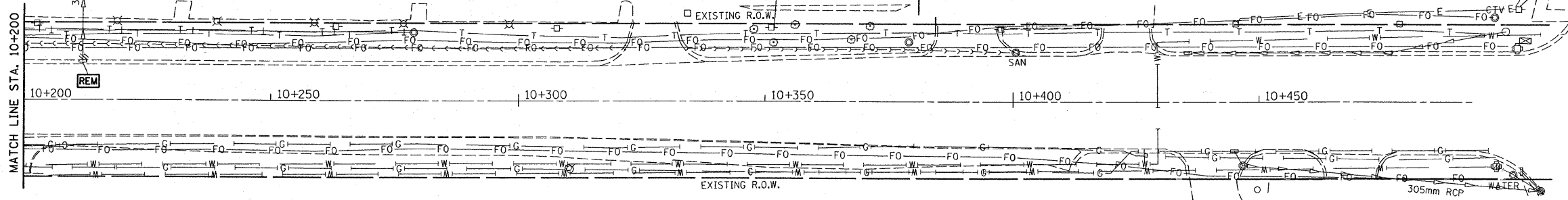
DRAWN BY
 CHECKED BY

NOTE: "THE GENERAL CONTRACTOR IS REQUIRED TO HIRE AN ENVIRONMENTAL FIRM WITH AT LEAST (5) DOCUMENTED LEAKING UNDERGROUND STORAGE TANK (LUST) CLEANUPS OR THAT IS PRE-QUALIFIED IN HAZARDOUS WASTE BY THE DEPARTMENT TO REMEDIATE THE SOIL CONTAMINATION AND MONITOR FOR WORKER PROTECTION."

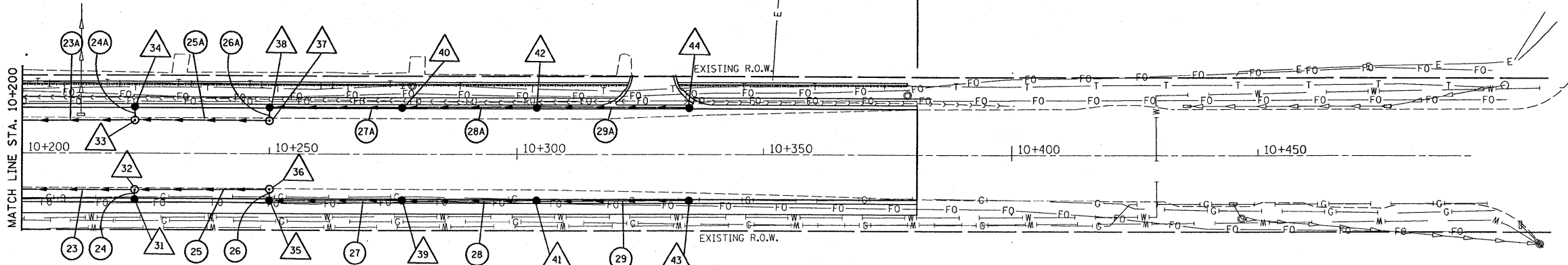
MILWAUKEE AVE (US 45/IL 21)

IMPROVEMENT ENDS STA. 10+381

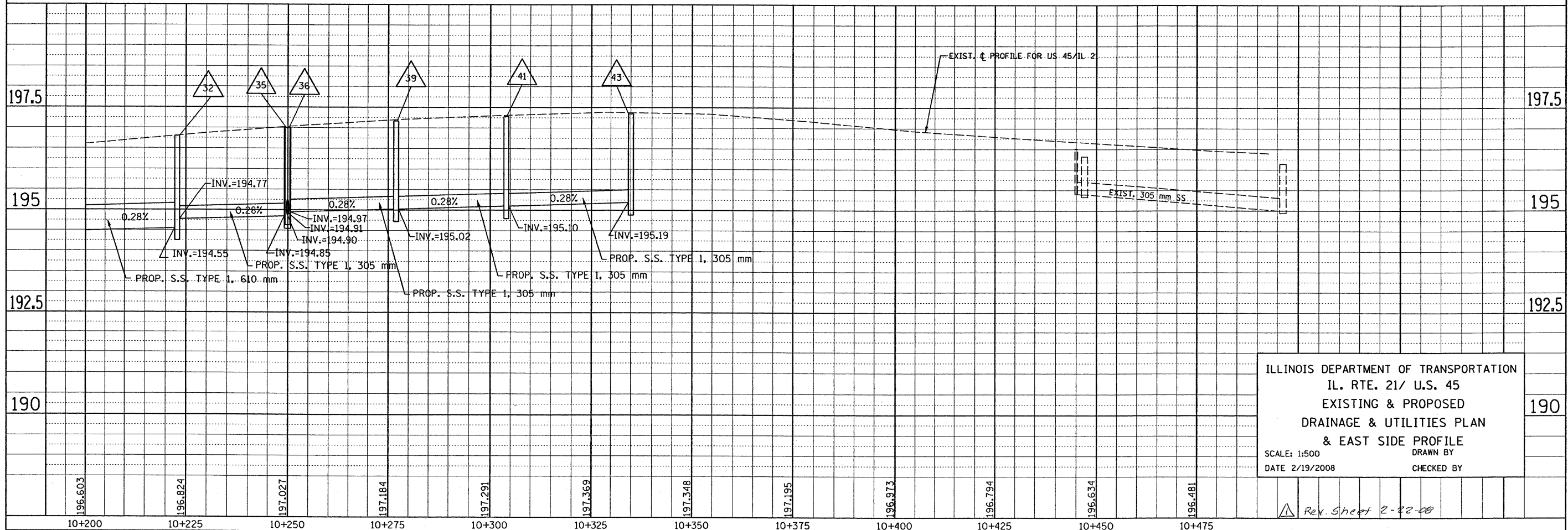
F.A.P. RTE.	SECTION	COUNTY	TOTAL SHEETS	SHEET NO.
330	1Y-B-R-1	LAKE	121	33
STA. 10+200		TO STA. 10+381		
FED. ROAD DIST. NO.		ILLINOIS	FED. AID PROJECT	



EXIST. DRAINAGE



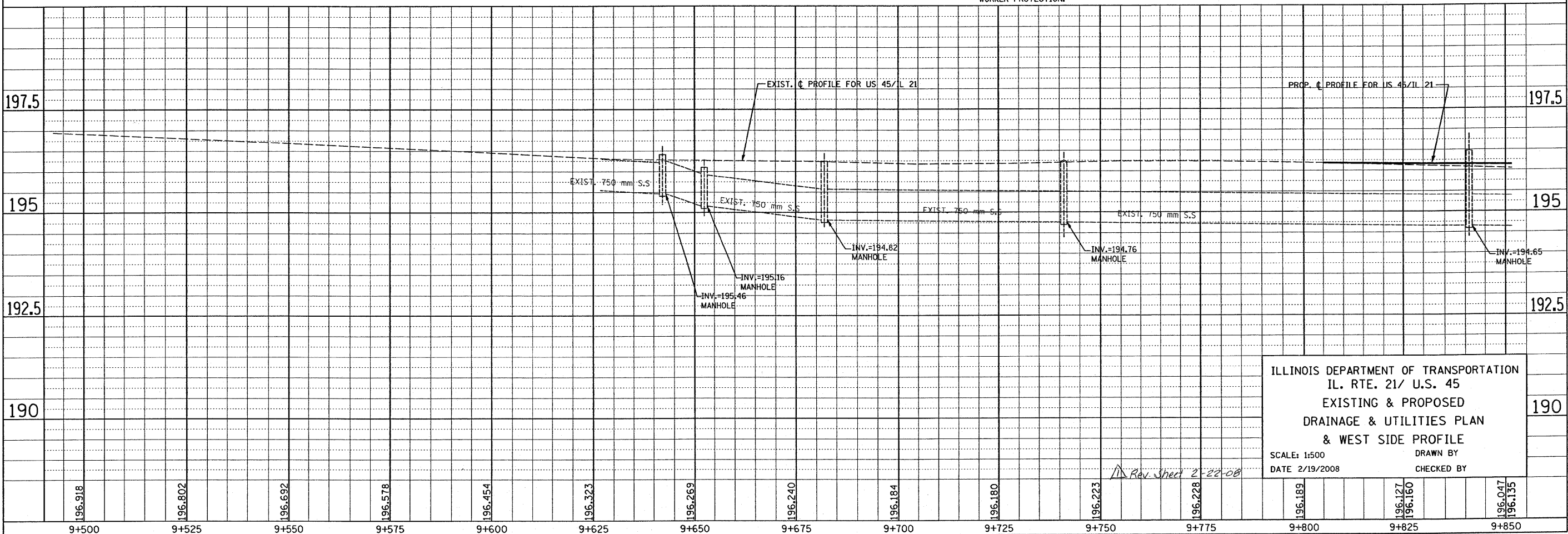
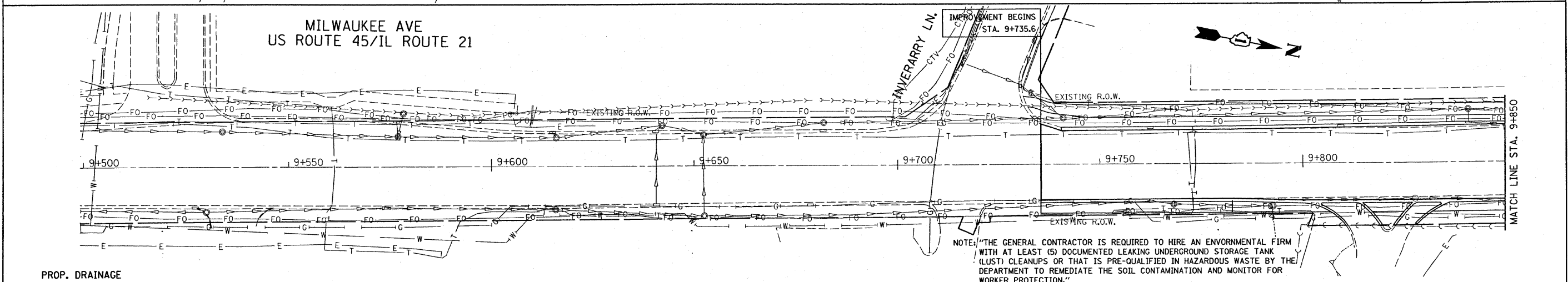
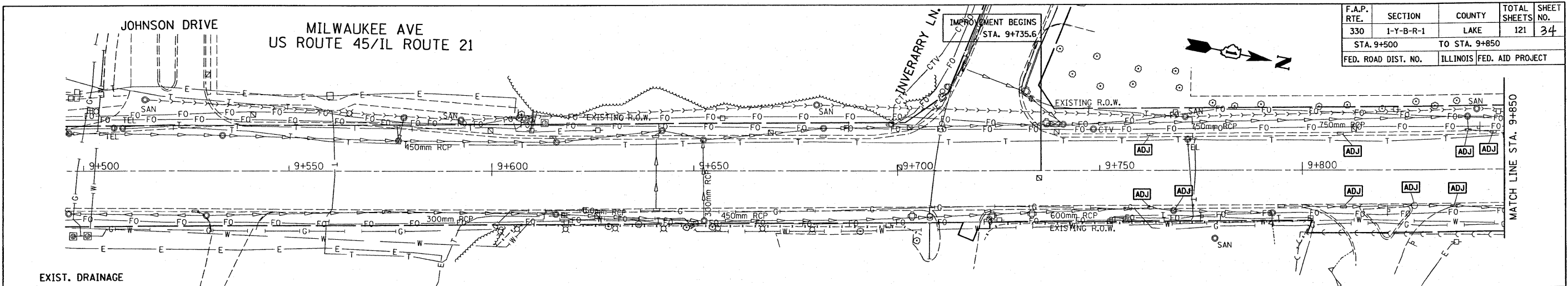
PROP. DRAINAGE



ILLINOIS DEPARTMENT OF TRANSPORTATION
 IL. RTE. 21/ U.S. 45
 EXISTING & PROPOSED
 DRAINAGE & UTILITIES PLAN
 & EAST SIDE PROFILE
 SCALE: 1:500
 DATE 2/19/2008
 DRAWN BY
 CHECKED BY

Rev. Sheet 2-22-08

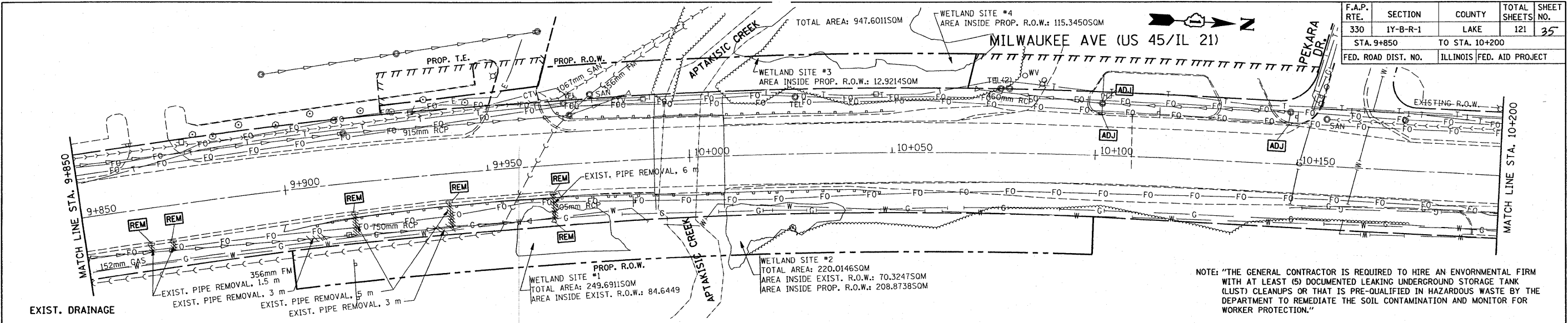
F.A.P. RTE.	SECTION	COUNTY	TOTAL SHEETS	SHEET NO.
330	1-Y-B-R-1	LAKE	121	34
STA. 9+500		TO STA. 9+850		
FED. ROAD DIST. NO.		ILLINOIS FED. AID PROJECT		



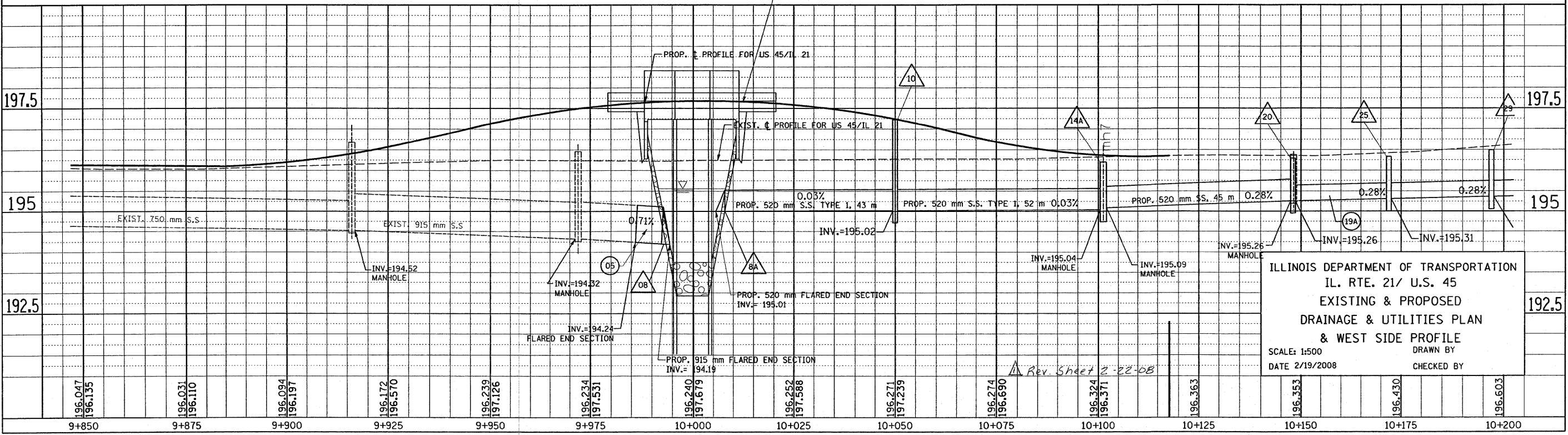
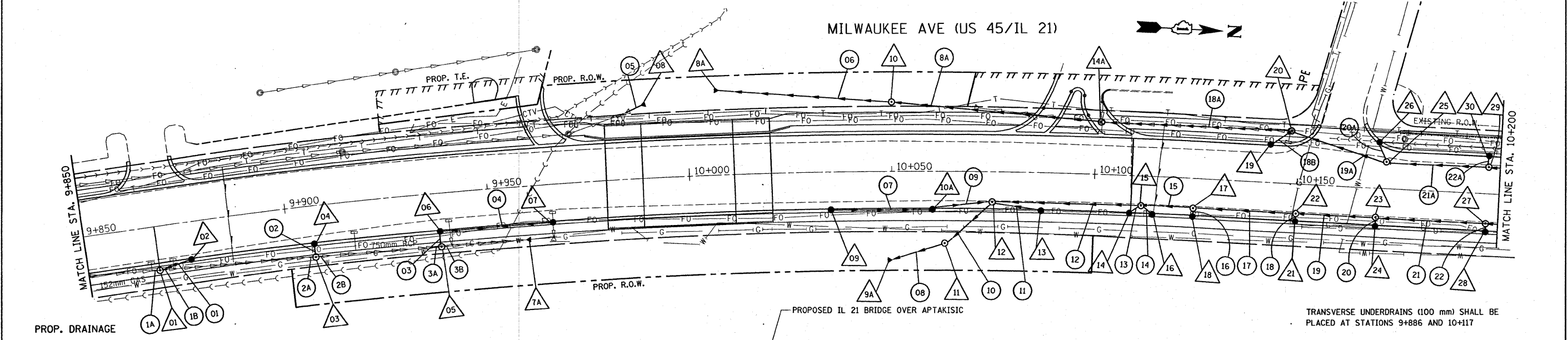
ILLINOIS DEPARTMENT OF TRANSPORTATION
 IL. RTE. 21/ U.S. 45
 EXISTING & PROPOSED
 DRAINAGE & UTILITIES PLAN
 & WEST SIDE PROFILE
 SCALE: 1:500
 DATE 2/19/2008
 DRAWN BY
 CHECKED BY

196.918	196.802	196.682	196.578	196.454	196.323	196.269	196.240	196.184	196.180	196.223	196.228	196.189	196.127	196.160	196.047	196.135
9+500	9+525	9+550	9+575	9+600	9+625	9+650	9+675	9+700	9+725	9+750	9+775	9+800	9+825	9+850		

F.A.P. RTE.	SECTION	COUNTY	TOTAL SHEETS	SHEET NO.
330	1Y-B-R-1	LAKE	121	35
STA. 9+850		TO STA. 10+200		
FED. ROAD DIST. NO.		ILLINOIS FED. AID PROJECT		



NOTE: "THE GENERAL CONTRACTOR IS REQUIRED TO HIRE AN ENVIRONMENTAL FIRM WITH AT LEAST (5) DOCUMENTED LEAKING UNDERGROUND STORAGE TANK (LUST) CLEANUPS OR THAT IS PRE-QUALIFIED IN HAZARDOUS WASTE BY THE DEPARTMENT TO REMEDIATE THE SOIL CONTAMINATION AND MONITOR FOR WORKER PROTECTION."



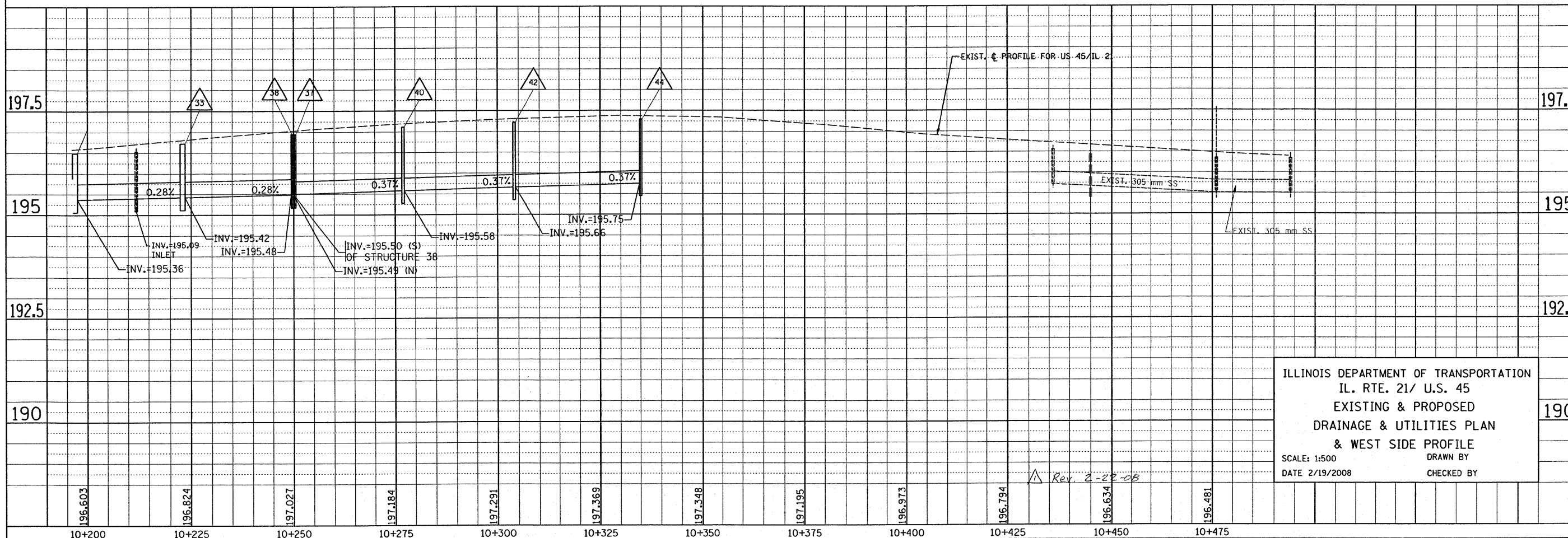
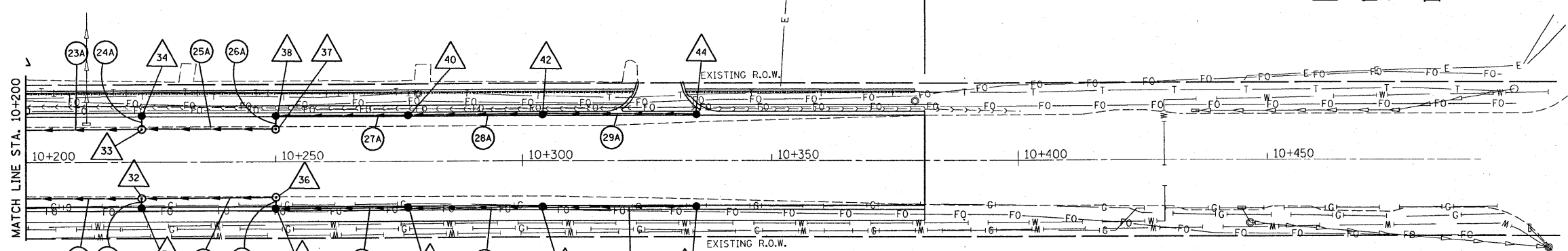
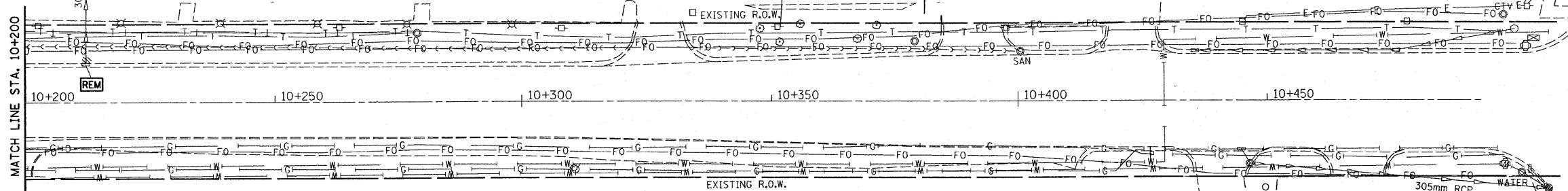
ILLINOIS DEPARTMENT OF TRANSPORTATION
 IL. RTE. 21/ U.S. 45
 EXISTING & PROPOSED
 DRAINAGE & UTILITIES PLAN
 & WEST SIDE PROFILE
 SCALE: 1:500
 DATE 2/19/2008
 DRAWN BY
 CHECKED BY

NOTE: "THE GENERAL CONTRACTOR IS REQUIRED TO HIRE AN ENVIRONMENTAL FIRM WITH AT LEAST (5) DOCUMENTED LEAKING UNDERGROUND STORAGE TANK (LUST) CLEANUPS OR THAT IS PRE-QUALIFIED IN HAZARDOUS WASTE BY THE DEPARTMENT TO REMEDIATE THE SOIL CONTAMINATION AND MONITOR FOR WORKER PROTECTION."

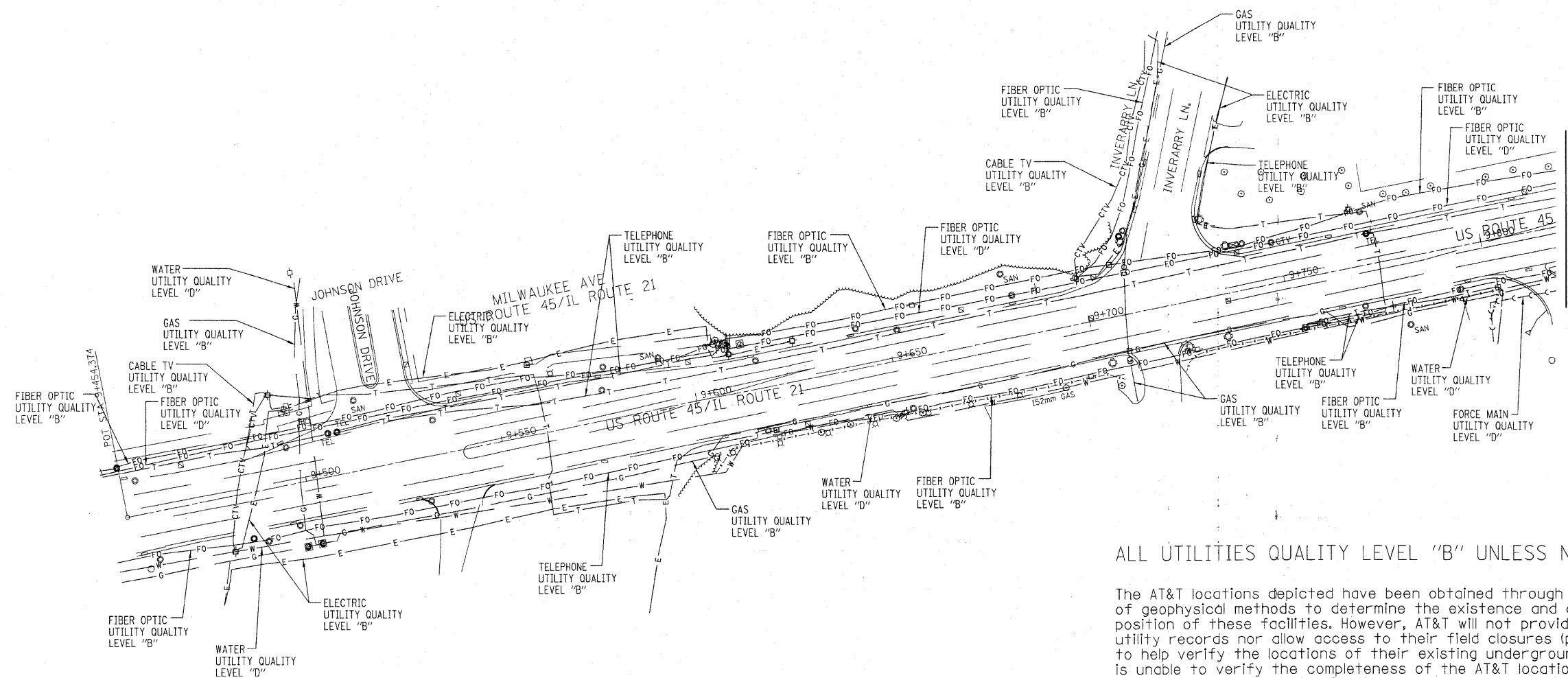
MILWAUKEE AVE (US 45/IL 21)

IMPROVEMENT ENDS STA. 10+381

F.A.P. RTE.	SECTION	COUNTY	TOTAL SHEETS	SHEET NO.
330	1Y-B-R-1	LAKE	121	36
STA. 10+200		TO STA. 10+381		
FED. ROAD DIST. NO.		ILLINOIS FED. AID PROJECT		



F.A. RTE.	SECTION	COUNTY	TOTAL SHEETS	SHEET NO.
	1Y-B-R-1	Lake	121	40
STA.	TO STA.			
FED. ROAD DIST. NO.	ILLINOIS	FED. AID PROJECT		



ALL UTILITIES QUALITY LEVEL "B" UNLESS NOTED OTHERWISE.

The AT&T locations depicted have been obtained through the application of geophysical methods to determine the existence and approximate horizontal position of these facilities. However, AT&T will not provide TBE Group, Inc. with utility records nor allow access to their field closures (pedestals/manholes etc.), to help verify the locations of their existing underground facilities. Therefore, TBE is unable to verify the completeness of the AT&T locations depicted in accordance with the CI/ASCE Standard 38-02.

The field representative from Adesta that was on-site would not provide or allow TBE Group, Inc. access to their field enclosures (Pedestals/Manholes etc.) to help verify the location of the underground fiber optic cable within the project limits. Therefore, TBE is unable to verify the location of the fiber optic cable and labeled the utility as Quality Level "D".




TBE GROUP, INC.
 CIVIL ENGINEERING * TRANSPORTATION * ENVIRONMENTAL
 * PLANNING * UTILITY ENGINEERING/LOCATING

IL09500177, 277, 282
 TBE PAGE NO: 1 of 3
 Checked by: *[Signature]*
 Utility Quality Level "A" : Test Hole
 Utility Quality Level "B" : Designating
 Utility Quality Level "D" : Records Research

— W —	— WATER
— CTV —	— CABLE TV
— T —	— TELEPHONE
— S —	— SEWER
— G —	— GAS
— FO —	— FIBER OPTIC
— E —	— ELECTRIC

Utilities shown in color on these plans as depicted in the legend have been investigated by TBE Group, Inc in accordance with SUE Industry Standards. All other information shown has been provided to TBE Group, Inc by others. TBE's SUE field designating was performed during the period 6-07-07 through 6-28-07. Test Holes were performed during the period 12-20-07 through 1-18-08. Changes to utilities after these dates may have been made and therefore may result in variances from this plan. Consideration should be given to updating this plan if deemed advisable prior to final design and construction.

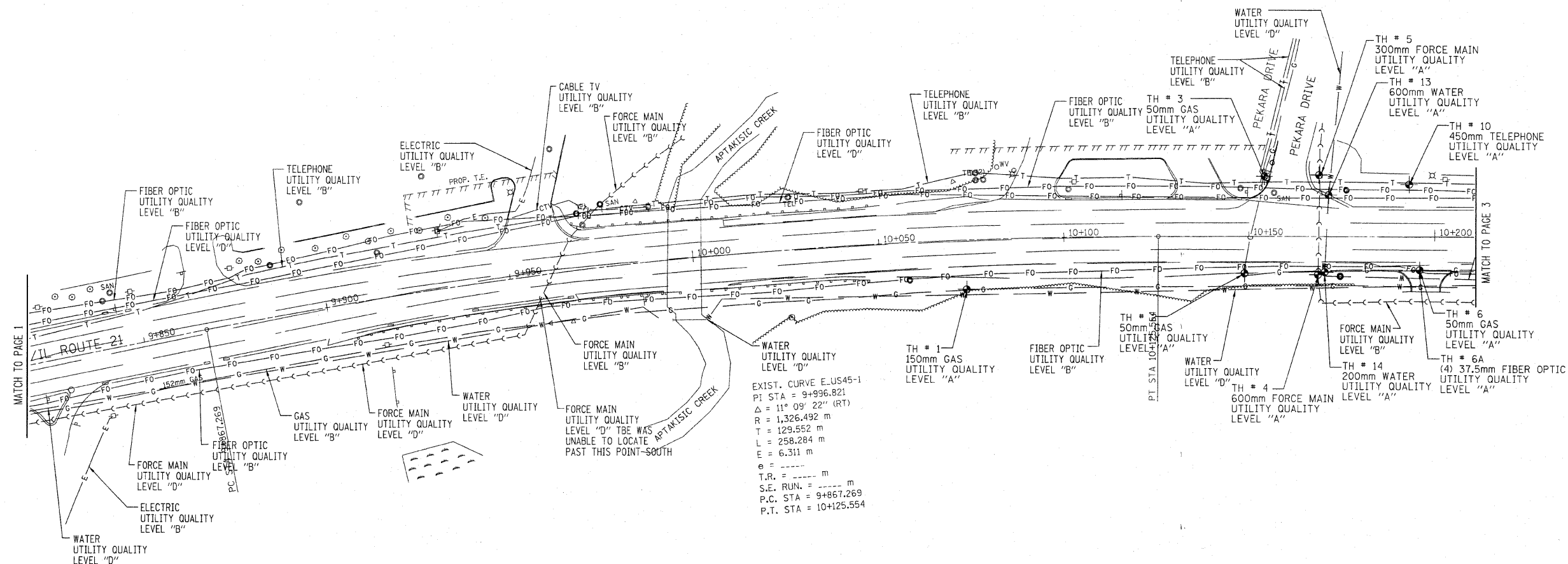
Rev Sheet E-22-08


 205 W. WACKER DRIVE
 SUITE 1020
 CHICAGO, IL 60606
 (312) 704-1970

REVISIONS	
NAME	DATE

ILLINOIS DEPARTMENT OF TRANSPORTATION
 SUE Investigation of Underground Utilities
 US 45/IL RT. 21 over Aptakisic Creek
 Buffalo Grove, IL.
 Lake County
 Contract No. 62032
 Section No. 1Y-B-R-1
 DRAWN BY : KLC
 SCALE : 1 : 600

F.A. RTE.	SECTION	COUNTY	TOTAL SHEETS	SHEET NO.
	1Y-B-R-1	Lake	121	41
STA.	TO STA.			
FED. ROAD DIST. NO.	ILLINOIS	FED. AID PROJECT		



EXIST. CURVE E-US45-1
 PI STA = 9+996.821
 $\Delta = 11^{\circ} 09' 22''$ (RT)
 R = 1,326.492 m
 T = 129.552 m
 L = 258.284 m
 E = 6.311 m
 e = ----- m
 T.R. = ----- m
 S.E. RUN. = ----- m
 P.C. STA = 9+867.269
 P.T. STA = 10+125.554

ALL UTILITIES QUALITY LEVEL "B" UNLESS NOTED OTHERWISE.

The AT&T locations depicted have been obtained through the application of geophysical methods to determine the existence and approximate horizontal position of these facilities. However, AT&T will not provide TBE Group, Inc. with utility records nor allow access to their field closures (pedestals/manholes etc.), to help verify the locations of their existing underground facilities. Therefore, TBE is unable to verify the completeness of the AT&T locations depicted in accordance with the CI/ASCE Standard 38-02.

The field representative from Adesta that was on-site would not provide or allow TBE Group, Inc. access to their field enclosures (Pedestals/Manholes etc.) to help verify the location of the underground fiber optic cable within the project limits. Therefore, TBE is unable to verify the location of the fiber optic cable and labeled the utility as Quality Level "D".

TBE GROUP, INC.
 CIVIL ENGINEERING * TRANSPORTATION * ENVIRONMENTAL
 * PLANNING * UTILITY ENGINEERING/LOCATING

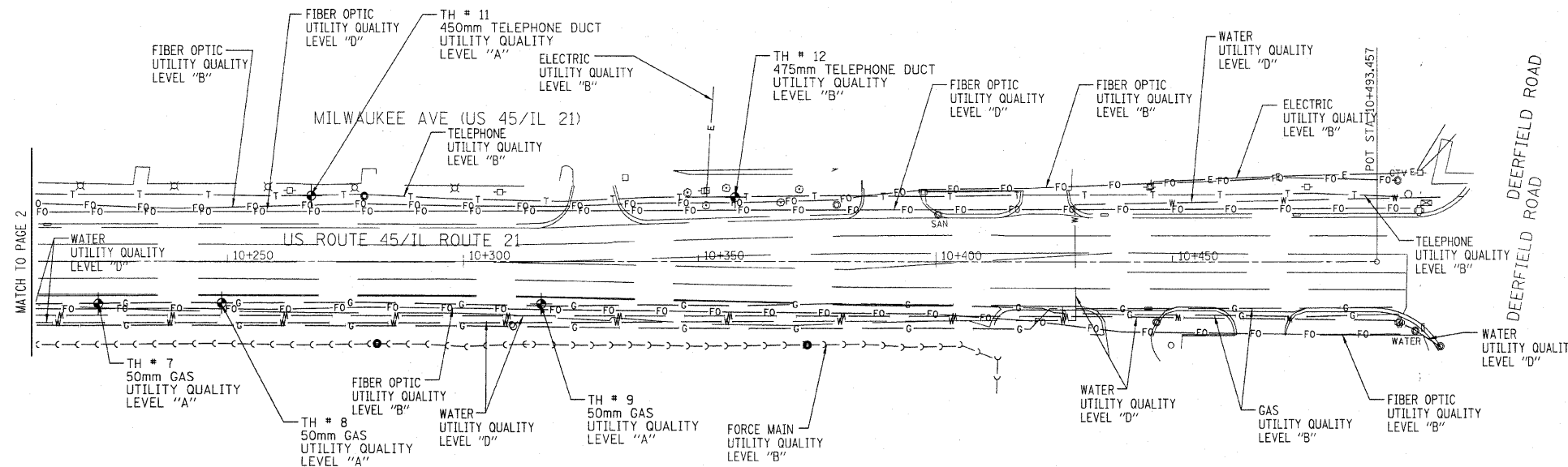
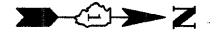
IL09500177, 277, 282
 TBE PAGE NO: 2 of 3
 Checked by: *[Signature]*
 Utility Quality Level "A" : Test Hole
 Utility Quality Level "B" : Designating
 Utility Quality Level "D" : Records Research

— W —	— WATER
— CTV —	— CABLE TV
— T —	— TELEPHONE
— S —	— SEWER
— G —	— GAS
— FO —	— FIBER OPTIC
— E —	— ELECTRIC

Utilities shown in color on these plans as depicted in the legend have been investigated by TBE Group, Inc in accordance with SUE Industry Standards. All other information shown has been provided to TBE Group, Inc by others. TBE's SUE field designating was performed during the period 6-07-07 through 6-28-07. Test Holes were performed during the period 12-20-07 through 1-18-08. Changes to utilities after these dates may have been made and therefore may result in variances from this plan. Consideration should be given to updating this plan if deemed advisable prior to final design and construction.
 Rev. Sheet 2-22-08

 205 W. WACKER DRIVE SUITE 1020 CHICAGO, IL 60606 (312) 704-1970	REVISIONS	ILLINOIS DEPARTMENT OF TRANSPORTATION SUE Investigation of Underground Utilities US 45/IL RT. 21 over Aptakasic Creek Buffalo Grove, IL. Lake County Contract No. 62032 Section No. 1Y-B-R-1 DRAWN BY : KLC SCALE : 1 : 600	
	NAME		DATE

F.A. RTE.	SECTION	COUNTY	TOTAL SHEETS	SHEET NO.
	1Y-B-R-1	Lake	121	42
STA.	TO STA.			
FED. ROAD DIST. NO.	ILLINOIS	FED. AID PROJECT		

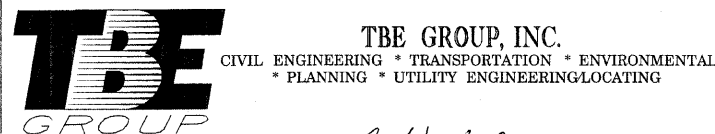


ALL UTILITIES QUALITY LEVEL "B" UNLESS NOTED OTHERWISE.

SCALE 1:500

The AT&T locations depicted have been obtained through the application of geophysical methods to determine the existence and approximate horizontal position of these facilities. However, AT&T will not provide TBE Group, Inc. with utility records nor allow access to their field closures (pedestals/manholes etc.), to help verify the locations of their existing underground facilities. Therefore, TBE is unable to verify the completeness of the AT&T locations depicted in accordance with the CI/ASCE Standard 38-02.

The field representative from Adesta that was on-site would not provide or allow TBE Group, Inc. access to their field enclosures (Pedestals/Manholes etc.) to help verify the location of the underground fiber optic cable within the project limits. Therefore, TBE is unable to verify the location of the fiber optic cable and labeled the utility as Quality Level "D".



TBE GROUP, INC.

CIVIL ENGINEERING * TRANSPORTATION * ENVIRONMENTAL
* PLANNING * UTILITY ENGINEERING/LOCATING

IL09500177, 277, 282

TBE PAGE NO: 3 of 3

Checked by: *[Signature]*
Utility Quality Level "A" : Test Hole
Utility Quality Level "B" : Designating
Utility Quality Level "D" : Records Research

— W —	— WATER
— CTV —	— CABLE TV
— T —	— TELEPHONE
— S —	— SEWER
— G —	— GAS
— FO —	— FIBER OPTIC
— E —	— ELECTRIC

Utilities shown in color on these plans as depicted in the legend have been investigated by TBE Group, Inc in accordance with SUE Industry Standards. All other information shown has been provided to TBE Group, Inc by others. TBE's SUE field designating was performed during the period 6-07-07 through 6-28-07. Test Holes were performed during the period 12-20-07 through 1-18-08. Changes to utilities after these dates may have been made and therefore may result in variances from this plan. Consideration should be given to updating this plan if deemed advisable prior to final design and construction.

Rev. 2-22-08

205 W. WACKER DRIVE
SUITE 1020
CHICAGO, IL 60606
(312) 704-1970

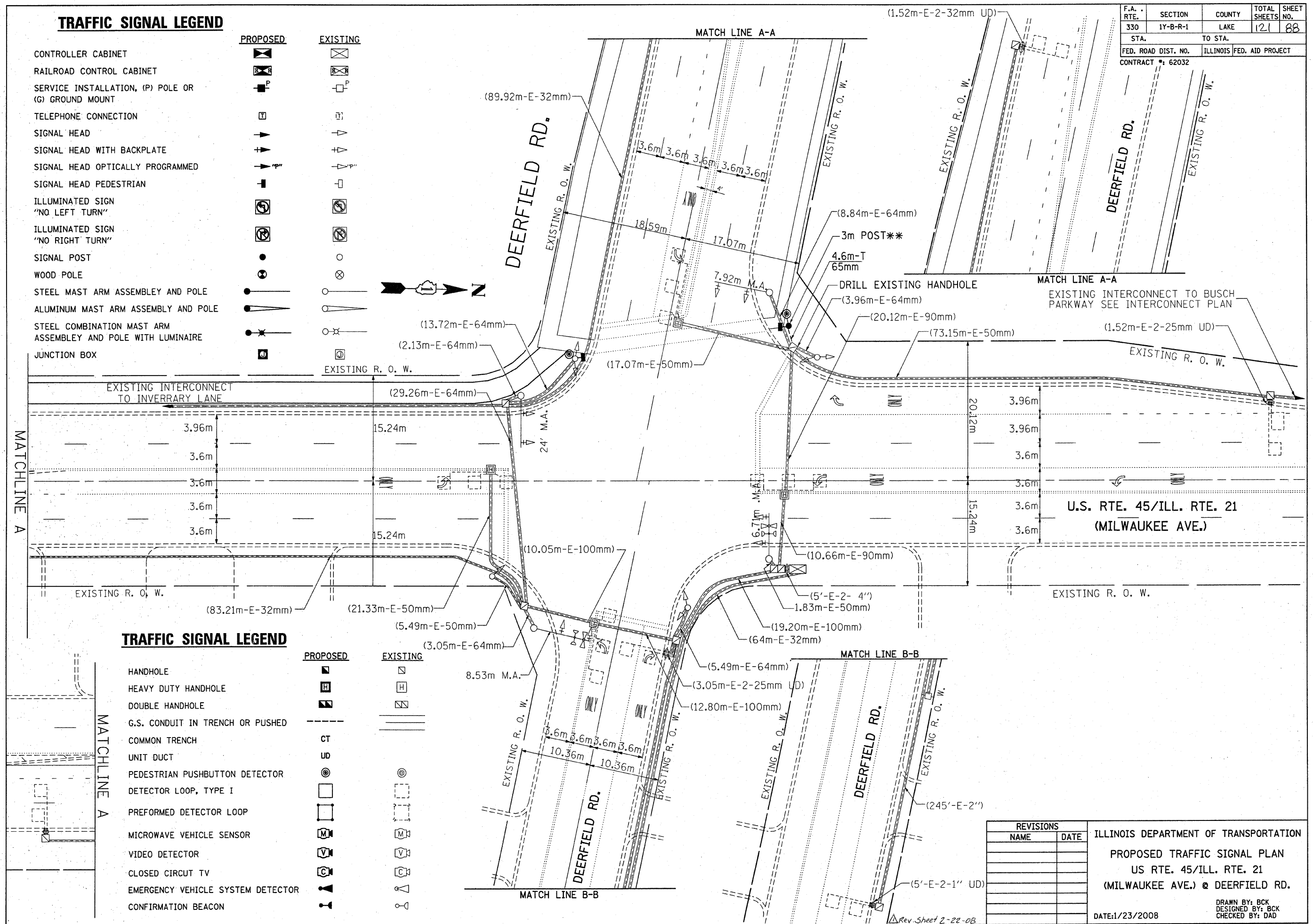
REVISIONS	
NAME	DATE

ILLINOIS DEPARTMENT OF TRANSPORTATION
SUE Investigation of Underground Utilities
US 45/IL RT. 21 over Aptakisic Creek
Buffalo Grove, IL
Lake County
Contract No. 62032
Section No. 1Y-B-R-1
DRAWN BY : KLC
SCALE : 1 : 600

TRAFFIC SIGNAL LEGEND

- | | | | |
|---|--|----------|--|
| CONTROLLER CABINET | | EXISTING | |
| RAILROAD CONTROL CABINET | | EXISTING | |
| SERVICE INSTALLATION, (P) POLE OR (G) GROUND MOUNT | | EXISTING | |
| TELEPHONE CONNECTION | | EXISTING | |
| SIGNAL HEAD | | EXISTING | |
| SIGNAL HEAD WITH BACKPLATE | | EXISTING | |
| SIGNAL HEAD OPTICALLY PROGRAMMED | | EXISTING | |
| SIGNAL HEAD PEDESTRIAN | | EXISTING | |
| ILLUMINATED SIGN "NO LEFT TURN" | | EXISTING | |
| ILLUMINATED SIGN "NO RIGHT TURN" | | EXISTING | |
| SIGNAL POST | | EXISTING | |
| WOOD POLE | | EXISTING | |
| STEEL MAST ARM ASSEMBLY AND POLE | | EXISTING | |
| ALUMINUM MAST ARM ASSEMBLY AND POLE | | EXISTING | |
| STEEL COMBINATION MAST ARM ASSEMBLY AND POLE WITH LUMINAIRE | | EXISTING | |
| JUNCTION BOX | | EXISTING | |

F.A. RTE.	SECTION	COUNTY	TOTAL SHEETS	SHEET NO.
330	1Y-B-R-1	LAKE	121	88
STA.		TO STA.		
FED. ROAD DIST. NO.		ILLINOIS FED. AID PROJECT		
CONTRACT #: 62032				



TRAFFIC SIGNAL LEGEND

- | | | | |
|-----------------------------------|--|----------|--|
| HANDHOLE | | EXISTING | |
| HEAVY DUTY HANDHOLE | | EXISTING | |
| DOUBLE HANDHOLE | | EXISTING | |
| G.S. CONDUIT IN TRENCH OR PUSHED | | EXISTING | |
| COMMON TRENCH | | EXISTING | |
| UNIT DUCT | | EXISTING | |
| PEDESTRIAN PUSHBUTTON DETECTOR | | EXISTING | |
| DETECTOR LOOP, TYPE I | | EXISTING | |
| PERFORMED DETECTOR LOOP | | EXISTING | |
| MICROWAVE VEHICLE SENSOR | | EXISTING | |
| VIDEO DETECTOR | | EXISTING | |
| CLOSED CIRCUIT TV | | EXISTING | |
| EMERGENCY VEHICLE SYSTEM DETECTOR | | EXISTING | |
| CONFIRMATION BEACON | | EXISTING | |

REVISIONS	
NAME	DATE

ILLINOIS DEPARTMENT OF TRANSPORTATION
 PROPOSED TRAFFIC SIGNAL PLAN
 US RTE. 45/ILL. RTE. 21
 (MILWAUKEE AVE.) @ DEERFIELD RD.
 DATE: 1/23/2008
 DRAWN BY: BCK
 DESIGNED BY: BCK
 CHECKED BY: DAD

Rev. Sheet 2-22-08

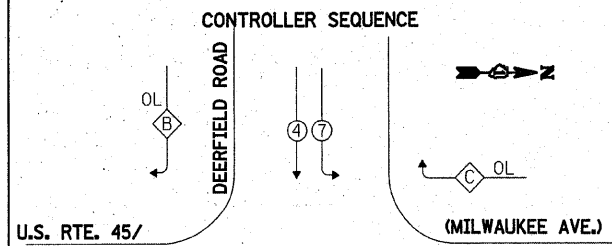
F.A. RTE.	SECTION	COUNTY	TOTAL SHEETS	SHEET NO.
330	1Y-B-R-1	LAKE	121	89
STA.		TO STA.		
FED. ROAD DIST. NO.		ILLINOIS FED. AID PROJECT		
CONTRACT #: 62032				

TEMPORARY CABLE DIAGRAM LEGEND

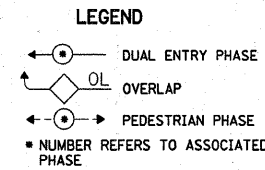
	PROPOSED	EXISTING
TEMPORARY CONTROLLER CABINET		
TEMPORARY SERVICE INSTALLATION, (P) POLE OR (G) GROUND MOUNT		
TEMPORARY TRAFFIC SIGNAL SECTION OR PEDESTRIAN SIGNAL SECTION, 12" (300 mm)		
12" (300 MM) PEDESTRIAN SIGNAL SECTION		
ELECTRIC CABLE IN CONDUIT, NO. 14, UNLESS OTHERWISE NOTED. NUMBER OF CONDUCTORS AS NOTED		
PEDESTRIAN PUSHBUTTON DETECTOR		
VEHICLE DETECTOR, INDUCTION LOOP		
MICROWAVE VEHICLE SENSOR		
VIDEO DETECTOR		
CLOSED CIRCUIT TV		
EMERGENCY VEHICLE SYSTEM DETECTOR		
CONFIRMATION BEACON		
WIRELESS INTERCONNECT ANTENNA		

SCHEDULE OF QUANTITIES

QUANTITY	UNIT	ITEM
1	EACH	TEMP. WIRELESS INTERCONNECT



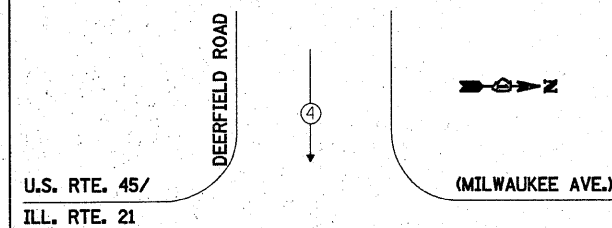
U.S. RTE. 45/
ILL. RTE. 21



PHASE DESIGNATION DIAGRAM

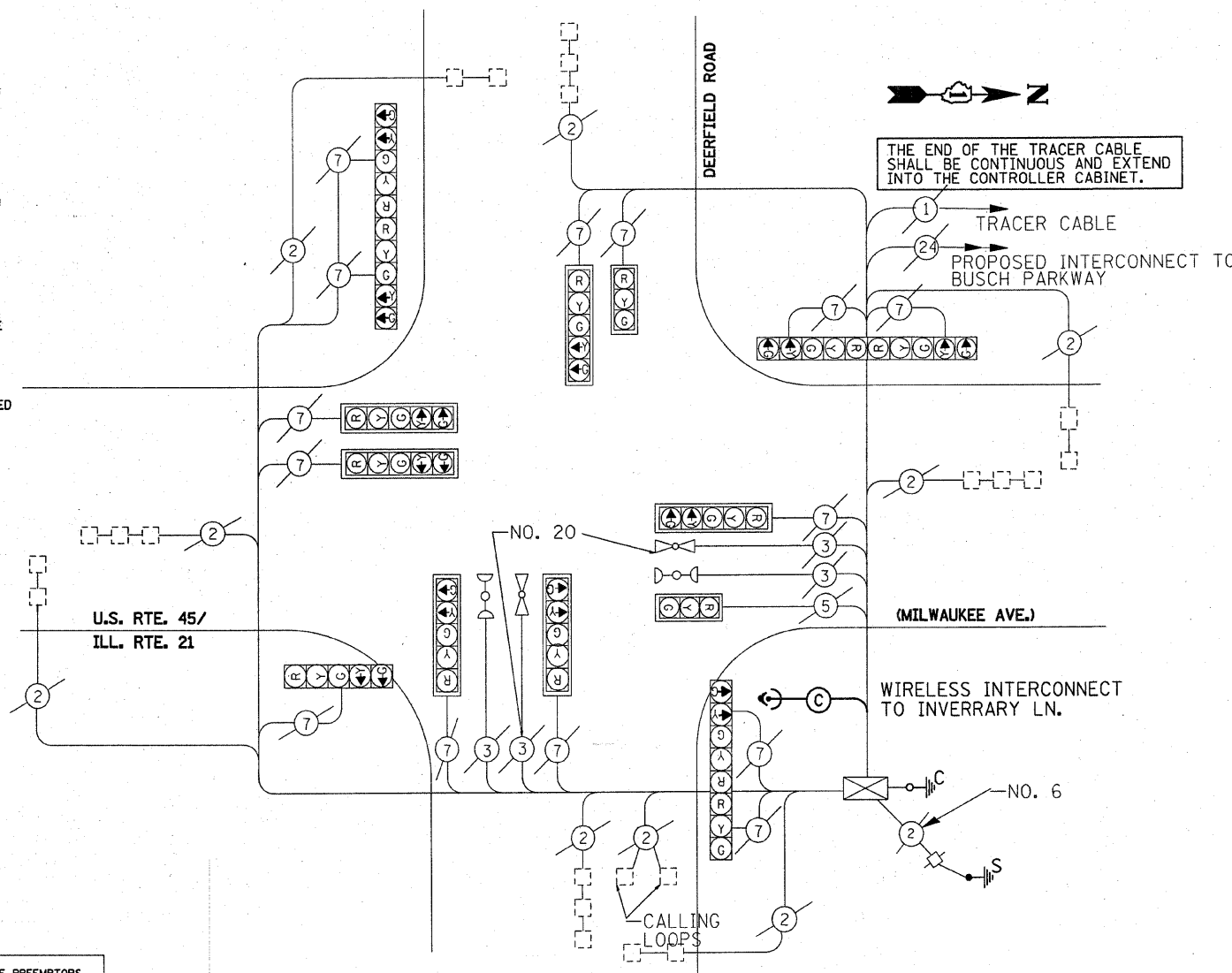
OVERLAP LETTER	PERMISSIVE PHASE	PROTECTED PHASE
B	= 6	+ 4 7 + 5

EMERGENCY VEHICLE PREEMPTION SEQUENCE



U.S. RTE. 45/
ILL. RTE. 21

PROPOSED EMERGENCY VEHICLE PREEMPTORS		
EMERGENCY VEHICLE PREEMPTOR	3	4
MOVEMENT		



THE END OF THE TRACER CABLE SHALL BE CONTINUOUS AND EXTEND INTO THE CONTROLLER CABINET.

TRACER CABLE
PROPOSED INTERCONNECT TO BUSCH PARKWAY

WIRELESS INTERCONNECT TO INVERRY LN.

I.D.O.T. TRAFFIC SIGNAL INSTALLATION ELECTRICAL SERVICE REQUIREMENTS					TOTAL WATTAGE
TYPE	NO. LAMPS	WATTAGE (INCAND.)	LED	* OPERATION	
SIGNAL (RED)	15	135	17	0.50	1012.50
(YELLOW)	15	135	25	0.25	506.25
(GREEN)	15	135	15	0.25	506.25
ARROW	24	135	12	0.10	324.00
PED. SIGNAL		90	25	1.00	
CONTROLLER	1	100	100	1.00	100.00
ILLUM. SIGN		84		0.05	
FLASHER				0.50	
ENERGY COSTS TO:				TOTAL =	2449.00
ILLINOIS DEPARTMENT OF TRANSPORTATION 201 WEST CENTER COURT SCHAUMBURG, ILLINOIS 60196-1096					
ENERGY SUPPLY CONTACT: _____					
PHONE: _____					
COMPANY: _____					

FOUNDATION (DEPTH)	FT. (m)	CABLE SLACK	FT. (m)	VERTICAL	FT. (m)
TYPE A - POST	4 (1.2)	HANDHOLE	6.5 (2.0)	ALL FOUNDATIONS	3.5 (1.0)
D - CONTROLLER	4 (1.2)	DOUBLE HANDHOLE	13 (4.0)	MAST ARM (L) POLE	20'-H-2=
E - M. ARM POLE		SIGNAL POST	2 (1.0)	(6m-H-0.6m)=	
24" (600mm)	10 (3.0)	CONTROLLER CAB.	1 (0.5)	BRACKET MOUNTED	13 (4.0)
30" (750mm)	15 (4.6)	FIBER OPTIC	13 (4.0)	PED. PUSHBUTTON	4 (1.2)
36" (900mm)	15 (4.6)	ELECTRIC SERVICE	1 (0.5)	ELECTRIC SERVICE	13.5 (4.1)
		GROUND CABLE	1 (0.5)	SERVICE TO GROUND	13.5 (4.1)
				POST MOUNTED	6 (1.8)

REVISIONS	
NAME	DATE

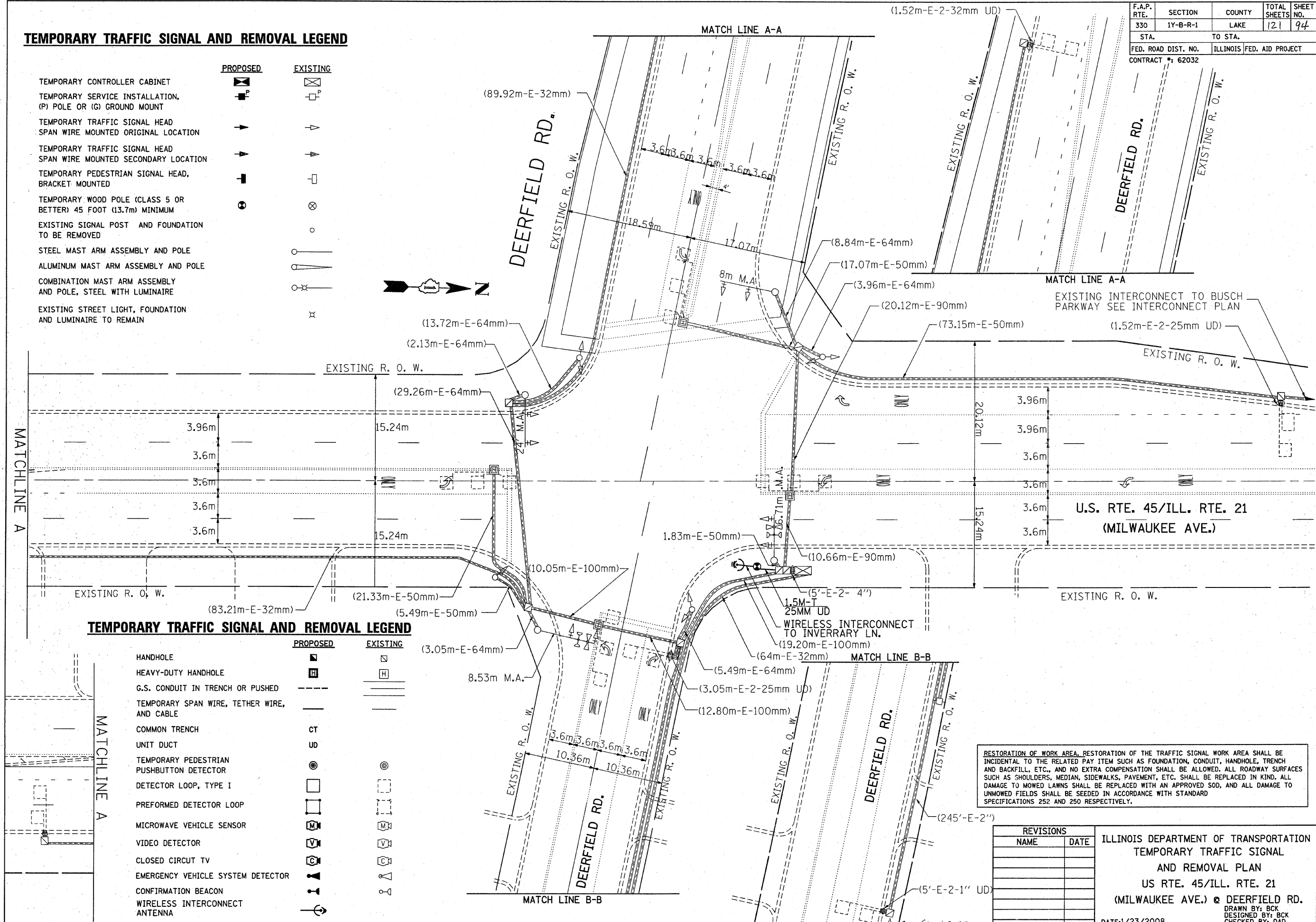
ILLINOIS DEPARTMENT OF TRANSPORTATION
 TEMPORARY CABLE PLAN
 US RTE. 45/ILL. RTE. 21
 (MILWAUKEE AVE.) @ DEERFIELD RD.
 DATE: 1/23/2008
 DRAWN BY: BCK
 DESIGNED BY: BCK
 CHECKED BY: DAD

Rev. Sheet 2-22-08

F.A.P. RTE.	SECTION	COUNTY	TOTAL SHEETS	SHEET NO.
330	1Y-B-R-1	LAKE	121	94
STA.		TO STA.		
FED. ROAD DIST. NO.		ILLINOIS FED. AID PROJECT		
CONTRACT #: 62032				

TEMPORARY TRAFFIC SIGNAL AND REMOVAL LEGEND

- | | | |
|--|--|--|
| TEMPORARY CONTROLLER CABINET | | |
| TEMPORARY SERVICE INSTALLATION, (P) POLE OR (G) GROUND MOUNT | | |
| TEMPORARY TRAFFIC SIGNAL HEAD SPAN WIRE MOUNTED ORIGINAL LOCATION | | |
| TEMPORARY TRAFFIC SIGNAL HEAD SPAN WIRE MOUNTED SECONDARY LOCATION | | |
| TEMPORARY PEDESTRIAN SIGNAL HEAD, BRACKET MOUNTED | | |
| TEMPORARY WOOD POLE (CLASS 5 OR BETTER) 45 FOOT (13.7m) MINIMUM | | |
| EXISTING SIGNAL POST AND FOUNDATION TO BE REMOVED | | |
| STEEL MAST ARM ASSEMBLY AND POLE | | |
| ALUMINUM MAST ARM ASSEMBLY AND POLE | | |
| COMBINATION MAST ARM ASSEMBLY AND POLE, STEEL WITH LUMINAIRE | | |
| EXISTING STREET LIGHT, FOUNDATION AND LUMINAIRE TO REMAIN | | |



TEMPORARY TRAFFIC SIGNAL AND REMOVAL LEGEND

- | | | |
|---|--|--|
| HANDHOLE | | |
| HEAVY-DUTY HANDHOLE | | |
| G.S. CONDUIT IN TRENCH OR PUSHED AND CABLE | | |
| TEMPORARY SPAN WIRE, TETHER WIRE, AND CABLE | | |
| COMMON TRENCH | | |
| UNIT DUCT | | |
| TEMPORARY PEDESTRIAN PUSHBUTTON DETECTOR | | |
| DETECTOR LOOP, TYPE I | | |
| PREFORMED DETECTOR LOOP | | |
| MICROWAVE VEHICLE SENSOR | | |
| VIDEO DETECTOR | | |
| CLOSED CIRCUIT TV | | |
| EMERGENCY VEHICLE SYSTEM DETECTOR | | |
| CONFIRMATION BEACON | | |
| WIRELESS INTERCONNECT ANTENNA | | |

RESTORATION OF WORK AREA, RESTORATION OF THE TRAFFIC SIGNAL WORK AREA SHALL BE INCIDENTAL TO THE RELATED PAY ITEM SUCH AS FOUNDATION, CONDUIT, HANDHOLE, TRENCH AND BACKFILL, ETC., AND NO EXTRA COMPENSATION SHALL BE ALLOWED. ALL ROADWAY SURFACES SUCH AS SHOULDERS, MEDIAN, SIDEWALKS, PAVEMENT, ETC. SHALL BE REPLACED IN KIND. ALL DAMAGE TO MOWED LAWNS SHALL BE REPLACED WITH AN APPROVED SOD, AND ALL DAMAGE TO UNMOWED FIELDS SHALL BE SEEDED IN ACCORDANCE WITH STANDARD SPECIFICATIONS 252 AND 250 RESPECTIVELY.

REVISIONS	
NAME	DATE

ILLINOIS DEPARTMENT OF TRANSPORTATION
 TEMPORARY TRAFFIC SIGNAL
 AND REMOVAL PLAN
 US RTE. 45/ILL. RTE. 21
 (MILWAUKEE AVE.) @ DEERFIELD RD.
 DRAWN BY: BCK
 DESIGNED BY: BCK
 CHECKED BY: DAD
 DATE: 1/23/2008

Rev. Sheet 2-22-08