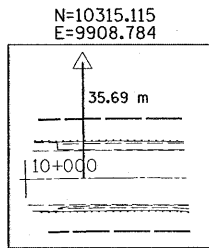
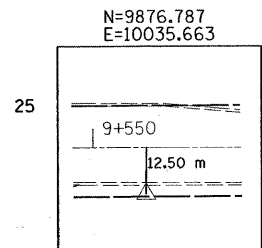
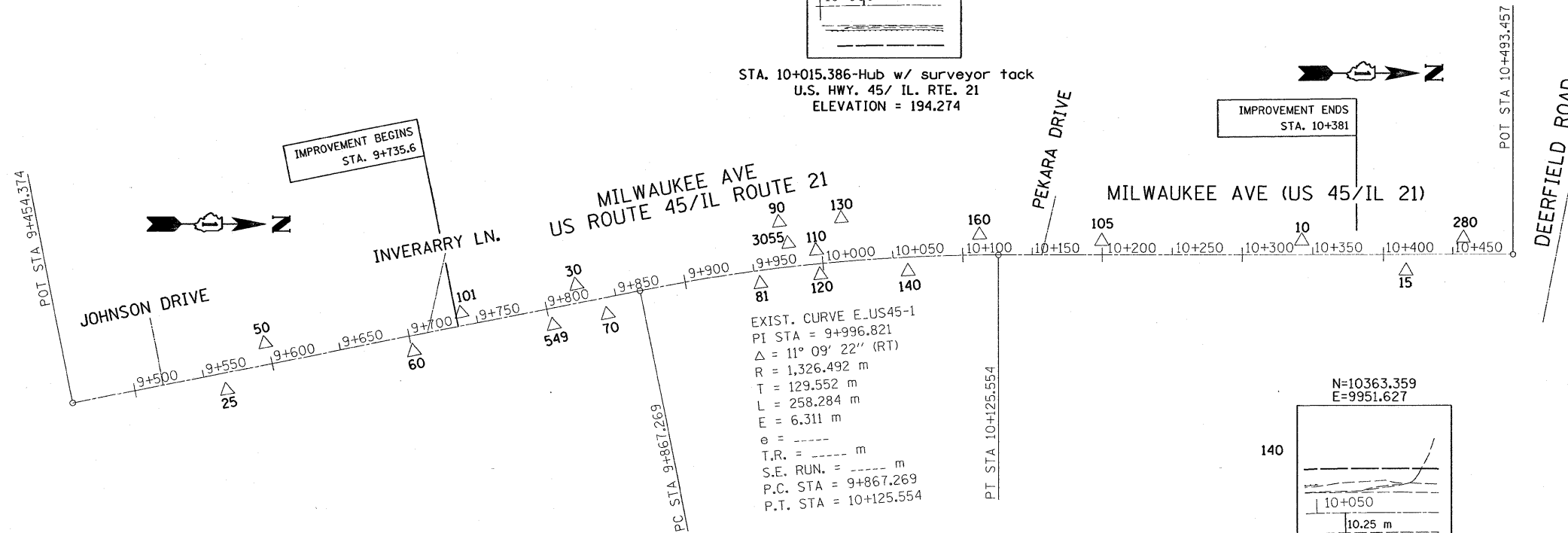


F.A.P. RTE.	SECTION	COUNTY	TOTAL SHEETS	SHEET NO.
330	1Y-B-R-1	LAKE	121	//
STA.		TO STA.		
FED. ROAD DIST. NO.		ILLINOIS	FED. AID PROJECT	

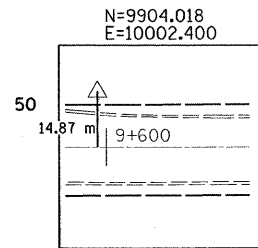


STA. 10+015.386-Hub w/ surveyor tack  
U.S. HWY. 45/ IL. RTE. 21  
ELEVATION = 194.274

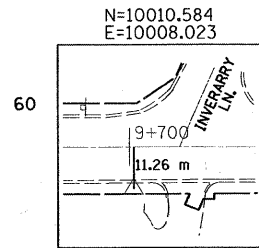
IMPROVEMENT ENDS  
STA. 10+381



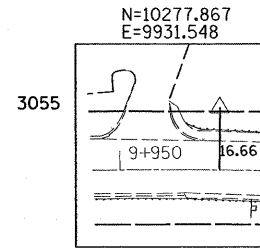
STA. 9+564.464-Hub w/ surveyor tack  
U.S. HWY. 45/ IL. RTE. 21  
ELEVATION = 196.564



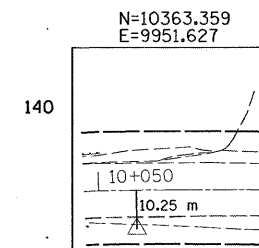
STA. 9+597.614-"X" cut in sidewalk  
U.S. HWY. 45/ IL. RTE. 21  
ELEVATION = 196.731



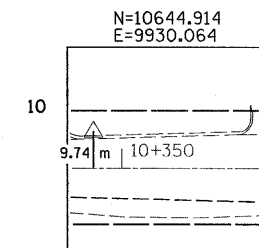
STA. 9+701.081-Rebar  
U.S. HWY. 45/ IL. RTE. 21  
ELEVATION = 196.229



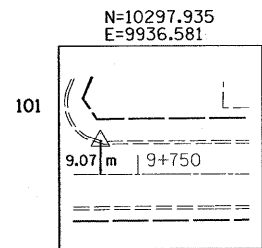
STA. 9+976.867-TBM-"X" cut top San MH #8  
U.S. HWY. 45/ IL. RTE. 21  
ELEVATION = 196.252



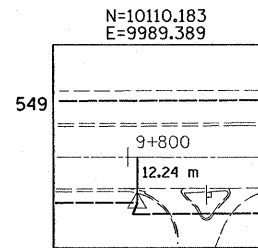
STA. 10+060.269-Hub w/ surveyor tack  
U.S. HWY. 45/ IL. RTE. 21  
ELEVATION = 195.795



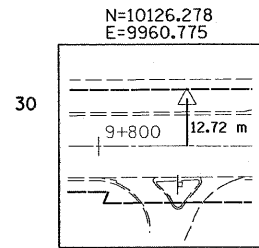
STA. 10+342.353-Hub w/ surveyor tack  
U.S. HWY. 45/ IL. RTE. 21  
ELEVATION = 197.308



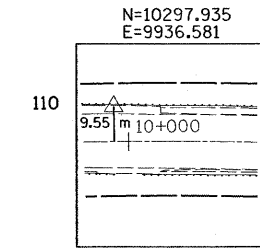
STA. 9+739.768-TBM-"□" cut NE corner conc.  
U.S. HWY. 45/ IL. RTE. 21  
ELEVATION = 196.238



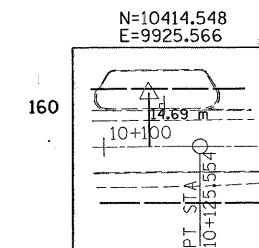
STA. 9+802.403-Rebar (Property Corner)  
U.S. HWY. 45/ IL. RTE. 21  
ELEVATION = 195.948



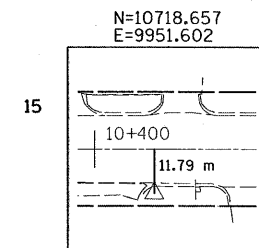
STA. 9+823.728-Hub w/ surveyor tack  
U.S. HWY. 45/ IL. RTE. 21  
ELEVATION = 196.503



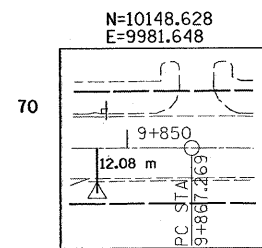
STA. 9+996.100-PK Nail  
U.S. HWY. 45/ IL. RTE. 21  
ELEVATION = 196.457



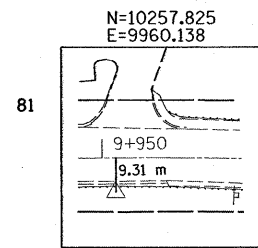
STA. 10+112.131-Hub w/ surveyor tack  
U.S. HWY. 45/ IL. RTE. 21  
ELEVATION = 196.587



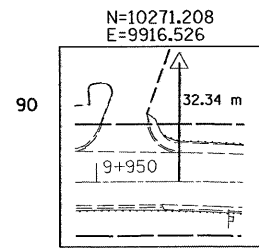
STA. 10+416.097-Hub w/ surveyor tack  
U.S. HWY. 45/ IL. RTE. 21  
ELEVATION = 196.743



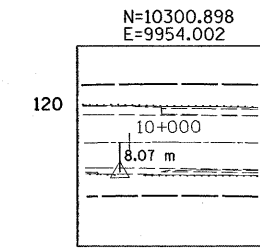
STA. 9+841.619-Rebar (property Corner)  
U.S. HWY. 45/ IL. RTE. 21  
ELEVATION = 195.810



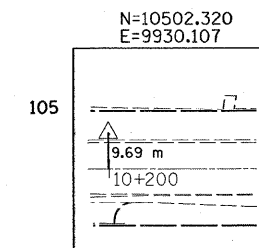
STA. 9+953.581-Hub w/ surveyor tack  
U.S. HWY. 45/ IL. RTE. 21  
ELEVATION = 195.933



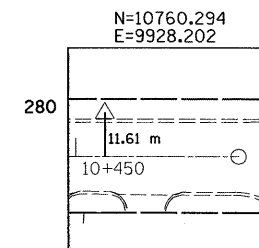
STA. 9+972.037-Hub w/ surveyor tack  
U.S. HWY. 45/ IL. RTE. 21  
ELEVATION = 195.825



STA. 9+997.360-PK Nail  
U.S. HWY. 45/ IL. RTE. 21  
ELEVATION = 196.048



STA. 10+199.759-Hub w/ surveyor tack  
(Point 5 of Phase I survey, Strand & Assoc.)  
U.S. HWY. 45/ IL. RTE. 21  
ELEVATION = 196.542



STA. 10+457.732-Hub w/ surveyor tack  
U.S. HWY. 45/ IL. RTE. 21  
ELEVATION = 196.552

REVISIONS	
NAME	DATE

ILLINOIS DEPARTMENT OF TRANSPORTATION  
  
IL. RTE. 21/ U.S. 45  
ALIGNMENT, TIES,  
& BENCHMARKS PLAN  
  
DRAWN BY  
CHECKED BY  
DATE 12/28/2007