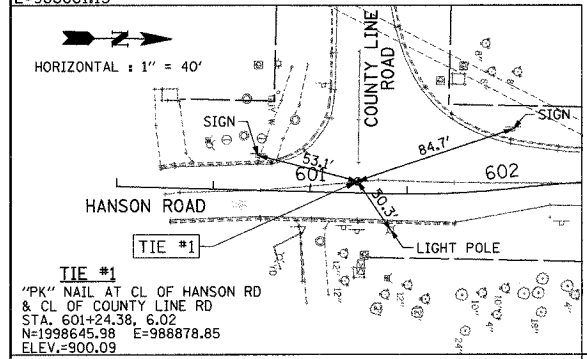
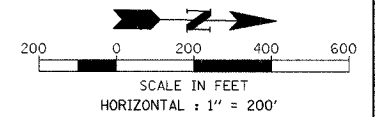
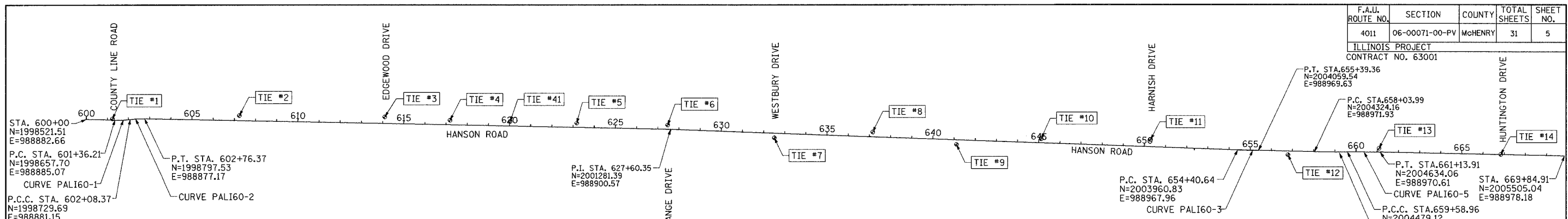
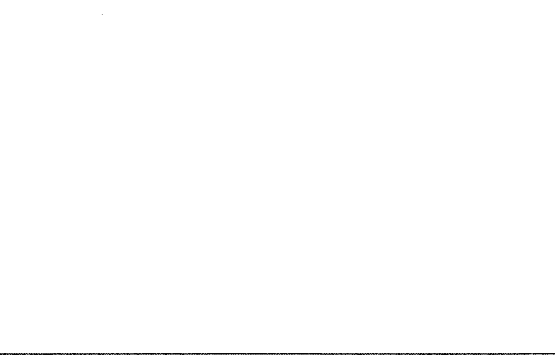


F.A.U. ROUTE NO.	SECTION	COUNTY	TOTAL SHEETS	SHEET NO.
4011	06-00071-00-PV	McHENRY	31	5

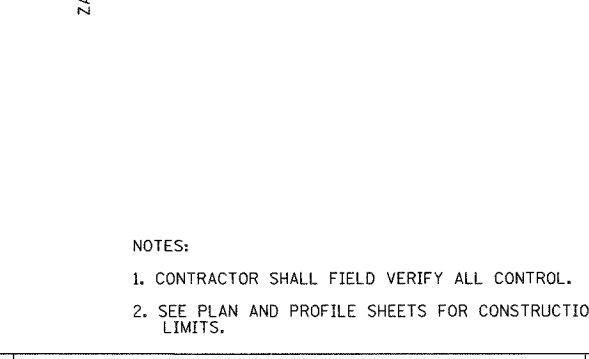
ILLINOIS PROJECT  
CONTRACT NO. 63001



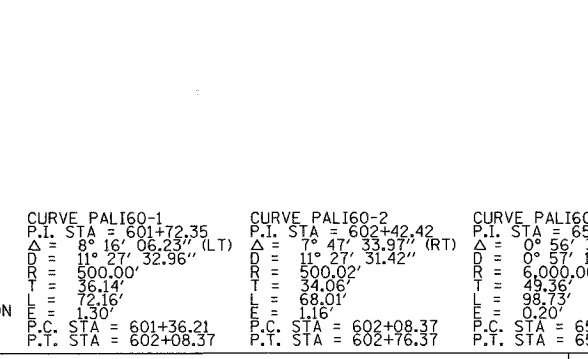
**TIE #1**  
"PK" NAIL AT CL OF HANSON RD & CL OF COUNTY LINE RD  
STA. 601+24.38, 6.02 LT  
N=199845.98 E=988878.85  
ELEV.=900.09



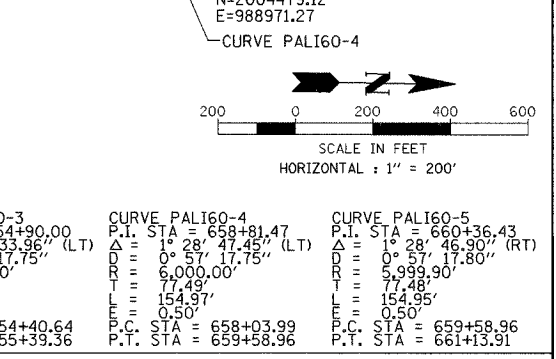
**TIE #2**  
REBAR 11.8' WEST OF WEST EDGE OF HANSON RD  
STA. 607+23.73, 24.13 LT  
N=1999245.09 E=988857.26  
ELEV.=885.56



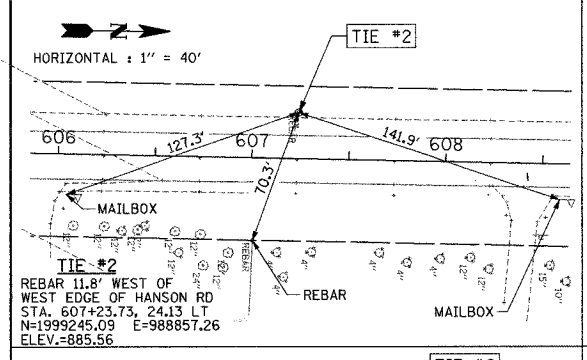
**TIE #3**  
"PK" NAIL AT CL OF EDGEWOOD DR 33' WEST OF CL OF HANSON RD  
STA. 614+09.93, 31.55 LT  
N=1999331.33 E=988856.30  
ELEV.=860.94



**TIE #4**  
REBAR 10' WEST OF WEST EDGE OF HANSON RD  
STA. 617+19.03, 21.98 LT  
N=2000240.32 E=988868.81  
ELEV.=857.69



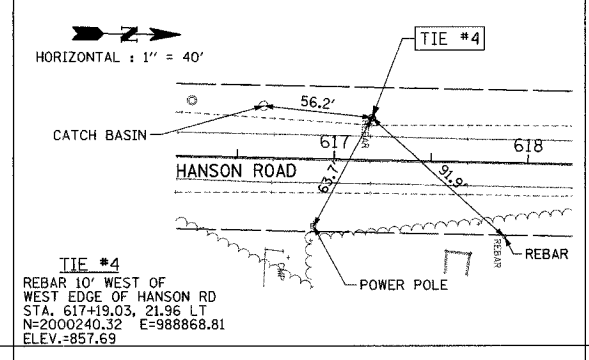
**TIE #5**  
REBAR 10' WEST OF WEST EDGE OF HANSON RD  
STA. 623+17.43, 20.53 LT  
N=2000838.69 E=988875.87  
ELEV.=870.55



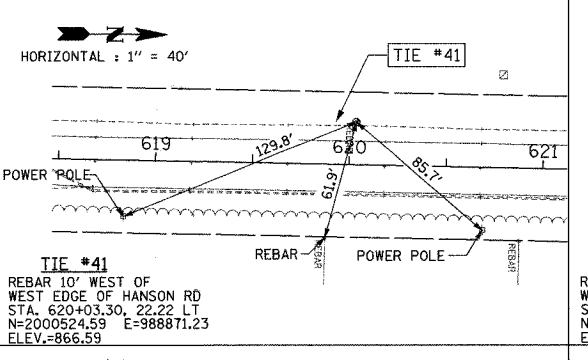
**TIE #6**  
SPIKE AT CL OF ZANGE DR EXTENDED 9' WEST OF WEST EDGE OF HANSON RD  
STA. 627+46.93, 20.09 LT  
N=2001268.17 E=988880.36  
ELEV.=872.75



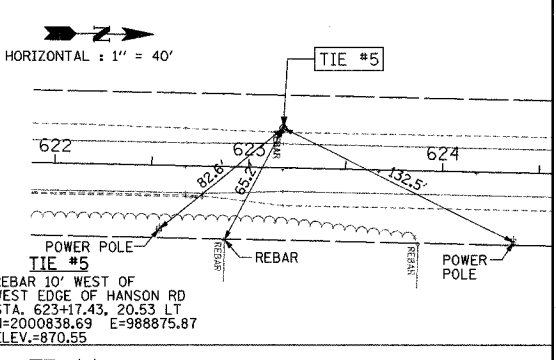
**TIE #7**  
SPIKE AT CL OF WESTBURY DR EXTENDED 10' EAST OF EAST EDGE OF HANSON RD  
STA. 632+52.41, 21.47 RT  
N=2001772.76 E=9888934.41  
ELEV.=882.64



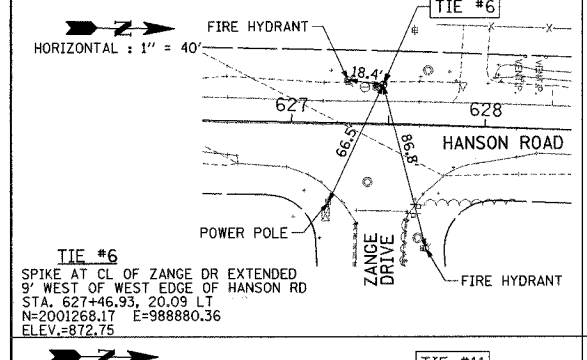
**TIE #8**  
REBAR 10' WEST OF WEST EDGE OF HANSON RD  
STA. 637+15.67, 22.48 LT  
N=2002236.98 E=988902.11  
ELEV.=879.12



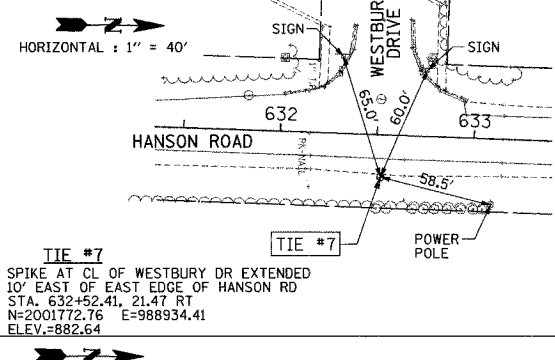
**TIE #9**  
REBAR 10' EAST OF EAST EDGE OF HANSON RD  
STA. 641+12.82, 21.74 RT  
N=2002632.89 E=988956.31  
ELEV.=886.93



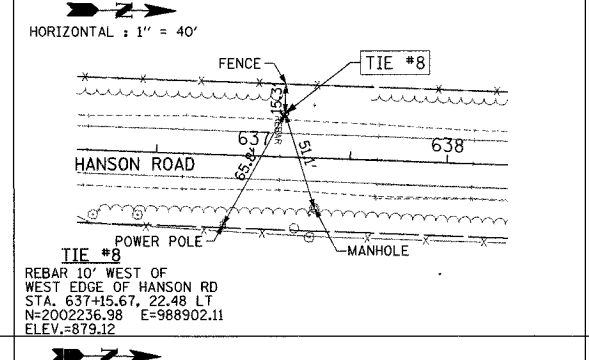
**TIE #10**  
REBAR 8' WEST OF WEST EDGE OF HANSON RD  
STA. 645+11.69, 19.03 LT  
N=2003032.66 E=988925.58  
ELEV.=887.26



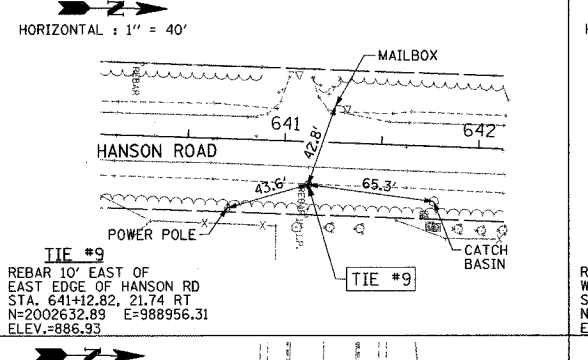
**TIE #11**  
"PK" NAIL AT CL OF HARNISH DR & 35' WEST OF CL OF HANSON RD  
STA. 650+28.21, 33.67 LT  
N=2003549.38 E=988923.93  
ELEV.=859.99



**TIE #12**  
REBAR 8' EAST OF EAST EDGE OF HANSON RD  
STA. 656+78.91, 17.50 RT  
N=2004198.93 E=988988.34  
ELEV.=831.30



**TIE #13**  
REBAR 7' WEST OF WEST EDGE OF HANSON RD  
STA. 661+08.18, 17.81 LT  
N=2004198.93 E=988952.76  
ELEV.=836.65



**TIE #14**  
"PK" NAIL AT CL OF HANSON RD AND CL OF HUNTINGTON DR  
STA. 666+84.38, 0.72 LT  
N=2004198.93 E=988974.84  
ELEV.=867.10

- NOTES:  
1. CONTRACTOR SHALL FIELD VERIFY ALL CONTROL.  
2. SEE PLAN AND PROFILE SHEETS FOR CONSTRUCTION LIMITS.

CURVE PALI60-1	CURVE PALI60-2	CURVE PALI60-3	CURVE PALI60-4	CURVE PALI60-5
P.I. STA = 601+72.35 Δ = 8° 16' 06.25" (LT) D = 11° 27' 32.96" R = 500.00' T = 36.14' L = 72.16' P.C. STA = 601+36.21 P.T. STA = 602+08.37	P.I. STA = 602+42.42 Δ = 7° 47' 33.97" (RT) D = 11° 27' 31.42" R = 500.02' T = 34.06' L = 68.01' P.C. STA = 602+08.37 P.T. STA = 602+76.37	P.I. STA = 654+90.00 Δ = 0° 56' 33.96" (LT) D = 0° 57' 17.75" R = 6,000.00' T = 49.36' L = 98.73' P.C. STA = 654+40.64 P.T. STA = 655+39.36	P.I. STA = 658+81.47 Δ = 1° 28' 47.45" (LT) D = 0° 57' 17.75" R = 6,000.00' T = 77.48' L = 154.97' P.C. STA = 658+03.99 P.T. STA = 659+58.96	P.I. STA = 660+36.43 Δ = 0° 28' 46.90" (RT) D = 0° 57' 17.80" R = 5,999.90' T = 74.48' L = 154.95' P.C. STA = 659+58.96 P.T. STA = 661+13.91

REVISIONS	NAME	DATE

**HANSON ROAD IMPROVEMENTS**  
COUNTY LINE ROAD TO EDGEWOOD DRIVE  
ALIGNMENT AND TIES  
DATE: 12-18-07  
DRAWN BY: AJR  
CHECKED BY: MAY  
GRAEF, ANHALT, SCHLOEMER & ASSOCIATES, INC.  
CHICAGO, ILLINOIS