

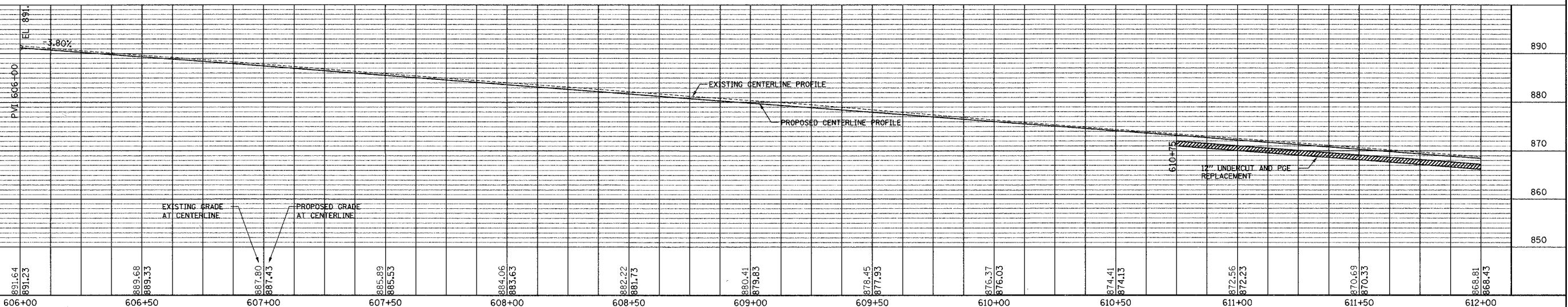
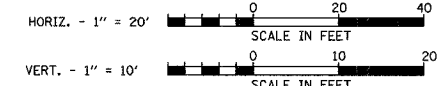
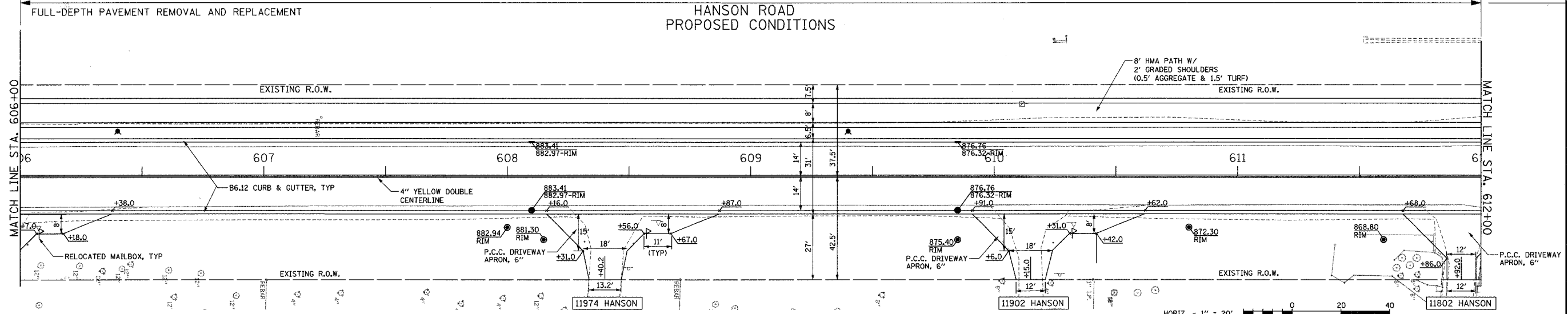
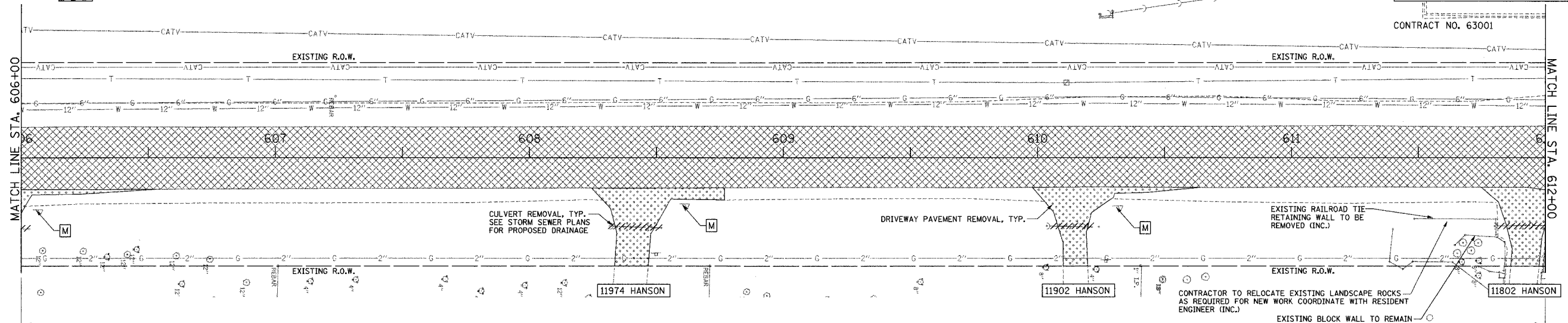
- LEGEND:**
- PAVEMENT REMOVAL
 - DRIVEWAY PAVEMENT REMOVAL
 - HMA PATH REMOVAL
 - CULVERT/STORM SEWER REMOVAL
 - 2" HMA SURFACE REMOVAL
 - SIDEWALK REMOVAL
 - MAILBOX TO BE RELOCATED
 - SIGN TO BE RELOCATED (INC.)

HANSON ROAD
EXISTING CONDITIONS

F.A.J. ROUTE NO.	SECTION	COUNTY	TOTAL SHEETS	SHEET NO.
4011	06-00071-00-PV	McHENRY	31	8

ILLINOIS PROJECT

CONTRACT NO. 63001



PLAN AND PROFILE

HANSON ROAD STA. 606+00 TO STA. 612+00