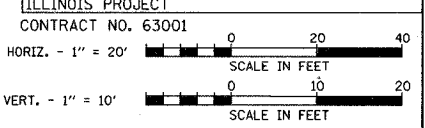


STRUCTURE NO	LOCATION STATION	OFFSET	STRUCTURE TYPE	FRAME & LID OR GRATE	RIM ELEVATION	INVERT ELEVATION NORTH	INVERT ELEVATION SOUTH	INVERT ELEVATION EAST	INVERT ELEVATION WEST
AM-8	612+70.0	26.0 FT RT	MH TY A 4 FT DIA	EJIW 6527	864.70	860.00	860.16	860.10	860.10
A-8A	612+70.0	14.0 FT RT	CB TY A 4 FT DIA	EJIW 7010 - M4	865.49			860.90	861.00
A-8B	612+70.0	14.0 FT RT	INLET TY A 2 FT DIA	EJIW 7010 - M4	865.49			862.45	
AM-9	613+70.0	26.0 FT RT	MH TY A 4 FT DIA	EJIW 6527	859.75	854.40	854.50	856.65	854.45
A-9A	613+93.0	36.0 FT RT	CB TY A 4 FT DIA	EJIW 7010 - M4	860.00			857.75	856.85
A-9B	613+65.2	16.4 FT LT	CB TY A 4 FT DIA	EJIW 7010 - M4	861.90	857.84		857.75	858.04
A-9C	613+65.0	34 FT LT	INLET TY A 2 FT DIA	EJIW 6527	861.90			858.10	
A-9D	613+85.8	33.0 FT LT	INLET TY A 2 FT DIA	EJIW 7010 M-3	861.20		857.95		
AM-10	614+70.0	0 FT	MH TY A 4 FT DIA	EJIW 1050 CL	859.11	853.30	853.40	853.35	853.35
A-10A	614+70.0	20.3 FT RT	CB TY A 4 FT DIA	EJIW 7010 - M4	858.68			853.85	854.20
A-10B	614+70.0	14 FT LT	CB TY A 4 FT DIA	EJIW 7010 - M4	858.80			853.85	
AM-11	616+43.0	0 FT	MH TY A 6 FT	EJIW 1050 CL	857.61	842.56	850.25	842.31	842.90
AM-12	616+68.0	0 FT	MH TY A 6 FT	EJIW 1050 CL	857.72	852.80 (PLUG)	842.67	842.92 (VIF)	842.90 (VIF)

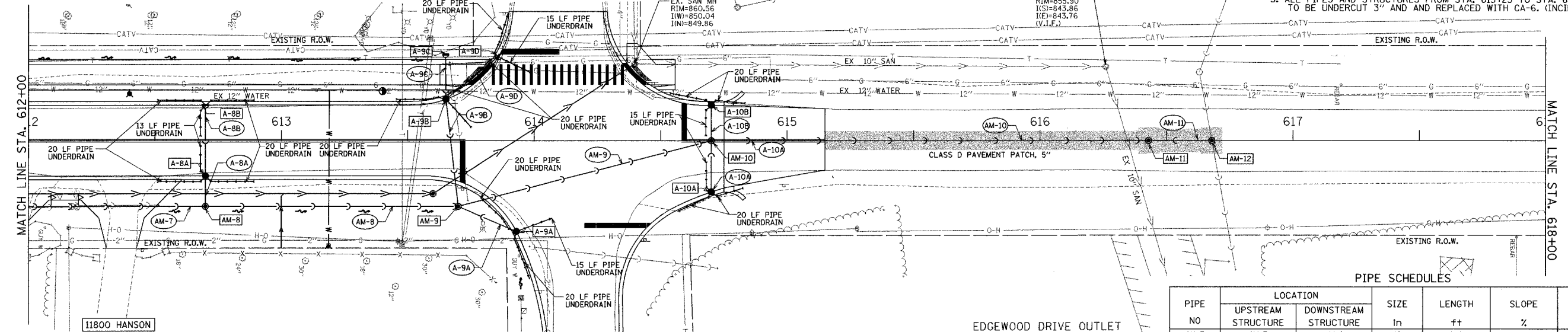
STATION	STATION	OFFSET	PIPE 4" PVC UNDERDRAIN (FT)
612+51	612+70	LT	20
612+51	612+70	RT	20
612+68	612+70	LT	13
612+68	612+70	RT	13
612+70	612+89	LT	20
612+70	612+89	RT	20
613+45	613+65	RT	20
613+65	613+75	LT	20
613+65	613+75	RT	15
613+76	613+86	LT	20

STATION	STATION	OFFSET	PIPE 4" PVC UNDERDRAIN (FT)
613+78	613+93	RT	20
613+86	613+98	LT	15
613+86	613+98	RT	20
613+98	613+98	RT	20
613+98	614+07	RT	15
614+53	614+70	LT	20
614+57	614+70	RT	20
614+68	614+70	LT	15
614+68	614+70	RT	15
614+70	614+83	LT	20
614+70	614+83	RT	20

F.A.U. ROUTE NO.	SECTION	COUNTY	TOTAL SHEETS	SHEET NO.
4011	06-00071-00-PV	McHENRY	31	13



- NOTES:
- ALL CURB LINE STRUCTURE LOCATIONS & ELEVATIONS ARE INDICATED AT THE EDGE OF PAVEMENT. ALL OTHER STRUCTURES ARE INDICATED AT THEIR CENTER.
  - ALL PIPE LENGTHS ARE INDICATED TO INSIDE WALL OF STRUCTURE.
  - ALL PIPES AND STRUCTURES FROM STA. 613+25 TO STA. 617+00 ARE TO BE UNDERCUT 3" AND AND REPLACED WITH CA-6. (INCIDENTAL)

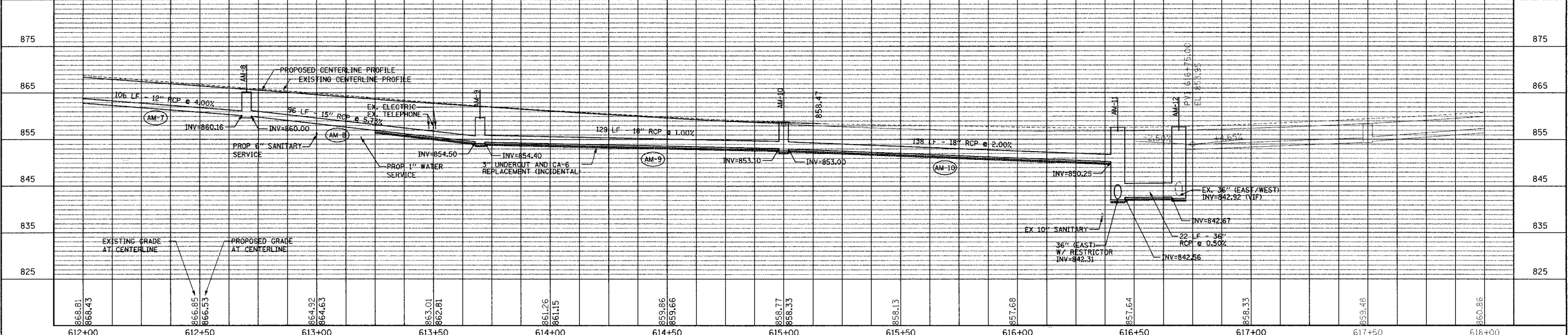


CONFLICT RESOLUTION CHARTS

PIPE NO	LOCATION		UPPER PIPE		LOWER PIPE	
	STATION	OFFSET	TYPE	BOTTOM ELEVATION	TYPE	TOP ELEVATION
A-8A	612+70.0	21.0 FT RT	PROP 12" STORM	860.40	PROP 8" SANITARY	857.57
AM-8	613+00.0	26.0 FT RT	PROP 15" STORM	858.40	PROP 6" SAN SER	856.47
AM-8	613+19.0	26.0 FT RT	PROP 15" STORM	857.31	PROP 1" WATER SER	855.60
AM-8	613+48.0	26.0 FT RT	EX TELEPHONE	857.35	PROP 15" STORM	856.88
AM-8	613+50.0	26.0 FT RT	EX TELEPHONE	857.35	PROP 15" STORM	856.77
AM-8	613+51.0	26.0 FT RT	EX ELECTRIC	857.35	PROP 15" STORM	856.71
A-9B	613+68.8	15.3 FT RT	PROP 12" STORM	855.19	PROP 8" SANITARY	853.93

PIPE NO	LOCATION		SIZE In	LENGTH ft	SLOPE %	TRENCH BACKFILL cu yd
	UPSTREAM STRUCTURE	DOWNSTREAM STRUCTURE				
AM-7	AM-7	AM-8	12	106	4.00	23.0
A-8A	A-8A	AM-8	12	8	10.00	1.6
A-8B	A-8B	A-8A	12	27	5.37	6.1
AM-8	AM-8	AM-9	15	96	5.73	0.0
A-9A	A-9A	AM-9	12	21	0.95	0.6
A-9B	A-9B	AM-9	12	39	8.50	12.9
A-9C	A-9C	A-9B	12	13	0.50	3.5
A-9D	A-9D	A-9B	12	23	0.50	6.9
AM-9	AM-9	AM-10	18	99	1.00	45.8
A-10A	A-10A	AM-10	12	17	5.00	6.3
A-10B	A-10B	AM-10	12	10	5.00	4.0
AM-10	AM-10	AM-11	18	169	2.00	152.5
AM-11	AM-11	AM-11	36	19	0.50	60.7

HANSON ROAD STORM SEWER PLANS



PLAN AND PROFILE

HANSON ROAD STA. 612+00 TO STA. 618+00