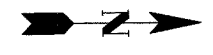
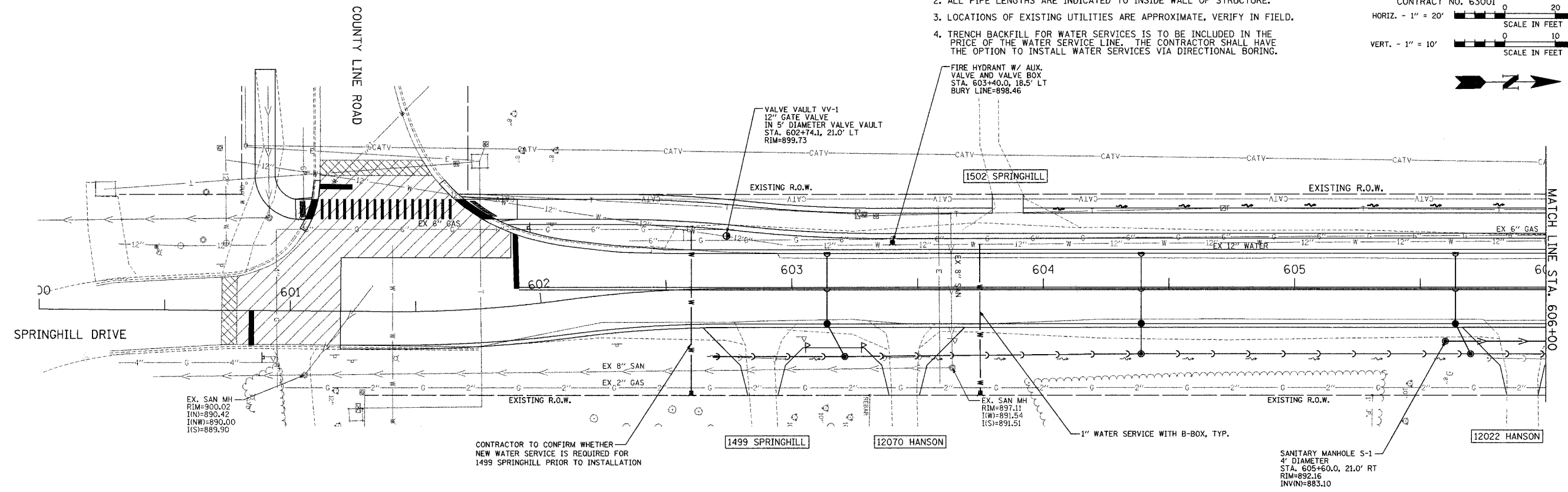


F.A.U. ROUTE NO.	SECTION	COUNTY	TOTAL SHEETS	SHEET NO.
4011	06-00071-00-PV	McHENRY	31	14

ILLINOIS PROJECT
 CONTRACT NO. 63001
 HORIZ. - 1" = 20'
 VERT. - 1" = 10'



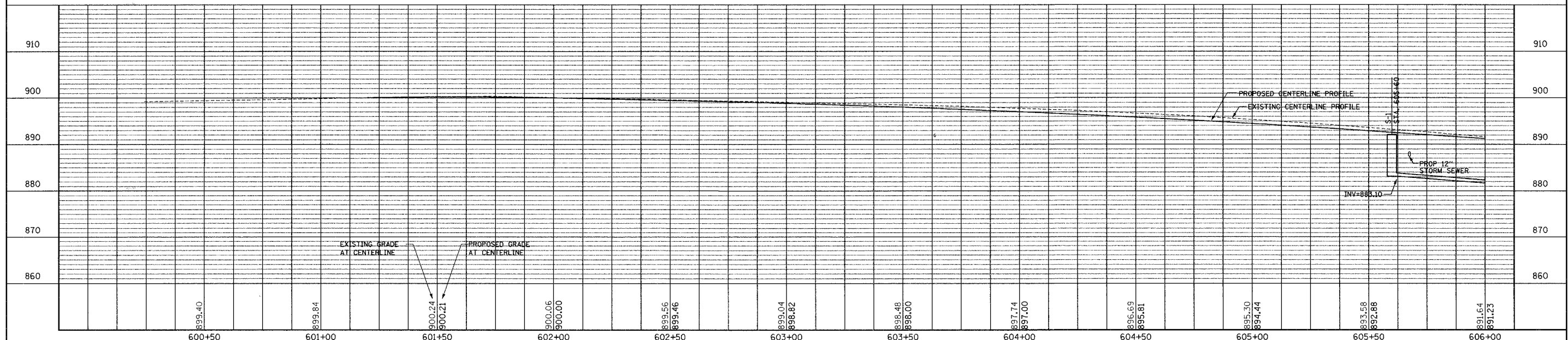
- NOTES:
- SANITARY AND WATER STRUCTURE LOCATIONS ARE INDICATED AT THEIR CENTER.
 - ALL PIPE LENGTHS ARE INDICATED TO INSIDE WALL OF STRUCTURE.
 - LOCATIONS OF EXISTING UTILITIES ARE APPROXIMATE, VERIFY IN FIELD.
 - TRENCH BACKFILL FOR WATER SERVICES IS TO BE INCLUDED IN THE PRICE OF THE WATER SERVICE LINE. THE CONTRACTOR SHALL HAVE THE OPTION TO INSTALL WATER SERVICES VIA DIRECTIONAL BORING.



WATER SERVICE SCHEDULE

ADDRESS	STATION	SIZE & TYPE	LENGTH	NOTES
1499 SPRINGHILL	602+60	1" COPPER	64 FT	INSTALL NEW CORP STOP, CURB STOP AND B-BOX
12070 HANSON	603+75	1" COPPER	59 FT	INSTALL NEW CORP STOP, CURB STOP AND B-BOX

HANSON ROAD
 SANITARY SEWER AND WATER MAIN PLANS
 (NON-PARTICIPATING ITEM)



PLAN AND PROFILE

HANSON ROAD STA. 600+00 TO STA. 606+00