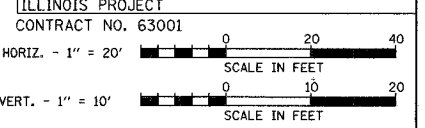


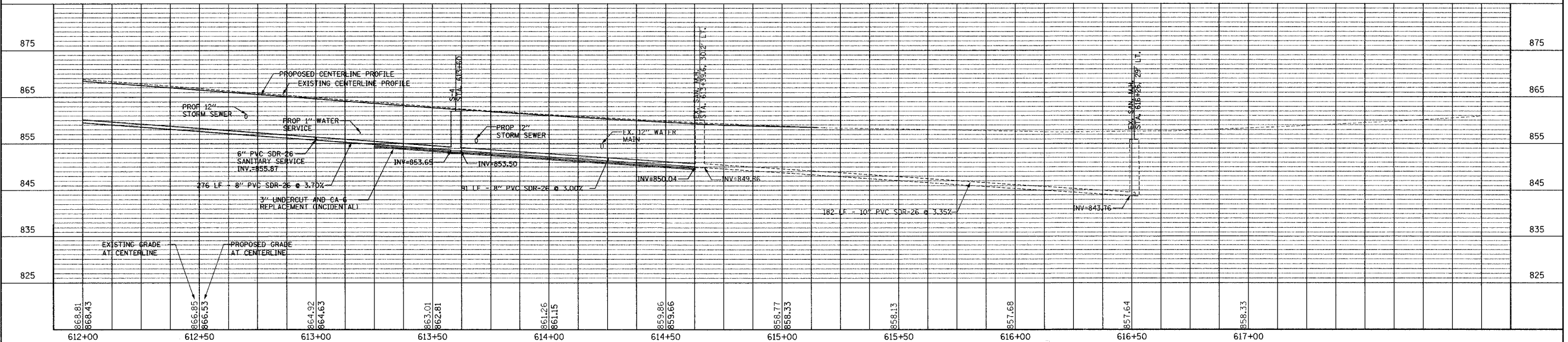
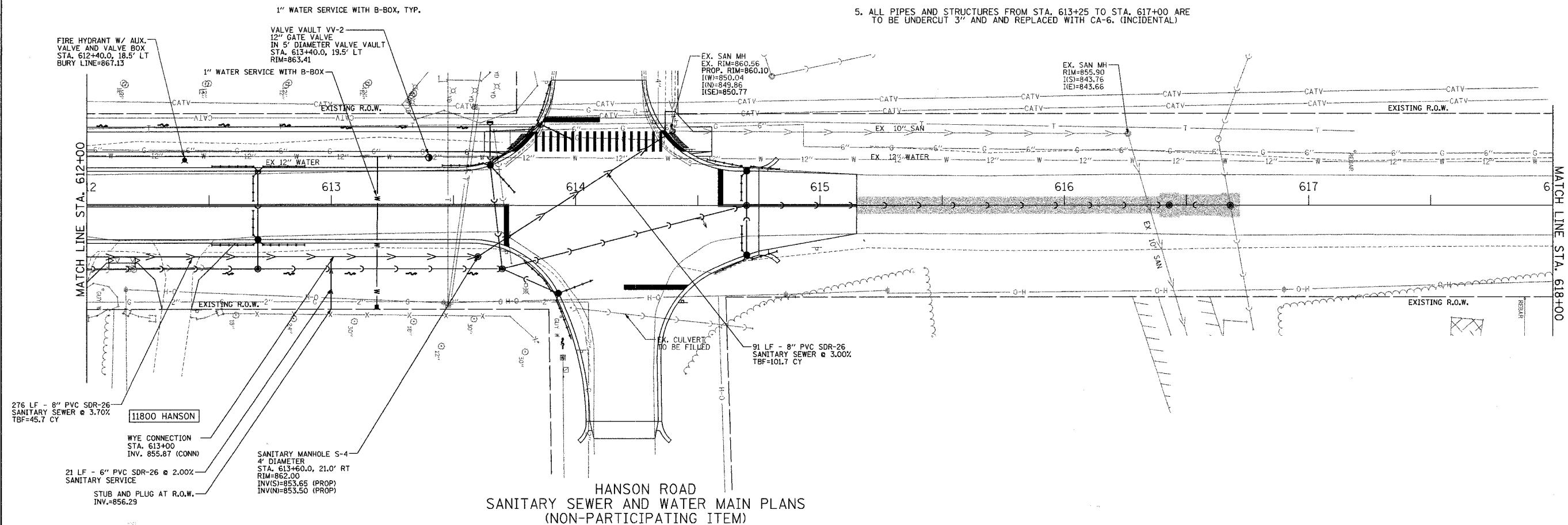
WATER SERVICE SCHEDULE

ADDRESS	STATION	SIZE & TYPE	LENGTH	NOTES
11800 HANSON	613+19	1" COPPER	61 FT	INSTALL NEW CORP STOP, CURB STOP AND B-BOX

F.A.U. ROUTE NO.	SECTION	COUNTY	TOTAL SHEETS	SHEET NO.
4011	06-00071-00-PV	McHENRY	31	16



- NOTES:
- SANITARY AND WATER STRUCTURE LOCATIONS ARE INDICATED AT THEIR CENTER.
 - ALL PIPE LENGTHS ARE INDICATED TO INSIDE WALL OF STRUCTURE.
 - LOCATIONS OF EXISTING UTILITY ARE APPROXIMATE, VERIFY IN FIELD.
 - TRENCH BACKFILL FOR WATER SERVICES IS TO BE INCLUDED IN THE PRICE OF THE WATER SERVICE LINE. THE CONTRACTOR SHALL HAVE THE OPTION TO INSTALL WATER SERVICES VIA DIRECTIONAL BORING.
 - ALL PIPES AND STRUCTURES FROM STA. 613+25 TO STA. 617+00 ARE TO BE UNDERCUT 3" AND AND REPLACED WITH CA-6. (INCIDENTAL)



PLAN AND PROFILE

HANSON ROAD STA. 612+00 TO STA. 618+00