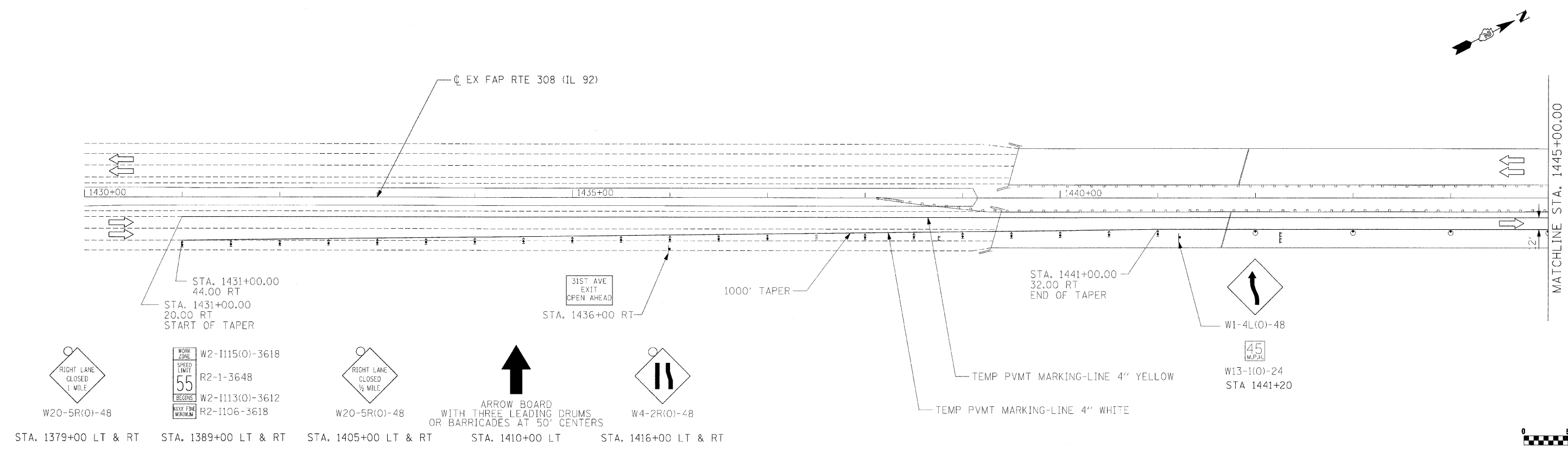
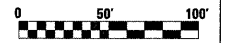


F.A.P. RTE.	SECTION	COUNTY	TOTAL SHEETS	SHEET NO.
308	11-HB,1B-1,VB,1B-2H	ROCK ISLAND	210	59A
STA. 1430+00.00		TO STA. 1460+00.00		
FED. ROAD DIST. NO. 2		ILLINOIS FED. AID PROJECT		

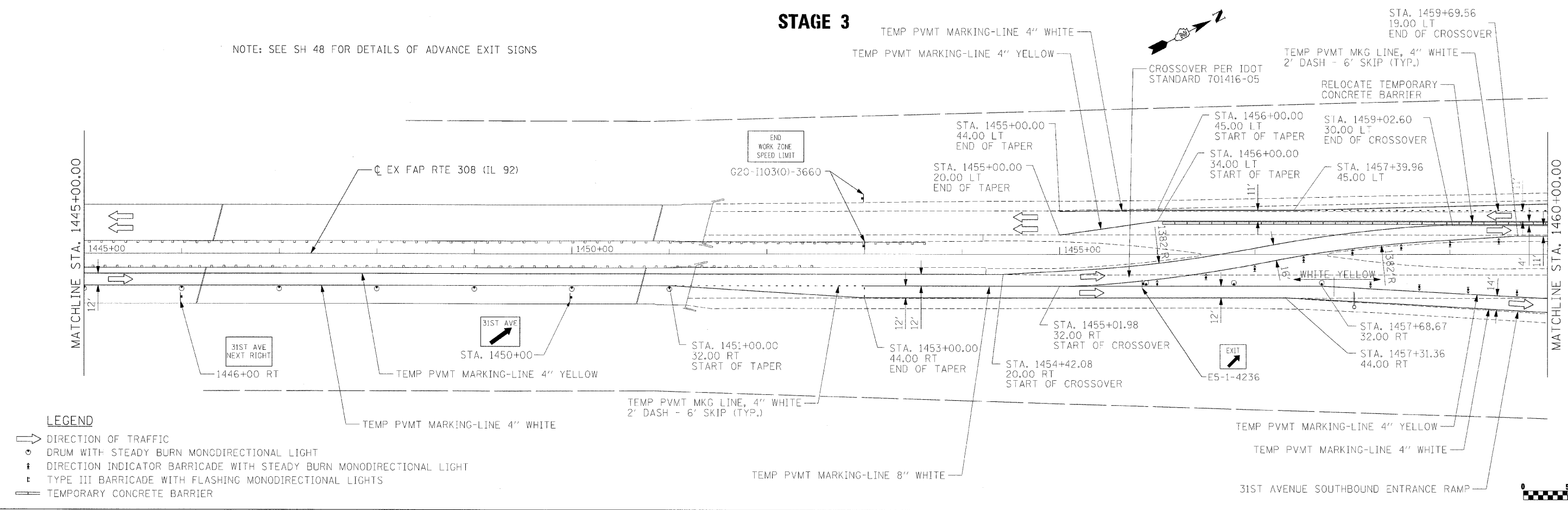
### STAGE 3



STA. 1379+00 LT & RT    STA. 1389+00 LT & RT    STA. 1405+00 LT & RT    STA. 1410+00 LT    STA. 1416+00 LT & RT



### STAGE 3



NOTE: SEE SH 48 FOR DETAILS OF ADVANCE EXIT SIGNS

#### LEGEND

- ➔ DIRECTION OF TRAFFIC
- DRUM WITH STEADY BURN MONODIRECTIONAL LIGHT
- ⚡ DIRECTION INDICATOR BARRICADE WITH STEADY BURN MONODIRECTIONAL LIGHT
- ⚡ TYPE III BARRICADE WITH FLASHING MONODIRECTIONAL LIGHTS
- ▬ TEMPORARY CONCRETE BARRIER

PLOT DATE = 8/24/05  
 FILE NAME = 05FILE3  
 PLOT SCALE = 1/8"=1'-0"  
 USER NAME = JWB

