

NOTES:

1. Space reinforcement in cap to miss anchor bolts.
2. Pour steps monolithically with cap.
3. For details of piles, see Sheet No. 22
4. For pier enhancement details see Sheet No. 24
5. Concrete Sealer shall be applied to all exposed surfaces of piers.

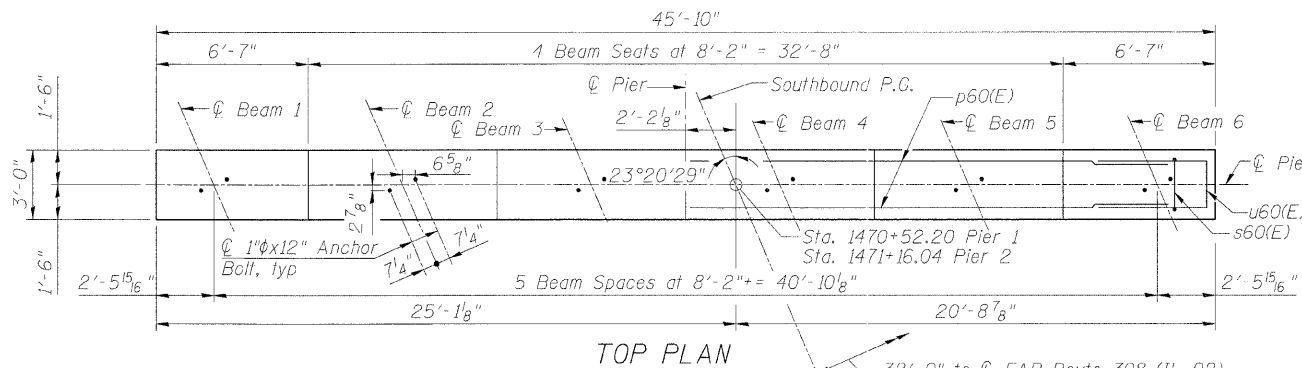
PILE DATA

Type: HP14X89 with Pile Shoes
 Nominal Required Bearing: 705K
 Allowable Resistance Available: 235K
 Est. Length: 63 ft (Pier 1) and 65 ft (Pier 2)
 No. Production Piles: 9 (Pier 1) and 9 (Pier 2)
 No. Test Piles: 0

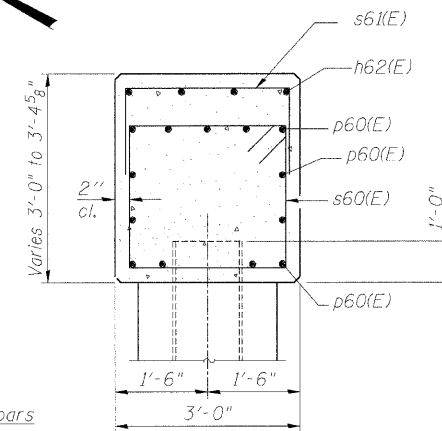
STATE OF ILLINOIS
 DEPARTMENT OF TRANSPORTATION

ROUTE NO.	SECTION	COUNTY	PROJECT	SHEET NO.	SHEET NO. 20
F.A.P. 308	*	ROCK ISLAND	210	104	31 SHEETS
FED. ROAD DIST. NO. 7	ILLINOIS	FED. AID PROJECT			

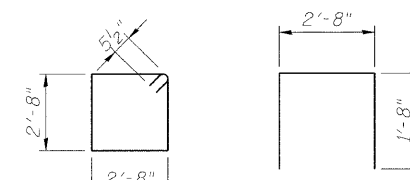
Contract #64814 * (KHB, HB-1, VB, HB-2)R



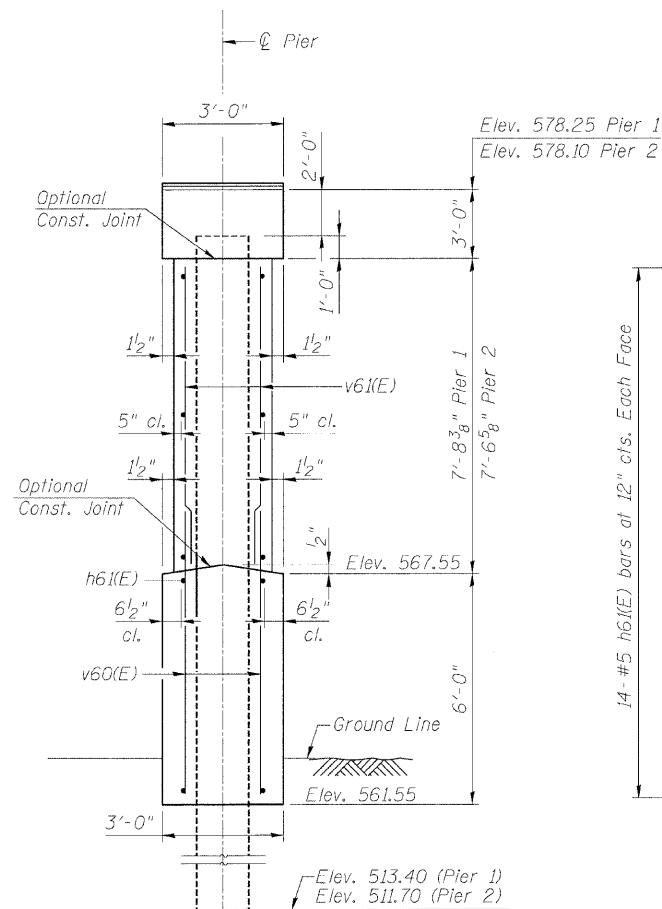
TOP PLAN



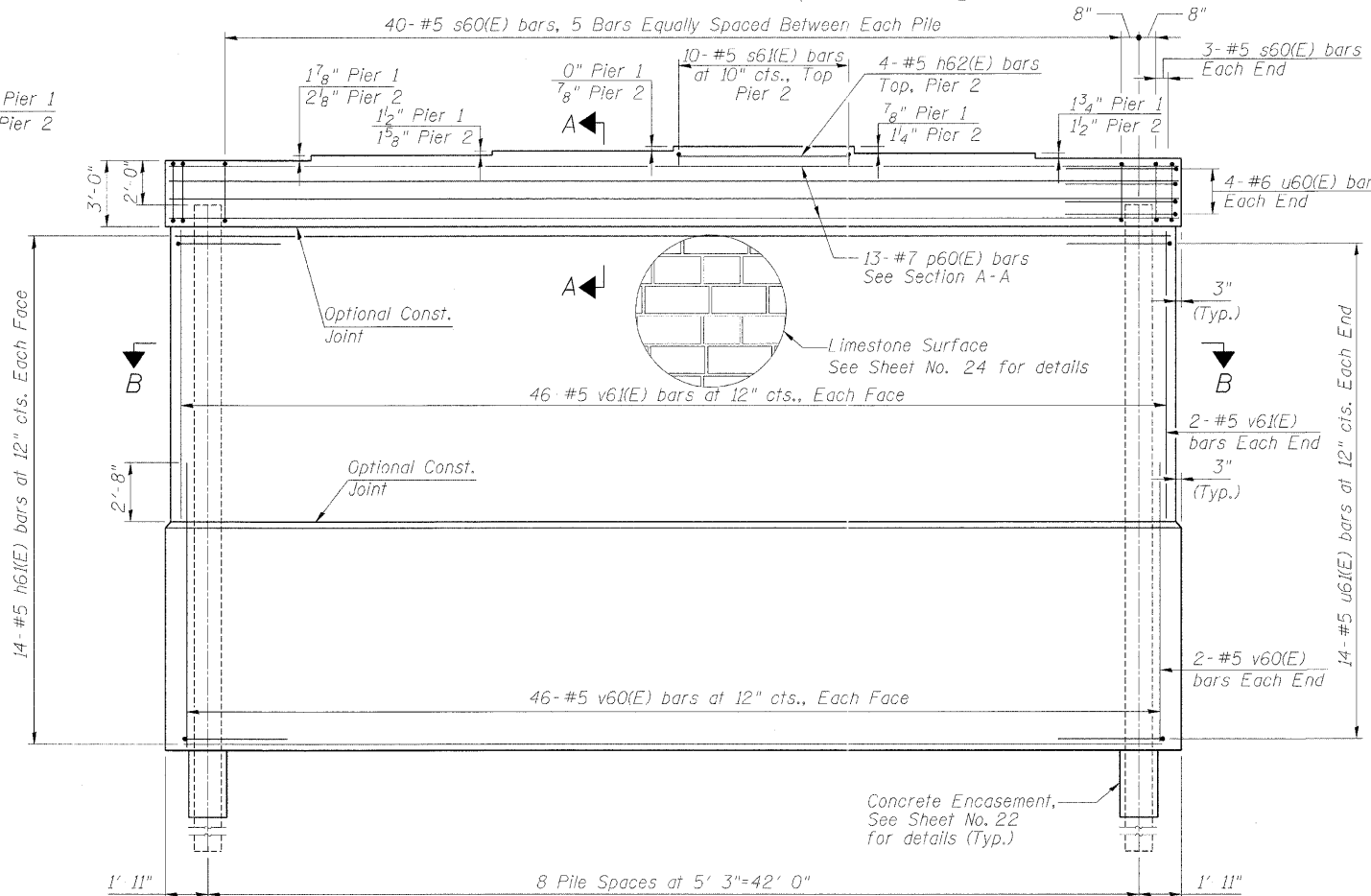
SECTION A-A



BAR s60(E)
BAR s61(E)
BARS u60(E) and u61(E)

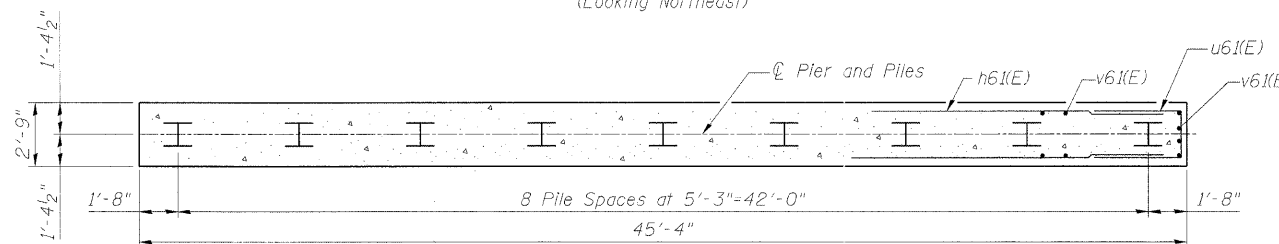


END VIEW



ELEVATION

(Looking Northeast)



SECTION B-B

BILL OF MATERIAL FOR PIER 1

Bar	No.	Size	Length	Shape
h61(E)	28	#5	44'-6"	—
h62(E)	4	#5	7'-10"	—
p60(E)	13	#7	45'-6"	—
s60(E)	46	#5	11'-7"	□
u60(E)	8	#6	7'-9"	—
u61(E)	28	#5	6'-7"	—
v60(E)	96	#5	8'-6"	—
v61(E)	96	#5	7'-3"	—
Structure Excavation			Cu. Yd.	20
Concrete Structures			Cu. Yd.	82.3
Rubbed Finish			Sq. Ft.	847
Form Liner Limestone Surface			Sq. Ft.	741
Reinforcement Bars, Epoxy Coated			Pound	4,930
Furnishing Steel Piles HP14x89			Foot	567
Driving Piles			Foot	567
Pile Shoes			Each	9
Concrete Encasement			Cu. Yd.	4.9
Concrete Sealer			Sq. Ft.	1,630

BILL OF MATERIAL FOR PIER 2

Bar	No.	Size	Length	Shape
h61(E)	28	#5	44'-6"	—
h62(E)	4	#5	7'-10"	—
p60(E)	13	#7	45'-6"	—
s60(E)	46	#5	11'-7"	□
s61(E)	10	#5	6'-0"	□
u60(E)	8	#6	7'-9"	—
u61(E)	28	#5	6'-7"	—
v60(E)	96	#5	8'-6"	—
v61(E)	96	#5	7'-3"	—
Structure Excavation			Cu. Yd.	20
Concrete Structures			Cu. Yd.	81.9
Rubbed Finish			Sq. Ft.	852
Form Liner Limestone Surface			Sq. Ft.	726
Reinforcement Bars, Epoxy Coated			Pound	5,020
Furnishing Steel Piles HP14x89			Foot	585
Driving Piles			Foot	585
Pile Shoes			Each	9
Concrete Encasement			Cu. Yd.	4.9
Concrete Sealer			Sq. Ft.	1,622

A & B DIMENSIONS

Bar	A	B
u60(E)	2'-7"	2'-7"
u61(E)	1'-11"	2'-4"

BEARING SEAT ELEVATIONS

BEAM	PIER 1	PIER 2
1	578.25	578.10
2	578.41	578.28
3	578.53	578.42
4	578.53	578.49
5	578.46	578.39
6	578.31	578.26

PIERS 1 AND 2 (SB)
 IL ROUTE 92 (CENTENNIAL EXPRESSWAY)
 OVER 31ST AVENUE
 FAP ROUTE 308 SEC. (KHB-2)R
 ROCK ISLAND COUNTY
 STATION 1470+70.31
 STRUCTURE NO. 081-0172 (SB)

DESIGNED	JDG
CHECKED	WPK
DRAWN	DCS
CHECKED	JDG



DB STERLIN CONSULTANTS, INC.
 208 S. LASALLE ST. SUITE 1130
 CHICAGO, ILLINOIS 60604
 TEL. 312/857-1006 FAX. 312/857-1056

SIZES