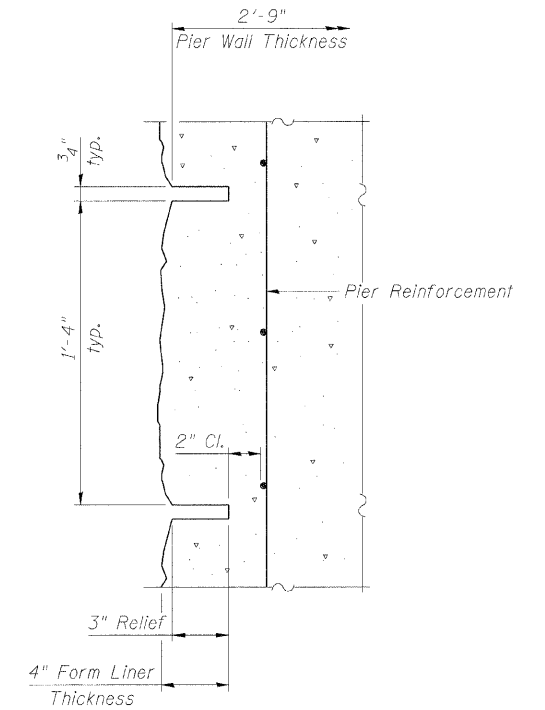
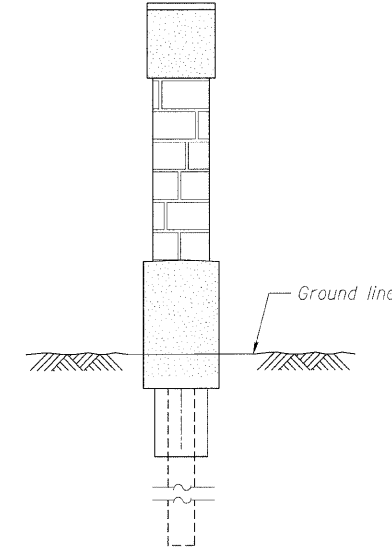
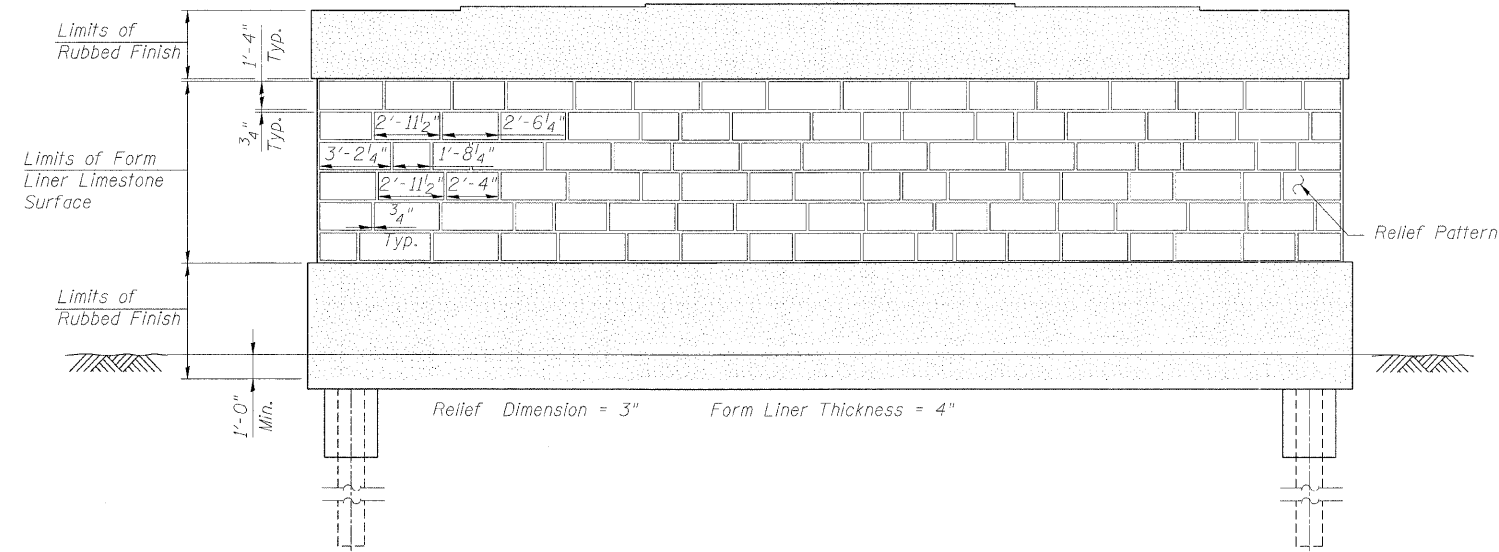


STATE OF ILLINOIS
DEPARTMENT OF TRANSPORTATION

ROUTE NO.	SECTION	COUNTY	TOTAL SHEETS	SHEET NO.	SHEET NO. 24
F.A.P. 308	*	ROCK ISLAND	210	108	31 SHEETS
FED. ROAD DIST. NO. 7	ILLINOIS	FED. AID PROJECT-			

Contract #64814 * 1(HB,HB-1,VB,HB-2)R



NOTES

1. Relief pattern shown is for reference only. Final relief pattern to be developed by the Contractor and submitted to the Engineer for approval.
2. For additional information on Form Liner Limestone Surface, see Special Provision.
3. Rubbed Finish shall be in accordance with Article 503.06 of the Standard Specifications and will be paid for per square foot of finished surface.
4. For pier dimensions, reinforcement details and quantities, see Sheet Nos. 20 and 21.

PIER ENHANCEMENTS
IL ROUTE 92 (CENTENNIAL EXPRESSWAY)
OVER 31st. AVENUE
FAP ROUTE 308 SEC. 1(HB-2)R
ROCK ISLAND COUNTY
STATION 1470+70.31
STRUCTURE NO. 081-0172 (SB)
STRUCTURE NO. 081-0173 (NB)

DESIGNED	BJN
CHECKED	AMK
DRAWN	BJN
CHECKED	RWC

LOCHNER
H.W. LOCHNER, INC., CHICAGO, ILLINOIS

t:\2082\structure\dgn\2044023MD2.dgn