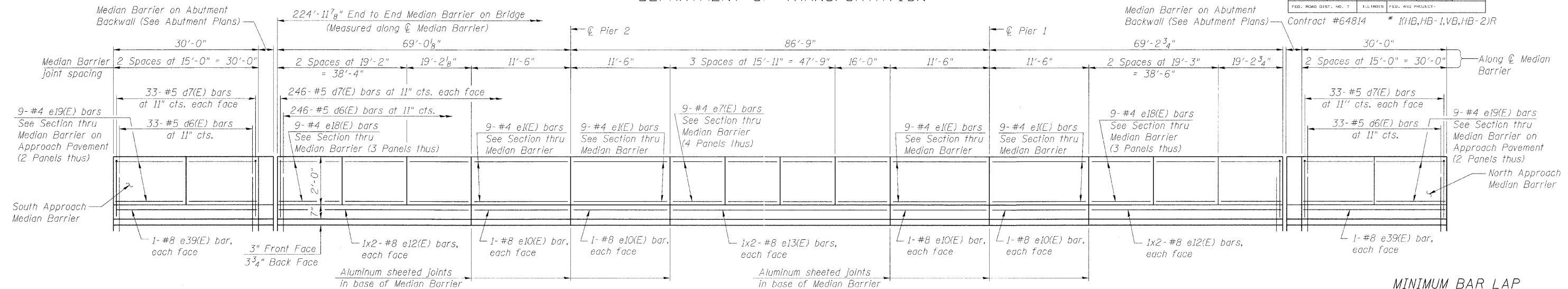


STATE OF ILLINOIS
DEPARTMENT OF TRANSPORTATION

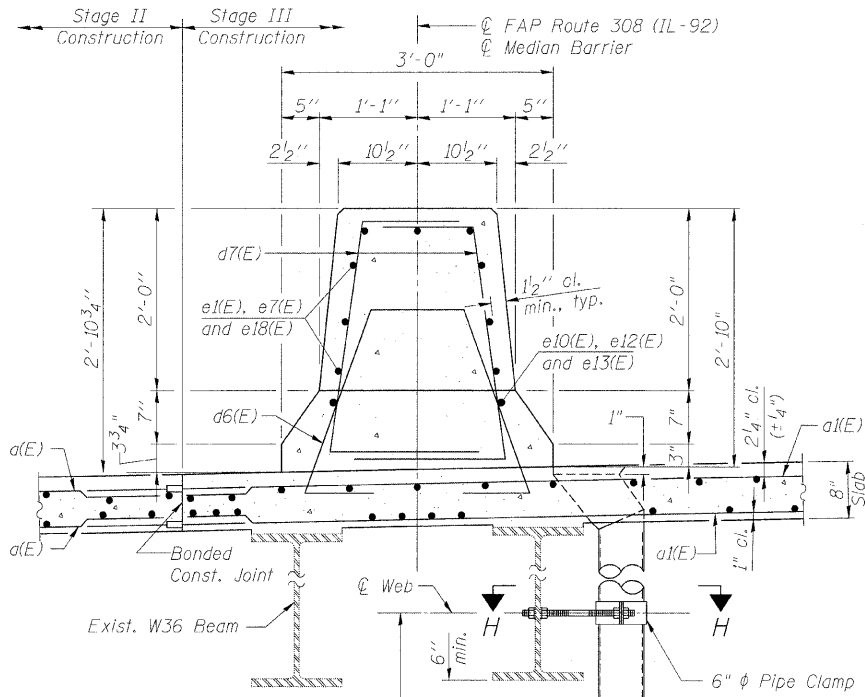
ROUTE NO.	SECTION	COUNTY	SHEET NO.	SHEET NO.
F.A.P. 308	#	ROCK ISLAND	210	128
FED. ROAD DIST. NO. 7		ILLINOIS	FED. AID PROJECT	

Contract #64814 * (1VB,HB-1,VB,HB-2)R

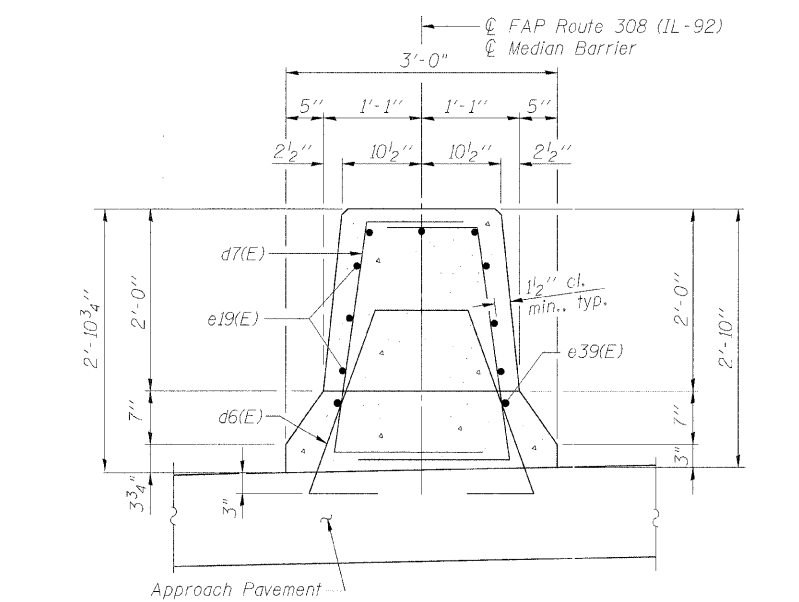


MEDIAN BARRIER ELEVATION
(Looking West)

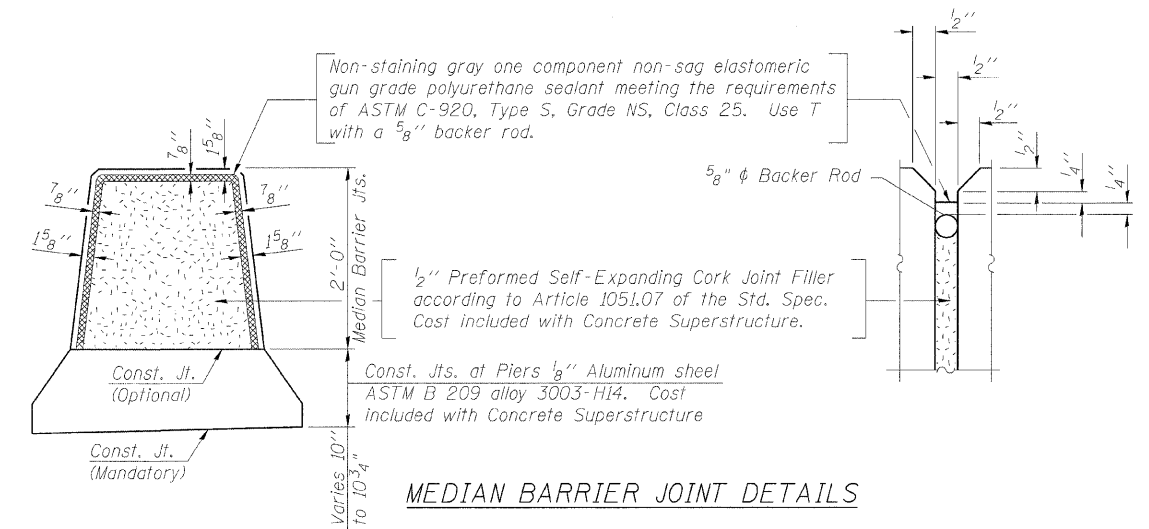
MINIMUM BAR LAP
(Median Barrier)
#4 bar = 1'-4"
#8 bar = 3'-5"



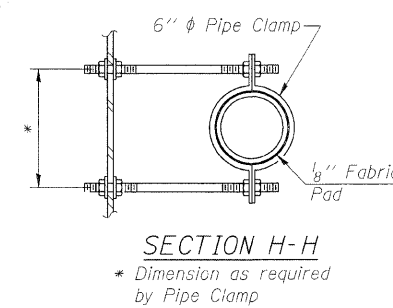
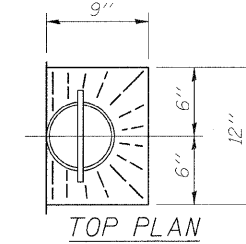
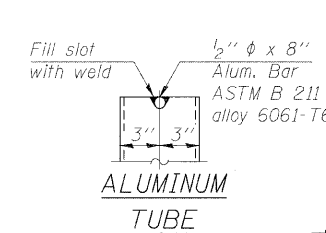
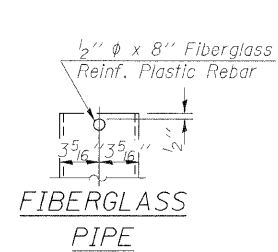
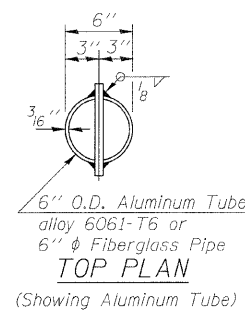
SECTION THRU MEDIAN BARRIER ON BRIDGE
(Looking North)



SECTION THRU MEDIAN BARRIER ON APPROACH PAVEMENT
(Looking North)
(See Note 5)



MEDIAN BARRIER JOINT DETAILS



SECTION H-H
* Dimension as required by Pipe Clamp

NOTES

1. Bars indicated thus 1x2-#5 etc. indicates 1 line of bars with 2 lengths per line.
2. For Bar List and Bill of Material, see Sheet No. 14
3. All edges shall have a 3/4" chamfer except as noted.
4. Cost of median concrete on approach pavement included with Concrete Superstructure.
5. For Approach Pavement reinforcement and details see IDOT Standard Drawings.

MEDIAN BARRIER DETAILS
IL ROUTE 92 (CENTENNIAL EXPRESSWAY)
OVER IAIS RAILROAD
FAP ROUTE 308 SEC. 1(VB)R
ROCK ISLAND COUNTY
STATION 1507+04.10
STRUCTURE NO. 081-0064

DESIGNED	AMK
CHECKED	CMM
DRAWN	AMK
CHECKED	RWC

LOCHNER
H.W. LOCHNER, INC., CHICAGO, ILLINOIS

Notes:

The exterior surfaces of the floor drains shall be painted with the finish coat as specified in the special provisions for Cleaning and Painting New Metal Structures. The exterior surfaces of the drains shall be cleaned according to Steel Structures Painting Council's Spec. SSPC-SP1 prior to painting. Fiberglass pipe shall conform to ASTM D 2996, with short-time rupture strength hoop tensile stress of 30,000 p.s.i. minimum.

t:\2082\st-uct\sgn\2044029PD1.dgn