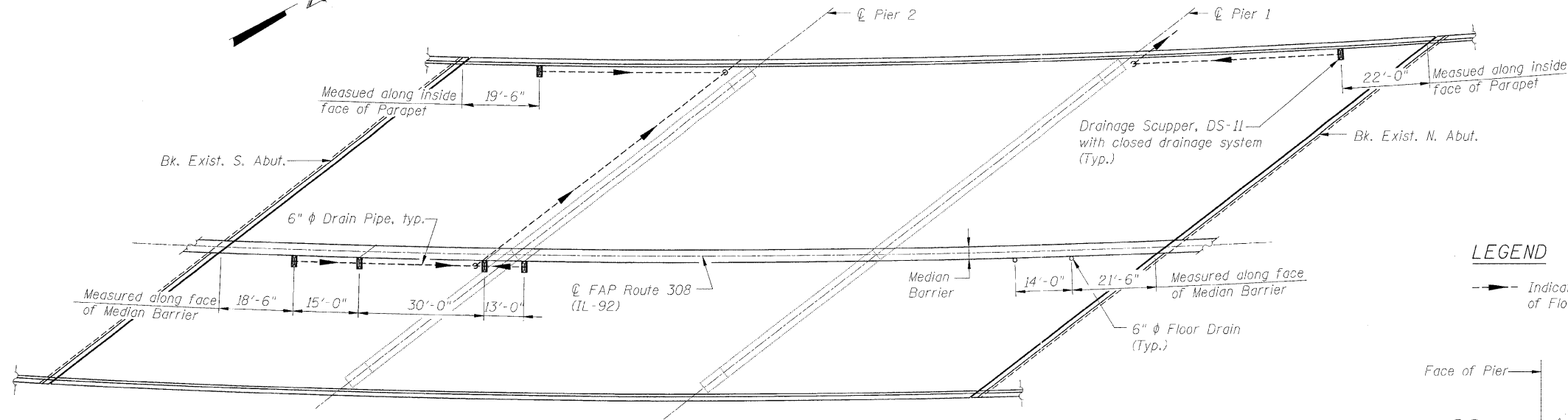


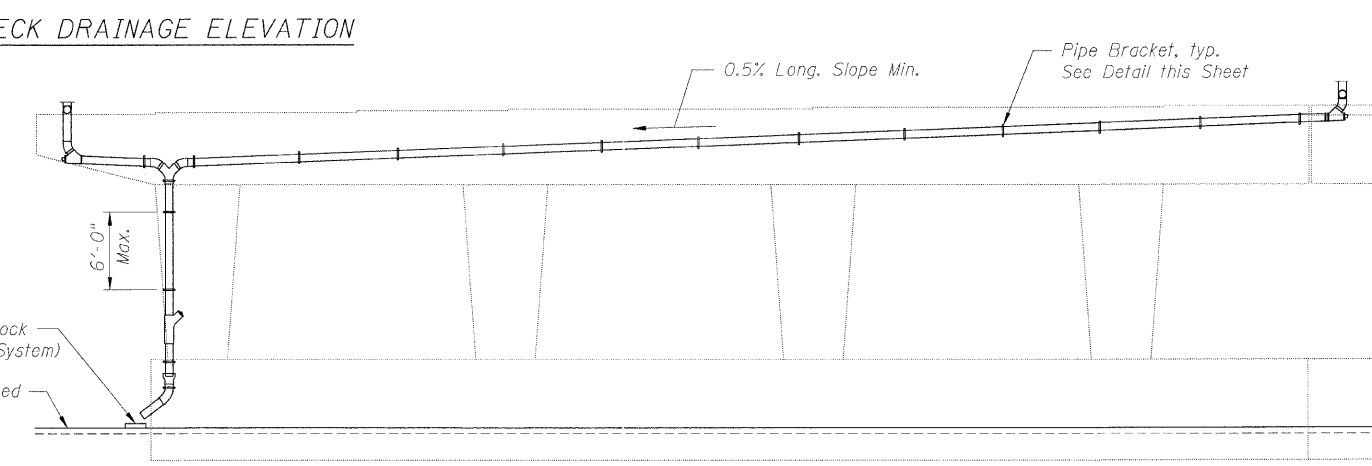
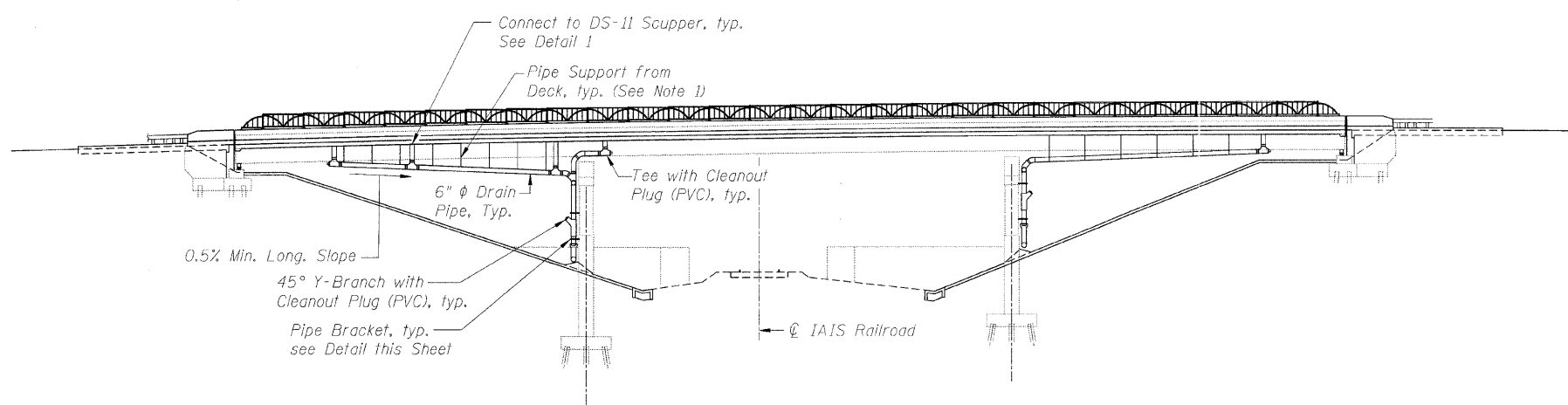
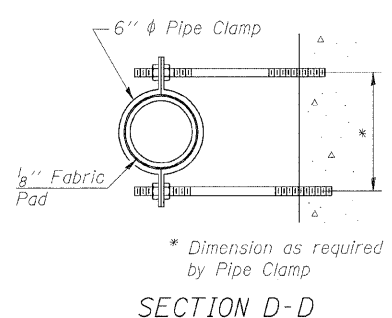
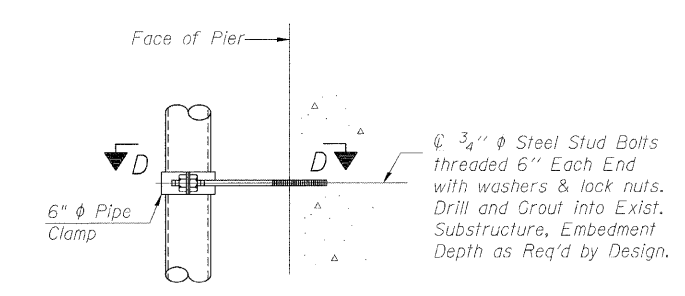
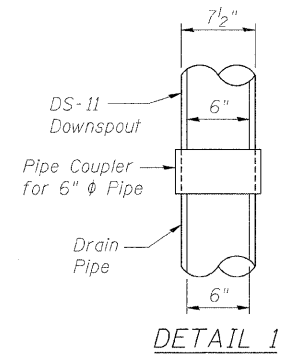
STATE OF ILLINOIS  
DEPARTMENT OF TRANSPORTATION

ROUTE NO.	DISTRICT	COUNTY	TOTAL SHEETS	SHEET NO.
F.A.P. 308	*	ROCK ISLAND	210	133
SHEET NO. 18 32 SHEETS				
FED. ROAD DIST. NO. 7	ILLINOIS	FED. AID PROJECT-		
Contract #64814 * (HB, HB-1, VB, HB-2)R				



LEGEND

--- Indicates Direction of Flow



BILL OF MATERIAL

Item	Unit	Total
Drainage System	L. Sum	0.4
Floor Drains	Each	2

NOTES

1. Provide structural support from proposed deck slab for drain pipe per manufacturer's recommendation, not to exceed 6' cts. Cost included with "Drainage System."
2. No part of the Drainage System shall extend below the bottom flange of Beam 5 at any point in the center span.
3. For scupper details see Sheet No. 17
4. For floor drain details, see Sheet No. 13

CLOSED DRAINAGE SYSTEM  
IL ROUTE 92 (CENTENNIAL EXPRESSWAY)  
OVER I A I S RAILROAD  
FAP ROUTE 308 SEC. 1(VB)R  
ROCK ISLAND COUNTY  
STATION 1507+04.10  
STRUCTURE NO. 081-0064

DESIGNED	AMK
CHECKED	CMM
DRAWN	AMK
CHECKED	RWC

**LOCHNER**  
H.W. LOCHNER, INC., CHICAGO, ILLINOIS

t:\2082\structure\dgn\2044029SP2.dgn