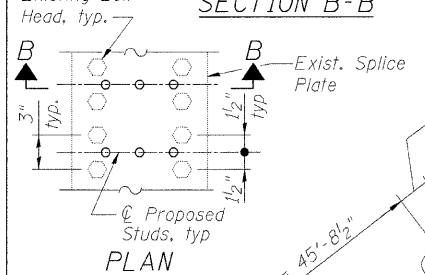
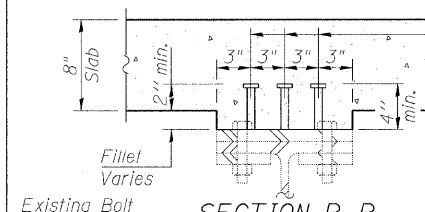
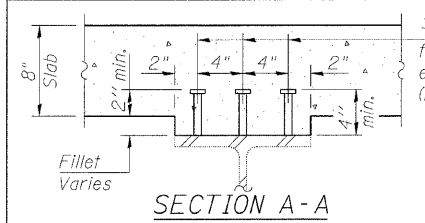


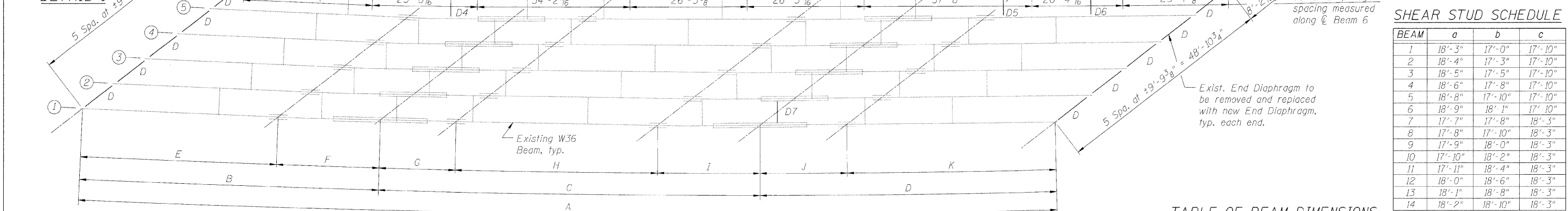
STATE OF ILLINOIS
DEPARTMENT OF TRANSPORTATION

ROUTE NO.	SECTION	COUNTY	SHEET	SHEET NO.
F.A.P. 308	*	ROCK ISLAND	210	134
FED. ROAD DIST. NO. 7	ILLINOIS	FED. AID PROJECT		32 SHEETS

Contract #64814 * (HB, HB-1, VB, HB-2)JR



DETAIL 1



SHEAR STUD SCHEDULE

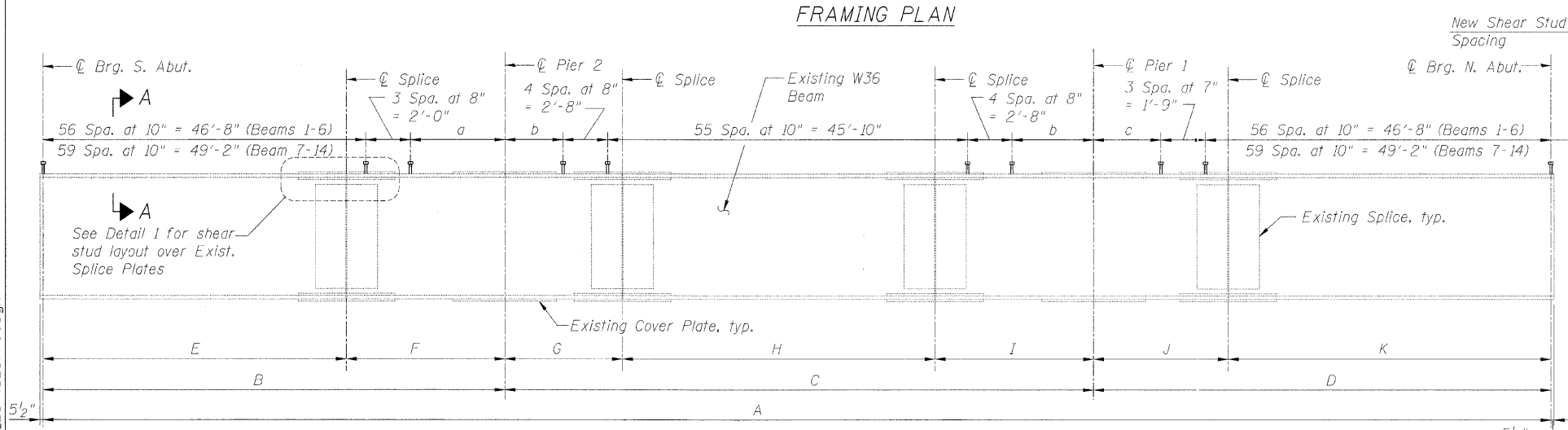
BEAM	a	b	c
1	18'-3"	17'-0"	17'-10"
2	18'-4"	17'-3"	17'-10"
3	18'-5"	17'-5"	17'-10"
4	18'-6"	17'-8"	17'-10"
5	18'-8"	17'-10"	17'-10"
6	18'-9"	18'-1"	17'-10"
7	17'-7"	17'-8"	18'-3"
8	17'-8"	17'-10"	18'-3"
9	17'-9"	18'-0"	18'-3"
10	17'-10"	18'-2"	18'-3"
11	17'-11"	18'-4"	18'-3"
12	18'-0"	18'-6"	18'-3"
13	18'-1"	18'-8"	18'-3"
14	18'-2"	18'-10"	18'-3"

TABLE OF BEAM DIMENSIONS

BEAM	A	B	C	D	E	F	G	H	I	J	K
1	218'-4 1/16"	66'-10 3/16"	85'-2 1/16"	66'-2 1/16"	43'-11 3/16"	22'-11 5/16"	17'-0"	45'-3 1/2"	22'-11 1/16"	19'-6"	46'-8 1/16"
2	218'-10 1/16"	67'-0"	85'-7 3/4"	66'-2 1/16"	43'-11 3/16"	23'-0 3/16"	17'-0"	45'-8 5/16"	22'-11 1/16"	19'-6"	46'-8 1/16"
3	219'-4 1/2"	67'-1 1/4"	86'-0 9/16"	66'-2 1/16"	43'-11 3/16"	23'-2 1/16"	17'-0"	46'-1 1/8"	22'-11 1/16"	19'-6"	46'-8 1/16"
4	219'-10 1/2"	67'-2 1/8"	86'-5 1/16"	66'-2 1/16"	43'-11 3/16"	23'-3 1/16"	17'-0"	46'-6"	22'-11 1/16"	19'-6"	46'-8 1/16"
5	220'-4 9/16"	67'-3 5/8"	86'-10 1/4"	66'-2 1/16"	43'-11 3/16"	23'-4 1/16"	17'-0"	46'-10 3/16"	22'-11 1/16"	19'-6"	46'-8 1/16"
6	220'-10 3/8"	67'-4 1/2"	87'-3 3/8"	66'-2 1/16"	43'-11 3/16"	23'-5 5/8"	17'-0"	47'-3 1/16"	22'-11 1/16"	19'-6"	46'-8 1/16"
7	224'-4 1/16"	68'-8 5/8"	86'-5 3/4"	69'-2 5/16"	45'-7 7/16"	23'-1 1/16"	17'-0"	45'-9 3/16"	23'-8 3/16"	19'-6"	49'-8 5/16"
8	224'-9 5/8"	68'-9 9/16"	86'-9 3/4"	69'-2 5/16"	45'-7 7/16"	23'-2"	17'-0"	46'-1 1/16"	23'-8 9/16"	19'-6"	49'-8 5/16"
9	225'-2 5/8"	68'-10 3/16"	87'-1 3/4"	69'-2 5/16"	45'-7 7/16"	23'-3"	17'-0"	46'-5 1/16"	23'-8 3/16"	19'-6"	49'-8 5/16"
10	225'-7 1/16"	68'-11 9/16"	87'-5 1/16"	69'-2 5/16"	45'-7 7/16"	23'-4"	17'-0"	46'-9 1/4"	23'-8 3/16"	19'-6"	49'-8 5/16"
11	226'-0 1/16"	69'-0 9/16"	87'-9 3/16"	69'-2 5/16"	45'-7 7/16"	23'-5"	17'-0"	47'-1 1/4"	23'-8 3/16"	19'-6"	49'-8 5/16"
12	226'-5 3/4"	69'-1 9/16"	88'-1 1/8"	69'-2 5/16"	45'-7 7/16"	23'-6"	17'-0"	47'-5 5/8"	23'-8 3/16"	19'-6"	49'-8 5/16"
13	226'-10 3/16"	69'-2 3/16"	88'-5 5/16"	69'-2 5/16"	45'-7 7/16"	23'-7"	17'-0"	47'-9 3/8"	23'-8 3/16"	19'-6"	49'-8 5/16"
14	227'-3 7/8"	69'-3 1/16"	88'-10"	69'-2 5/16"	45'-7 7/16"	23'-8"	17'-0"	48'-1 1/16"	23'-8 3/16"	19'-6"	49'-8 5/16"

NOTES

- All new steel on this sheet shall conform to the requirements of AASHTO M270 Grade 36.
- Contractor shall remove existing rivets where necessary to replace existing diaphragms and connection angles. Cost included with Furnishing and Erecting Structural Steel.
- Contractor shall determine locations of existing rivets and/or bolts and field verify dimensions and angles prior to ordering Structural Steel.
- For diaphragm details see Sheet No. 20
- Stud shear connectors shall not be placed within 3" of the field splice centerline.
- Stud shear connector spacing over existing splice locations shall be adjusted as required to avoid existing bolts.



BEAM ELEVATION

DESIGNED	AMK
CHECKED	JSD
DRAWN	AMK
CHECKED	RWC

LOCHNER
H.W. LOCHNER, INC., CHICAGO, ILLINOIS

FRAMING PLAN
IL ROUTE 92 (CENTENNIAL EXPRESSWAY)
OVER IAIS RAILROAD
FAP ROUTE 308 SEC. 1(VB)R
ROCK ISLAND COUNTY
STATION 1507+04.10
STRUCTURE NO. 081-0064