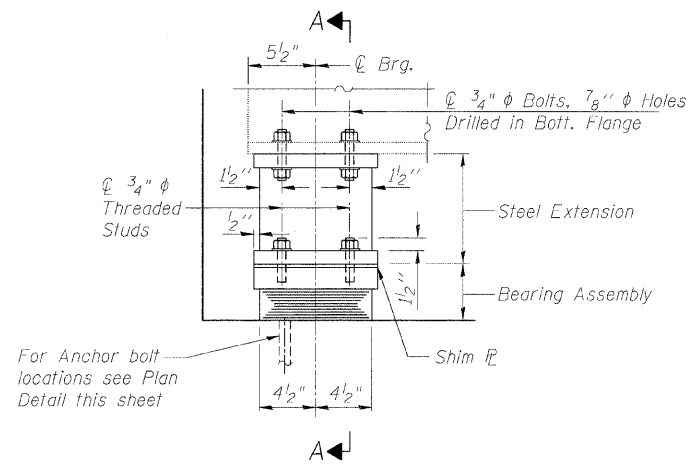
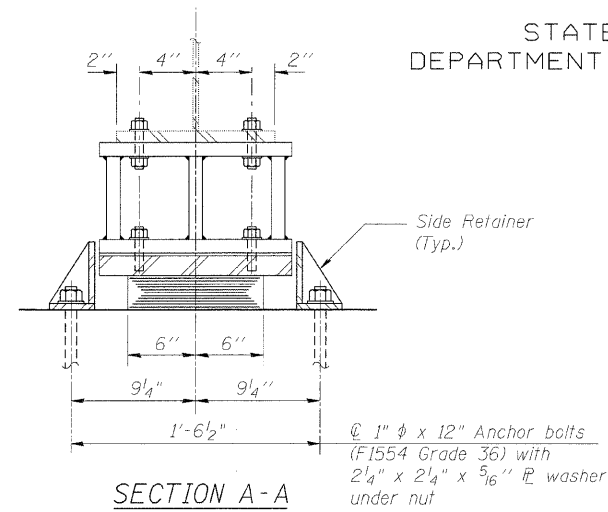


STATE OF ILLINOIS
DEPARTMENT OF TRANSPORTATION

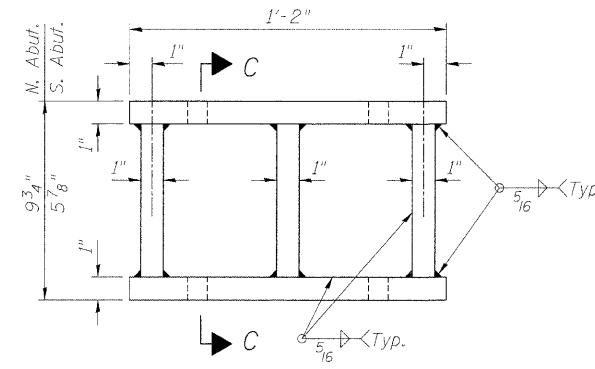
ROUTE NO.	SECTION	COUNTY	SHEET	SHEET NO.
F.A.P. 308	*	ROCK ISLAND	210	136
SHEET NO. 21 32 SHEETS				
FED. ROAD DIST. NO. 7	ILLINOIS	FED. AID PROJECT-		
Contract #64814 * (HB, HB-1, VB, HB-2)R				



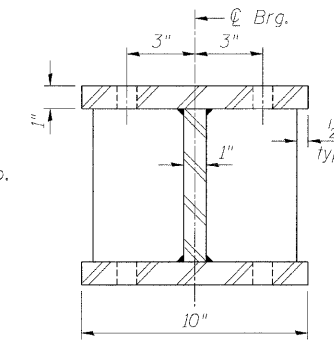
ELEVATION AT ABUT.



SECTION A-A

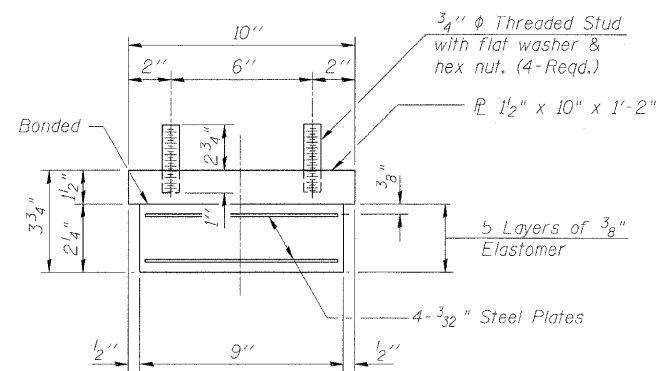


ELEVATION



SECTION C-C

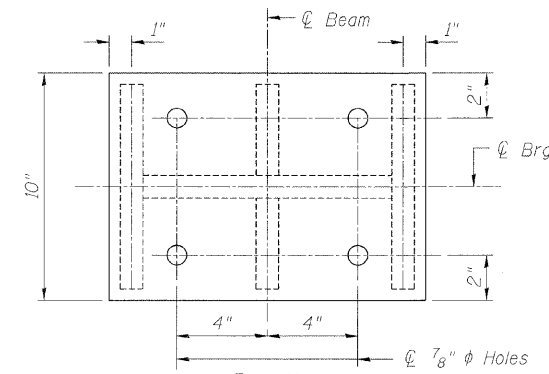
TYPE I ELASTOMERIC EXP. BRG.
NORTH ABUTMENT



BEARING ASSEMBLY

Note:
Shim plates shall not be placed under Bearing Assembly.

Notes:
Anchor bolts shall be ASTM F1554 all-thread (or an Engineer-approved alternate material) of the grade(s) and diameter(s) specified. ASTM A307 Grade C anchor bolts may be used in lieu of ASTM F1554 Grade 36 (Fy=36ksi). The corresponding specified grade of AASHTO M314 anchor bolts may be used in lieu of ASTM F1554.
Anchor bolts for side retainers may be installed in holes drilled before or after members are in place.
Drilled and set anchor bolts shall be installed according to Article 521.06 of the Standard Specifications.
Side retainers and other steel members required for the bearing assembly shall be included in the cost of Elastomeric Bearing Assembly, Type I.
The Contractor shall submit for approval to the Engineer plans for jacking prior to commencing any work at the bearings. Dead load (Beam self-weight) of 4.8 kips at each beam at abutments. Minimum jack capacity at each beam shall be 5 tons.
Two 1/8 inch adjusting shims shall be provided for each bearing in addition to all other plates or shims and placed as shown on bearing details.

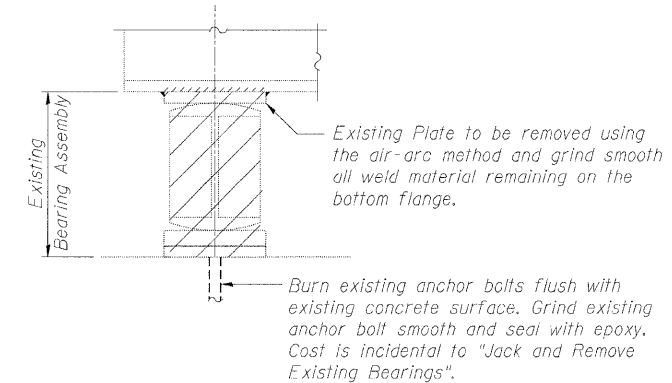


PLAN

STEEL EXTENSION

28 Required
Weight included with Structural Steel

Note:
Prior to ordering any material, the Contractor shall verify in the field all bearing height and shim thickness dimensions.



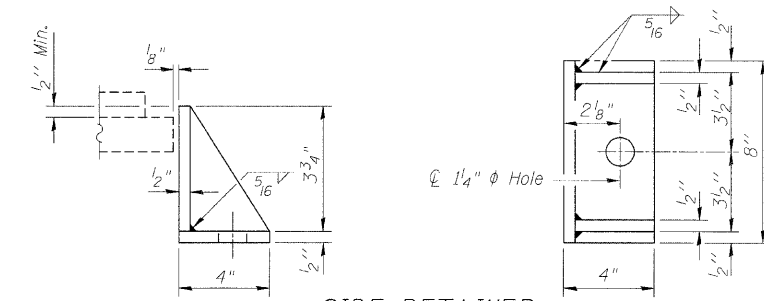
EXISTING BEARING ASSEMBLY REMOVAL

(North and South Abutment Only)

INTERIOR BEAM REACTION TABLE		
	N. Abut.	S. Abut.
R _R	(k)	29.8
R _L	(k)	36.0
Imp.	(k)	9.3
R _{Total}	(k)	75.1

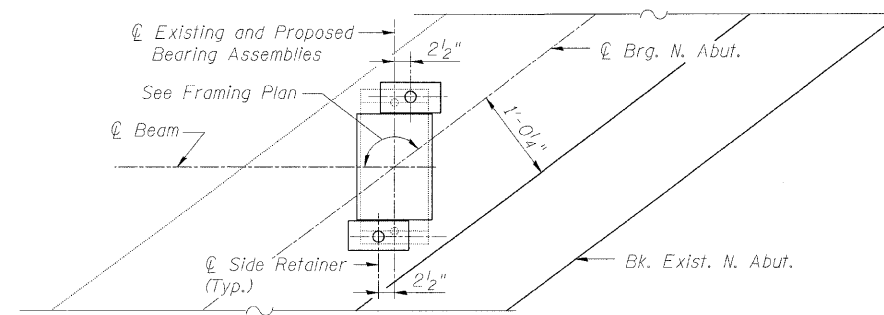
BILL OF MATERIAL

Item	Unit	Total
Elastomeric Bearing Assembly, Type I	Each	14
Anchor Bolts, 1"	Each	28
Jack and Remove Existing Bearings	Each	28



SIDE RETAINER

Equivalent rolled angle with stiffeners will be allowed in lieu of welded plates.



PLAN AT NORTH ABUTMENT

BEARING DETAILS 1
IL ROUTE 92 (CENTENNIAL EXPRESSWAY)
OVER IAIS RAILROAD
FAP ROUTE 308 SEC. 1(VB)R
ROCK ISLAND COUNTY
STATION 1507+04.10
STRUCTURE NO. 081-0064

DESIGNED	AMK
CHECKED	CMM
DRAWN	EF
CHECKED	RWC

LOCHNER
H.W. LOCHNER, INC., CHICAGO, ILLINOIS

t:\2082\struc\tdgn\2044029BD1.dgn