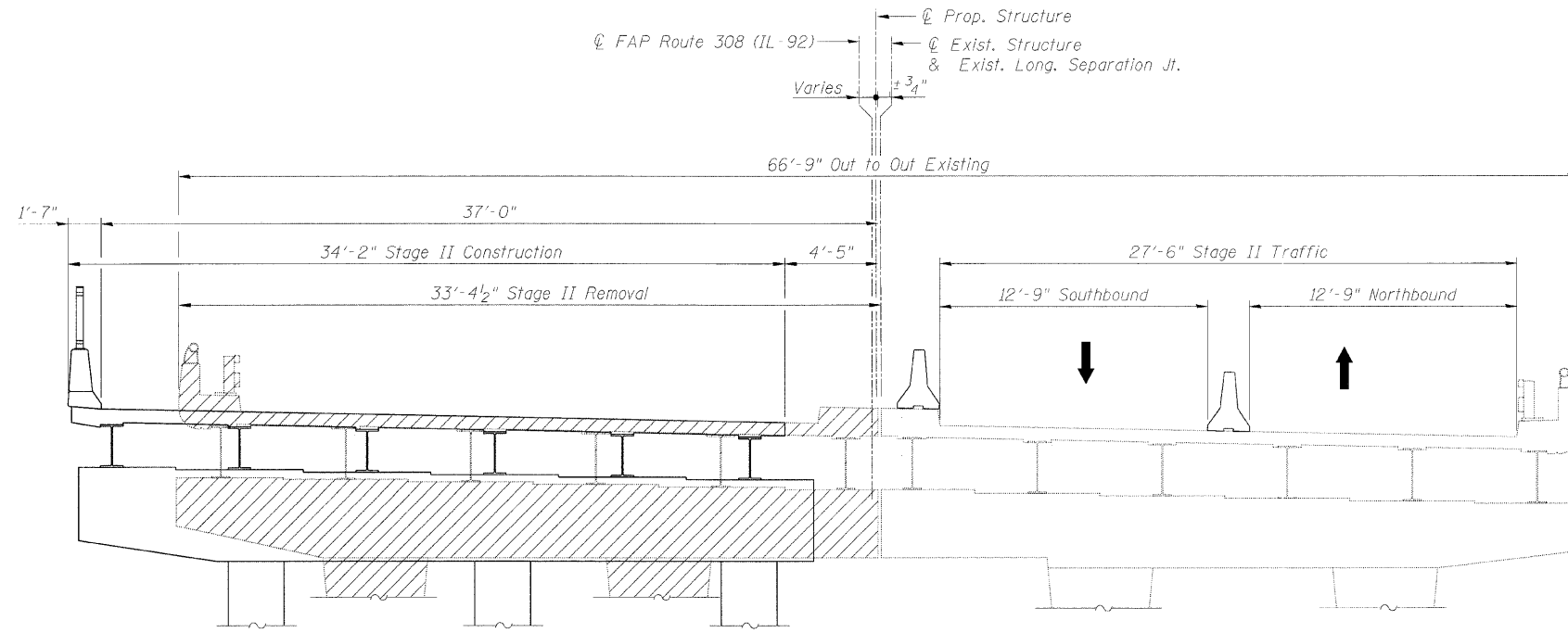


STATE OF ILLINOIS
DEPARTMENT OF TRANSPORTATION

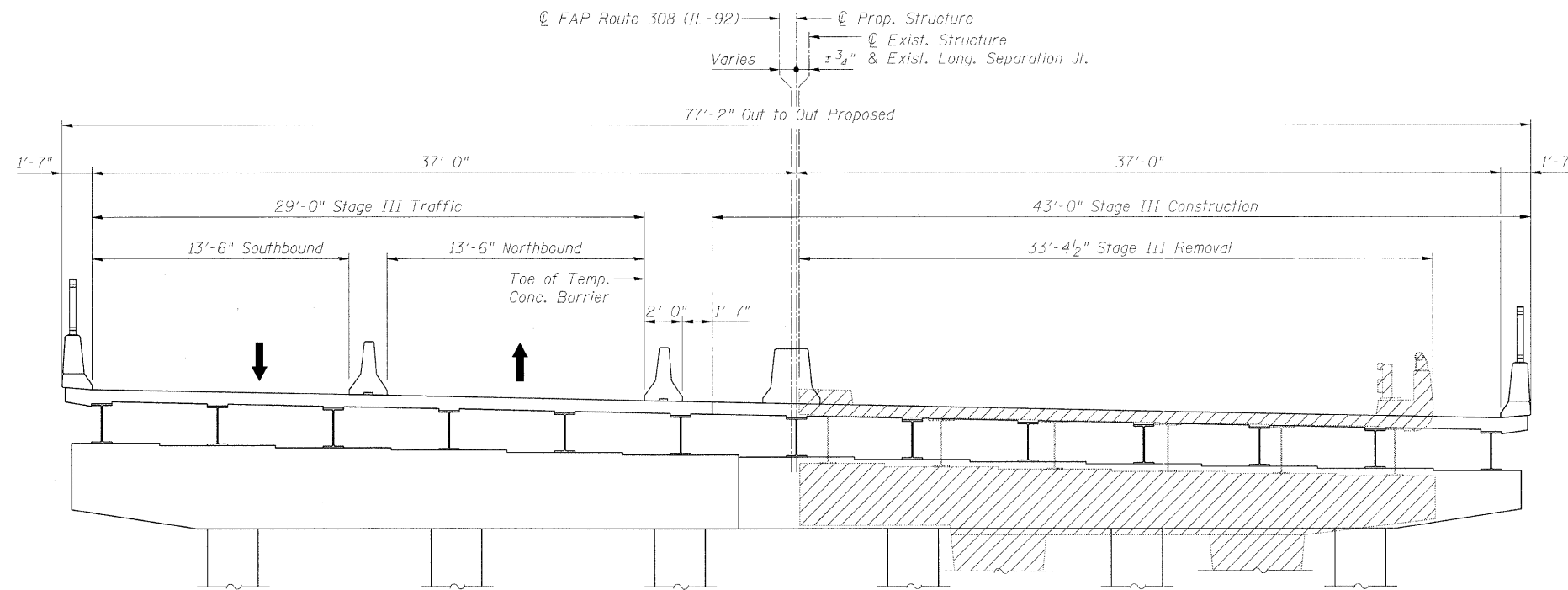
ROUTE NO.	SECTION	COUNTY	TOTAL SHEETS	SHEET NO.
F.A.P. 308	#	ROCK ISLAND	210	179
SHEET NO. 4 27 SHEETS				
FED. ROAD DIST. NO. 7	ILLINOIS	FED. AID PROJECT-		

Contract #64814 * I(HB,HB-1,VB,HB-2)R



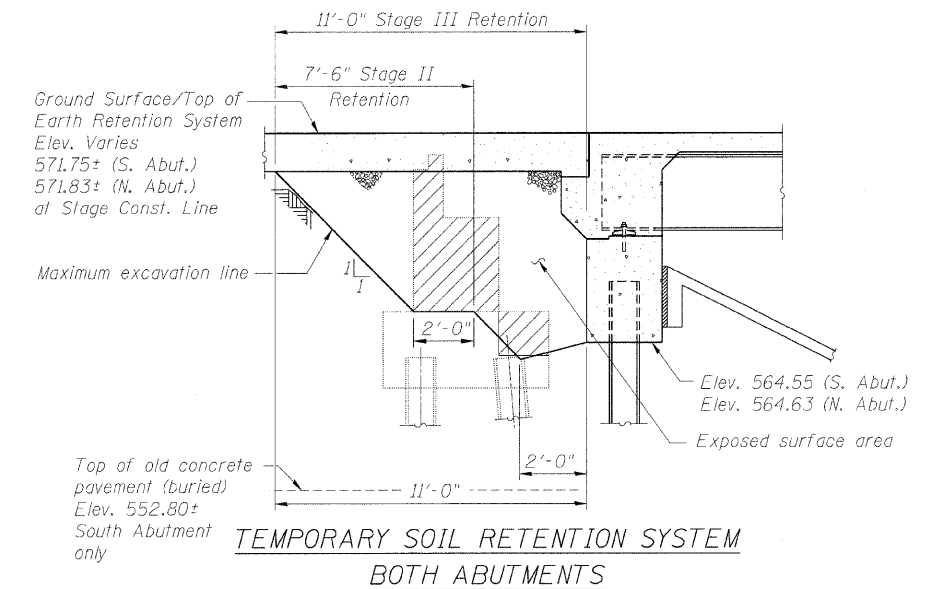
CROSS SECTION (STAGE II)

Looking North



CROSS SECTION (STAGE III)

Looking North



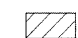
TEMPORARY SOIL RETENTION SYSTEM
BOTH ABUTMENTS

Note:
A cantilevered sheet piling design does not appear feasible and additional members or other retention system may be necessary. The Contractor shall submit a temporary soil retention system design including plan details and calculations for review and acceptance by the Engineer.

DESIGNED	AMK
CHECKED	CMM
DRAWN	OS
CHECKED	RWC

LOCHNER
H.W. LOCHNER, INC., CHICAGO, ILLINOIS

LEGEND

 Indicates Removal of Existing Structures

STAGING DETAILS
IL ROUTE 92 (CENTENNIAL EXPRESSWAY)
OVER 7th AVENUE
FAP ROUTE 308 SEC. I(HB)R
ROCK ISLAND COUNTY
STATION 1547+22.56
STRUCTURE NO. 081-0170