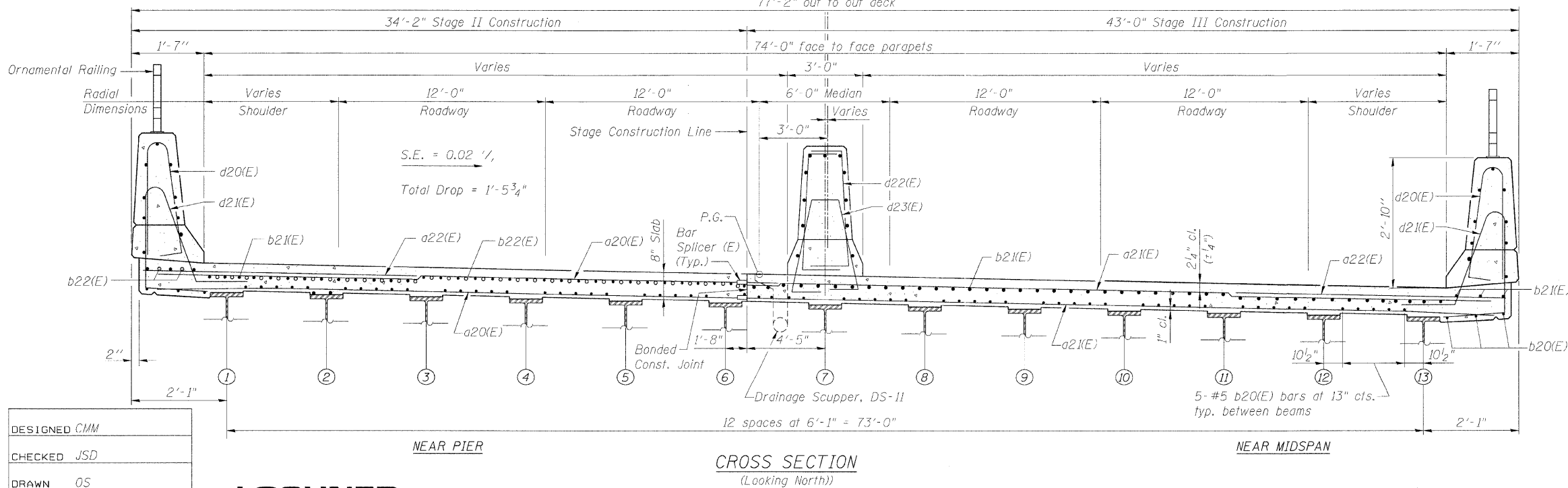
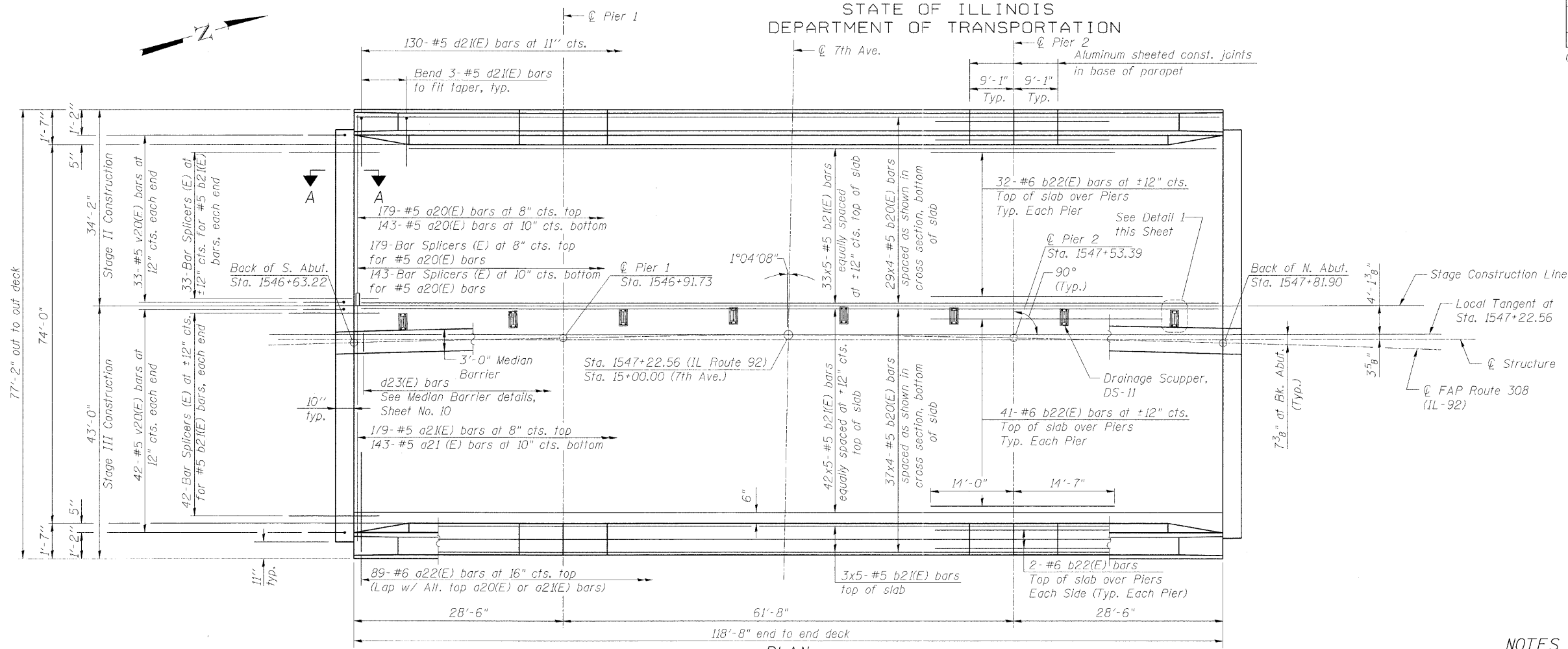


STATE OF ILLINOIS  
DEPARTMENT OF TRANSPORTATION

ROUTE NO.	SECTION	COUNTY	STATION	SHEET NO.
F.A.P. 308	*	ROCK ISLAND	210	183
SHEET NO. 8 27 SHEETS				
FED. ROAD DIST. NO. 7	ILLINOIS	FED. AID PROJECT		
Contract #64814 * (HB, HB-1, VB, HB-2)R				



NOTES

1. Bars indicated thus 20x3-#5 etc. indicates 20 lines of bars with 3 lengths per line.
2. For scupper layout details see Sheet No. 14
3. For parapet reinforcement see Sheet No. 11
4. For median barrier reinforcement see Sheet No. 10
5. For Bar List and Bill of Material see Sheet No. 11
6. For Section A-A see Sheet No. 9
7. All edges shall have a 3/4" chamfer except as noted.
8. Cut longitudinal reinforcement to clear drainage scuppers.
9. Protective coat shall be applied to the deck and top and inside faces of parapet.
10. For spacing of partial depth parapet joints see Sheet No. 11
11. For spacing of partial depth median barrier joints see Sheet No. 10
12. For Bar Splicer details see Sheet No. 23
13. For Section B-B see Sheet No. 10

DECK PLAN  
IL ROUTE 92 (CENTENNIAL EXPRESSWAY)  
OVER 7th AVENUE  
FAP ROUTE 308 SEC. 1(HB)R  
ROCK ISLAND COUNTY  
STATION 1547+22.56  
STRUCTURE NO. 081-0170

DESIGNED	CMM
CHECKED	JSD
DRAWN	OS
CHECKED	RWC

**LOCHNER**  
H.W. LOCHNER, INC., CHICAGO, ILLINOIS

t:\2082\struet\dgn\2044027DP1.dgn