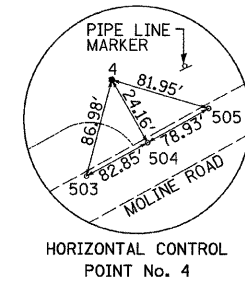
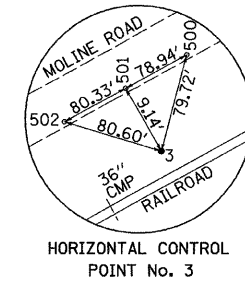
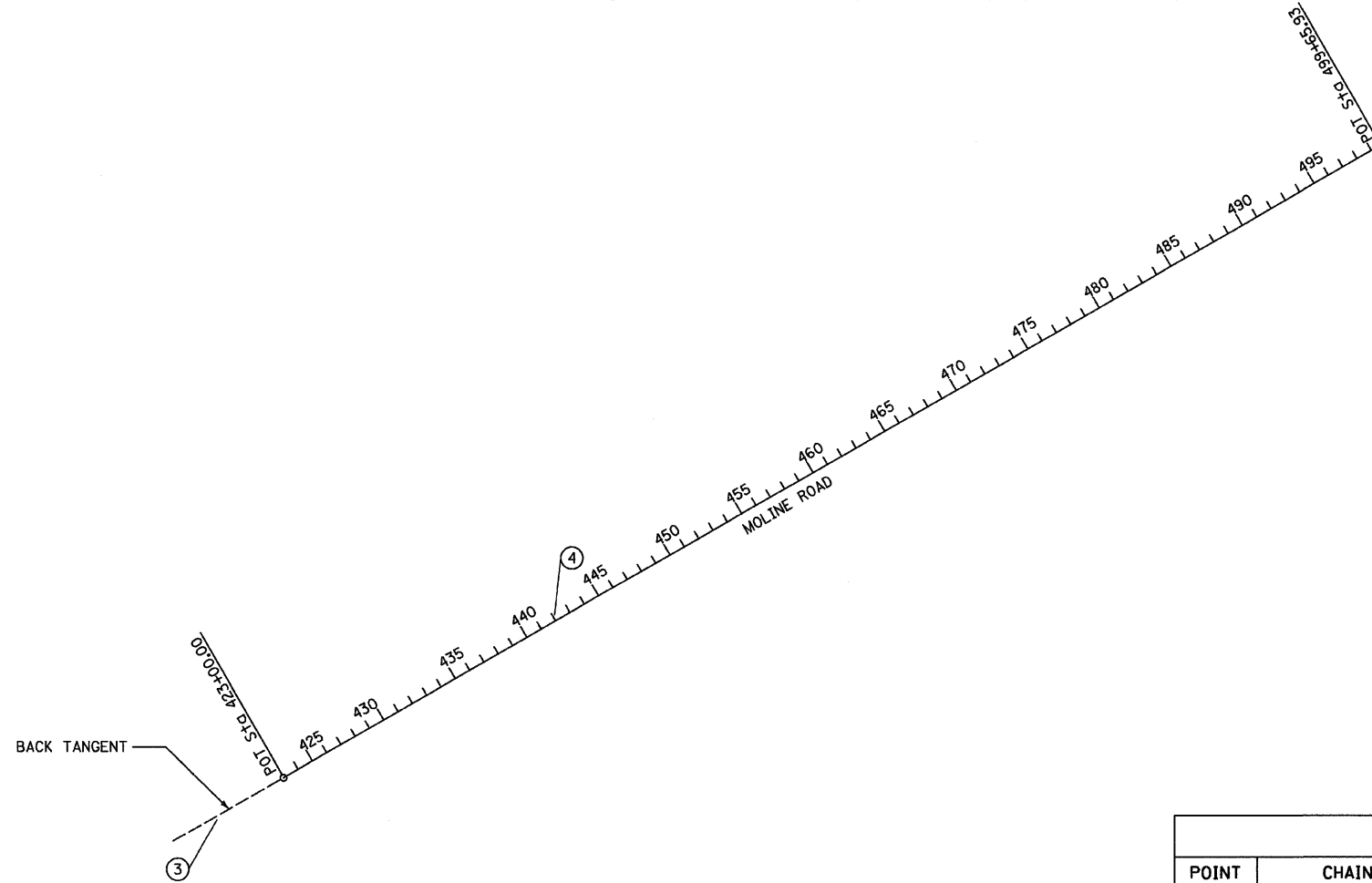


HORIZONTAL & VERTICAL CONTROL

F.A.S. RTE.	SECTION	COUNTY	TOTAL SHEETS	SHEET NO.
203	11BR-1	*	43	6
STA. _____		TO STA. _____		
FED. ROAD DIST. NO. - ILLINOIS FED. AID PROJECT				
• WHITESIDE & ROCK ISLAND				



REFERENCE TIES				
POINT	CHAIN	STATION	OFFSET	DESCRIPTION
500	ALIGNMR	419+05.26	11.22' RT.	SURVEY NAIL IN BITUMINOUS PAINT STRIPE
501	ALIGNMR	418+26.29	11.27' RT.	SURVEY NAIL IN BITUMINOUS PAINT STRIPE
502	ALIGNMR	417+45.93	11.36' RT.	SURVEY NAIL IN BITUMINOUS PAINT STRIPE
503	ALIGNMR	441+31.08	11.38' LT.	SURVEY NAIL IN BITUMINOUS PAINT STRIPE
504	ALIGNMR	442+13.96	11.45' LT.	SURVEY NAIL IN BITUMINOUS PAINT STRIPE
505	ALIGNMR	442+92.92	11.43' LT.	SURVEY NAIL IN BITUMINOUS PAINT STRIPE

HORIZONTAL CONTROL POINTS							
POINT	NORTH	EAST	ELEVATION	CHAIN	STATION	OFFSET	DESCRIPTION
3	1803736.812	2297137.115	580.084	ALIGNMR	418+26.04	20.41' RT.	REBAR WITH RED AMERICAN SURVEY CONSULTANT CAP
4	1804976.859	2299179.370	578.072	ALIGNMR	442+14.63	35.67' LT.	REBAR WITH RED AMERICAN SURVEY CONSULTANT CAP

BENCH MARKS							
POINT	NORTH	EAST	ELEVATION	CHAIN	STATION	OFFSET	DESCRIPTION
403	1804210.9100	2297951.8500	580.79	ALIGNMR	427+68.67	15.90' RT.	CHISELED BOX S.W. CORNER OF BRIDGE DECK
404	1804146.4700	2297942.3900	582.71	ALIGNMR	427+28.32	67.03' RT.	CHISELED BOX N. END OF WEST CONC. RETAINING WALL @ R.R.

Chain ALIGNMR contains:
21 25

Beginning chain ALIGNMR description

```

Point 21          N 1,803,990.9137   E 2,297,537.7217   Sta 423+00.000
Course from 21 to 25  N 60° 04' 44.51" E   Dist 7,665.9283
Point 25          N 1,807,814.7170   E 2,304,181.8910   Sta 499+65.928
    
```

Ending chain ALIGNMR description

FILE NAME = ZBR0303VIC
PLOT SCALE = 500
PLOT DATE = 10/07
OPERATOR = CHAMS