

F.A.P. RTE.	SECTION	COUNTY	TOTAL SHEETS	SHEET NO.
17	101T	OGLE	39	1
FED. ROAD DIST. NO.	ILLINOIS	CONTRACT NO. 64C36		

STATE OF ILLINOIS
DEPARTMENT OF TRANSPORTATION
DIVISION OF HIGHWAYS

**PROPOSED
HIGHWAY PLANS**

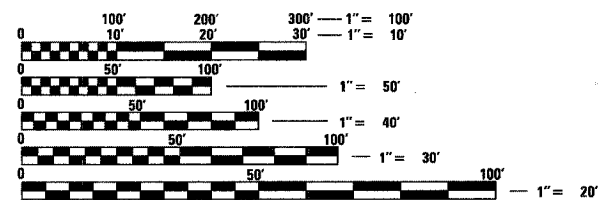
FAP ROUTE 17 (IL 64)
SECTION 101T
PROJECT ACF-0017(122)
OGLE COUNTY
C-92-121-07

FOR INDEX OF SHEETS, SEE SHEET NO. 2
FOR STATE STANDARDS, SEE SHEET NO. 2

D-92-079-06



BROOKVILLE TOWNSHIP SECTION 23, 26

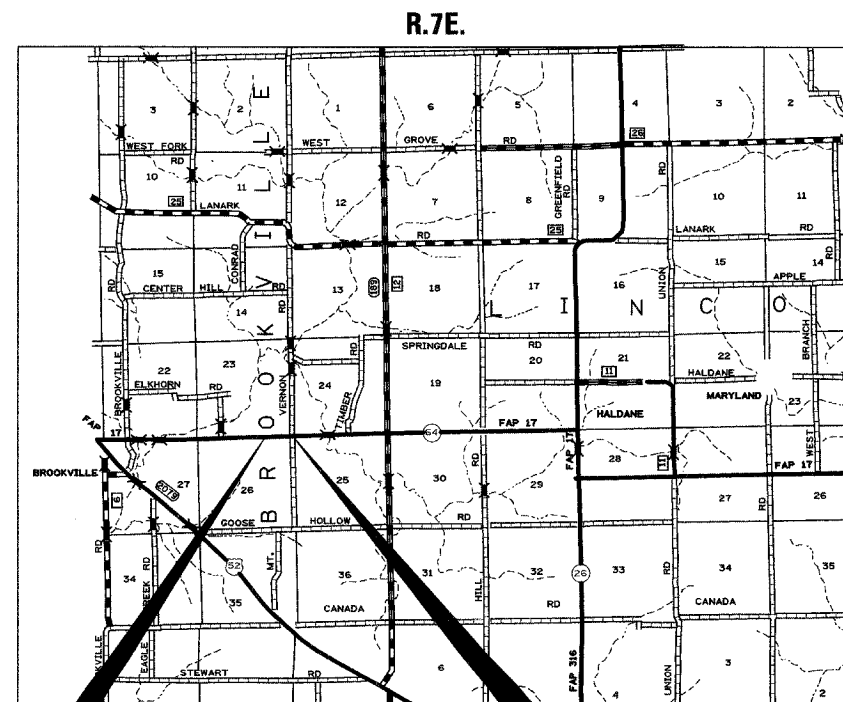


FULL SIZE PLANS HAVE BEEN PREPARED USING STANDARD ENGINEERING SCALES. REDUCED SIZED PLANS WILL NOT CONFORM TO STANDARD SCALES. IN MAKING MEASUREMENTS ON REDUCED PLANS, THE ABOVE SCALES MAY BE USED.

J.U.L.I.E.
JOINT UTILITY LOCATION INFORMATION FOR EXCAVATION
1-800-892-0123
OR 811

PROJECT ENGINEER: BOB WAGNER
SQUAD TECHNICIAN: LANCE NICKLAUS (815) 284-5920

CONTRACT NO. 64C36



IMPROVEMENT BEGINS
STA. 97 + 00.00

R.7E.

IMPROVEMENT ENDS
STA. 105 + 80.71



STATE OF ILLINOIS
DEPARTMENT OF TRANSPORTATION
DIVISION OF HIGHWAYS

SUBMITTED December 6 20 07

George F. Ryan
DEPUTY DIRECTOR OF HIGHWAYS, REGION ENGINEER

February 1, 20 08
Eric E. Harank
Intern ENGINEER OF DESIGN AND ENVIRONMENT

February 1, 20 08
Christine M. Reed
DIRECTOR OF HIGHWAYS, CHIEF ENGINEER