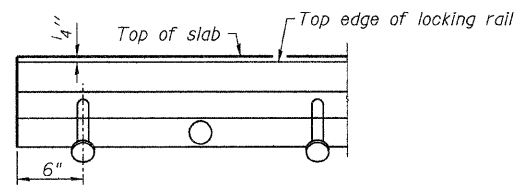


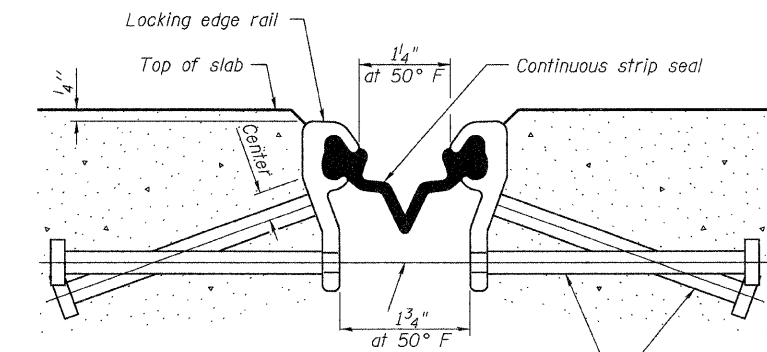
ROUTE NO.	SEC.	COUNTY	TOTAL SHEETS	SHEET NO.
FAS 1247	*	HENRY	80	37
FED. ROAD DIST. NO. 1	ILLINOIS	PROJECT		

SHEET NO. 7
of 16 SHEETS

* (6BR)D CONTRACT NO. 64D10



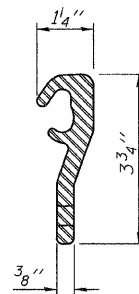
TYPICAL END TREATMENT



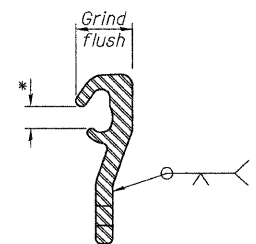
7/16" ϕ holes at 4'-0" cts. for 3/8" ϕ bolts. All bolts shall be burned, sawed, or chipped off flush with the plates after forms are removed, typ.

Place 1/2" ϕ x 6" granular or solid flux filled headed studs conforming to Article 1006.32 of the Std. Specs., automatically end welded at 1'-0" alt. cts. (84 req'd)

SECTION THRU STRIP SEAL JOINT FOR OVERLAY OVER DECK BEAMS



LOCKING EDGE RAIL



* Omit weld at seal opening.

LOCKING EDGE RAIL SPLICE

Notes:

The strip seal shall be made continuous and shall have a minimum thickness of 1/4". The configuration of the strip seal shall match the configuration of the Locking Edge Rails.

The height and thickness of the Locking Edge Rails shown are minimum dimensions. The actual configuration of the Locking Edge Rails and matching strip seal may vary from manufacturer to manufacturer. Flanged edge rails will not be allowed.

The inside of the Locking Edge Rail groove shall be free of weld residue. Locking Edge Rails may be spliced at slope discontinuities and stage construction joints.

The manufacturer's recommended installation methods shall be followed. All steel components shall be galvanized after fabrication according to Article 520.03 of the Standard Specifications.

BILL OF MATERIAL

Item	Unit	Quantity
Preformed Joint Strip Seal	Foot	42

DESIGNED	BAN
CHECKED	JEH
DRAWN	TC/TD
CHECKED	BAN

PREFORMED JOINT STRIP SEAL
F.A.S. 1247 (U.S. ROUTE 6)
OVER MUD CREEK
SECTION (6BR)D
HENRY COUNTY
STATION 666+69.05
STR. NO. 037-0131

HUTCHISON ENGINEERING, INC.
JACKSONVILLE, ILLINOIS

Rev: _____ Date: _____