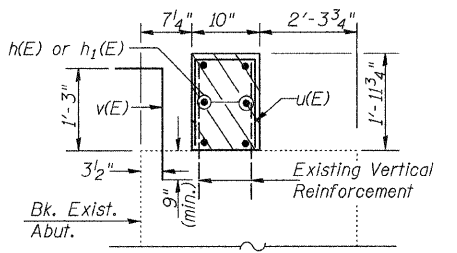


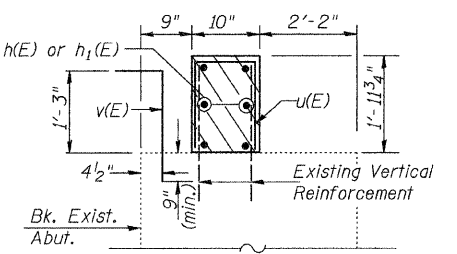
RETAINER DETAIL

* Anchor bolts will be approved threaded rod placed in drilled holes and grouted in place. Cost of retainer and accessories are included with Precast Prestressed Concrete Deck Beams.

** Remove steel wedges after Concrete Wearing Surface has cured.



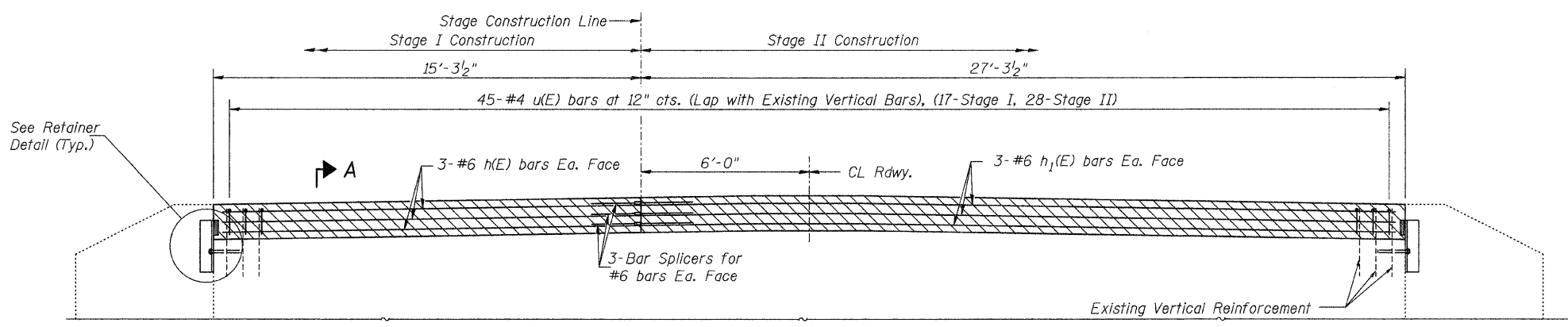
SECTION A-A



SECTION B-B

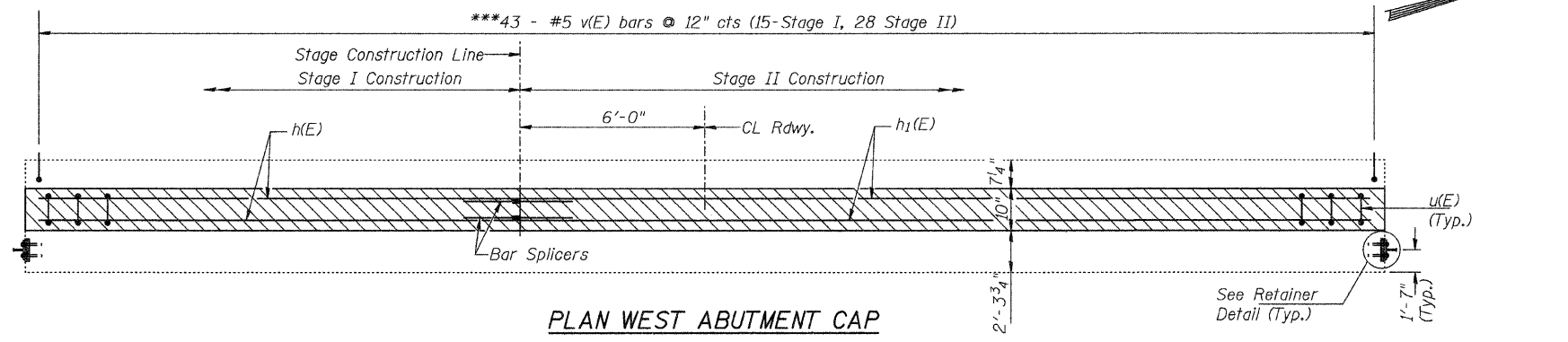
***Epoxy Grout v(E) bars into drilled holes according to Section 584 of the Standard Specifications.

| | |
|----------|-------|
| DESIGNED | BAN |
| CHECKED | JEH |
| DRAWN | TC/TD |
| CHECKED | BAN |

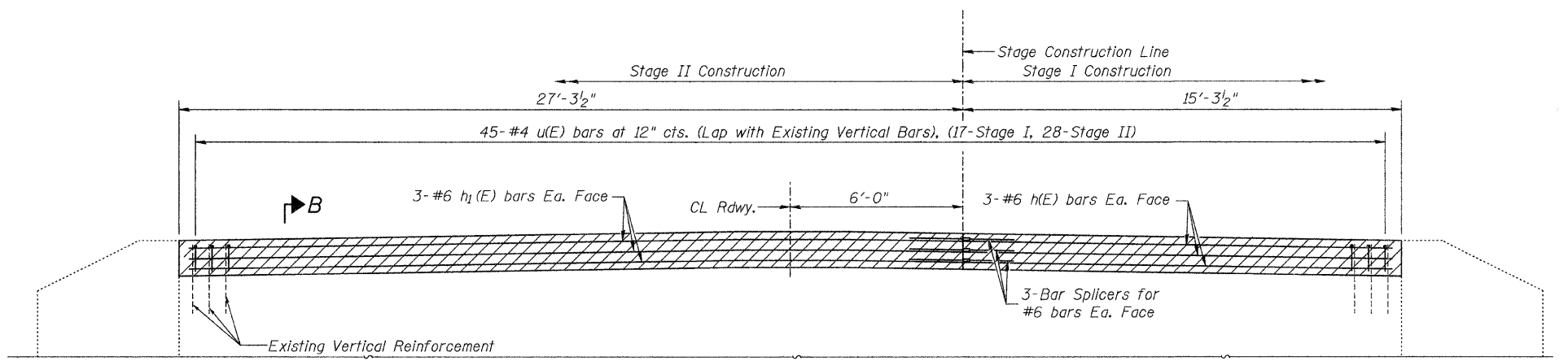


ELEVATION WEST ABUTMENT CAP

(Looking West)

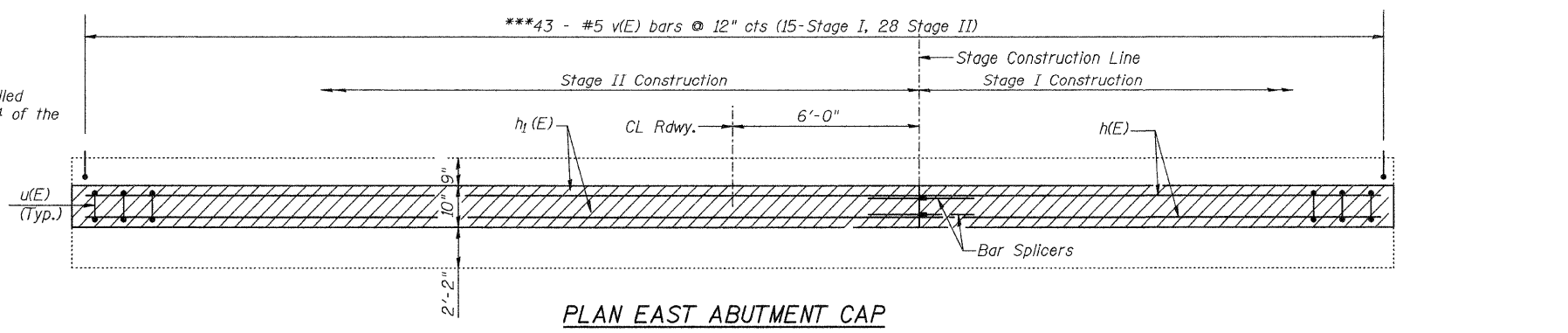


PLAN WEST ABUTMENT CAP

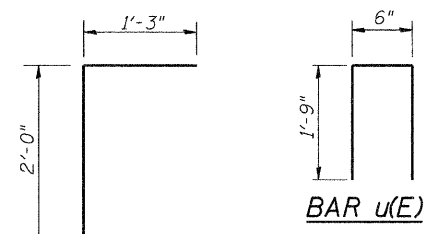


ELEVATION EAST ABUTMENT CAP

(Looking East)



PLAN EAST ABUTMENT CAP



BAR v(E)

MIN. BAR LAP
#4 = 1'-4"

BILL OF MATERIAL

| Bar | No. | Size | Length | Shape |
|----------------------------------|---------|-------|--------|-------|
| h(E) | 12 | #6 | 15'-0" | — |
| h1(E) | 12 | #6 | 27'-0" | — |
| u(E) | 90 | #4 | 4'-0" | U |
| v(E) | 86 | #5 | 3'-3" | V |
| | | | | |
| Concrete Structures | Cu. Yd. | 5.2 | | |
| Reinforcement Bars, Epoxy Coated | Pound | 1,290 | | |
| Bar Splicers | Each | 12 | | |

Notes:

Existing reinforcement bars extending into new construction shall be cleaned, straightened and incorporated into the new construction. Cost to be included with Concrete Removal.

Hatched area shall be poured after Concrete Wearing surface on PPC Deck Beams is in place and cured.

Anchor bolts shall be ASTM F1554 all-thread (or an Engineer-approved alternate material) of the grade(s) and diameter(s) specified. ASTM A307 Grade C anchor bolts may be used in lieu of ASTM F1554 Grade 36 (Fy=36ksi). The corresponding specified grade of AASHTO M314 anchor bolts may be used in lieu of ASTM F1554.

Drilled and set anchor bolts shall be installed according to Article 521.06 of the Standard Specifications.

See Sht 2 of 16 for additional anchor bolt notes.

ABUTMENT DETAILS
F.A.S. 1247 (U.S. ROUTE 6)
OVER MUD CREEK
SECTION (6BR)D
HENRY COUNTY
STATION 666+69.05
STR. NO. 037-0131

HUTCHISON ENGINEERING, INC.
JACKSONVILLE, ILLINOIS

Rev: _____ Date: _____