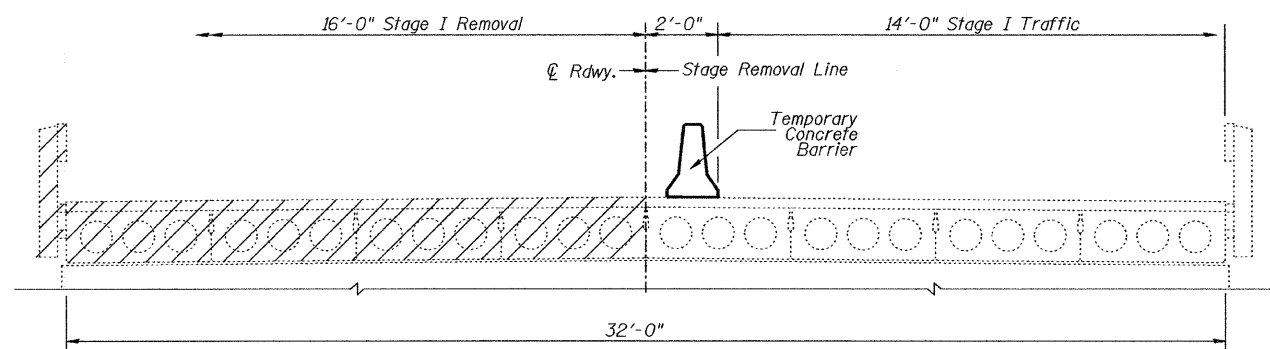


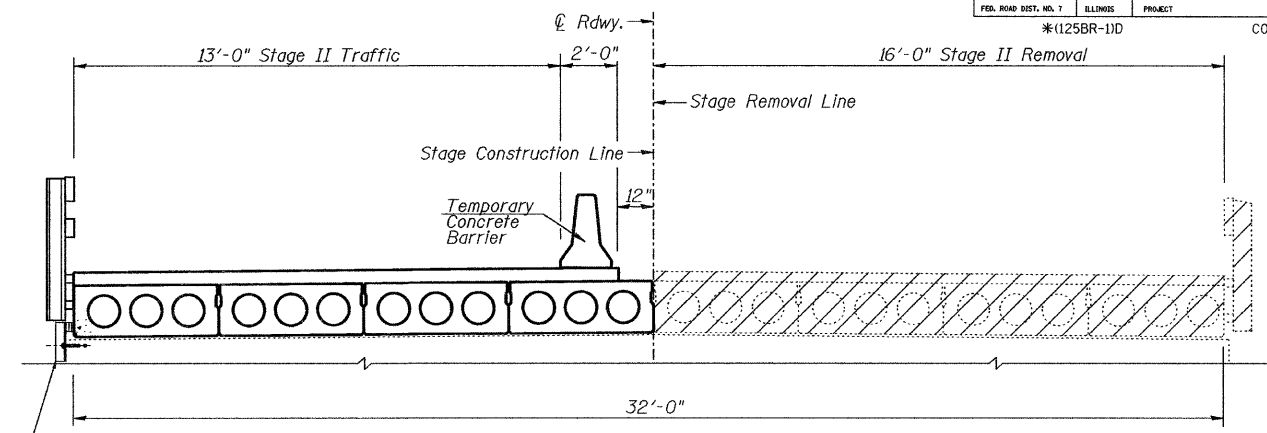
ROUTE NO.	SEC.	COUNTY	TOTAL SHEETS	SHEET NO.
FAP 22	*	HENRY	80	48
FED. ROAD DIST. NO. 7	ILLINOIS	PROJECT	* (125BR-11D)	

SHEET NO. 2
OF 15 SHEETS

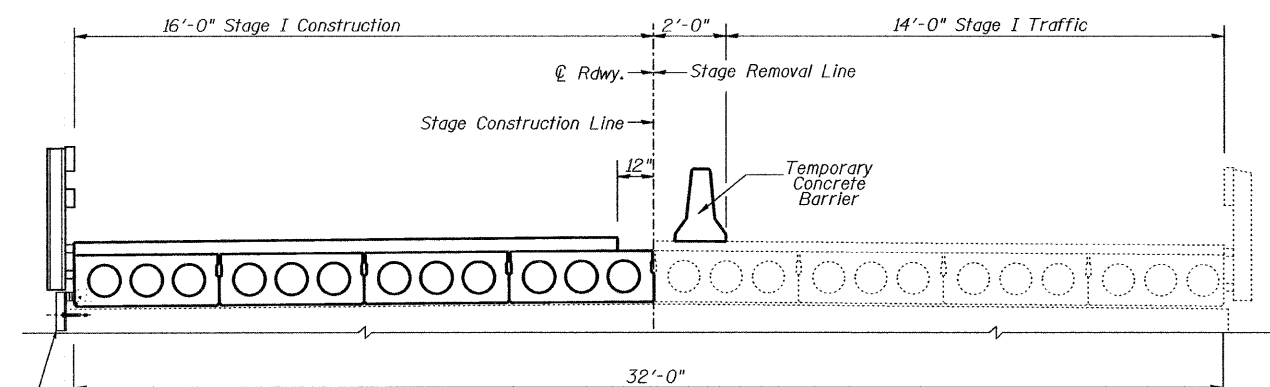
CONTRACT NO. 64D10



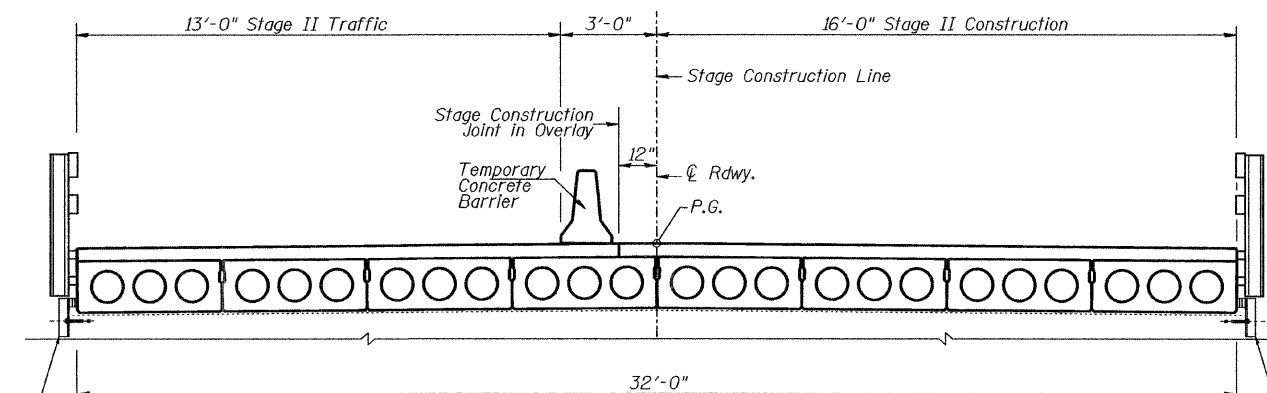
STAGE I REMOVAL



STAGE II REMOVAL



STAGE I CONSTRUCTION

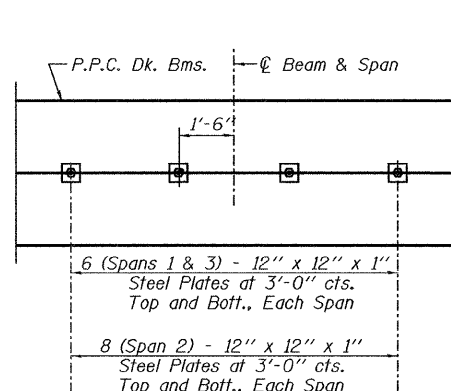


STAGE II CONSTRUCTION

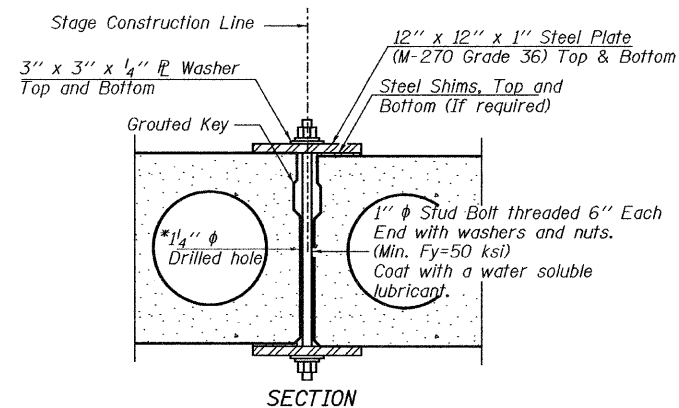
Permanent Side Retainers & Abutments (See Sheet 13 of 15 for details)

Permanent Side Retainers & Abutments (See Sheet 13 of 15 for details)

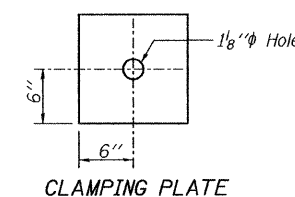
Permanent Side Retainers & Abutments (See Sheet 13 of 15 for details)



PLAN



SECTION



CLAMPING PLATE

Notes:
All cross-sections are looking North. Hatched area indicates Removal of Existing Superstructure.
For Temporary Concrete Barrier Details see sheet 3 of 15.
Anchor bolts shall be ASTM F1554 all-thread (or an Engineer-approved alternate material) of the grade(s) and diameter(s) specified. ASTM A307 Grade C anchor bolts may be used in lieu of ASTM F1554 Grade 36 (Fy=36ksi). The corresponding specified grade of AASHTO M314 anchor bolts may be used in lieu of ASTM F1554.
Drilled and set anchor bolts shall be installed according to Article 521.06 of the Standard Specifications.

SHEAR KEY CLAMPING DETAILS AT STAGE CONST. JT.

Cost included with Precast Prestressed Concrete Deck Beams.

See Stage Construction Details for traffic lanes.

Stage Construction of Precast Prestressed concrete deck beams shall be according to Article 504.06(d) of the Standard Specifications.

* As an alternate to the drilled holes, the Contractor may request the Fabricator to cast 2" diameter semi-circular recesses in the sides of each beam adjacent to the stage construction line. These recesses should align to form a hole at the appropriate locations for the clamping device bolts. If the Contractor elects to use this alternate, the details shall be identified on the shop drawings.

DESIGNED	BAN
CHECKED	JOH
DRAWN	TD
CHECKED	BAN

STAGE CONSTRUCTION DETAILS
FAP 22 (ILLINOIS ROUTE 78)
OVER GREEN RIVER
SEC. (125BR-11D)
HENRY COUNTY
STATION 882+67.79
STR. NO. 037-0129

HUTCHISON ENGINEERING, INC.
JACKSONVILLE, ILLINOIS

Rev: _____ Date: _____