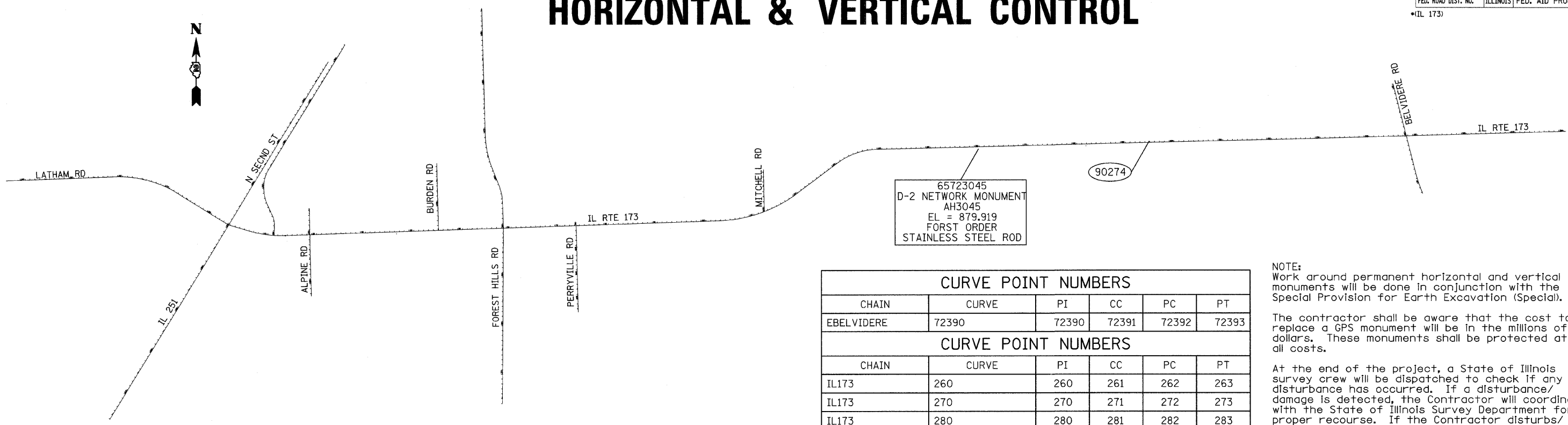


F.A.P. RTE.	SECTION	COUNTY	TOTAL SHEETS	SHEET NO.
*303	129M&TS	WINNEBAGO	110	15
STA.		TO STA.		
FED. ROAD DIST. NO.		ILLINOIS FED. AID PROJECT		

HORIZONTAL & VERTICAL CONTROL



65723045
D-2 NETWORK MONUMENT
AH3045
EL = 879.919
FORST ORDER
STAINLESS STEEL ROD

CURVE POINT NUMBERS					
CHAIN	CURVE	PI	CC	PC	PT
EBELVIDERE	72390	72390	72391	72392	72393
CURVE POINT NUMBERS					
CHAIN	CURVE	PI	CC	PC	PT
IL173	260	260	261	262	263
IL173	270	270	271	272	273
IL173	280	280	281	282	283
IL173	350	350	351	352	353

NOTE:
Work around permanent horizontal and vertical monuments will be done in conjunction with the Special Provision for Earth Excavation (Special).

The contractor shall be aware that the cost to replace a GPS monument will be in the millions of dollars. These monuments shall be protected at all costs.

At the end of the project, a State of Illinois survey crew will be dispatched to check if any disturbance has occurred. If a disturbance/damage is detected, the Contractor will coordinate with the State of Illinois Survey Department for proper recourse. If the Contractor disturbs/damages a GPS monument, the Contractor shall be required to replace the monument at his/her expense.

Chain IL173 contains:
1250 CUR 260 CUR 270 CUR 280 1043 CUR 350 1060

Beginning chain IL173 description

Point 1250 N 2,077,979.2446 E 2,602,322.3661 Sta 2+67.7000

Course from 1250 to PC 260 106° 27' 42.4748" Dist 451.2729'

Curve Data

Curve 260
P.I. Station 10+91.2740 N 2,077,745.8635 E 2,603,112.1809
Delta = 18° 24' 34.9257" (LT)
Degree = 2° 29' 38.0916"
Tangent = 372.3011'
Length = 738.1850'
Radius = 2,297.4237'
External = 29.9705'
Long Chord = 735.0137'
Mid. Ord. = 29.5846'
P.C. Station 7+18.9729 N 2,077,851.3647 E 2,602,755.1409
P.T. Station 14+57.1580 N 2,077,758.5183 E 2,603,484.2668
C.C. N 2,080,054.6145 E 2,603,406.1756

Course from PT 260 to PC 270 88° 03' 07.5491" Dist 8,914.3593'

Curve Data

Curve 270
P.I. Station 112+77.6265 N 2,078,092.3237 E 2,613,299.0605
Delta = 34° 56' 56.5504" (LT)
Degree = 1° 59' 26.2683"
Tangent = 906.1092'
Length = 1,755.6774'
Radius = 2,878.2736'
External = 139.2573'
Long Chord = 1,728.5855'
Mid. Ord. = 132.8307'
P.C. Station 103+71.5173 N 2,078,061.5243 E 2,612,393.4750
P.T. Station 121+27.1947 N 2,078,636.3313 E 2,614,023.6911
C.C. N 2,080,938.1346 E 2,612,295.6402

Course from PT 270 to PC 280 53° 06' 10.9987" Dist 984.6784'

Curve Data

Curve 280
P.I. Station 135+72.6268 N 2,079,504.1363 E 2,615,179.6273
Delta = 35° 32' 38.4282" (RT)
Degree = 3° 59' 08.9285"
Tangent = 460.7538'
Length = 891.7630'
Radius = 1,437.4927'
External = 72.0368'
Long Chord = 877.5319'
Mid. Ord. = 68.5991'
P.C. Station 131+11.8730 N 2,079,227.5101 E 2,614,811.1549
P.T. Station 140+03.6360 N 2,079,515.0152 E 2,615,640.2526
C.C. N 2,078,077.9232 E 2,615,674.1933

Course from PT 280 to 1043 88° 38' 49.4269" Dist 7,167.3471'

Point 1043 N 2,079,684.2435 E 2,622,805.6016 Sta 211+70.9831

Course from 1043 to PC 350 88° 38' 49.4269" Dist 1,220.7365'

Curve Data

Curve 350
P.I. Station 230+42.7654 N 2,079,728.4382 E 2,624,676.8622
Delta = 0° 20' 14.8741" (LT)
Degree = 0° 01' 33.3020"
Tangent = 651.0458'
Length = 1,302.0879'
Radius = 221,072.2180'
External = 0.9586'
Long Chord = 1,302.0860'
Mid. Ord. = 0.9586'
P.C. Station 223+91.7196 N 2,079,713.0663 E 2,624,025.9978
P.T. Station 236+93.8075 N 2,079,747.6432 E 2,625,327.6247
C.C. N 2,300,723.6541 E 2,618,806.2593

Course from PT 350 to 1060 88° 18' 34.5528" Dist 4,483.0011'

Point 1060 N 2,079,879.8864 E 2,629,808.6748 Sta 281+76.8086

Ending chain IL173 description

Chain EBELVIDERE contains:
70040 CUR 72390 72380 70041

Beginning chain EBELVIDERE description

Point 70040 N 2,078,605.1951 E 2,626,836.2881 Sta 87+74.9308

Course from 70040 to PC 72390 337° 12' 23.4544" Dist 7,8626'

Curve Data

Curve 72390
P.I. Station 90+05.9370 N 2,078,818.1614 E 2,626,746.7938
Delta = 8° 30' 28.0589" (RT)
Degree = 1° 54' 35.4935"
Tangent = 223.1437'
Length = 445.4671'
Radius = 3,000.0000'
External = 8.2874'
Long Chord = 445.0579'
Mid. Ord. = 8.2646'
P.C. Station 87+82.7934 N 2,078,612.4437 E 2,626,833.2420
P.T. Station 92+28.2604 N 2,079,034.4049 E 2,626,691.7315
C.C. N 2,079,774.6759 E 2,629,598.9637

Course from PT 72390 to 72380 345° 42' 51.5132" Dist 771.7396'

Point 72380 N 2,079,782.2803 E 2,626,501.2994 Sta 100+00.0000

Course from 72380 to 70041 345° 42' 51.5132" Dist 1,111.4545'

Point 70041 N 2,080,859.3657 E 2,626,227.0402 Sta 111+11.4545

Ending chain EBELVIDERE description

PLOT DATE = Mon Dec 03 10:46:43 2007
FILE NAME = c:\p\proj\jcs\2007\107\107\107\107.dgn
PLOT SCALE = 1000.0000 / 1 IN.
REFERENCE = #REF#