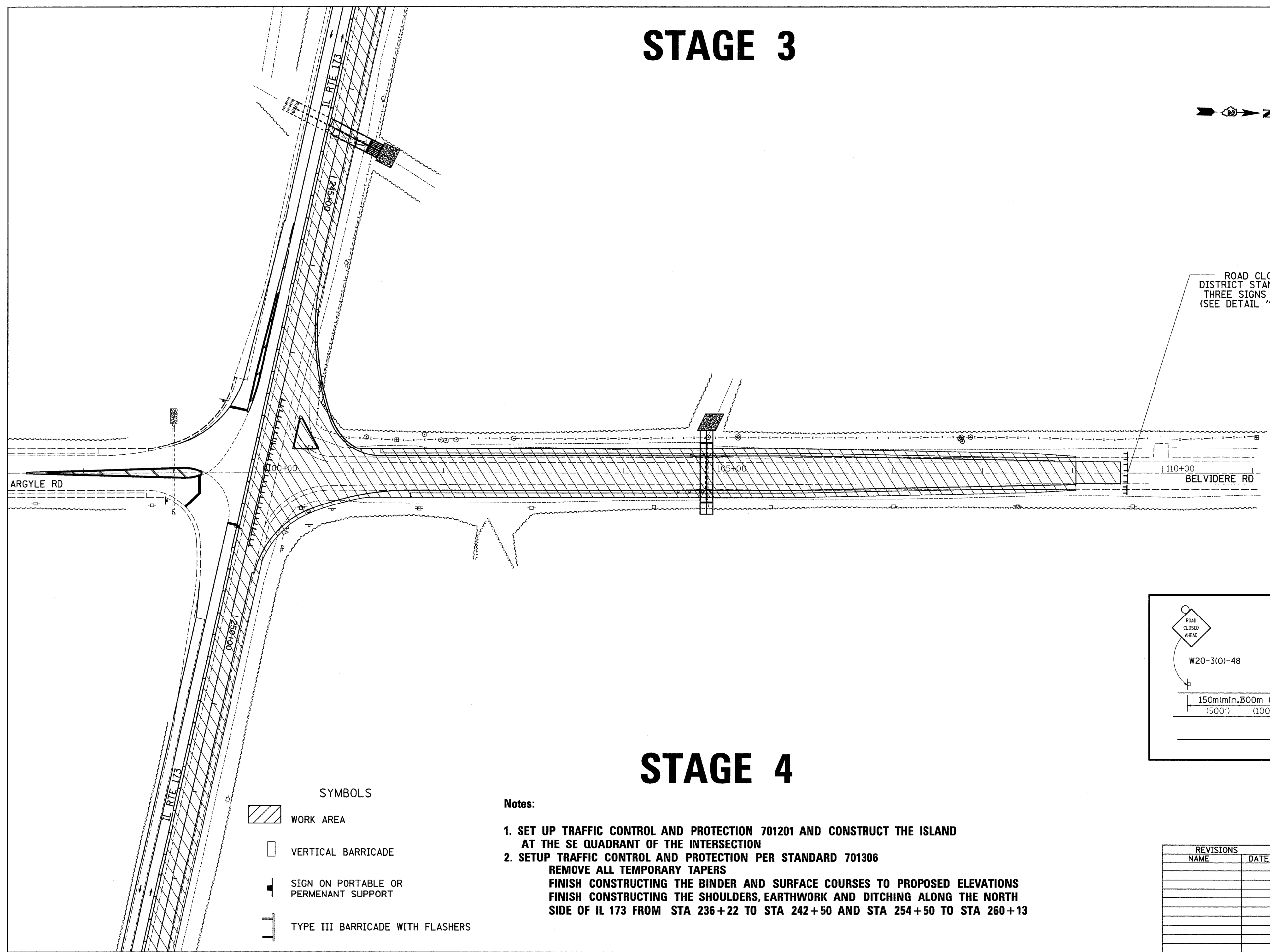


F.A.P. RTE.	SECTION	COUNTY	TOTAL SHEETS	SHEET NO.
*303	129M&TS	WINNEBAGO	110	36

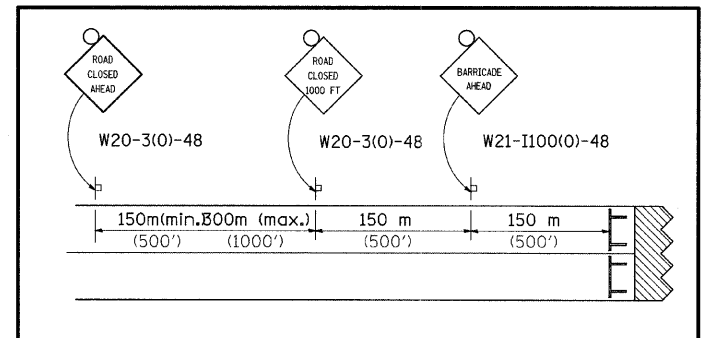
STA. TO STA.  
FED. ROAD DIST. NO. ILLINOIS FED. AID PROJECT

\*(IL 173)

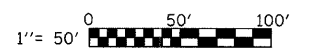
# STAGE 3



ROAD CLOSURE  
DISTRICT STANDARD 40.1  
THREE SIGNS REQUIRED  
(SEE DETAIL "A" BELOW)



DETAIL "A"



# STAGE 4

- SYMBOLS
- WORK AREA
  - VERTICAL BARRICADE
  - SIGN ON PORTABLE OR PERMANENT SUPPORT
  - TYPE III BARRICADE WITH FLASHERS

Notes:

1. SET UP TRAFFIC CONTROL AND PROTECTION 701201 AND CONSTRUCT THE ISLAND AT THE SE QUADRANT OF THE INTERSECTION
  2. SETUP TRAFFIC CONTROL AND PROTECTION PER STANDARD 701306 REMOVE ALL TEMPORARY TAPERS
- FINISH CONSTRUCTING THE BINDER AND SURFACE COURSES TO PROPOSED ELEVATIONS  
FINISH CONSTRUCTING THE SHOULDERS, EARTHWORK AND DITCHING ALONG THE NORTH SIDE OF IL 173 FROM STA 236+22 TO STA 242+50 AND STA 254+50 TO STA 260+13

REVISIONS	
NAME	DATE

ILLINOIS DEPARTMENT OF TRANSPORTATION  
FAP ROUTE 303 (IL 173)  
SECTION 129M&TS  
WINNEBAGO COUNTY

SCALE: VERT. HORIZ. DATE  
DRAWN BY CHECKED BY

PLOT DATE = Mon Dec 03 13:24:42 2007  
FILE NAME = c:\p\projets\p2007\701\dr07\07.rvt  
PLOT SCALE = 50.0000 / 1"  
USER NAME = polrnmj