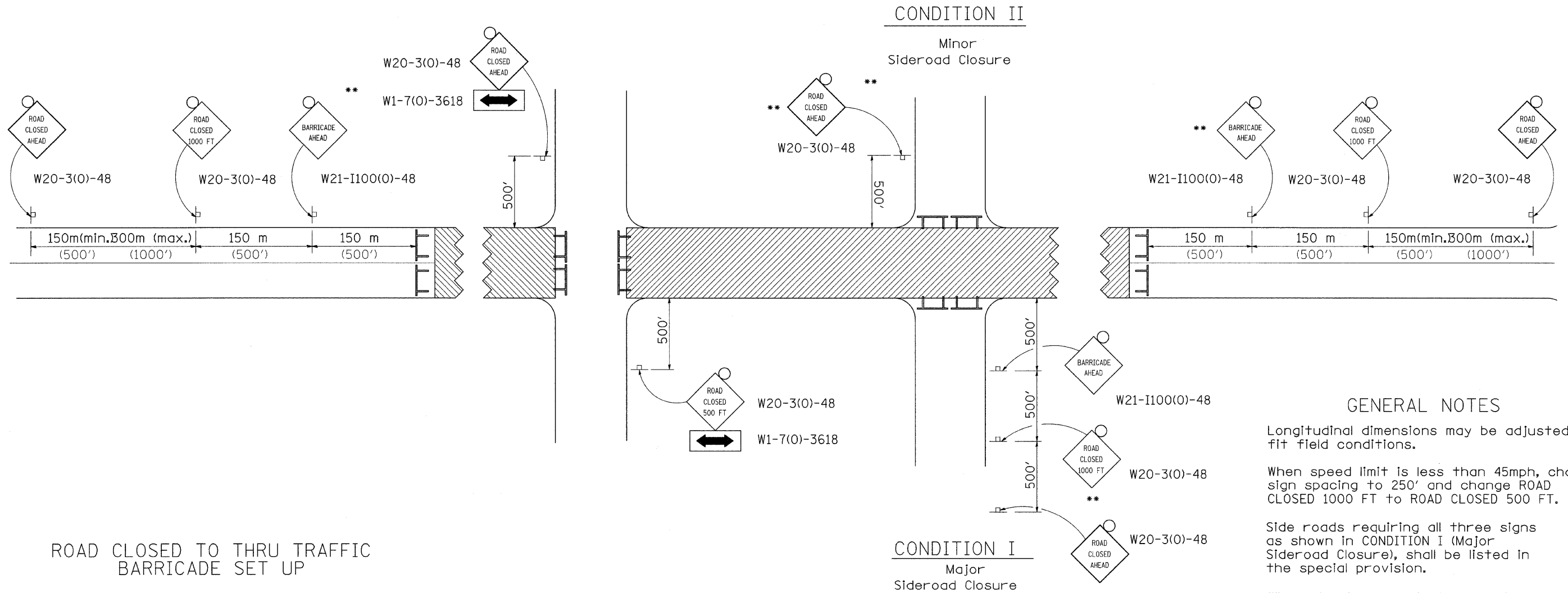


F.A.P. RYE	SECTION	COUNTY	TOTAL SHEETS	SHEET NO.
*303	129M&TS	WINNEBAGO	110	64
STA.		TO STA.		
FED. ROAD DIST. NO.		ILLINOIS FED. AID PROJECT		

# TRAFFIC CONTROL FOR ROAD CLOSURE

\*(IL 173)



**GENERAL NOTES**

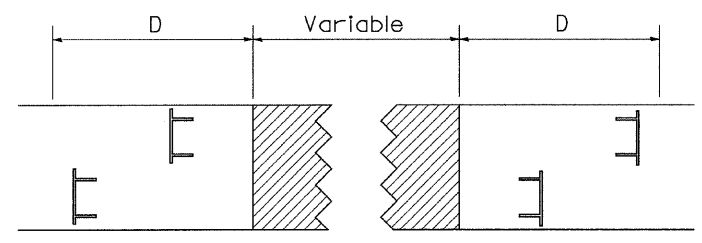
Longitudinal dimensions may be adjusted to fit field conditions.

When speed limit is less than 45mph, change sign spacing to 250' and change ROAD CLOSED 1000 FT to ROAD CLOSED 500 FT.

Side roads requiring all three signs as shown in CONDITION I (Major Sideroad Closure), shall be listed in the special provision.

\*\* Where local access is to be maintained, barricades are to be set up as shown in Road Closed to thru traffic.

Type III Barricades and R11-2-4830 signs shall be as shown in "Road Closed To All Traffic" detail on Highway Standard 702001.



Type III Barricades and R11-4-4830 signs shall be as shown in "Road Closed To All Thru Traffic" detail on Highway Standard 702001. If the distance "D" exceeds 600 m (2000') an additional set of barricades and R11-4-4830 shall be placed at each end of the work area.

- SYMBOLS**
- Work area
  - Type III Barricade with Flashers
  - Sign with flashing light

All dimensions are in millimeters (inches) unless otherwise shown.

TYPICAL APPLICATION FOR ROAD CLOSURE

PLOT DATE = Mon, Dec 03, 14:36:21, 2007  
 FILE NAME = c:\p\projects\129m&ts\129m&ts.dwg  
 PLOT SCALE = 60.0000  
 REFERENCE = MIEP\*