

F.A.U. RTE.	SECTION	COUNTY	TOTAL SHEETS	SHEET NO.
5564	111PM	WHITESIDE	16	1

STATE OF ILLINOIS
DEPARTMENT OF TRANSPORTATION
DIVISION OF HIGHWAYS

**PROPOSED
HIGHWAY PLANS**

FAU ROUTE 5564 (US-30)
SECTION 111PM
WHITESIDE COUNTY
C-92-003-08

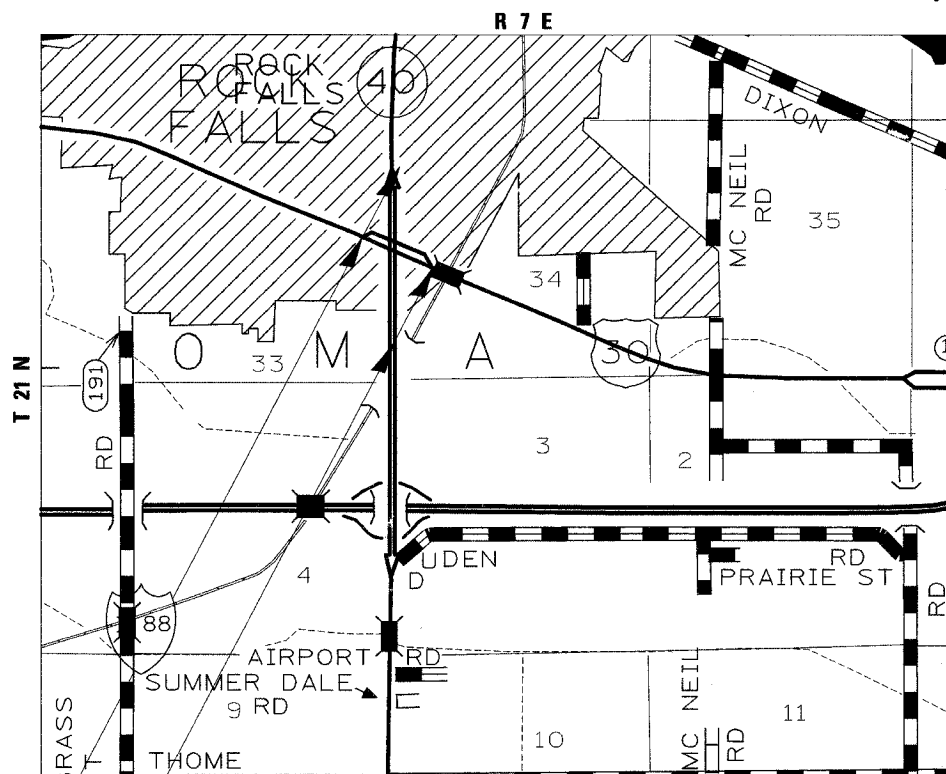
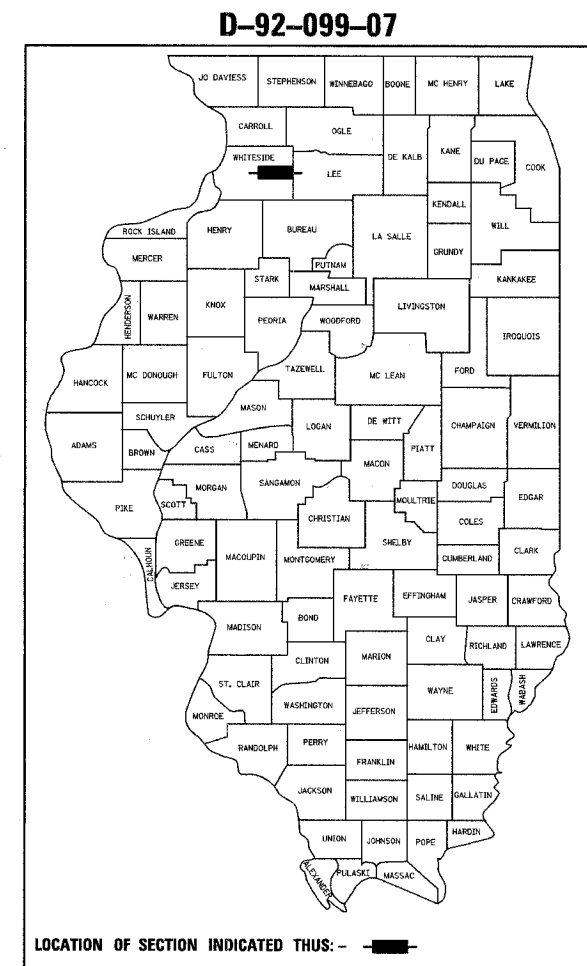
PROJECT ACHSIP-5564(003)

INDEX

- 1 COVER SHEET, INDEX AND STANDARDS
- 2 SUMMARY OF QUANTITIES
- 3 GENERAL NOTES
- 4 TYPICAL SECTIONS
- 5 STAGING DETAILS
- 6 SCHEDULE OF QUANTITIES
- 7 PAVEMENT MARKING SCHEDULE
- 8 - 11 PAVEMENT MARKING
- 12 - 13 DETECTOR LOOPS
- 14 ROUGH GROOVED SURFACE SIGN (91.2)
- 14 STAY IN YOUR LANE SIGN
- 15 - 16 TYPICAL PAVEMENT MARKINGS (41.1)

STATE STANDARDS

- 701901 TRAFFIC CONTROL DEVICES
- 701602-03 TRAFFIC CONTROL AND PROTECTION, STANDARD 701602
- 701701-05 TRAFFIC CONTROL AND PROTECTION, STANDARD 701701
- 701426-02 LANE CLOSURE, MULTILANE, INTERMITTENT OR MOVING OPERATION, FOR SPEEDS > 45 MPH
- 720011 METAL POSTS FOR SIGNS, MARKERS AND DELINEATORS
- 728001 TELESCOPING STEEL SIGN SUPPORT
- 729001 APPLICATIONS OF TYPES A AND B METAL POSTS (FOR SIGNS AND MARKERS)
- 780001-01 TYPICAL PAVEMENT MARKINGS
- 781001-02 TYPICAL APPLICATIONS RAISED REFLECTIVE PAVEMENT MARKERS
- 857001 STANDARD PHASE DESIGNATION DIAGRAMS AND PHASE SEQUENCES
- 886001 DETECTOR LOOP INSTALLATIONS
- 886006 TYPICAL LAYOUT FOR DETECTOR LOOPS



IMPROVEMENT BEGINS
STA 186+01 US 30
STA 11+45 IL 40

IMPROVEMENT ENDS
STA 196+80 US 30
STA 20+65 IL 40

GROSS LENGTH = NET LENGTH = 1079' = .20 MILES US 30
GROSS LENGTH = NET LENGTH = 920' = .17 MILES IL 40

COLOMA TOWNSHIP, SECTION 33,34

J.U.L.I.E.
JOINT UTILITY LOCATION INFORMATION FOR EXCAVATION
1-800-892-0123

CONTRACT NO. 64D53

SQUAD LEADER CHRIS CONDERMAN (815) 284-5955

PROJECT ENGINEER REBECCA MARRUFFO



STATE OF ILLINOIS
DEPARTMENT OF TRANSPORTATION
DIVISION OF HIGHWAYS

SUBMITTED DECEMBER 6 20 07

George F. Ryan
DEPUTY DIRECTOR OF HIGHWAYS, REGION ENGINEER

February 1, 20 08
Eric E. Harms
ENGINEER OF DESIGN AND ENVIRONMENT

February 1, 20 08
Christine M. Reed
DIRECTOR OF HIGHWAYS, CHIEF ENGINEER

PRINTED BY THE AUTHORITY
OF THE STATE OF ILLINOIS

F.A.U. RTE.	SECTION	COUNTY	TOTAL SHEETS	SHEET NO.
5564	111PM	WHITESIDE	16	2
STA.		TO STA.		
FED. ROAD DIST. NO.	ILLINOIS	FED. AID PROJECT		

SUMMARY OF QUANTITIES

CODE NO.	ITEM	UNITS	Total Quantity	90 % Fed. 10 % State I 000-2A URBAN
40600990	TEMPORARY RAMP	SQ YD	150	150
40603340	HOT-MIX ASPHALT SURFACE COURSE, MIX "D", N70	TON	292	292
44000155	HOT-MIX ASPHALT SURFACE REMOVAL, 1 1/2"	SQ YD	3,458	3,458
67100100	MOBILIZATION	L SUM	1	1
70102632	TRAFFIC CONTROL AND PROTECTION, STANDARD 701602	L SUM	1	1
70102635	TRAFFIC CONTROL AND PROTECTION, STANDARD 701701	L SUM	1	1
70300100	SHORT-TERM PAVEMENT MARKING	FOOT	1,904	1,904
70301000	WORK ZONE PAVEMENT MARKING REMOVAL	SQ FT	791	791
* 78100100	RAISED REFLECTIVE PAVEMENT MARKER	EACH	309	309
* 78000100	THERMOPLASTIC PAVEMENT MARKING - LETTERS ^{AND} SYMBOLS	SQ FT	390	390
* 78000200	THERMOPLASTIC PAVEMENT MARKING - LINE 4"	FOOT	7,051	7,051
* 78000500	THERMOPLASTIC PAVEMENT MARKING - LINE 8"	FOOT	448	448
* 78000600	THERMOPLASTIC PAVEMENT MARKING - LINE 12"	FOOT	679	679
* 78000650	THERMOPLASTIC PAVEMENT MARKING - LINE 24"	FOOT	214	214
78300100	PAVEMENT MARKING REMOVAL	SQ FT	1,327	1,327
78300200	RAISED REFLECTIVE PAVEMENT MARKER REMOVAL	EACH	170	170
+ 85700505	FULL-ACTUATED CONTROLLER IN EXISTING CABINET, SPECIAL	EACH	1	1
87301515	ELECTRIC CABLE IN CONDUIT, LEAD-IN, No. 18, 3PRR	FOOT	617	617
+ 88600400	DETECTOR LOOP, SPECIAL	FOOT	509	509
+ X0962500	REMOVE EXISTING TRAFFIC SIGNAL EQUIPMENT	L SUM	1	1
+ X8850106	INDUCTIVE LOOP DETECTOR, RACK MOUNTED	EACH	4	4
* SPECIALTY ITEMS				
+ NON- PARTICIPATING ITEMS				

PLOT DATE = Thu Dec 06 09:05:37 2007
 FILE NAME = s:\projects\10281967\10281967.dgn
 USER NAME = hennicke

GENERAL NOTES

ROUTE NO.	SEC.	COUNTY	TOTAL SHEETS	SHEET NO.
FAU 5564 (US 30)	111PM	Whiteside	16	3
FED ROAD DIST. NO.	ILLINOIS	PROJECT		
Contract #64D53				

The following Mixture Requirements are applicable for this project:

Mixture Uses(s):	Surface		
PG:	PG 64-22		
Design Air Voids	4.0 @ N70		
Mixture Composition (Gradation Mixture)	IL 9.5 or 12.5		
Friction Aggregate	D		
20 Year ESAL	4.1		

The Contractor shall place temporary hot-mix asphalt tapers along all sides of the utility structures protruding above the milled surface. The temporary tapers shall extend 2' outside of the castings, except for the approach side to traffic shall have a 4' taper length. Hot-mix asphalt meeting the approval of the Engineer shall be used, no cold millings will be allowed. The cost of the material, placement, maintenance, removal and disposal of said work will be included in the Pay Item for Hot-Mix Asphalt Surface Removal.

Bituminous and Aggregate prime coat shall be placed in accordance with Section 406 of the Standard Specifications. The cost of the prime coats shall be included in the contract unit price per metric ton (ton) for HOT-MIX SURFACE COURSE of the type specified.

Pavement Marking shall be done according to Standard 780001, except as follows:

1. All words, such as ONLY, shall be 2.4 m (8 feet) high.
2. All non-freeway arrows shall be the large size.
3. The distance between yellow no-passing lines shall be 200 mm (8"), not 180 mm (7") as shown in the detail of Typical Lane and Edge Lines.

The Contractor shall be responsible for protecting utility property during construction operations as outlined in Article 107.31 of the Standard Specifications. A minimum of 48 hours advance notice is required for non-emergency work. The JULIE number is 800-892-0123. The following listed utilities located within the project limits or immediately adjacent to the project construction limits are members of JULIE:

Commonwealth Edison Company
NICOR Gas Co.
Lightcore

AT&T
Insight Communications

Mr. Paul A. Jakubczak
City of Rock Falls
1109 Industrial Park Rd.
Rock Falls, IL 61071

The intent of the Hot-Mix Asphalt surface removal is to mill all of the existing pavement marking on the left turn lanes.

The contractor must place the Hot-Mix Asphalt Surface Course, Mix "D", N70 within 24 hours after milling. No work will be allowed on weekends.

When milling and placing Hot-Mix Asphalt Surface Course, Mix "D", N70, the existing crown must be kept.

When placing Hot-Mix Asphalt Surface Course, Mix "D", N70, it will tie into existing handhole.

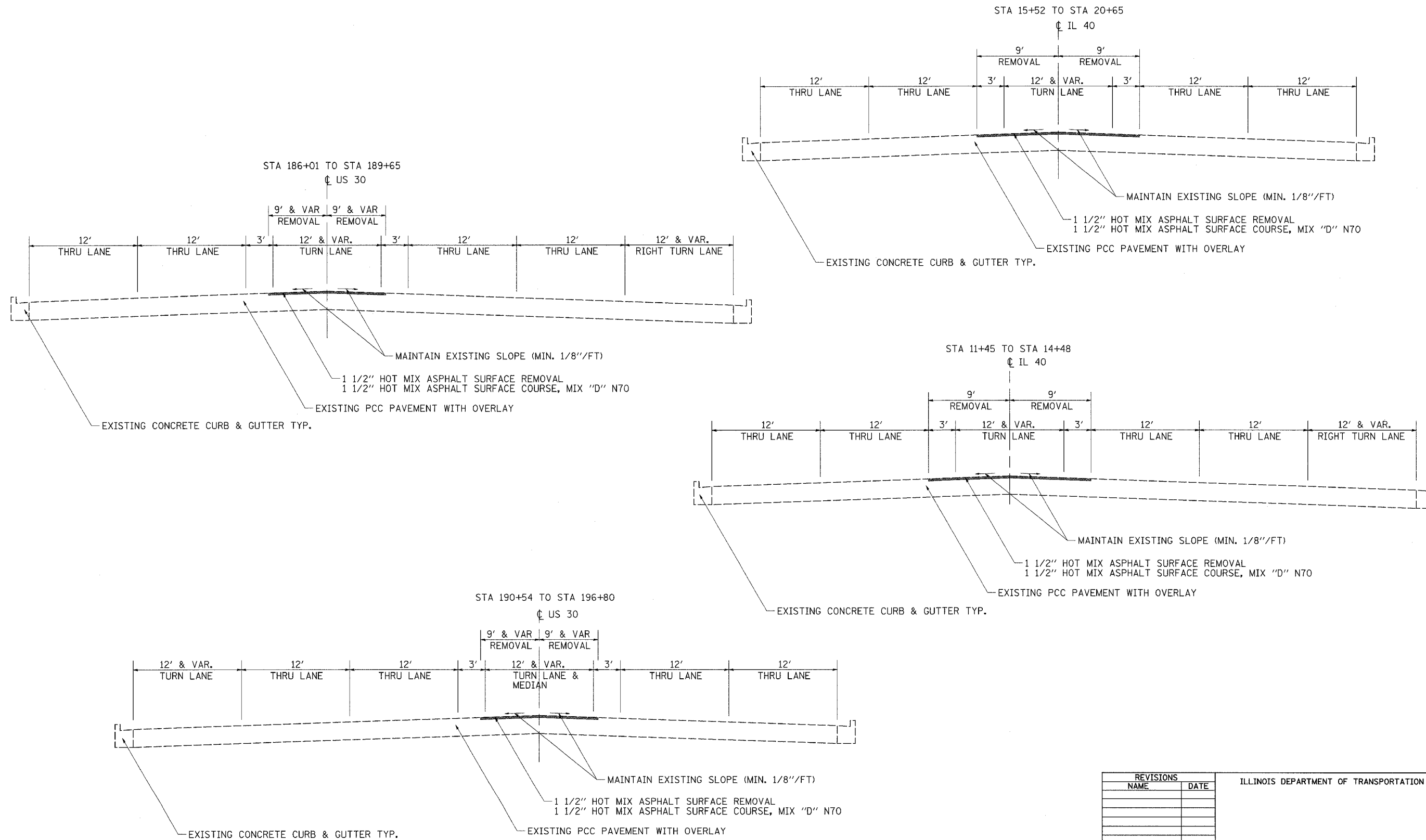
The Raised Reflective Pavement Marker Removal that is not in the milling area will be filled in with Hot-Mix Asphalt Surface Course, Mix "D", N70 hand method and will be placed in accordance with Section 406 of the Standard Specifications. The cost of filling in the marker holes shall be included in the contract unit price per Ton for HOT MIX SURFACE COURSE of the type specified.

The contractor must mill around the handholes. The cost of milling around the handholes shall be included in the contract unit price per Square Yard for HOT-MIX ASPHALT SURFACE REMOVAL, 1½".

Program: 3
(Arch. Size)
Enlarge
200%
Enlarge 107%

F.A.U. RTE.	SECTION	COUNTY	TOTAL SHEETS	SHEET NO.
5564	111PM	WHITESIDE	16	4
STA.		TO STA.		
FED. ROAD DIST. NO.		ILLINOIS FED. AID PROJECT		

TYPICAL SECTIONS



PLOT DATE = Thu, Dec 06, 07:27:04, 2007
 FILE NAME = c:\pav\projects\62091907\111PM\111PM.dgn
 PLOT SCALE = 28.0000' / 1" IN.
 USER NAME = hmsmk

REVISIONS	
NAME	DATE

ILLINOIS DEPARTMENT OF TRANSPORTATION

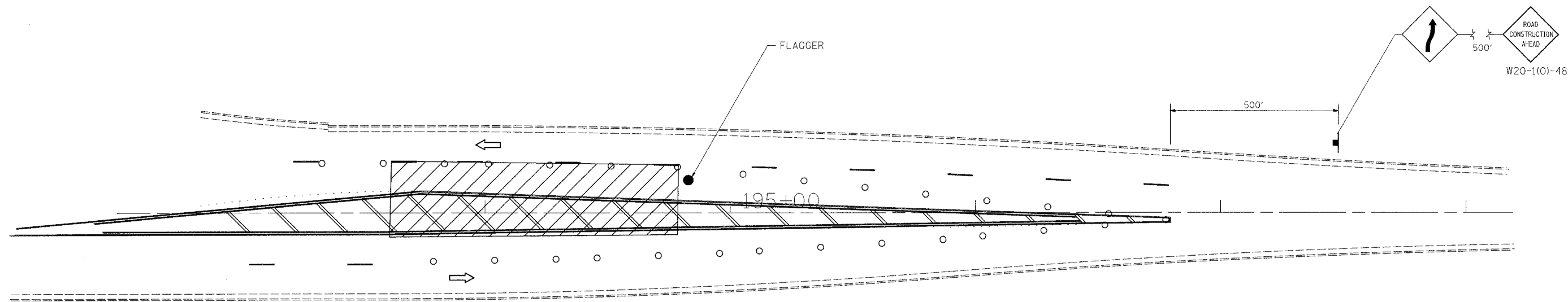
SCALE: VERT. _____
 HORIZ. _____

DATE _____

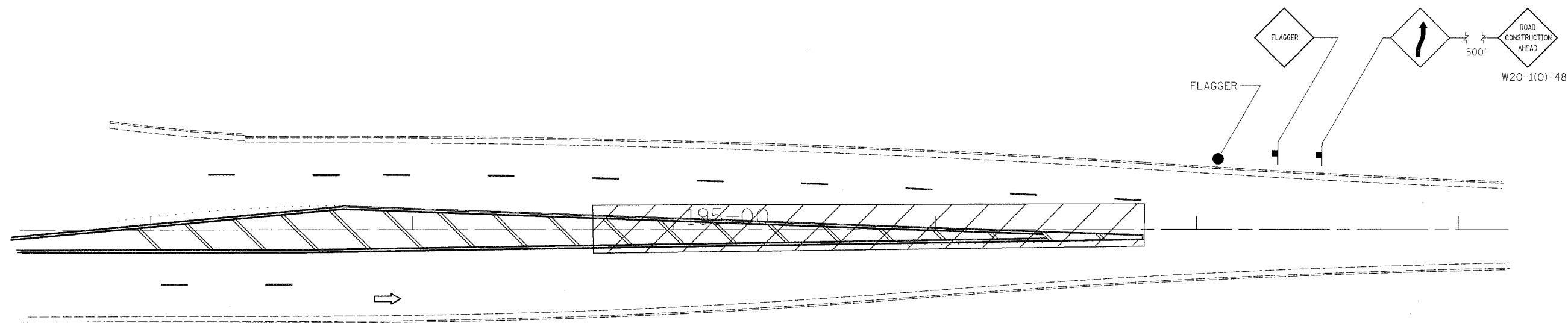
DRAWN BY _____
 CHECKED BY _____

F.A.U. RTE.	SECTION	COUNTY	TOTAL SHEETS	SHEET NO.
5564	111PM	WHITESIDE	16	5
STA.		TO STA.		
FED. ROAD DIST. NO.	ILLINOIS	FED. AID PROJECT		

STAGING DETAILS



DETAIL A



DETAIL B

STAGE NOTES

1. WHEN WORK ACTIVITIES START OR END WITHIN 2500' OF THE EXISTING TRANSITION, USE THIS STANDARD.
2. TO BE USED IN CONJUNCTION WITH 701602.
3. TO BE INCLUDED IN THE COST OF STANDARD 701602.
4. FLAGGERS ARE REQUIRED WHEN NORMAL TRAFFIC FLOW IS INTERRUPTED AND WORKERS ARE ON THE PAVEMENT.
5. SPACING OF DEVICES SHALL BE AS SHOWN ON 701602.
6. WHEN WORKING IN TRANSITION OF THE EAST END OF US 30, FLAGGERS WILL BE USED WITH NECESSARY SIGNING, PAID FOR AS STANDARD 701602.

REVISIONS	
NAME	DATE

ILLINOIS DEPARTMENT OF TRANSPORTATION

SCALE: VERT. / HORIZ. / DATE

DRAWN BY / CHECKED BY

STAGING DETAILS

PLOT DATE = Thu, Dec 06, 2007 09:29:03 AM
 FILE NAME = c:\projects\64d53\111pm\staging\staging.dgn
 PLOT SCALE = 24.0000 / IN.
 USER NAME = hennicke

F.A.U. RTE.	SECTION	COUNTY	TOTAL SHEETS	SHEET NO.
5564	111PM	WHITESIDE	16	6
STA.		TO STA.		
FED. ROAD DIST. NO.		ILLINOIS	FED. AID PROJECT	

SCHEDULE OF QUANTITIES

40600990 TEMPORARY RAMP

SQ YD	LOCATION						
20	11	+	45.0	-	11	+	55
20	14	+	38.0	-	14	+	48
20	15	+	52.0	-	15	+	62
20	20	+	55.0	-	20	+	65
15	190	+	54.0	-	190	+	64
20	196	+	70.0	-	196	+	80
20	186	+	1.0	-	186	+	11
15	189	+	55.0	-	189	+	65
150	TOTAL						

N LEG IL 40
N LEG IL 40
S LEG IL 40
S LEG IL 40
E LEG US 30
E LEG US 30
W LEG US 30
W LEG US 30

40603340 HOT-MIX ASPHALT SURFACE COURSE, MIX "D", NTO

TON	LOCATION						
51	11	+	45.0	-	14	+	48
87	15	+	52.0	-	20	+	65
98	190	+	54.0	-	196	+	80
56	186	+	1.0	-	189	+	65
292	TOTAL						

N LEG IL 40
S LEG IL 40
E LEG US 30
W LEG US 30

44000155 HOT-MIX ASPHALT SURFACE REMOVAL, 1 1/2"

SQ YD	LOCATION						
606	11	+	45.0	-	14	+	48
1026	15	+	52.0	-	20	+	65
1165	190	+	54.0	-	196	+	80
661	186	+	1.0	-	189	+	65
3458	TOTAL						

N LEG IL 40
S LEG IL 40
E LEG US 30
W LEG US 30

85700505 FULL-ACTUATED CONTROLLER IN EXISTING CABINET, SPECIAL

EACH	LOCATION						
1	15	+	40.0		RT		NW Corner of S leg IL 40
1	TOTAL						

87301515 ELECTRIC CABLE IN CONDUIT, LEAD-IN, No. 18, 3PR

FOOT	LOCATION						
201	14	+	20.0	-	15	+	40 N IL 40
95	189	+	33.0	-	15	+	40 W IL 30
86	15	+	80.0	-	15	+	40 S IL 40
235	191	+	2.0	-	15	+	40 E IL 30
617	TOTAL						

88600400 DETECTOR LOOP, SPECIAL

FOOT	LOCATION						
121	13	+	88.0	-	14	+	38 N IL 40
121.5	189	+	3.0	-	189	+	53 W IL 30
129.5	15	+	69.0	-	16	+	19 S IL 40
137	190	+	66.0	-	191	+	16 E IL 30
509	TOTAL						

X0962500 REMOVE EXISTING TRAFFIC SIGNAL EQUIPMENT

L SUM	LOCATION						
1	15	+	40.0		RT		NW Corner of S leg IL 40
1	TOTAL						

X8850106 INDUCTIVE LOOP DETECTOR RACK MOUNT

EACH	LOCATION						
1	15	+	40.0		RT		NW Corner of S leg IL 40
1	15	+	40.0		RT		NW Corner of S leg IL 40
1	15	+	40.0		RT		NW Corner of S leg IL 40
1	15	+	40.0		RT		NW Corner of S leg IL 40
4	TOTAL						

PLOT DATE = Thu, Dec 06 07:35:44 2007
FILE NAME = c:\pwork\120709\120709.dgn
PLOT SCALE = 50.0000 / IN.
USER NAME = hmsorkh

PAVEMENT MARKING SCHEDULE

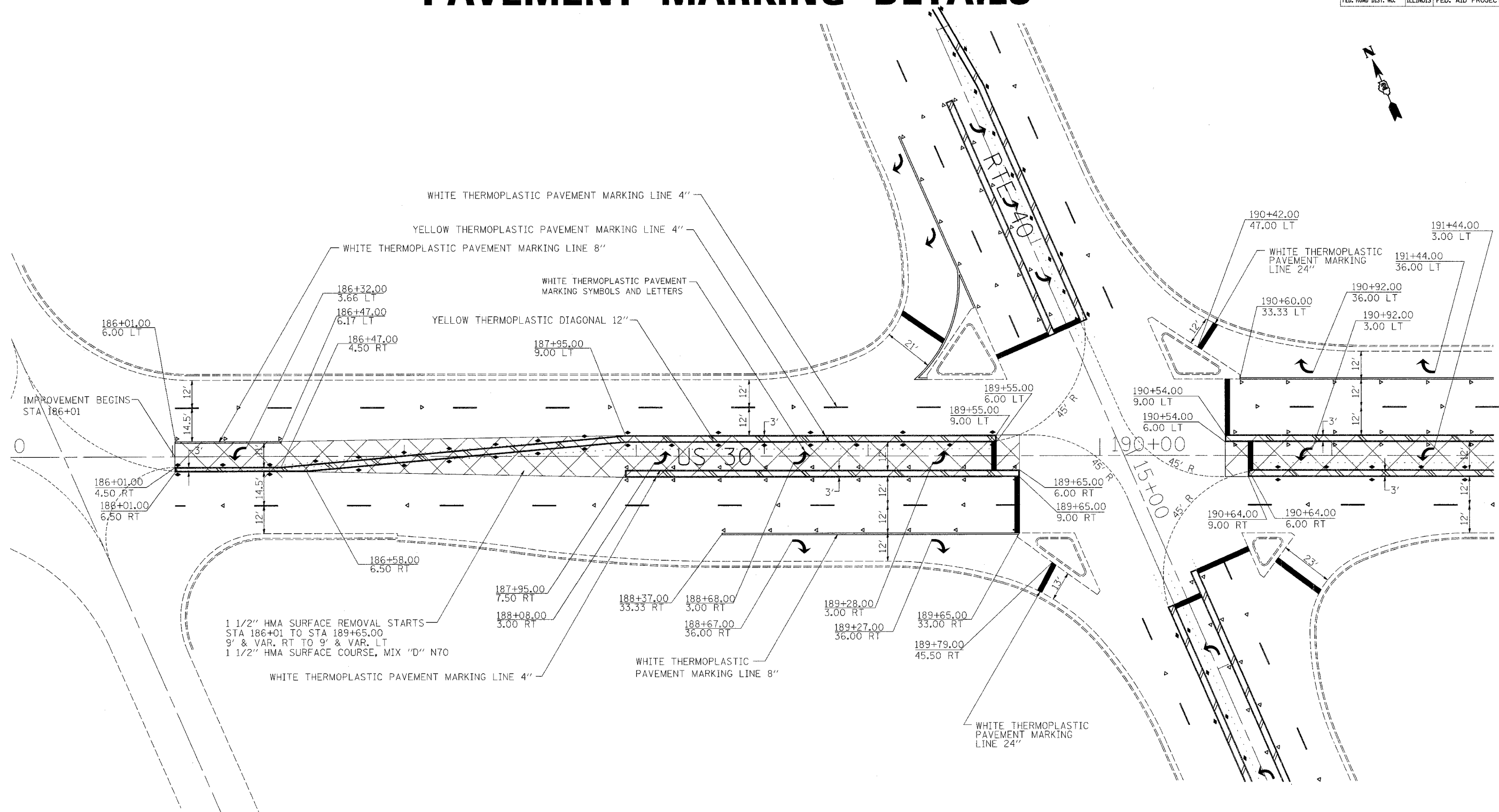
F.A.U. RTE.	SECTION	COUNTY	TOTAL SHEETS	SHEET NO.
5564	111PM	CARROLL	16	7
STA.		TO STA.		
FED. ROAD DIST. NO.		ILLINOIS FED. AID PROJECT		

LOCATION	LT-RT	REMARKS	LENGTH (FT)	78000200	78000200	78000500	78000600	78000600	78000650	70300100	70301000	78300100	78000100	78100100	78300200					
				THERMOPLASTIC PVT. MARKING LINE - 4" (YELLOW) (FT)	THERMOPLASTIC PVT. MARKING LINE-4" (WHITE) (FT)	THERMOPLASTIC PVT. MARKING LINE - 8" (WHITE) (FT)	THERMOPLASTIC PVT. MARKING LINE - 12" (YELLOW) (FT)	THERMOPLASTIC PVT. MARKING LINE - 12" (WHITE) (FT)	THERMOPLASTIC PVT. MARKING LINE - 24" (FT)	SHORT-TERM PAVEMENT MARKING (FT)	WORK ZONE PAVEMENT MARKING REMOVAL (SQ FT)	PAVEMENT MARKING REMOVAL (SQ FT)	THERMOPLASTIC PVT. MARKING LETTERS & SYMBOLS (SQ FT)	RAISED REFLECTIVE PAVEMENT MARKERS (EACH)	RAISED REFLECTIVE PAVEMENT MARKER REMOVAL (EACH)					
N LEG IL 40																				
11 + 45.0 to 14 + 38.0	NB CL	WHITE CL DASHES				80				44		15	27		4					
11 + 45.0 to 14 + 38.0	SB CL	WHITE CL DASHES				80				44		15	27		4					
11 + 77.0 to 0 + 00	LT	TURN ARROW								20		7		15.6						
11 + 45.0 to 14 + 40.0		YELLOW	295	596						80		27			28					
11 + 45.0 to 14 + 40.0		YELLOW DIAGONAL	295				64													
11 + 45.0 to 11 + 95.0		WHITE DIAGONAL							13											
11 + 45.0 to 11 + 95.0		WHITE	50			106				16		5			4					
13 + 30.0 to 14 + 40.0		WHITE	110			226				40		13								
13 + 30.0 to 14 + 40.0		WHITE DIAGONAL								26					12					
13 + 35.0 to 14 + 16.0		WHITE TURN LANE	81				81			40		13	104		5					
13 + 98.0 to 14 + 33.0		WHITE ISLAND	57			57														
14 + 40.0 to 0 + 00		STOP BAR							24	24		24	56							
14 + 40.0 to 0 + 00		STOP BAR							12	12		12	56							
14 + 24.0 to 0 + 00		STOP BAR							21	21		21	42							
13 + 42.0 to 0 + 00	LT	TURN ARROW								20		7		15.6						
13 + 42.0 to 0 + 00	RT	TURN ARROW								20		7	15.6	15.6						
13 + 77.0 to 0 + 00	LT	TURN ARROW								20		7		15.6						
13 + 77.0 to 0 + 00	RT	TURN ARROW								20		7	15.6	15.6						
14 + 12.0 to 0 + 00	LT	TURN ARROW								20		7		15.6						
S LEG IL 40																				
15 + 57.0 to 0 + 00		STOP BAR								12	12	12								
15 + 67.0 to 0 + 00		STOP BAR								24	24	24	48							
15 + 67.0 to 0 + 00		STOP BAR								23	23	23	50							
15 + 57.0 to 17 + 82.0		WHITE	225		456					70		23			26					
15 + 57.0 to 17 + 82.0		WHITE DIAGONAL							50											
15 + 67.0 to 20 + 65.0		YELLOW	498	1004						100		33			45					
15 + 67.0 to 20 + 65.0		YELLOW DIAGONAL					109								77					
15 + 67.0 to 20 + 65.0	NB CL	WHITE CL DASHES				130				40		13	43.3		7					
15 + 67.0 to 20 + 65.0	SB CL	WHITE CL DASHES				130				40		13	43.3		7					
19 + 17.0 to 20 + 65.0		WHITE	148		302					40		13			16					
19 + 17.0 to 20 + 65.0		WHITE DIAGONAL								33										
15 + 95.0 to 0 + 00	LT	TURN ARROW								20		7		15.6						
16 + 53.0 to 0 + 00	LT	TURN ARROW								20		7		15.6						
17 + 11.0 to 0 + 00	LT	TURN ARROW								20		7		15.6						
17 + 70.0 to 0 + 00	LT	TURN ARROW								20		7		15.6						
19 + 29.0 to 0 + 00	LT	TURN ARROW								20		7		15.6						
19 + 83.0 to 0 + 00	LT	TURN ARROW								20		7		15.6						
20 + 37.0 to 0 + 00	LT	TURN ARROW								20		7		15.6						
E LEG US 30																				
190 + 42.0 to 0 + 00		STOP BAR							12.0	12.0		12	36.0							
190 + 54.0 to 0 + 00		STOP BAR							24.0	24.0		24	48.0							
190 + 64.0 to 0 + 00		STOP BAR							12.0	12.0		12								
190 + 54.0 to 192 + 9.0		WHITE	155		316					40		13	113.3		18					
190 + 54.0 to 192 + 9.0		WHITE DIAGONAL								23					14					
190 + 60.0 to 191 + 96.0		WHITE TURN LANE	136			136				40		27	103.3		9					
190 + 64.0 to 192 + 44.0		YELLOW	180	363						60		20			41					
192 + 41.0 to 196 + 43.0		DOUBLE YELLOW	402	1612						160		53								
196 + 41.0 to 196 + 80.0		YELLOW	39	80						20		7								
190 + 64.0 to 196 + 80.0		YELLOW DIAGONAL					280													
190 + 64.0 to 196 + 80.0	EB CL	WHITE CL DASHES				160				40		13	30.0		5					
190 + 64.0 to 196 + 80.0	WB CL	WHITE CL DASHES				160				40		13	36.7		9					
190 + 92.0 to 0 + 00	RT	TURN ARROW								20		7		15.6						
190 + 92.0 to 0 + 00	LT	TURN ARROW								20		7	15.6	15.6						
191 + 44.0 to 0 + 00	RT	TURN ARROW								20		7		15.6						
191 + 44.0 to 0 + 00	LT	TURN ARROW								20		7		15.6						
191 + 97.0 to 0 + 00	RT	TURN ARROW								20		7		15.6						
191 + 97.0 to 0 + 00	LT	TURN ARROW								20		7	15.6	15.6						
W LEG US 30																				
186 + 1.0 to 186 + 47.0	LT	WHITE TURN LANE	46			46				46		15			3					
186 + 32.0 to 0 + 00	LT	WHITE ARROW								20		7		15.6						
186 + 1.0 to 189 + 55.0		YELLOW	354	714						50		17			32					
186 + 1.0 to 189 + 55.0		YELLOW DIAGONAL					54								42					
186 + 1.0 to 189 + 65.0	EB CL	WHITE CL DASHES				100				30		10	33.3		5					
186 + 1.0 to 189 + 32.0	WB CL	WHITE CL DASHES				90				30		10	30.0		4					
187 + 95.0 to 189 + 65.0		WHITE	170		346					50		17	105.3		18					
187 + 95.0 to 189 + 65.0		WHITE DIAGONAL	170							27										
188 + 37.0 to 189 + 65.0	RT	WHITE TURN LANE	128			128				30		10	121.3		7					
188 + 8.0 to 0 + 00	LT	WHITE ARROW								20		7		15.6						
188 + 68.0 to 0 + 00	LT	WHITE ARROW								20		7		15.6						
188 + 67.0 to 0 + 00	RT	WHITE ARROW								20		7	15.6	15.6						
189 + 28.0 to 0 + 00	LT	WHITE ARROW								20		7		15.6						
189 + 27.0 to 0 + 00	RT	WHITE ARROW								20		7	15.6	15.6						
189 + 55.0 to 0 + 00		STOP BAR							12	12		12								
189 + 65.0 to 0 + 00		STOP BAR							24	24		24	48							
189 + 79.0 to 0 + 00		STOP BAR							14	14		14	32.0							
			Subtotal			4,369		2,682		507		172								
			TOTAL			7,051		448		679		172		214	1,904	791	1,327	390	309	170

PLOT DATE = Thu Dec 06 07:35:44 2007
 FILE NAME = c:\pvc\mca\2007\187\187.dgn
 PLOT SCALE = 66.0000 / 1 IN.
 USER NAME = hemanke

F.A.U. RTE.	SECTION	COUNTY	TOTAL SHEETS	SHEET NO.
5564	111PM	WHITESIDE	16	8
STA.		TO STA.		
FED. ROAD DIST. NO.		ILLINOIS FED. AID PROJECT		

PAVEMENT MARKING DETAILS



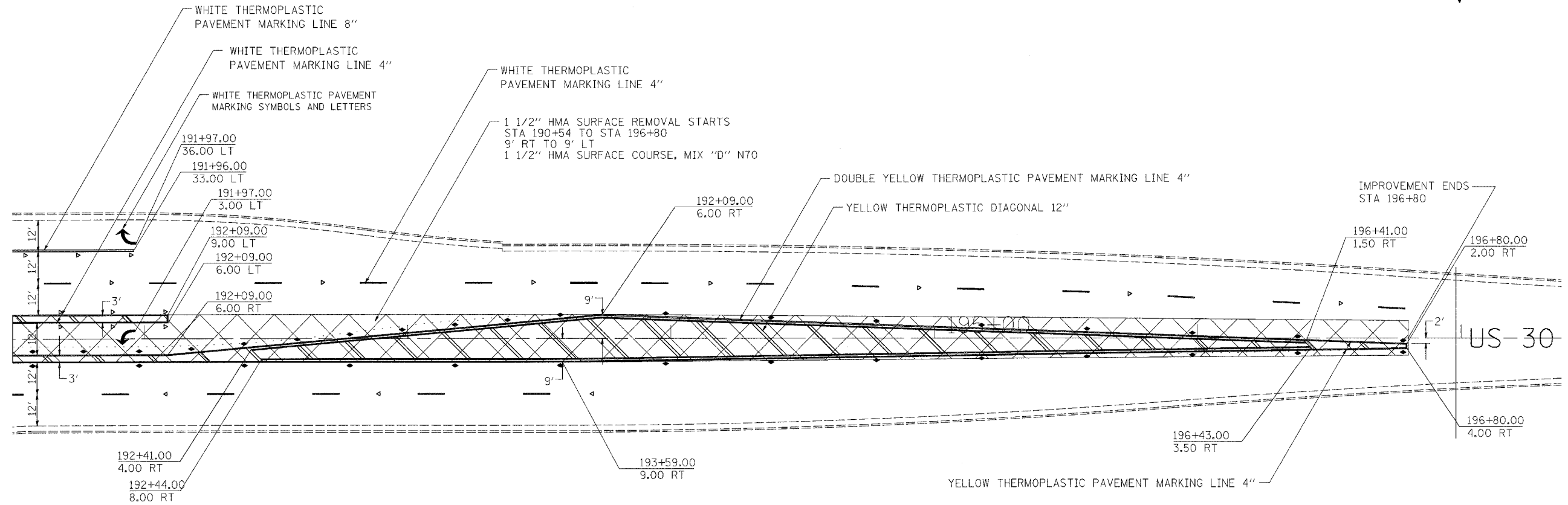
- ◁ ONE-WAY CRYSTAL MARKER
- ▲ ONE-WAY AMBER MARKER
- ◆ TWO-WAY AMBER MARKER

REVISIONS		ILLINOIS DEPARTMENT OF TRANSPORTATION
NAME	DATE	
		SCALE: VERT. HORIZ. DATE DRAWN BY CHECKED BY

PLOT DATE = Thu Dec 06 07:54:45 2007
 FILE NAME = c:\work\5564\2007\111PM\64D53\111PM_0815107.dwg
 PLOT SCALE = 20.00000 / IN.
 USER NAME = hennicke

PAVEMENT MARKING DETAILS

CONTRACT NO. 64053				
F.A.U. RTE.	SECTION	COUNTY	TOTAL SHEETS	SHEET NO.
5564	111PM	WHITESIDE	16	9
STA.		TO STA.		
FED. ROAD DIST. NO.		ILLINOIS FED. AID PROJECT		



- ◁ ONE-WAY CRYSTAL MARKER
- ◄ ONE-WAY AMBER MARKER
- ◈ TWO-WAY AMBER MARKER

REVISIONS	
NAME	DATE

ILLINOIS DEPARTMENT OF TRANSPORTATION

SCALE: VERT. / HORIZ.

DATE

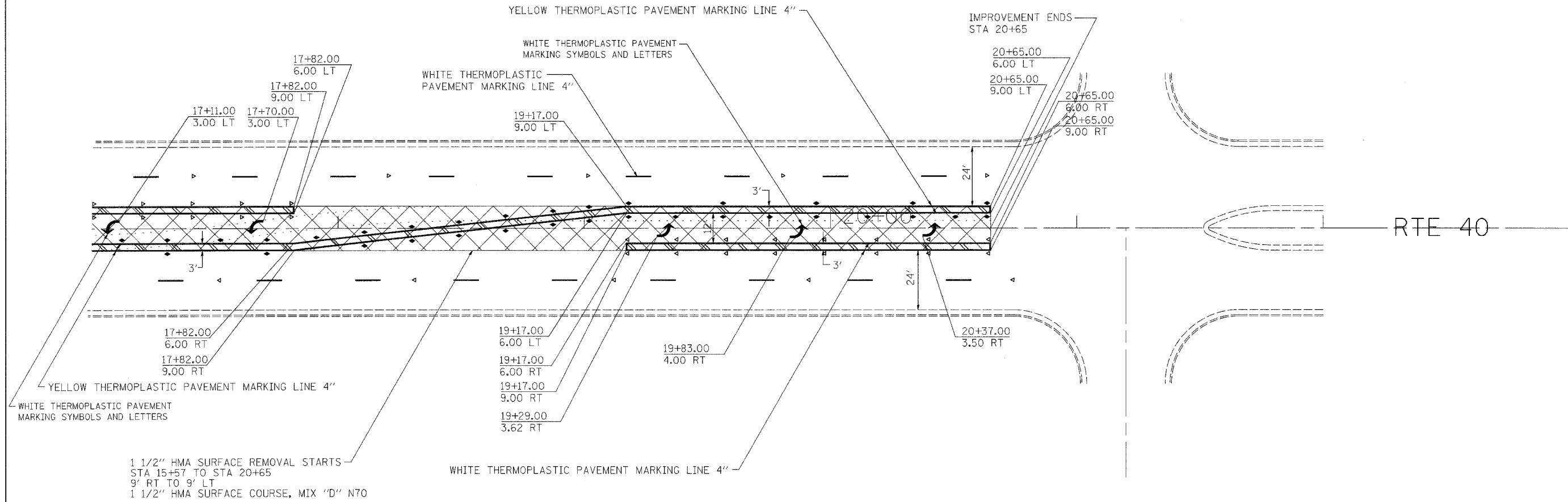
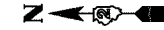
DRAWN BY

CHECKED BY

PAVEMENT MARKING DETAILS

PAVEMENT MARKING DETAILS

CONTRACT NO. 64D53				
F.A.U. RTE.	SECTION	COUNTY	TOTAL SHEETS	SHEET NO.
5564	111PM	WHITESIDE	16	11
STA.		TO STA.		
FED. ROAD DIST. NO.		ILLINOIS	FED. AID PROJECT	



RTE 40

PLOT DATE = Thu Dec 06 07:54:43 2007
 FILE NAME = c:\pco\secta\20091907\1891907\pml.dgn
 PLOT SCALE = 20.0000' / IN.
 USER NAME = hemsorka

◁	ONE-WAY CRYSTAL MARKER
◀	ONE-WAY AMBER MARKER
◆	TWO-WAY AMBER MARKER

REVISIONS	
NAME	DATE

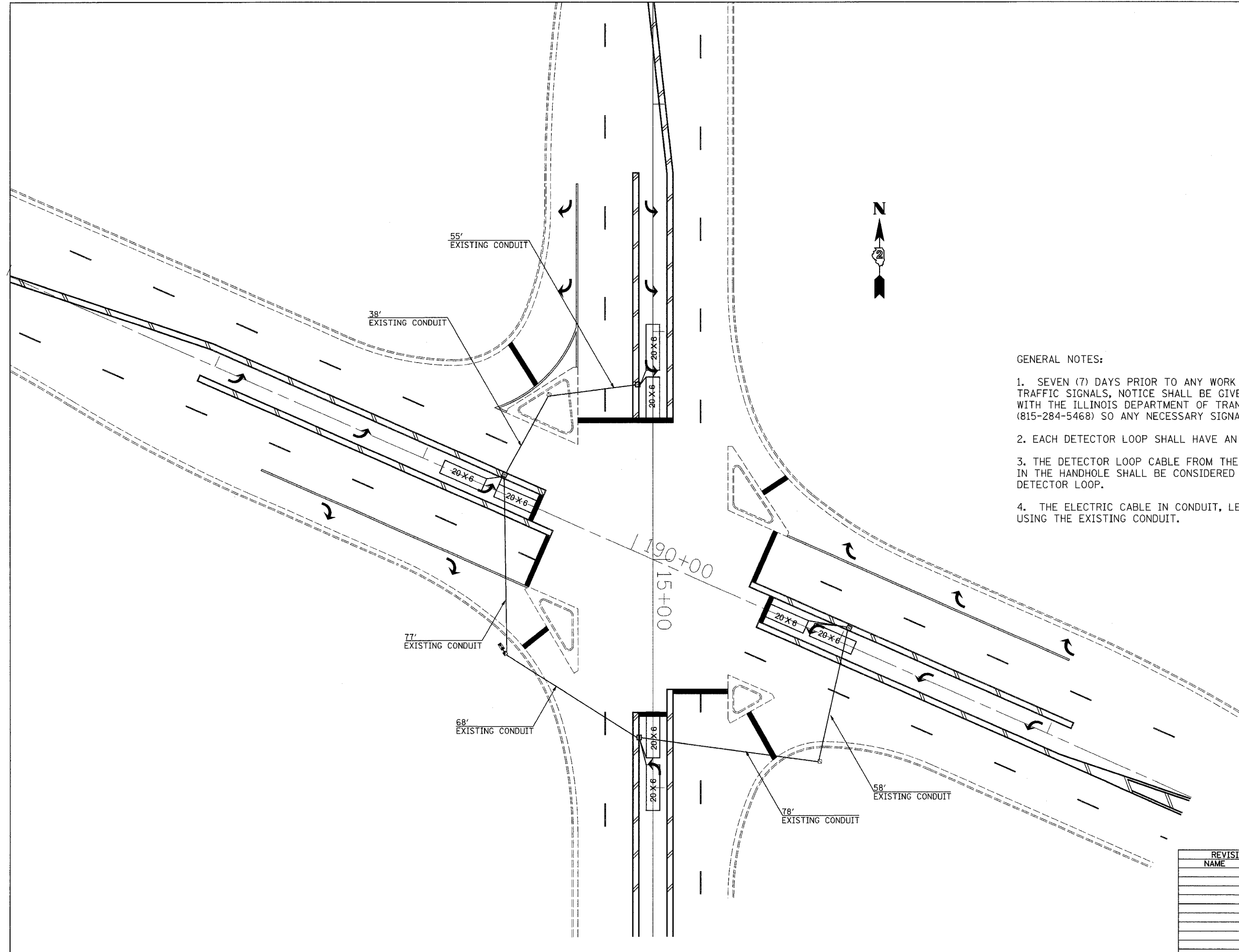
ILLINOIS DEPARTMENT OF TRANSPORTATION

SCALE: VERT.
HORIZ.
DATE

DRAWN BY
CHECKED BY

PAVEMENT MARKING DETAILS

F.A.U. RTE.	SECTION	COUNTY	TOTAL SHEETS	SHEET NO.
5564	111PM	WHITESIDE	16	12
STA.		TO STA.		
FED. ROAD DIST. NO.	ILLINOIS	FED. AID PROJECT		



GENERAL NOTES:

1. SEVEN (7) DAYS PRIOR TO ANY WORK THAT MAY AFFECT THE OPERATION OF THE TRAFFIC SIGNALS, NOTICE SHALL BE GIVEN TO SCOTT KULLERSTRAND WITH THE ILLINOIS DEPARTMENT OF TRANSPORTATION, REGION 2/DISTRICT 2, (815-284-5468) SO ANY NECESSARY SIGNAL TIMING ADJUSTMENTS MAY BE MADE.
2. EACH DETECTOR LOOP SHALL HAVE AN INDIVIDUAL CONDUIT STUB.
3. THE DETECTOR LOOP CABLE FROM THE END OF THE SAW CUT TO THE SPLICE IN THE HANDHOLE SHALL BE CONSIDERED INCIDENTAL TO THE COST OF THE DETECTOR LOOP.
4. THE ELECTRIC CABLE IN CONDUIT, LEAD-IN, No., 18, 3 PR, SHALL BE INSTALLED USING THE EXISTING CONDUIT.

PLOT DATE = Thu Dec 08 07:54:53 2007
 FILE NAME = c:\projects\6209987\6209987.dgn
 PLOT SCALE = 20,000% / IN.
 USER NAME = hemsorke

REVISIONS	
NAME	DATE

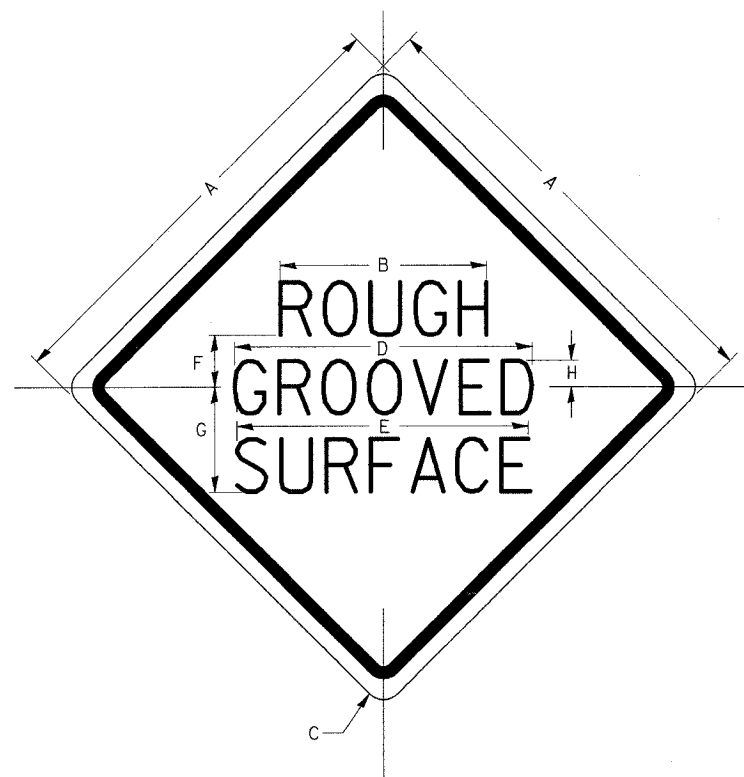
ILLINOIS DEPARTMENT OF TRANSPORTATION

SCALE: VERT. DRAWN BY
 HORIZ. CHECKED BY
 DATE

F.A.U. RTE.	SECTION	COUNTY	TOTAL SHEETS	SHEET NO.
5564	111PM	WHITESIDE	16	14
STA.		TO STA.		
FED. ROAD DIST. NO.		ILLINOIS FED. AID PROJECT		

ROUGH GROOVED SURFACE SIGN

ILLINOIS STANDARD W8-I107
SIGN PANEL TYPE 1



COLOR: LEGEND AND BORDER - BLACK NON-REFLECTIVE
BACKGROUND - ORANGE REFLECTORIZED

SIGN SIZE	DIMENSIONS							
	A	B	C	D	E	F	G	H
1200x1200 (48x48)	1200 (48.0)	600 (24.1)	75 (3.0)	850 (34.0)	825 (33.0)	150 (6.0)	325 (13.0)	88 (3.5)

SIGN SIZE	SERIES LINES			MARGIN	BORDER	BLANK STD.
	1	2	3			
1200x1200 (48x48)	7C	7C	7C	20 (0.8)	30 (1.2)	B4-48D

ALL DIMENSIONS IN INCHES.

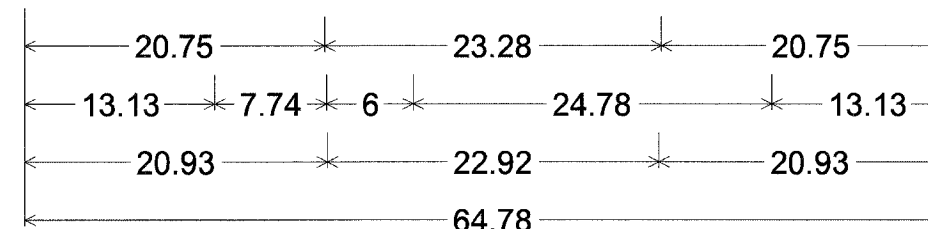
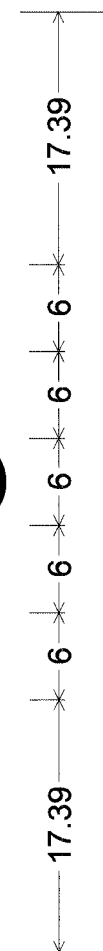
GENERAL NOTES

SIGN PANELS AND FACE MATERIALS SHALL BE ACCORDING TO SECTION 720 OF THE STANDARD SPECIFICATIONS

METAL POSTS SHALL BE IN ACCORDANCE WITH STD. 720011.

ALL MOUNTING HARDWARE SHALL BE ALUMINUM, STAINLESS STEEL, ZINC OR CADMIUM PLATED STEEL AND SHALL BE INCIDENTAL TO THE COST OF THE INSTALLATION.

ALL DIMENSIONS ARE IN MILLIMETERS (INCHES) UNLESS OTHERWISE NOTED.



48.00" across sides 3.75" Radius, 1.00" Border, 0.63" Indent, Black on Orange;

[STAY] E Mod 2K; [IN YOUR] E Mod 2K;

[LANE] E Mod 2K;

Table of letter and object lefts.

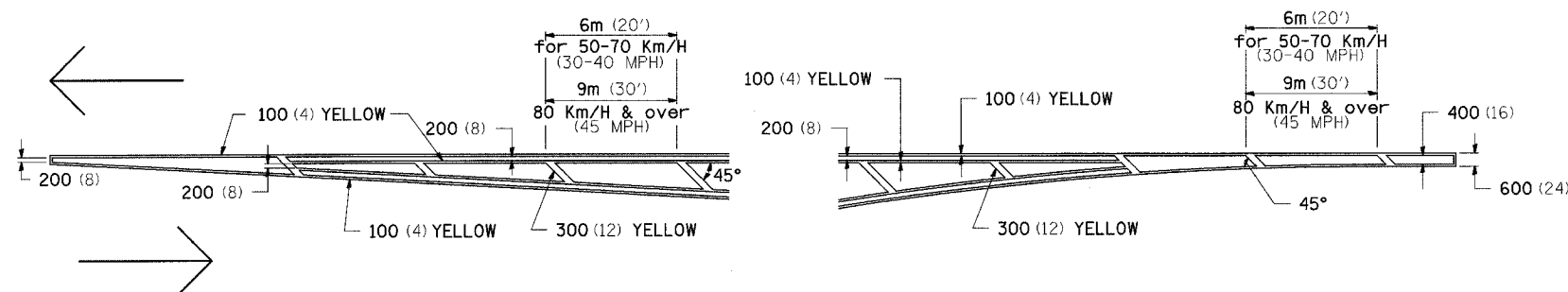
S 20.75	T 26.51	A 31.43	Y 37.97
I 13.13	N 16.01	Y 26.87	O 33.77
U 40.25	R 46.79	L 20.93	A 25.73
N 32.87	E 39.41		

PLOT DATE = Thu Dec 06 09:30:04 2007
 FILE NAME = c:\pwork\64053\14\1485187.dgn
 PLOT SCALE = 50.0000 / IN
 REFERENCE = #REF#

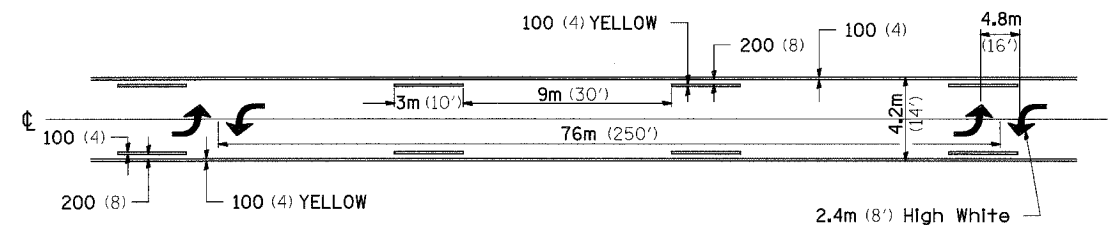
F.A.U. RTE.	SECTION	COUNTY	TOTAL SHEETS	SHEET NO.
5564	111PM	WHITESIDE	16	15
STA.		TO STA.		
FED. ROAD DIST. NO.		ILLINOIS FED. AID PROJECT		

TYPICAL PAVEMENT MARKINGS

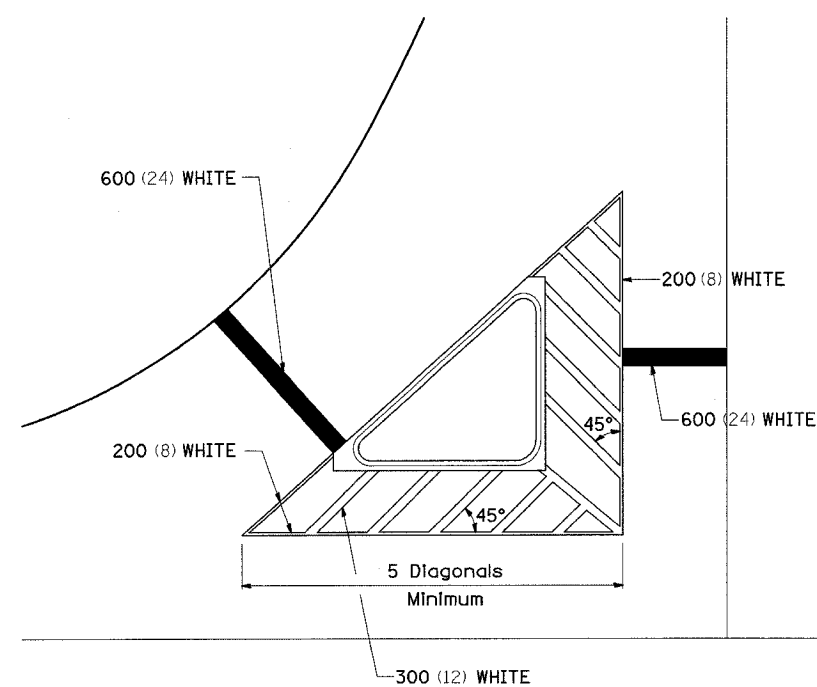
TYPICAL PAVEMENT MARKING FOR FLUSH MEDIAN AT LEFT TURN LANE



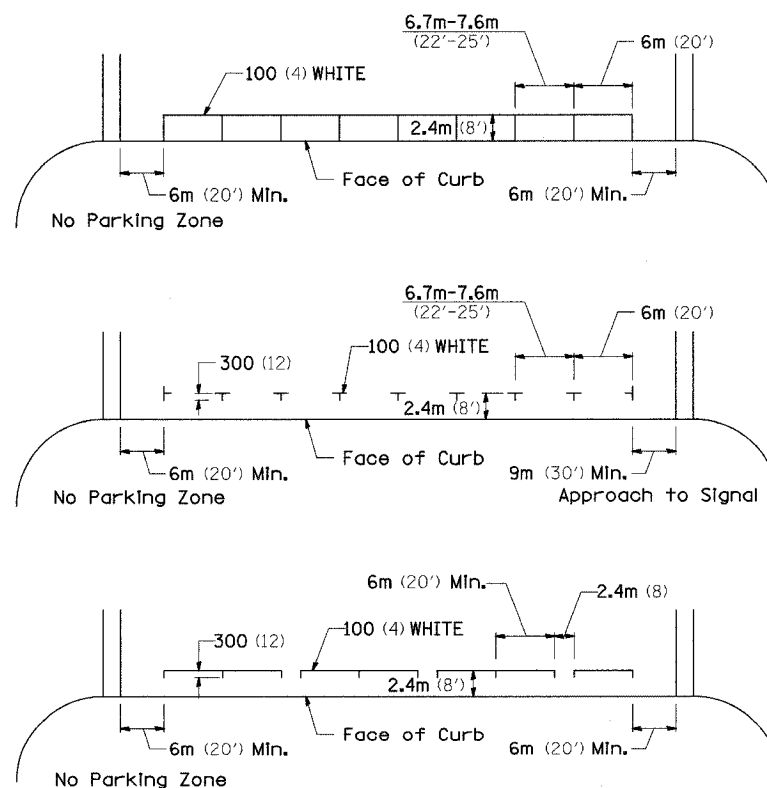
MEDIAN PAVEMENT MARKING



TYPICAL ISLAND OFFSET SHOULDER WIDTH



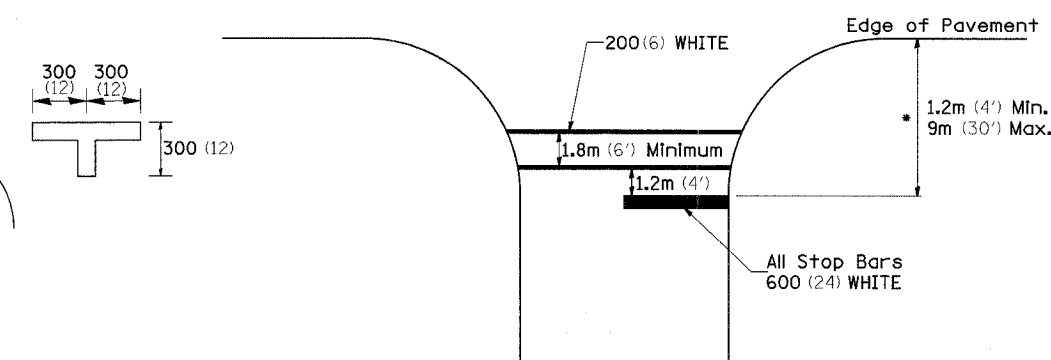
TYPICAL PARKING SPACING



•• ALL DIMENSIONS ARE IN MILLIMETERS (INCHES) UNLESS OTHERWISE NOTED.

STANDARD CROSSWALK MARKING

See Schedules for Locations

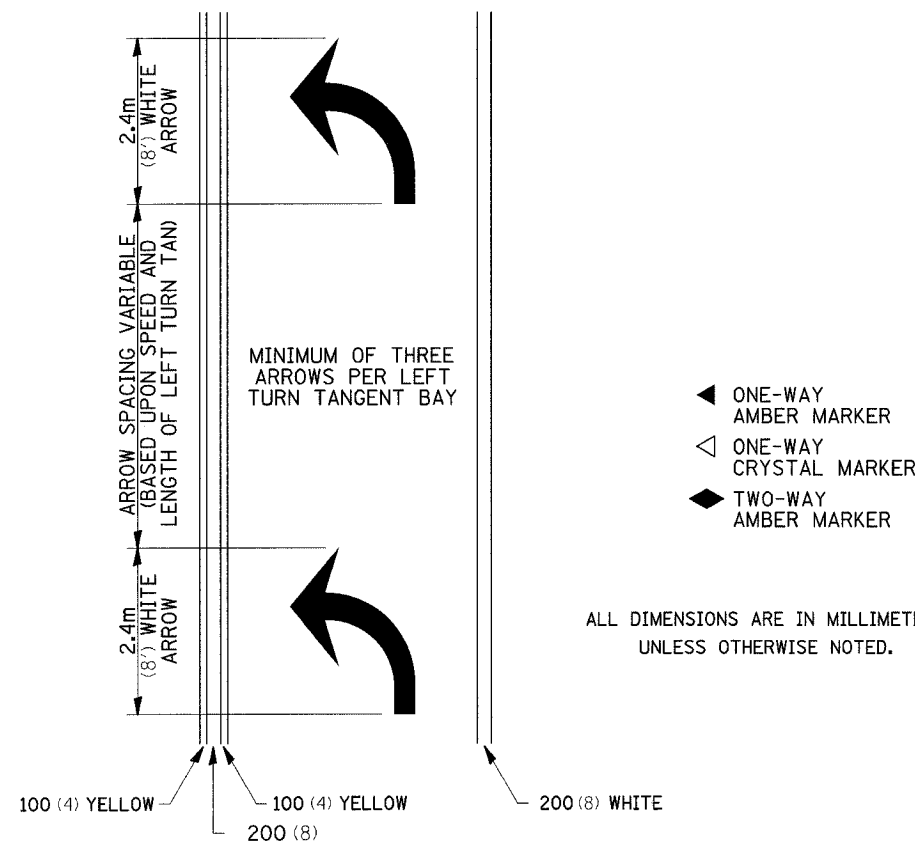


• Distance to the nearest edge of the intersecting roadway in the absence of a marked crosswalk.

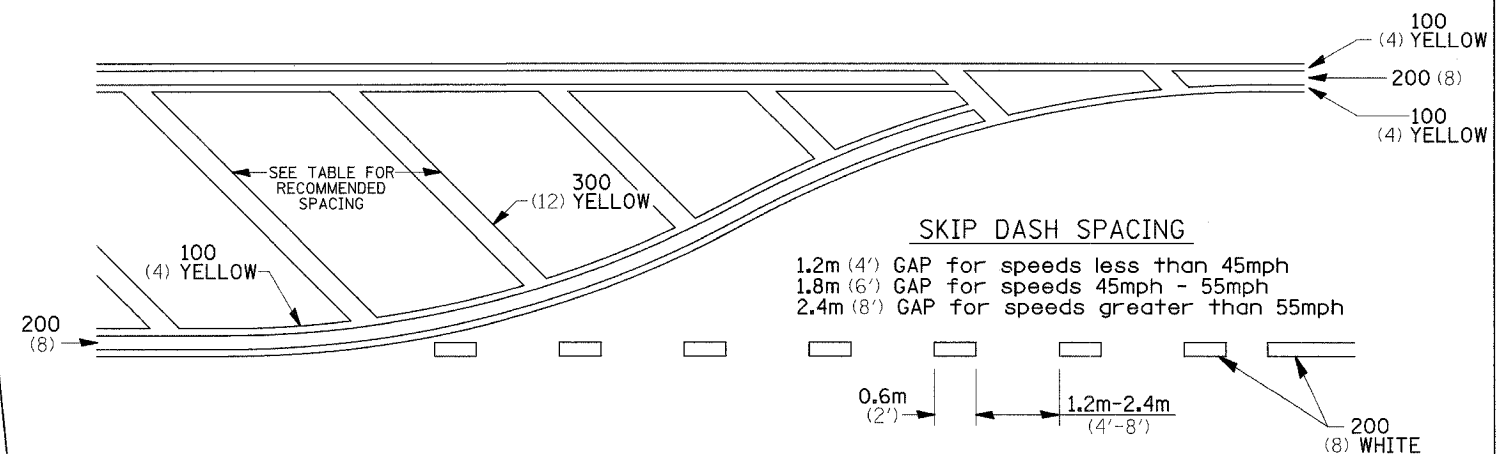
PLOT DATE = Thu, Dec 06 07:57:34, 2007
 FILE NAME = c:\pav\sect5\2009197\2009197.dgn
 PLOT SCALE = 50.0000 / 1.00
 REFERENCE = #REF#

TYPICAL PAVEMENT MARKINGS

ARROW LAYOUT



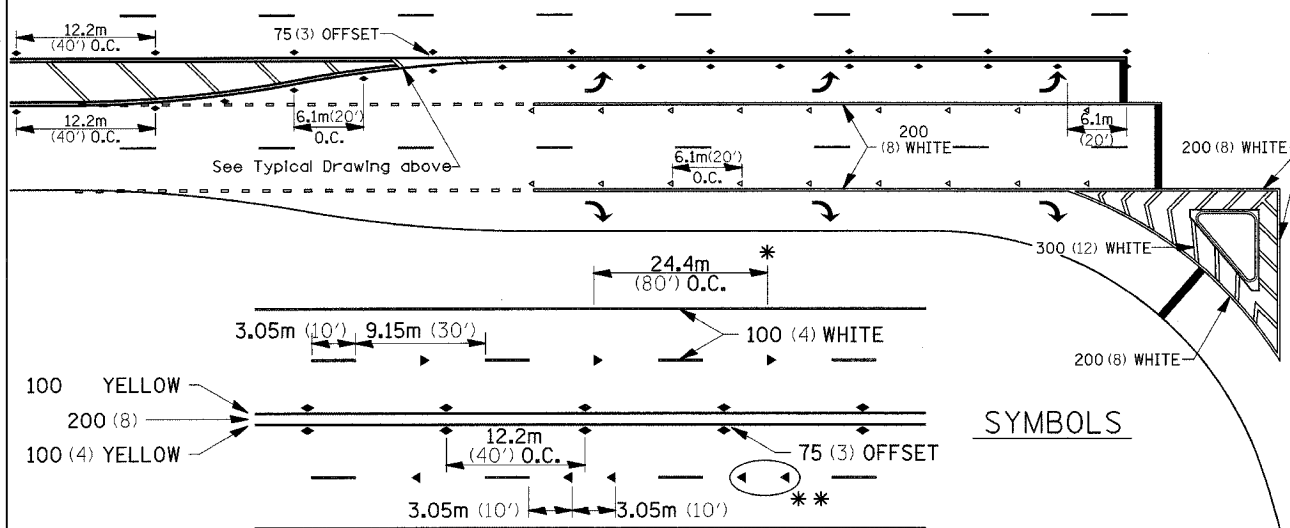
TYPICAL PAVEMENT MARKING FOR FLUSH MEDIAN



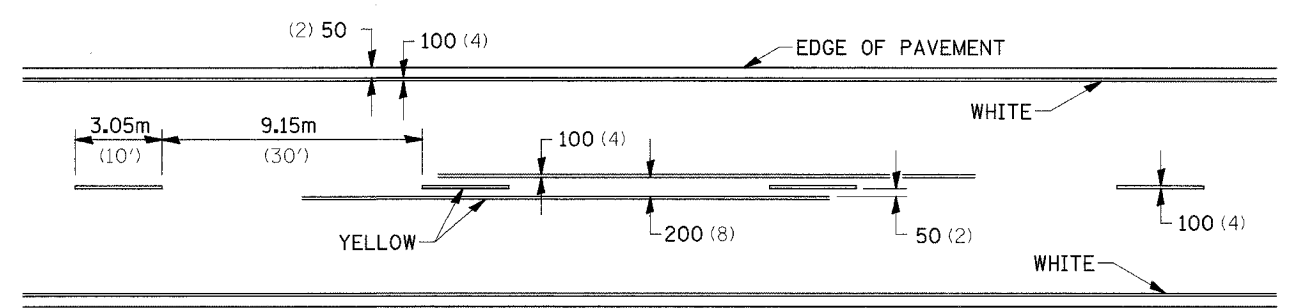
RECOMMENDED SPACING BETWEEN DIAGONALS (IN FEET)

Speed Limit Range	Continuous Median Area	Intersection Channelization	Objects (Islands)
less than 50Km/H (30MPH)	15.3m (50')	4.53m (15')	3.05m (10')
50-60Km/H (30-40MPH)	22.9m (75')	6.1m (20')	4.53m (15')
70Km/H (45MPH) & over	22.9m (75')	9.05m (30')	6.1m (20')

NOTE: If the spacing recommended in the Table does not permit at least five diagonal lines in the area being marked, the spacing from the next lowest speed range should be used. The recommended spacing is measured parallel to the pavement center line.



TYPICAL PAVEMENT MARKING FOR TWO LANE SECTION - NO PASSING ZONES



SYMBOLS

- ▲ ONE-WAY AMBER MARKER
- ◊ ONE-WAY CRYSTAL MARKER
- TWO-WAY AMBER MARKER

- * REDUCE TO 12.2m (40') O.C. ON CURVES WHERE ADVISORY SPEEDS ARE 15Km/H (10MPH) LOWER THAN POSTED SPEEDS.
- ** USE DOUBLE MARKERS WHEN ADT ≥ 25,000

MULTI-LANE / UNDIVIDED

PLOT DATE = Thu Dec 06 07:52:54 2007
 FILE NAME = C:\p00000000\64D53\64D53.dgn
 PLOT SCALE = 50.000000 / 1.00
 REFERENCE = *REF*