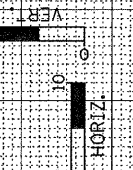
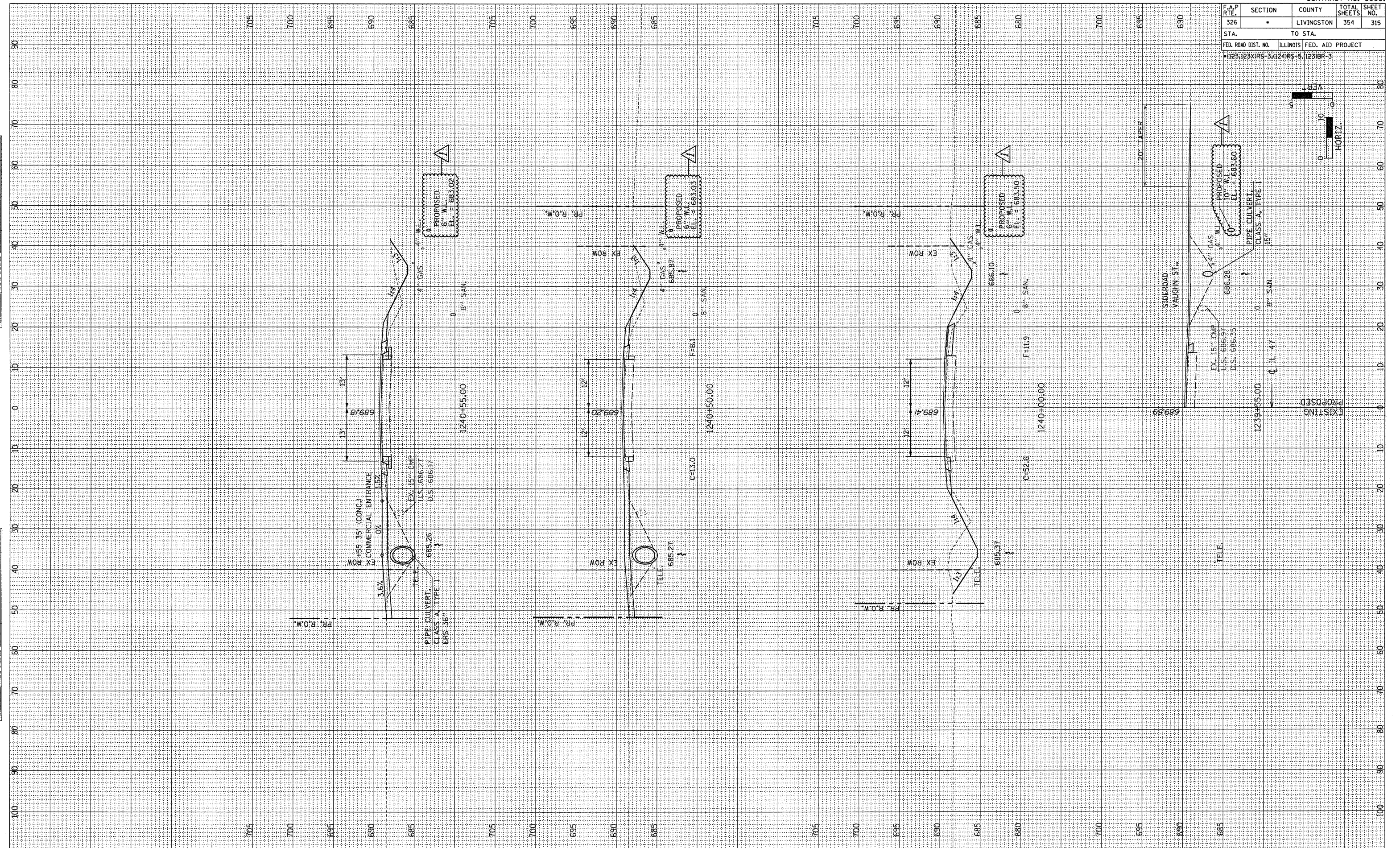


F.A.P. RTE.	SECTION	COUNTY	TOTAL SHEETS	SHEET NO.
326		LIVINGSTON	354	315
STA.	TO STA.			
FED. ROAD DIST. NO.	ILLINOIS	FED. AID PROJECT		
1123123X1RS-3,124RS-5,1231R-3				

DATE	BY
ORIGINAL SURVEY	SURVEYED
NOTE BOOK NO.	PLOTTED
	DATE
	AREAS CHECKED

DATE	BY
ORIGINAL SURVEY	SURVEYED
NOTE BOOK NO.	PLOTTED
	DATE
	AREAS CHECKED



REVISD TO INCLUDE PROPOSED WATER MAIN 2-14-08 MJ F.A.P. 326 (IL 47)