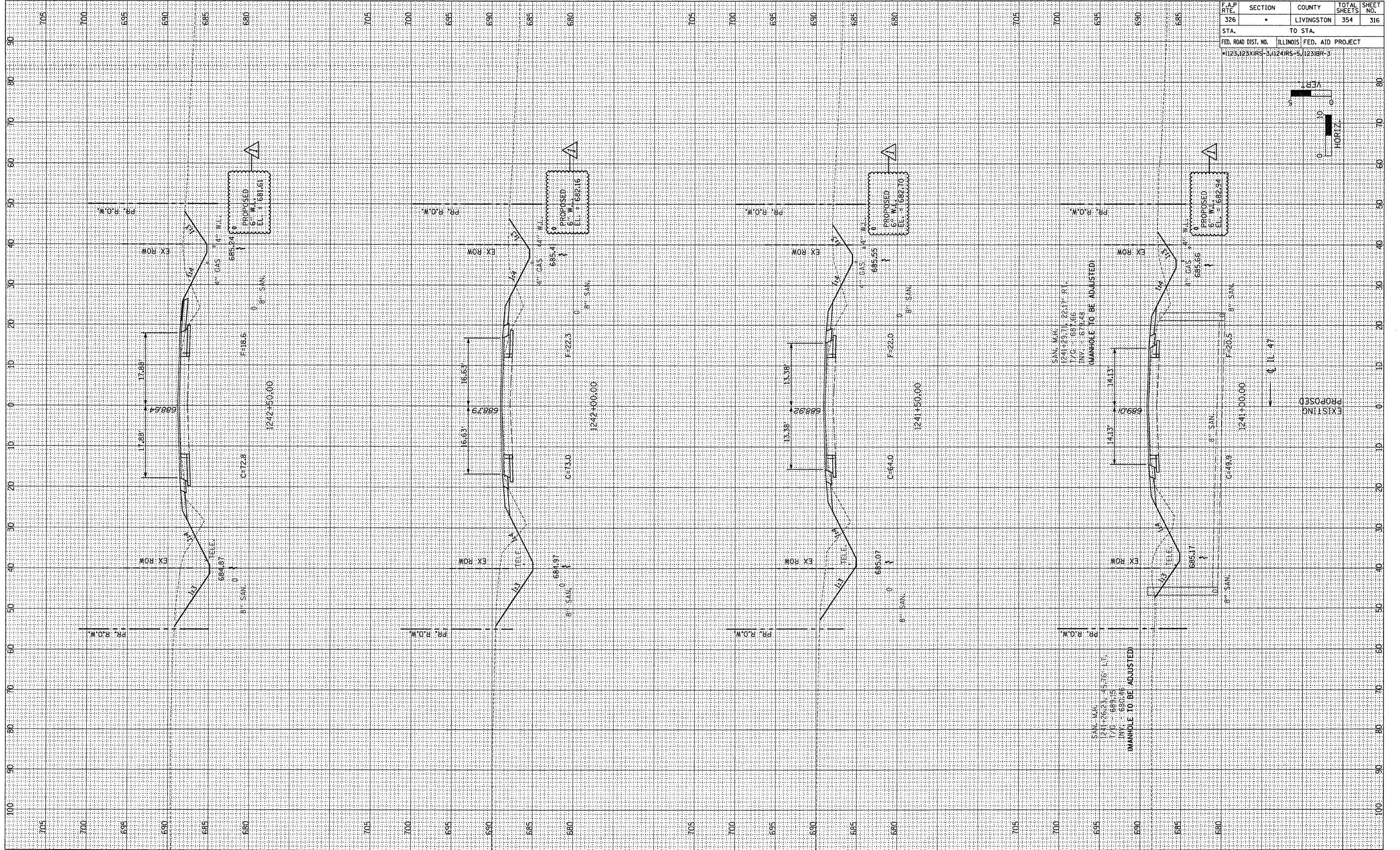


F.A.P. RTE. 326	SECTION	COUNTY LIVINGSTON	TOTAL SHEETS 354	SHEET NO. 316
STA.		TO STA.		
FED. ROAD DIST. NO. 1123,123XRS-3,1241RS-5,1231BR-3		ILLINOIS FED. AID PROJECT		

BY	DATE
SURVEYED PLOTTED	
TEMPLATE	
NO. AREAS CHECKED	

BY	DATE
SURVEYED PLOTTED	
TEMPLATE	
NO. AREAS CHECKED	



REVISD TO INCLUDE PROPOSED WATER MAIN 2-14-08 MJ F.A.P. 326 (IL 47)