



F.A.P. RTE.	SECTION	COUNTY	TOTAL SHEETS	SHEET NO.
326		LIVINGSTON		20
STA.		TO STA.		
FED. ROAD DIST. NO.		ILLINOIS FED. AID PROJECT		
*(123,123)RS-3, (124)RS-5, (123)BR-3				

**ITEM NO. 54001006 BOX CULVERT END SECTION, CULVERT NO. 6**

LOCATION	SIZE	EACH
LT. STA. 844+02.5	3' x 2'	1
TOTAL = 1		

**ITEM NO. 54001007 BOX CULVERT END SECTION, CULVERT NO. 7**

LOCATION	SIZE	EACH
LT. & RT. STA. 886+65	6' x 2'	2
TOTAL = 2		

**ITEM NO. 54001008 BOX CULVERT END SECTION, CULVERT NO. 8**

LOCATION	SIZE	EACH
LT. & RT. STA. 1008+02	3' x 2'	2
TOTAL = 2		

**ITEM NO. 54001009 BOX CULVERT END SECTION, CULVERT NO. 9**

LOCATION	SIZE	EACH
LT. & RT. STA. 1044+02	3' x 2'	2
TOTAL = 2		

**ITEM NO. 54001010 BOX CULVERT END SECTION, CULVERT NO. 10**

LOCATION	SIZE	EACH
LT. & RT. STA. 1061+37	3' x 2'	2
TOTAL = 2		

**ITEM NO. 54001011 BOX CULVERT END SECTION, CULVERT NO. 11**

LOCATION	SIZE	EACH
LT. & RT. STA. 1216+09	10' x 4'	2
TOTAL = 2		

**ITEM NO. 54001012 BOX CULVERT END SECTION, CULVERT NO. 12**

LOCATION	SIZE	EACH
LT. & RT. STA. 1227+71	7' x 2'	2
TOTAL = 2		

**ITEM NO. 54001013 BOX CULVERT END SECTION, CULVERT NO. 13**

LOCATION	SIZE	EACH
LT. & RT. STA. 1245+85	DBL. 6' x 2'	4
TOTAL = 4		

**ITEM NO. 54002020 EXPANSION BOLTS 3/4 INCH**

LOCATION	EACH
LT. STA. 810+98.5	14
RT. STA. 810+98.5	14
LT. STA. 828+30	14
RT. STA. 828+30	14
TOTAL = 56	

**ITEM NO. 54010302 PRECAST CONCRETE BOX CULVERT 3' x 2'**

\* (TEMPORARY - SEE STAGING PLANS)

CULVERT NO.	LOCATION	FOOT	INFO ONLY
①	☉ STA. 774+90	12	(6' LT. & 6' RT.)
②	☉ STA. 788+96	6	(RT.)
③	☉ STA. 810+98.5	22	(10' LT. & 12' RT.)
④	☉ STA. 828+30	14	(8' LT. & 6' RT.)
⑤	☉ STA. 844+02.5	4	(LT.)
⑥	☉ STA. 1008+02	8	(4' LT. & 4' RT.)
⑦	☉ STA. 1044+02	12	(6' LT. & 6' RT.)
⑧	☉ STA. 1061+37	10	(4' LT. & 6' RT.)
⑨	☉ STA. 1245+20	16	(8' LT. & 8' RT.)
TOTAL = 104			

**ITEM NO. 54020602 PRECAST CONCRETE BOX CULVERT 6' x 2' (M273)**

CULVERT NO.	LOCATION	FOOT
⑦	☉ STA. 886+65	54
⑬	☉ STA. 1245+85	136
TOTAL = 190		

**ITEM NO. 54020702 PRECAST CONCRETE BOX CULVERT 7' x 2' (M273)**

CULVERT NO.	LOCATION	FOOT
⑫	☉ STA. 1227+71	58
TOTAL = 58		

**ITEM NO. 54020804 PRECAST CONCRETE BOX CULVERT 8' x 4' (M273)**

CULVERT NO.	LOCATION	FOOT
⑤	☉ STA. 836+98	56
TOTAL = 56		

**ITEM NO. 54021004 PRECAST CONCRETE BOX CULVERT 10' x 4' (M273)**

CULVERT NO.	LOCATION	FOOT
⑪	☉ STA. 1216+09	58
TOTAL = 58		

**ITEM NO. 542A0220 PIPE CULVERTS, CLASS A, TYPE 1 15"**

LOCATION	FOOT
33' RT. STA. 1239+55	52
39' RT. STA. 1243+06	62
TOTAL = 114	

**ITEM NO. 542A0223 PIPE CULVERTS, CLASS A, TYPE 1 18"**

LOCATION	FOOT
40' LT. STA. 863+41	60
33' LT. STA. 916+32	74
33' RT. STA. 916+36	72
52' LT. STA. 1023+57	76
33' RT. STA. 1023+57	70
33' LT. STA. 1182+24	68
TOTAL = 420	

**ITEM NO. 542A0241 PIPE CULVERTS, CLASS A, TYPE 1 36"**

LOCATION	FOOT
41.5' RT. STA. 1129+36	56
48.5' RT. STA. 1129+36	56
TOTAL = 112	

**ITEM NO. 542A1069 PIPE CULVERTS, CLASS A, TYPE 2 24"**

LOCATION	FOOT
☉ STA. 863+00	90
LT. STA. 943+25 TO LT. STA. 945+00	176
RT. STA. 943+40 TO RT. STA. 945+25	184
LT. STA. 945+00 TO LT. STA. 948+55	354
RT. STA. 945+25 TO RT. STA. 948+55	328
TOTAL = 1132	

**ITEM NO. 542A1087 PIPE CULVERTS, CLASS A, TYPE 2 42"**

LOCATION	FOOT
☉ STA. 1083+04.5	62
TOTAL = 62	

**ITEM NO. 542A5473 PIPE CULVERTS, CLASS A, TYPE 1 EQUIVALENT ROUND-SIZE 18"**

LOCATION	FOOT
32' RT. STA. 863+41	68
33' LT. STA. 1129+36	68
TOTAL = 136	

**ITEM NO. 542A5479 PIPE CULVERTS, CLASS A, TYPE 1 EQUIVALENT ROUND-SIZE 24"**

LOCATION	FOOT
33' RT. STA. 1182+24	68
☉ STA. 1185+24	58
TOTAL = 126	

**ITEM NO. 542A5491 PIPE CULVERTS, CLASS A, TYPE 1 EQUIVALENT ROUND-SIZE 36"**

LOCATION	FOOT	INFO ONLY
LT. & RT. STA. 1142+35	14	(6' LT. & 8' RT.)
LT. & RT. STA. 1171+32.5	12	(4' LT. & 8' RT.)
33' LT. STA. 1235+18	60	
34' LT. STA. 1238+26	50	
36' LT. STA. 1240+55	50	
40' LT. STA. 1242+76	50	
TOTAL = 236		

**ITEM NO. 542D0220 PIPE CULVERTS, CLASS D, TYPE 1 15"**

LOCATION	FOOT
33' RT. STA. 769+10	36
33' RT. STA. 781+25	150
36' LT. STA. 784+30	40
42' RT. STA. 858+90	56
33' RT. STA. 864+73	42
33' RT. STA. 1027+95	44
32' LT. STA. 1032+92	34
33' LT. STA. 1046+50	36
33' RT. STA. 1047+37	34
33' RT. STA. 1050+30	44
33' LT. STA. 1050+05	36
32' RT. STA. 1055+14	38
34' LT. STA. 1056+92	42
34' RT. STA. 1063+51	40
33' RT. STA. 1089+90	44
33' LT. STA. 1091+13	36
33' LT. STA. 1098+87	40
33' RT. STA. 1103+10	42
38' LT. STA. 1114+31	44
33' RT. STA. 1144+71	32
33' RT. STA. 1155+30	42
33' RT. STA. 1156+10	42
33' RT. STA. 1189+78	38
30' RT. STA. 1193+87	28
33' RT. STA. 1195+80	46
33' LT. STA. 1205+18	34
33' RT. STA. 1205+18	46
33' RT. STA. 1209+17	46
33' LT. STA. 1210+67	38
31' RT. STA. 1231+05	28
33' RT. STA. 1236+06	54
33' RT. STA. 1237+47	40
38' RT. STA. 1246+37	40
33' LT. STA. 1247+65 TO STA. 1248+70	104
36' RT. STA. 1247+09	40
34' RT. STA. 1247+75	40
33' RT. STA. 1248+53	48
33' LT. STA. 1248+70 TO STA. 1249+35	64
33' RT. STA. 1249+63	50
33' RT. STA. 1250+40	36
TOTAL = 1878	

REVISED BY IDOT

REVISIONS	
NAME	DATE
MJ	1-03-08

ILLINOIS DEPARTMENT OF TRANSPORTATION

SCHEDULE OF QUANTITIES

SCALE: VERT. HORIZ. DATE

DRAWN BY CHECKED BY

REVISED 2-14-08 MJ

F.A.P. RTE.	SECTION	COUNTY	TOTAL SHEETS	SHEET NO.
326		LIVINGSTON	354	25
STA.		TO STA.		
FED. ROAD DIST. NO.		ILLINOIS FED. AID PROJECT		
*(123,123)RS-3, (124)RS-5, (123)BR-3				

**ITEM NO. 70301000 WORK ZONE PAVEMENT MARKING REMOVAL**

CONSIST OF REMOVING THE SHORT-TERM & TEMPORARY PAVEMENT MARKING QUANTITIES.

DESCRIPTION	SQ. FT.
REMOVAL OF SHORT-TERM PAVEMENT MARKINGS	4,985
REMOVAL OF TEMPORARY PAVEMENT MARKINGS IF USED BEFORE PERMANENT STRIPES PLACED	43,916
REMOVAL OF STAGING PAVEMENT MARKINGS	7,133
<b>TOTAL = 56,034</b>	

**ITEM NO. 70400100 TEMPORARY CONCRETE BARRIER**

LOCATION	STAGE	FOOT
STA. 835+38 TO STA. 838+57	I	320
RT. STA. 836+78 TO STA. 837+18	II	40
STA. 943+90 TO STA. 953+90	I	1000
STA. 1214+49 TO STA. 1217+68	I	320
RT. STA. 1215+89 TO STA. 1216+29	II	40
STA. 1245+05 TO STA. 1246+64	I	160
<b>TOTAL = 1880</b>		

**ITEM NO. 70400200 RELOCATE TEMPORARY CONCRETE BARRIER**

LOCATION	FOOT
STA. 835+38 TO STA. 838+57	320
STA. 943+90 TO STA. 953+90	1000
STA. 1214+49 TO STA. 1217+68	320
STA. 1245+05 TO STA. 1246+64	160
<b>TOTAL = 1800</b>	

**ITEM NO. 78100100 RAISED REFLECTIVE PAVEMENT MARKER**

LOCATION	ONE-WAY AMBER EACH	TWO-WAY AMBER EACH	ONE-WAY CRYSTAL EACH
STA. 767+72 TO STA. 803+65.4 BRIDGE	--	45	--
STA. 803+65.4 TO STA. 947+99 BRIDGE	--	180	--
STA. 947+99 TO STA. 1235+15	--	359	--
STA. 1235+15 TO STA. 1253+42 (LT. -TURN-SEE STD. 781001)	34	30	3
STA. 1253+42 TO STA. 1273+30	--	25	--
SUBTOTAL	34	639	3
<b>TOTAL = 676</b>			

**ITEM NO. 78100105 RAISED REFLECTIVE PAVEMENT MARKER (BRIDGE)**

LOCATION	TWO-WAY AMBER EACH
STA. 803+65.4 TO STA. 805+91.3	3
STA. 947+99 TO STA. 950+51	3
<b>TOTAL = 6</b>	

**ITEM NO. 78200410 GUARDRAIL MARKERS, TYPE A**

(MONODIRECTIONAL SILVER)

LOCATION	EACH
LT. STA. 802+12.31 TO STA. 803+92.96	4
RT. STA. 801+19.91 TO STA. 804+13.06	4
LT. STA. 805+43.56 TO STA. 808+36.71	4
RT. STA. 805+63.12 TO STA. 807+43.77	4
LT. STA. 823+00.00 TO STA. 829+00.00	8
RT. STA. 813+87.50 TO STA. 838+37.50	14
LT. STA. 944+48.35 TO STA. 948+29.00	4
RT. STA. 944+73.35 TO STA. 948+29.00	4
LT. STA. 950+21.00 TO STA. 952+64.15	4
RT. STA. 950+21.00 TO STA. 951+76.65	4
<b>TOTAL = 54</b>	

**ITEM NO. 78200530 BARRIER WALL MARKERS, TYPE C**

TEMPORARY CONCRETE BARRIER (STAGING PLANS) (BASED ON STD. 701321-2 MARKERS EVERY 25' BI-DIRECTIONAL CRYSTAL

LOCATION	EACH
STA. 835+38 TO STA. 838+57	26
RT. STA. 836+78 TO STA. 837+18	4
STA. 943+90 TO STA. 953+90	80
STA. 1214+49 TO STA. 1217+68	26
RT. STA. 1215+89 TO STA. 1216+29	4
STA. 1245+05 TO STA. 1246+64	12
STRUCTURE 053-0179 @ STA. 949+25	4
(MONO-DIRECTIONAL CRSTAL STD. 635011)	
<b>TOTAL = 156</b>	

**ITEM NO. 78201000 TERMINAL MARKER-DIRECT APPLIED**

LOCATION	EACH
LT. 802+12.31	1
RT. 801+19.91	1
LT. 808+36.71	1
RT. 807+43.77	1
LT. 823+00.00	1
LT. 829+00.00	1
RT. 813+87.50	1
RT. 838+37.50	1
LT. 944+48.35	1
RT. 944+73.35	1
LT. 952+64.15	1
RT. 951+76.65	1
<b>TOTAL = 12</b>	

**ITEM NO. 78300100 PAVEMENT MARKING REMOVAL**

(REMOVAL OF EXISTING PAVEMENT MARKINGS CONFLICTING WITH STAGING PLANS)

LOCATION	SQ. FT.
STA. 833+50 TO STA. 840+50	555
STA. 942+00 TO STA. 955+80	1093
STA. 1212+70 TO STA. 1219+60	546
STA. 1240+55 TO STA. 1248+50	629
<b>TOTAL = 2823</b>	

**ITEM NO. 78300200 RAISED REFLECTIVE PAVEMENT MAKER REMOVAL**

LOCATION	EACH
STA. 767+72 TO STA. 1273+30	632
<b>TOTAL = 632</b>	

**ITEM NO. X0323265 REMOVE EXISTING RIPRAP**

LOCATION	SQ. YD.
LT. STA. 856+20	20
RT. STA. 1061+37	25
LT. STA. 1118+10	16
LT. STA. 1216+10	50
<b>TOTAL = 111</b>	

**ITEM NO. X0323988 TEMPORARY SOIL RETENTION SYSTEM**

LOCATION	SQ. FT.
STA. 836+98 (STAGE I & II)	150
STA. 1216+09 (STAGE I & II)	145
STA. 1245+85 (STAGE I & II)	130
<b>TOTAL = 425</b>	

**ITEM NO. X0324762 WIDE LOAD DETOUR SIGNING**

LOCATION	L SUM
STA. 949+25 (SN 053-0050)	1
STA. 1245+85 (DBL. 6'x2' RCBC)	

**ITEM NO. XX005374 PIPE UNDERDRAINS 6" (MODIFIED)**

(QUANTITY PROVIDED BY DISTRICT)

LOCATION	FOOT
DRAINAGE EASEMENT AT STA. 1245+85	305
<b>TOTAL = 305</b>	

**ITEM NO. X0976500 END SECTIONS TO BE REMOVED**

CULVERT NO.	LOCATION	SIZE	TYPE	EACH
①	LT. & RT. STA. 774+90	3' x 2'	PCBC	2
②	RT. STA. 788+96	3' x 2'	PCBC	1
③	LT. & RT. STA. 810+98.5	3' x 2'	PCBC	2
⑥	LT. STA. 844+02.5	3' x 2'	PCBC	1
⑧	LT. & RT. STA. 1008+02	3' x 2'	PCBC	2
⑨	LT. & RT. STA. 1044+02	3' x 2'	PCBC	2
⑩	LT. & RT. STA. 1061+37	3' x 2'	PCBC	2
---	RT. STA. 1076+34	18"	METAL	1
---	LT. & RT. STA. 1142+35	36" ERS	CONC	2
---	LT. & RT. STA. 1171+32.5	36" ERS	CONC	2
⑬	LT. & RT. STA. 1245+20	3' x 2'	PCBC	2
<b>TOTAL = 19</b>				

**ITEM NO. 35501308 HOT-MIX ASPHALT BASE COURSE, 6"**

LOCATION	DESCRIPTION	SQ. YD.
RT. STA. 769+10	P. E.	44
RT. STA. 781+25	P. E.	36
LT. STA. 992+65	P. E.	38
RT. STA. 996+64	P. E.	49
LT. STA. 1000+87	P. E.	78
LT. STA. 1035+25	P. E.	36
RT. STA. 1047+37	P. E.	81
LT. STA. 1050+05	P. E.	79
LT. STA. 1091+13	P. E.	36
RT. STA. 1144+71	P. E.	36
RT. STA. 1189+78	P. E.	49
RT. STA. 1192+62.5	P. E.	40
RT. STA. 1193+87	P. E.	40
LT. STA. 1205+18	P. E.	36
RT. STA. 1231+05	P. E.	36
RT. STA. 1236+06	C. E.	28
RT. STA. 1237+47	C. E.	61
LT. STA. 1238+26	C. E.	208
LT. STA. 1240+55	C. E.	61
RT. STA. 1246+37	C. E.	47
RT. STA. 1247+09	C. E.	47
LT. STA. 1249+09	C. E.	61
RT. STA. 1250+40	C. E.	49
RT. STA. 1252+07	C. E.	28
<b>TOTAL = 1304</b>		

**ITEM NO. 35501320 HOT-MIX ASPHALT BASE COURSE, 9"**

LOCATION	SQ. YD.
LT. STA. 834+50 TO STA. 839+50	317
RT. STA. 834+50 TO STA. 839+50	444
LT. STA. 943+00 TO STA. 947+95	165
RT. STA. 944+90 TO STA. 947+95	102
LT. STA. 950+48 TO STA. 955+00	151
RT. STA. 950+48 TO STA. 952+90	81
RT. STA. 943+00 TO STA. 948+29	456
RT. STA. 950+21 TO STA. 955+00	300
LT. STA. 1213+50 TO STA. 1218+75	332
RT. STA. 1213+50 TO STA. 1218+75	332
LT. STA. 1240+55 TO STA. 1248+08	680
RT. STA. 1240+55 TO STA. 1248+08	653
<b>TOTAL = 4013</b>	

REVISIONS		ILLINOIS DEPARTMENT OF TRANSPORTATION
NAME	DATE	
		SCHEDULE OF QUANTITIES

△ REVISED 2/14/08

SCALE: VERT. DATE  
HORIZ. DRAWN BY CHECKED BY

F.A.P. RTE.	SECTION	COUNTY	TOTAL SHEETS	SHEET NO.
326		LIVINGSTON	354	66
STA. 1234+00		TO STA. 1240+00		
FED. ROAD DIST. NO. ILLINOIS FED. AID PROJECT				
*(123,123)RS-3,(124)RS-5,(123)BR-3				



LEGEND

- X - TREE REMOVAL
- - - - - SPECIAL DITCH
- - - - - STANDARD DITCH
- ▨ - RIPRAP
- ◇ - TEMP. DITCH CHECK

SEE SIDEROAD DETAILS

CLASS D PATCHES, 6 INCH OR AGGREGATE BASE CSE., TY. A 8" (SEE SIDEROAD DETAIL)

BM\*10 CHISELED "X" ON NORTHEAST BOLT, BOTTOM FLANGE FIRE HYDRANT 61' LT. STA. 1235+54 ELEV. 692.82

SEE SIDEROAD DETAIL SHEET FOR ADDITIONAL INFORMATION

STA. 1235+18.00, 85' LT. END CONST. MATCH EXISTING PAVEMENT FEATHER TAPER

STA. 1238+66, 30.2' LT. EXIST. 15" PLASTIC - 109' USFL - 688.33 DSFL - 687.68 REMOVE 8' OF PIPE MATCH BACKSLOPE AND OUTLET INTO ROADWAY DITCH

EXIST. CURVE EXCL-5  
PI STA. = 1241+73.46  
Δ = 1° 07' 50" (LT)  
D = 0° 07' 53"  
R = 43,56872'  
T = 429.83  
L = 859.64'  
E = 2.12'  
e = N.C.  
P.C. STA. = 1237+43.62  
P.T. STA. = 1246+03.26

STA. 1238+26, 34' LT. PIPE CULVERT, CLASS A, TYPE 1 - ERS 36" PRC FLARED END SECTIONS - ERS 36"

D.I. WATER MAIN FITTING 10" X 6" REDUCER

RONALD L. STEIDINGER

1238+93.18 45' LT.

1239+50 45' LT.

PROP. R.O.W.

EXIST. R.O.W.

R = 43,523.72

1239+07.00 55' RT.

1239+80.78 50' RT.

1240+03.00 55' RT.

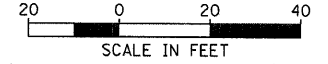
1239+80.78 50' RT.

STA. 1239+55, 33' RT. PIPE CULVERT, CLASS A, TYPE 1 - 15" PRC FLARED E.S. - 15"

JESSIE MYGATT, ET AL

STA. 1239+55.00, 75' RT. END CONST. MATCH EXISTING PAVEMENT FEATHER TAPER

REVISED BY IDOT



SEE SIDEROAD DETAIL SHEET FOR ADDITIONAL INFORMATION

REVISIONS	
NAME	DATE
MJ	12-24-07
MJ	1-03-08

ILLINOIS DEPARTMENT OF TRANSPORTATION

IL 47  
STA. 1234+00 TO STA. 1240+00

SCALE: VERT. HORIZ. DATE DRAWN BY CHECKED BY

SEC. 33, T27N, R7E, 3RD P.M.  
HOMER JOHN BLUNIER

EX. SAN. M.H. STA. 1234+79.19, 46.96' LT. T/G - 692.97 INV. - 682.94 (MANHOLE TO BE ADJUSTED)

STA. 1234+93, 105' LT. PIPE CULVERT, CLASS D, TYPE 1 - 18" END SECTIONS - 18" MATCH EXISTING DITCH FLOWLINE

STA. 1234+93, 82.6' LT. EXIST. 18" BIT. COAT CMP - 26' USFL - 691.04 DSFL - 690.71 (TO BE REMOVED)

1234+87.48 80' LT.

1234+70 55' LT.

1234+56.00 65' LT.

1234+88.93 90' RT.

1235+18.00 65' RT.

1235+60 50' RT.

1235+80.00 65' RT.

1235+42.84 70' RT.

1235+18.00 65' RT.

1235+18.00 65' RT.

1235+18.00 65' RT.

1235+18.00 65' RT.

1235+18.00 65' RT.

1235+18.00 65' RT.

1235+18.00 65' RT.

1235+18.00 65' RT.

1235+18.00 65' RT.

1235+18.00 65' RT.

1235+18.00 65' RT.

1235+18.00 65' RT.

1235+18.00 65' RT.

1235+18.00 65' RT.

1235+18.00 65' RT.

1235+18.00 65' RT.

1235+18.00 65' RT.

1235+18.00 65' RT.

1235+18.00 65' RT.

1235+18.00 65' RT.

1235+18.00 65' RT.

1235+18.00 65' RT.

1235+18.00 65' RT.

1235+18.00 65' RT.

1235+18.00 65' RT.

1235+18.00 65' RT.

SEC. 3, T26N, R7E, 3RD P.M. STATE OF ILLINOIS

EX. SAN. M.H. STA. 1237+87.84, 45.85' LT. T/G - 690.05 INV. - 681.71 (DO NOT DISTURB)

STA. 1235+20, 27.9' LT. EXIST. 15" CMP - 44' USFL - 689.76 DSFL - 689.30 (TO BE REMOVED)

STA. 1235+18, 33' LT. PIPE CULVERT, CLASS A, TYPE 1 - ERS 36" PRC FLARED END SECTIONS - ERS 36"

STA. 1235+18.00, 65' LT.

1235+80.00 65' LT.

1235+80.00 65' LT.

1235+80.00 65' LT.

1235+80.00 65' LT.

1235+80.00 65' LT.

1235+80.00 65' LT.

1235+80.00 65' LT.

1235+80.00 65' LT.

1235+80.00 65' LT.

1235+80.00 65' LT.

1235+80.00 65' LT.

1235+80.00 65' LT.

1235+80.00 65' LT.

1235+80.00 65' LT.

1235+80.00 65' LT.

1235+80.00 65' LT.

1235+80.00 65' LT.

1235+80.00 65' LT.

1235+80.00 65' LT.

1235+80.00 65' LT.

1235+80.00 65' LT.

1235+80.00 65' LT.

1235+80.00 65' LT.

1235+80.00 65' LT.

1235+80.00 65' LT.

1235+80.00 65' LT.

1235+80.00 65' LT.

1235+80.00 65' LT.

1235+80.00 65' LT.

1235+80.00 65' LT.

1235+80.00 65' LT.

1235+80.00 65' LT.

STA. 1236+06, 25.3' RT. EXIST. 12" CMP - 44' USFL - 688.54 DSFL - 688.17 (REPORTED BURIED) (TO BE REMOVED)

STA. 1237+54, 25.3' RT. EXIST. 12" CMP - 44' USFL - 688.54 DSFL - 688.17 (TO BE REMOVED)

FREEMAN L. VAUGHAN, ET UX SEC. 4, T26N, R7E, 3RD P.M.

STA. 1237+47, 33' RT. PIPE CULVERT, CLASS D, TYPE 1 - 15" END SECTIONS - 15"

EX. SAN. M.H. STA. 1237+83, 27.7' RT. T/G - 687.32 INV. - 681.38 +/- (MANHOLE TO BE ADJUSTED)

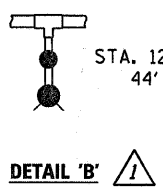
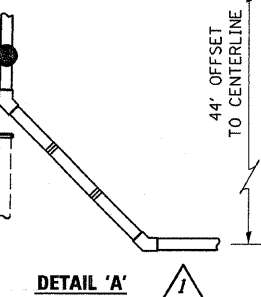
D.I. WATER MAIN TEE, 10" X 6" 1 LOCATION WATER VALVES 6" - 1 EACH 5' WATER MAIN 6" FIRE HYDRANTS - 1 EACH, 4.5' BURY

STA. 1239+35, 44' RT.

FIRE HYDRANTS TO BE REMOVED 36' RT., STA. 1239+29 35' RT., STA. 1239+82

STA. 1239+55.00 55.00' RT.

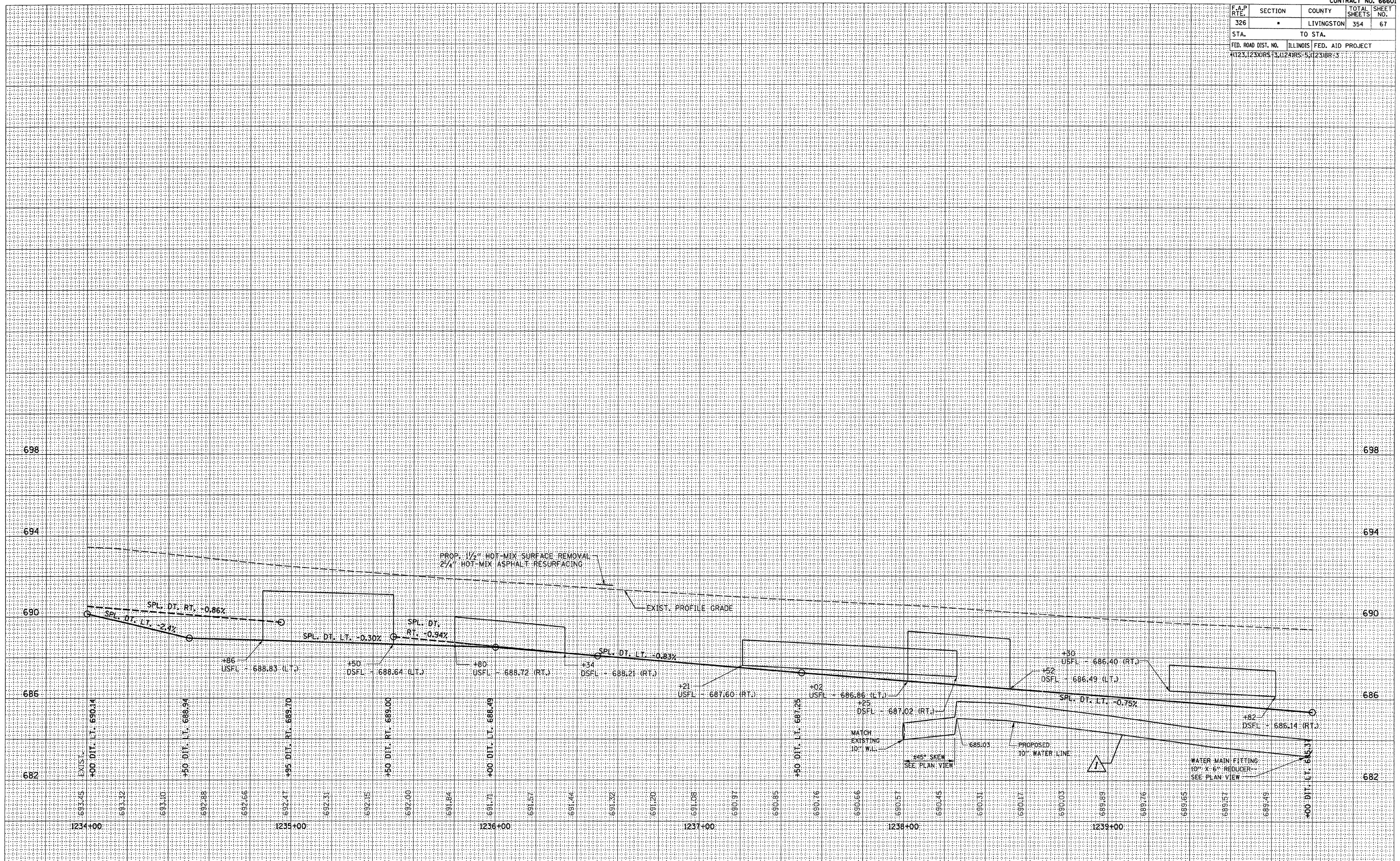
STA. 1238+75, 31.3' RT. EXIST. 15" CORR. PLASTIC USFL - UNKNOWN DSFL - 687.62 REPORTED FIELD TILE REMOVE 15' EX. PIPE CULVERT INSTALL 10' - PIPE DRAIN 18" CONST. CLASS SI CONCRETE HEADWALL SEE DISTRICT STANDARD FOR DETAILS



F.A.P. RTE.	SECTION	COUNTY	TOTAL SHEETS	SHEET NO.
326		LIVINGSTON	354	67
STA. TO STA.		ILLINOIS FED. AID PROJECT		
1231.23X/RS-13, (124)RS-5, (123)BR-3				

FINAL SURVEY	SURVEYED	BY	DATE
NO. _____	BOOK _____	_____	_____
AREAS CHECKED	TEMPLATE	_____	_____
_____	_____	_____	_____

ORIGINAL SURVEY	SURVEYED	BY	DATE
NO. _____	BOOK _____	_____	_____
AREAS CHECKED	TEMPLATE	_____	_____
_____	_____	_____	_____



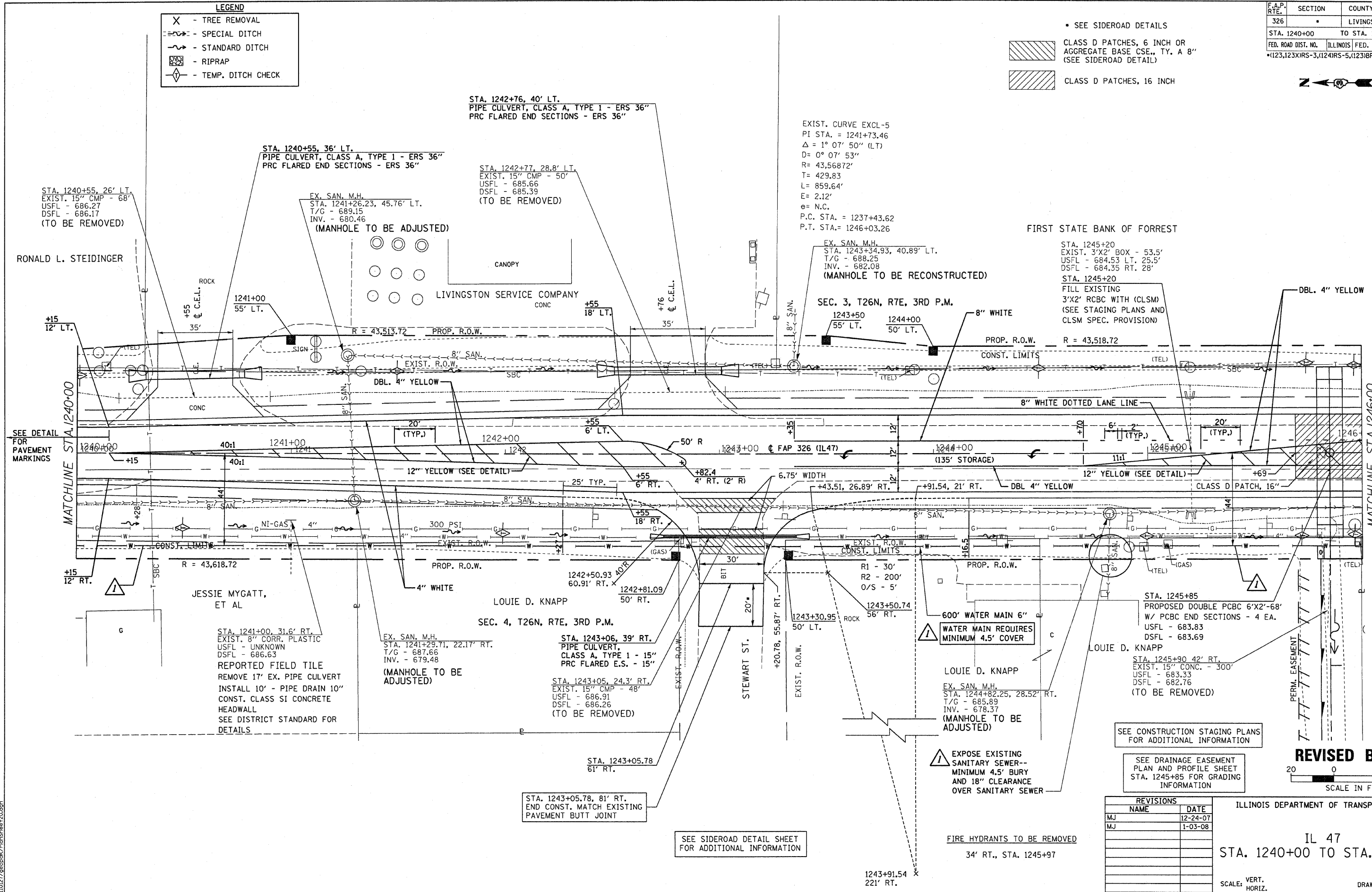
REVISD TO INCLUDE PROPOSED WATER MAIN 2-14-08 MJ IL 47 STA. 1234+00 TO STA. 1240+00

F.A.P. RTE.	SECTION	COUNTY	TOTAL SHEETS	SHEET NO.
326		LIVINGSTON	354	68
STA. 1240+00		TO STA. 1246+00		
FED. ROAD DIST. NO.		ILLINOIS FED. AID PROJECT		
		*(123,123)RS-3,(124)RS-5,(123)BR-3		

**LEGEND**

- X - TREE REMOVAL
- SPECIAL DITCH
- STANDARD DITCH
- ▨ RIPRAP
- ◇ TEMP. DITCH CHECK

- SEE SIDEROAD DETAILS
- ▨ CLASS D PATCHES, 6 INCH OR AGGREGATE BASE CSE., TY. A 8" (SEE SIDEROAD DETAIL)
- ▨ CLASS D PATCHES, 16 INCH



RONALD L. STEIDINGER

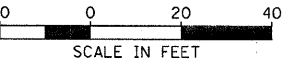
JESSIE MYGATT, ET AL

LOUIE D. KNAPP

LOUIE D. KNAPP

LOUIE D. KNAPP

REVISED BY IDOT



**REVISIONS**

NAME	DATE
MJ	12-24-07
MJ	1-03-08

ILLINOIS DEPARTMENT OF TRANSPORTATION

IL 47  
STA. 1240+00 TO STA. 1246+00

SCALE: VERT. \_\_\_\_\_  
HORIZ. \_\_\_\_\_

DATE \_\_\_\_\_

DRAWN BY \_\_\_\_\_  
CHECKED BY \_\_\_\_\_

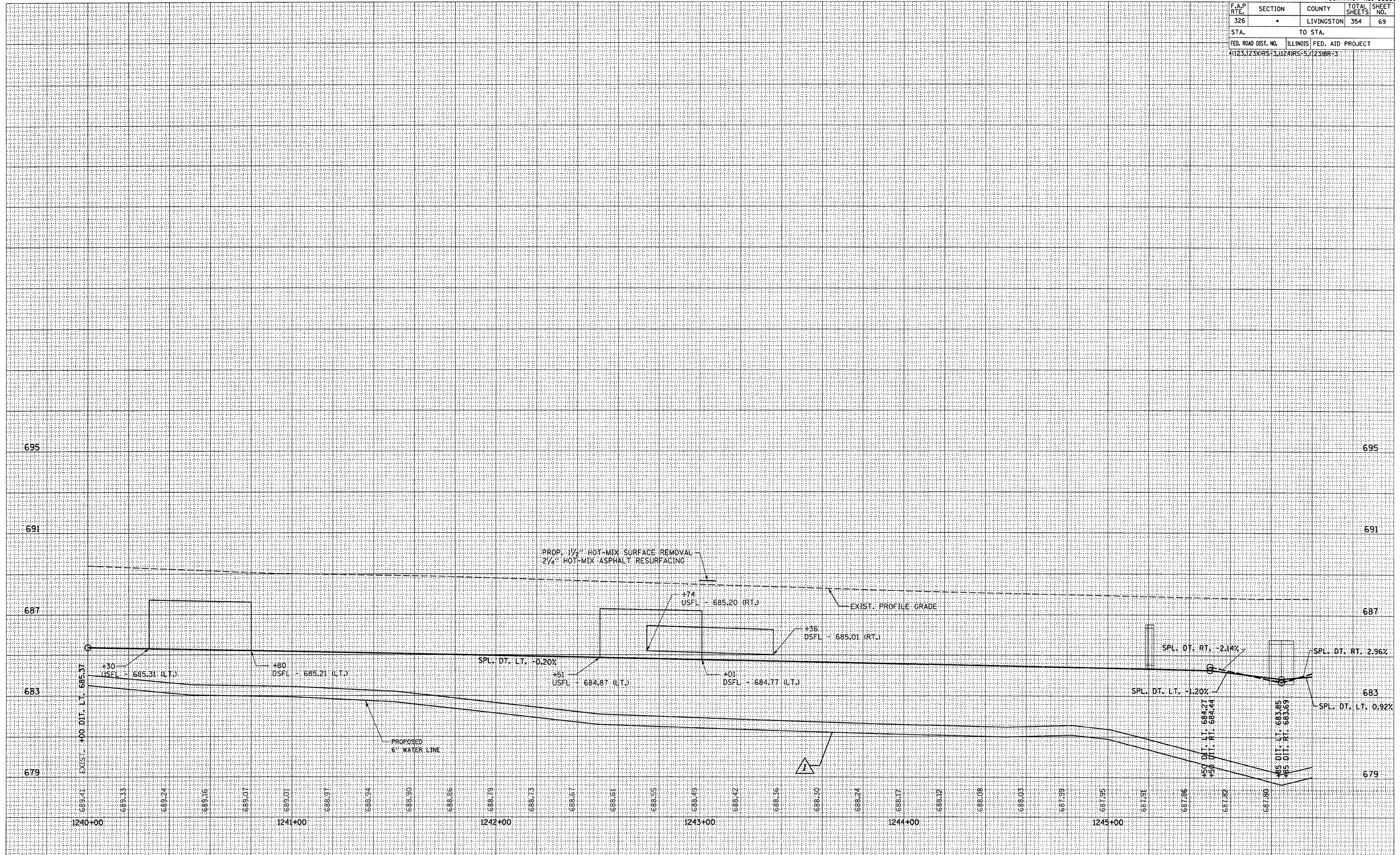
**REVIS** TO INCLUDE PROPOSED WATER MAIN 2-14-08 MJ IL 47 STA. 1240+00 TO STA. 1246+00

K:\11027\geopack\PlanSheet120.dgn

F.A.P. RTE.	SECTION	COUNTY	TOTAL SHEETS	SHEET NO.
326		LIVINGSTON	354	69
STA.		TO STA.		
FED. ROAD DIST. NO.		ILLINOIS FED. AID PROJECT		
1123,123WRS-3,124RS-5,123BR-3				

FINAL SURVEY	DATE
NO. _____	_____
BY _____	_____
REVISIONS	DATE
NO. _____	_____
DESCRIPTION	DATE
NO. _____	_____

ORIGINAL SURVEY	DATE
NO. _____	_____
BY _____	_____
REVISIONS	DATE
NO. _____	_____
DESCRIPTION	DATE
NO. _____	_____



**REVISD TO INCLUDE PROPOSED WATER MAIN 2-14-08 MJ** IL 47 STA. 1240+00 TO STA. 1246+00

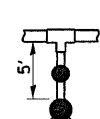
F.A.P. RTE.	SECTION	COUNTY	TOTAL SHEETS	SHEET NO.
326		LIVINGSTON	354	70
STA. 1240+00		TO STA. 1246+00		
FED. ROAD DIST. NO.		ILLINOIS FED. AID PROJECT		
*(123,123)RS-3,(124)RS-5,(123)BR-3				

SEC. 3, T26N, R7E, 3RD P.M.

D.I. WATER MAIN FITTING  
 4" X 6" REDUCER  
 WATER VALVES 6" - 1 EACH  
 D.I. WATER MAIN FITTINGS  
 45° BEND 6", 2 LOCATIONS  
 CUT AND CAP EXISTING  
 4" WATER MAIN

**LEGEND**

- X - TREE REMOVAL
- ▨ - PAVEMENT REMOVAL & CLASS D PATCH
- - - - SPECIAL DITCH
- - - - STANDARD DITCH
- ▨ - RIPRAP
- ◇ - TEMP. DITCH CHECK



D.I. WATER MAIN TEE, 6" X 6"  
 1 LOCATION  
 WATER VALVES 6" - 1 EACH  
 5' WATER MAIN 6"  
 FIRE HYDRANTS - 1 EACH, 5.5' BURY

STA. 1246+15, 44' RT.

DETAIL 'C'

STA. 1248+70, 33' LT.  
 MANHOLE, TYPE A, 4' DIA.,  
 WITH TYPE 8 GRATE  
 T/G - 687.00  
 F.L. - 685.00

GRADE AREA BETWEEN DRIVES TO DRAIN TO MANHOLE

DETAIL 'D'

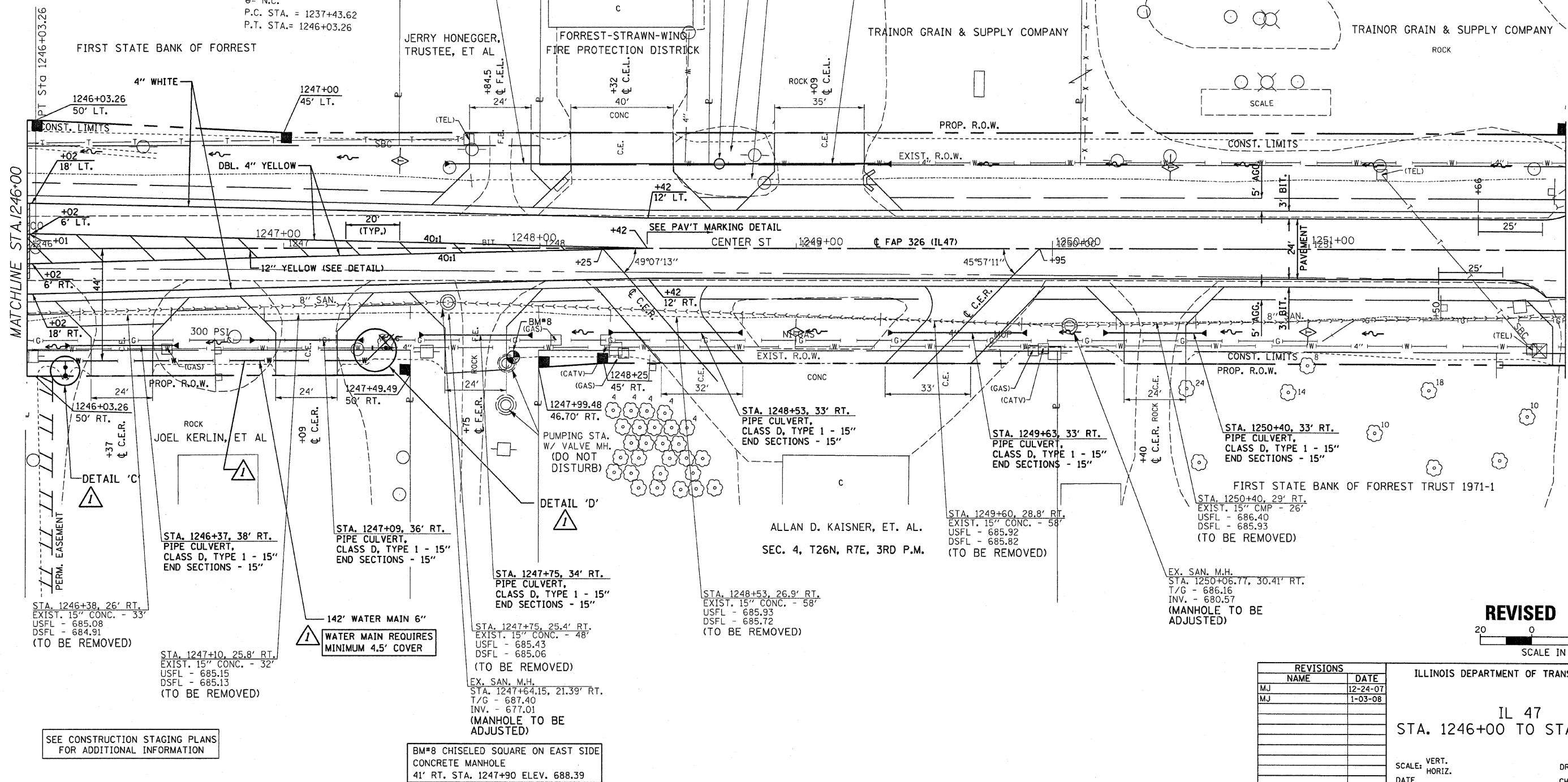
STA. 1247+40, 39' RT.

EXIST. CURVE EXCL-5  
 PI STA. = 1241+73.46  
 $\Delta = 1^\circ 07' 50''$  (LT)  
 $D = 0^\circ 07' 53''$   
 $R = 43,568.72'$   
 $T = 429.83$   
 $L = 859.64'$   
 $E = 2.12'$   
 $\theta = N.C.$   
 P.C. STA. = 1237+43.62  
 P.T. STA. = 1246+03.26

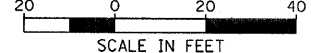
STA. 1247+65 TO STA. 1248+70, 33' LT.  
 PIPE CULVERT, CLASS D, TYPE 1 - 15"  
 END SECTIONS - 15"

STA. 1248+50, 26.9' LT.  
 EXIST. 15" CMP - U.S., 15" VCP - D.S. - 135'  
 USFL - 685.47  
 DSFL - 685.31  
 (TO BE REMOVED)

STA. 1248+70 TO STA. 1249+35, 33' LT.  
 PIPE CULVERT, CLASS D, TYPE 1 - 15"  
 END SECTIONS - 15"



REVISED BY IDOT



REVISIONS	
NAME	DATE
MJ	12-24-07
MJ	1-03-08

ILLINOIS DEPARTMENT OF TRANSPORTATION

IL 47  
 STA. 1246+00 TO STA. 1252+00

SCALE: VERT. \_\_\_\_\_  
 HORIZ. \_\_\_\_\_

DATE \_\_\_\_\_ DRAWN BY \_\_\_\_\_  
 CHECKED BY \_\_\_\_\_

REVISED TO INCLUDE PROPOSED WATER MAIN 2-14-08 MJ IL 47 STA. 1246+00 TO STA. 1252+00

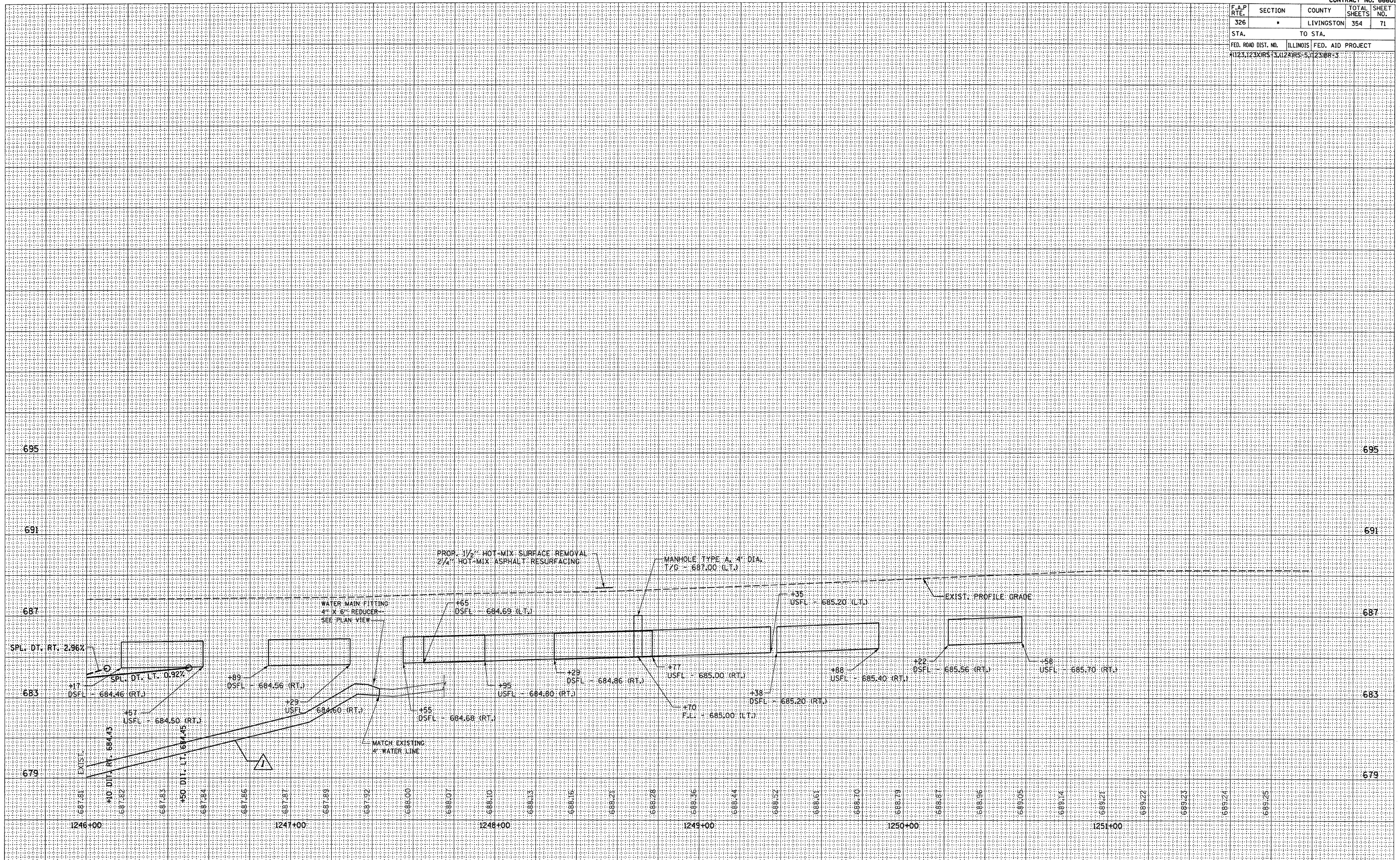
K:\110127\Geopak\PlanSheet120.dgn



F.A.P. RTE.	SECTION	COUNTY	TOTAL SHEETS	SHEET NO.
326		LIVINGSTON	354	71
STA.		TO STA.		
FED. ROAD DIST. NO.		ILLINOIS FED. AID PROJECT		
1023.123XORS-3.024RS-5.1231BR-3				

FINAL SURVEY	BY	DATE
DESIGNED		
PLOTTED		
NOTE BOOK		
AREAS CHECKED		
NO.		

ORIGINAL SURVEY	BY	DATE
DESIGNED		
PLOTTED		
NOTE BOOK		
AREAS CHECKED		
NO.		

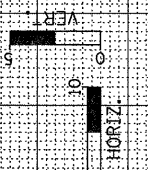
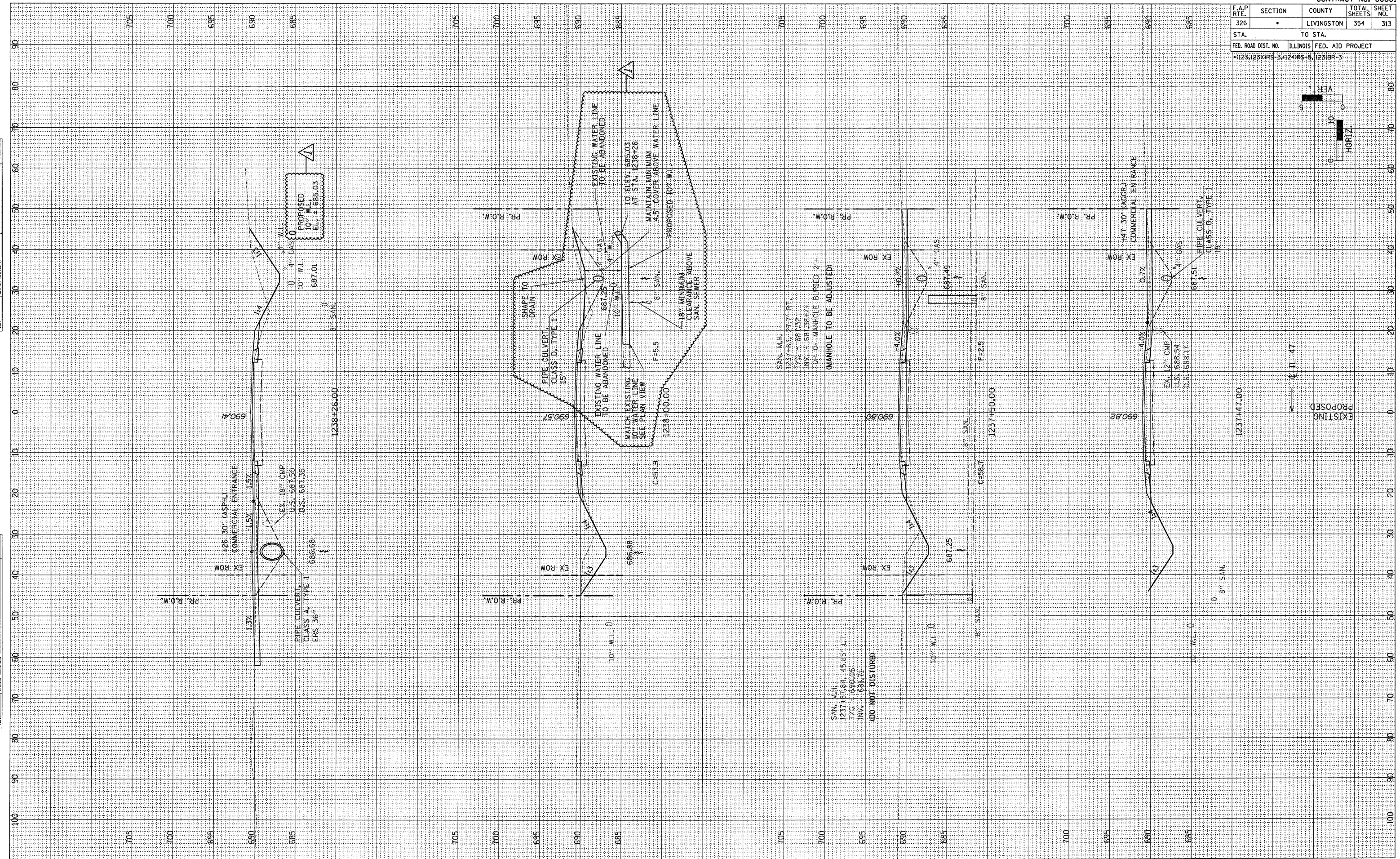


**△ REVISED TO INCLUDE PROPOSED WATER MAIN 2-14-08 MJ IL 47 STA. 1246+00 TO STA. 1252+00**

F.A.P. RTE.	SECTION	COUNTY	TOTAL SHEETS	SHEET NO.
326	•	LIVINGSTON	354	313
STA.	TO STA.			
FED. ROAD DIST. NO.	ILLINOIS	FED. AID PROJECT		
*123,123KRS-3,124RS-5,123ER-3				

DATE	BY
SURVEYED	PLOTTED
NOTE BOOK	REPLATE
NO.	AREAS CHECKED

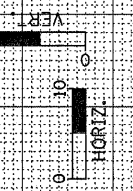
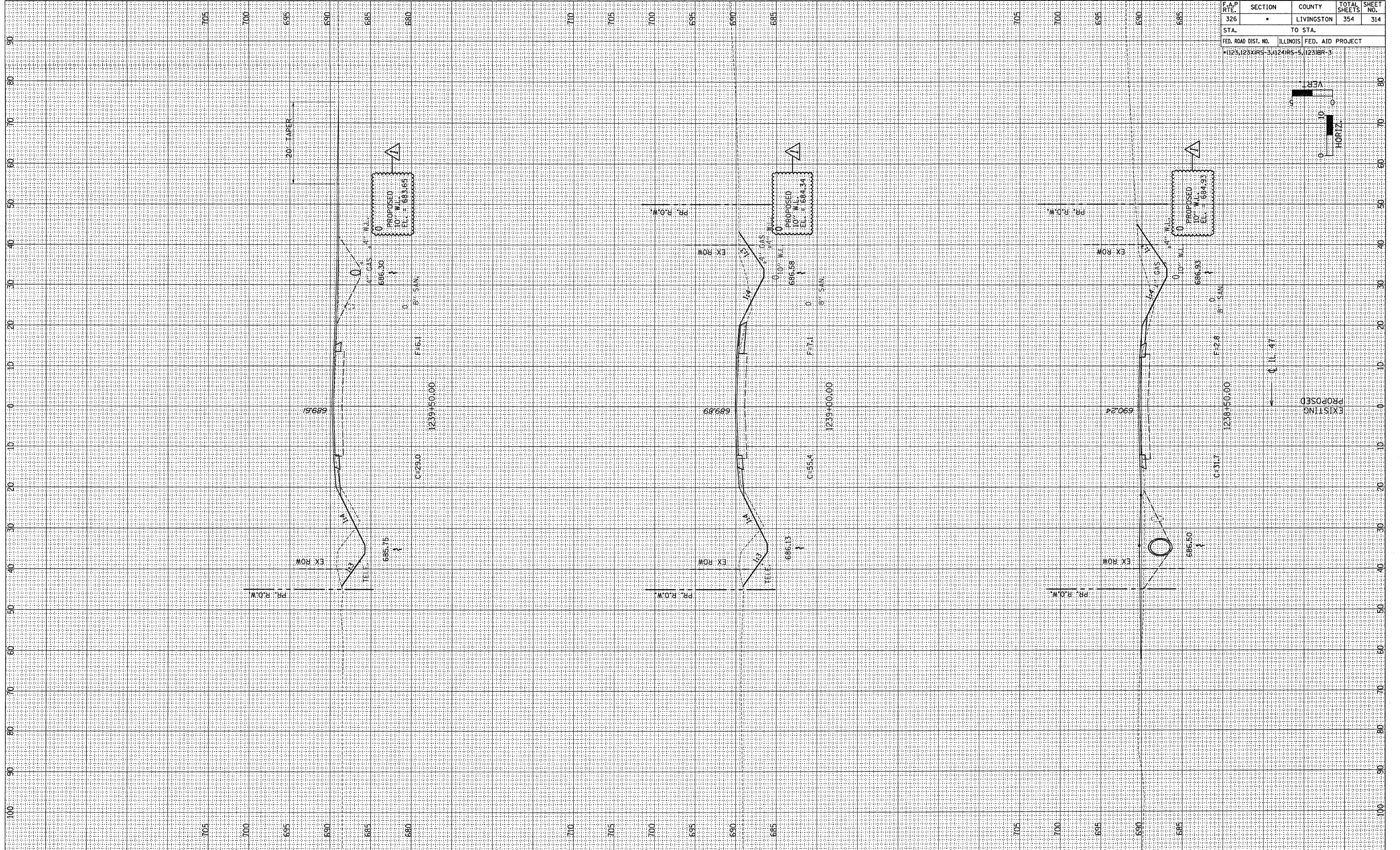
DATE	BY
SURVEYED	PLOTTED
NOTE BOOK	REPLATE
NO.	AREAS CHECKED



F.A.P. RTE.	SECTION	COUNTY	TOTAL SHEETS	SHEET NO.
326		LIVINGSTON	354	314
STA.		TO STA.		
FED. ROAD DIST. NO.		ILLINOIS FED. AID PROJECT		
*123,123XIRS-3,124IRS-5,123IER-3				

BY	DATE

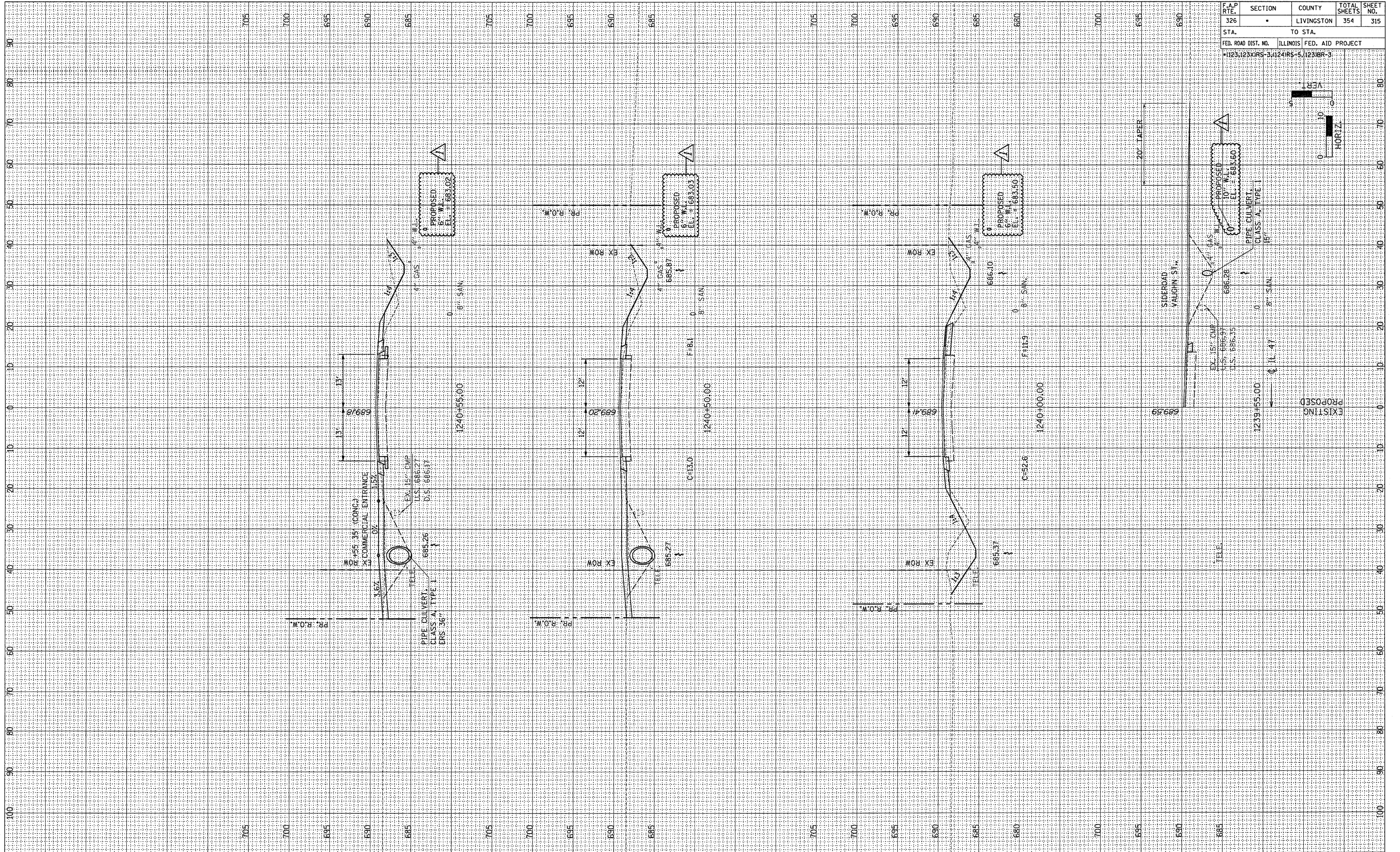
BY	DATE



F.A.P. RTE.	SECTION	COUNTY	TOTAL SHEETS	SHEET NO.
326		LIVINGSTON	354	315
STA.		TO STA.		
FED. ROAD DIST. NO.		ILLINOIS FED. AID PROJECT		
		1123,123X1R5-3,124R5-5,1231R-3		

DATE	BY

DATE	BY

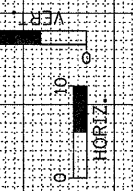
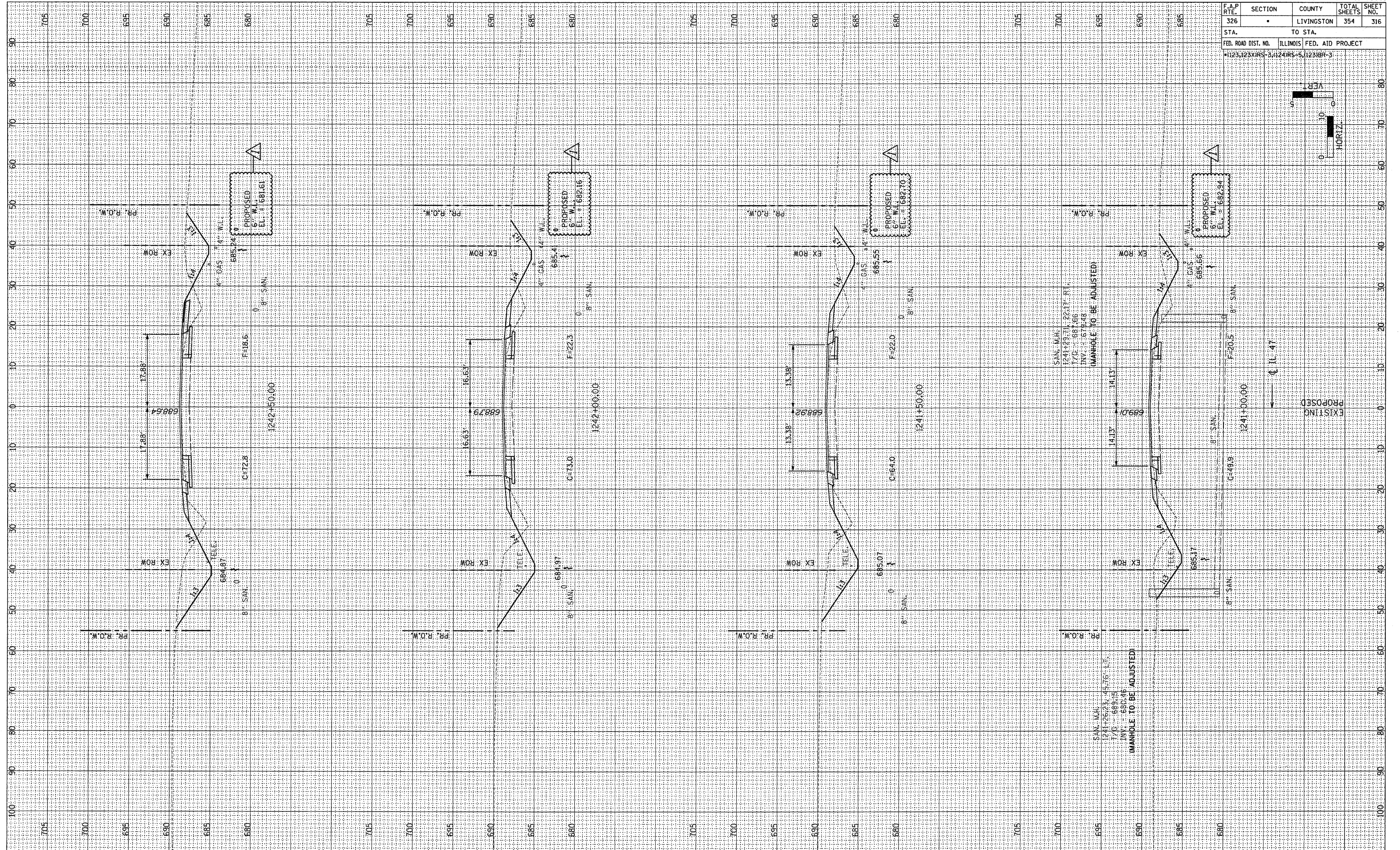


REVISD TO INCLUDE PROPOSED WATER MAIN 2-14-08 MJ F.A.P. 326 (IL 47)

F.A.P. RTE.	SECTION	COUNTY	TOTAL SHEETS	SHEET NO.
326		LIVINGSTON	354	316
STA. TO STA.				
FED. ROAD DIST. NO. ILLINOIS FED. AID PROJECT				
1123,123XRS-3,1241RS-5,1231BR-3				

BY	DATE
FINAL SURVEY	SURVEYED
PLOTTED	PLOTTED
TEMPLATE	TEMPLATE
NO. BOOK	NO. BOOK
AREAS CHECKED	AREAS CHECKED

BY	DATE
ORIGINAL SURVEY	SURVEYED
PLOTTED	PLOTTED
TEMPLATE	TEMPLATE
NO. BOOK	NO. BOOK
AREAS CHECKED	AREAS CHECKED

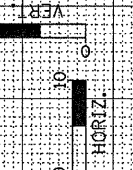
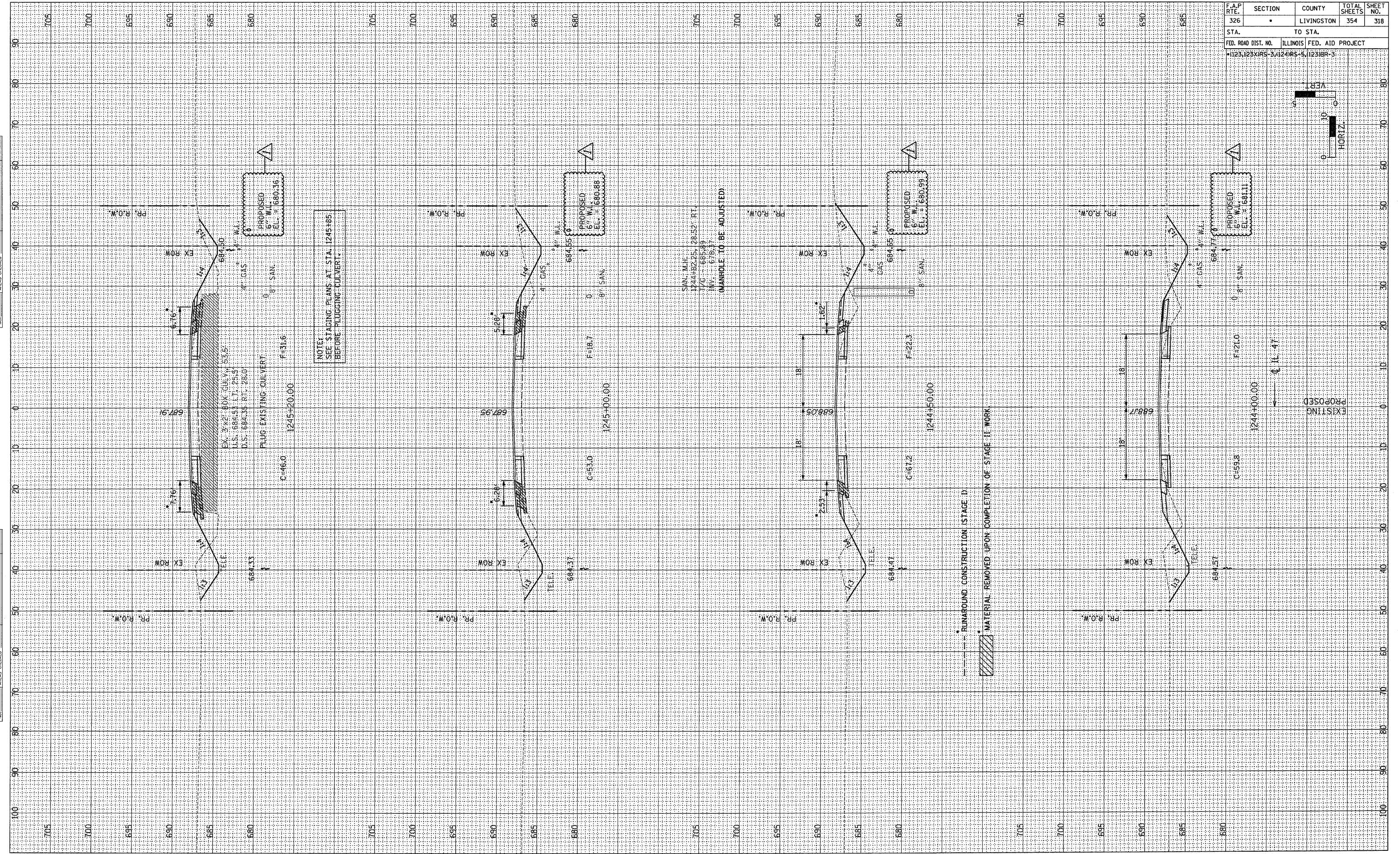




F.A.P. RTE.	SECTION	COUNTY	TOTAL SHEETS	SHEET NO.
326		LIVINGSTON	354	318
STA.		TO STA.		
FED. ROAD DIST. NO.		ILLINOIS FED. AID PROJECT		
1123,123XRS-3,4124RS-6,1123BR-3				

DATE	BY
SURVEYED	
PLOTTED	
TEMPLATE	
NO. BOOK	
AREAS CHECKED	

DATE	BY
ORIGINAL SURVEY	
PLOTTED	
TEMPLATE	
NO. BOOK	
AREAS CHECKED	



--- RUMOROUND CONSTRUCTION (STAGE I)  
 [Hatched Area] MATERIAL REMOVED UPON COMPLETION OF STAGE II WORK

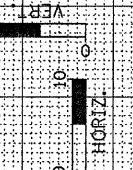
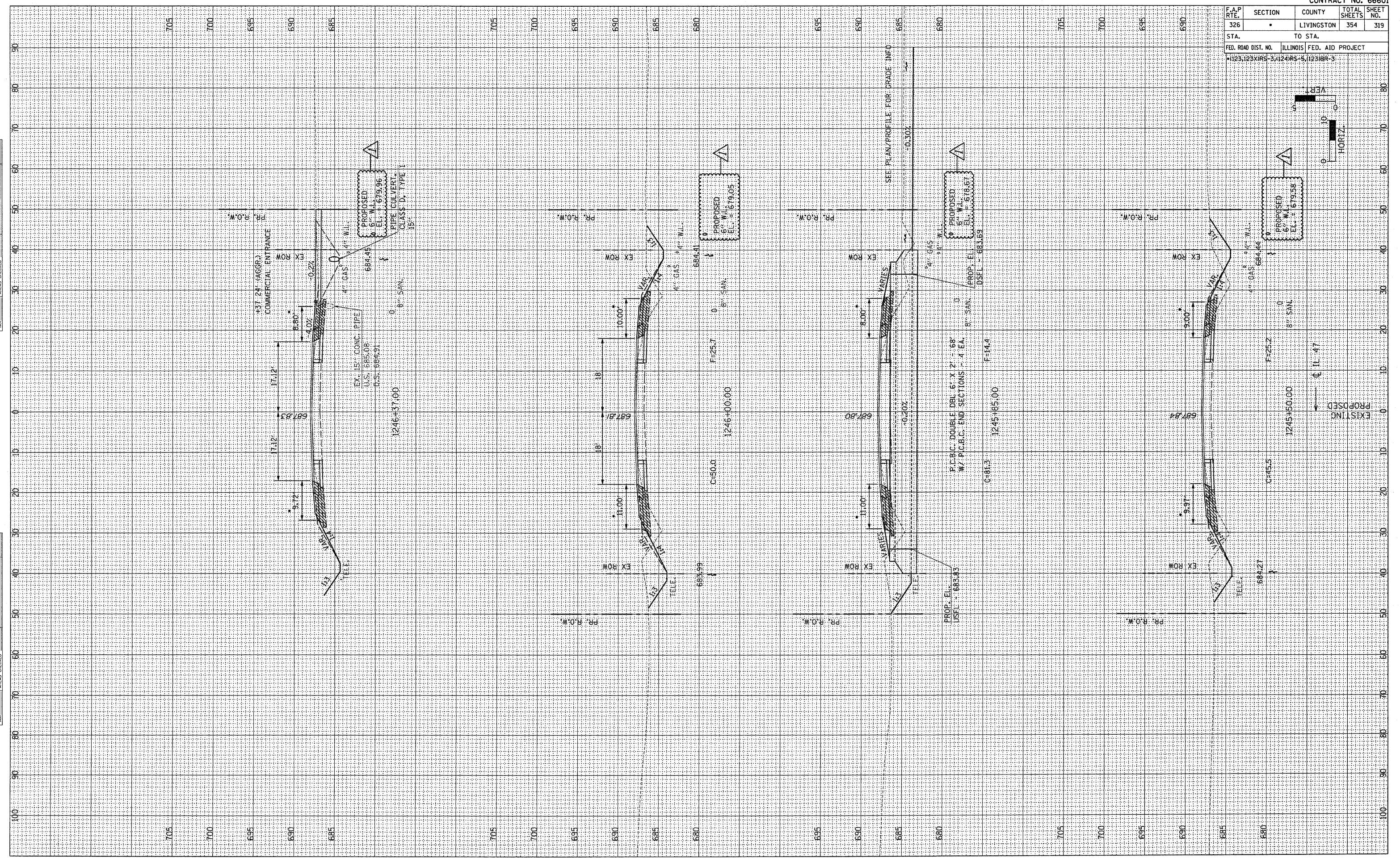
NOTE:  
 SEE STAGING PLANS AT STA. 1245+85  
 BEFORE PLUGGING CULVERT.

SAN. M.H.  
 1244+50.25, 28.32' RT.  
 I/G = 685.49  
 I/V = 678.47  
 (MANHOLE TO BE ADJUSTED)

F.A.P. RTE.	SECTION	COUNTY	TOTAL SHEETS	SHEET NO.
326		LIVINGSTON	354	319
STA.		TO STA.		
FED. ROAD DIST. NO.		ILLINOIS FED. AID PROJECT		
1123,123XORS-3,4124RS-6,1123BR-3				

BY	DATE

BY	DATE





F.A.P. RTE.	SECTION	COUNTY	TOTAL SHEETS	SHEET NO.
326	*	LIVINGSTON	354	320
STA.		TO STA.		
FED. ROAD DIST. NO.		ILLINOIS FED. AID PROJECT		
1123123XRS-3, 1124RS-5, 1123BR-3				

DATE	BY

DATE	BY

