

F.A.P. RTE.	SECTION	COUNTY	TOTAL SHEETS	SHEET NO.
326	*	LIVINGSTON	354	37
STA. 800+00		TO STA. 815+00		
FED. ROAD DIST. NO.		ILLINOIS FED. AID PROJECT		
		#(123)XRS-3,(124)RS-5,(123)BR-3		

SEC. 27, T28N, R7E, 3RD P.M.

R.J. LANNON, TRUSTEE

LT. & RT. STA. 802+12 TO 808+37
REMOVE EXISTING GUARDRAIL AND
TERMINAL END SECTIONS.
SEE SCHEDULES FOR REMOVAL AND
REPLACEMENT QUANTITIES.

SEE FAP 326 (IL RTE. 47) & 1700 N & 1600 N
INTERSECTION DETAIL SHEET AND SIDEROAD
DETAIL SHEET FOR ADDITIONAL INFORMATION

R.J. LANNON, TRUSTEE SEC. 22, T28N, R7E, 3RD P.M.

LEGEND

- X - TREE REMOVAL
- ▨ - PAVEMENT REMOVAL & CLASS D PATCH
- - SPECIAL DITCH
- - - - STANDARD DITCH
- ▩ - RIPRAP
- ◇ - TEMP. DITCH CHECK

STA. 800+25, 47' LT.
PIPE CULVERT,
CLASS D, TYPE 1 - 24"
END SECTIONS - 24"

STA. 800+25, 35.3' LT.
EXIST. 24" CMP - 38"
USFL - 661.91
DSFL - 661.80
(TO BE REMOVED)

REPORTED FIELD TILE
(SEE GENERAL NOTES -
FIELD TILE WORK)

BRIDGE OMISSION
STA. 803+65.4 TO STA. 805+91.3

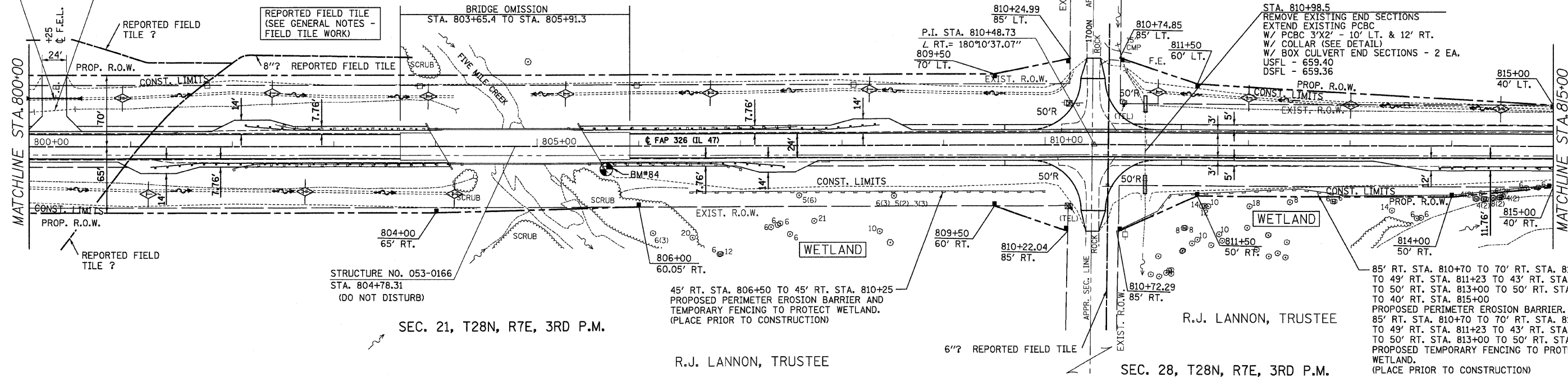
P.I. STA. 810+48.73
Z RT. = 180°10'37.07"
809+50
70' LT.

STA. 810+98.5
EXIST. 3'X2' BOX - 68"
USFL - 659.40 LT. 35"
DSFL - 659.37 RT. 33"

STA. 810+98.5
REMOVE EXISTING END SECTIONS
EXTEND EXISTING PCBC
W/ PCBC 3'X2' - 10' LT. & 12' RT.
W/ COLLAR (SEE DETAIL)
W/ BOX CULVERT END SECTIONS - 2 EA.
USFL - 659.40
DSFL - 659.36

815+00
40' LT.

PLAN	SURVEYED	DATE
	BY	
	NOTED	
	NO. _____	



STRUCTURE NO. 053-0166
STA. 804+78.31
(DO NOT DISTURB)

45' RT. STA. 806+50 TO 45' RT. STA. 810+25
PROPOSED PERIMETER EROSION BARRIER AND
TEMPORARY FENCING TO PROTECT WETLAND.
(PLACE PRIOR TO CONSTRUCTION)

85' RT. STA. 810+70 TO 70' RT. STA. 811+10
TO 49' RT. STA. 811+23 TO 43' RT. STA. 812+50
TO 50' RT. STA. 813+00 TO 50' RT. STA. 814+00
TO 40' RT. STA. 815+00
PROPOSED PERIMETER EROSION BARRIER.
85' RT. STA. 810+70 TO 70' RT. STA. 811+10
TO 49' RT. STA. 811+23 TO 43' RT. STA. 812+50
TO 50' RT. STA. 813+00 TO 50' RT. STA. 814+00
PROPOSED TEMPORARY FENCING TO PROTECT
WETLAND.
(PLACE PRIOR TO CONSTRUCTION)

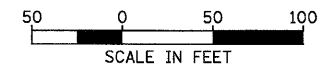
SEC. 21, T28N, R7E, 3RD P.M.

R.J. LANNON, TRUSTEE

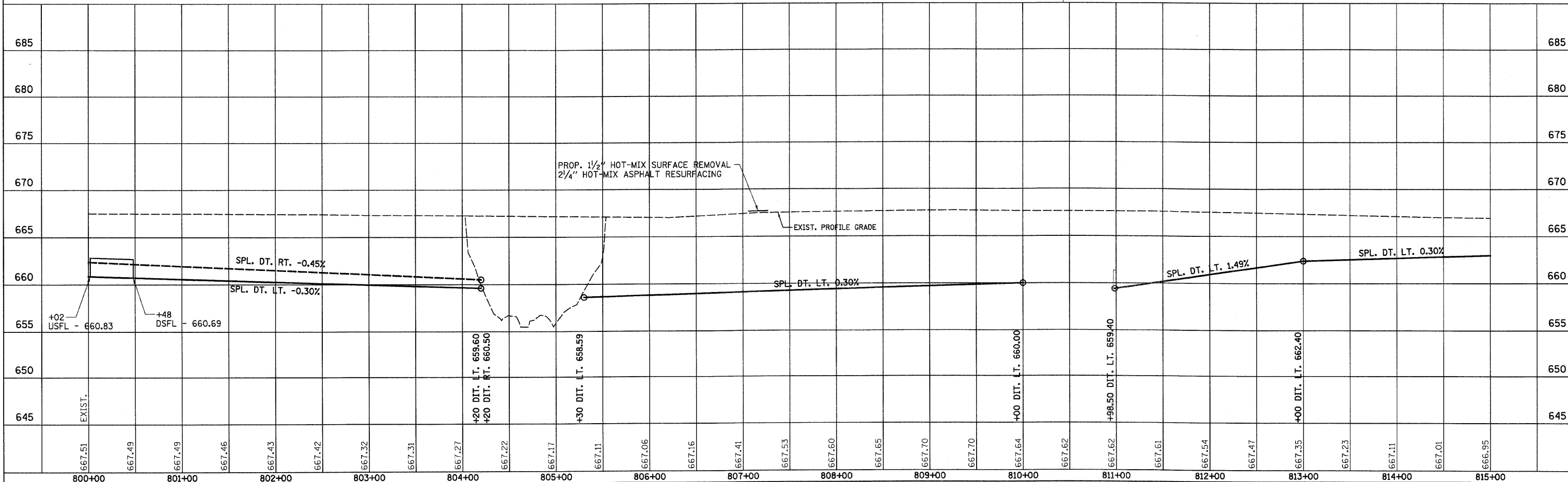
SEC. 28, T28N, R7E, 3RD P.M.

R.J. LANNON, TRUSTEE

BM#84 CHISELED SQUARE ON SOUTHWEST
WINGWALL 18.7' RT. STA. 805+64.5 ELEV. 667.62



PROFILE	SURVEYED	DATE
	BY	
	NOTED	
	NO. _____	



IL 47 STA. 800+00 TO STA. 815+00