

F.A.P. RTE.	SECTION	COUNTY	TOTAL SHEETS	SHEET NO.
326	*	LIVINGSTON	354	46

STA. 935+00 TO STA. 950+00

FED. ROAD DIST. NO. ILLINOIS FED. AID PROJECT

(123,123)RS-3,(124)RS-5,(123)BR-3

SEE STRUCTURE PLANS FOR ADDITIONAL INFORMATION

SEE CONSTRUCTION STAGING PLANS FOR ADDITIONAL INFORMATION

LEGEND

- X - TREE REMOVAL
- ▨ - PAVEMENT REMOVAL & CLASS D PATCH
- - - - - SPECIAL DITCH
- - - - - STANDARD DITCH
- ▨ - RIPRAP
- ◇ - TEMP. DITCH CHECK



STA. 943+25 TO STA. 945+00
 PIPE CULVERT, CL. A, TY. 2
 24" X 176'
 W/ PRC FLARED END SECT. - 1 EA.
 USFL - 644.32
 DSFL - 643.80

75' LT. STA. 943+75 TO 52' LT. STA. 944+00
 TO 52' LT. STA. 944+75 TO 40' LT. STA. 945+20
 TO 40' LT. STA. 947+00.
 PROPOSED TEMPORARY FENCING TO PROTECT WETLAND.
 (PLACE PRIOR TO CONSTRUCTION)

75' LT. STA. 943+75 TO 52' LT. STA. 944+00
 TO 52' LT. STA. 944+75 TO 40' LT. STA. 945+20
 TO 40' LT. STA. 948+75.
 PROPOSED PERIMETER EROSION BARRIER.
 (PLACE PRIOR TO CONSTRUCTION)

BLUESTEM NATIONAL BANK, TRUSTEE, ET AL

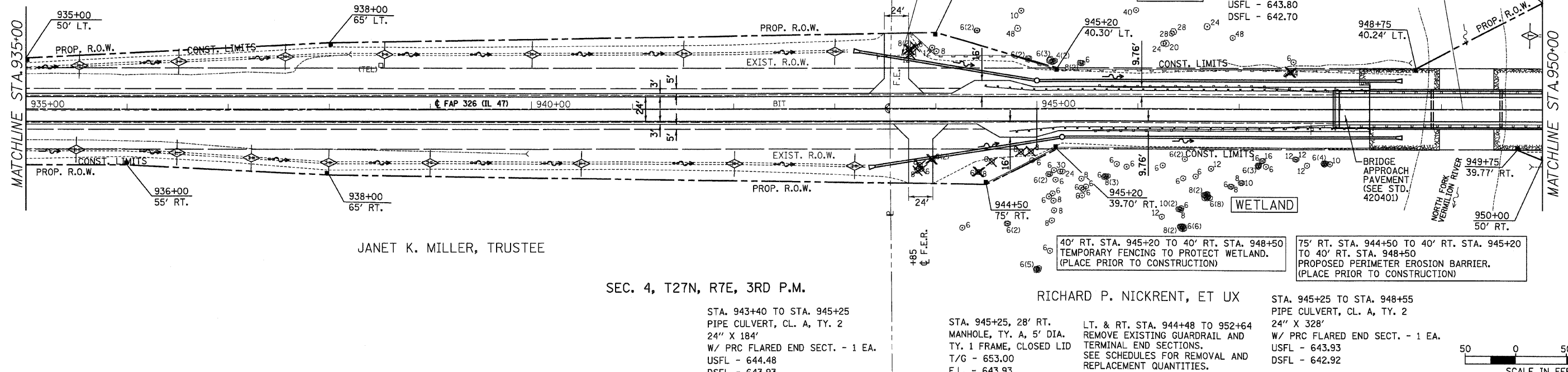
SEC. 3, T27N, R7E, 3RD P.M.

RAY L. LINDLEY, ET UX

STA. 949+25
 EX. STRUCTURE NO. 053-0050
 (TO BE REPLACED)
 PROP. STRUCTURE NO. 053-0179

STA. 945+00 TO STA. 948+55
 PIPE CULVERT, CL. A, TY. 2
 24" X 354'
 W/ PRC FLARED END SECT. - 1 EA.
 USFL - 643.80
 DSFL - 642.70

950+00
 105' LT.



JANET K. MILLER, TRUSTEE

SEC. 4, T27N, R7E, 3RD P.M.

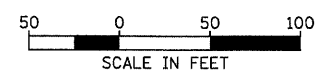
RICHARD P. NICKRENT, ET UX

STA. 945+25 TO STA. 948+55
 PIPE CULVERT, CL. A, TY. 2
 24" X 328'
 W/ PRC FLARED END SECT. - 1 EA.
 USFL - 643.93
 DSFL - 642.92

STA. 943+40 TO STA. 945+25
 PIPE CULVERT, CL. A, TY. 2
 24" X 184'
 W/ PRC FLARED END SECT. - 1 EA.
 USFL - 644.48
 DSFL - 643.93

STA. 945+25, 28' RT.
 MANHOLE, TY. A, 5' DIA.
 TY. 1 FRAME, CLOSED LID
 T/G - 653.00
 F.L. - 643.93

LT. & RT. STA. 944+48 TO 952+64
 REMOVE EXISTING GUARDRAIL AND
 TERMINAL END SECTIONS.
 SEE SCHEDULES FOR REMOVAL AND
 REPLACEMENT QUANTITIES.



PLAN

DATE	BY

REVISIONS

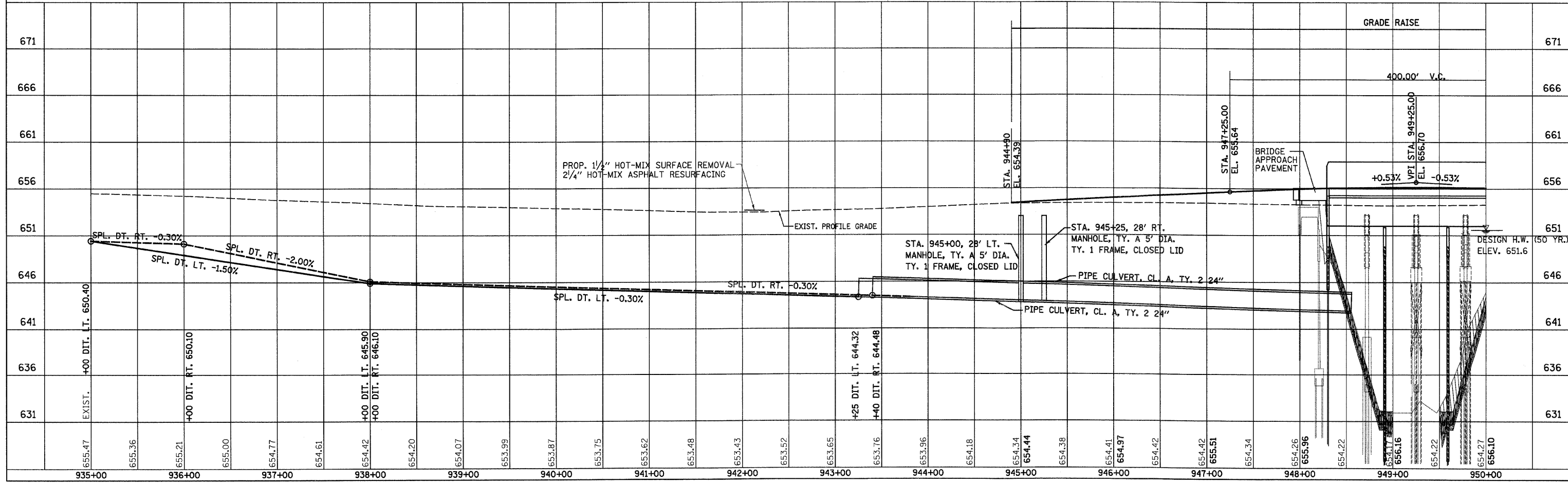
NO.	DESCRIPTION

PROFILE

DATE	BY

REVISIONS

NO.	DESCRIPTION



IL 47 STA. 935+00 TO STA. 950+00