

F.A.P. RTE.	SECTION	COUNTY	TOTAL SHEETS	SHEET NO.
326		LIVINGSTON	354	62
STA. 1175+00		TO STA. 1190+00		
FED. ROAD DIST. NO.		ILLINOIS FED. AID PROJECT		
*(123,123XRS-3,(124)RS-5,(123)BR-3				

LEGEND

- X - TREE REMOVAL
- ▨ - PAVEMENT REMOVAL & CLASS D PATCH
- - - SPECIAL DITCH
- - - STANDARD DITCH
- ▨ - RIPRAP
- ◇ - TEMP. DITCH CHECK

SEE FAP 326 (IL RTE. 47) & 1000 N INTERSECTION DETAIL SHEET AND SIDEROAD DETAIL SHEET FOR ADDITIONAL INFORMATION

SEC. 27, T27N, R7E, 3RD P.M.

SEC. 34, T27N, R7E, 3RD P.M.

LARRY S. FOSDICK, ET UX

ELEANOR DENKER, LIFE ESTATE

JEFFREY GUTWEIN & WENDY GUTWEIN, TRUSTEES

SEC. 28, T27N, R7E, 3RD P.M.

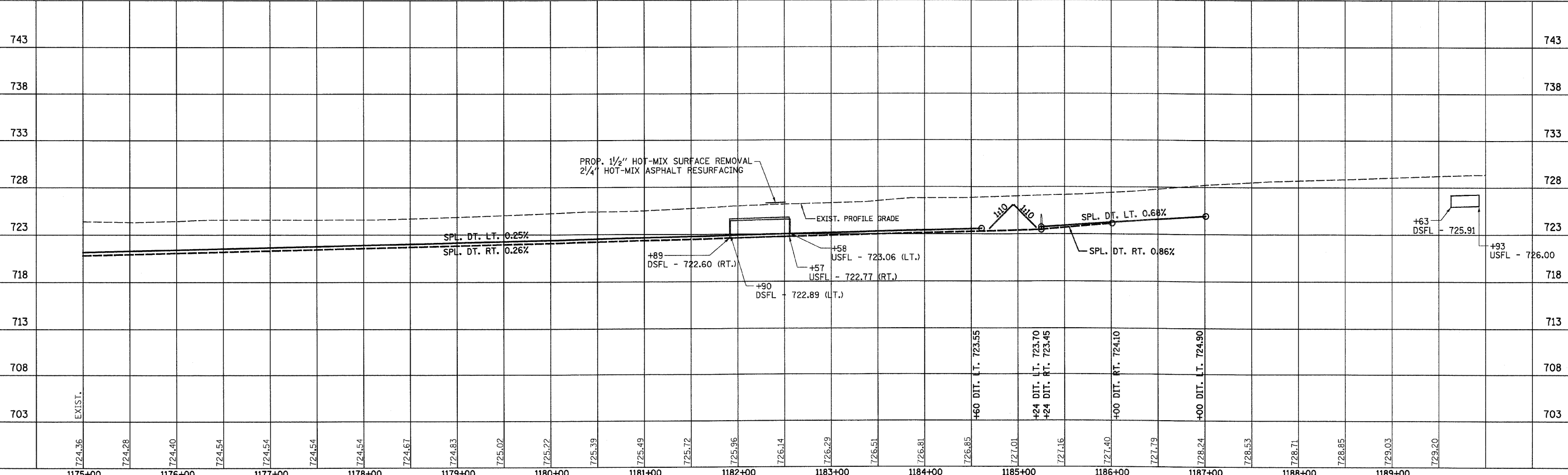
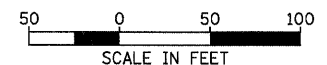
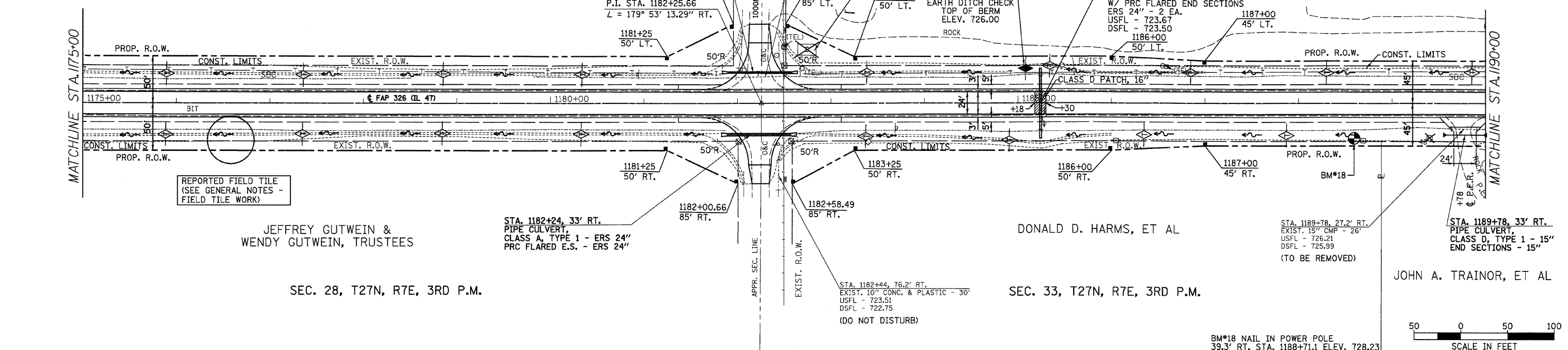
DONALD D. HARMS, ET AL

SEC. 33, T27N, R7E, 3RD P.M.

JOHN A. TRAINOR, ET AL

DATE	
BY	
REVISION	
NO.	
DESCRIPTION	

DATE	
BY	
REVISION	
NO.	
DESCRIPTION	



IL 47 STA. 1175+00 TO STA. 1190+00