

F.A.P. RTE.	SECTION	COUNTY	TOTAL SHEETS	SHEET NO.
326		LIVINGSTON	354	63
STA. 1190+00		TO STA. 1205+00		
FED. ROAD DIST. NO.		ILLINOIS FED. AID PROJECT		
*(123,123)RS-3,(124)RS-5,(123)BR-3				



- LEGEND**
- X - TREE REMOVAL
 - [Hatched Box] - PAVEMENT REMOVAL & CLASS D PATCH
 - [Dashed Line] - SPECIAL DITCH
 - [Wavy Line] - STANDARD DITCH
 - [Cross-hatched Box] - RIPRAP
 - [Diamond] - TEMP. DITCH CHECK

LARRY S. FOSDICK, ET UX

DENNIS HAAB

SEC. 34, T27N, R7E, 3RD P.M.

SEC. 33, T27N, R7E, 3RD P.M.

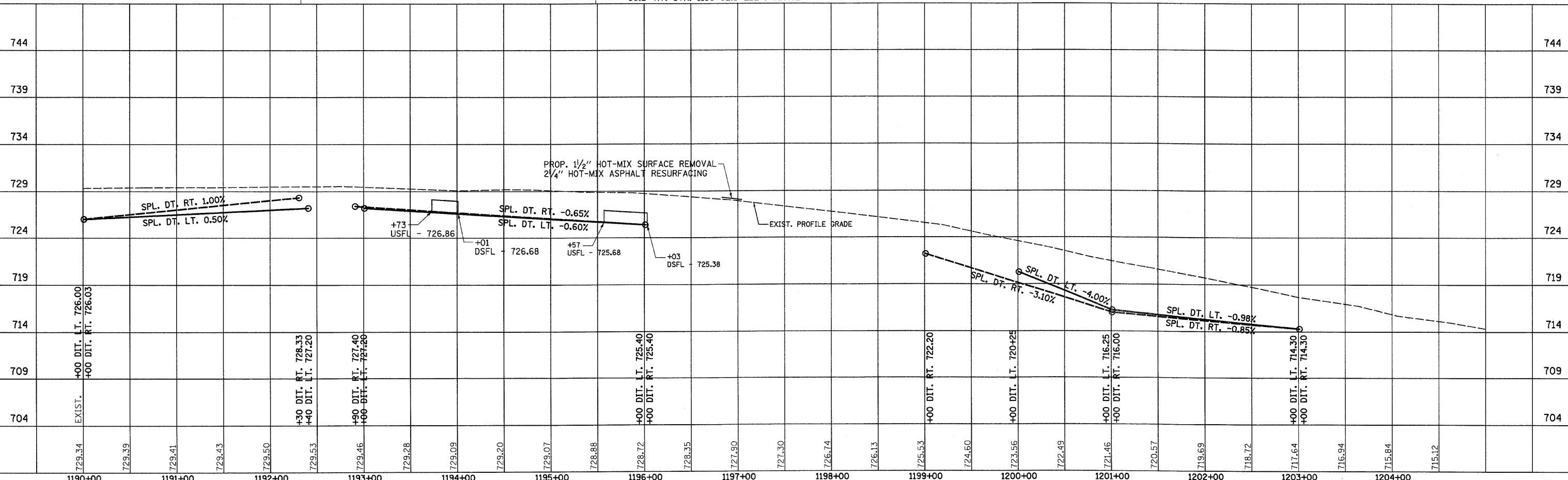
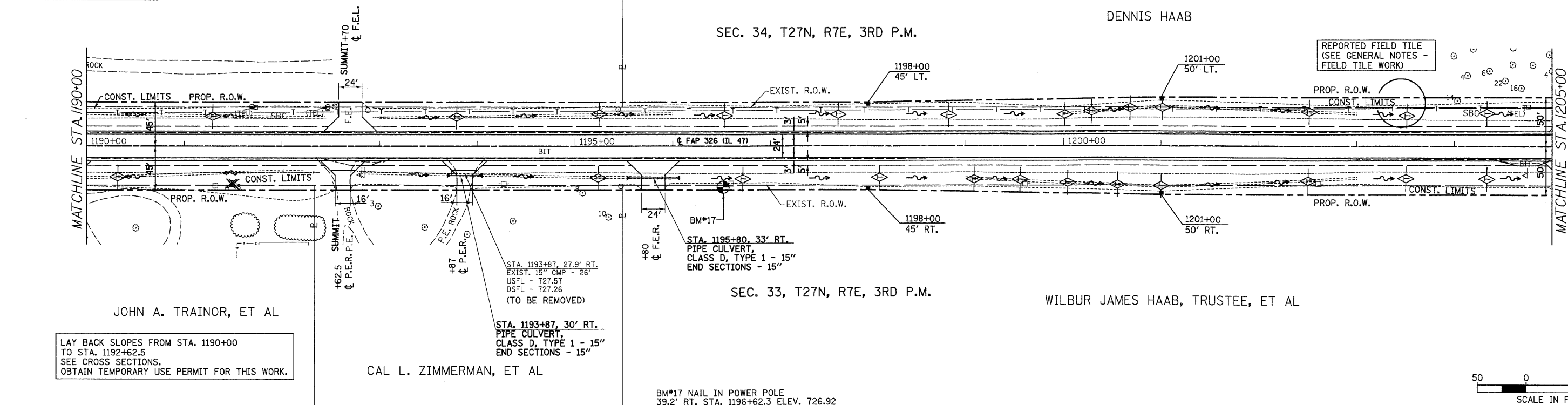
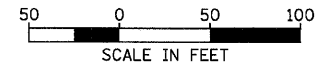
WILBUR JAMES HAAB, TRUSTEE, ET AL

JOHN A. TRAINOR, ET AL

CAL L. ZIMMERMAN, ET AL

LAY BACK SLOPES FROM STA. 1190+00 TO STA. 1192+62.5 SEE CROSS SECTIONS. OBTAIN TEMPORARY USE PERMIT FOR THIS WORK.

BM#17 NAIL IN POWER POLE
39.2' RT. STA. 1196+62.3 ELEV. 726.92



IL 47 STA. 1190+00 TO STA. 1205+00

PLAN

DATE	
BY	
REVIEWED	
NOTED	
NO.	

PROFILE

DATE	
BY	
REVIEWED	
NOTED	
NO.	