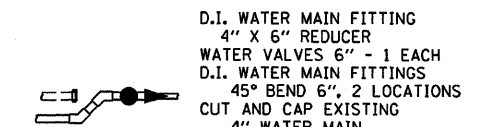
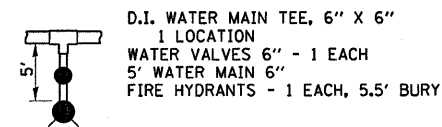


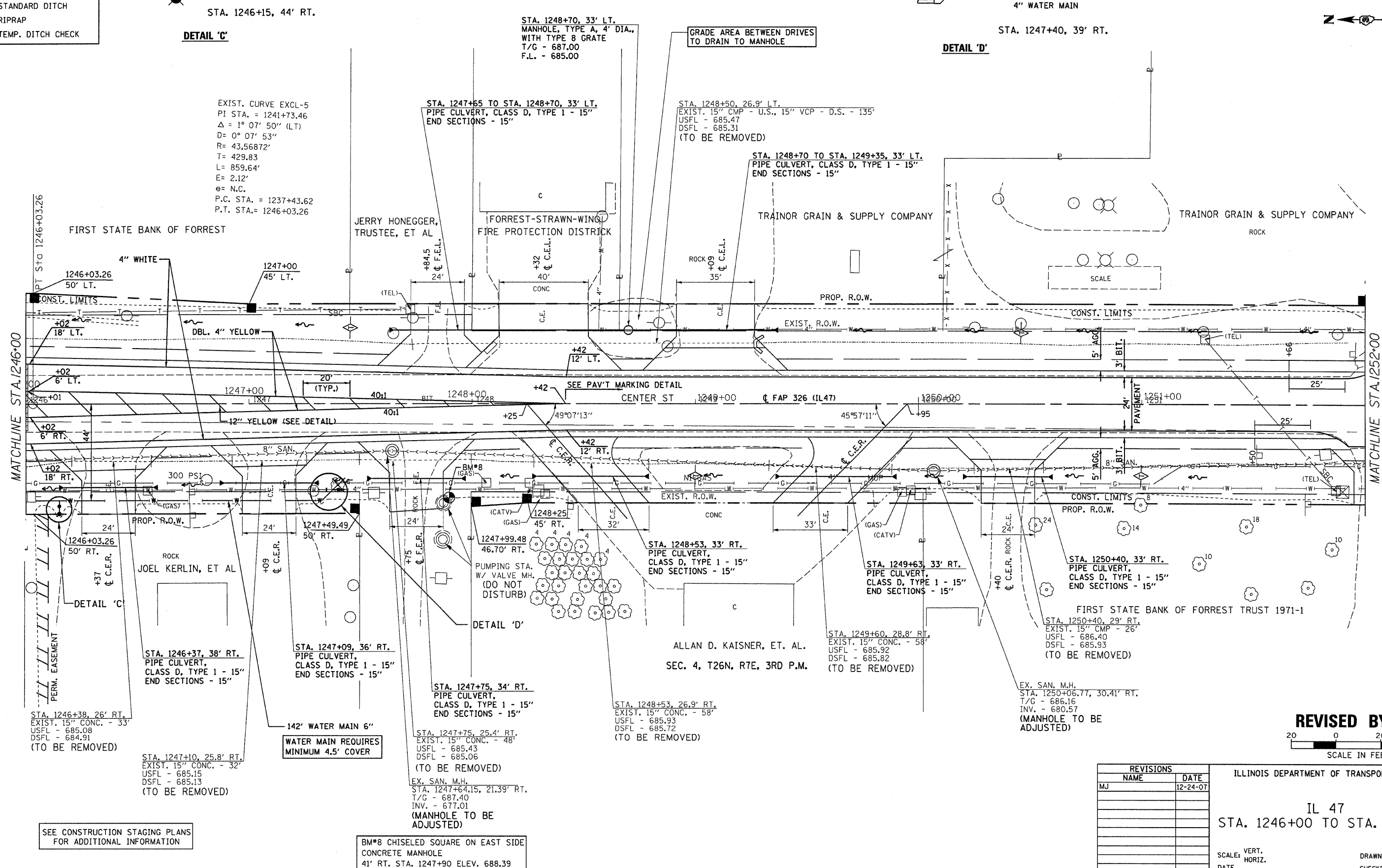
F.A.P. RTE.	SECTION	COUNTY	TOTAL SHEETS	SHEET NO.
326	*	LIVINGSTON	354	70
STA. 1240+00		TO STA. 1246+00		
FED. ROAD DIST. NO.		ILLINOIS FED. AID PROJECT		
*(123,123X)RS-3,(124)RS-5,(123)BR-3				

LEGEND

- X - TREE REMOVAL
- [Hatched Box] - PAVEMENT REMOVAL & CLASS D PATCH
- [Dashed Line] - SPECIAL DITCH
- [Wavy Line] - STANDARD DITCH
- [Cross-hatched Box] - RIPRAP
- [Diamond] - TEMP. DITCH CHECK



SEC. 3, T26N, R7E, 3RD P.M.



EXIST. CURVE EXCL-5
PI STA. = 1241+73.46
Δ = 1° 07' 50" (LT)
D = 0° 07' 53"
R = 43,56872'
T = 429.83
L = 859.64'
E = 2.12'
e = N.C.
P.C. STA. = 1237+43.62
P.T. STA. = 1246+03.26

GRADE AREA BETWEEN DRIVES
TO DRAIN TO MANHOLE

DETAIL 'D'

REVISED BY IDOT
SCALE IN FEET
0 20 40

REVISIONS	
NAME	DATE
MJ	12-24-07

ILLINOIS DEPARTMENT OF TRANSPORTATION
IL 47
STA. 1246+00 TO STA. 1252+00

SCALE: VERT. HORIZ.
DATE: DRAWN BY: CHECKED BY:

REVISED 12-24-07 MJ IL 47 STA. 1246+00 TO STA. 1252+00

K:\110127\geocak\PicsSheet20.dgn

SEE CONSTRUCTION STAGING PLANS FOR ADDITIONAL INFORMATION

BM#8 CHISELED SQUARE ON EAST SIDE CONCRETE MANHOLE
41' RT. STA. 1247+90 ELEV. 688.39

WATER MAIN REQUIRES MINIMUM 4.5' COVER

EX. SAN. M.H.
STA. 1247+64.15, 21.39' RT.
T/G - 687.40
INV. - 677.01
(MANHOLE TO BE ADJUSTED)

STA. 1247+75, 34' RT.
PIPE CULVERT,
CLASS D, TYPE 1 - 15"
END SECTIONS - 15"

STA. 1248+53, 26.9' RT.
EXIST. 15" CONC. - 58'
USFL - 685.93
DSFL - 685.72
(TO BE REMOVED)

STA. 1249+60, 28.8' RT.
EXIST. 15" CONC. - 58'
USFL - 685.92
DSFL - 685.82
(TO BE REMOVED)

STA. 1250+40, 29' RT.
EXIST. 15" CMP - 26'
USFL - 686.40
DSFL - 685.93
(TO BE REMOVED)

STA. 1250+40, 33' RT.
PIPE CULVERT,
CLASS D, TYPE 1 - 15"
END SECTIONS - 15"

STA. 1249+63, 33' RT.
PIPE CULVERT,
CLASS D, TYPE 1 - 15"
END SECTIONS - 15"

STA. 1248+53, 33' RT.
PIPE CULVERT,
CLASS D, TYPE 1 - 15"
END SECTIONS - 15"

STA. 1247+99.48
46.70' RT.
PUMPING STA.
W/ VALVE MH.
(DO NOT DISTURB)

STA. 1247+09, 36' RT.
PIPE CULVERT,
CLASS D, TYPE 1 - 15"
END SECTIONS - 15"

STA. 1246+37, 38' RT.
PIPE CULVERT,
CLASS D, TYPE 1 - 15"
END SECTIONS - 15"

STA. 1246+38, 26' RT.
EXIST. 15" CONC. - 33'
USFL - 685.08
DSFL - 684.91
(TO BE REMOVED)

STA. 1247+10, 25.8' RT.
EXIST. 15" CONC. - 32'
USFL - 685.15
DSFL - 685.13
(TO BE REMOVED)