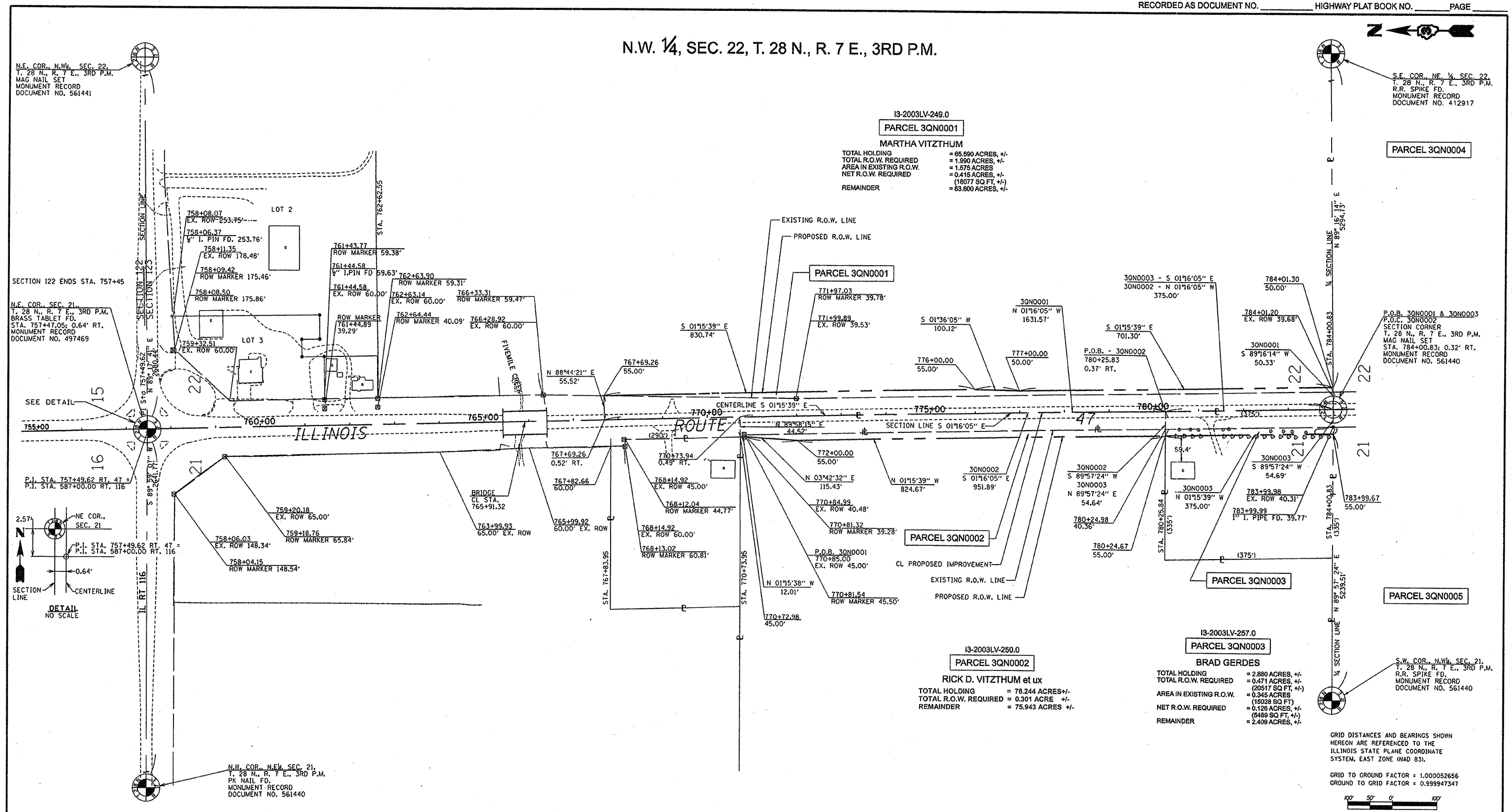


N.W. 1/4, SEC. 22, T. 28 N., R. 7 E., 3RD P.M.



13-2003LV-249.0
PARCEL 3QN0001
MARTHA VITZTHUM
TOTAL HOLDING = 65.690 ACRES +/-
TOTAL R.O.W. REQUIRED = 1.990 ACRES +/-
AREA IN EXISTING R.O.W. = 1.575 ACRES
NET R.O.W. REQUIRED = 0.415 ACRES +/-
(18077 SQ. FT. +/-)
REMAINDER = 63.600 ACRES +/-

PARCEL 3QN0004

13-2003LV-250.0
PARCEL 3QN0002
RICK D. VITZTHUM et ux
TOTAL HOLDING = 76.244 ACRES +/-
TOTAL R.O.W. REQUIRED = 0.301 ACRE +/-
REMAINDER = 75.943 ACRES +/-

13-2003LV-257.0
PARCEL 3QN0003
BRAD GERDES
TOTAL HOLDING = 2.880 ACRES +/-
TOTAL R.O.W. REQUIRED = 0.471 ACRES +/-
AREA IN EXISTING R.O.W. = 0.345 ACRES
(16028 SQ. FT.)
NET R.O.W. REQUIRED = 0.126 ACRES +/-
(5489 SQ. FT. +/-)
REMAINDER = 2.409 ACRES +/-

S.W. COR., N.W. 1/4, SEC. 21,
T. 28 N., R. 7 E., 3RD P.M.
R.R. SPIKE FD.
MONUMENT RECORD
DOCUMENT NO. 561440

N.E. COR., N.W. 1/4, SEC. 22,
T. 28 N., R. 7 E., 3RD P.M.
MAG NAIL SET
MONUMENT RECORD
DOCUMENT NO. 561441

S.E. COR., NE 1/4, SEC. 22,
T. 28 N., R. 7 E., 3RD P.M.
R.R. SPIKE FD.
MONUMENT RECORD
DOCUMENT NO. 412917

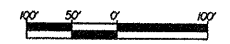
N.E. COR., SEC. 21,
T. 28 N., R. 7 E., 3RD P.M.
BRASS TABLET FD.
STA. 757+47.05; 0.64' RT.
MONUMENT RECORD
DOCUMENT NO. 497469

P.O.B. 30N0001 & 30N0003
P.O.C. 30N0002
SECTION CORNER
T. 28 N., R. 7 E., 3RD P.M.
MAG NAIL SET
STA. 784+00.83; 0.32' RT.
MONUMENT RECORD
DOCUMENT NO. 561440

NE COR., SEC. 21
P.I. STA. 757+49.62 RT. 47 =
P.I. STA. 587+00.00 RT. 116 =
0.64'

GRID DISTANCES AND BEARINGS SHOWN
HEREON ARE REFERENCED TO THE
ILLINOIS STATE PLANE COORDINATE
SYSTEM, EAST ZONE (NAD 83).

GRID TO GROUND FACTOR = 1.000052656
GROUND TO GRID FACTOR = 0.999947347



I, MICHAEL E. RAPIER, HEREBY CERTIFY THAT I AM A LICENSED PROFESSIONAL LAND SURVEYOR OF THE STATE OF ILLINOIS, THAT THE SURVEY OF FAP 326 (IL ROUTE 47) WAS MADE BY MICHAEL E. RAPIER SURVEYING, INC. UNDER MY DIRECTION, AND THAT THIS PLAT IS A CORRECT REPRESENTATION OF SAID SURVEY TO THE BEST OF MY KNOWLEDGE AND BELIEF, THAT ALL MONUMENTS AND MARKS ARE OF THE CHARACTER AND OCCUPY THE POSITION SHOWN THEREON AND ARE SUFFICIENT TO ENABLE THE SURVEY TO BE RETRACED.

"THIS PROFESSIONAL SERVICE CONFORMS TO THE CURRENT ILLINOIS MINIMUM STANDARDS FOR A BOUNDARY SURVEY"
MICHAEL E. RAPIER
2917
SPRINGFIELD,
ILLINOIS
8-29-2006
ILLINOIS PROFESSIONAL LAND SURVEYOR NO. 2917
EXPIRES: NOV. 30, 2006



N.E. 1/4, SEC. 21, T. 28 N., R. 7 E., 3RD P.M.

RIGHT OF WAY PLANS
ROUTE: F.A.P. 326 (IL ROUTE 47)
SECTION: (123,123X)RS-3, (124)RS-5 & (123)BR-3
PROJECT:
COUNTY: LIVINGSTON
JOB NO.: R-93-003-01
STA. 757+49.62 TO STA. 784+00.83
SCALE 1" = 100'