

S.W. 1/4, SEC. 22, T. 28 N., R. 7 E., 3RD P.M.



N.E. COR., S.E. SEC. 22,
T. 28 N., R. 7 E., 3RD P.M.
R.R. SPIKE F.D.
MONUMENT RECORD
DOCUMENT NO. 412917

13-2003LV-259.0
PARCEL 3QN0004

CLAUDE H. WATTS, JR.
TOTAL HOLDING = 77.540 ACRES, +/-
TOTAL R.O.W. REQUIRED = 1.648 ACRES, +/-
AREA IN EXISTING R.O.W. = 1.218 ACRES
NET R.O.W. REQUIRED = 0.432 ACRES, +/-
(18818 SQ FT, +/-)
REMAINDER = 75.892 ACRES, +/-

13-2003LV-259.0
PARCEL 3QN0006

R. J. LANNON, TRUSTEE
TOTAL HOLDING = 702.800 ACRES, +/-
TOTAL R.O.W. REQUIRED = 12.283 ACRES, +/-
TOTAL AREA IN EXISTING R.O.W. = 9.884 ACRES
TOTAL NET R.O.W. REQUIRED = 2.619 ACRES, +/-
REMAINDER = 690.617 ACRES, +/-

TRACT #1 = 12.196 ACRES, +/-
= 9.884 ACRES
= 2.532 ACRES, +/-
TRACT #2 = 0.087 ACRES, +/- (3797 SQ FT, +/-)
= 0.087 ACRES, +/- (3797 SQ FT, +/-)
TEMPORARY EASEMENT = 1125 SQ FT, +/-

S.E. COR., S.W. SEC. 22,
T. 28 N., R. 7 E., 3RD P.M.
IP W/ CAP SET
MONUMENT RECORD
DOCUMENT NO. 561441

PARCEL 3QN0006

PARCEL 3QN0001

P.O.B. 30N0004 & 30N0005
SECTION CORNER
T. 28 N., R. 7 E., 3RD P.M.
MAG NAIL SET
STA. 784+00.83, 0.32' RT.
MONUMENT RECORD
DOCUMENT NO. 561440

PARCEL 3QN0004

PARCEL 3QN0006
TRACT #1

P.O.B. 30N0006
TRACT #1 & TRACT #2
SECTION CORNER
T. 28 N., R. 7 E., 3RD P.M.
BRASS TABLET F.D.
P.I. STA. 810+48.73, 0.00' RT.
MONUMENT RECORD
DOCUMENT NO. 464221

PARCEL 3QN0006

PARCEL 3QN0003

13-2003LV-251.0
PARCEL 3QN0005

MCPART, LLC
TOTAL HOLDING = 80.000 ACRES, +/-
TOTAL R.O.W. REQUIRED = 1.684 ACRES, +/-
AREA IN EXISTING R.O.W. = 1.215 ACRES
NET R.O.W. REQUIRED = 0.449 ACRES, +/-
(19558 SQ FT, +/-)
REMAINDER = 78.336 ACRES, +/-

13-2003LV-250.0
PARCEL 3QN0006

R. J. LANNON, TRUSTEE

PARCEL 3QN0002

N.W. COR., S.W. SEC. 21,
T. 28 N., R. 7 E., 3RD P.M.
R.R. SPIKE F.D.
MONUMENT RECORD
DOCUMENT NO. 561440

I, MICHAEL E. RAPIER, HEREBY CERTIFY THAT I AM A LICENSED PROFESSIONAL LAND SURVEYOR OF THE STATE OF ILLINOIS, THAT THE SURVEY OF FAP 326 (IL ROUTE 47) WAS MADE BY MICHAEL E. RAPIER SURVEYING, INC. UNDER MY DIRECTION, AND THAT THIS PLAT IS A CORRECT REPRESENTATION OF SAID SURVEY TO THE BEST OF MY KNOWLEDGE AND BELIEF, THAT ALL MONUMENTS AND MARKS ARE OF THE CHARACTER AND OCCUPY THE POSITION SHOWN THEREON AND ARE SUFFICIENT TO ENABLE THE SURVEY TO BE RETRACED.

"THIS PROFESSIONAL SERVICE CONFORMS TO THE CURRENT ILLINOIS MINIMUM STANDARDS FOR A BOUNDARY SURVEY"
MICHAEL E. RAPIER
2917
SPRINGFIELD,
ILLINOIS
ILLINOIS PROFESSIONAL LAND SURVEYOR NO. 2917
EXPIRES: NOV. 30, 2008



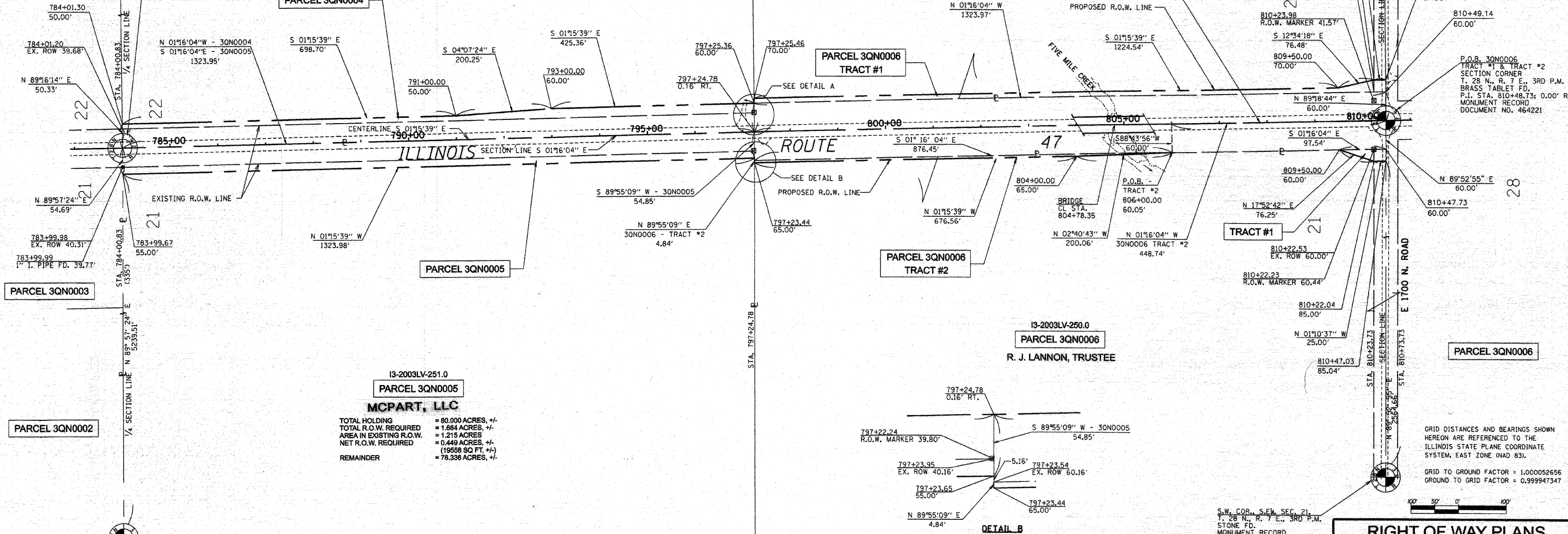
S.E. 1/4, SEC. 21, T. 28 N., R. 7 E., 3RD P.M.

RIGHT OF WAY PLANS
ROUTE: F.A.P. 326 (IL ROUTE 47)
SECTION: (123,123X)RS-3, (124)RS-5 & (123)BR-3
PROJECT:
COUNTY: LIVINGSTON
JOB NO.: R-93-003-01
STA. 784+00.83 TO STA. 810+48.73
SCALE 1" = 100'
SHEET NO. 2 OF 23

S.W. COR., S.E. SEC. 21,
T. 28 N., R. 7 E., 3RD P.M.
STONE F.D.
MONUMENT RECORD
DOCUMENT NO. 561440



GRID DISTANCES AND BEARINGS SHOWN
HEREON ARE REFERENCED TO THE
ILLINOIS STATE PLANE COORDINATE
SYSTEM, EAST ZONE (NAD 83).
GRID TO GROUND FACTOR = 1.000052656
GROUND TO GRID FACTOR = 0.999947347



DETAIL A

DETAIL B

21
22
28