

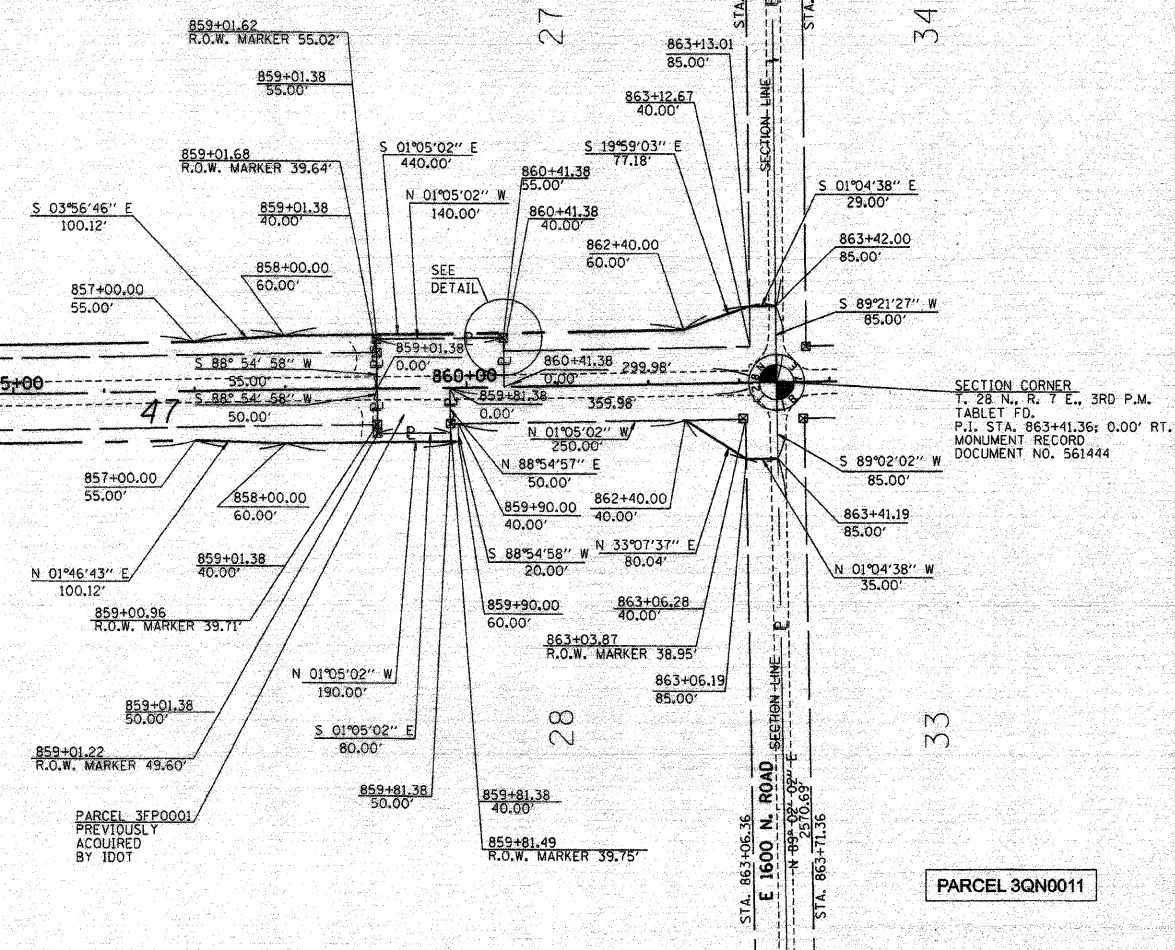
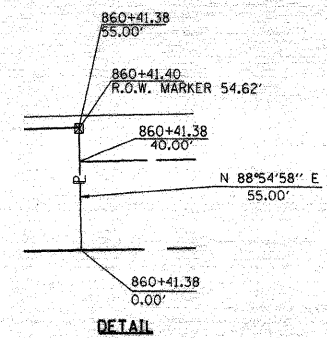
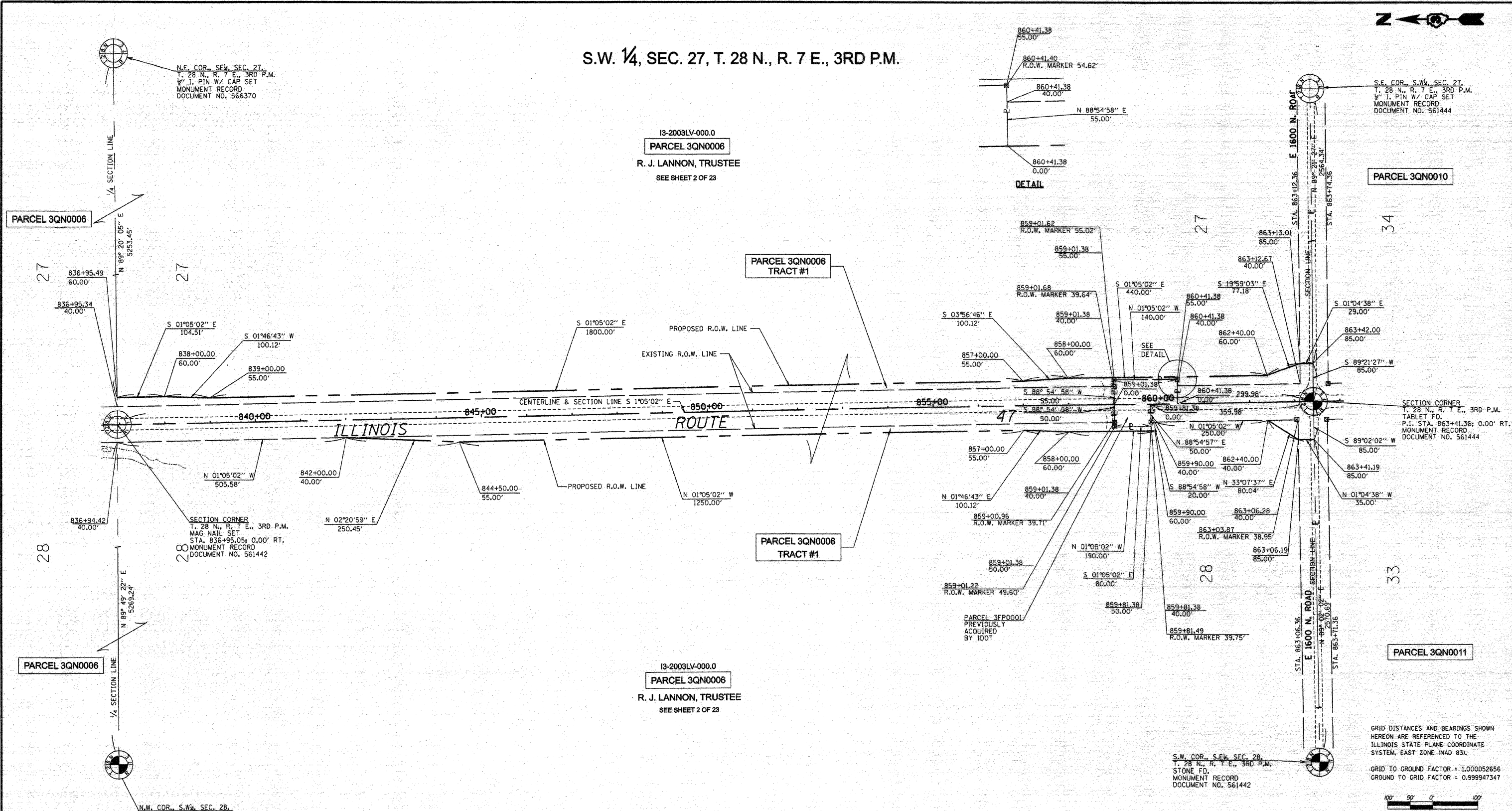


S.W. 1/4, SEC. 27, T. 28 N., R. 7 E., 3RD P.M.

13-2003LV-000.0
PARCEL 3QN0006
R. J. LANNON, TRUSTEE
SEE SHEET 2 OF 23

13-2003LV-000.0
PARCEL 3QN0006
R. J. LANNON, TRUSTEE
SEE SHEET 2 OF 23

S.E. 1/4, SEC. 28, T. 28 N., R. 7 E., 3RD P.M.



N.E. COR., S.W. SEC. 27,
T. 28 N., R. 7 E., 3RD P.M.
1/4 PIN W/ CAP SET
MONUMENT RECORD
DOCUMENT NO. 566370

S.E. COR., S.W. SEC. 27,
T. 28 N., R. 7 E., 3RD P.M.
1/4 PIN W/ CAP SET
MONUMENT RECORD
DOCUMENT NO. 561444

SECTION CORNER
T. 28 N., R. 7 E., 3RD P.M.
MAG NAIL SET
STA. 836+95.05; 0.00' RT.
MONUMENT RECORD
DOCUMENT NO. 561442

SECTION CORNER
T. 28 N., R. 7 E., 3RD P.M.
TABLET FD.
P.1 STA. 863+41.36; 0.00' RT.
MONUMENT RECORD
DOCUMENT NO. 561444

N.W. COR., S.W. SEC. 28,
T. 28 N., R. 7 E., 3RD P.M.
1/4 PIN W/ CAP SET
MONUMENT RECORD
DOCUMENT NO. 561442

S.W. COR., S.E. SEC. 28,
T. 28 N., R. 7 E., 3RD P.M.
STONE FD.
MONUMENT RECORD
DOCUMENT NO. 561442

GRID DISTANCES AND BEARINGS SHOWN
HEREON ARE REFERENCED TO THE
ILLINOIS STATE PLANE COORDINATE
SYSTEM, EAST ZONE (NAD 83).

GRID TO GROUND FACTOR = 1.000052656
GROUND TO GRID FACTOR = 0.999947347



RIGHT OF WAY PLANS

ROUTE: F.A.P. 328 (IL ROUTE 47)
SECTION: (123,123X)RS-3, (124)RS-5 & (123)BR-3
PROJECT:
COUNTY: LIVINGSTON
JOB NO.: R-93-003-01
STA. 836+95.05 TO STA. 863+41.36
SCALE 1" = 100'

I, MICHAEL E. RAPIER, HEREBY CERTIFY THAT I AM A LICENSED PROFESSIONAL LAND SURVEYOR OF THE STATE OF ILLINOIS, THAT THE SURVEY OF FAP 328 (IL ROUTE 47) WAS MADE BY MICHAEL E. RAPIER SURVEYING, INC. UNDER MY DIRECTION, AND THAT THIS PLAT IS A CORRECT REPRESENTATION OF SAID SURVEY TO THE BEST OF MY KNOWLEDGE AND BELIEF, THAT ALL MONUMENTS AND MARKS ARE OF THE CHARACTER AND OCCUPY THE POSITION SHOWN THEREON AND ARE SUFFICIENT TO ENABLE THE SURVEY TO BE RETRACED.

"THIS PROFESSIONAL SERVICE CONFORMS TO THE CURRENT ILLINOIS MINIMUM STANDARDS FOR A BOUNDARY SURVEY"
MICHAEL E. RAPIER
2917
SPRINGFIELD
ILLINOIS
8-29-2006
ILLINOIS PROFESSIONAL LAND SURVEYOR NO. 2917
EXPIRES: NOV.30, 2008

