

S.W. 1/4, SEC. 34, T. 28 N., R. 7 E., 3RD P.M.



N.E. COR., S.W. SEC. 34,
T. 28 N., R. 7 E., 3RD P.M.
1/4" I. PIN W/ CAP SET
MONUMENT RECORD
DOCUMENT NO. 561444

S.E. COR., S.W. SEC. 34,
T. 28 N., R. 7 E., 3RD P.M.
1/4" I. PIN W/ CAP SET
MONUMENT RECORD
DOCUMENT NO. 561444

N.E. COR., N.W. SEC. 33,
T. 27 N., R. 7 E., 3RD P.M.
1/4" I. PIN W/ CAP SET
MONUMENT RECORD
DOCUMENT NO. 561430

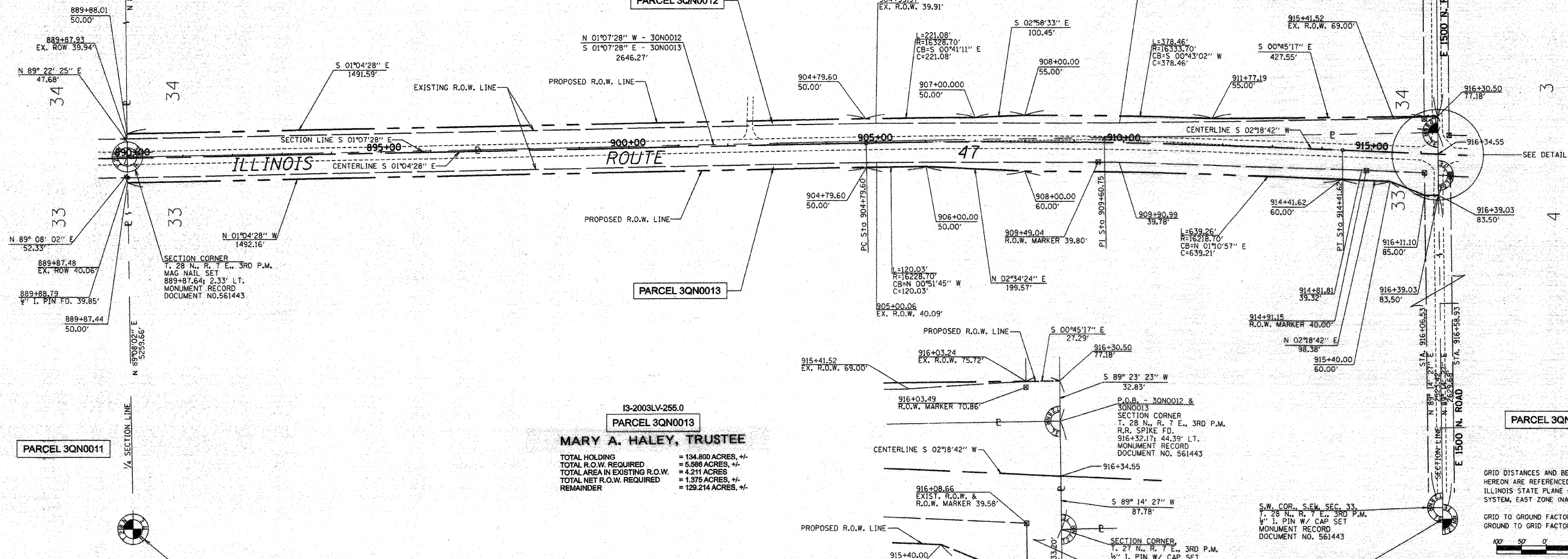
PARCEL 3QN0010

13-2003LV-256.0
PARCEL 3QN0012

EVELYN FOX SHAUFLER
TOTAL HOLDING = 120.830 ACRES, +/-
TOTAL R.O.W. REQUIRED = 2.874 ACRES, +/-
AREA IN EXISTING R.O.W. = 2.087 ACRES, +/-
NET R.O.W. REQUIRED = 0.587 ACRES, +/-
(26570 SQ. FT. +/-)
REMAINDER = 118.156 ACRES, +/-

PARCEL 3QN0014

CURVE DATA
PI STA. = 909+60.75
Δ = 3° 23' 10" (RT)
D = 0° 21' 07"
R = 16,278.70'
T = 481.15'
L = 962.02'
E = 7.11'
P.C. STA. = 904+79.60
P.T. STA. = 914+41.62



SECTION CORNER
T. 28 N., R. 7 E., 3RD P.M.
MAG NAIL SET
889+87.64; 2.33' LT.
MONUMENT RECORD
DOCUMENT NO. 561443

SECTION CORNER
T. 28 N., R. 7 E., 3RD P.M.
R.R. SPIKE FD.
916+32.17; 44.39' LT.
MONUMENT RECORD
DOCUMENT NO. 561443

SECTION CORNER
T. 27 N., R. 7 E., 3RD P.M.
1/4" I. PIN W/ CAP SET
916+36.87; 43.26' RT.
MONUMENT RECORD
DOCUMENT NO. 561443

SECTION CORNER
T. 27 N., R. 7 E., 3RD P.M.
R.R. SPIKE FD.
MONUMENT RECORD
DOCUMENT NO. 566369

13-2003LV-256.0
PARCEL 3QN0013
MARY A. HALEY, TRUSTEE
TOTAL HOLDING = 134.800 ACRES, +/-
TOTAL R.O.W. REQUIRED = 5.588 ACRES, +/-
TOTAL AREA IN EXISTING R.O.W. = 4.211 ACRES
TOTAL NET R.O.W. REQUIRED = 1.375 ACRES, +/-
REMAINDER = 129.214 ACRES, +/-

GRID DISTANCES AND BEARINGS SHOWN
HEREON ARE REFERENCED TO THE
ILLINOIS STATE PLANE COORDINATE
SYSTEM, EAST ZONE (NAD 83).

GRID TO GROUND FACTOR = 1.000052656
GROUND TO GRID FACTOR = 0.999947347



I, MICHAEL E. RAPIER, HEREBY CERTIFY THAT I AM A LICENSED PROFESSIONAL LAND SURVEYOR OF THE STATE OF ILLINOIS, THAT THE SURVEY OF FAP 326 (IL ROUTE 47) WAS MADE BY MICHAEL E. RAPIER SURVEYING, INC. UNDER MY DIRECTION, AND THAT THIS PLAT IS A CORRECT REPRESENTATION OF SAID SURVEY TO THE BEST OF MY KNOWLEDGE AND BELIEF, THAT ALL MONUMENTS AND MARKS ARE OF THE CHARACTER AND OCCUPY THE POSITION SHOWN THEREON AND ARE SUFFICIENT TO ENABLE THE SURVEY TO BE RETRACED.

"THIS PROFESSIONAL SERVICE CONFORMS TO THE CURRENT ILLINOIS MINIMUM STANDARDS FOR A BOUNDARY SURVEY"
MICHAEL E. RAPIER
8-29-2006
ILLINOIS PROFESSIONAL LAND SURVEYOR NO. 2917
EXPIRES NOV. 30, 2008



S.E. 1/4, SEC. 33, T. 28 N., R. 7 E., 3RD P.M.

RIGHT OF WAY PLANS
ROUTE: F.A.P. 326 (IL ROUTE 47)
SECTION: (123,123X)RS-3, (124)RS-5 & (123)BR-3
PROJECT:
COUNTY: LIVINGSTON
JOB NO.: R-93-003-01
STA. 889+87.64 TO STA. 916+34.55
SCALE 1" = 100'
SHEET NO. 6 OF 23