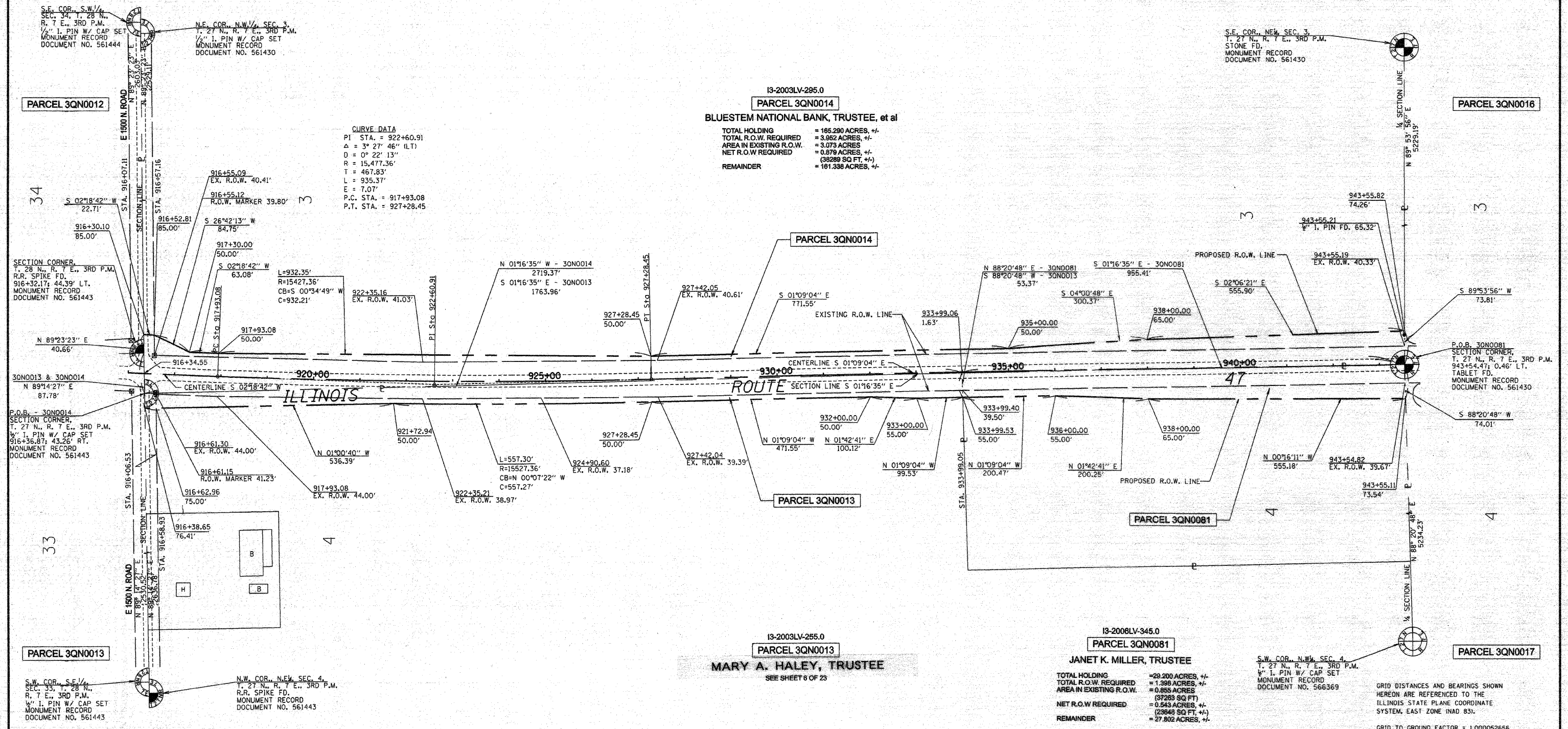


N.W. 1/4, SEC. 3, T. 27 N., R. 7 E., 3RD P.M.



S.E. COR. S.W. 1/4, SEC. 34, T. 28 N., R. 7 E., 3RD P.M. 1/4" I. PIN W/ CAP SET MONUMENT RECORD DOCUMENT NO. 561444

N.E. COR. N.W. 1/4, SEC. 3, T. 27 N., R. 7 E., 3RD P.M. 1/4" I. PIN W/ CAP SET MONUMENT RECORD DOCUMENT NO. 561430

S.E. COR. N.E. SEC. 3, T. 27 N., R. 7 E., 3RD P.M. STONE FD. MONUMENT RECORD DOCUMENT NO. 561430

SECTION CORNER, T. 28 N., R. 7 E., 3RD P.M. R.R. SPIKE FD. 916+32.17; 44.39' LT. MONUMENT RECORD DOCUMENT NO. 561443

P.O.B. - 30N0014 SECTION CORNER, T. 27 N., R. 7 E., 3RD P.M. 1/4" I. PIN W/ CAP SET 916+36.87; 43.26' RT. MONUMENT RECORD DOCUMENT NO. 561443

P.O.B. 30N0081 SECTION CORNER, T. 27 N., R. 7 E., 3RD P.M. 943+54.47; 0.46' LT. TABLET FD. MONUMENT RECORD DOCUMENT NO. 561430

ILLINOIS

ROUTE 47

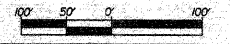
PARCEL 3QN0081

S.W. COR. S.E. 1/4, SEC. 33, T. 28 N., R. 7 E., 3RD P.M. 1/4" I. PIN W/ CAP SET MONUMENT RECORD DOCUMENT NO. 561443

N.W. COR. N.E. SEC. 4, T. 27 N., R. 7 E., 3RD P.M. R.R. SPIKE FD. MONUMENT RECORD DOCUMENT NO. 561443

S.W. COR. N.W. SEC. 4, T. 27 N., R. 7 E., 3RD P.M. 1/4" I. PIN W/ CAP SET MONUMENT RECORD DOCUMENT NO. 566369

GRID DISTANCES AND BEARINGS SHOWN HEREON ARE REFERENCED TO THE ILLINOIS STATE PLANE COORDINATE SYSTEM, EAST ZONE (NAD 83).  
GRID TO GROUND FACTOR = 1.000052656  
GROUND TO GRID FACTOR = 0.999947347



RIGHT OF WAY PLANS

ROUTE: F.A.P. 326 (IL ROUTE 47)  
SECTION: (123,123)RS-3, (124)RS-5 & (123)BR-3  
PROJECT:  
COUNTY: LIVINGSTON  
JOB NO.: R-93-003-01  
STA. 916+34.55 TO STA. 943+54.47  
SCALE 1" = 100'

I, MICHAEL E. RAPIER, HEREBY CERTIFY THAT I AM A LICENSED PROFESSIONAL LAND SURVEYOR OF THE STATE OF ILLINOIS, THAT THE SURVEY OF FAP 326 (IL ROUTE 47) WAS MADE BY MICHAEL E. RAPIER SURVEYING, INC. UNDER MY DIRECTION, AND THAT THIS PLAT IS A CORRECT REPRESENTATION OF SAID SURVEY TO THE BEST OF MY KNOWLEDGE AND BELIEF, THAT ALL MONUMENTS AND MARKS ARE OF THE CHARACTER AND OCCUPY THE POSITION SHOWN THEREON AND ARE SUFFICIENT TO ENABLE THE SURVEY TO BE RETRACED.

"THIS PROFESSIONAL SERVICE CONFORMS TO THE CURRENT ILLINOIS MINIMUM STANDARDS FOR A BOUNDARY SURVEY"  
MICHAEL E. RAPIER 8-29-2006  
ILLINOIS PROFESSIONAL LAND SURVEYOR NO. 2817  
EXPIRES: NOV. 30, 2008



N.E. 1/4, SEC. 4, T. 27 N., R. 7 E., 3RD P.M.