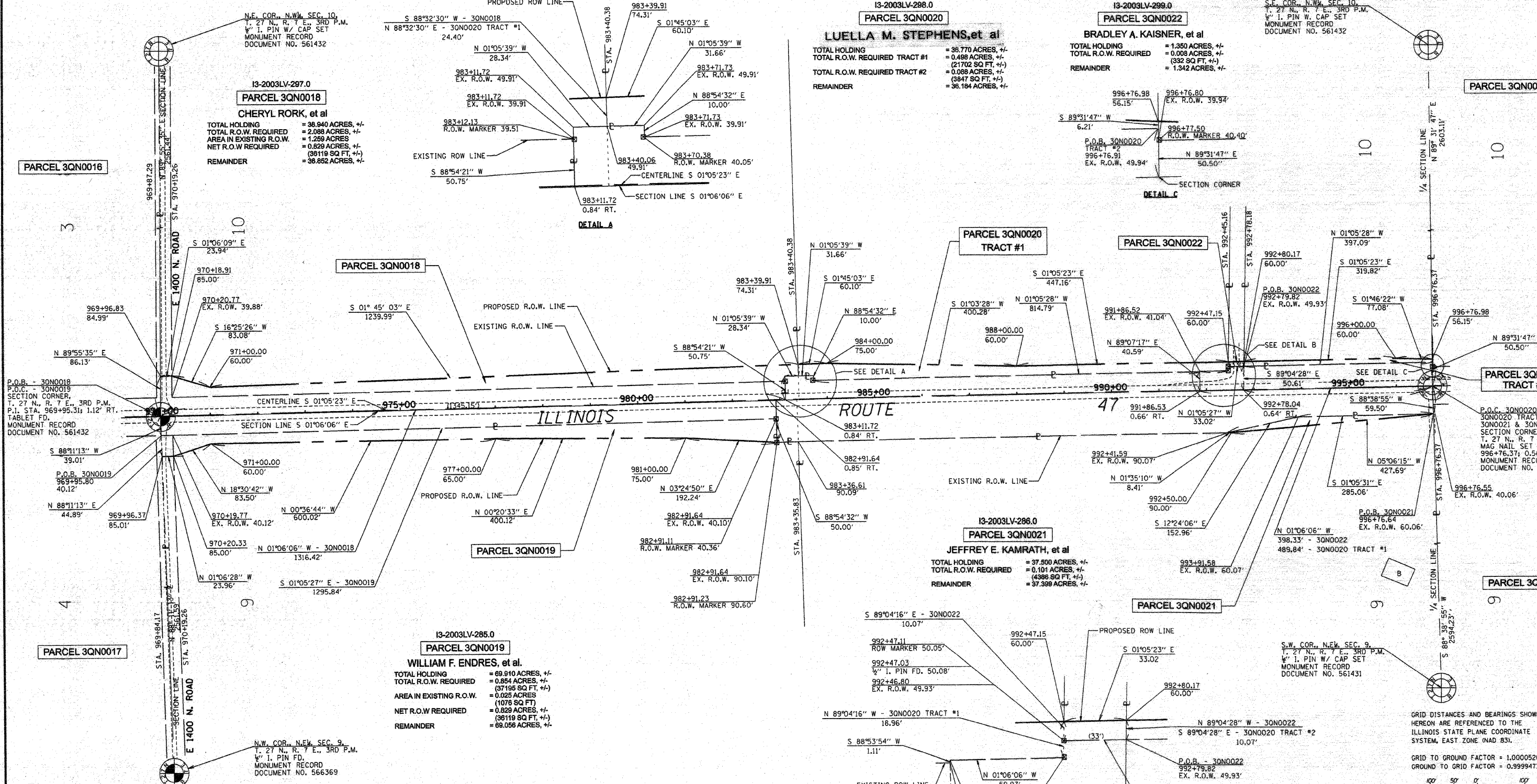


N.W. 1/4, SEC. 10, T. 27 N., R. 7 E., 3RD P.M.



13-2003LV-297.0
PARCEL 3QN0018
CHERYL RORK, et al
 TOTAL HOLDING = 38.940 ACRES, +/-
 TOTAL R.O.W. REQUIRED = 2.088 ACRES, +/-
 AREA IN EXISTING R.O.W. = 1.259 ACRES
 NET R.O.W. REQUIRED = 0.829 ACRES, +/-
 (36119 SQ FT, +/-)
 REMAINDER = 36.862 ACRES, +/-

13-2003LV-298.0
PARCEL 3QN0020
LUELLA M. STEPHENS, et al
 TOTAL HOLDING = 36.770 ACRES, +/-
 TOTAL R.O.W. REQUIRED TRACT #1 = 0.488 ACRES, +/-
 (21702 SQ FT, +/-)
 TOTAL R.O.W. REQUIRED TRACT #2 = 0.088 ACRES, +/-
 (3847 SQ FT, +/-)
 REMAINDER = 36.184 ACRES, +/-

13-2003LV-299.0
PARCEL 3QN0022
BRADLEY A. KAISNER, et al
 TOTAL HOLDING = 1.350 ACRES, +/-
 TOTAL R.O.W. REQUIRED = 0.008 ACRES, +/-
 (332 SQ FT, +/-)
 REMAINDER = 1.342 ACRES, +/-

S.E. COR., N.W. SEC. 10,
 T. 27 N., R. 7 E., 3RD P.M.
 1/4" I. PIN W/ CAP SET
 MONUMENT RECORD
 DOCUMENT NO. 561432

P.O.B. - 30N0018
 SECTION CORNER,
 T. 27 N., R. 7 E., 3RD P.M.
 P.I. STA. 969+95.31; 1.12' RT.
 TABLET FD
 MONUMENT RECORD
 DOCUMENT NO. 561432

P.O.C. 30N0020 TRACT #1,
 30N0020 TRACT #2,
 30N0021 & 30N0022
 SECTION CORNER,
 T. 27 N., R. 7 E., 3RD P.M.
 MAG NAIL SET
 996+76.37; 0.56' RT.
 MONUMENT RECORD
 DOCUMENT NO. 561431

13-2003LV-285.0
PARCEL 3QN0019
WILLIAM F. ENDRES, et al.
 TOTAL HOLDING = 69.910 ACRES, +/-
 TOTAL R.O.W. REQUIRED = 0.864 ACRES, +/-
 (37195 SQ FT, +/-)
 AREA IN EXISTING R.O.W. = 0.025 ACRES
 (1078 SQ FT)
 NET R.O.W. REQUIRED = 0.829 ACRES, +/-
 (36119 SQ FT, +/-)
 REMAINDER = 68.056 ACRES, +/-

13-2003LV-286.0
PARCEL 3QN0021
JEFFREY E. KAMRATH, et al
 TOTAL HOLDING = 37.500 ACRES, +/-
 TOTAL R.O.W. REQUIRED = 0.101 ACRES, +/-
 (4386 SQ FT, +/-)
 REMAINDER = 37.398 ACRES, +/-

S.W. COR., N.W. SEC. 9,
 T. 27 N., R. 7 E., 3RD P.M.
 1/4" I. PIN W/ CAP SET
 MONUMENT RECORD
 DOCUMENT NO. 561431

N.W. COR., N.W. SEC. 9,
 T. 27 N., R. 7 E., 3RD P.M.
 1/4" I. PIN FD
 MONUMENT RECORD
 DOCUMENT NO. 566369

I, MICHAEL E. RAPIER, HEREBY CERTIFY THAT I AM A LICENSED PROFESSIONAL LAND SURVEYOR OF THE STATE OF ILLINOIS, THAT THE SURVEY OF FAP 328 (IL ROUTE 47) WAS MADE BY MICHAEL E. RAPIER SURVEYING, INC. UNDER MY DIRECTION, AND THAT THIS PLAT IS A CORRECT REPRESENTATION OF SAID SURVEY TO THE BEST OF MY KNOWLEDGE AND BELIEF, THAT ALL MONUMENTS AND MARKS ARE OF THE CHARACTER AND OCCUPY THE POSITION SHOWN THEREON AND ARE SUFFICIENT TO ENABLE THE SURVEY TO BE RETRACED.

"THIS PROFESSIONAL SERVICE CONFORMS TO THE CURRENT ILLINOIS MINIMUM STANDARDS FOR A BOUNDARY SURVEY"
 8-29-2006
 ILLINOIS PROFESSIONAL LAND SURVEYOR NO. 2917
 EXPIRES: NOV. 30, 2008



N.E. 1/4, SEC. 9, T. 27 N., R. 7 E., 3RD P.M.

GRID DISTANCES AND BEARINGS SHOWN
 HEREON ARE REFERENCED TO THE
 ILLINOIS STATE PLANE COORDINATE
 SYSTEM, EAST ZONE (NAD 83).

GRID TO GROUND FACTOR = 1.000052656
 GROUND TO GRID FACTOR = 0.999947347

RIGHT OF WAY PLANS

ROUTE: F.A.P. 328 (IL ROUTE 47)
 SECTION: (123,123X)RS-3, (124)RS-5 & (123)BR-3
 PROJECT:
 COUNTY: LIVINGSTON
 JOB NO.: R-93-003-01
 STA. 969+95.31 TO STA. 996+76.37
 SCALE 1" = 100'